

Access

Access M&E Services Sdn Bhd
(889580-T)

COMPANY PROFILE

Mechanical Contractor based in Johor

Since 2010

Steel Piping

Non-metallic Piping

Equipment/structure installation

Maintenance & Repair Services

Contact Us

NO. 36, JALAN MUTIARA EMAS 5/11,
TAMAN MOUNT AUSTIN, 81100,
JOHOR BAHRU, JOHOR

TEL: 07-351 3720 FAX: 07-358 7090

junje@accessmne.com.my

accessmne.com



Access M&E Services Sdn Bhd

PRODUCT & SERVICES



METAL PIPING

- GTAW (TIG)
- GMAW (MIG)
- SMAW
- Hydrostatic and pneumatic testing



NON-METALLIC

- Electrofusion (HDPE)
- Butt fusion
- Socket fusion
- Extrusion /Hot air welding
- Solvent cement
- FRP lining
- FRP piping

MATERIAL:

ABS, HDPE, PE, PVC, UPVC, PP, PVDF, FRP



WATER TANK REPLACEMENT

STRUCTURE MODIFICATION

- Platform
- Spiral staircase

GRATING INSTALLATION

- HDG
- FRP
- EXPANDED METAL

FENCING, DRAIN COVER



MAINTENANCE & REPAIR SERVICES

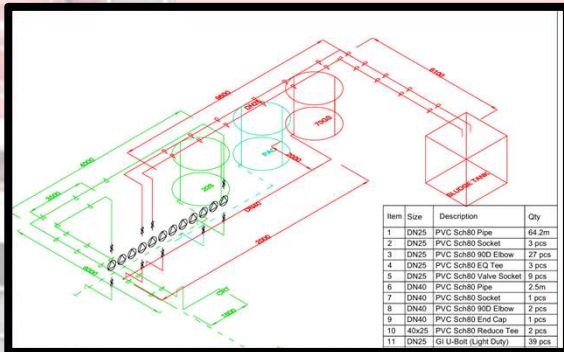
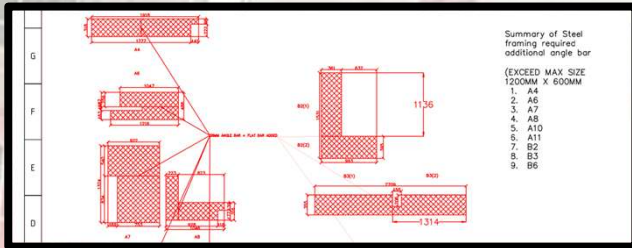
LIFTING WORK

VENT

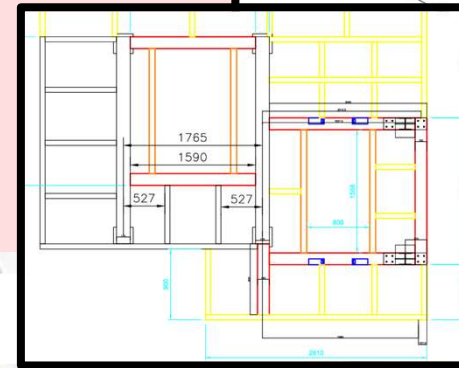
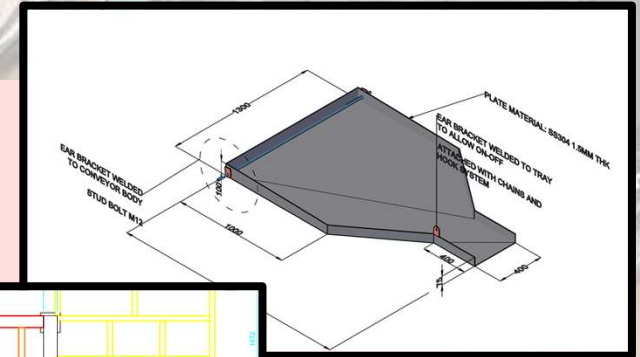
MINOR CIVIL WORK AND INSULATION

AND OTHER can be arranged through our reliable subcontractor network.

PRODUCT & SERVICES



**A TEAM THAT ALWAYS PREPARE
ENGINEER DRAWING
NOT JUST "DOING",
BUT UNDERSTANDING**



AS BUILT/ISO/ P&ID/ 3D



**A TEAM THAT UPDATE YOU
ON-TIME**
DO IT SAFE, DO IT RIGHT,
AND DO IT FAST.



MALAYSIAN SUPERVISOR AND FOREMAN

Certificates & Accreditation

Systematic & Documented

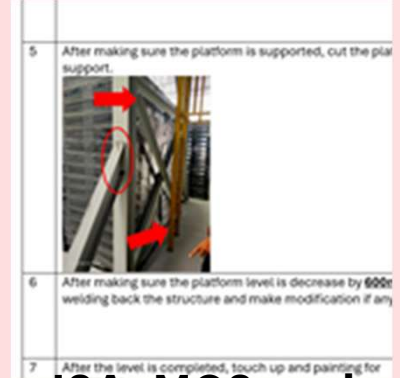


**CIDB - G4
B/CE/ME**



Access

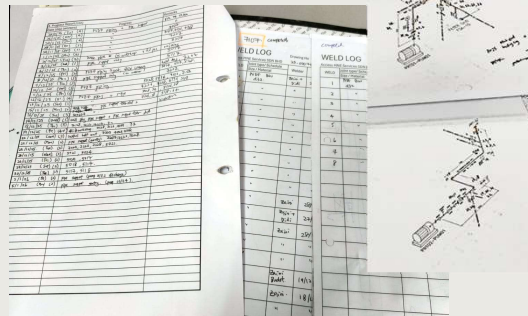
Work completion report



JSA, MOS and Permit to Work (PTW)



Welding Procedures Specification (WPS)

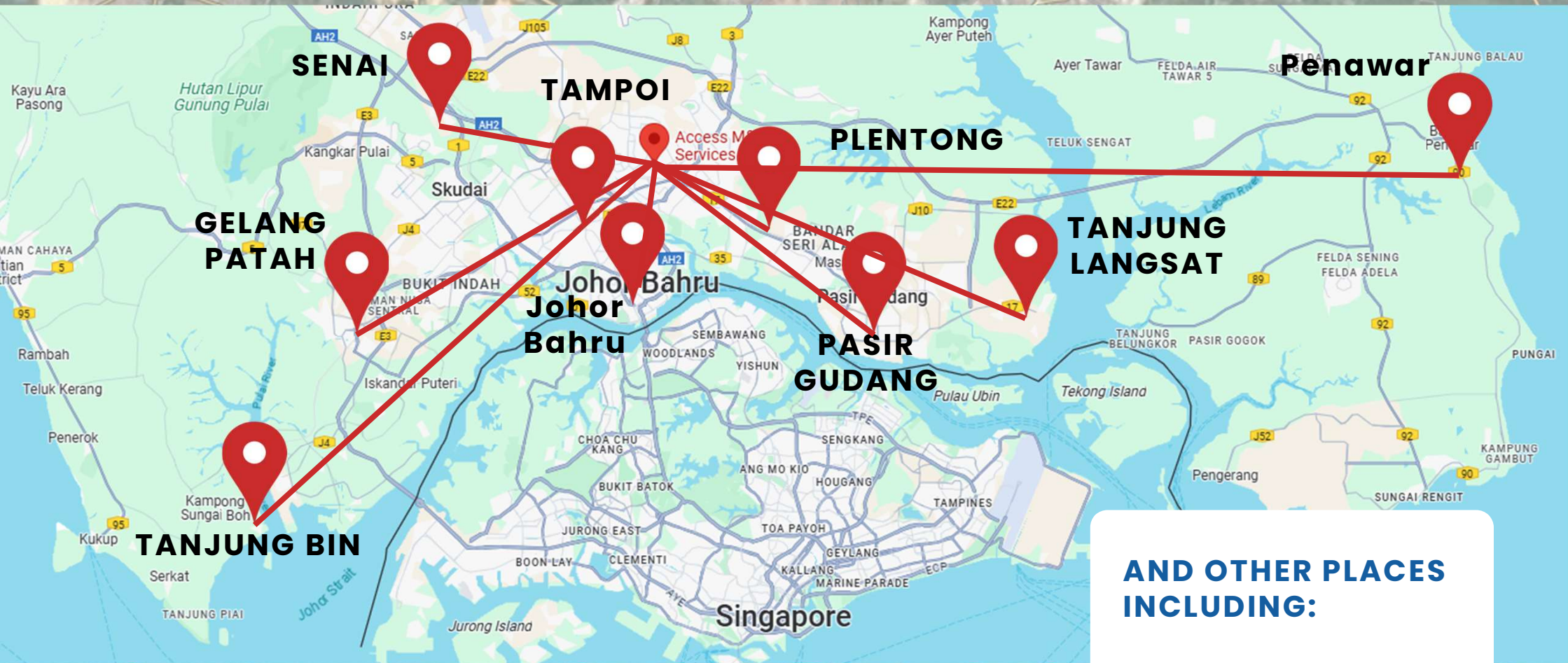


Weld map, weld log and progress



Working at Height & Confined Space

OUR CLIENT



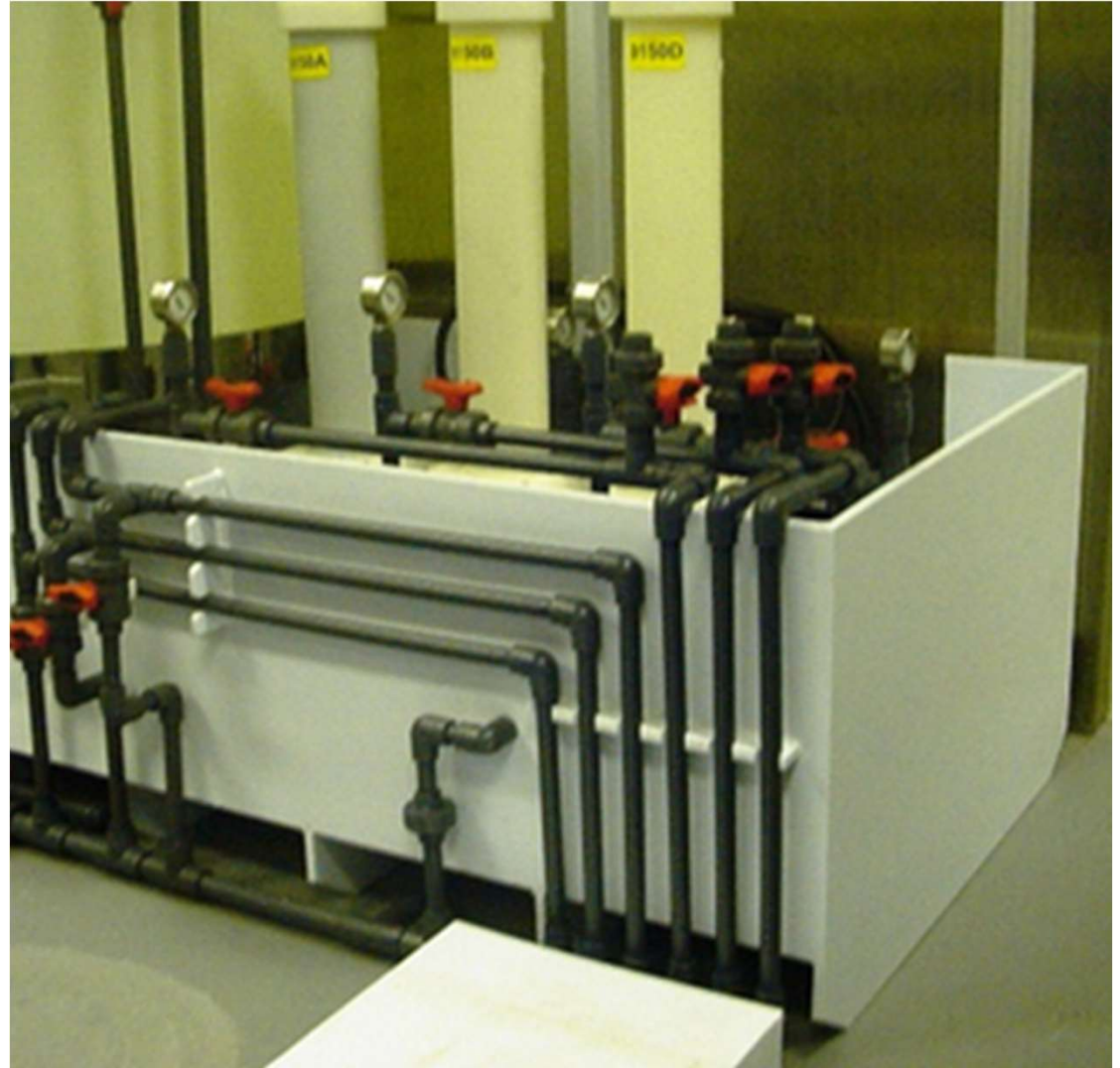
**AND OTHER PLACES
INCLUDING:**

**SEDENAK, JOHOR
KUANTAN, PAHANG
,ETC.**

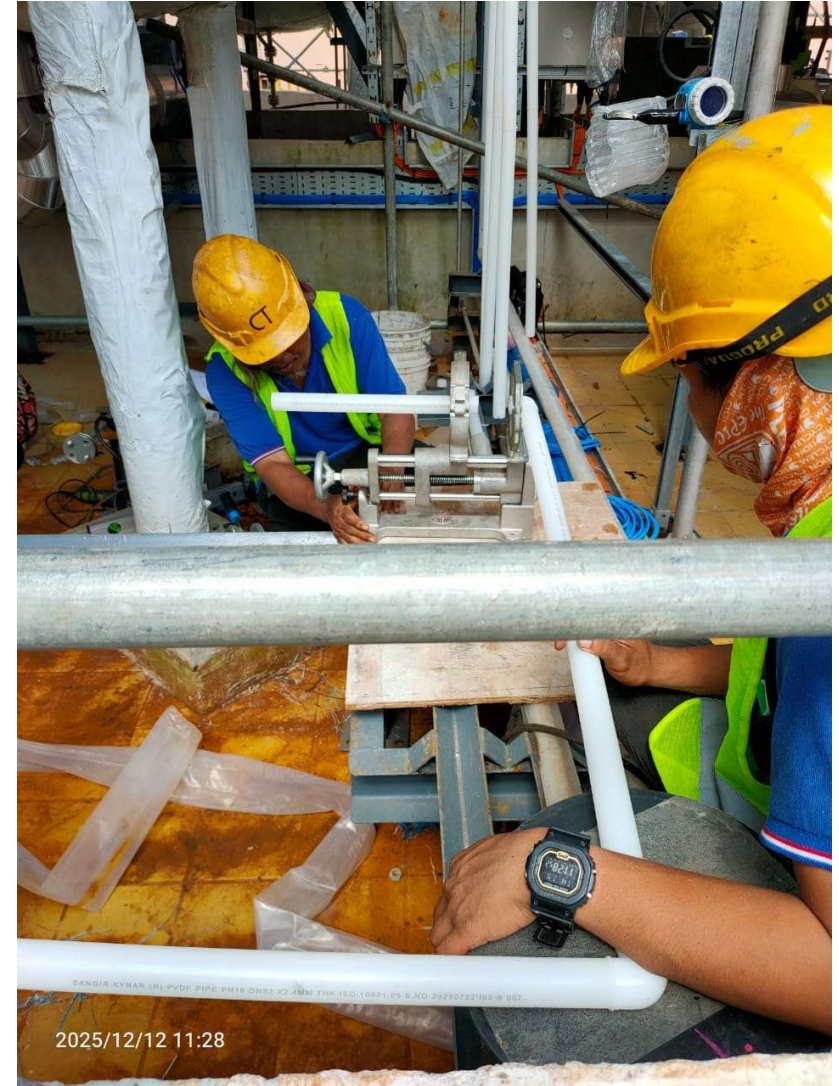
PP piping



Plastic piping



Plastic piping



Steel piping

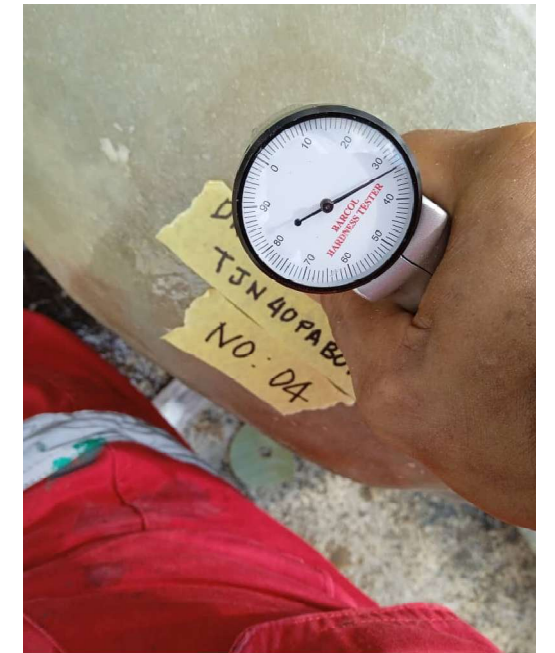


Sanitary piping

FRP Lining



FRP Piping



Access

Access M&E Services Sdn Bhd

THANK YOU FOR YOUR ATTENTION

Contact Us



NO. 36, JALAN MUTIARA EMAS 5/11,
TAMAN MOUNT AUSTIN, 81100, JOHOR BAHRU, JOHOR
TEL: 07-351 3720 FAX: 07-358 7090
junje@accessmne.com.my
accessmne.com

