

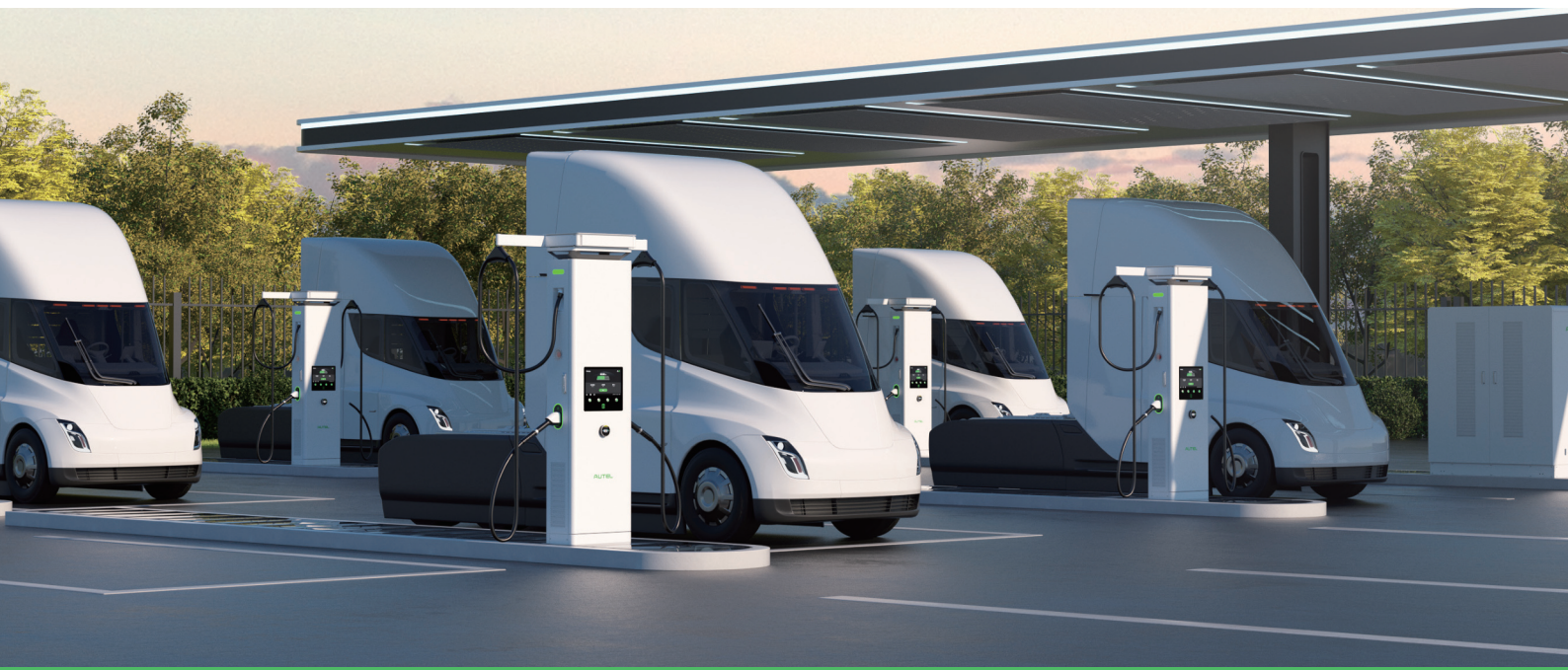
MaxiCharger DC HiPower

320 kW - 640 kW



MaxiCharger DC HiPower

640 kW Ultra Fast Charger



Ultra-Fast

Accelerate Revenue and User Engagement

- Max. 640 kW output power; Max. 650-amp output current; Max. 480 kW single cable output power.
- Liquid-cooling and low-temp fast charging tech provides up to 400 km of range in 10 min.



Intelligent

Optimize Power Efficiency

- Energy Cube (Matrix switching algorithm patented by Autel) and an AI-driven switching algorithm minimize expansion costs and optimize power capability utilization.
- Operational intelligence through load balancing minimizes power consumption while enhancing station performance.



Reliable

Drive High Uptime

- Unified hardware and software design minimizes failure rates, enhances maintainability, and guarantees optimal uptime.
- Vehicle-charger compatibility is up to 99.5%, and the success rate of a one-time charge is up to 99.5%.
- Streamlined maintenance with redundant backup modular design enables single-module replacement in just 3 minutes.



Scalable

Meet Growing Demand

- Starts at 320 kW, expandable up to 640 kW with added power modules.
- Adapt the dispenser count based on demand, enabling simultaneous charging for up to 8 vehicles.
- Compatible with solar power, energy storage, and energy management systems(EMS).

Technical Specification (Dispenser)

DC Output Connection

Liquid Cooling Dispenser

Boost Dispenser

Charging mode
Output1 power
Output1 voltage
Output1 current
Output2 power
Output2 voltage
Output2 current
Number of outputs

Mode 4: CCS2
480kW
150-950V
CCS2 500A (Max. 650A)
480kW
150-950V
CCS2 500A (Max. 650A)
2*CCS2

Mode 4: CCS2
240kW
150-950V
CCS2 300A (Max. 400A), 200A (Optional)
240kW
150-950V
CCS2 300A (Max. 400A), 200A (Optional)
2*CCS2, or 1*CCS2+1*CHAdEMO

General Characteristics

Liquid Cooling Dispenser

Boost Dispenser

Enclosure rating
Operating altitude
Operating temperature range
Storage temperature range
Mounting
Dimensions (H×W×D)
Screen type
Cable length

IP54
3000m
-35°C ~ +55°C
-40°C ~ +70°C
Floor Standing
2075×580×320 mm
15.6 inch LCD Touch Screen (1920*1080)
5m

IP54
3000m
-35°C ~ +55°C
-40°C ~ +70°C
Floor Standing
2075×580×320 mm
15.6 inch LCD Touch Screen (1920*1080)
5m

User Interface

Liquid Cooling Dispenser

Boost Dispenser

Status indication
User interface
Connectivity
Communication protocols
User authentication

LED/LCD/APP
Autel Charge APP; Autel Charge Cloud
Ethernet
OCPP 1.6J (OCPP 2.0.1 Optional)
APP, RFID card, QR code, Credit Card (Optional)

LED/LCD/APP
Autel Charge APP; Autel Charge Cloud
Ethernet
OCPP 1.6J (OCPP 2.0.1 Optional)
APP, RFID card, QR code, Credit Card (Optional)

Software Update

Liquid Cooling Dispenser

Boost Dispenser

Software update

OTA updates via web portal

OTA updates via web portal

Certification and Standards

Liquid Cooling Dispenser

Boost Dispenser

Safety standards
Certification
Design life
Warranty

IEC 61851-1; IEC 61851-23; IEC 61851-21-2;
ISO 15118
CE, EMC Class A
10 years
24 months, warranty extension possible

IEC 61851-1; IEC 61851-23; IEC 61851-21-2;
ISO 15118
CE, EMC Class A
10 years
24 months, warranty extension possible

Technical Specification (Power Cabinet)

AC Input

480kW (Air Cooling)

640kW (Air Cooling)

Earthing system	3P+N+PE	3P+N+PE
Input voltage	3-phase 400V AC $\pm 15\%$ (2 Routes)	3-phase 400V AC $\pm 15\%$ (2 Routes)
Input frequency	50Hz	50Hz
Power factor	≥ 0.99	≥ 0.99
Harmonic distortion (THDi)	$\leq 5\%$	$\leq 5\%$

General Characteristics

480kW (Air Cooling)

640kW (Air Cooling)

Number of outputs (Max.)	8	8
Minimum adjustable power	40kW	80kW
Connectivity	4G, Wi-Fi, Ethernet	4G, Wi-Fi, Ethernet
Peak efficiency	$\geq 96\%$	$\geq 96\%$
Enclosure rating	IP54	IP54
Operating altitude	3000m	3000m
Operating temperature range	$-35^{\circ}\text{C} \sim +55^{\circ}\text{C}$	$-35^{\circ}\text{C} \sim +55^{\circ}\text{C}$
Storage temperature range	$-40^{\circ}\text{C} \sim +70^{\circ}\text{C}$	$-40^{\circ}\text{C} \sim +70^{\circ}\text{C}$
Mounting	Floor Standing	Floor Standing
Dimensions (H×W×D)	2000×1700×900 mm	2000×1700×900 mm

Certification and Standards

480kW (Air Cooling)

640kW (Air Cooling)

Safety standards	IEC 61851-1; IEC 61851-23; IEC 61851-21-2; ISO 15118	IEC 61851-1; IEC 61851-23; IEC 61851-21-2; ISO 15118
Certification	CE, CB, UKCA, RCM	CE, CB, UKCA, RCM
Design life	10 years	10 years
Warranty	24 months, warranty extension possible	24 months, warranty extension possible

* All pictures shown are for illustration purpose only, actual product and specifications may vary due to product enhancement

AUTEL[®]

Autel Digital Power Co., Ltd.

☎ Phone: +8613632996171

✉ E-mail: henryhe@autel.com

🌐 Website: autelenergy.com

Autel Energy Asia & Australia

