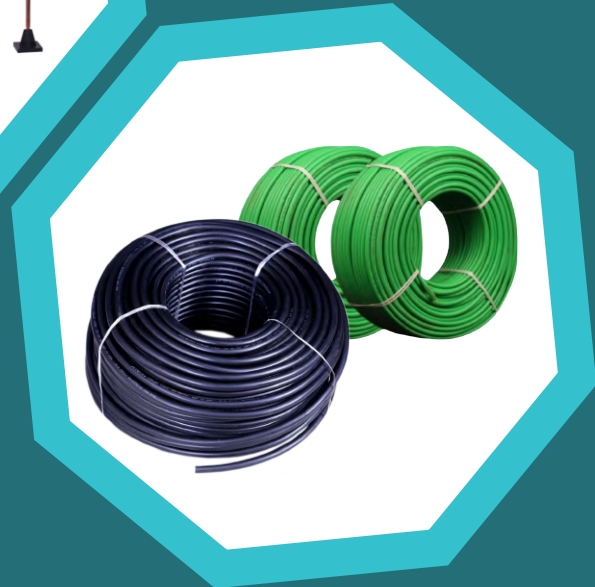
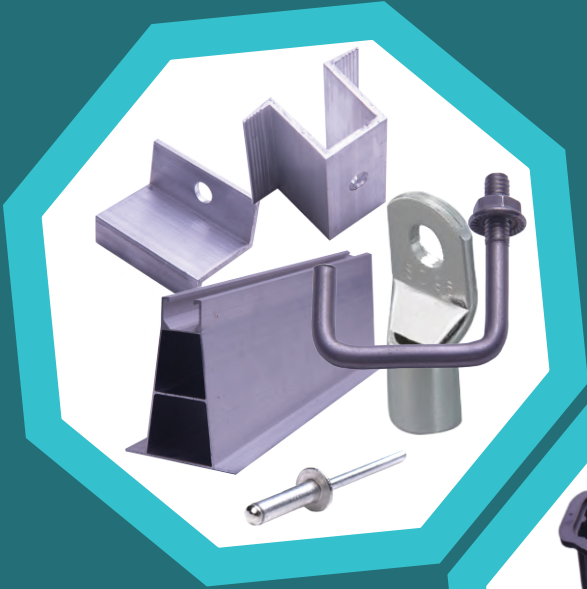




# ALDAM



Vyapari Tower | Parakandy  
Kannur-670 001



0497-3550460  
9544-030999



info@aldamearthings.com



www.aldamearthings.com

## EARTH PIT CHAMBER

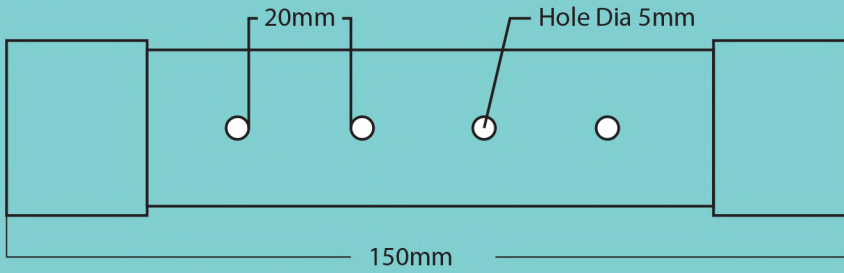


- Durable PVC/PP Construction
- Green / Red / Blue Lid Option
- High Load-Bearing Capacity
- UV Protected

|                   |               |
|-------------------|---------------|
| Top Dimensions    | 180mm x 180mm |
| Bottom Dimensions | 240mm x 240mm |
| Height            | 210mm         |



## Copper Bonded Bench



Bench

|           |        |
|-----------|--------|
| Length    | 150mm  |
| Width     | 24.5mm |
| Thickness | 3mm    |



## LIGHTNING ARRESTER SINGLE SPIKE



|                       |              |
|-----------------------|--------------|
| Base Material         | Carbon Steel |
| Base Coating Material | Nickel       |
| Coating Thickness     | 100 Micron   |
| Diameter              | 16mm         |
| Length                | 1 meter      |
| Base Material         | Nylon        |



## LIGHTNING ARRESTER MULTI SPIKE



|                       |              |
|-----------------------|--------------|
| Base Material         | Carbon Steel |
| Base Coating Material | Nickel       |
| Coating Thickness     | 100 Micron   |
| Diameter              | 16mm         |
| Length                | 1 meter      |
| Base Material         | Nylon        |



## COPPER BONDED ROD



|                          |              |
|--------------------------|--------------|
| Base Material            | Carbon Steel |
| Base Coating Material    | Nickel       |
| Copper Coating Thickness | 100 Micron   |
| Diameter                 | 14mm         |
| Length                   | 4 Feet       |

COPPER BONDED ROD



## 50sqmm Aluminium Multi Strands



LA CABLE

|           |               |
|-----------|---------------|
| Material  | Aluminium     |
| Size      | 50sqmm        |
| Strands   | 175           |
| Coil Size | 100/200 meter |



## 16sqmm Aluminium Multi Strands

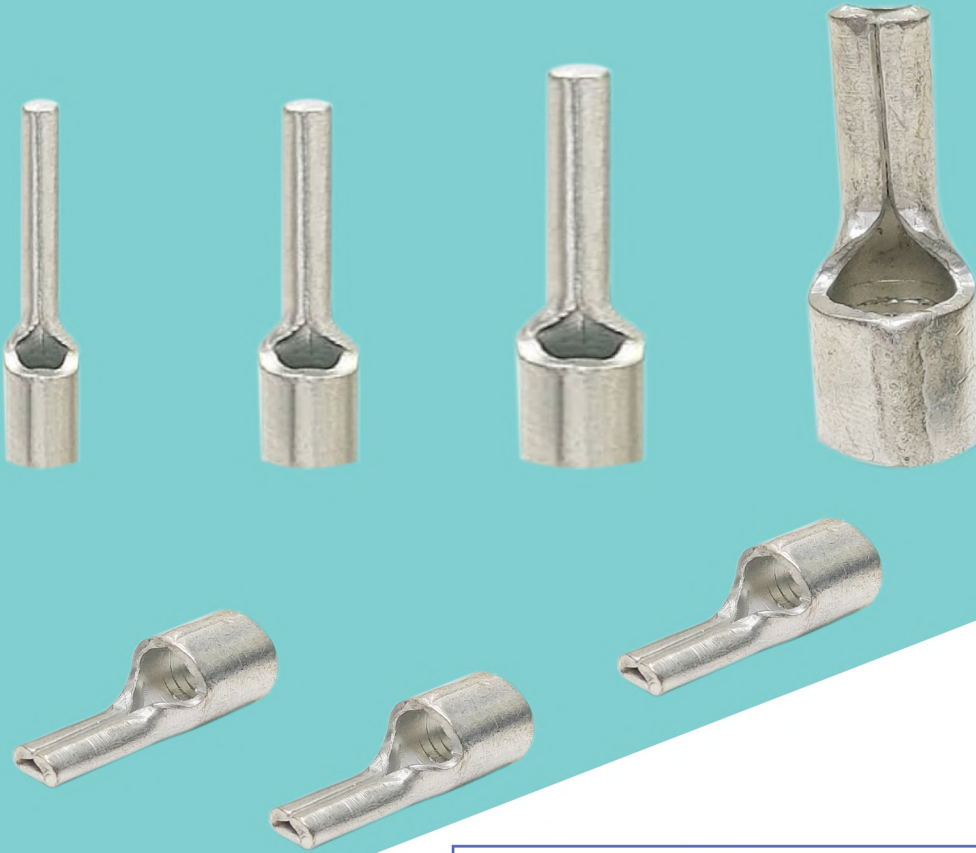


16sqmm CABLE

|           |           |
|-----------|-----------|
| Material  | Aluminium |
| Size      | 16sqmm    |
| Strands   | 45        |
| Coil Size | 100 meter |



## COPPER PIN TERMINAL

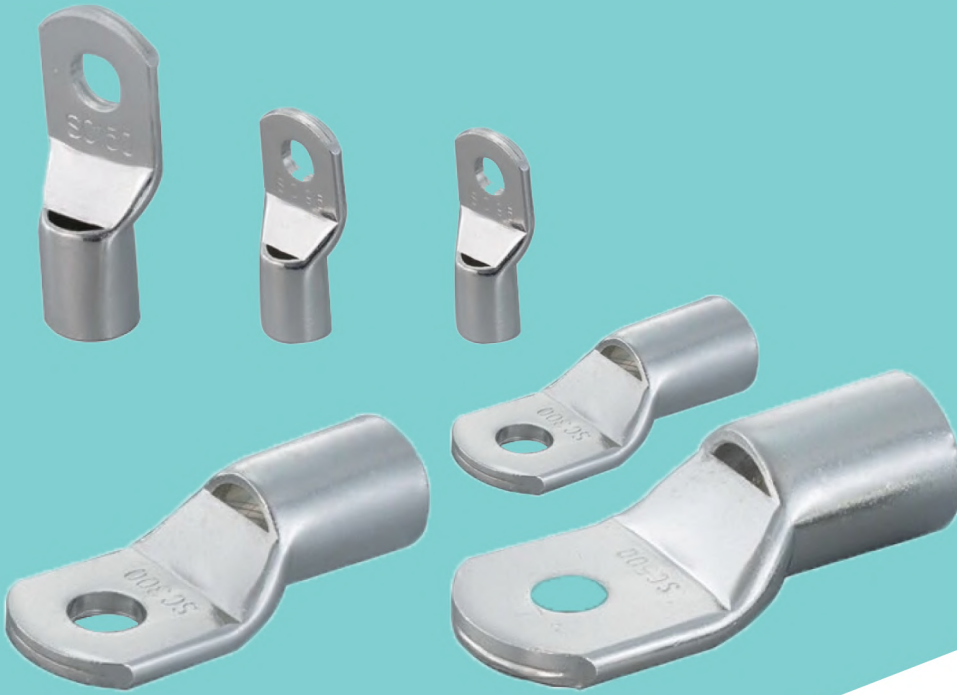


| Size   |
|--------|
| 4sqmm  |
| 6sqmm  |
| 10sqmm |
| 16sqmm |
| 25sqmm |
| 35sqmm |
| 50sqmm |

**HIGH QUALITY PIN TERMINAL**



## COPPER TUBULAR TERMINAL



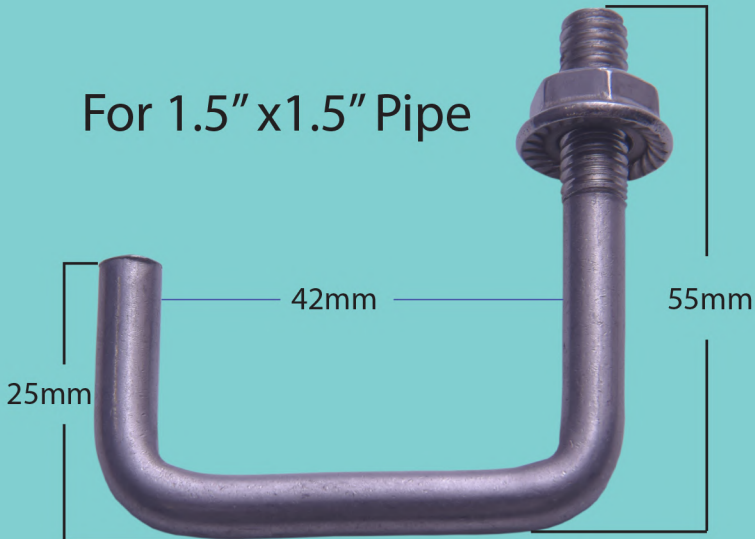
**HIGH QUALITY LUGS**

| Cable Size | Stud Hole |
|------------|-----------|
| 6sqmm      | 6.5mm     |
| 10sqmm     | 6.5mm     |
| 16sqmm     | 6.5mm     |
| 25sqmm     | 6.5mm     |
| 35sqmm     | 6.5mm     |
| 50sqmm     | 8.2mm     |



## SS304 J BOLT (M8)

We supply high-quality Stainless Steel 304 J-Bolts specially designed for solar



- SS 304 J BOLT
- FLANGE NUT 5/16

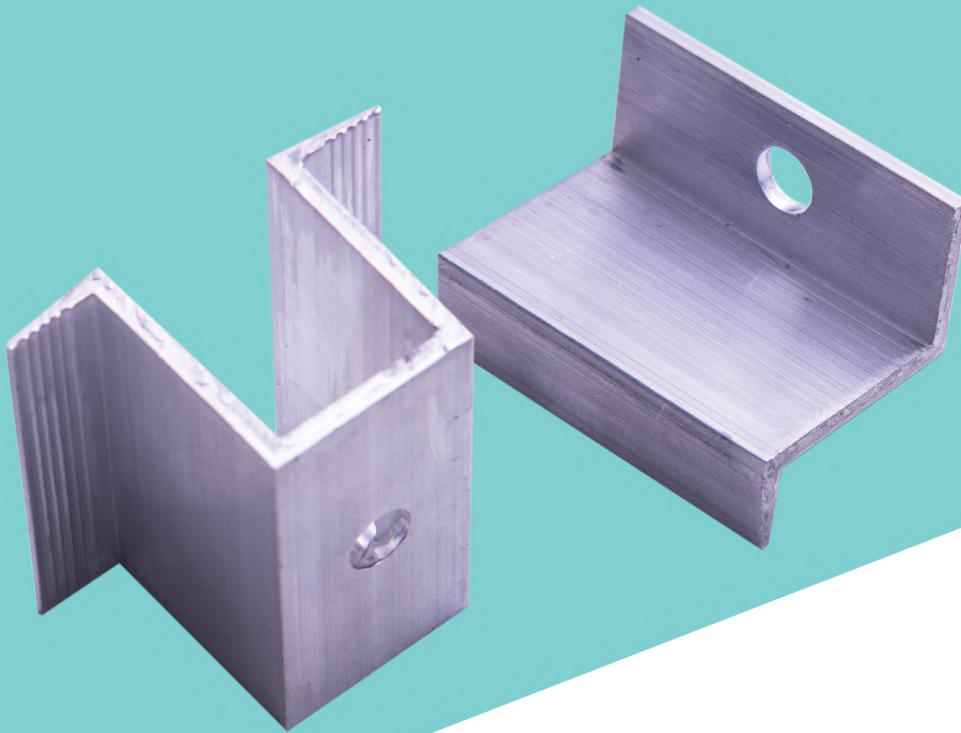


- SS 304 J BOLT
- FLANGE NUT 5/16

SS 304 J BOLT



## Aluminium Single Hole Mid & End Clamp



CLAMP

|           |             |
|-----------|-------------|
| Material  | Aluminium   |
| Grade     | 6063        |
| Size      | 30/35/40 mm |
| Width     | 50mm        |
| Thickness | 2.5mm       |





## CABLE TRAY



|          |                 |
|----------|-----------------|
| Type     | Sloted/Unsloted |
| Material | PVC             |
| Length   | 1000mm          |
| Size     | 45x45 mm        |



## HIGH QUALITY COLD PRESS FERRULE



FERRULE

|          |                       |
|----------|-----------------------|
| Type     | Single Hole Terminals |
| Material | Copper                |
| Size     | 4sqmm/6sqmm           |



## CABLE SLEEVE



CABLE SLEEVE

|      |                  |
|------|------------------|
| SIZE | 6, 7, 8, 9, 10mm |
|------|------------------|

