

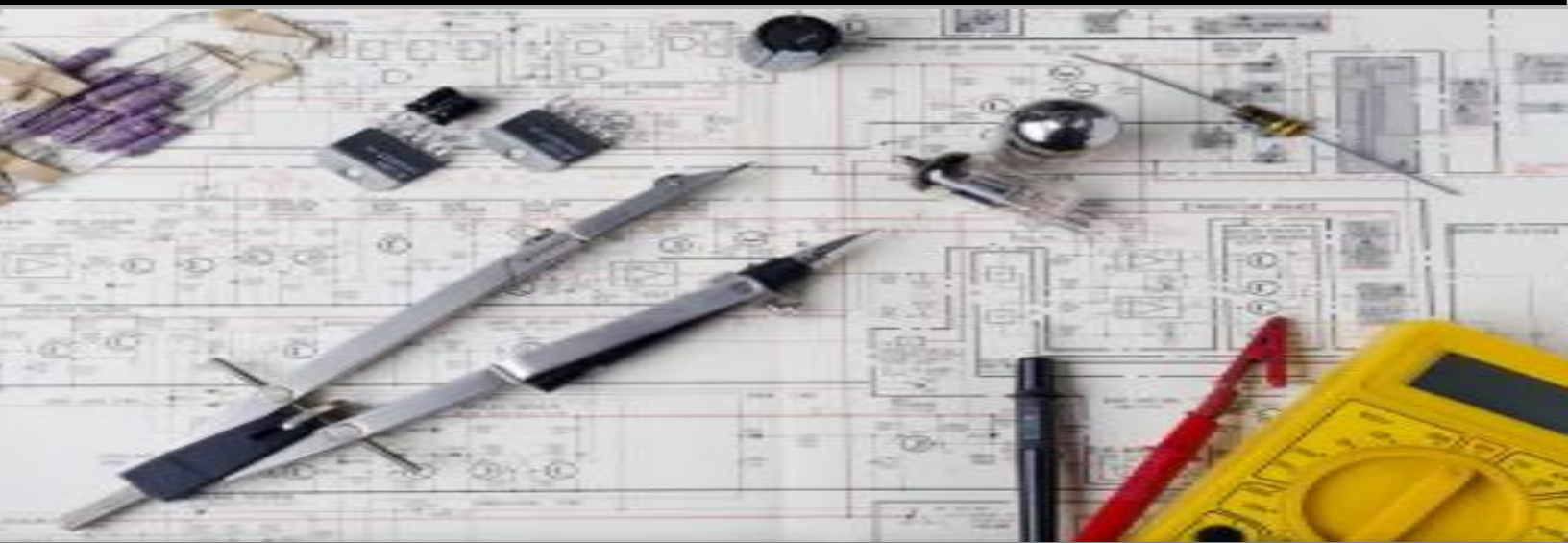


ALSAFFA

ENGINEERING

SPECIALIST S.S WORKS

COMPANY PROFILE



+92300-2686542



alsaffaengineering@gmail.com



Shop No. 62, 63 Sector 5-K Salma Blessing, North Karachi

Table of contents

SR.No	PARTICULARS	PAGE No.
1	LIST OF OUR CLIENTS	2 - 3
2	ABOUT US & VISION	4
3	MISSION	5
4	COMPANY MAIN ACTIVITIES	6
5	MECHANICAL WORKS	7-8-9-10
6	WHY CHOOSE AL SAFFA? – QUESTIONS & ANSWERS	11
7	PROJECT COMPLETED SUCCESSFULLY!	12
8	PROJECT SHOWCASE	13-14-15-16-17
9	PROJECT SHOWCASE	18-19-20-21
10	THANKYOU...	22

List of Our Clients

PAKISTAN



Karachi International
Container Terminal



PepsiCo Pakistan.



Unilever Pakistan



Coca-Cola Pakistan



Safeguard Pakistan



Sunridge Pakistan



Metro Food Industries



Colgate-Palmolive (Pakistan) Limited



SGS laboratories



ADAMJEE TEXTILE MILLS (PVT) LTD

Adamjee Enterprises



Quice Food Industries Limited



Ary channels



Bahria Town
(Private) Limited



Urban Twin Towers



Emaar Coral Towers



Defense skyline



River Valley Malir



Karachi Shahra_e_Faisal
Freeway Heights (Pvt) Ltd

List of Our Clients

UAE



Emirates National Oil
Company Group (ENOC)



Abu Dhabi Dirham Building Island



Pineapple Building Abu Dhabi



Dubai Investments Park (DIP)



Tabreed Dubai (Sub Contractor)



Metro Station Dubai

About Us



Al Saffa Engineering S.S Work Specialist, we take pride in delivering high-quality engineering solutions with a strong focus on **precision, reliability, and client satisfaction**. Backed by a team of skilled professionals and a deep commitment to excellence, we offer **customized engineering services** tailored to meet the unique demands of each client.

Our expertise spans a wide range of sectors where **quality, safety, and performance** are paramount. From small-scale services to large, complex projects, we approach every task with innovation, integrity, and a drive for outstanding results.

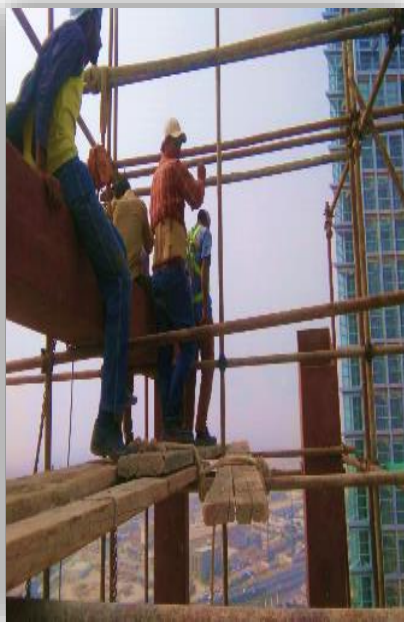
With every project, we uphold the highest standards—ensuring that our work not only meets but exceeds expectations.

Vision

Our Vision is to become a trusted leader in the engineering industry by delivering innovative, reliable, and high-quality solutions that set new standards in precision and performance. We aim to empower our clients, support sustainable development, and make a lasting impact on the communities we serve—driven by integrity, expertise, and a relentless pursuit of excellence.

Mission

Our mission is to deliver tailored engineering solutions that combine technical excellence, innovation, and uncompromising quality. We are dedicated to exceeding client expectations through precision-driven work, a skilled and passionate team, and a firm commitment to safety, sustainability, and continuous improvement. Every project we undertake is a step toward building lasting partnerships and contributing to the progress of industries and communities alike.



COMPANY MAIN ACTIVITIES

Main activities of our Company are:-

✓ **ALL CONSTRUCTION WORKS**

We are a comprehensive engineering services provider specializing in all types of construction and mechanical works. Our key areas of expertise include:

- **Structural Construction.**
Execution of all types of construction projects, including residential, commercial, and industrial buildings, infrastructure development, concrete and steel structures, and finishing works.
- **Mechanical Engineering Works.**
Fabrication, installation, and maintenance of mechanical systems such as piping, HVAC systems, storage tanks, and heavy industrial equipment.
- **Steel Fabrication & Erection.**
Custom fabrication of structural steel components and precise on-site erection to meet project specifications with high accuracy and quality.
- **General Contracting & Turnkey Projects.**
Full-cycle project delivery—covering design, planning, execution, and handover—ensuring a seamless and efficient experience for our clients.
- **Maintenance & Renovation.**
Mechanical and engineering maintenance services, including facility upgrades, repairs, overhauls, and ongoing technical support.
- **Industrial & Commercial Solutions.**
Engineering support for factories, warehouses, workshops, and commercial facilities, ensuring operational efficiency, reliability, and safety

Mechanical Works

We deliver comprehensive mechanical engineering solutions designed to meet the highest standards of performance, safety, and efficiency. Our services cover every aspect of mechanical work—from fabrication and installation to testing and maintenance.

Our Mechanical Services Include:

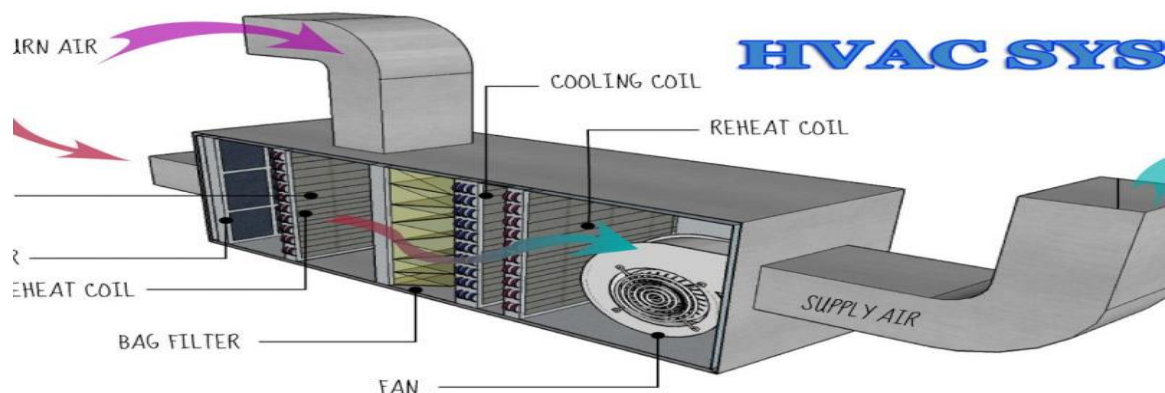
❖ Piping Systems

Fabrication and installation of industrial piping for water, gas, oil, and other process systems, using materials like carbon steel, stainless steel, and HDPE.



❖ HVAC Systems

Design, installation, and maintenance of heating, ventilation, and air conditioning systems for industrial, commercial, and residential facilities.



❖ **Tanks & Vessels**

Fabrication and erection of storage tanks, pressure vessels, and silos, built to client specifications and international standards.



❖ **Equipment Installation**

Precision installation and alignment of heavy mechanical equipment, including pumps, compressors, boilers, and generators.



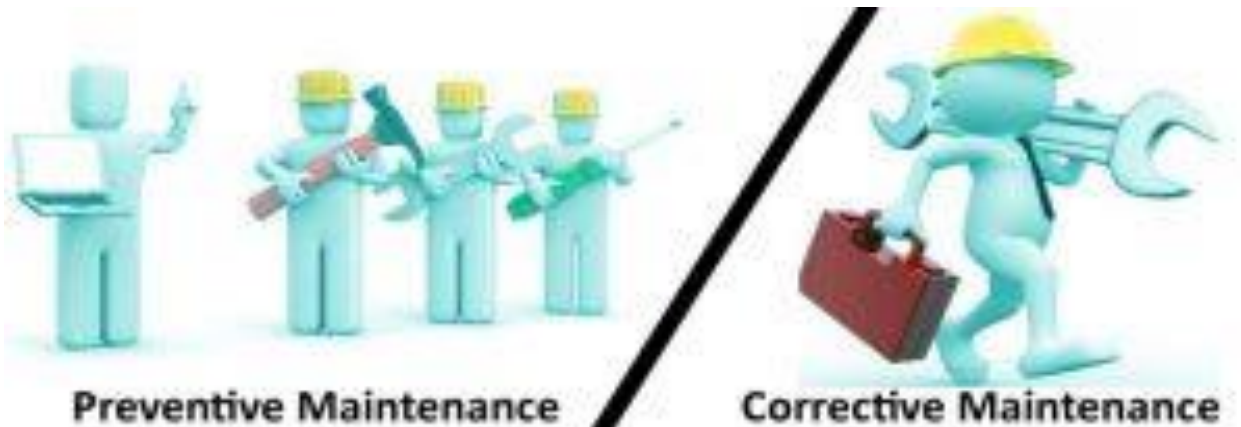
❖ **Welding & Fabrication**

Certified welding services and custom metal fabrication for structural, mechanical, and industrial components.



❖ **Preventive & Corrective Maintenance**

Ongoing inspection, troubleshooting, and repair of mechanical systems to ensure safe and uninterrupted operation.



AL SAFFA – BEST IN ALL TYPES OF FABRICATION & INSTALLATION ENGINEERING SERVICES

We are committed to delivering high-quality engineering solutions with a focus on precision, safety, and reliability. With a team of skilled professionals and advanced equipment, we offer a full spectrum of fabrication and installation services tailored to meet your industrial needs.

Our Core Services Include:

1. Structural Steel Fabrication

- ❖ Design, cutting, bending, and assembly of steel structures
- ❖ Fabrication of beams, columns, frames, platforms, and handrails
- ❖ Welding and finishing to international quality standards

2. Mechanical Equipment Installation

- Installation of industrial machines, pumps, conveyors, and piping systems
- Alignment, testing, and commissioning of mechanical systems
- Preventive and corrective maintenance support

3. Custom Metal Works & Welding

- Stainless steel, carbon steel, and aluminum fabrication
- Precision welding (MIG, TIG, ARC) and custom-built components
- Sheet metal works, tanks, ducts, and enclosures

4. On-Site Engineering & Maintenance Services

- Mobile teams for fabrication and repair at your facility
- Plant shutdown support and emergency maintenance
- Fabrication and modification as per site requirements

WHY CHOOSE AL SAFFA? – QUESTIONS & ANSWERS

Q1: What makes AL SAFFA different from other engineering service providers?

A: AL SAFFA is backed by a team of highly experienced engineers and technicians who bring deep industry knowledge and practical expertise to every project.

Q2: Can AL SAFFA deliver projects on time and within budget?

A: Absolutely. We pride ourselves on timely project delivery and cost-effective solutions that don't compromise on quality.

Q3: Do your services meet international standards?

A: Yes. All of our fabrication and installation work strictly complies with international safety and quality standards.

Q4: What kind of support can clients expect after project completion?

A: We offer excellent customer service and long-term support, ensuring your systems continue to perform reliably long after installation.

✓ PROJECT COMPLETED SUCCESSFULLY!

We're proud to announce the successful completion of our recent project from fabrication to full installation, AL SAFFA Engineering delivered high-quality results — on time and to the highest standards.



THANK YOU TO OUR DEDICATED TEAM AND VALUED CLIENT FOR TRUSTING US!
We continue to stand by our commitment to excellence in every project.

PROJECT SHOWCASE



PROJECT SHOWCASE



PROJECT SHOWCASE



PROJECT SHOWCASE



PROJECT SHOWCASE



PROJECT SHOWCASE



PROJECT SHOWCASE



PROJECT SHOWCASE



PROJECT SHOWCASE



Thank You!

For more info, please contact us:



+92300-2686542



alsaffaengineering@gmail.com



Shop No. 62, 63 Sector 5-K Salma Blessing, North Karachi