

 *praho*<sup>®</sup>  
User Manual



# Congratulations!!!



## Thank you for choosing a Selligion Praho 2.

Selligion Praho 2 is a powerful computer especially designed to meet almost all the needs of a student. Selligion Praho 2 runs on Selligion Abacca OS, a simple, light weight and easy to use operating system, developed by Selligion Labs in India.

With guaranteed over the air updates till year 2028, Selligion Abacca is designed to deliver a robust compute performance with constant updates that promise to improve the user experience and functionalities with time.

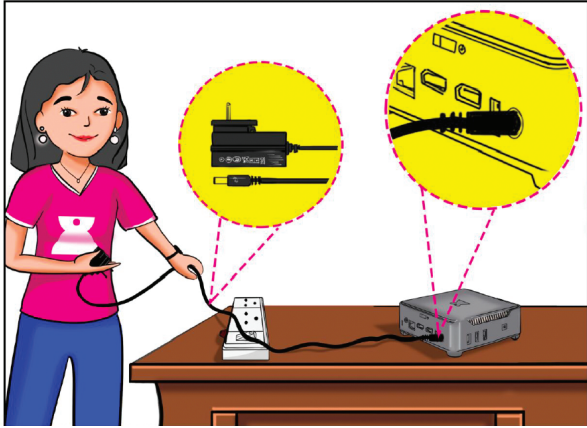
Selligion Praho 2 delivers an unmatched performance on almost all learning use cases, right from attending an online class to streaming content, learning programming and coding, browsing the internet, Libre Office, Canva, Figma, Microsoft Office 365, and many more apps that enable reading, streaming, homework, skill upgradations, designing and developing websites, applications and more.

Selligion Praho comes with built-in connectivity options which include Bluetooth, Wi-Fi, 2x HDMI Ports + 1x VGA port, 2x USB 3.0, 2x USB 2.0, 3.5 mm audio jack and much more. Every Selligion Praho device comes with 12 months of product replacement warranty along with a promise of unmatched product quality and customer service. We hope you enjoy Selligion Praho 2 for years to come.

# First installation in 6 simple steps.

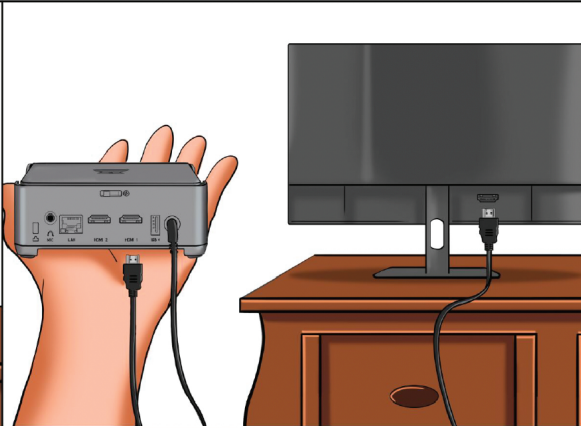
**1**

Connect the power adaptor to Selligion Praho 2.



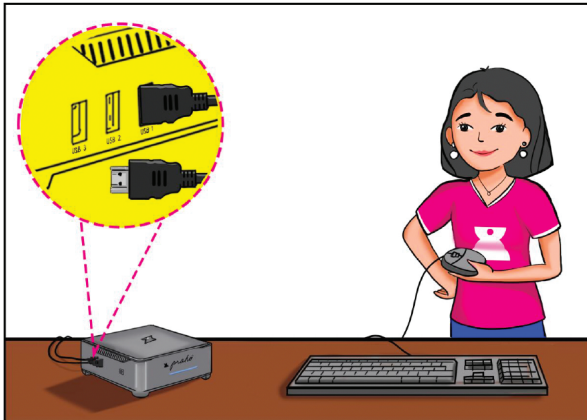
**2**

Connect the HDMI cable to Selligion Praho 2 and the monitor or display.



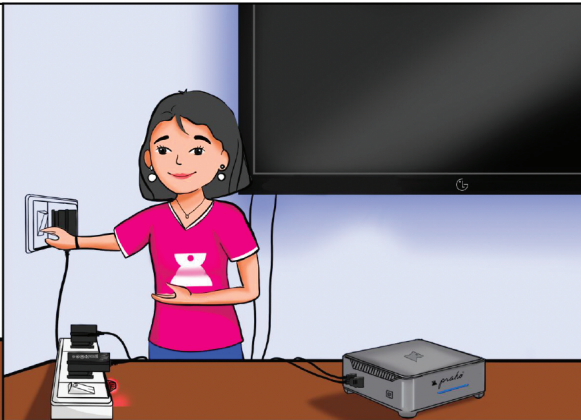
**3**

Connect the USB wired keyboard and mouse to Selligion Praho 2.



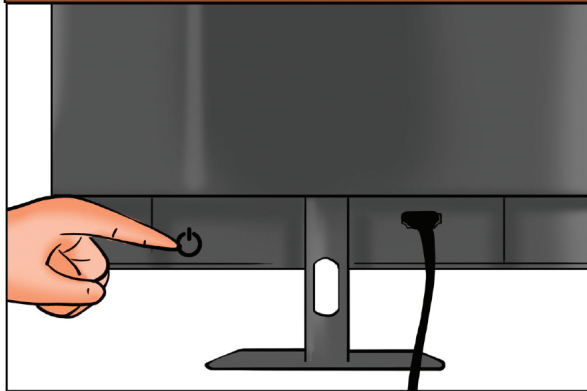
**4**

Connect your monitor/display to power.



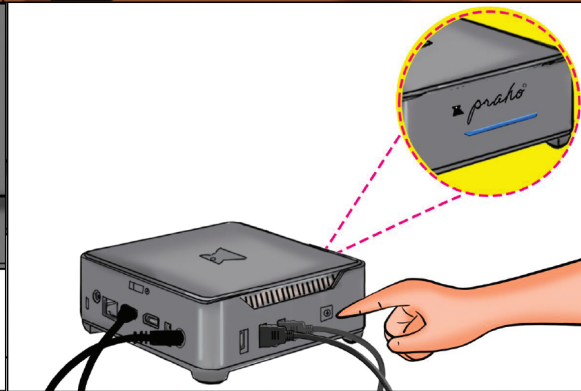
**5**

Switch on your monitor or display.



**6**

Switch on your Selligion Praho 2. Observe the status light turning blue.



# Guide to a **quick** system set up.

Switching on your Selligion Praho 2 for the first time? - Here below are the steps to follow after your Selligion Praho 2 turns on:

**Step 1:** Select Language/Country (Region) - We recommend the use of the default options here.

**Step 2:** Select the input method and click - "Continue".

**Step 3:** Connect your device to the internet - you can either connect an ethernet cable to your Selligion Praho 2 or choose the Wi-Fi option and provide the credentials before clicking on - "Continue".

**Step 4:** Select your location and click on - "Continue".

**Step 5:** Enter your name and the name you'd like to give to your computer. Pick a user name and password and click on - "Continue".

**Step 6:** While your Selligion Praho is configuring the first time set-up - please make a note of your username and password.

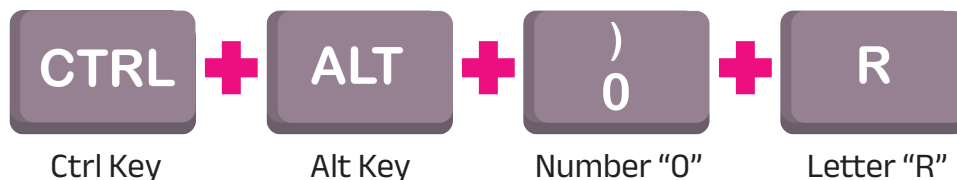
**Attention:** In case of loss of your username and password, you will have to perform a Factory Reset for your Selligion Praho, which will erase all your personal data stored on your Selligion Praho 2.

## Factory **reset** for Selligion Praho 2.

**Attention:** Factory resetting your Selligion Praho 2 will lead to loss of personal data on your device.

To factory reset your Selligion Praho 2, restart your Selligion Praho 2, and execute the following steps at the login screen:

**Step 1:** Long press the following keys on the keyboard connected to your Selligion Praho 2:



**Step 2:** Select the OEM and wait for a few seconds.

**Step 3:** Follow the instructions on your screen to create a fresh new user login.

## A few **precautions**.

1. Please keep the login details of your Selligion Praho safe.
2. Please connect your Selligion Praho 2 only to original power adaptors.
3. Please do not try and open and repair your Selligion Praho 2 - it will render the warranty as void.
4. Please take extra precautions while installing Selligion Praho 2 to make sure that the device does not meet any physical harm during regular operations.
5. Keep your Selligion Praho 2 away from any direct sunlight, large magnets and avoid exposure of the device to moisture, water, food or any other fluid.
6. Please press the on/off switch on Selligion Praho 2 carefully. Do not press the button repeatedly.
7. Please turn off the power supply to your Selligion Praho 2 in case you plan to not use the device for a long period of time.
8. Please ensure that your Selligion Praho 2 has enough space around it to maintain efficient air ventilation - a hot computer is a slower computer.

In case you need any assistance, write to us on [help@selligion.com](mailto:help@selligion.com).