

# IB PYP

## Specified concepts (Key Concepts)

### Posters

*Think & Reflect through the lens of concepts*

[www.tannusconceptcorner.com](http://www.tannusconceptcorner.com)





# Form *What is it like?*

*We think it means....*

*Our Questions are.....*

*We noticed this in .....*

*We deepen our understanding when..*





# Function

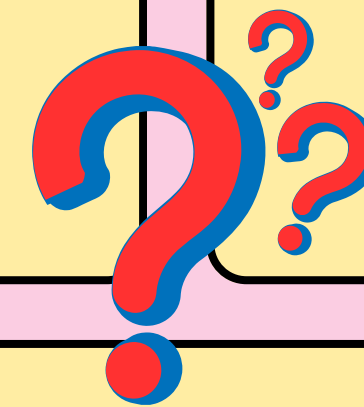
*How does it work?*

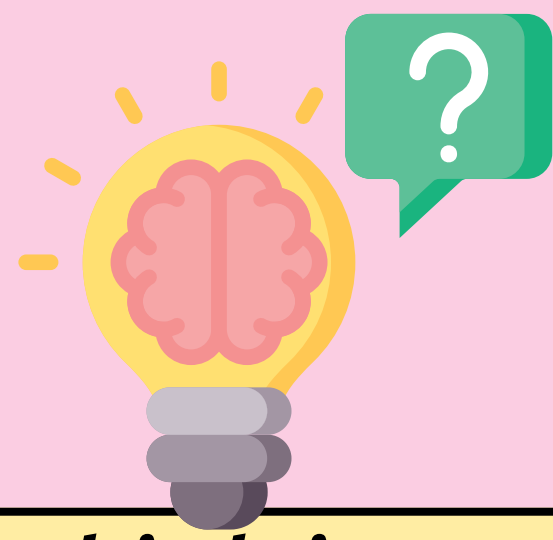
*We think it means....*

*Our Questions are.....*

*We noticed this in .....*

*We deepen our understanding when..*





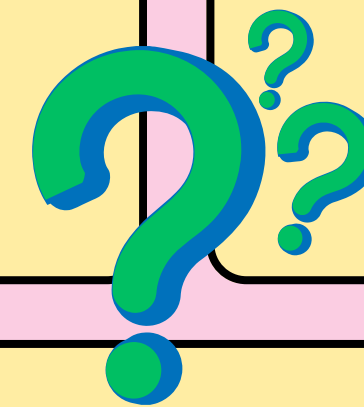
# Causation *Why is it like this?*

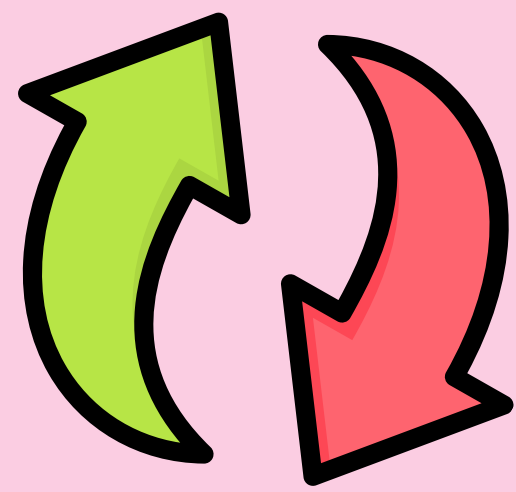
*We think it means....*

*Our Questions are.....*

*We noticed this in .....*

*We deepen our understanding when..*





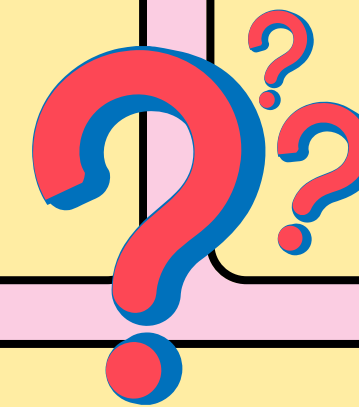
# Change

*How is it changing?*

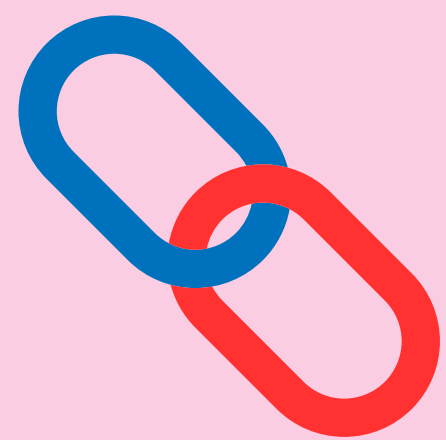
*We think it means....*

*Our Questions are.....*

*We noticed this in .....*



*We deepen our understanding when..*



# Connection

How is it connected  
to other things

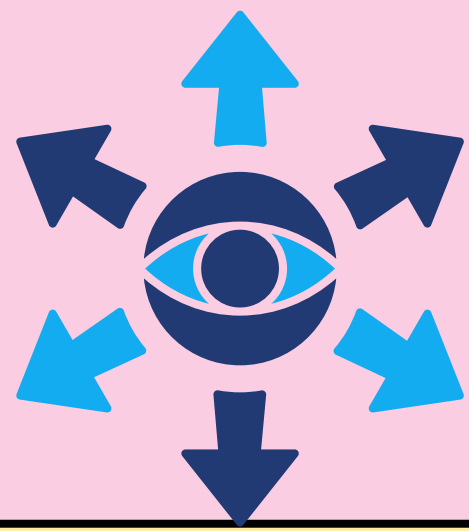
*We think it means....*

*Our Questions are.....*

*We noticed this in .....*



*We deepen our understanding when..*



# Perspective

What is our  
Point of View?

*We think it means....*

*Our Questions are.....*

*We noticed this in .....*

*We deepen our understanding when..*





# Responsibility

What is our  
Responsibility?

*We think it means....*

*Our Questions are.....*

*We noticed this in .....*

*We deepen our understanding when..*

