



IB PYP

Transdisciplinary Theme Descriptors

Designed to develop shared understanding and culture

www.tannusconceptcorner.com
tannusconceptcorner@gmail.com

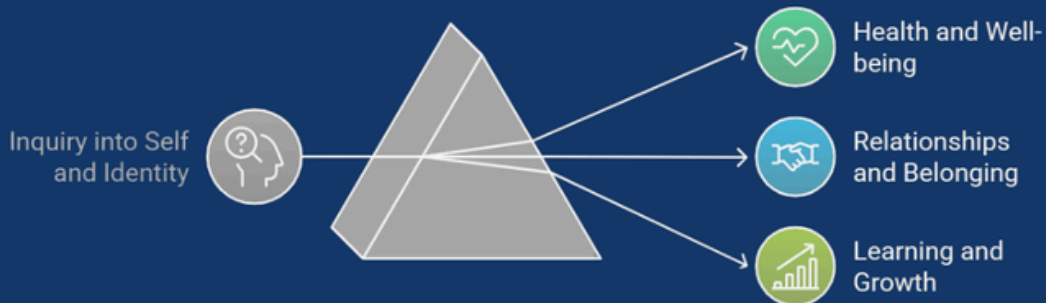


Who we Are



What IB says.....

Exploring Dimensions of Self and Identity



An inquiry into identity as individuals and as part of a collective through:

- physical, emotional and spiritual health and well-being;
- relationships and belonging;
- learning and growing

@ Tannu Jain

This means to us.....

We have noticed this theme in our lives / in the world when...

A Learner Profile we can show is...

@Tannu Jain

Where we are in place & Time



An inquiry into histories and orientation in place, space and time through:

- periods, events and artifacts;
- communities, heritage, culture and environment;
- natural and human drivers of movement, adaptation and transformation

What IB says..... @Tannu Jain

We have noticed this theme in our lives / in the world when...

This means to us.....

A Learner Profile we can show is...

How we Express Ourselves



What IB says.....



An inquiry into the diversity of voice, perspectives, and expression through:

- inspiration, imagination, creativity;
- personal, social, and cultural notes and practices of communication;
- intentions, perceptions, interpretations, and responses

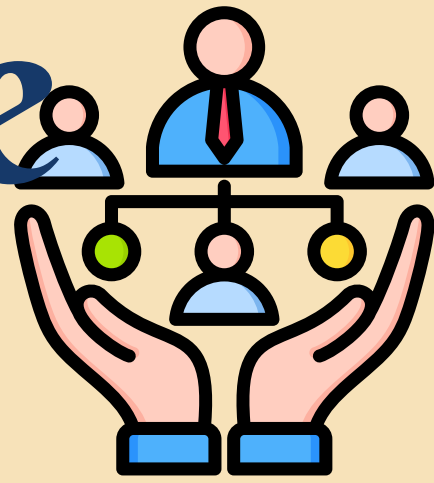
@Tannu Jain

This means to us.....

We have noticed this theme in our lives / in the world when...

A Learner Profile we can show is...

How we Organise Ourselves



Trade Practices
Analyzes intended and unintended consequences of trade practices.

Social Interactions
Examines how social systems influence decision-making and outcomes.

Ecological Systems
Investigates the impact of ecological systems on trade and livelihoods.

An inquiry into systems, structures, and networks through:

- interactions with and between social and ecological systems;
- approaches to livelihoods and trade practice - intended and unintended consequences;
- representation, collaboration, and decision-making

What IB says.....

This means to us.....

We have noticed this theme in our lives / in the world when...

A Learner Profile we can show is...

Sharing the Planet



What IB says..... Pathways to Interdependence **New Descriptor**

Rights and Responsibilities

Emphasizes the ethical obligations and entitlements of all beings.



Nature and Wisdom

Highlights the importance of understanding and coexisting with natural complexities.



Peaceful Futures

Focuses on creating harmonious and just societies.

An inquiry into the interdependence of human and natural worlds through:

- rights, responsibilities, and dignity of all;
- pathways to just, peaceful, and reimagined futures;
- nature, complexity, coexistence, and

We have noticed this theme in our lives / in the world when...

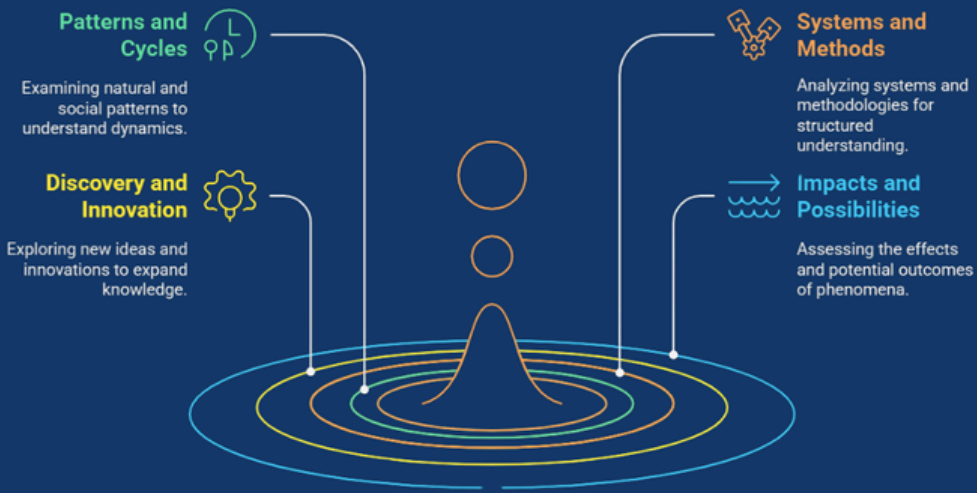
This means to us.....

A Learner Profile we can show is...

How the World Works



What IB says..... Exploring World Understandings New Descriptor



An inquiry into the understanding of the world and phenomena through:

- patterns, cycles, systems;
- diverse practices, methods, and tools;
- discovery, design, innovation, possibilities, and impacts

@Tannu Jain

This means to us.....

We have noticed this theme in our lives / in the world when...

A Learner Profile we can show is...