

CircularIT impact report

January 2026

SAMPLE Pop-up

Secure IT reuse.

Measurable impact.



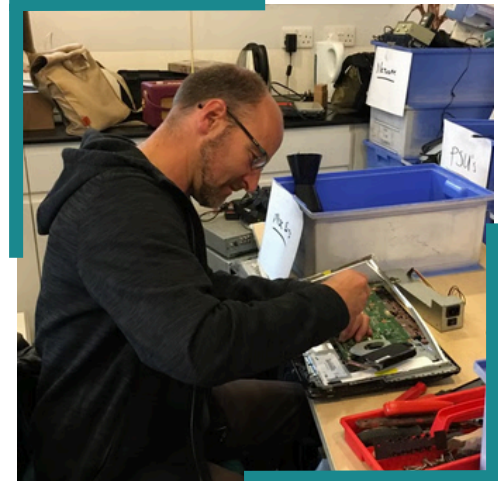
Your logo here

Thank you

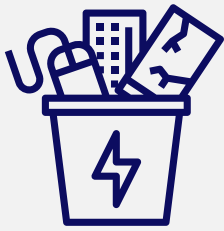
Thank you for hosting a TTB CircularIT pop-up tech collection. Your support has enabled secure processing of residents' unwanted devices, reduced e-waste, and generated measurable environmental and social impact.

All data-bearing devices we collected were processed using our certified data-erasure procedures before being assessed for reuse or responsible recycling. Where possible, devices were refurbished for a second life. At least 10% of reusable laptops were donated through our independent charity partner, Tech-Takeback Foundation, supporting individuals facing barriers to digital access.

This report summarises the outcomes of your collection event, including device flows, environmental benefits, donor engagement and social value.



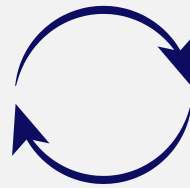
Your collection at a glance



250

Items collected

Weighing 197 kg



110

Items reused

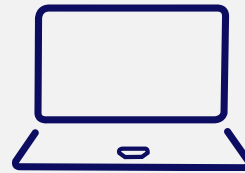
Weighing 72 kg



140

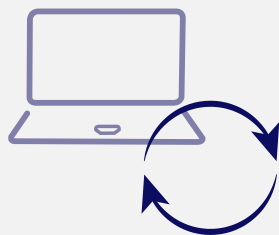
Items recycled

Weighing 125 kg



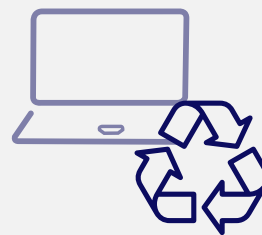
37

Laptops collected



13

Laptops reused



24

Laptops recycled



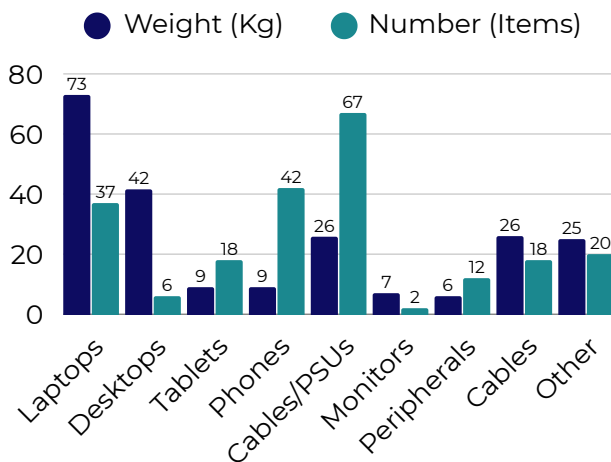
2

Laptops donated

Via Tech-Takeback Foundation

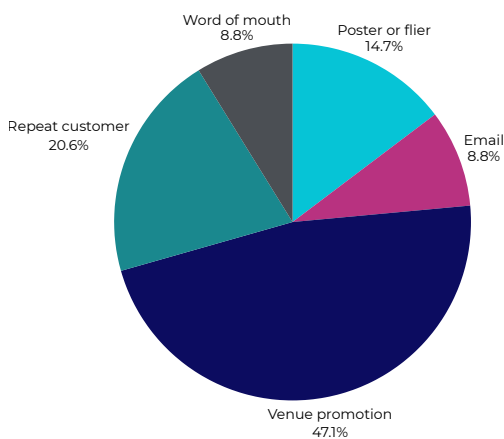
Event insights

What did we collect?



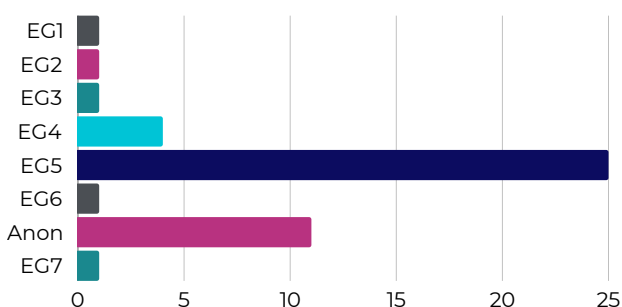
Your event generated a broad range of reusable devices, including laptops, desktops, tablets, monitors, phones and peripherals. This diversity increases opportunities for reuse and materials recovery.

How donors heard about the event



Participants found the event through repeat engagement, local promotion, posters/fliers, email campaigns and community word-of-mouth.

Where donors live (postcode breakdown)



Contributions came from a wide geographical area, including very local postcodes as well as some from further afield, demonstrating broad reach.

Environmental impact: reuse

Reusing devices collected from your event resulted in measurable resource savings:



1.4 t

CO²e (Scope 3)

Equivalent to the carbon absorbed by **64** trees in a year



1,600

M³eq Water

Equivalent to **19,200** baths (Yorkshire Water)



1.5 t

Chemicals

Equivalent to the weight of **20** adult humans!



20,500

MJ/year

fossil resources



7 t

mining materials

through the avoidance of mining rare earths



Environmental impact: recycling

Where reuse wasn't possible, devices were recycled responsibly, recovering key materials:



2.6 t

CO²e (scope 3)

Equivalent to the carbon absorbed by another **120** trees



24 kg

Ferrous materials

Enough iron to make **24** hammers



1.3 kg

Aluminium

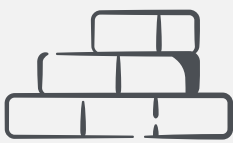
Enough to make **90** fizzy drinks cans



21 kg

Plastics

Equivalent to **1,186** water bottles



13 kg

Lead

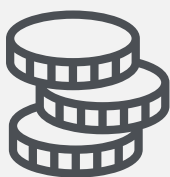
The equivalent weight of **6** building bricks



230 g

Steel

The steel content of approx. **6** 500ml food cans



4 kg

Copper

The equivalent weight of **457** £1 coins



Data Security and donor confidence

All data-bearing devices underwent data erasure to HMG Infosec 5 standards before reuse or recycling.

Donor surveys showed a clear shift from concern to confidence:

- Before erasure: individuals expressed high levels of concern about privacy, identity theft and data exposure.
- After certified erasure: the majority felt “not very” or “not at all” concerned.

Secure data erasure increases trust, reduces risk, prevents ‘hoarding’ and ensures compliance with best-practice disposal standards.

Without data erasure

With data erasure

Donor confidence before and after erasure



Social value

£117,600

Using HACT Social Value Insights, the social value of providing free data erasure at this event is. £117,600

Digital inclusion

Two of the reusable laptops collected through this event will be donated to our independent charity partner, Tech-Takeback Foundation.

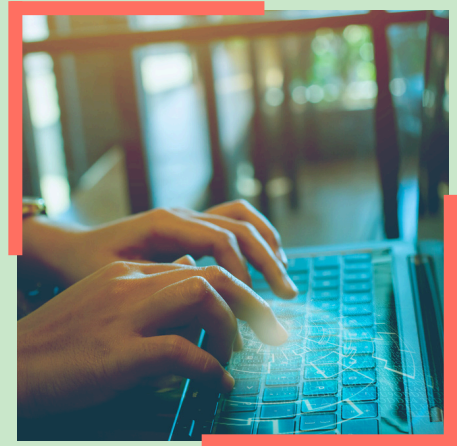
Tech-Takeback Foundation will donate the laptops to individuals facing digital exclusion in the City of London, along with Internet access and digital skills training, if required. These devices will support education, employment, communication and digital confidence.

Tech-Takeback Foundation

Example outcome

A care leaver supported by Tech-Takeback Foundation used her refurbished laptop to access online education, maintain contact with support networks and build independence. This contributed to improved confidence, more stable housing and sustained educational engagement.

www.techtakebackfoundation.org.uk



Social value

£77,800

Using frameworks such as HACT, TOMs and LOOP, the estimated social value of these two laptops is between **£11,600 and £77,800**; reflecting improvements in wellbeing, access to education and employment, and reduced isolation.

Methodology

Environmental impacts calculated using life-cycle assessment comparisons between reuse and new manufacturing, and between recycling and disposal streams.

Social value estimated using HACT Social Value Bank, TOMs and LOOP frameworks.

Data security outcomes derived from donor surveys at the event.

Contact

For questions about this report or to explore CircularIT services:

TTB CircularIT

hello@techtakeback.co.uk

techtakeback.co.uk

Digital inclusion support provided by:

Tech-Takeback Foundation

techtakebackfoundation.org.uk

