

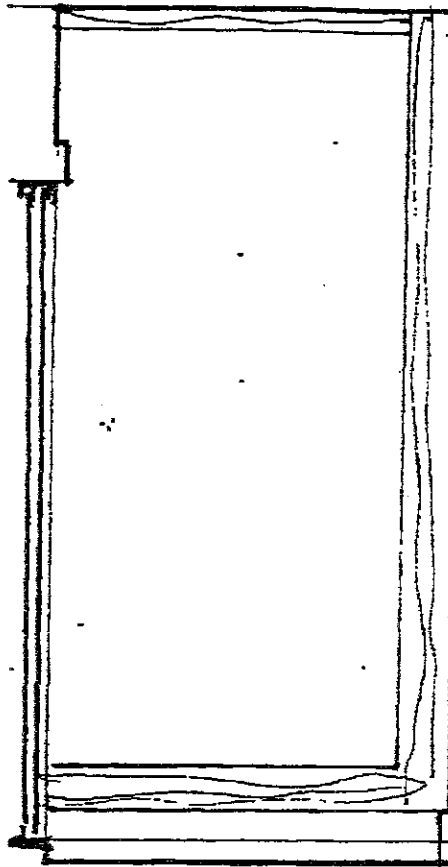
# Crosspointe

## BASIC ARCHITECTURAL GUIDELINES FOR MISCELLANEOUS CROSSPOINTE HOMEOWNERS REQUESTS - FEBRUARY 1996

### COURTYARD SUNSCREEN

1. Sunscreens shall be installed as shown on the attached drawing CP5 entitled SUNSCREEN GUIDELINE.
2. Installation shall be as such that easy removal will be facilitated.
3. Owner's request should state that when their unit is sold, the screen will be removed by the Owner.

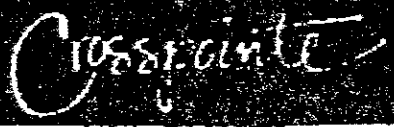
SECOND FLOOR  
LANAI



SUNSCREEN  
MAXIMUM WIDTH = 8'-0"  
MATERIAL:  
WOOD SLATS (MINI)  
VINYL OR LIGHT  
CANVAS

COLOR: WHITE  
OPERATION: ROLLED UP  
AND DOWN.

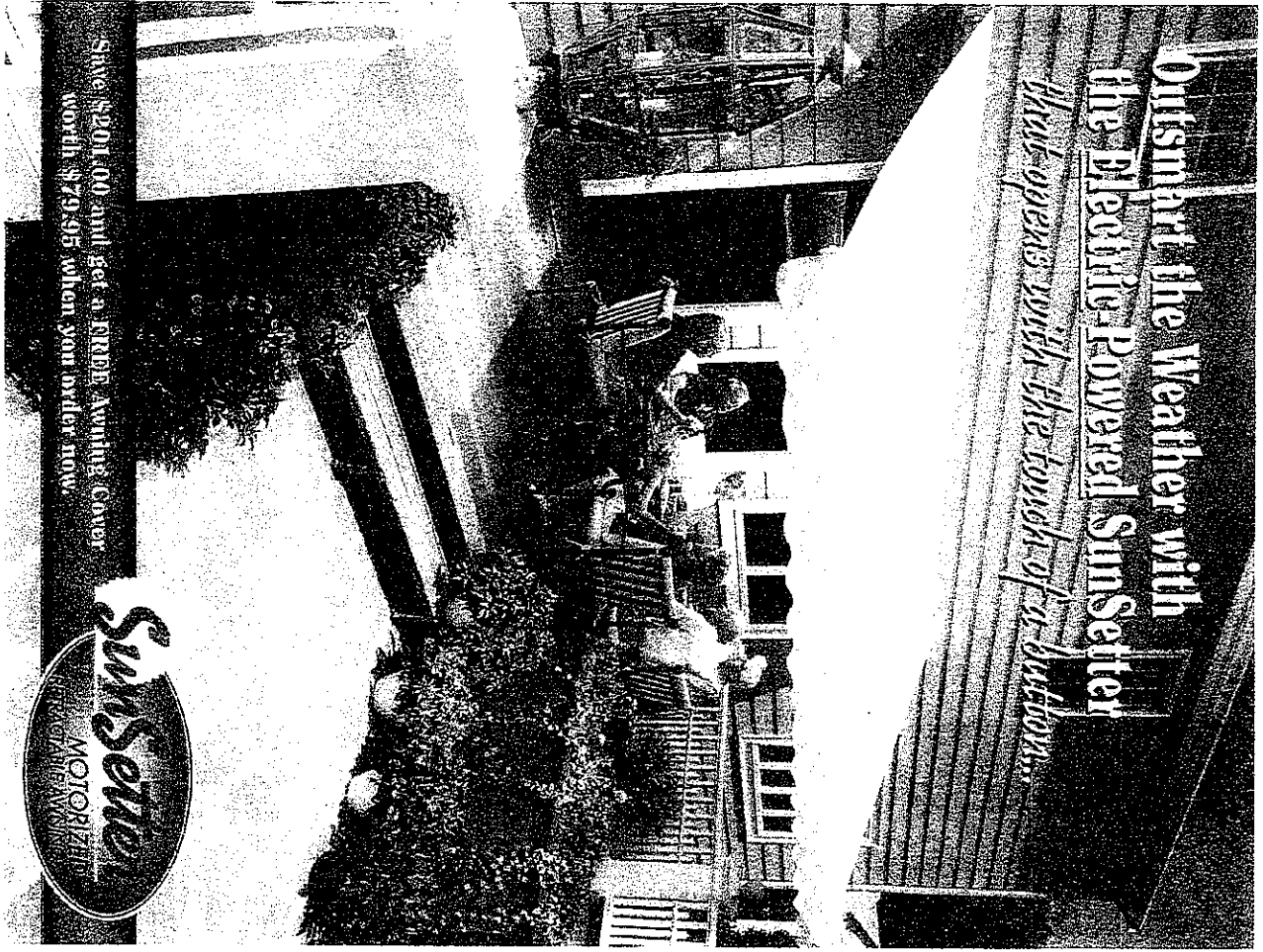
NOTE:  
APPLICABLE AT 2ND  
FLOOR ROOF EAVES ALSO



# SUNSCREEN GUIDELINE

Drawn by \_\_\_\_\_ BY \_\_\_\_\_  
Project No. \_\_\_\_\_  
Date \_\_\_\_\_  
Drawing No. \_\_\_\_\_

Outsmart the Weather with  
 the Electric-Powered SunSetter  
*that opens with the touch of a button.*



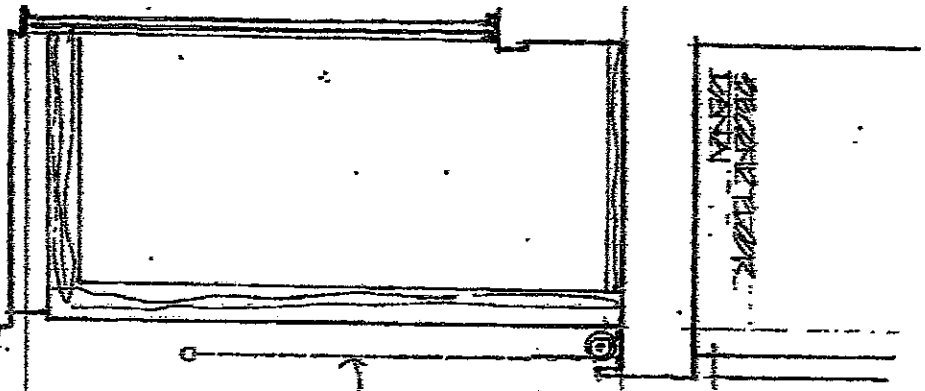
Save \$201.00 and get a FREE Weather Cover  
 worth \$79.95 when you order now.



TOLL FREE: 1-800-876-2340  
 WWW.SUNSETTER.COM

**APPROVED** FOR

*Crosspointe*



FOR USE WITH THE  
 CLASSIC AND DELUXE  
 MODELS OF A/S/MIND  
 WITH THE LIGHT  
 KNIFE  
 WITH THE  
 RETRACTABLE  
 AND TANNING

NOTE:  
 APPLICATIONS AT THE  
 DISCRETION OF THE  
 MANUFACTURER

SUNSCREEN GUIDELINE CP5