

# BUILDING MODIFICATIONS

- 1) The Board of Directors must first approve any additions or alterations to any units.
- 2) Residents must submit a written request for approval for any addition or alteration.
- 3) Residents may receive copies of specifications from the Resident Manager for the following;

**CONCRETE SLAB ON COURTYARDS,  
SCREEN DOORS, AIR CONDITIONING,  
COURTYARD STORAGE, COURTYARD  
SUNSCREEN, COURTYARD PET  
BARRIER, COURTYARD PLANTING,  
WINDOW TINTING, EXTERIOR  
PORCH LIGHT, LANAI GATE, SOLAR  
FAN, SOLAR LIGHT, SPLIT SYSTEM,  
FRONT DOOR, AND AWNING.**

- 4) All other miscellaneous request(s) will be forwarded to Board of Directors for their review and approval.

Crosspointe

# AIR CONDITIONING GUIDELINES

Please be informed of the basic architectural guidelines as set forth by the Crosspointe Association of Apartment Owners, February 1996:

## AIR CONDITIONING:

1. Units shall be the size and capacity that can be handled by the available electrical power in the unit.
2. Unit color:  
For building with gray field color - Light Gray  
For building with beige field color - Light Beige  
White color is acceptable in either case.
3. Supporting brackets and filler panel color shall be white to match building trims and moldings.
4. Drip line: all air-conditioning units located in the second floor shall be equipped with drip hose neatly tucked in the inside corner of the closest trim/wall intersection. Material shall be rubber, white in color or approved equal. (Please see attached drawing CP2 entitled AIR-CONDITIONING INSTALLATION GUIDELINE).

Section VII, paragraph 21 of the House Rules and Regulations specifically states:

AIR CONDITIONERS. All air conditioning units and installation of such units must have Board approval prior to installation. All air conditioning units require a drain hose and safety support brackets.

Crosspointe

# WINDOW AIR CONDITIONER INSTALLATION GUIDELINES

## 1. Install the Mounting Hardware

Large air conditioners rest on external brackets but on the newer models, air conditioners rest on sill-mounted supports. Open the window and install these fittings properly using the hardware and following the instructions that accompany the unit. If you install mounts improperly this could cause a drainage problem for the air conditioner, which could create water damage and termite attraction.

Attach the bracket to the window sill. You adjust the center screw, level the unit and provide condensation drainage.

## 2. Set the Unit in Place

Make sure the unit is installed securely. Support the A/C unit from underneath; or firmly fasten it from inside with angles. Metal brackets, mounting rails, wood brace may be used for a safe installation.

## 3. Fit the Extensions

Close the window onto the air conditioner and pull out the extensions on both sides of the unclosing up the openings between the unit and the sides of the window. When the extensions are snug against the window, fasten each to the sash.

## 4. Finish the Installation

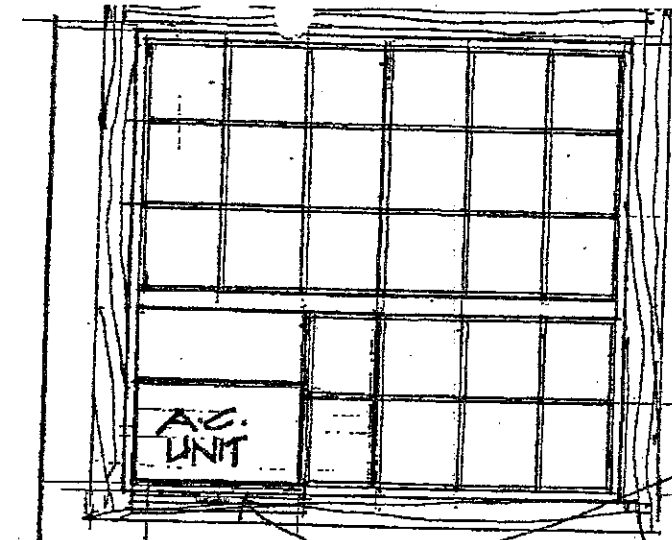
To seal the installation inside, use foam strip to fill the air gap where sashes overlap. Caulk the unit outside; check for manufacturer's instructions for operation and maintenance.

### NOTE: FOR WALL UNIT AC

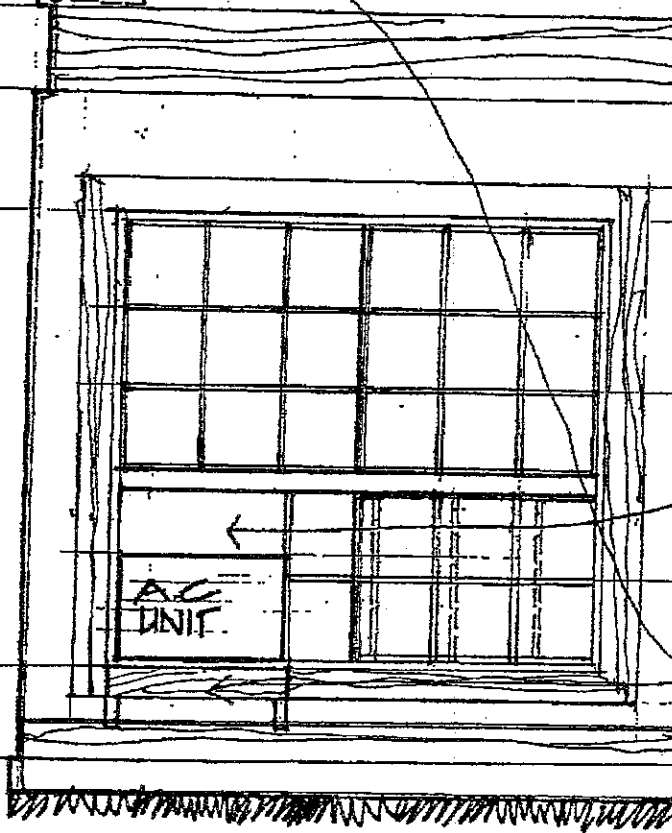
When replacing wall units be sure to ask your contractor to install flashings. Flashing seal a wall at its most vulnerable points. Flashings provide protection against water, air and moisture leaks. This helps prevent costly water damages.

Crosspointe

# Crosspointe



DRIP HOSE SHALL BE  
NEATLY TUCKED IN THE  
INSIDE CORNER OF  
NEAREST WALL INTER-  
SECTION.



FILLER PANEL  
SHALL BE WHITE,  
PLYWOOD OR  
EQUIVALENT MATERIAL

A.C. UNIT SUPPORTING  
BRACKETS SHALL BE  
PAINTED WHITE.  
MATERIAL CAN BE  
WOOD OR METAL.

## AIR-CONDITIONING INSTALLATION GUIDELINE

Drawn by BY  
Project No. 1001  
Date 1976  
Drawing No.

CP2

of Sheets

# AIR CONDITIONING REQUEST

I am the Owner/Property Manager of Unit # \_\_\_\_\_, and  
would like to request for Crosspointe Board approval to install  
an air conditioner. I have received copies of the Crosspointe  
Association Guidelines and agree to comply.

PRINT OWNER NAME \_\_\_\_\_

HOME # \_\_\_\_\_ WORK # \_\_\_\_\_

## INFORMATION ON A/C

MODEL # \_\_\_\_\_

MODEL NAME \_\_\_\_\_

# OF BTU'S \_\_\_\_\_ (A/C cannot exceed 110 voltage)

COLOR OF A/C \_\_\_\_\_

(Approved Colors: light gray, light beige, white)

PROPER ELECTRICAL POWER IN UNIT: YES  NO

SAFETY SUPPORT BRACKETS \_\_\_\_\_

(Must be painted white to match building trims & molds)

FILLER PANEL \_\_\_\_\_

(Must be painted white to match building trims & molds)

DRIP LINE ROUTED TO GROUND \_\_\_\_\_

LOCATION OF A/C UNIT \_\_\_\_\_

(A/C cannot block the water heater closet, or installed through any walls, or  
installed in a window that which will interfere with the walk space of the 2nd  
floor staircase)

OWNER/PROPERTY MANAGER SIGNATURE \_\_\_\_\_ DATE \_\_\_\_\_

APPROVAL BY:

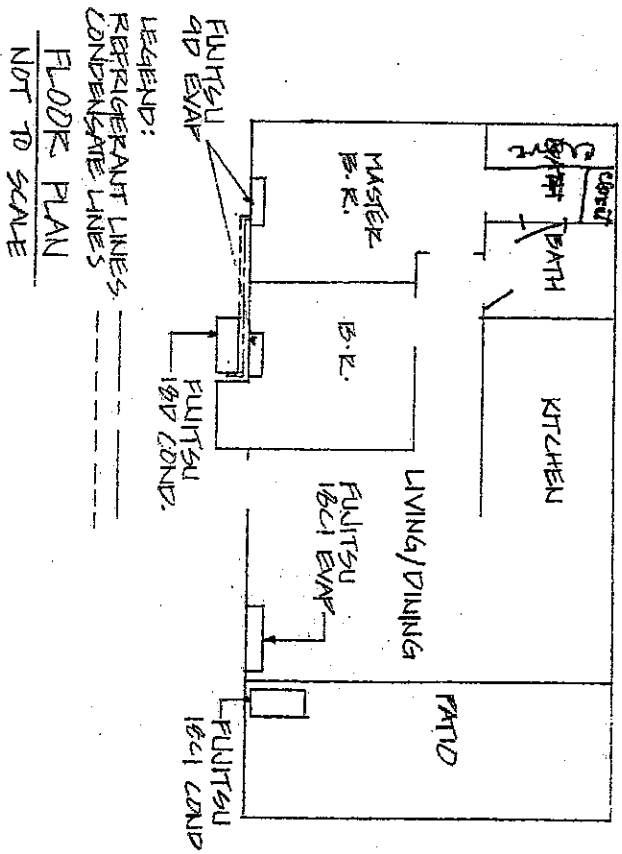
BOARD OF DIRECTORS SIGNATURE \_\_\_\_\_ DATE \_\_\_\_\_

Crosspointe

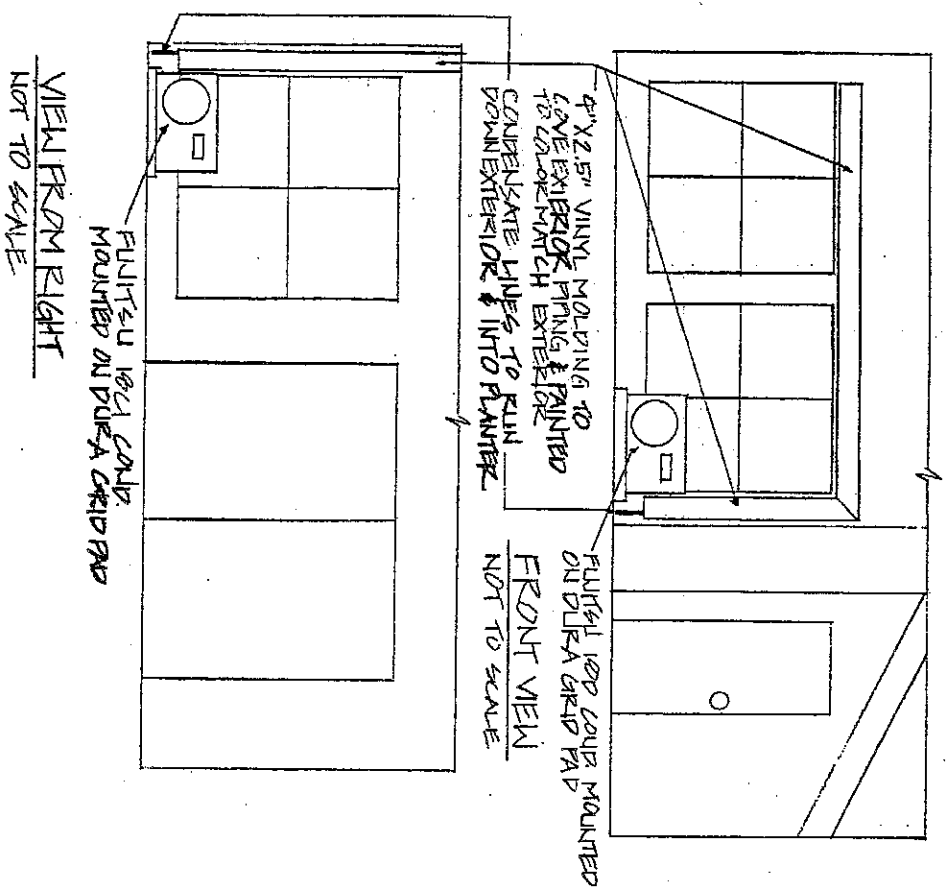
**APPROVED**

for

*Crosspointe*



DRAWING SUBMITTED BY:  
AIR EXHIBITS AIR CONDITIONING # CZ5A00



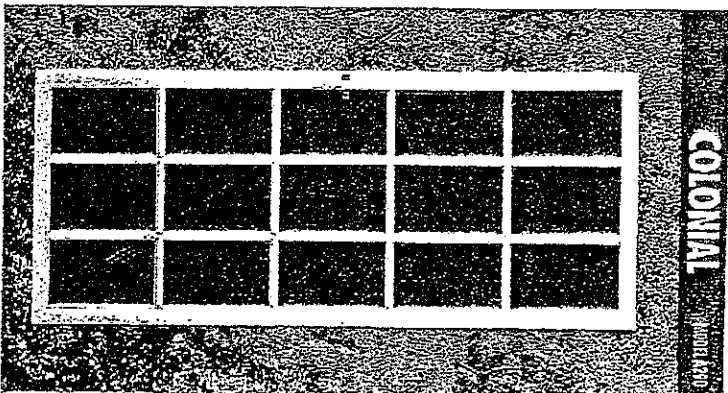
DRAWING SUBMITTED BY:  
AIR EXHIBITS AIR CONDITIONING # CZ5A00

# ARCHITECTURAL GUIDELINES FOR SCREEN DOORS

## SECTION B. SCREEN DOORS:

Screen doors shall be  
3'0" x 6'-8" aluminum  
frame door, white in  
color by METAL  
INDUSTRIES, KANE,  
SCREEN PRODUCTS or  
approved equal.

*Crosspointe*



**Colonial** Styling blends with contemporary window designs. With its rigid extruded aluminum grid pattern, extruded aluminum frame, and aluminum construction, the Colonial continues to grow in popularity.

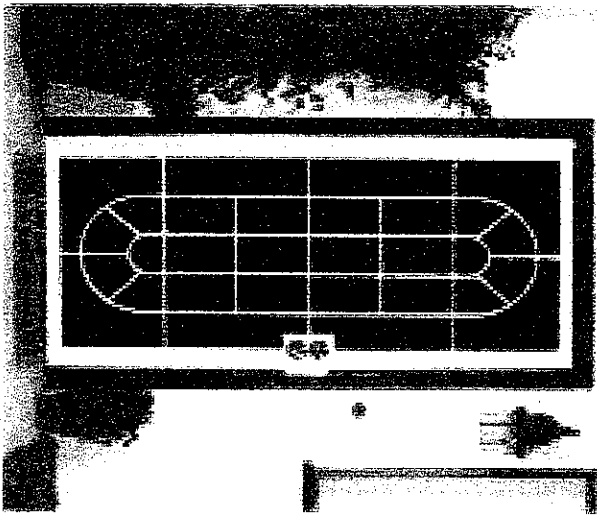
**Built to last**  
 Heavy-duty extruded aluminum colonial grid tested directly to meet FEMA.

Highest quality gasketed lead, pressure clean, color lasting hinges.

Standard: Inset/flush installation. Clear: 18" x 16" x 0.021 inch. Hinges included.

**Finish Options**  
 Bronze, Silver, White, Black, Dark Steel, Bronze

**Size**  
 30" x 48", 24" x 48", 24" x 36", 36" x 48"



**36" White Atrium Security Door**  
 \*1/2" steel frame \*Opaque steel mesh privacy screen securely welded to door \*Double-hole security lock box with intruder-resistant design \*Tamper-proof hinges \*1-YEAR WARRANTY #220011

**Contact:** 

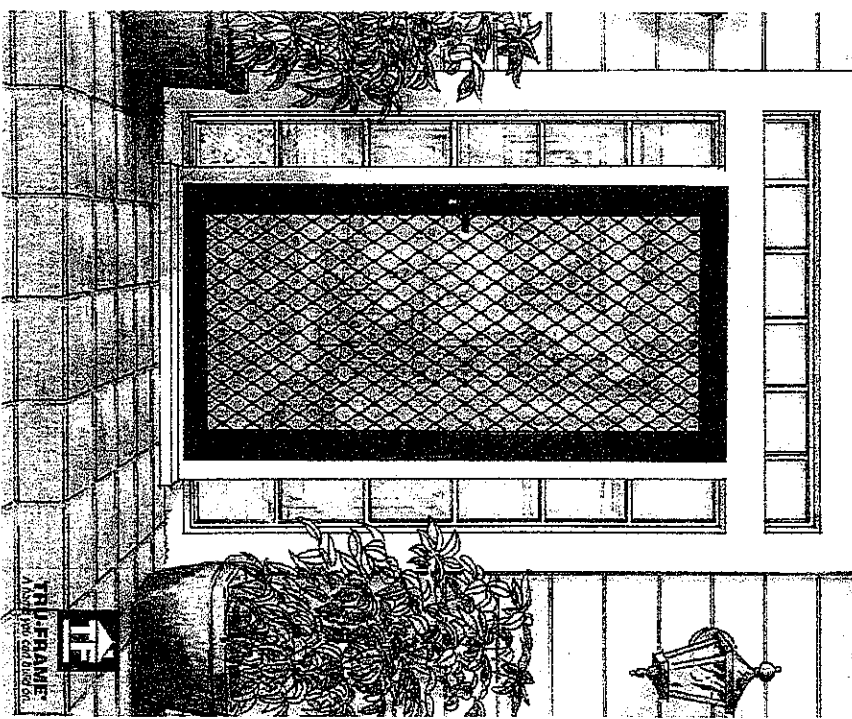
**SCREENS & THINGS**  
 Hardware

2960 Makunna Street  
 Honolulu, HI 96819-4425  
 Lic.# C-17324

Telephone: (808) 836-1333  
 Fax: (808) 833-3735  
 E-mail: screens.things@gte.net

**APPROVED** FOR  
*Crosspointe*

**Strength That Stops.**  
 True-Frame Security Screen Doors

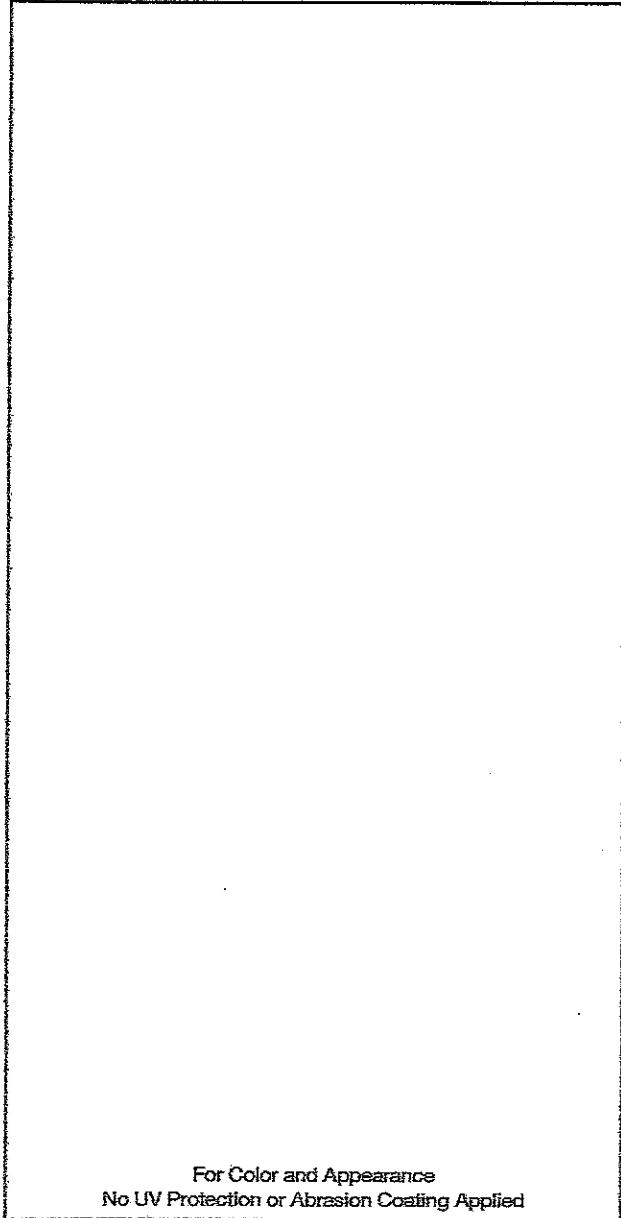


# 3M

# Scotchint™

## Sun Control Window Film

RE20NEARL High Performance Neutral

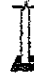

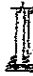
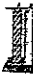


Inside View





### Product Benefits

- Reduces air conditioning costs.
- Reduces glare and eye discomfort.
- Furniture and fabrics have a longer acceptable life.
- Increase personal safety from flying glass.

### Product Performance

With RE20NEARL				
Solar Heat Reduction	59%	46%	31%	25%
Heat Loss Reduction	0%	0%	0%	0%
Glare Reduction	82%	82%	82%	80%
UV Blocked	99%	99%	99%	99%
Total Solar Energy Rejected	66%	68%	51%	64%

### Technical Data

Glass Type	Applied Product	Shading Coefficient	Visible Light		Emissivity	"U" Value
			Reflected	Transmitted		
	None	0.94	8%	88%	0.84	1.06
	RE20NEARL	0.39	17%	16%	0.84	1.06
	None	0.69	5%	50%	0.84	1.06
	RE20NEARL	0.37	8%	9%	0.84	1.06
	None	0.81	14%	78%	0.84	0.50
	RE20NEARL	0.56	21%	14%	0.84	0.50
	None	0.55	8%	45%	0.84	0.50
	RE20NEARL	0.41	11%	9%	0.84	0.50

Not recommended unless reviewed by 3M sales representative.

# Solar Control Film Performance Data

## Llumar

1/8-inch (3mm) Single-Pane, Clear

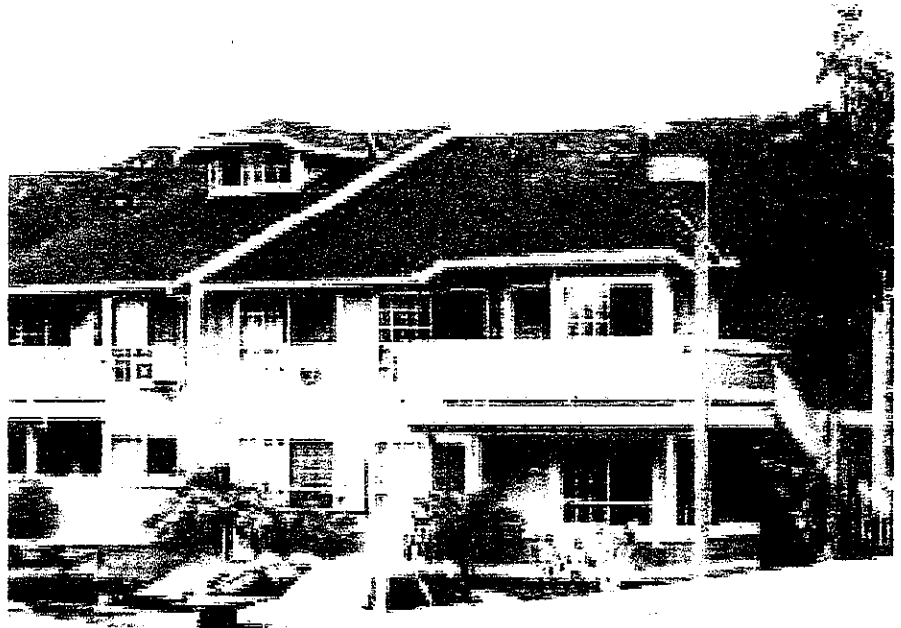
	% Solar Transmittance	% Solar Reflectance	% Solar Absorptance	% Visible Light Transmittance	% Visible Light Reflected	Visible Light Wavelength "U" Value	Shading Coefficient	% Ultraviolet Rejected	Emissivity	Solar Heat Gain Coefficient	% Total Solar Energy Rejected	Luminous Efficacy	% Solar Heat Reduction	% Glare Reduction
Class only:	88	0	0	90	0	1.03	1.00	29	0.84	0.86	14	0.92	0	0
<b>REFLECTIVE SERIES</b>														
R-15B SR CDF (Bronze)	10	35	55	10	19	0.94	0.28	99	0.79	0.24	76	0.35	72	89
R-15G SR CDF (Gray)	9	33	58	7	13	0.94	0.29	99	0.79	0.25	75	0.24	71	92
R-15BL SR PS (Blue)	10	38	52	11	25	0.94	0.29	99	0.79	0.25	75	0.38	71	88
R-15GD SR PS (Gold)	11	50	39	14	52	0.94	0.25	99	0.79	0.21	79	0.56	71	84
R-30B SR CDF (Bronze)	24	22	54	22	12	0.99	0.43	99	0.74	0.37	63	0.51	57	76
R-30G SR CDF (Gray)	24	22	54	23	13	0.97	0.44	99	0.74	0.37	63	0.51	57	76
PCR-15BL SR CDF (Blue)	15	25	60	13	22	1.00	0.37	99	0.76	0.32	68	0.50	56	74
PCR-35GN SR CDF (Green)	28	25	47	33	22	0.99	0.46	99	0.69	0.40	60	0.72	54	63
R-20-SR CDF (Silver)	14	54	32	18	62	0.94	0.24	99	0.71	0.21	79	0.76	76	80
R-35 SR CDF (Silver)	22	43	35	29	51	0.99	0.35	99	0.73	0.32	66	0.78	64	69
R-50 SR CDF (Silver)	38	28	36	49	27	0.97	0.53	99	0.75	0.46	54	0.92	47	46
<b>DRY-FINISH SERIES</b>														
DR-15 SR CDF (Gray/Silver)	16	37	47	15	37	0.92	0.30	99	0.69	0.26	74	0.50	70	83
DR-25 SR CDF (Gray/Silver)	25	26	49	22	27	0.92	0.47	99	0.67	0.35	65	0.54	59	76
DR-35 SR CDF (Gray/Silver)	35	19	46	35	19	0.93	0.52	99	0.67	0.44	56	0.59	48	60
<b>EMERALD SERIES</b>														
E-1220 SR CDF (Silver)	9	57	34	13	65	0.77	0.24	99	0.35	0.21	79	0.54	76	86
<b>DELTA SERIES</b>														
DL-05 G-SR CDF (Gray)	14	25	61	6	13	0.92	0.35	99	0.62	0.30	70	0.17	66	83
DL-15B SR CDF (Bronze)	27	73	60	14	8	0.98	0.45	99	0.77	0.39	61	0.31	55	84
DL-15G SR CDF (Gray)	26	15	59	16	9	0.99	0.45	99	0.78	0.39	59	0.38	55	82
DL-30GN SR PS (Green)	29	20	61	30	17	0.98	0.63	99	0.76	0.46	64	0.57	47	67
<b>NEUTRAL SERIES</b>														
N-1020 SR CDF (Neutral)	22	26	52	24	31	1.05	0.43	99	0.84	0.37	63	0.56	57	73
N-1040 SR CDF (Neutral)	36	16	49	44	16	1.00	0.58	99	0.67	0.50	50	0.71	42	64
N-1050 SR CDF (Neutral)	44	13	43	50	15	1.03	0.64	99	0.84	0.55	45	0.78	36	44
N-1055 SR CDF (Neutral)	65	9	26	71	10	1.03	0.82	99	0.84	0.71	29	0.87	18	21
N-1020B SR CDF (Bronze)	14	44	42	21	37	0.93	0.26	99	0.69	0.23	77	0.61	74	77
N-1025B SR CDF (Bronze)	27	35	38	38	25	0.94	0.43	99	0.71	0.38	62	0.68	57	68
N-1050B SR CDF (Bronze)	43	23	34	55	16	0.96	0.57	99	0.73	0.49	51	0.95	43	39
<b>NOIR SERIES</b>														
NRM-PS2 (Frosty)	67	18	15	69	20	1.03	0.82	98	0.84	0.72	28	0.84	18	23
NRM-PS2 (Bronze)	50	13	37	36	17	1.03	0.69	98	0.84	0.61	36	0.52	31	60
NRM-PS3 (Black)	0	11	89	0	13	1.03	0.32	100	0.84	0.26	72	0.00	68	100
NRM-PS3 (White)	10	49	41	7	58	1.03	0.26	99	0.84	0.22	78	0.28	75	92
NRM-PS2 (Silver)	13	57	30	16	60	1.03	0.24	99	0.72	0.21	79	0.57	75	82
<b>UV CL. SR PS (Clear)</b>	84	9	7	84	9	0.99	0.99	99.9	0.83	0.86	14	0.85	1	7
<b>REFLECTIVE SERIES</b>														
NRM FS SR HPR (stripes)	72	17	11	73	20	1.03	0.90	99	0.84	0.79	21	0.81	10	19
NRM FB SR HPR (bands)	63	19	18	63	23	1.03	0.80	99	0.84	0.70	30	0.79	20	30
NRM FTL SR HPR (thin lines)	70	19	11	73	20	1.03	0.84	99	0.84	0.73	27	0.85	16	19
NRM FSD SR HPR (small dots)	78	12	10	82	13	1.03	0.84	99	0.84	0.81	19	0.87	6	9
NRM FMD SR HPR (mini dots)	76	22	11	81	15	1.03	0.91	99	0.84	0.79	21	0.88	9	10
NRM MSQ SR HPR (matte squares)	61	20	19	61	25	1.03	0.75	99	0.84	0.77	34	0.80	25	32
NRM FSQ SR HPR (squares)	68	16	16	69	20	1.03	0.87	99	0.84	0.65	23	0.79	13	23
<b>FROSTED SPARKLE</b>	70	16	14	73	19	1.03	0.85	99	0.84	0.65	23	0.79	13	23
<b>RICE PAPER</b>	63	23	14	67	25	1.01	0.77	99	0.84	0.67	33	0.87	23	26
<b>REFLECTIVE SERIES</b>														
BLUE SR HPR	61	8	31	28	8	1.03	0.80	98	0.84	0.70	30	0.35	20	69
GREEN SR HPR	46	7	47	32	8	1.03	0.68	98	0.84	0.59	41	0.47	32	71
RED SR HPR	53	8	33	26	8	1.03	0.79	98	0.84	0.69	31	0.33	21	6
YELLOW SR HPR	73	9	18	85	8	1.03	0.90	98	0.84	0.78	22	0.94	10	3
<b>SAFETY SERIES</b>														
SCL SR PS4	61	9	10	69	10	1.03	0.97	95	0.84	0.84	16	0.92	3	1
SCL SR PS6	79	9	12	88	10	1.03	0.94	99	0.84	0.82	18	0.94	6	2
SCL SR PS7	81	9	10	88	10	1.06	0.96	95	0.84	0.84	15	0.92	4	2
SCL SR PS8	78	9	13	88	11	1.03	0.94	99	0.84	0.82	18	0.94	6	2
SCL SR PS11	76	9	13	85	11	1.03	0.93	99	0.84	0.81	19	0.91	7	6
SCL SR PS15	75	10	14	83	11	1.03	0.92	99	0.84	0.80	20	0.90	8	8
R-20 SR PS4 & 8	24	22	54	22	12	0.96	0.43	99	0.74	0.37	63	0.51	57	76
N-1020 SR PS4 & 8	14	54	32	18	62	0.94	0.24	99	0.71	0.21	79	0.75	76	80
N-1040 SR PS4 & 8	36	16	48	41	18	1.03	0.55	99	0.84	0.47	63	0.56	57	73
N-1050 SR PS4 & 8	44	13	43	50	15	1.03	0.64	99	0.84	0.55	45	0.78	36	44
NUV65 SR PS4	63	9	28	63	11	1.03	0.79	99.9	0.84	0.71	29	0.80	21	21
<b>REFLECTIVE SERIES</b>														
GCL SR PS4	81	8	10	89	10	1.02	0.97	95	0.84	0.84	16	0.92	3	1
GCL SR PS6	79	8	13	89	10	1.02	0.95	99	0.84	0.83	17	0.94	5	1
<b>EMERALD SERIES</b>														
RK-20 PS (Silver)	14	65	21	18	62	1.02	0.23	99	0.71	0.20	80	0.78	77	80

ACE SECURITY LAMINATES

## Crosspointe...be Secure!

### Is your home vulnerable?

- 66% of all break-ins occur through glass.
- Hawaii had the 2nd highest overall property crime rate in 2000.
- The value of property stolen in Hawaii during 2001 was up 11.7% over 2000.
- The value of property stolen in Hawaii during 2002 was up 6.5% over 2001.
- 85% of blast injuries are due to flying glass.
- Damage to structures is dramatically with the loss of doors and windows.
- Taping windows is not recommended.
- More damage is likely to happen should windows be left open in a hurricane to equalize pressure.



Most contractors feel that 15 mil film is "overkill", please be advised that the minimum proven thickness for hurricane and security is between 9mil and 14mil. ACE products are government inspected and have passed third party testing in more categories than all major competitors.

ACE Security Laminates has a non-transferable limited lifetime warranty for its line of laminates against peeling, cracking, yellowing and delaminating .



At the Gentry Pacific Design Center

560 N. Nimitz Hwy, Suite 113

Honolulu, HI 96817

Ph: 808.548.3400

Fax: 808.548.3401

ace@hawaii.rr.com

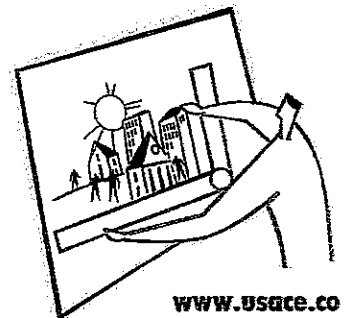
Call for a Free Estimate

# 548-3400

KATHLEEN CHAMBERLIN

Security Consultant

Be Safe...Secure...Protected!



www.usace.co

Basic Architectural Guidelines for Miscellaneous  
Homeowners Requests

*Crosspointe*

SECTION H. COURTYARD PLANTING:

- 1) Plant locations shall be as suggested in the attached drawings CP7 and CP8.
  
- 2) Homeowners are encouraged to use potted plants as much as possible to better control growth of plantings in the courtyard areas.

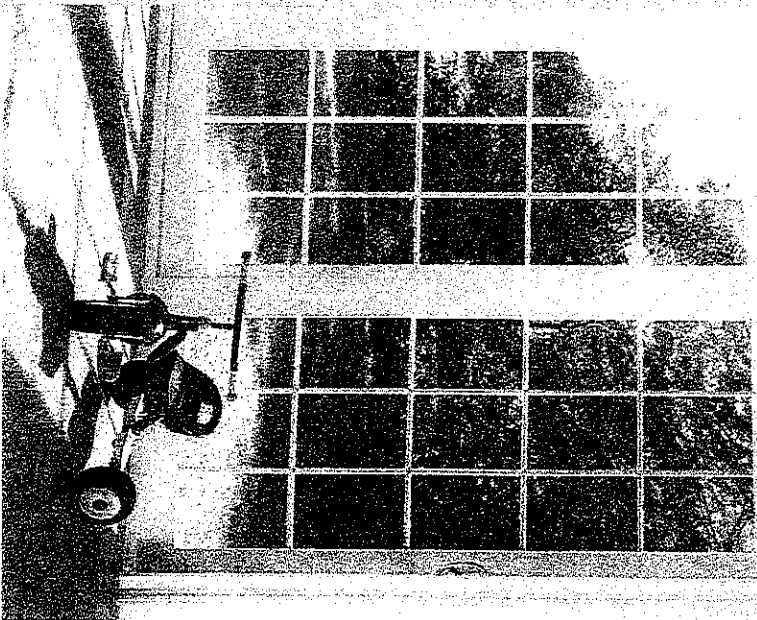
# New Castle XT Patio Doors French or Standard Rail Style

## Features and Benefits

- Seinless-steel rollers provide a smooth glide
- Self-latching, heavy-duty aluminum screen has separate track and rollers for smooth operation
- Two-point lock with adjustable strikes is standard on 2- and 3-panel doors and four-point lock is standard on 4-panel doors
- Shock-lock in 4-panel doors for added security
- 3/4" insulated, tempered glass unit for excellent thermal performance
- Anodized aluminum threshold cover
- Fully fusion-welded corners in panel and frame

## Options

- White or almond
- 4-point lock system on 2- and 3-panel doors
- Polished gold color interior handle
- Saddles and transoms
- Exterior key lock
- Thermaclear® glazing system with low-conductance spacer and insulating argon gas
- Panels can be made with 2-1/2" sills and rails, when a more standard look is desired
- PrismGrid™ optional beveled glass



West Coast Wholesale

Greg Hirata

P.O. Box 6305 • Kaimohe, HI 96744  
808-554-7474 • Fax: 808-456-0538  
email: ghiratawv@yahoo.com

Contact:

## Sliding Patio Doors and Hinged Door

### The door with more design flexibility

Gambini's sliding patio doors offer exceptional design flexibility with a choice of styles, plus a selection of saddles and transoms that allow builders to create larger and more beautiful combinations than ever before.

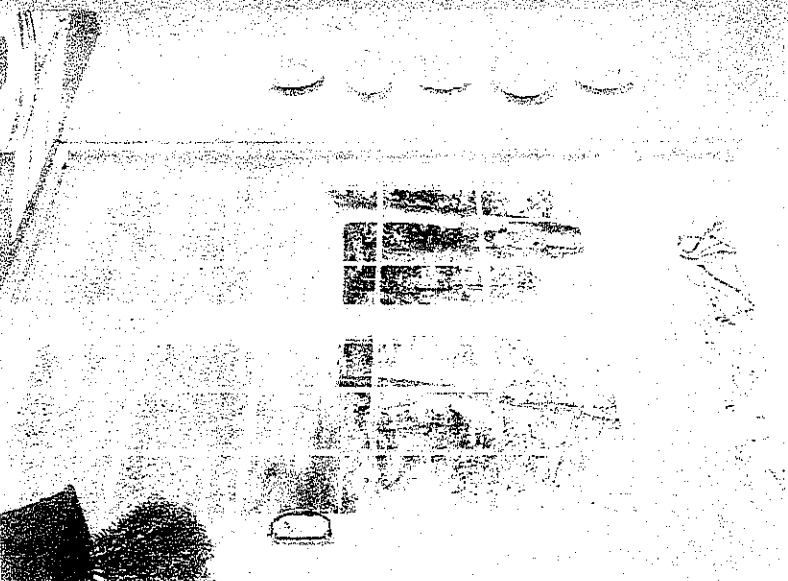
### Easy operation

Heavy-duty rollers on sliding patio doors and the adjustable hinge system on the hinged doors assure trouble-free performance and easy operation.

### CHOOSE FROM A VARIETY OF PATIO DOORS

NEW CASTLE XT™  
INSULATE SERIES™  
INSULATE SLIMLINE SERIES™

**APPROVED** FOR  
*Crosspointe*



# EXTERIOR STRING LIGHTS GUIDELINES

Exterior string lighting is permitted subject to the following:

1. Exterior string lighting shall be low wattage lights.
2. Be sure packaging states that it is designated for outdoor usage.
3. String lights shall be exclusively white lights and clear bulbs.
4. String lights shall be tucked neatly under your fence line.
5. Please do not expose wires in view.
6. Check label on outdoor light marked ETL. This indicates an independent laboratory recognized by the Occupational Safety and Health Administration (OSHA) has tested the product.
7. Lights should be turned off when no one is present and they should not leave lights on overnight.
8. Check the manufacturer's guidelines to determine the number of lights that may be safely plugged together.
9. When possible, point the lamp socket down to avoid moisture build up and do not operate strings with missing bulbs.

Crosspointe

get your water heater installed by a professional, call 1-800-877-6420\*

**APPROVED** for

*Crosspointe*

**Product Overview:**

Tank Capacity: 40 gal.  
Item Weight: 135.0 lbs.

Tank:

Anode: 1  
Foam

Insulation Material: 8  
Insulation R Value: 1.7 ft.  
Insulation Depth: 36.3 g.p.h.  
Energy:

Recovery at 90 Degree Rise: 69 gal.  
LP Gas Gallons per Year: 279

First Hour Rating: 2

Controls:

Temperature Adjustment: External knob

Configuration:

Hourly BTU Input: 35,500  
Gas Fuel Type: Standard

Required Vent Size: 3 in.

Warranty: 6 year limited  
Tank Warranty: 5 year limited  
Parts Warranty:

Dimensions:

Height: 55-1/2 in.  
Height with Diverter: 60 in.  
Diameter: 18-1/4 in.

Power:

Type: Gas  
Gas Type: LP Gas

**28999**

Kennmore® Power Miser™ 9, 40-gal. electric water heater Self-cleaning Roto-Swirl, 9 yr. warranty #32946

Kennmore Power Miser 9 30-gal. Natural Gas Water Heater

\*If not available, see store for details. †Water heater & hot water heater available by Sears and Roebuck and Co. ©1995 Sears, Roebuck and Co.

# STORAGE SHED

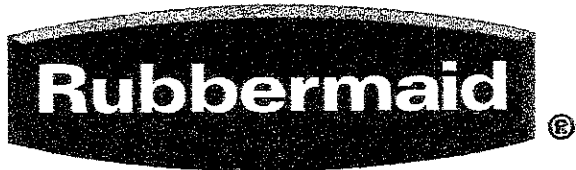
Please remember that a written request for a storage shed needs to be submitted and approved by the Crosspointe Board of Directors.

Crosspointe Association has approved several different styles (please see attached).

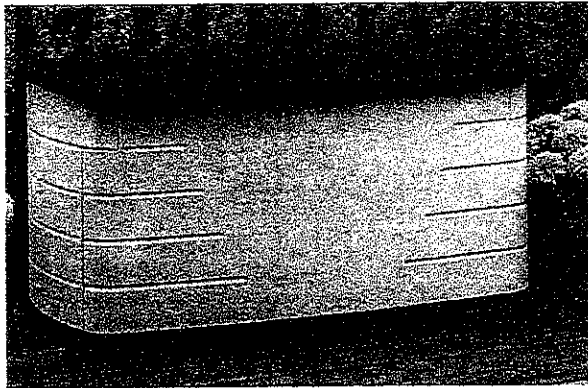
A member of the committee will meet with you to approve a suitable storage shed for your courtyard or lanai.

Should you have any questions please contact Sam Kawelo, the Resident Manager, at 487-2705.

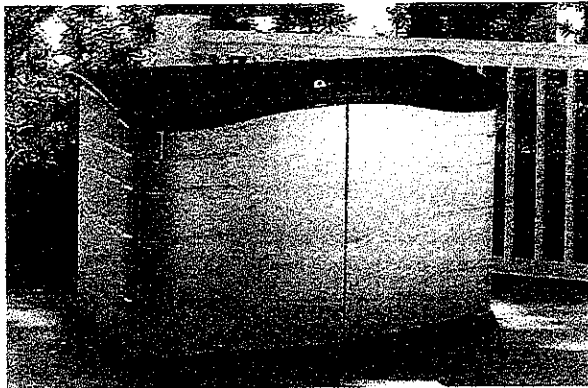
Crosspointe



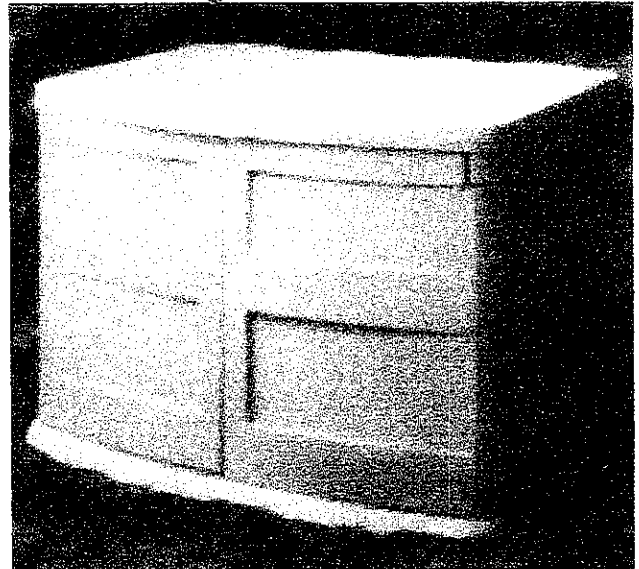
**APPROVED** for  
*Crosspointe*  
**Sears**



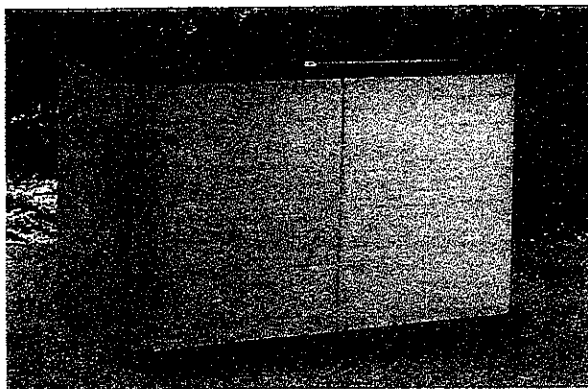
DECK STORAGE BOX 3761  
42 X 24 X 24 / 10 CU FT



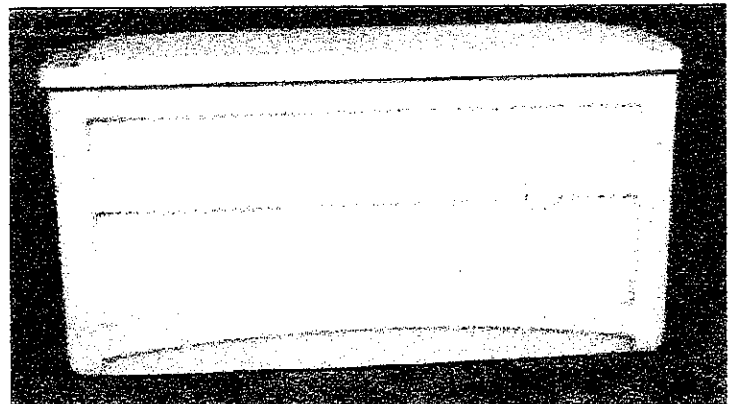
HORIZONTAL STORAGE SHED 3748  
55 X 28 X 36 / 18 CU FT



SUNCAST 4-1/2 X 3 FT. GARDEN SHED,  
HORIZONTAL 55" L X 30" W X 34" H  
SEARS ITEM #071650200000  
MFR. MODEL #Gs2000



LARGE HORIZONTAL STORAGE SHED 3747  
60 X 32 X 47 / 32 CU FT



22 D X 24 H X 45 W  
APPROVED FOR SECOND FLOOR LANAIS

# SMOKE DETECTORS

## GENERAL INFORMATION

If your detector begins to emit "beeps" every minute or so and continues to beep up to a week or longer, that means the battery has begun to fall below the safe minimum of power and should be replaced. The newer models may have a long life battery that will last up to 10 years.

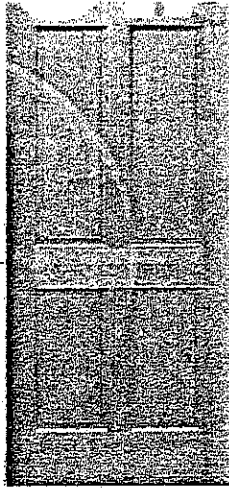
There are also some newer models that are considered "tamper proof" and contain a battery this is sealed in the detector. The tamper proof models have a life expectancy of approximately 10 years and will require full replacement once the battery is out of power.

Here are some important tips:

1. It is extremely important to regularly test and clean all detectors. Please follow manufacturer's instructions on how to clean and test your detector.
2. Replace batteries in battery-operated units once a year or in accordance with the manufacturer's recommendations.
3. Teach everyone in your house to leave working batteries in smoke batteries and not to use them elsewhere.
4. Do not paint the smoke detector units.
5. Cobwebs and dust can impair a detector's sensitivity. Most units should be vacuumed at least once a year.

Crosspointe

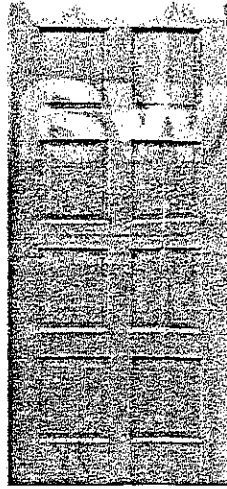
# Your source for doors!



Buffelen  
**200<sup>99</sup>**

**3'0" x 6'8" 2044  
Wood Entry Door**

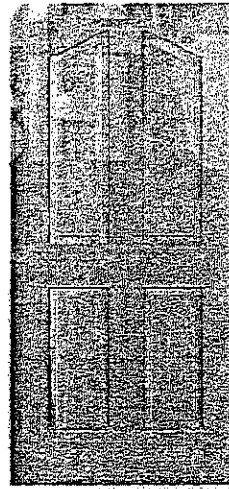
- 1-3/4" thick solid-core
- Unfinished
- Slab only. #302044DR



Buffelen  
**208<sup>99</sup>**

**3'0" x 6'8" 2010  
Wood Entry Door**

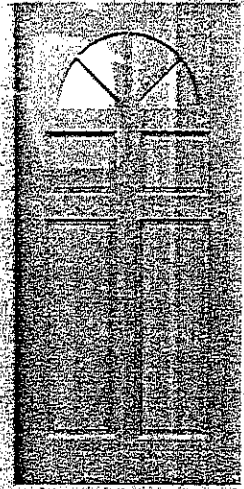
- 1-3/4" thick solid-core
- Unfinished
- Slab only. #302010DR



Buffelen  
**265<sup>99</sup>**

**3'0" x 6'8" 2144  
Wood Entry Door**

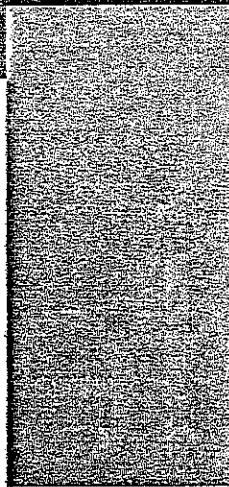
- 1-3/4" thick solid-core
- Unfinished
- Slab only. #302144DR



Buffelen  
**265<sup>99</sup>**

**3'0" x 6'8" 2020  
Wood Entry Door**

- 1-3/4" thick solid-core
- Unfinished
- Slab only. #302020DR

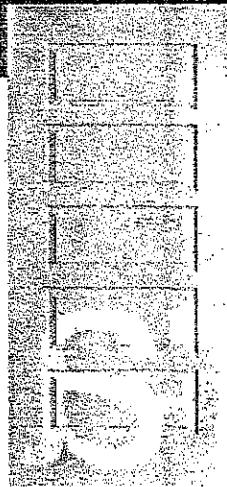


Masonite  
**48<sup>29</sup>**

**3'0" x 6'8" Birch  
Interior Door**

- 1-3/8" thick hollow-core
- Unfinished
- Slab only. #30HCB

**2'0" #20HCB ..... 37.99**  
**2'6" #26HCB ..... 41.89**  
**2'8" #28HCB ..... 45.99**

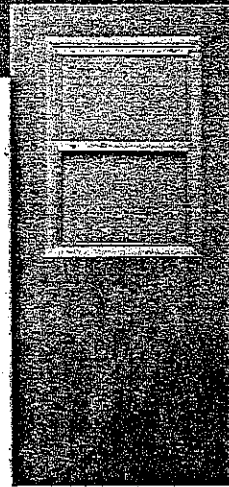


Masonite  
**49<sup>99</sup>**

**3'0" x 6'8" Riverside  
Interior Panel Door**

- 1-3/8" thick hollow-core
- Shaker-style panel detail
- Primed, ready for paint
- Slab only. #30RV

**2'0" #20RV ..... 39.99**  
**2'6" #26RV ..... 43.99**

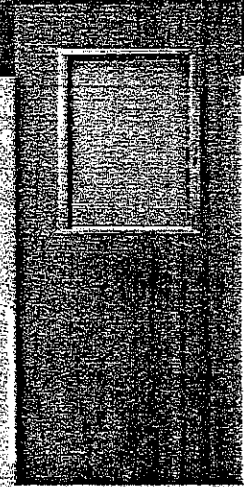


Masonite  
**176<sup>99</sup>**

**3'0" x 6'8" Bel-Air  
Exterior Door**

- 1-3/4" thick solid-core
- Obscure glass
- Anodized aluminum frame
- Unfinished. #30SCBA

**2'6" #26SCBA ..... 162.99**  
**2'8" #28SCBA ..... 169.99**

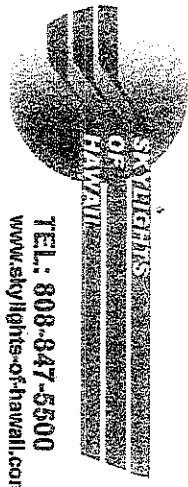


Masonite  
**191<sup>99</sup>**

**3'0" x 6'8" Half  
Jalousie Ext. Door**

- 1-3/4" thick solid-core
- Obscure glass
- Anodized aluminum frame
- Unfinished. #30LJ

**2'6" #26LJ ..... 178.99**  
**2'8" #28LJ ..... 185.99**



TEL: 808-847-5500  
www.skylights-of-hawaii.com

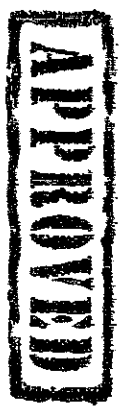
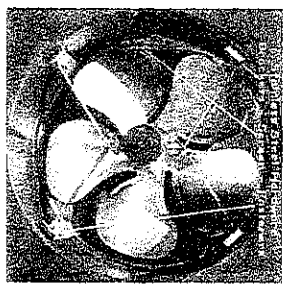
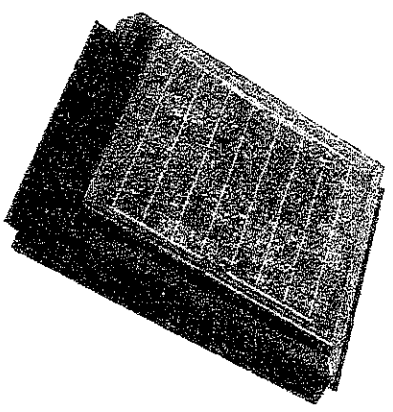
**PRODUCT UPDATE  
NOTICE**

**Super Cyclone Solar Powered Turbo Fan**

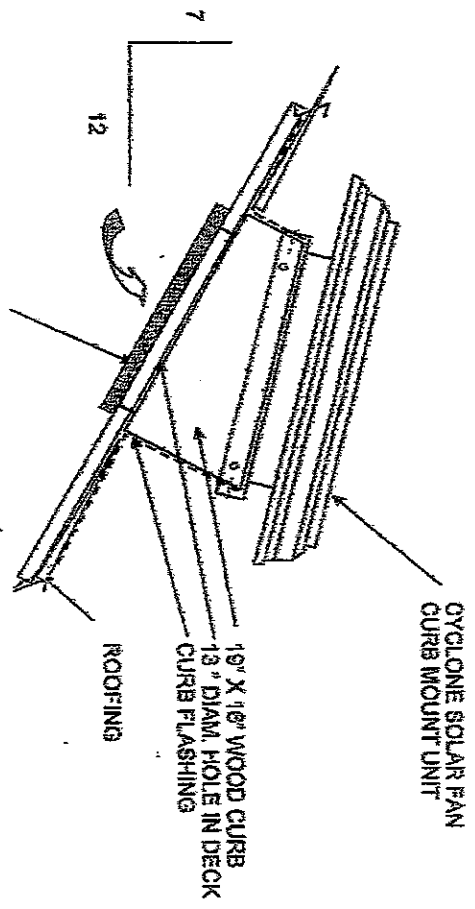
Skylights of Hawaii presents the latest in Solar Fan Technology - The Super Cyclone Solar Powered Turbo Fan. It is powered by a 20watt photovoltaic solar panel (TWICE the power of other solar fans), which makes it the most powerful solar fan on the market! Check out these features and compare for yourself!

- ☉ Power: 20 watt solar panel
- ☉ Capacity: 1275 CFM/76,500 CFH
- ☉ Motor: 1.36 VDC Permanent Magnet
- ☉ Housing: 3/16" ABS UV Stable HOWARD print
- ☉ Mounting: Self Flashed or Curb Mount
- ☉ Fan Blade: 4 piece Aluminum 1/2" - 5 Blade
- ☉ Brackets: 16AWG Stainless Steel
- ☉ Screen: 1/8" Stainless Steel
- ☉ Fasteners: Stainless Steel
- ☉ Aviation Nuts

The Super Cyclone comes with stainless steel hardware which makes it the very best fan for Hawaii! Homes are cooler and building materials last longer with solar fans!



FOR  
*Crosspointe*



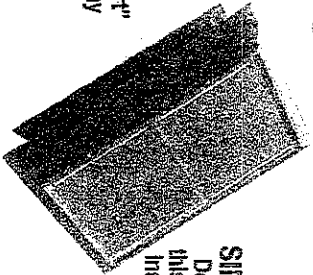
**SIDE VIEW  
SOLAR FAN MOUNTING DETAIL  
ROOF PITCH GREATER THAN 8:12  
N.T.S.**

# Cyclone Solar Fans

Quality That Shows

## THE CYCLONE

uses a 10 watt photovoltaic solar panel and moves up to 850 CFM. Both the Cyclone & Super Cyclone incorporate the latest "State-of-the-Art" solar panels designed to provide many years of maintenance free service as well as resist deterioration.



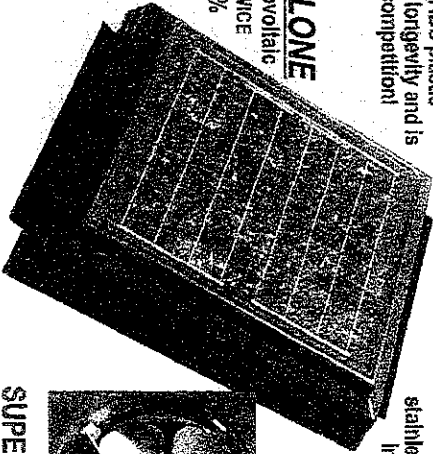
## SIMPLE INSTALLATION

Designed as an all-in-one unit this highly efficient venting fan installs easily in any situation. No electrical hook-up, and no assembly required.

**FRAME STRUCTURE** for both the Cyclone and Super Cyclone is a single piece 3/16" molded from UV stabilized ABS plastic for maximum strength and longevity and is one-third thicker than the competition!

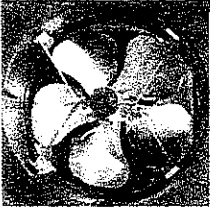
## THE SUPER CYCLONE

uses a single 20 watt photovoltaic solar panel and delivers TWICE THE POWER and moves 50% more hot air than other solar fans and moves up to 1275 CFM.



## STAINLESS HARDWARE

The only fan with stainless steel hardware including brackets, 1/8" screws and fasteners.



## SUPER QUIET FAN

designed specifically for the CYCLONE and moves air efficiently without noise.

## SUPERIOR

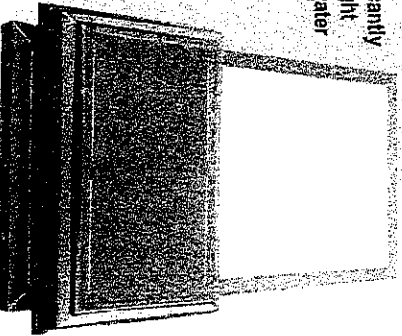
- ~Features
- ~Quality
- ~Performance
- ~Longevity

## THE VENTALLIGHT

**SUPERIOR LIGHTING & COOLING**  
The Ventallight System moves significantly more air volume than a venting skylight while eliminating the chance of any water penetration even during storms.

Combined with a large translucent skylight you get the benefits of a brighter home without the heat buildup.

Bronze baked powder coat frame finish. Double dome system. 80% light transmission white outer dome over a clear acryle inner dome.



**APPROVED**

FOR

*Crosspointe*

## RECOMMENDATIONS

Use the following charts to determine the number of CYCLONE or SUPER CYCLONE units you might require to properly cool your home. Note that these guidelines are just recommendations based on standard data. It is best to have one of our professionals to determine the heat load and best cooling solution for your individual situation.

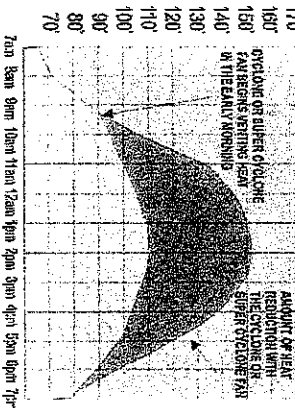
RECOMMENDED NUMBER OF CYCLONE SOLAR FANS

20	24	28	32	36	40	44	48
20	400	400	500	600	720	800	900
24	480	576	672	768	864	960	1056
28	560	672	784	896	1008	1120	1232
32	640	768	896	1024	1152	1280	1408
36	720	864	1008	1152	1300	1456	1600
40	800	960	1104	1272	1440	1616	1760
44	880	1056	1200	1376	1536	1712	1920
48	960	1152	1300	1472	1632	1808	2080
52	1040	1248	1400	1568	1728	1904	2240
56	1120	1344	1500	1664	1824	2000	2400
60	1200	1440	1600	1760	1920	2100	2560
64	1280	1536	1700	1856	2016	2200	2720
68	1360	1632	1800	1952	2112	2300	2880
72	1440	1728	1900	2048	2208	2400	3040

RECOMMENDED NUMBER OF SUPER CYCLONE SOLAR FANS

20	24	28	32	36	40	44	48
20	400	400	500	600	720	800	900
24	480	576	672	768	864	960	1056
28	560	672	784	896	1008	1120	1232
32	640	768	896	1024	1152	1280	1408
36	720	864	1008	1152	1300	1456	1600
40	800	960	1104	1272	1440	1616	1760
44	880	1056	1200	1376	1536	1712	1920
48	960	1152	1300	1472	1632	1808	2080
52	1040	1248	1400	1568	1728	1904	2240
56	1120	1344	1500	1664	1824	2000	2400
60	1200	1440	1600	1760	1920	2100	2560
64	1280	1536	1700	1856	2016	2200	2720
68	1360	1632	1800	1952	2112	2300	2880
72	1440	1728	1900	2048	2208	2400	3040

## SUMMER ATTIC HEAT REDUCTION



## THE CHARTS ABOVE

Indicate the recommended number of units to cool a specific area. Note that heat load, roof orientation and other factors determine the quantity of Cyclone Fans actually needed. Our experts will help you determine your exact requirements.

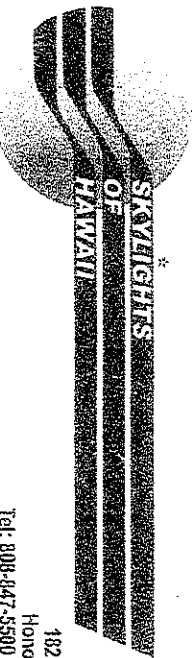
## THE CHART AT LEFT

gives you a clear graphic representation of the CYCLONE difference. The heat gain during an average day can be dramatically reduced, leaving a cooler home, a healthier environment and an increase in energy savings all-in-one product!

## WARRANTY

The CYCLONE or SUPER CYCLONE Solar powered Turbo Fans have a five year limited warranty and cover the products against defects in materials and workmanship. The warranty provides adequate time for any material or performance irregularity to be identified. Materials used in the Cyclone and Super Cyclone are expected to exceed the life expectancy of your roofing materials.

DISTRIBUTED BY:



1824 Dillingham Blvd.  
Honolulu, Hawaii 96819  
Tel: 808-847-5500 Fax 808-847-2244  
Email: info@skylights-of-hawaii.com

# CYCLONE

SOLAR POWERED VENTING FAN  
FOR ATTIC VENTILATION

## VENTILIGHT™ BRONZE BAKED POWDER FINISH

Combined with a large translucent skylight, you get the benefits of a brighter home without the heat buildup.

Frame structure of Cyclone and Super Cyclone is a one piece ABS plastic UV stabilized with a KORAD protection.

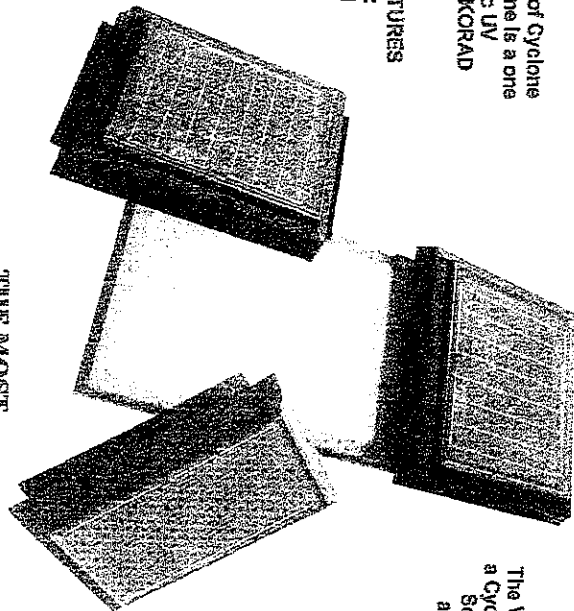
**EXCLUSIVE FEATURES FOR CYCLONES:**

- > Brackets
- > Screws
- > Fasteners

**SUPER CYCLONE**  
20" DIAMETER

Super Cyclone moves 1275 CFM of hot air from your house!

THE MOST POWERFUL AND EFFICIENT VENTILATING SYSTEMS EVER DESIGNED



Bronze baked powder coat finish with a double dome system, 80% light transmission while outer dome over a clear acrylic inner dome.

The Ventallight incorporates a Cyclone or Super Cyclone Solar Fan with a skylight and moves significantly more air volume than any venting skylight while eliminating the chance of water penetration. Cyclone Solar Fans are the most quiet on the market!

**THE MOST POWERFUL AND EFFICIENT VENTILATING SYSTEMS EVER DESIGNED**

Cyclone moves 1275 CFM of hot air from your house!

**SOLAR COOLING**  
for every climate & every home

25% MAINTAIN STATE ENERGY TAX CREDIT

**APPROVED**

FOR  
*Crosspointe*

### WHY YOU NEED IT!

During the day attic temperatures reach up to 150°F. These temperatures cause the attic air to expand causing a downward pressure that unvented will force heat into the living area and become stored throughout your home including the building structure. This radiant heat results in a hotter, less comfortable home that requires more energy to cool and for many homes larger energy hungry air conditioning systems. Such heat buildup also results in greater wear and tear on your home and roofing materials. Similar expansion occurs within an open beam or vaulted ceiling.

When you install the Cyclone or Super Cyclone, the temperature will be lowered by replacing this hot air with ambient temperature air and as a result your home will become much cooler. Solar energy that begins at dawn and continues throughout the day provides the energy to continuously move hot air out of your home, eliminating the heat buildup that causes these problems. A cooler home is the result. It can also add years to the life of your roofing materials and air conditioning system as a direct result of reduced heat gain.

### FEATURES

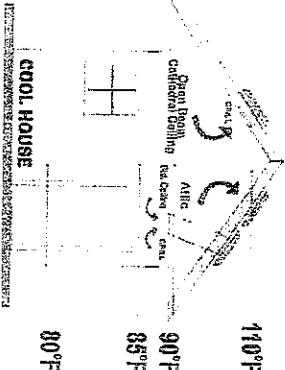
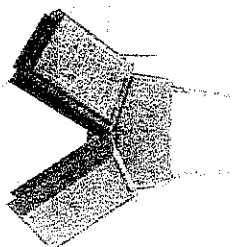
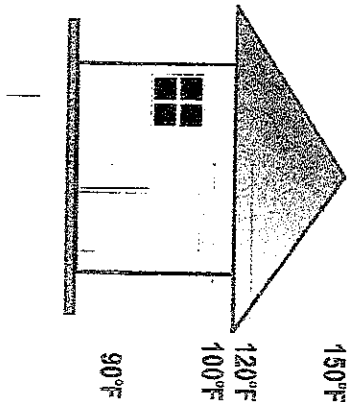
Leading Technology & Materials • The Cyclone and Super Cyclone incorporate State-of-the-Art technology and materials in each unit. Both units are the only solar powered fans that are manufactured to withstand the harsh coastal conditions along beach front properties using UV stabilized ABS composite plastic and stainless steel hardware. The solar panels operate in overcast or cloudy conditions and produce a maximum of 10 watts and 20 watts respectively that powers a quiet DC motor and a 6 blade 12" fan that can move up to 850 CFM (or 1275 CFM for the Super Cyclone) of hot air from your attic or house interior. The DC motor is designed especially for this application and operates at variable voltages to provide maximum air movement even in low light conditions. Additionally, the motor is sealed and operates only at approximately 1/3 of its capacity for many years of maintenance free operation.

### QUIET OPERATION

There is no motor noise that is often found with conventional AC motors, and no large bearing assemblies as is the case with turbine models. The combination of our highly efficient motor and our specially designed 6-blade fan provides airflow that is much quieter than other solar fans.

### APPEARANCE

The low profile of our CYCLONE solar fans along with the unique hood design makes each unit as inconspicuous on your roof as possible. Unlike ventilators such as wind turbines which stand out, the CYCLONE solar fan blends in.



# CONCRETE SLAB ON COURTYARDS

## 1. Limits:

- A. Concrete slab shall be at least 12" away from the inside face of the fence. (See attached drawing Cp1 entitled COURTYARD HARDSCAPE GUIDELINE).
- B. Concrete slab shall not cover existing concrete protection layer over Basaltic Termite Barrier.
- C. Concrete slab can abut to the existing concrete pad immediately outside the sliding door.

## 2. Materials:

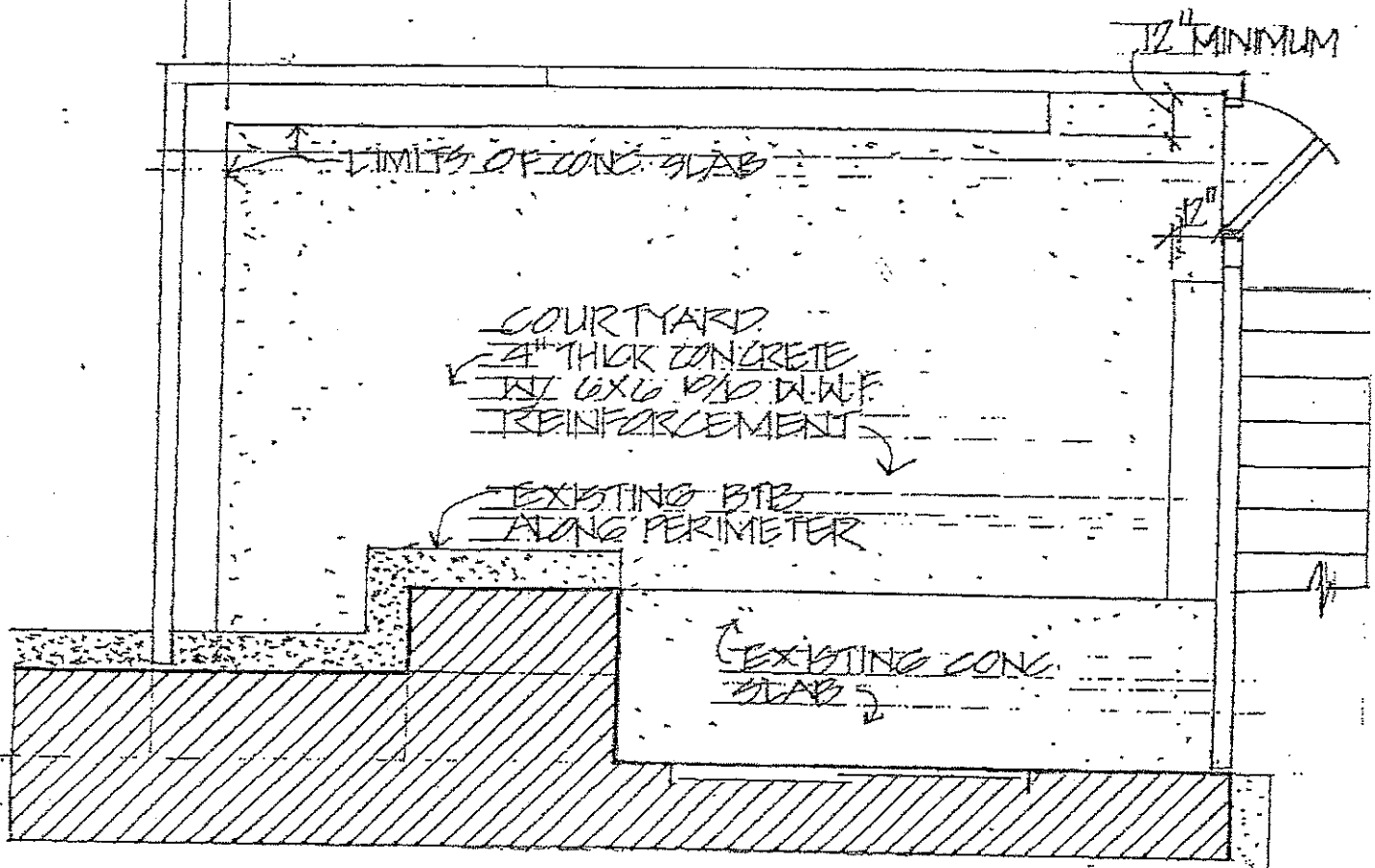
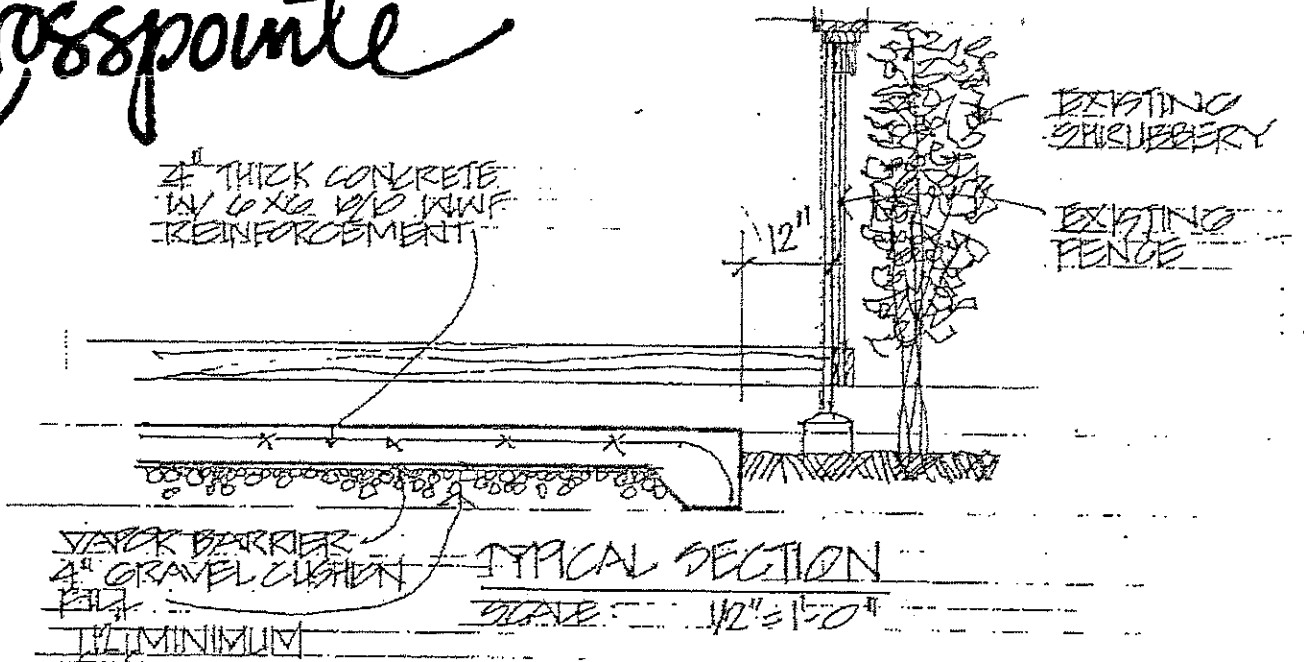
- A. Concrete slab shall be normal strength, 4" thick minimum and reinforced with 6x6 10/10 welded wire fabric.
- B. 4" thick gravel cushion fill.
- C. Polyethylene vapor barrier.

## 3. Soil Treatment:

- A. Provide soil poisoning on ground areas to be covered with concrete slab. Upon completion of the work, and as a condition of its acceptance, submit a copy of the Warranty to the Resident Manger for filing and future reference.

Crosspointe

# Crosspointe



## COURTYARD HARDSCAPE GUIDELINE

Drawn by BY  
Project No. 1001  
Date 1994  
Drawing No.

CP1

of Sheets

# ARCHITECTURAL GUIDELINES FOR PET BARRIER

## SECTION G. COURTYARD PET BARRIER

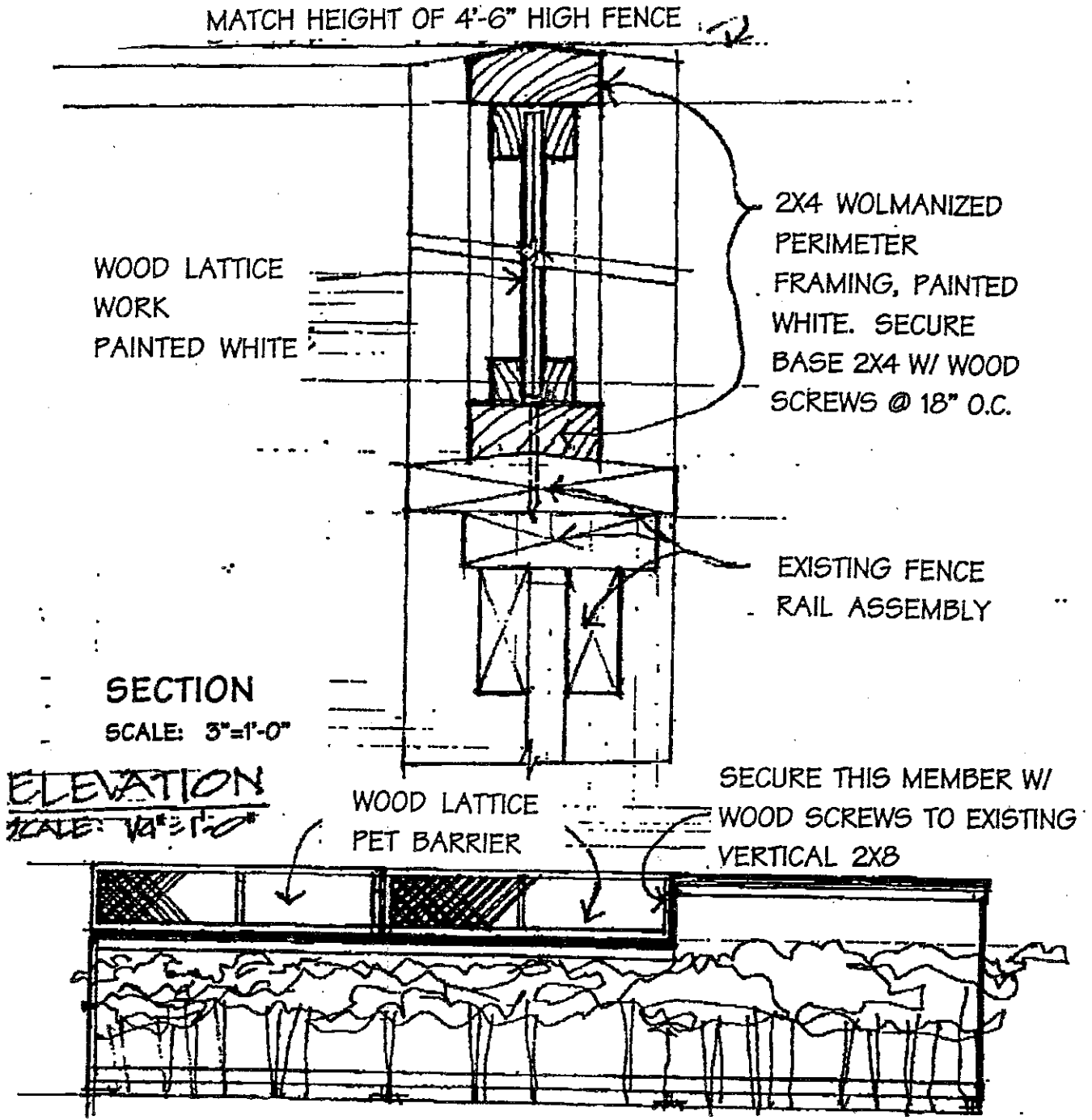
1. Pet barrier shall be installed according to the attached drawing CP6 entitled PET BARRIER GUIDELINE.

2. Height of the barrier shall not exceed 4'-6" to match the higher portion of the fence parallel to the unit.

*Crosspointe*

**APPROVED** for  
*Crosspointe*

**PET BARRIER  
GUIDELINE**



1. Pet barrier shall be installed according to drawing CP6 entitled PET BARRIER GUIDELINE.
2. Height of the barrier shall not exceed 4'-6" to match the higher portion of the fence parallel to the unit.

Drawn By: *BY*  
Project No. *1001*  
Date: *1/19/06*  
Drawing No.

**CP6**

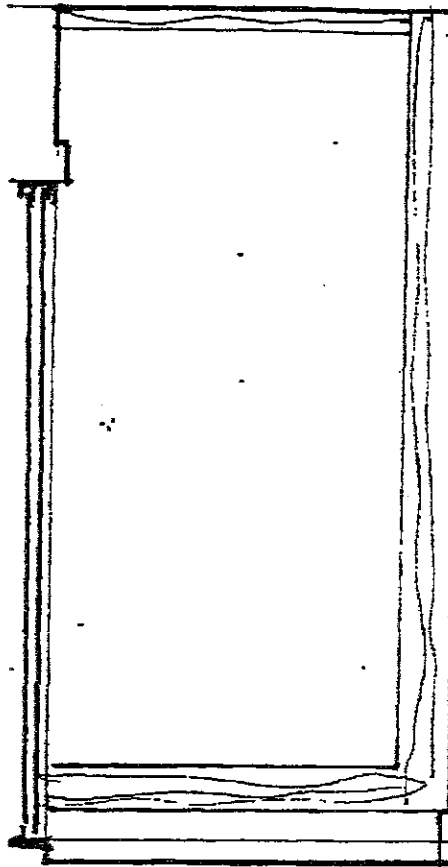
# Crosspointe

## BASIC ARCHITECTURAL GUIDELINES FOR MISCELLANEOUS CROSSPOINTE HOMEOWNERS REQUESTS - FEBRUARY 1996

### COURTYARD SUNSCREEN

1. Sunscreens shall be installed as shown on the attached drawing CP5 entitled SUNSCREEN GUIDELINE.
2. Installation shall be as such that easy removal will be facilitated.
3. Owner's request should state that when their unit is sold, the screen will be removed by the Owner.

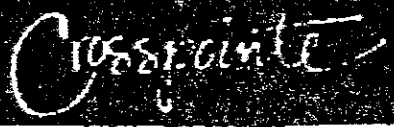
SECOND FLOOR  
LANAI



SUNSCREEN  
MAXIMUM WIDTH = 8'-0"  
MATERIAL:  
WOOD SLATS (MINI)  
VINYL OR LIGHT  
CANVAS

COLOR: WHITE  
OPERATION: ROLLED UP  
AND DOWN.

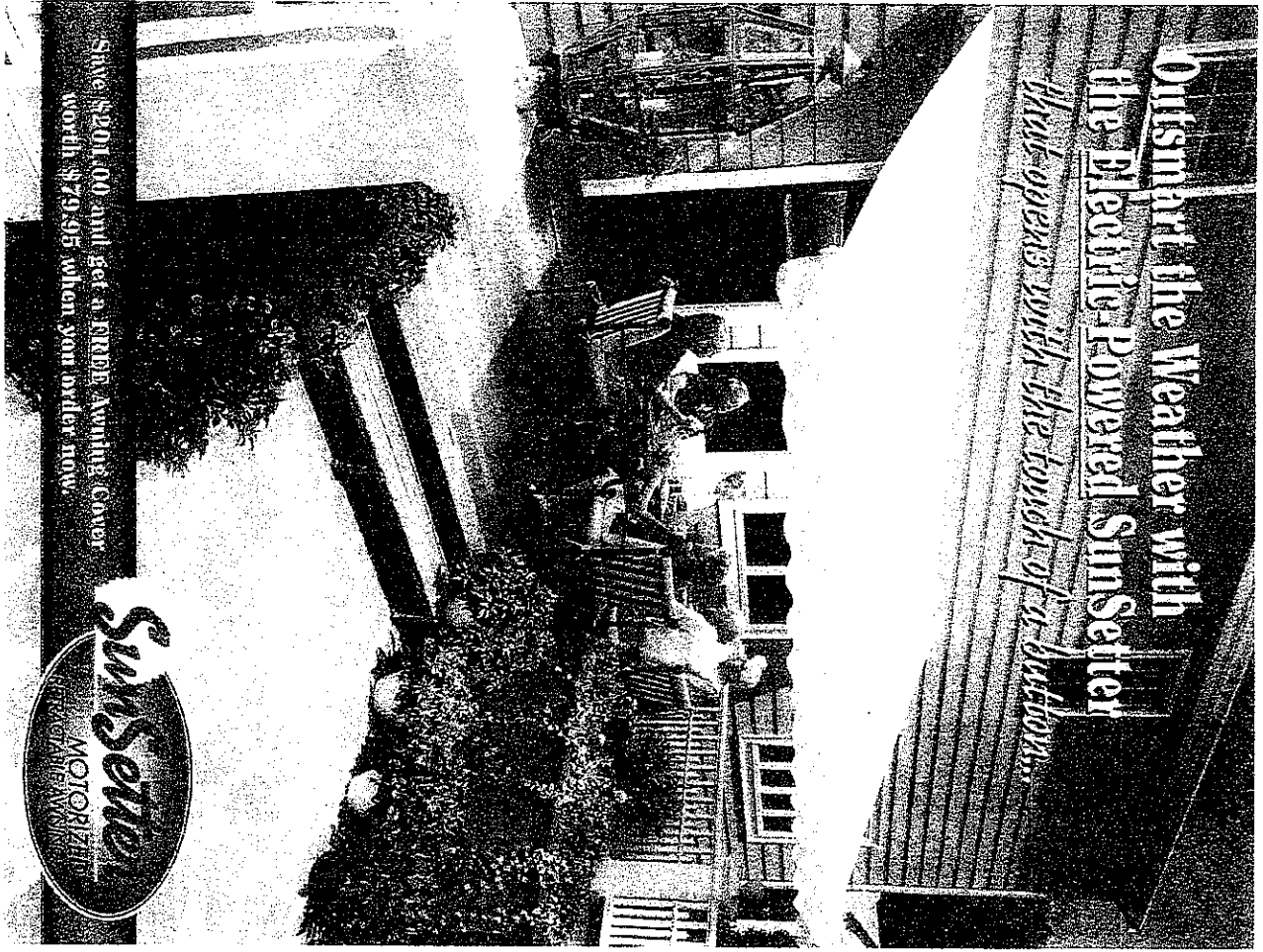
NOTE:  
APPLICABLE AT 2ND  
FLOOR ROOF EAVES ALSO



# SUNSCREEN GUIDELINE

Drawn by \_\_\_\_\_ BY \_\_\_\_\_  
Project No. \_\_\_\_\_  
Date \_\_\_\_\_  
Drawing No. \_\_\_\_\_

Outsmart the Weather with  
 the Electric-Powered SunSetter  
*that opens with the touch of a button.*



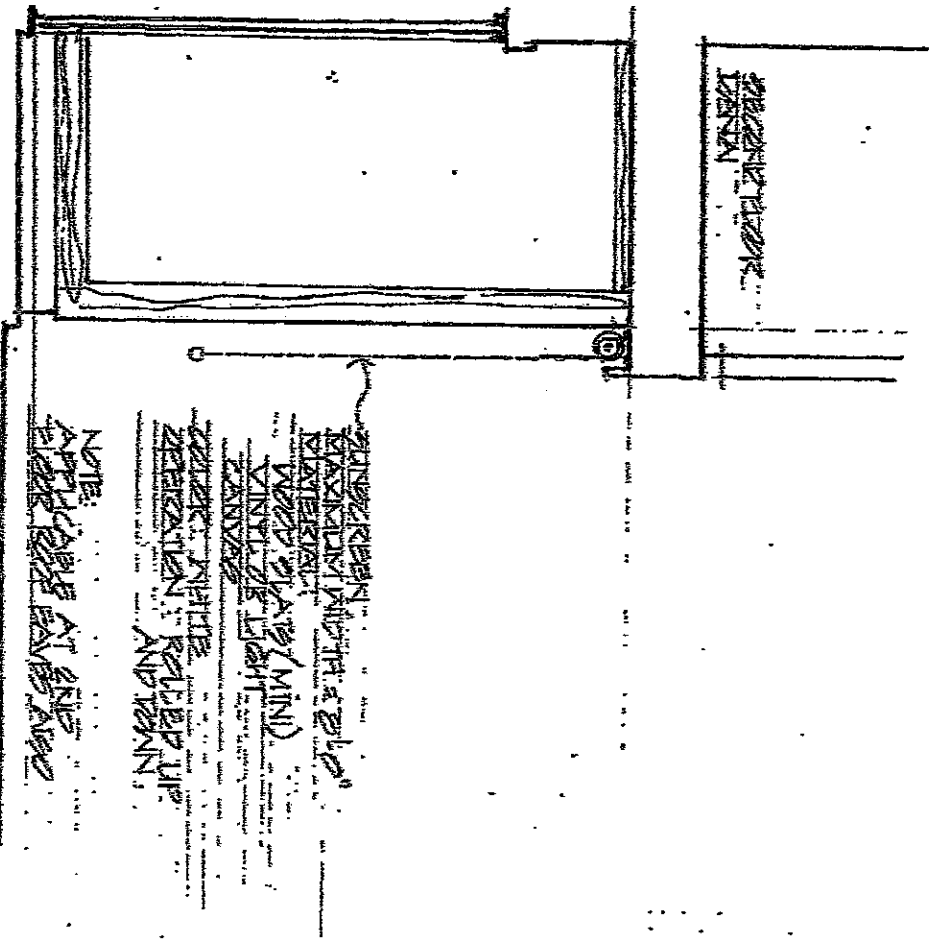
Save \$201.00 and get a FREE Weather Cover  
 worth \$79.95 when you order now.



TOLL FREE: 1-800-876-2340  
 WWW.SUNSETTER.COM

**APPROVED** FOR

*Crosspointe*



NOTE: APPLICATIONS AT THIS POINT ARE SUBJECT TO THE FOLLOWING CONDITIONS:  
 1. THE CONTRACTOR SHALL BE RESPONSIBLE FOR OBTAINING ALL NECESSARY PERMITS AND APPROVALS FROM THE LOCAL AUTHORITIES.  
 2. THE CONTRACTOR SHALL BE RESPONSIBLE FOR THE PROTECTION OF ALL EXISTING UTILITIES AND STRUCTURES.  
 3. THE CONTRACTOR SHALL BE RESPONSIBLE FOR THE PROTECTION OF ALL ADJACENT PROPERTIES.  
 4. THE CONTRACTOR SHALL BE RESPONSIBLE FOR THE PROTECTION OF ALL PUBLIC UTILITIES AND STRUCTURES.  
 5. THE CONTRACTOR SHALL BE RESPONSIBLE FOR THE PROTECTION OF ALL ADJACENT PROPERTIES.  
 6. THE CONTRACTOR SHALL BE RESPONSIBLE FOR THE PROTECTION OF ALL PUBLIC UTILITIES AND STRUCTURES.

SUNSCREEN GUIDELINE CP5

# Crosspointe

## APPROVED EXTERIOR LIGHT FIXTURES



### BEL AIR LIGHTING®

CAST ALUMINUM ACRYLIC DIFFUSER  
OUTDOOR LANTERN



- WILL NOT RUST, FADE OR CORRODE
- EASY INSTALLATION
- POWDER COATED FINISHED

- HEIGHT: 8 1/2"
- WIDTH: 7 3/4"
- EXTENSION: 4 1/2"
- USE ONE MEDIUM BASE BULB (800W MAXIMUM, NOT INCLUDED)

MODEL NO : 54484  
FINISHED : WHITE



### Outdoor Wall Mount

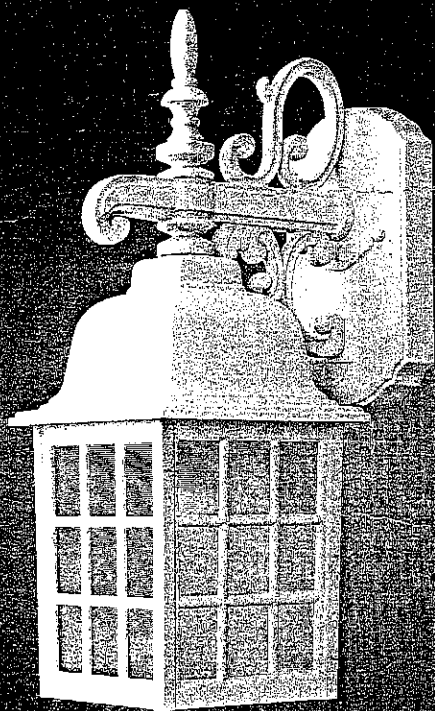
27500

Lámpara para  
paredes exteriores

• WEATHER RESISTANT CAST ALUMINUM  
ALUMINIO FUNDIDO E INTEMPERIZADO

• WHITE FINISH  
ACABADO BLANCO

• PRISMATIC GLASS  
VIDRIO PRISMÁTICO

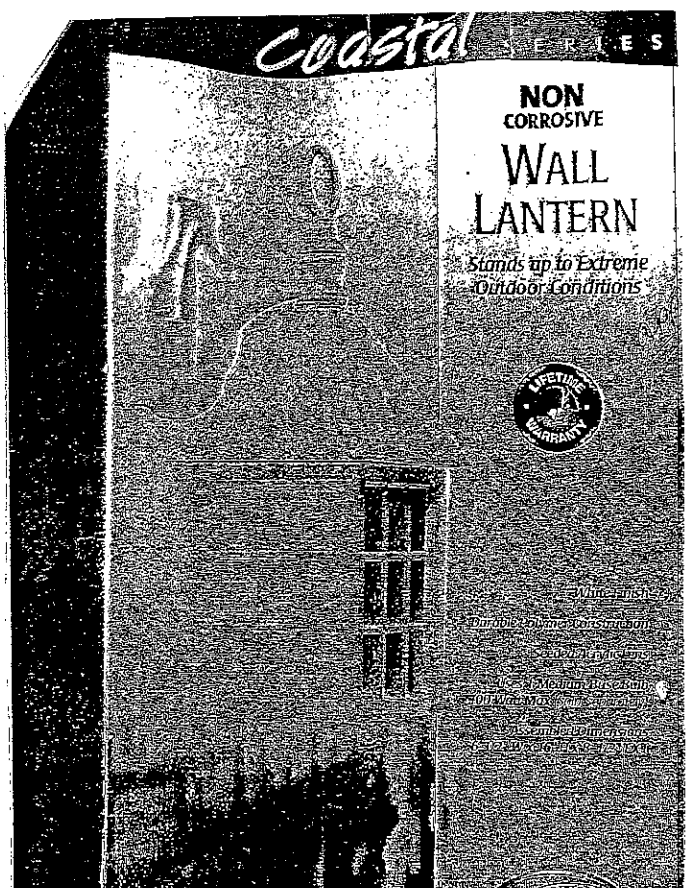


PORTFOLIO®

6 in. Wide X 15.75 in. High X 8.75 in. Extension  
15.24 cm. de ancho X 40 cm. de alto X 22.2 cm. de extensión

1 100-watt Medium Base Bulb Maximum (not included)  
1 Bombilla de base mediana, de 100 vatios máximo (no está incluido)

FRAGILE  
CLASIFICADO ENCLASIFICADO



Coastal SERIES

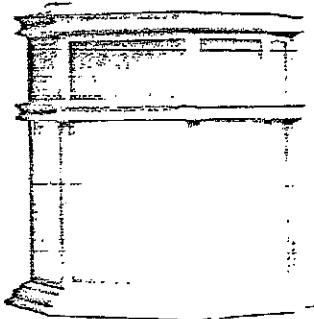
NON  
CORROSIVE  
WALL  
LANTERN

Stands up to Extreme  
Outdoor Conditions





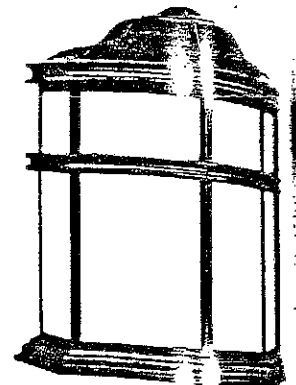
# Skyler Collection



945-05

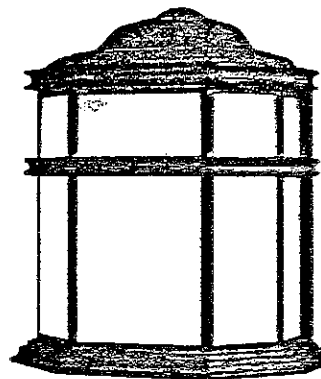
1-60W (M)  
9 3/4" H x 8 1/2" W x 4 1/2" Ext.

\$29.70



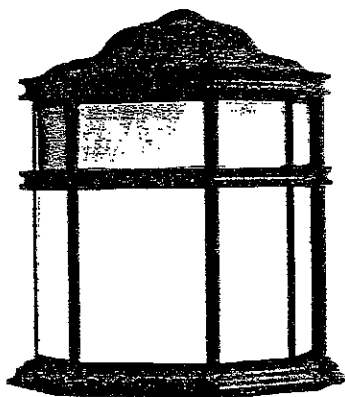
945-20

1-60W (M)  
9 3/4" H x 8 1/2" W x 4 1/2" Ext.



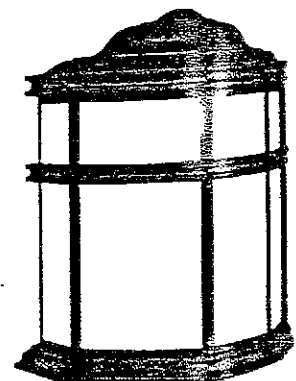
945-11

1-60W (M)  
9 3/4" H x 8 1/2" W x 4 1/2" Ext.



945-22

1-60W (M)  
9 3/4" H x 8 1/2" W x 4 1/2" Ext.



945-50

1-60W (M)  
9 3/4" H x 8 1/2" W x 4 1/2" Ext.

*Frosted Acrylic*