

01. Double-Tuck End Box



<Bottom>

Applicable industries

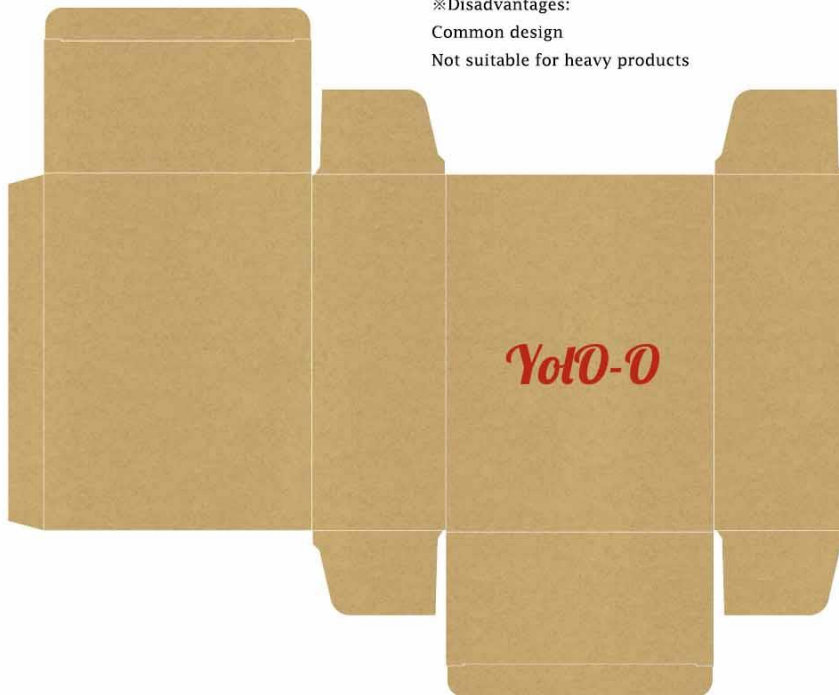
- Cosmetics
- Medicine
- Toothpaste
- Other lightweight products

※Advantages:

Economic
Simple manufacturing

※Disadvantages:

Common design
Not suitable for heavy products





02. Snap-Lock Box

Applicable industries

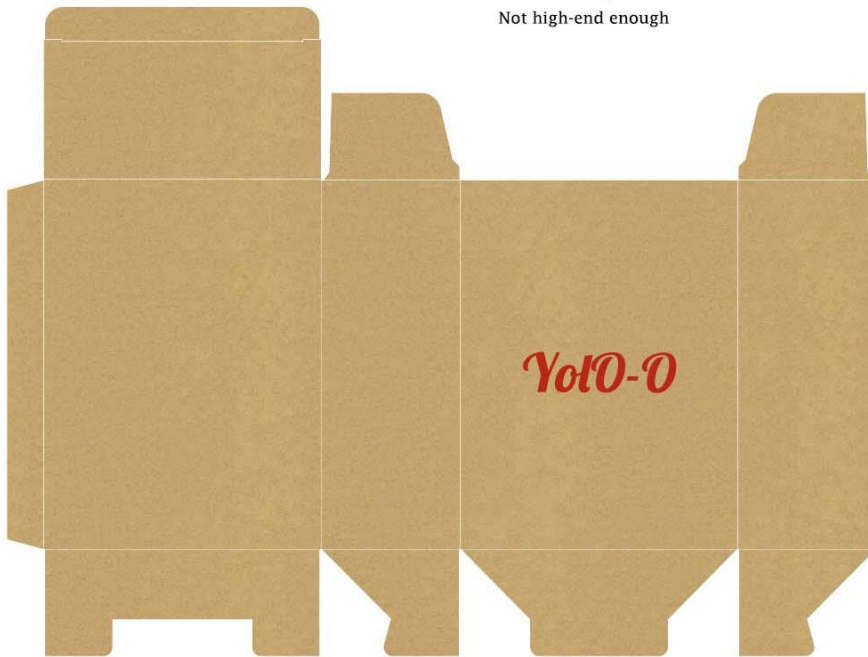
- Cosmetics
- Food with small packet, like candy, tea
- Small electronics products
- Small & medium-sized products

※Advantages:

Better load-bearing than double-tuck one

※Disadvantages:

Not high-end enough





03. Hanger Box

Applicable industries

- Digital & electronic accessories
- Stationery
- Retail products

※Advantages:

Hangable, space-saving
Easy to fold and assemble

※Disadvantages:

Security stickers needed to prevent theft





04. Window Box

Applicable industries

- Toys
- Candles & Soaps
- Electronics
- Other eye-catching products

※Advantages:

Attract consumers
Add fun and appeal to products

※Disadvantages:

Extra lamination to prevent moisture and dust





05. Carry-Out Box

Applicable industries

- Souvenirs
- Food for cakes or fruits

※Advantages:

Easy to carry
Strong load-bearing

※Disadvantages:

Higher cost than other paper box





06. Mailer box

Applicable industries

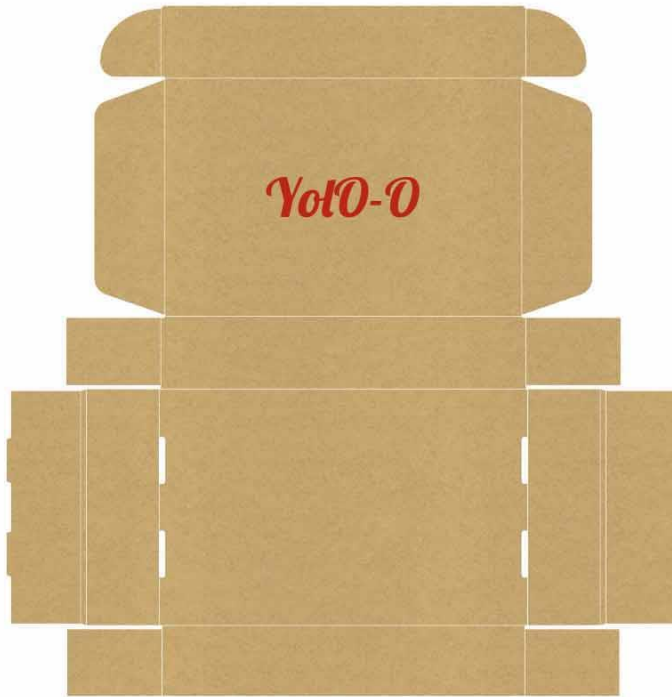
- E-commerce / shipping packaging
- Apparel & Clothing
- Jewelry & Accessories

※Advantages:

One-piece construction

Easy to fold & storage

Full color printing supported on inside and outside





07. Easy Tear Box

Applicable industries

- Blind box
- Cosmetics
- Electronics
- Other high-value products

※Advantages:

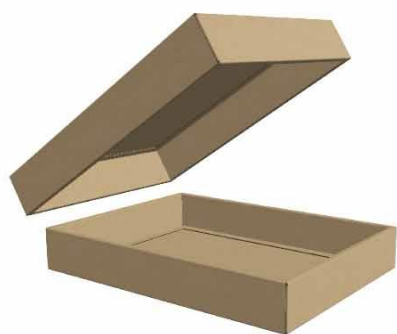
Anti-forging and anti-theft

※Disadvantages:

Single-use only

Higher cost than other paper box





08. Top and Bottom Box

Applicable industries

- Jewelry & accessories
- Apparel, footwear & headwear
- Electronic products
- Premium gifts

※Advantages:

Good protective
Quickly packed

※Disadvantages:

Big volume for higher shipping and storage cost





09. Paper bag

Applicable industries

- Souvenirs & gifts
- Apparel & footwear
- Cosmetics
- Retail products

※Advantages:

Reusable

Acts as a walking advertisement

※Disadvantages:

Not suitable for fragile products





10. Paper Tube

Applicable industries

- Poster
- Apparel & scarf
- Perfume & fragrance
- Cosmetics & Skincare

※Advantages:

Hard to bend or crush

Sealed tightly to keep products safe and dry

※Disadvantages:

Limited by product size and shape

