

MoleculesTM

ENTERPRISES

JOHN@MOLECULESWORLD.COM | +91 6362029237 | WWW.MOLECULESWORLD.COM

THE PRODUCT

A. Polo

- 1.PimaPolo (100% Cotton)
- 2.Jacquard Polo (Sustainable)
- 3.Jacquard Polo (Sustainable) (Women's)
- 4.Mars200 (Performance)
- 5.The Melange Edit (Premium Polyester)

B. Crew Necks

- 1.OversizedTee(100%Cotton)
- 2.Pima Crew Necks (100% Cotton) (Men's)
- 3.Pima Crew Necks (100% Cotton) (Women's)
- 4.3D Crew Necks (Sustainable)
- 5.Mobilitte (Performance)
- 6.Sports (Performance)

C. Shirt-Tee

D. Jet-Setter Jacket

E. Zippers

F. Classic Hoodies

G. Trousers

- 1.Flexi-WaistTrousers(65-35Blend)
- 2.Formal Trousers (100% Polyester)



Our Certifications



PIMA*

2X^{Bio} Wash
Gold finish

Jacquard
Collar & Cuffs

Slits +
Bar tech

Mayer & Cie
German tech Knit

HI Q+dyes
Long lasting colors

260 GSM
100% PIMA
Cotton



PANTONE
17-1464 TCX
Red Orange



White



Mint
Blue



Imperial
Blue



Teal
Blue



Mauve



Umbur



Olive
Green



Bottle
Green



Red



French
Wine



Midnight
Navy



Classic
Black

MRP: 1330/-



SUSTAINABLE POLOS

Jacquard
Collar & Cuffs

Slits +

Bar tech
Wood Textured
Button

Yarn Dyed
Diamond quality yarn

240 GSM

60% Recycled Cotton
40% Recycled Polyester

Certified by



White



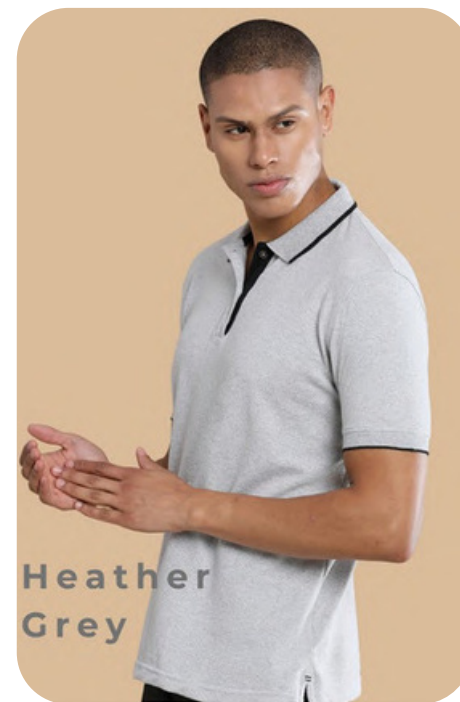
Sunrise
Yellow



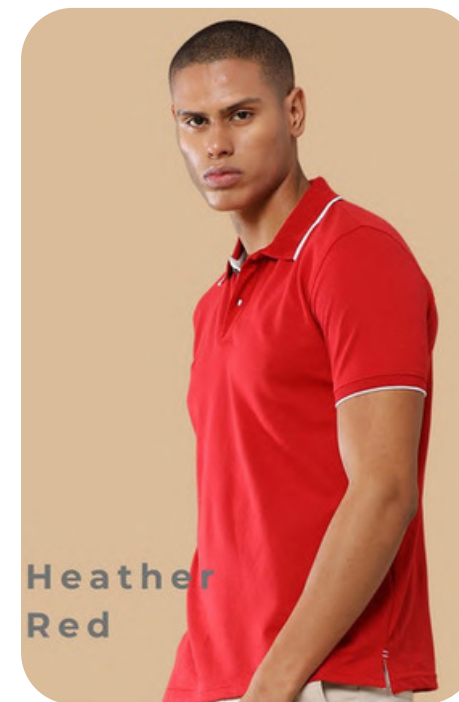
Aqua
Blue



Sand
Beige



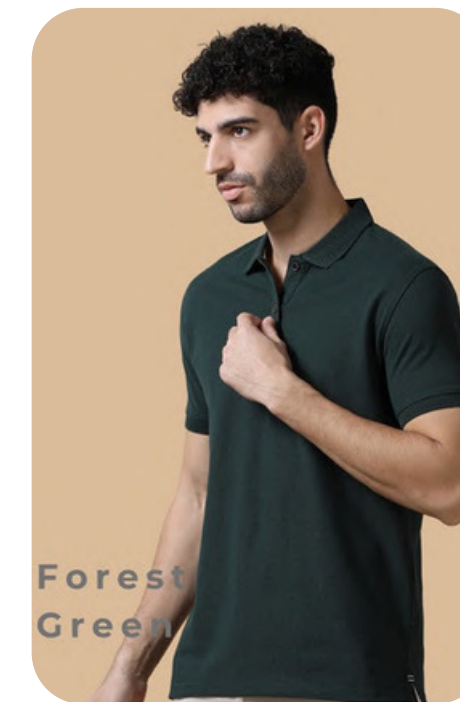
Heather
Grey



Heather
Red



Midnight
Navy



Forest
Green



Charcoal
Melange



Classic
Black/Red



Classic
Black

MRP: 1245/-



SUSTAINABLE POLOS

Jacquard
Collar & Cuffs

Slits +
Bar tech
Wood Textured
Button

Yarn Dyed
Diamond quality yarn

240 GSM
60% Recycled Cotton
35% Recycled Polyester
5% Lycra

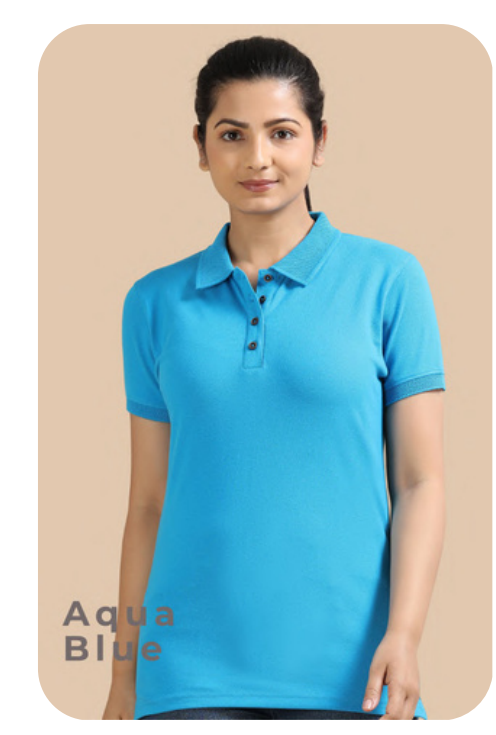
Created by



White



Sunrise
Yellow



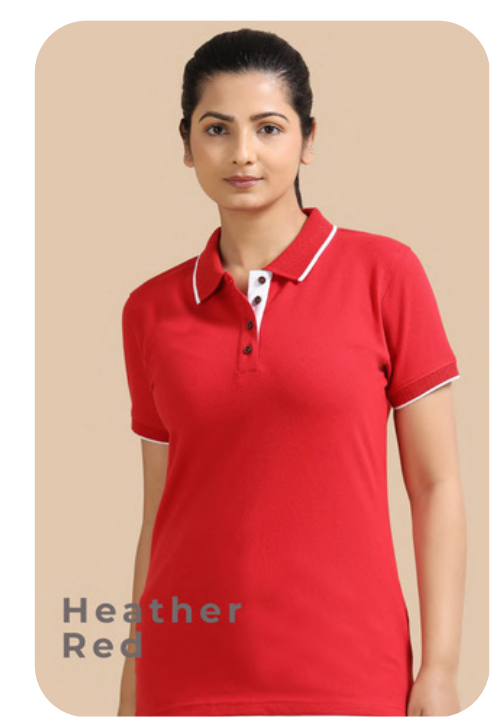
Aqua
Blue



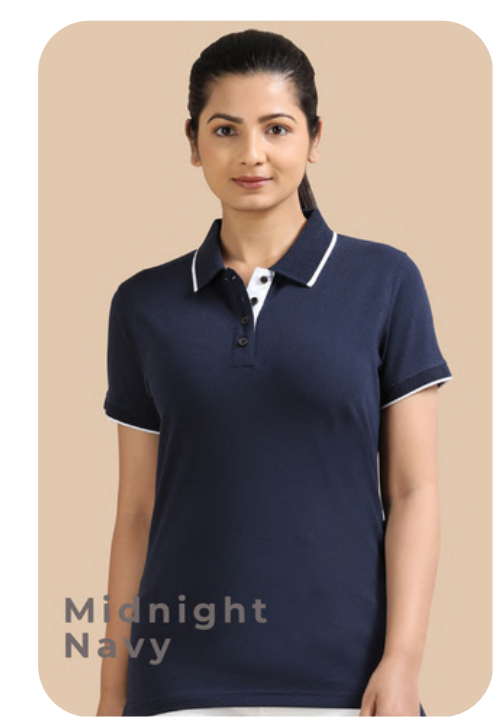
Sand
Beige



Heather
Grey



Heather
Red



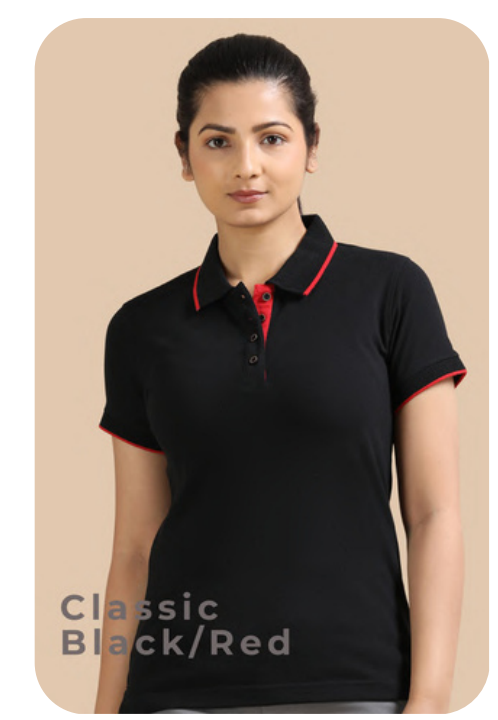
Midnight
Navy



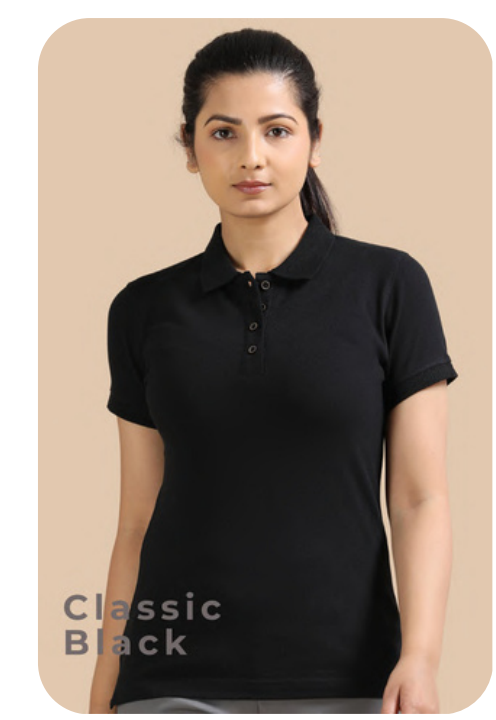
Forest
Green



Charcoal
Melange



Classic
Black/Red



Classic
Black

MRP: 1245/-



Performance
MAX
Technology

MARS 200TM
POLOS

Purple

OBT Ready OBT

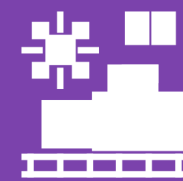
200 Day
warranty



Wrinkle free
effect



UV Protected
Fabric



Moisture
Management



Anti
Static



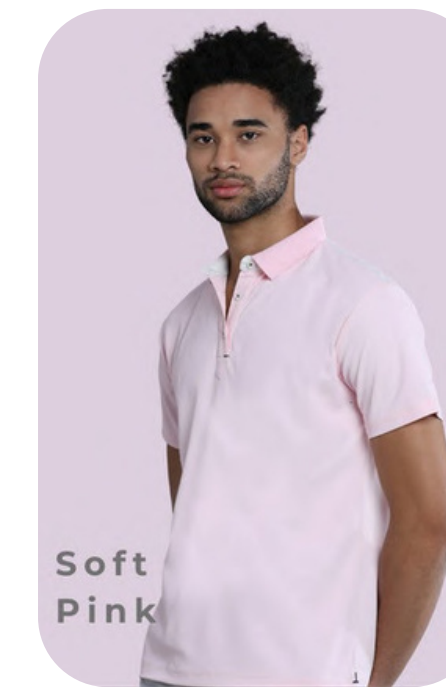
Polyester 200
GSM



Slate
Grey



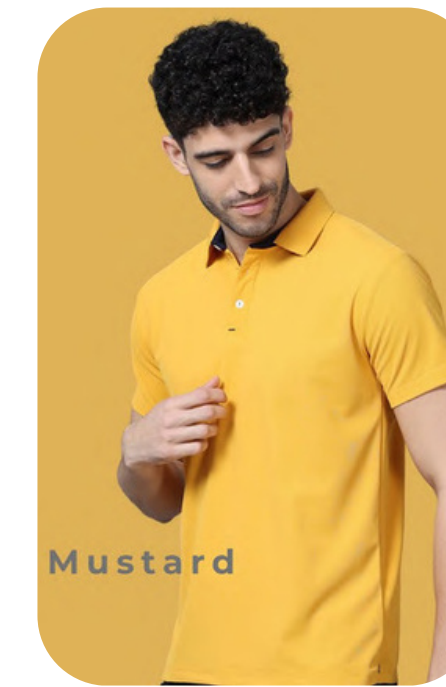
Sky
Mint



Soft
Pink



Lilac



Mustard



Orange



Olive
Green



Bottle
Green



Imperial
Blue



Teal
Blue



Midnight
Navy



Spark
Red



French
Wine



Classic
Black

MRP: 1210/-



the
MÉLANGE
edit

OBT Ready **OBT**

200 Day
warranty



Wrinkle free
effect



UV Protected
Fabric



Moisture
Management



Anti
Static



Polyester **200
GSM**



Pistachio



Onion

MRP: 1225/-

OVERSIZED

ORIGINALS

2X^{Bio} Wash
Gold finish

French Terry
Detailed Hemline

Mayer & Cie
German tech Knit

HI Q+dyes
Long lasting colors

240 GSM
100% PIMA
Cotton



Lilac Grey



Rust



Petrol



Off-White



Black

Size	Chest	Size Guide	
		Body length	Sleeve length
2XS	38	26	7
XS	40	27	8
S	42	28	8
M	44	29	9
L	46	30	9
XL	48	31	10
2XL	50	32	10

+/- 1 inch tolerance shall be acceptable
these are garments measurements.

MRP: 1275/-



PIMA*

Crew Necks

2X Bio Wash
Gold finish

Mayer & Cie
German tech Knit

HI Q+dyes
Long lasting colors

185 GSM
100%
PIMA
Cotton



White



Yellow



Red



Maroon



Mint



Imperial Blue



Midnight Navy



Petrol



Bottle Green



Classic Black

MRP: 1175/-



PIMA* Crew Necks

2X Bio Wash
Gold finish

Mayer & Cie
German tech Knit

HI Q+dyes
Long lasting colors

185 GSM
100%
PIMA
Cotton



White



Yellow



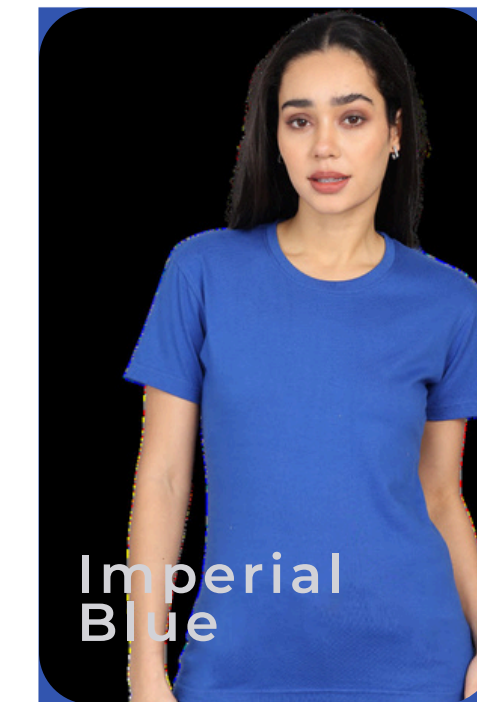
Red



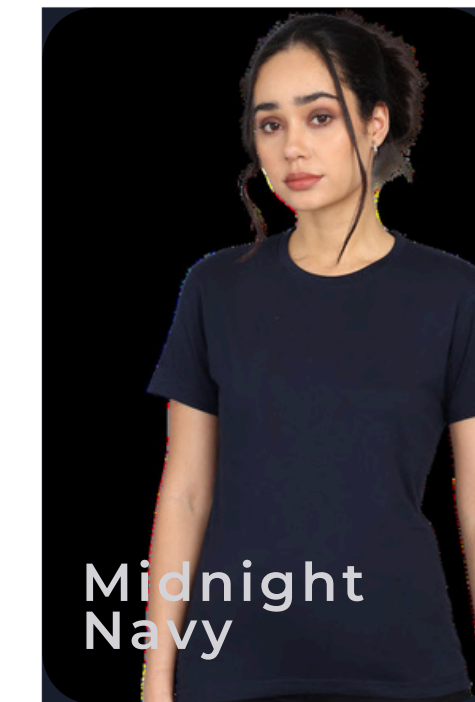
Maroon



Mint



Imperial
Blue



Midnight
Navy



Petrol



Bottle
Green



Classic
Black

MRP: 1175/-



SUSTAINABLE

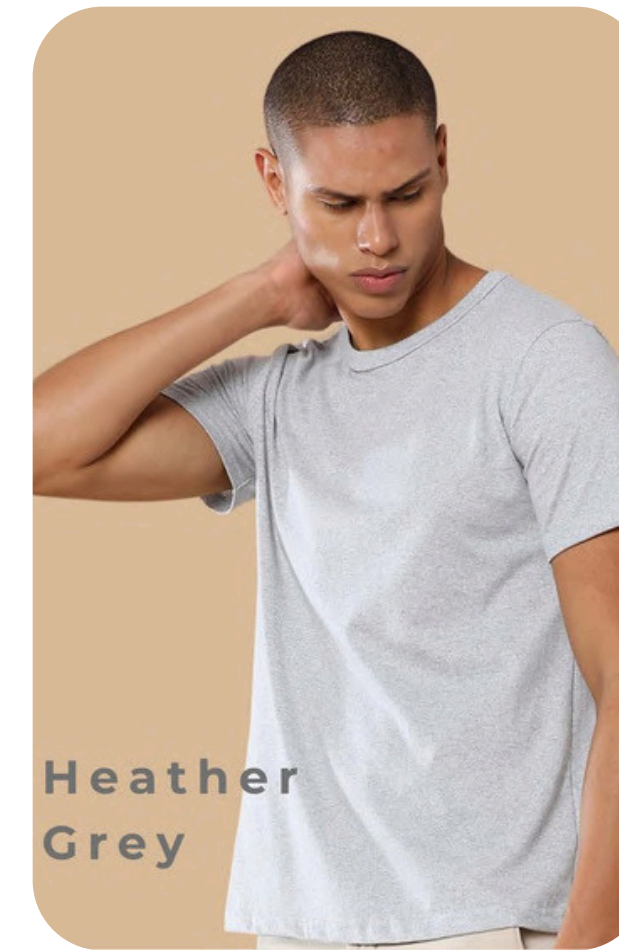
3D Crew Necks

Yarn Dyed
Diamond quality yarn

190 GSM
80% Recycled Cotton
20% Recycled Polyester



White



Heather Grey



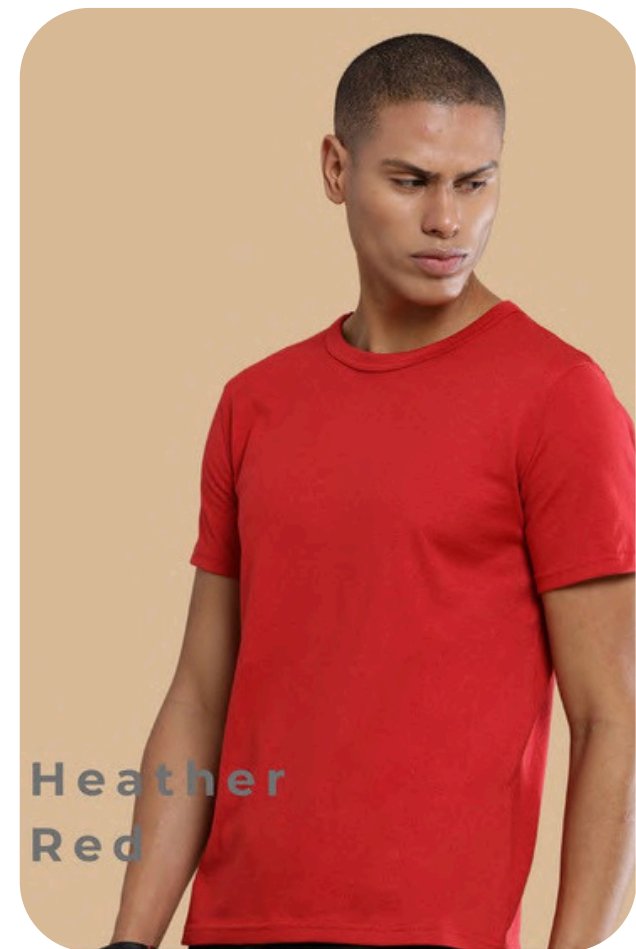
Charcoal Melange



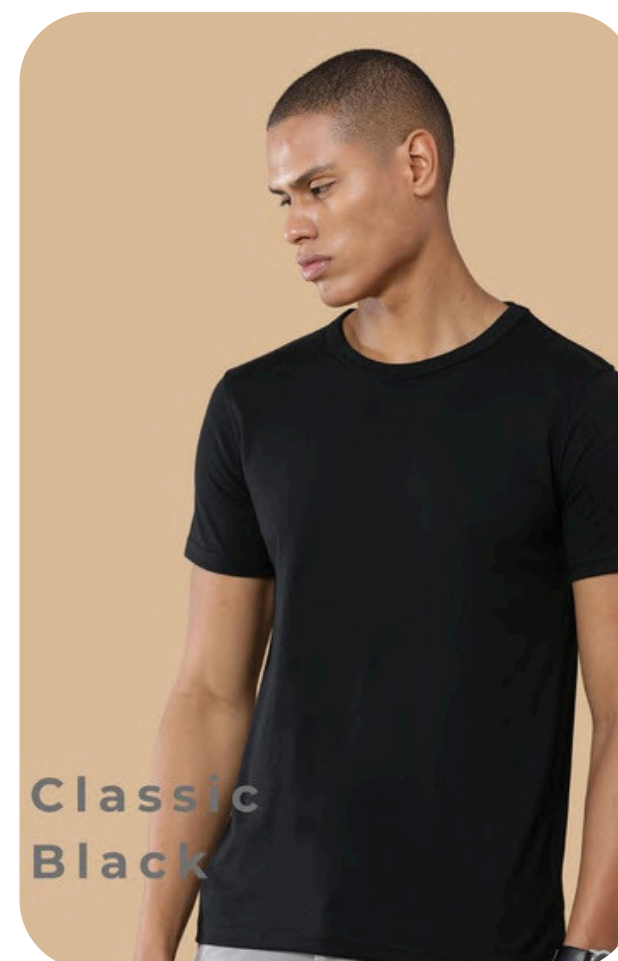
Heather Blue



Midnight Navy



Heather Red



Classic Black



MRP: 1125/-

Performance
MAX
Technology

Mobilitee™
Crew Necks

Mint Blue

OBT Ready

200 Day
warranty

Wrinkle
free
effect

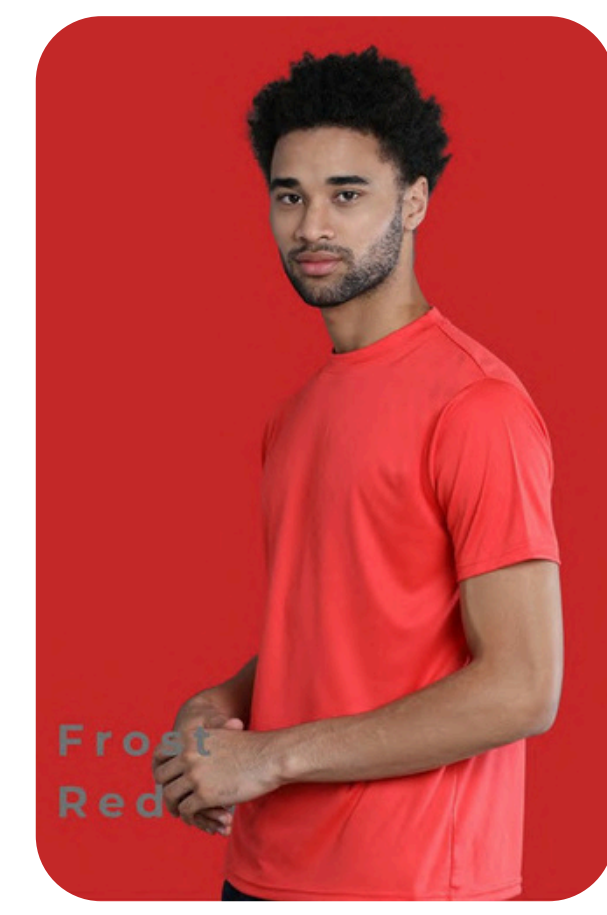
Moisture
Management

Polyester

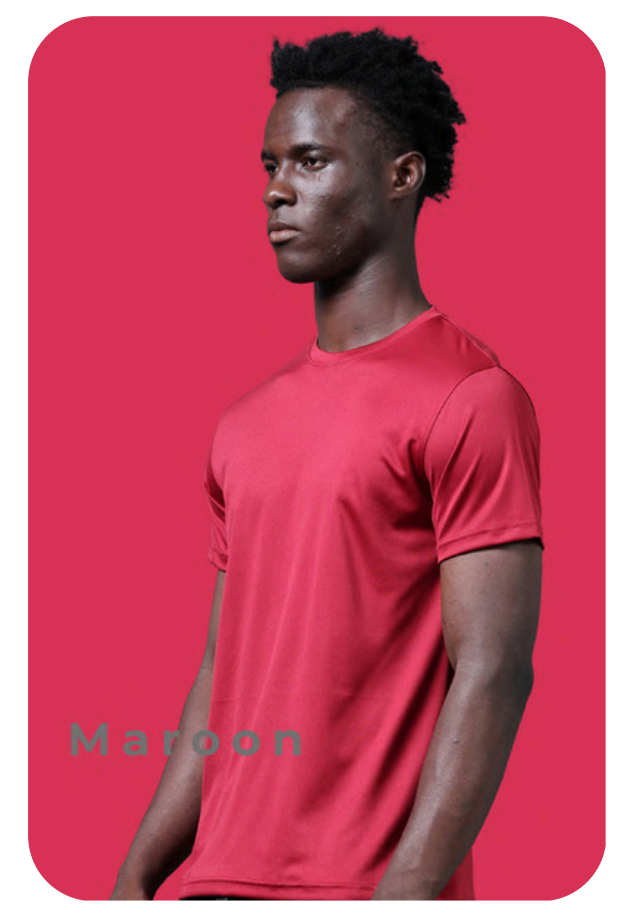
OBT



160
GSM



Frost
Red



Maroon



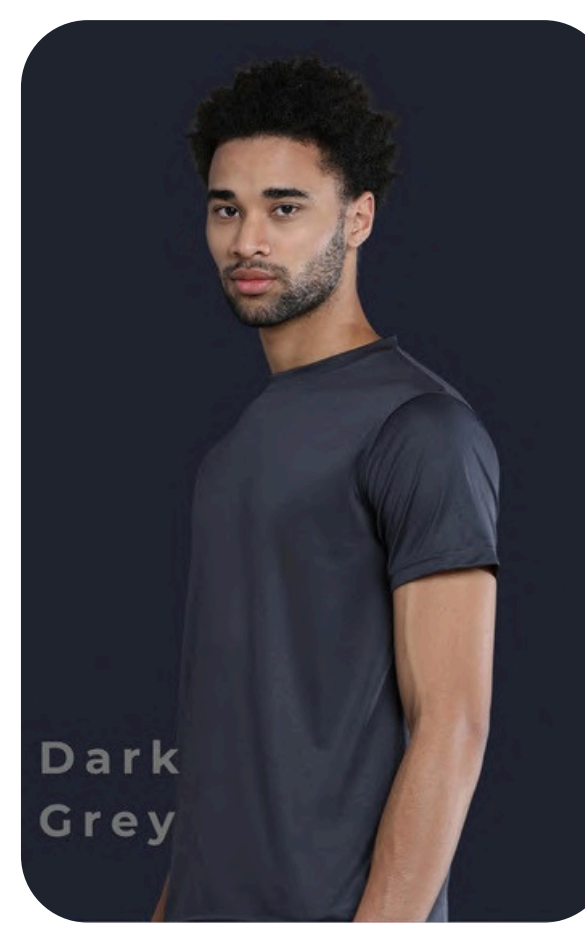
Mustard



Orange



Imperial
Blue



Dark
Grey



Midnight
Navy





Classic
Black

MRP: 685/-

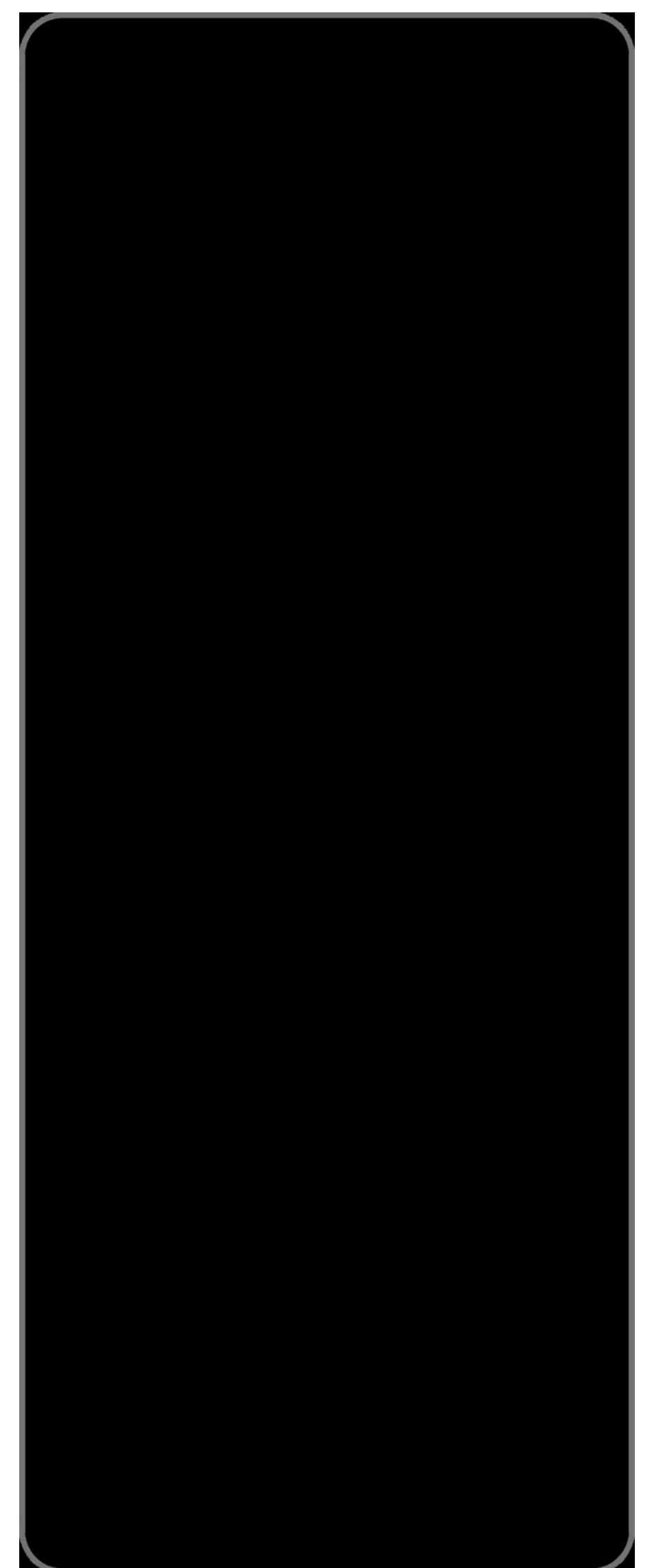


Sports Crew

- Back reflectives 
- OBT Ready OBT
- Wrinkle free effect 
- Polyester 120 GSM

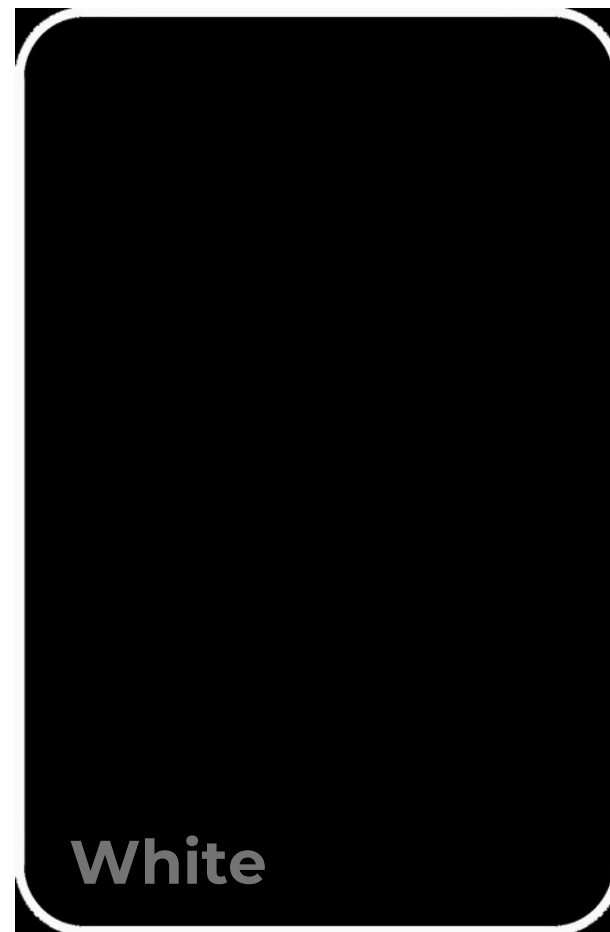


Yellow



MRP: 459/-

6X SMARTER
WORKDAY SHIRT



MRP: 1425/-



Jet-Setter Jacket



Grey



Olive Green



Teal Blue



Navy Blue



Black

Size Guide			
Size	Chest	Body Length	Sleeve Length
XS	38	25	28.5
S	40	26	29.5
M	42	27	30.5
L	44	28	31.5
XL	46	29	32.5
2XL	48	30	33.5
3XL	50	31	34.5
5XL	54	33	36.5

+/- 1 inch tolerance shall be acceptable these are garment measurements.

MRP: 1550/-



SUSTAINABLE

2 in 1 Zipper

Yarn Dyed
Diamond quality yarn

300 GSM
80% Recycled Cotton
20% Recycled Polyester

Certified by



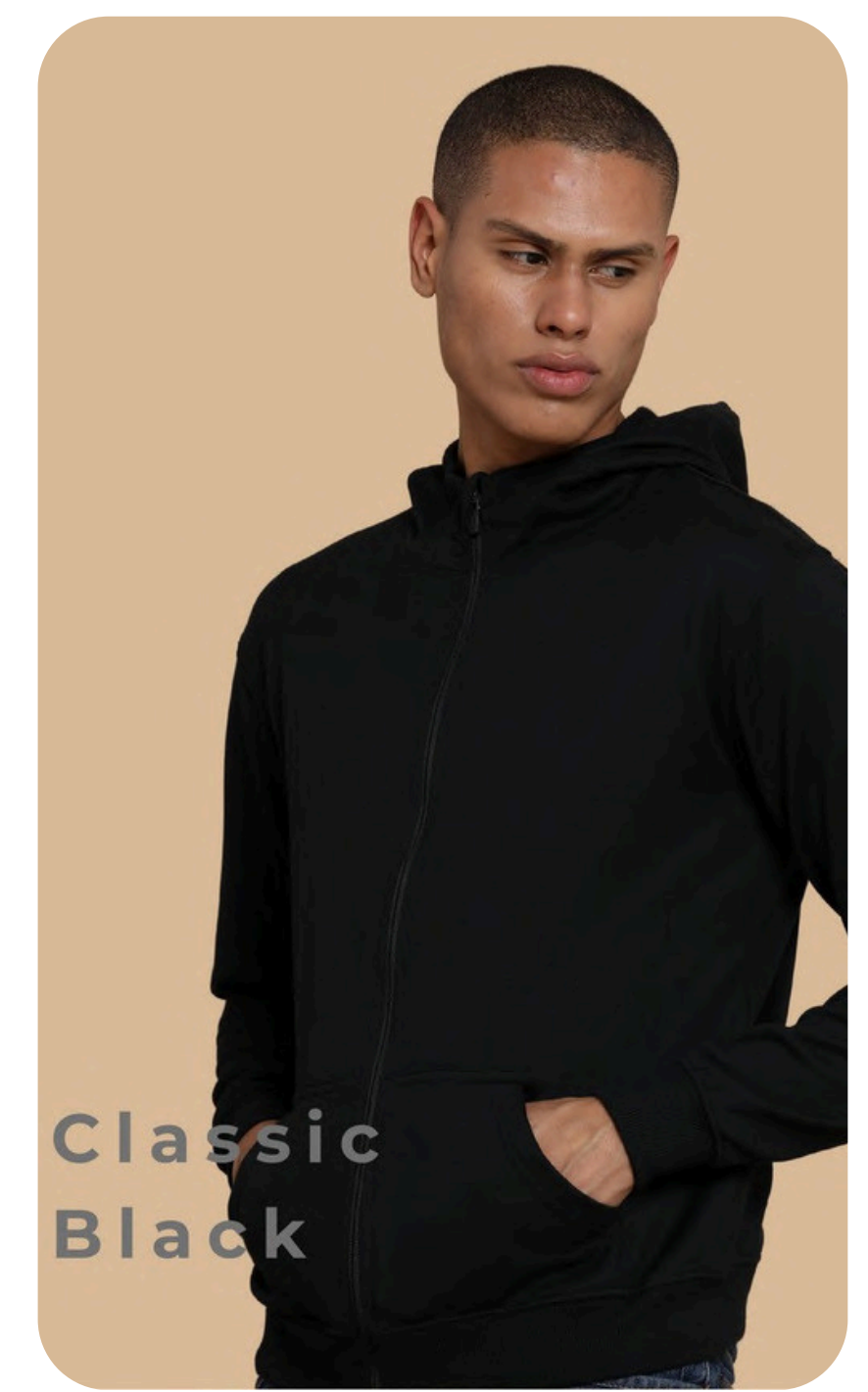
Heather Grey



Olive Green



Midnight Navy



Classic Black

MRP: 1400/-



SUSTAINABLE H o o d i e

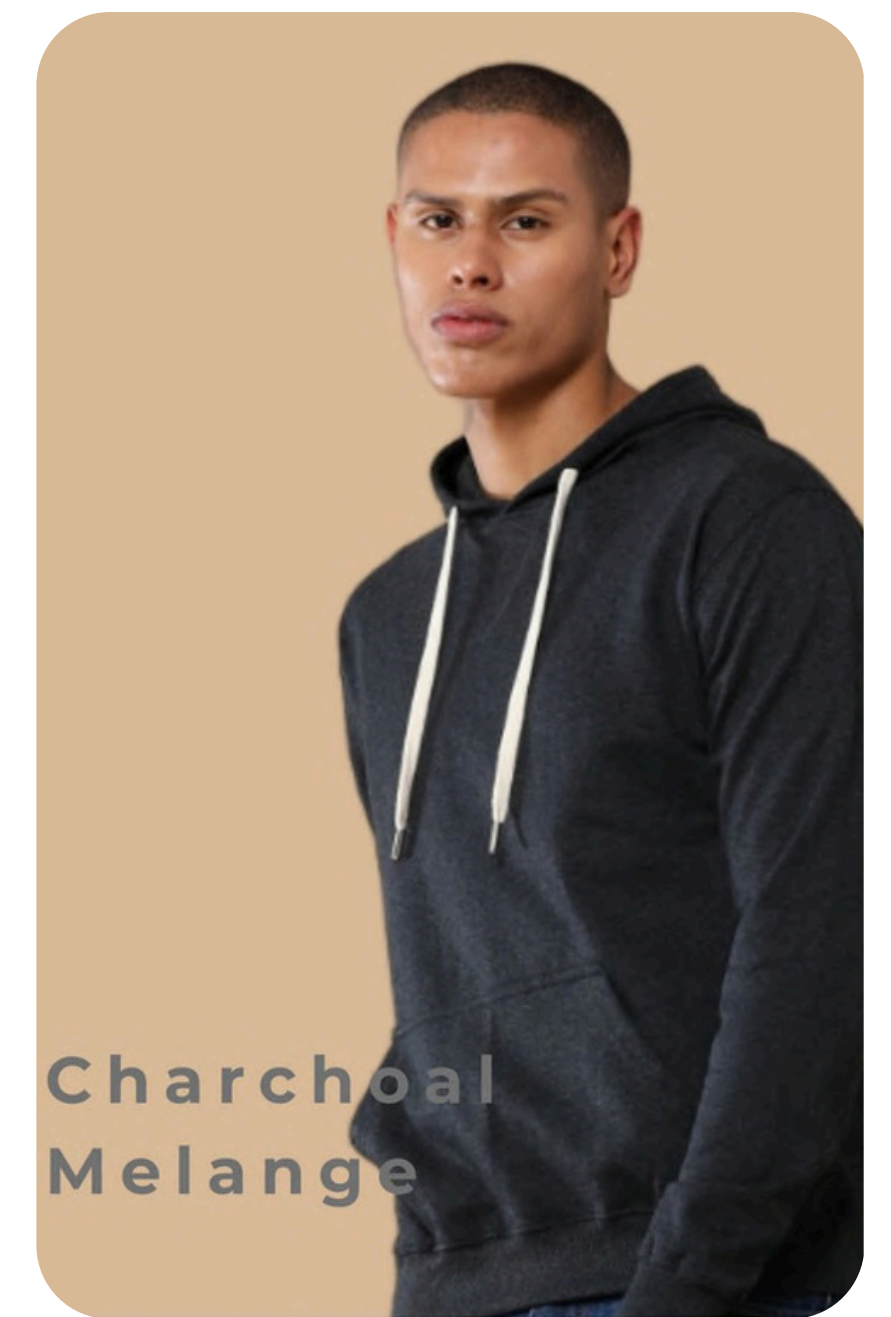
Yarn Dyed
Diamond quality yarn

300 GSM
80% Recycled Cotton
20% Recycled Polyester

certified by



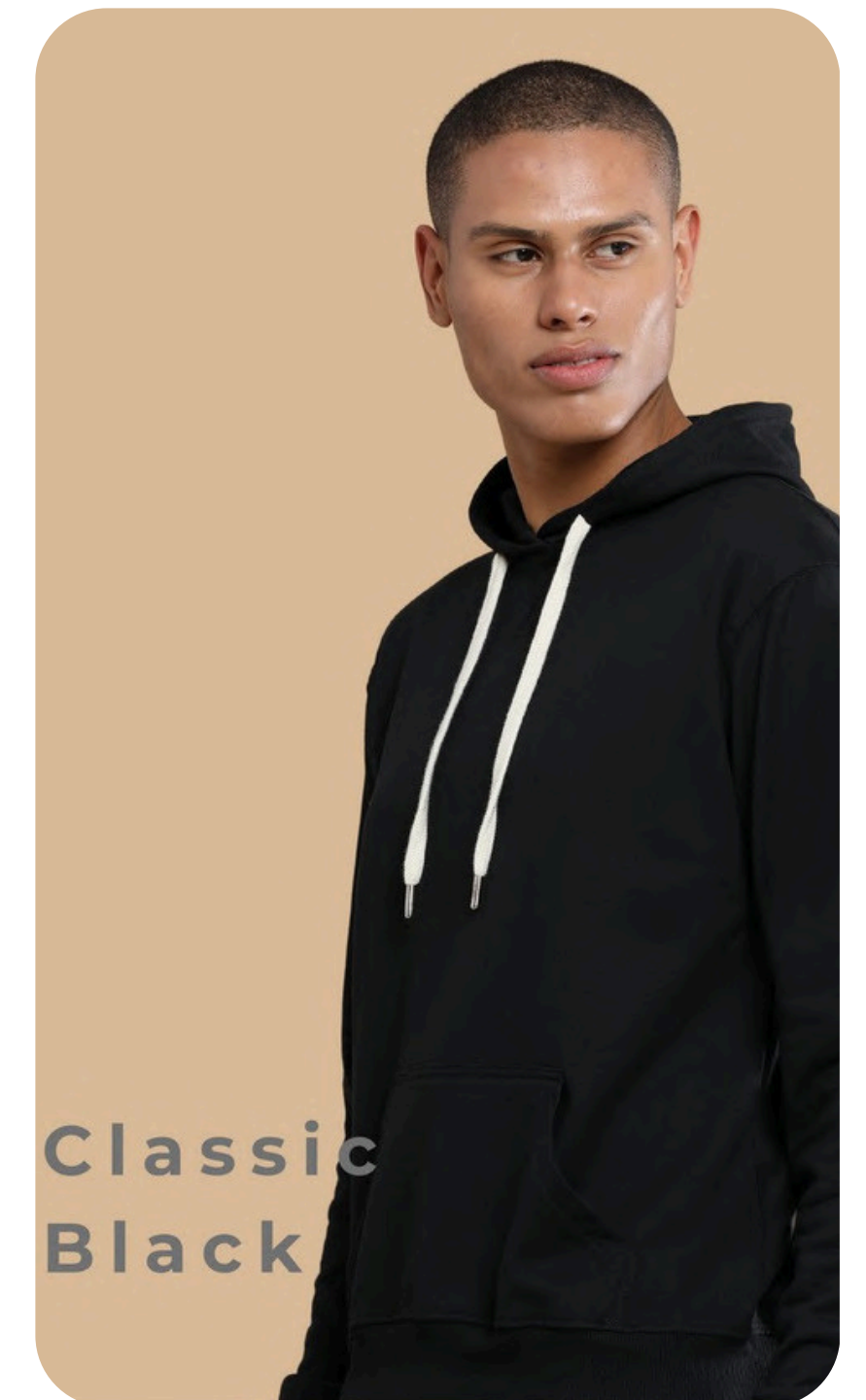
French
Wine



Charcoal
Melange



Midnight
Navy



Classic
Black

MRP: 1365/-



FLEXI-WAIST

T r o u s e r s



FLEXI-WAIST
Raymond Navy



FLEXI-WAIST
Black

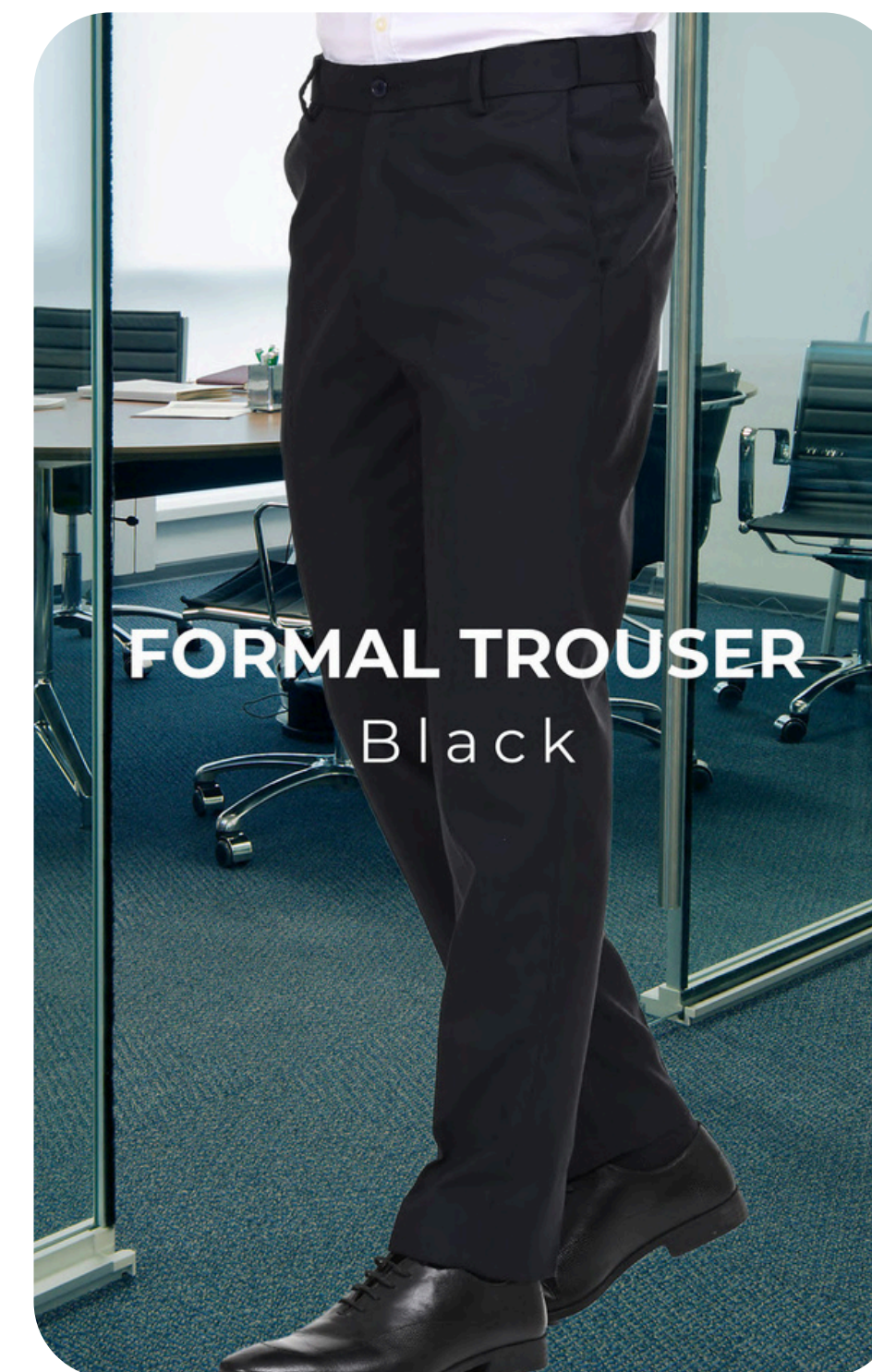
<u>Size Guide</u>		
Waist	Length	Thigh
30	41	22
32	41	23
34	41	24
36	41	25
38	41	26
40	41	27

+/- 1 inch tolerance shall be acceptable
these are garments measurements.

MRP: 1450/-



FORMAL TROUSER



Size Guide

Waist	Length	Thigh
30	41	22
32	41	23
34	41	24
36	41	25
38	41	26
40	41	27

+/- 1 inch tolerance shall be acceptable
these are garments measurements.

MRP: 1305/-

Size Chart

T-Shirts

<u>Size Guide</u>			
Size	Chest	BodyLength	Sleeve Length
XS	36	25	6.1/2
S	38	26	7
M	40	27	7.1/2
L	42	28	8
XL	44	29	8.1/2
2XL	46	29.1/2	9
3XL	48	30	9.1/2
5XL	52	31	10

Zipppers& Hoodies

<u>Size Guide</u>			
Size	Chest	BodyLength	Sleeve Length
XS	38	25	23
S	40.1/2	25.1/2	24
M	43	26	25
L	45	27.1/2	26
XL	46.1/2	28.1/2	27
2XL	49	29.1/2	28
3XL	51	30	29
5XL	54.1/2	31	29

+/- 1 inch tolerance shall be acceptable
these are garment measurements.



SAMPLE Kit.