

YXON
INTERNATIONAL

DOMINATE THE EDGE

WHITE PAPER 1.0

A nighttime aerial view of the Hong Kong skyline. The image is dominated by numerous illuminated skyscrapers, including the Bank of China Tower with its distinctive lattice structure, the HSBC building with its red and white facade, and the International Finance Centre. The lights from the buildings reflect on the water in the foreground. In the lower-left, the Hong Kong Ferris wheel is visible, illuminated in blue. The overall scene is a vibrant display of urban architecture and engineering.

20 YEAR +
FROM EXPERIENCE TO PRECISION

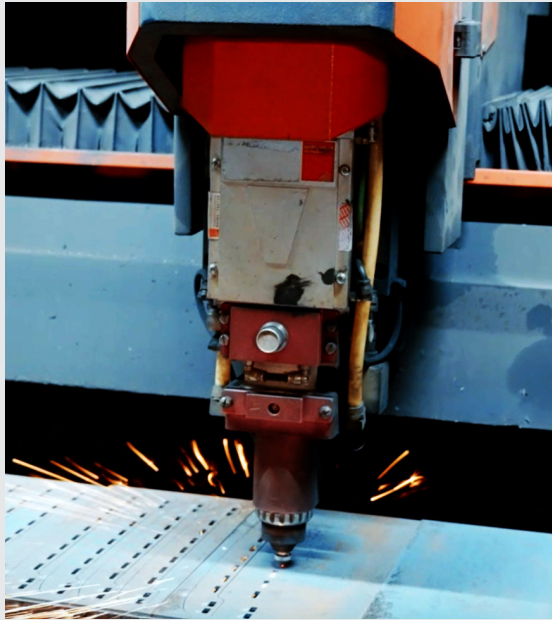
"ENGINEERING THE EDGE BEHIND THE LABEL"



WHY CHOOSE YXON



-196°C
LIQUID
NITROGEN
CRYOGENIC



6
CNC
MACHINES



INTERNAL
QC
LABORATORY

High Output & Rapid Response

Monthly
Capacity

20000prs+

R&D
Efficiency

48H Rapid Prototyping

YXON 🤝 **MATERIAL LAB**



MATERIAL EXCELLENCE

YXON Material	Sandvik Grade	Hardness (HRC)	Characteristics & Applications
3Cr13	12C27M (Mod)	51–55	Entry-level: excellent toughness and corrosion resistance; ideal for beginners
STAR PRODUCT 3Cr (Nitrogen)	14C28N	53–57	New development: Balanced extreme hardness with top-tier toughness; superior rust resistance
5Cr15MoV	12C27	52–56	Balanced performance; ultra-fine grain; maintains a very smooth edge after sharpening
6Cr13 / 7Cr	13C26	53–57	High-hardness design; provides an ultimate "bite" and cutting feel
9Cr18MoV	19C27	54–58	Elite wear resistance; benchmarks against 440C; designed for heavy professional use

THE GALLERY

Hockey Series



- Standard Runner: Standardized designs compatible with mainstream holders.
- Quick-Release Runner: Engineered for professional competition requiring high-frequency blade swaps.
- Variable Thickness Runner: Multiple thickness options to balance grip and glide speed.

Figure Skating Series



- Classic Mirror Blade: Traditional all-steel structure with a high-polish mirror finish.
- Lightweight Series: Composite blades featuring Aluminum or premium Carbon Fiber holders to significantly reduce jump weight.

SURFACE TREATMENT

■ SURFACE FINISHING



Satin



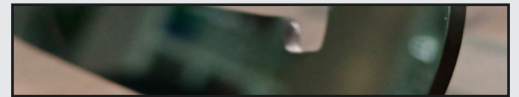
Mirror



**Ultra-High Polish
(nanoscale)**



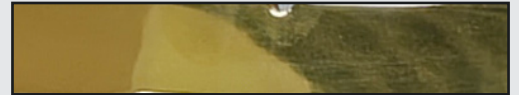
Ultra-High Polish +DLC



■ COATING



Titanium



Matte Black



**DLC
(Diamond-Like Carbon)**



THE ASSURANCE

SGS



COMPLIANCE

QUALITY ASSURANCE (AQL)

Committed to a mass production defect rate
of **< 0.5%**

Any products exceeding tolerance limits or showing
uneven hardness are subject to a
1:1 zero-cost replacement

YXON
INTERNATIONAL

CONTACTS

Email: ryan@yxon-blades.com

W e b : www.yxon-blades.com

Social: www.linkedin.com/in/yxon-international

www.tiktok.com/@yxon_international

www.instagram.com/yxon.international/

www.facebook.com/profile.php?id=61579552557303

www.youtube.com/@YXON-INTERNATIONAL