

# Your Trusted Source for Industrial Lifting, Packaging & Cargo Solutions



**GSTIN : 27GWKPS6388M1Z8**

**📍 SH 28 B, Rolex Shopping Centre, Station Road, Near Prashant Hotel,  
Goregaon West, Mumbai -400062**

**📞 Sales : +91 9137819890**

**🌐 [www.classicsupplyco.in](http://www.classicsupplyco.in)**



# OUR PRODUCTS

## POLYESTER SLINGS



### Webbing Slings (Up to 60 Ton Capacity)

Manufactured as per EN 1492-1, IS 15041 & ASME B30.9, our slings are made from **high tenacity polyester** and **color-coded** for easy identification.

#### Types:

Simplex | Duplex | Triplex | Multiply (up to 10 layers) | Endless

#### Features:

- Lightweight & flexible
- High strength & durability
- Abrasion & moisture resistant
- Reinforced eye loops / metal fittings

#### Applications:

Ideal for **industrial, marine & heavy lifting**, especially for **pipes & large equipment**

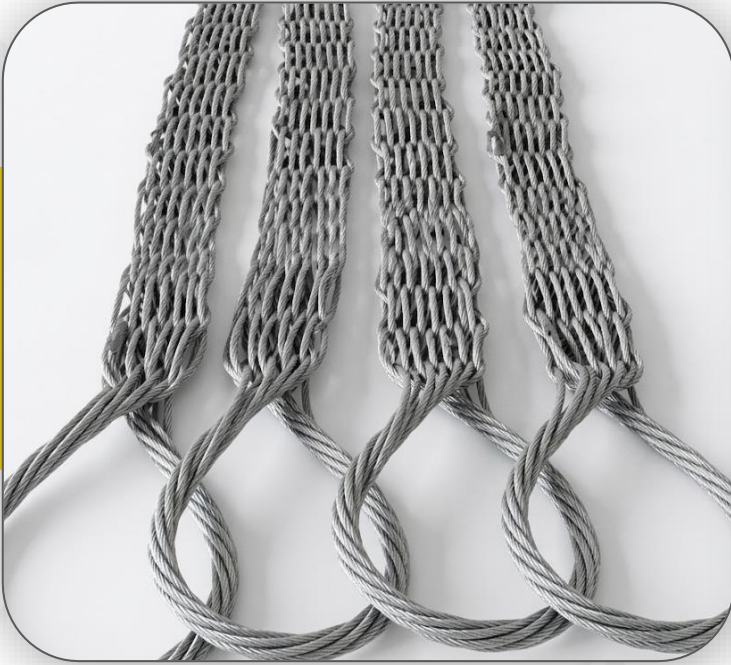
### Working Load Limit with 1 Webbing Sling

### With 2 Webbing Slings

COLOUR	WLL (KGS)	WIDTH (MM)	Working Load Limit with 1 Webbing Sling					With 2 Webbing Slings				
			Straight Lift	Choked Lift	$\beta$				Straight Lift	Choked Lift	Straight Lift	Choked Lift
					0°-7°	7°-45°	45°-60°	90°				
			M=1	M=0.8	M=2	M=1.4	M=1	M=1.4	M=1.4	M=1.12	M=1	M=0.8
VIOLET	1000	25	1000	800	2000	1400	1000	1400	1400	1120	1000	800
GREEN	2000	50	2000	1600	4000	2800	2000	2800	2800	2240	2000	1600
YELLOW	3000	75	3000	2400	6000	4200	3000	4200	4200	3360	3000	2400
GREY	4000	100	4000	3200	8000	5600	4000	5600	5600	4480	4000	3200
RED	5000	125	5000	4000	10000	7000	5000	7000	7000	5600	5000	4000
BROWN	6000	150	6000	4800	12000	8400	6000	8400	8400	6720	6000	4800
BLUE	8000	200	8000	6400	16000	11200	8000	11200	11200	8960	8000	6400
ORANGE	10000	250	10000	8000	20000	14000	10000	14000	14000	11200	10000	8000
ORANGE	12000	300	12000	9600	24000	16800	12000	16800	16800	13440	12000	9600

Webbing Slings

# WIRE ROPE SLINGS



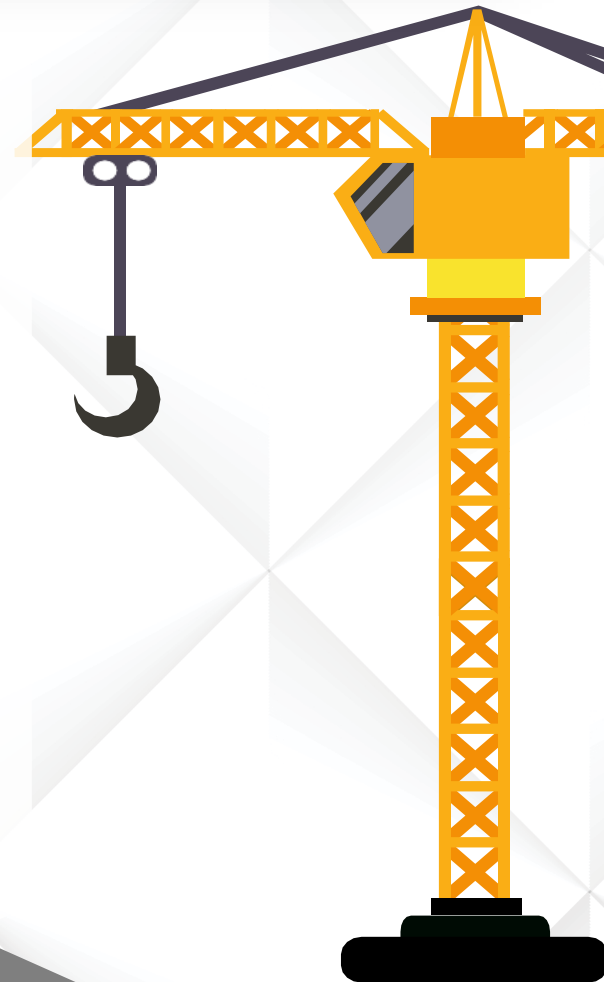
Braided wire rope slings are designed for safe and efficient lifting applications, offering high strength, flexibility, and durability. Manufactured from high-quality steel wire, they provide excellent load-bearing capacity and resistance to wear.

**Size Range:** 6mm to 38mm

**Features:**

- High tensile strength
- Flexible and easy to handle
- Durable and wear-resistant
- Suitable for heavy-duty lifting applications

**Available in various lengths and configurations.**



# Cargo Lashing Belts (Ratchet Tie-Downs)



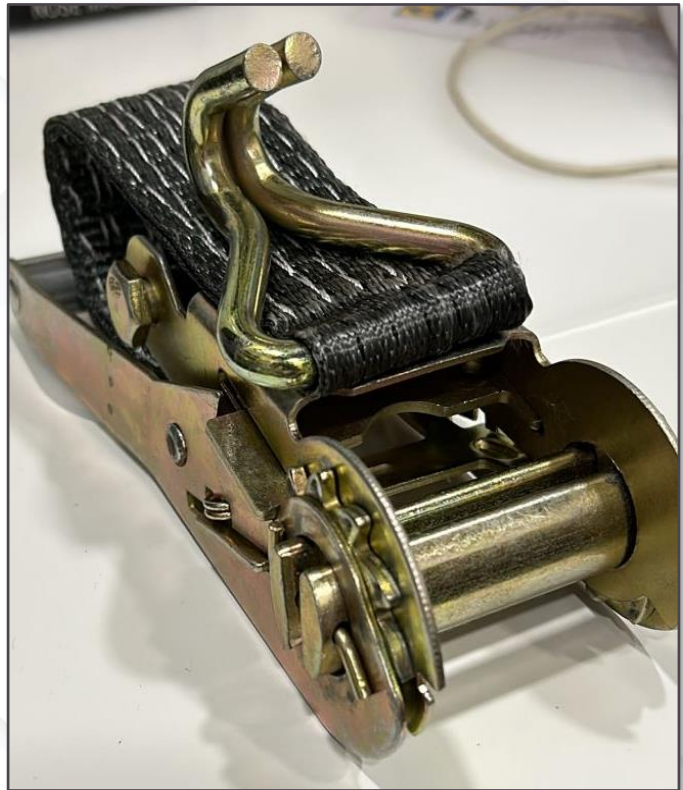
Cargo lashing belts are designed to securely fasten and stabilize goods during transportation, preventing movement and damage. Manufactured from high-grade polyester webbing, these belts offer high strength, durability, and resistance to abrasion and weather conditions. Available in both **One Way Lashing** (single-use, cost-effective) and **Two Part Lashing** (reusable with ratchet mechanism) to suit various shipping and logistics needs.

## Product Range:

- **50mm Orange** – 3 Ton Capacity
- **50mm Green** – 5 Ton Capacity
- **75mm Yellow** – 10 Ton Capacity

## Key Features:

- High tensile strength
- Easy to use and reliable locking system
- Lightweight and durable
- Suitable for trucks, containers, and rail transport



# OTHER LOOSE Fittings



**Bow Shackle Pin Type**

Capacity: 2T|3.25T|4.75T|6.5T...



**Alloy Chain Slings**

Capacity: As per Customized



**Wire Rope**

Capacity: 1ton -20ton



**Wire Rope Clamps**

2mm to 30mm



**Braided Wire Rope Slings**

Capacity: As per Customized



**D Shackles are high-grade forged steel connectors.**

Available in all size



## CORD Strap/Composite Strap/Polyester Cord Strap

Cord Strap Size: 16mm, 19mm, 25mm and 32mm



## Dunnage Air Bag/Packaging Air Bag

Dunnage air bags are used to secure and stabilize cargo in containers, trucks, rail cars, and ships. They prevent load shifting in transit and offer a safer, more efficient alternative to traditional wood blocking and bracing.

Available in **PP Woven** and **Kraft Paper** variants, suitable for different load requirements.

### **Standard Sizes (mm):**

- 900 × 900
- 900 × 1200
- 900 × 1500
- 900 × 1800
- 900 × 2100
- 900 × 2200



# CLASSIC

## PRODUCTS & SUPPLY CO.

**GSTIN : 27GWKPS6388M1Z8**

**📍 SH 28 B, Rolex Shopping Centre, Station Road, Near Prashant Hotel, Goregaon West, Mumbai –400062**

**📞 Sales : +91 9137819890 🌐 [www.classicsupplyco.in](http://www.classicsupplyco.in)**

