

Z-GEM 5

5 Part Automated Hematology Analyzer

SPECIFICATIONS

Principles Flow cytometry(FCM)+Tri-anglescatter for 5-part differential analysis and WBC counting
Impedance method for RBC and PLT counting
Cyanide free colorimetry for HGB test

Parameters 23 reportable parameters:
WBC, Neu#, Lym#, Mon#, Eos#, Bas#, Neu%, Lym%, Mon%, Eos%, Bas%, RBC, HGB, HCT, MCV, MCH, MCHC, RDW-SD, RDW-CV, PLT, MPV, PDW, PCT
4 research parameters: ALY#, ALY%, LIC#, LIC%
3 histograms for WBC, RBC and PLT
Four 2D scattergrams for WBC differentiation

Throughput Up to 60 tests per hour

Display 10.4 inches high resolution TFT touch screen

Printout External printer,compatible with multiply laser / inkjet printers, compatible with various formats and user-defined formats

Storage Up to 50,000 records

Sample Volume 20µL

Linearity Range WBC: 0.00-300.00×10⁹/L
RBC: 0.00-8.50×10¹²/L
HGB: 0-250g/L
PLT: 0-3000×10⁹/L
HCT: 0.0-67.0%

Repeatability WBC≤2.0%(4.0-15.0×10⁹/L)
RBC≤1.5%(3.5-6.0×10¹²/L)
HGB≤1.5%(110-180g/L)
MCV≤1%(70-120fL)
PLT≤6.0%(100-149×10⁹/L)
≤4.0%(150-500×10⁹/L)

Sample mode Whole blood, capillary whole blood and pre-diluted modes

Interface 4 USB ports, 1 LAN port

Power requirement 100V-240V~, 50/60Hz, ≤200VA

Dimension 364mm(W)*498mm(H)*431mm(D)

Net weight 28kg



Zovec diagnostics GmbH

Carl-Reuther-Str. 1, 68305 Mannheim / Germany

Z-GEM 5

5 Part Automated Hematology Analyzer

Z-GEM 5

5 Part Automated Hematology Analyzer

- 10.4 inches TFT touch screen, easy to operate.
- 12.5° leaning angle of the screen is easy for operator to view.
- User friendly operation software.



- 4 USB ports for data transmitting and connection with printer, keyboard, mouse, barcode scanner etc.



- No barrier around the needle
- Suitable for either left hand or right hand



- All key components are imported, high quality and longer life. Syringe maintenance free.

Valve from Japan

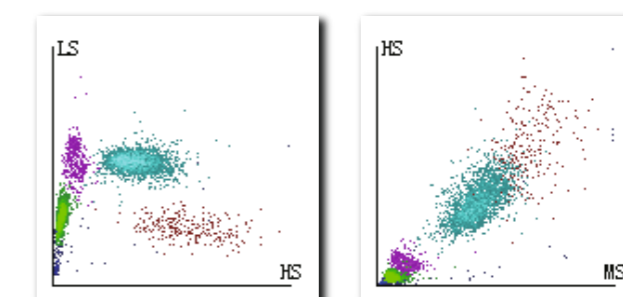
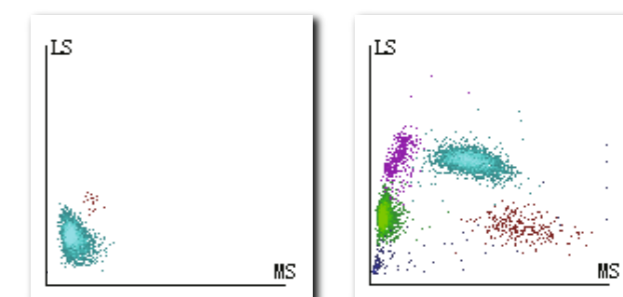
Reliable component

Liquid pump from Germany

Needle from Switzerland

Long-life syringe

- Real double optical channel test, both for Diff and BASO.
- BASO channel with optical counting, more precise.



- 4 reagents totally, 3 are routine use.
- 2 years shelf life