

RapidHemo

Integrated Analyzer

SPECIFICATIONS

Principle	Cell morphology for CBC
GICA test	Gold immuno chromatography assay
FIA test	Immunofluorescence assay
Biochemical analysis	Dry chemistry
HGB	Photoelectric colorimetry
Printer	Built-in thermal printer, external printer (optional)
Dimensions	400mm x 350mm x 450mm (L x W x H)
Communication	LIS, HIS, LAN port, 4 USB ports, Type C port, SIM port, RTC port
Sample Mode	Capillary/venous whole blood
Quality Control	Dry-type QC card
Sample Volume	30 μ L
Calibration Mode	Auto calibration
Power Supply	100-240V, 50/60Hz
Throughput	10 samples/hour
Weight	15kg (N.W.)
Display	10.1-inch touch screen

Zovec diagnostics GmbH

Carl-Reuther-Str. 1, 68305 Mannheim / Germany



New



RapidHemo

Integrated Analyzer

RapidHemo

Integrated Analyzer

7-Diff Hematology + Immunology + Biochemistry analysis

All-In-One

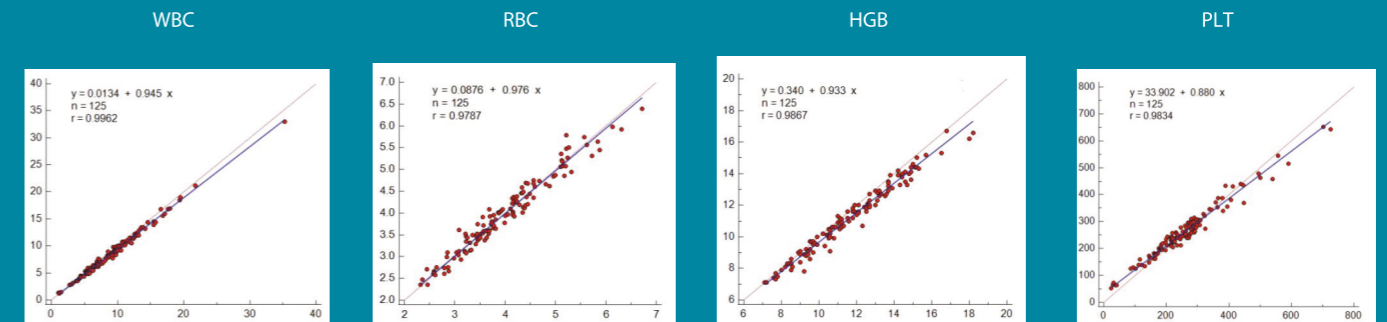
Combining hematology, immunoassay, biochemistry, urine and fecal testing in one device, our product simplifies diagnostics, reduces costs, and optimizes lab space, catering to the needs of healthcare

Advanced Cell Morphology Analysis

With more than 7-diff hematology analysis, AI-driven EHBT-50 can identify multi-classified blood cells and abnormal cells, such as RET, NRBC, AL, PLT...



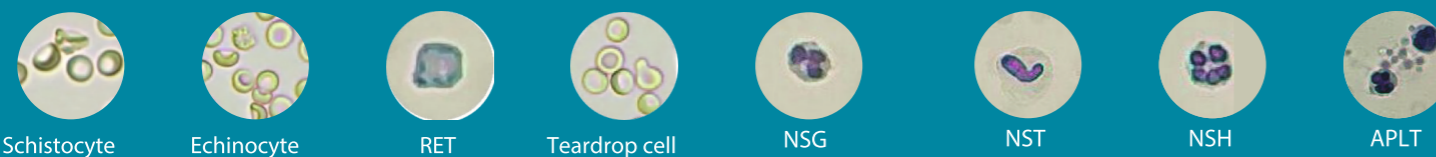
RapidHemo



Test Item

7-Diff CBC	WBC, NEU#, LYM#, MON#, EOS#, BAS#, NEU%, LYM%, MON%, EOS%, BAS%, RBC, HGB, HCT, MCV, MCH, MCHC, RDW-SD, RDW-CV, PLT, MPV, PDW, PCT, P-LCR, NST, NSG, AL, Sickle cell, Microcyte, APLT, NLR, PLR, RET, NRBC, ESR			
Immunoassay (27 items)	Bone Metabolism	25-OH-VD	Diabetes	HbA1C
	Kidney	mALB, NGAL, β 2-MG	Thyroid	T3, T4, TSH, FT3, FT4
	Anemia	Ferritin	Cardiac	NT-ProBNP, cTnI, Myo
	Sex Hormone	β -HCG, LH, FSH, Prog, PRL, E2, TEST, AMH	Thrombus	CK-MB, cTnI/Myo/CK-MB, CTnT
Biochemical Test	Inflammation	CRP, hs-CRP, SAA, CRP/SAA, IL-6		D-Dimer
	Blood Glucose & Lipid	GLU, TG, TC, UA	Renal & Liver Test	ALT, AST, UA, Crea.
Urine & Fecal Test	Renal Test	UA, Crea., UREA	Liver Test	ALT, AST, TB, ALB
	Can be expanded via OTA in the future			

*Customization is available



Linearity

Parameters	Linearity	Allowable Deviation	R ²
WBC	1.0 ~ 10.0*10 ⁹ /L	Within ± 0.5 *10 ⁹ /L	≥ 0.990
	10.1 ~ 99.9*10 ⁹ /L	Within $\pm 5\%$	≥ 0.990
RBC	0.30 ~ 1.00*10 ¹² /L	Within 0.05*10 ¹² /L	≥ 0.990
	1.01 ~ 7.00*10 ¹² /L	Within $\pm 5\%$	≥ 0.990
HGB	20 ~ 70g/L	≤ 2 g/L	≥ 0.990
	71 ~ 200g/L	Within $\pm 3\%$	≥ 0.990
PLT	20 ~ 100*10 ⁹ /L	Within ± 10 *10 ⁹ /L	≥ 0.990
	101 ~ 999*10 ⁹ /L	Within $\pm 10\%$	≥ 0.990

Precision

Parameters	Detection Range	CV
WBC	3.5 ~ 9.5*10 ⁹ /L	≤ 6.0
RBC	3.8 ~ 5.8*10 ¹² /L	≤ 3.0
HGB	115 ~ 175g/L	≤ 2.5
PLT	125 ~ 350*10 ⁹ /L	≤ 10.0
HCT/MCV	35~50% (HCT)	≤ 3.0
	82~100fL (MCV)	≤ 3.0

