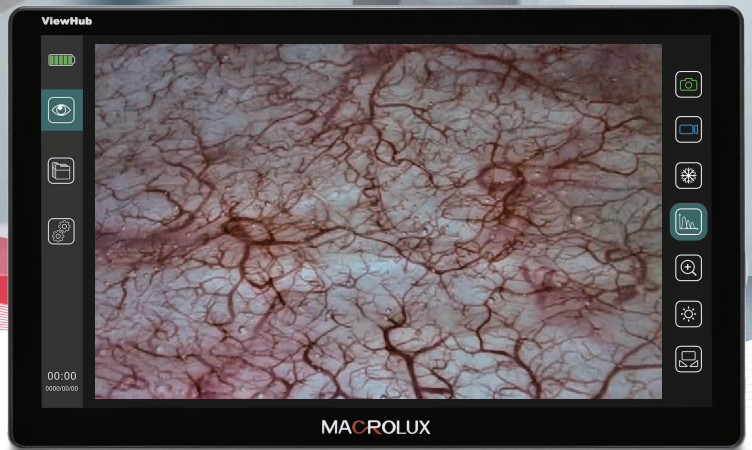


SEE BEYOND  
**Chromvue**



# S13

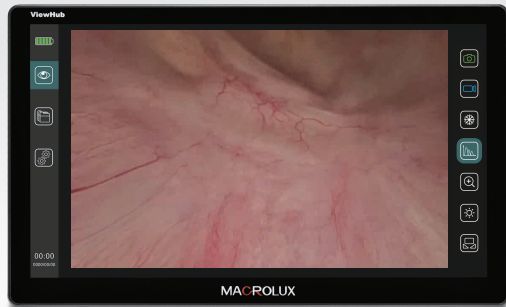
## ViewHub

Video Processor

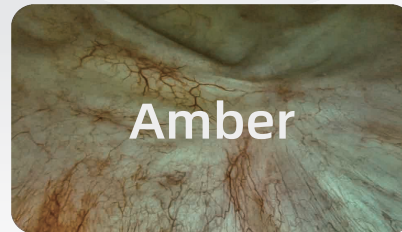
**MACROLUX**

# Chromvue

- A digital chroma feature



- Highlights mucosal surface vessels and minor bleeding



- Highlights submucosal vessels and bleeding to help detect underlying lesions



- Improve tissue visibility in complex and turbid conditions

**Multi-specialty compatability:** Urology, Airway Management, Gynecology, ENT...



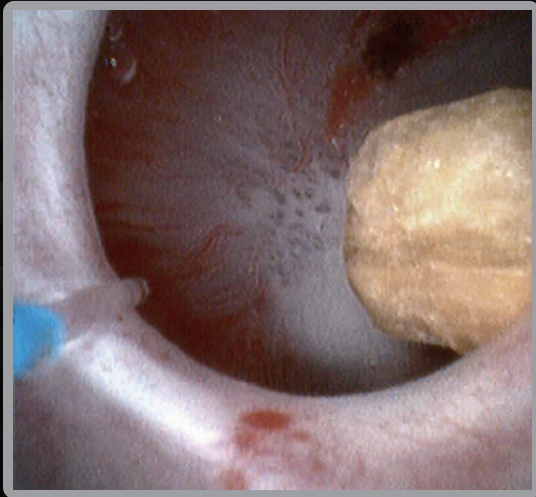
# CoralView

Single-Use Digital Flexible Ureteroscope

MACROLUX

# Everywhere in sight

Superior Visibility ▼



## Xclear Technology

High quality image, accurate color reproduction  
Reduce the risk of misjudgment and misoperation.

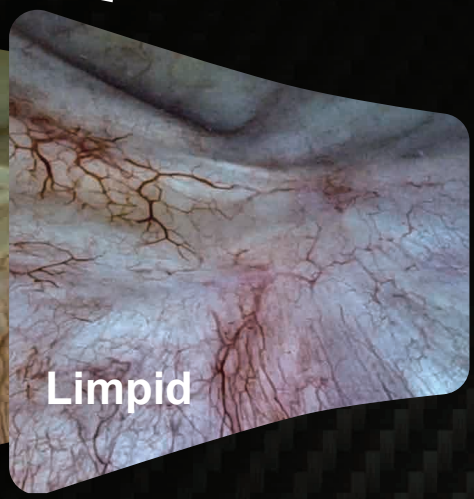
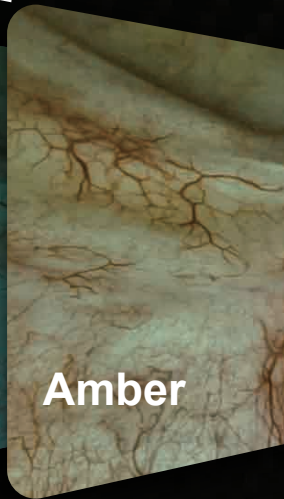
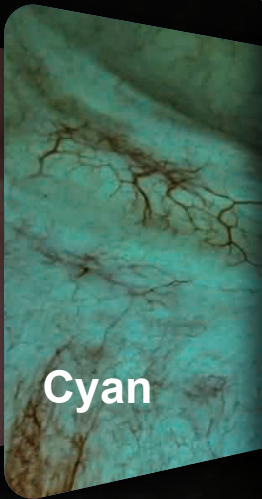
## Chromvue

A digital chroma that improves image quality \* ▼

In Turbid Environment

35% \*\*

45% \*\*



Cyan

Amber

Limpid

In Bleeding Environment

90% \*\*

80% \*\*

\*Comparing the Michelson contrast improvement rate

\*\*MacroLux internal test report

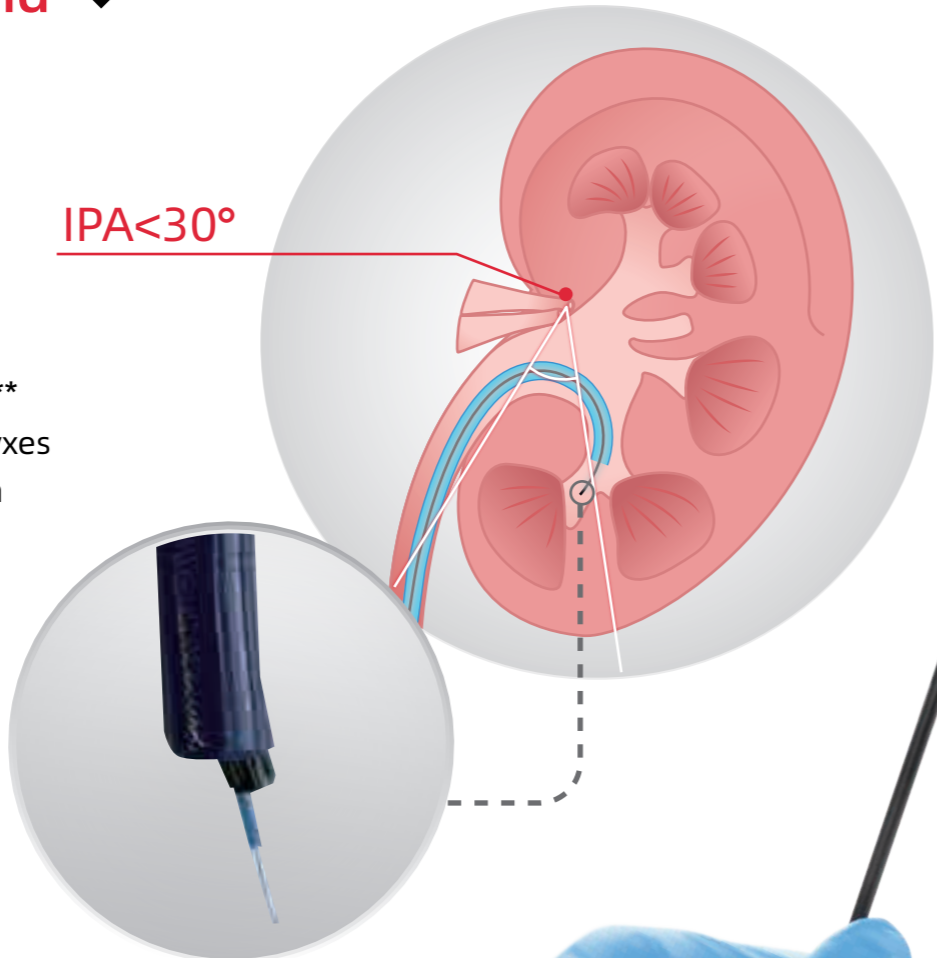
## Everywhere within reach

More than **PowerBend** ▼

### PowerBend Technology

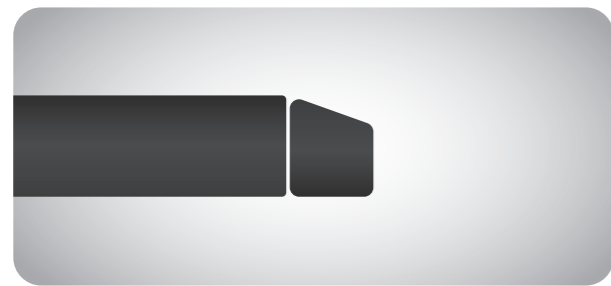
- 275° with instruments and FANS \*\*
- Effortless access to small IPA calyces
- Enhance Stone-Free Rate (SFR) in lower pole

IPA < 30°



## Essential Slimness ▼

7.5 Fr Tube with 6.7 Fr Wedge tip



- Smoother insertion for higher efficiency

## Everywhere under control

Enhanced Maneuverability ▼



### Programmable Buttons

- 2 Buttons with 4 Functions
- Single-person operation
- Empowered by your desires



- Auto-Hold & Step-less Lever
  - Reduce thumb fatigue
  - Reduce the time to aim at the stones

275°



### Excellent Coaxiality & Rotation

- Precise distal location
- Easier to adjust laser fiber to aim at stones



### Splash-resistant T-valve

- Paired with water valve
- Leak-proof and safe procedures
- Smoother and comfort operation



MACROLUX



reddot design award

# LoopView

## Single-use Bronchoscope

B27 Series | B38 Series | B50 Series | B58 Series

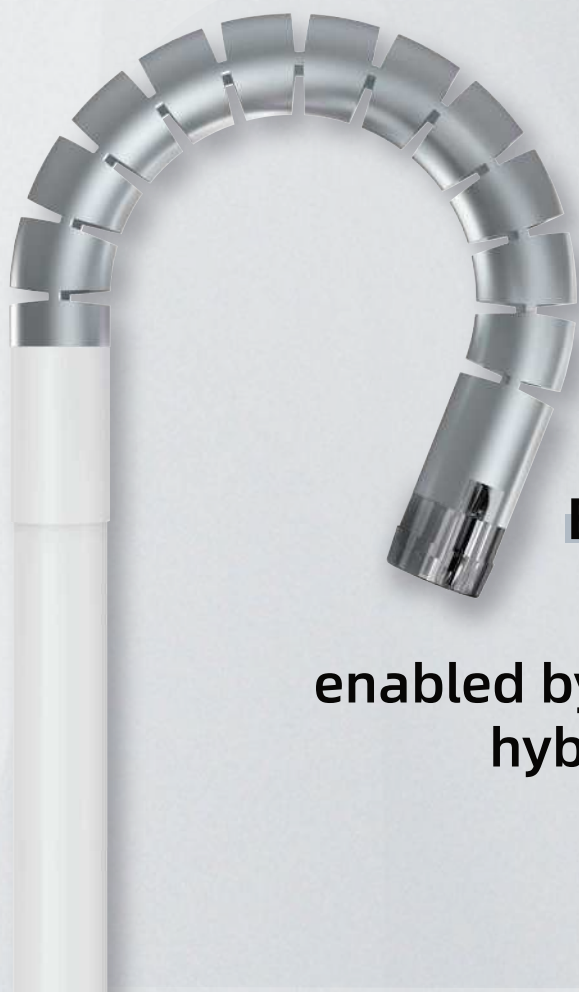
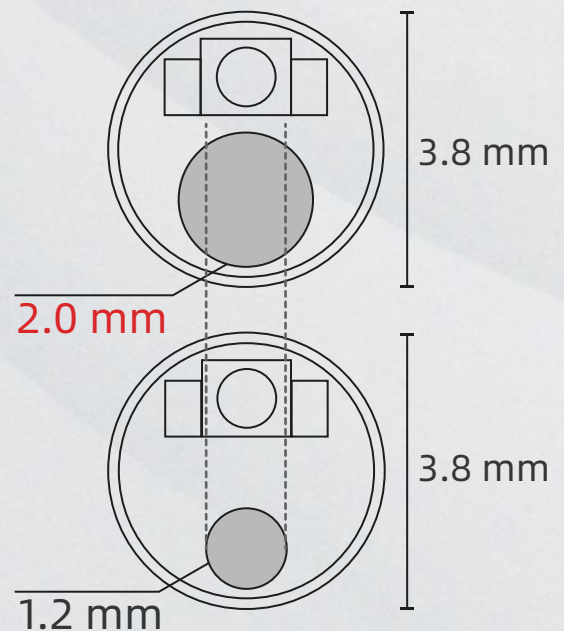


# Strong suction

Even for slim version ✓

# 670 %

Suction efficiency increase  
When compared  
with 1.2 mm channel\*



Enhanced bend resistance  
Reduced suction collapse

enabled by a spring-like structure with  
hybrid of rigid and soft material

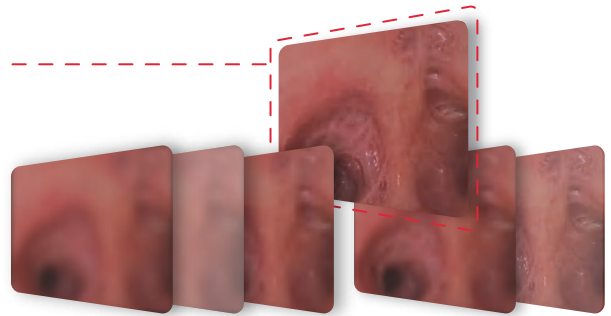
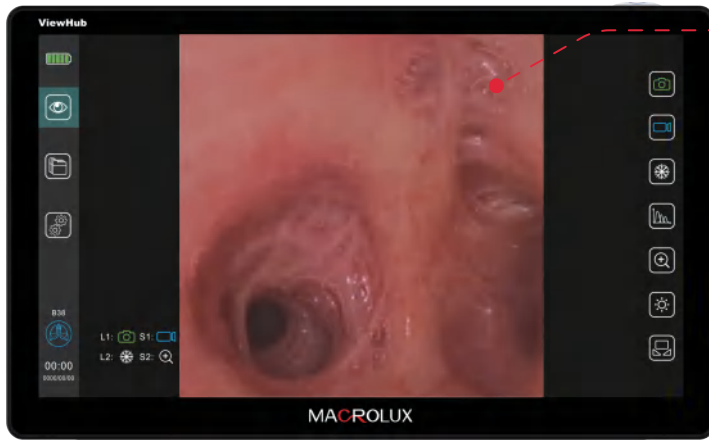
\* Calculated based on Hagen-Poiseuille Equation  $F = \frac{P \cdot d^4}{G \cdot L}$   
F: Flow, P: Pressure, d: diameter, G": viscosity, L: length

# Vivid image



In a **new** way ∨

MegaPixle **HD** ∨

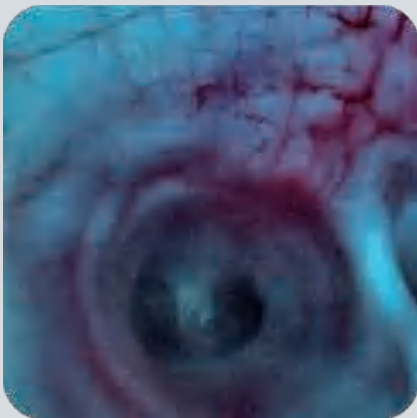


^ **SmartShot**\*

One click, Ten shots  
AI helps pick the clearest image

## Chromvue ∨

Cyan ∨



Amber ∨



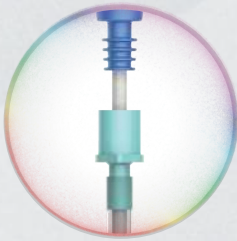
limpid ∨



Three digital chroma mode for various clinical demand

\* This feature is expected to be updated with the processor software by the end of 2025.

# Optimized efficiency ✓



Endobronchial tube fixation design



<1 S white balance time



Two programmable buttons with 4 functions



4 models meet various clinical demand

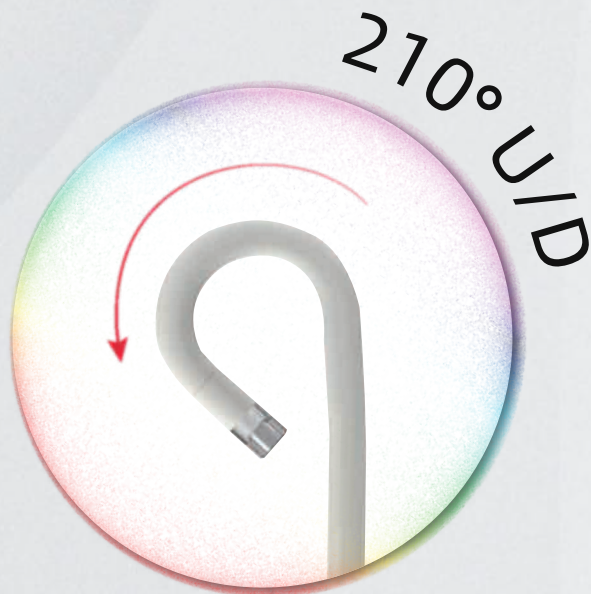


# Ultra Slim

For complex bronchi ✓



**120° Rotation design**  
Help more complex  
and deeper bronchi



**2.7 mm O.D. 1.2 mm I.D.**  
**Slimmer Bending Radius**



**Insertion Scale**  
Easy to tell  
depth information



**Smooth material surface**  
Guarantee lower  
friction with tissue



MACROLUX

# SeleneView

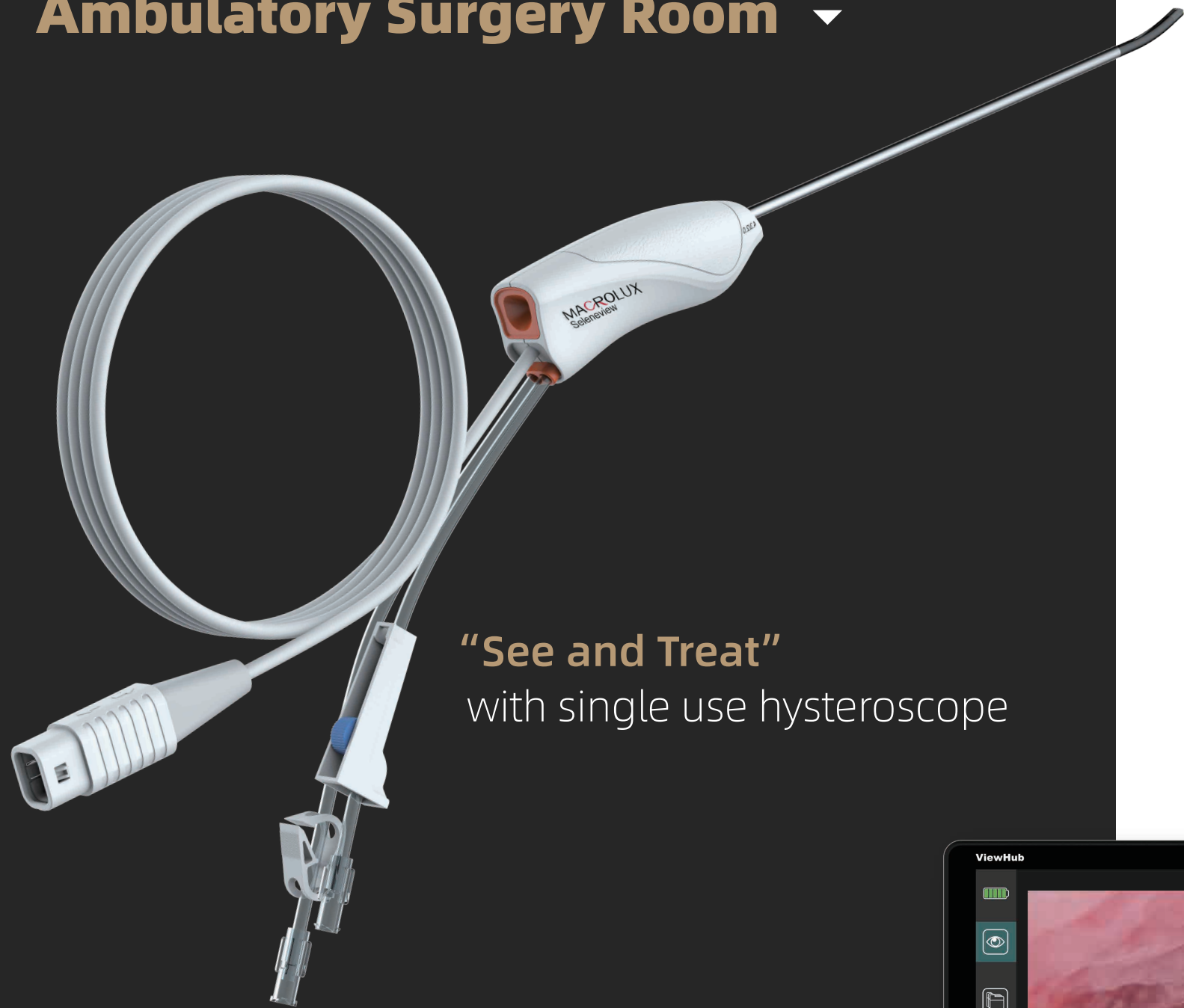
Single-Use Digital Hysteroscope ▼



## H series

HC29 | HC35 | HO35 | HO42

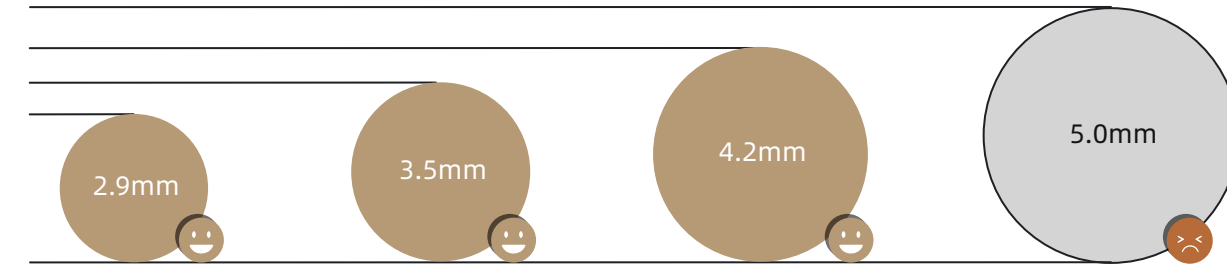
**Office | Outpatient | Ambulatory Surgery Room** ▾



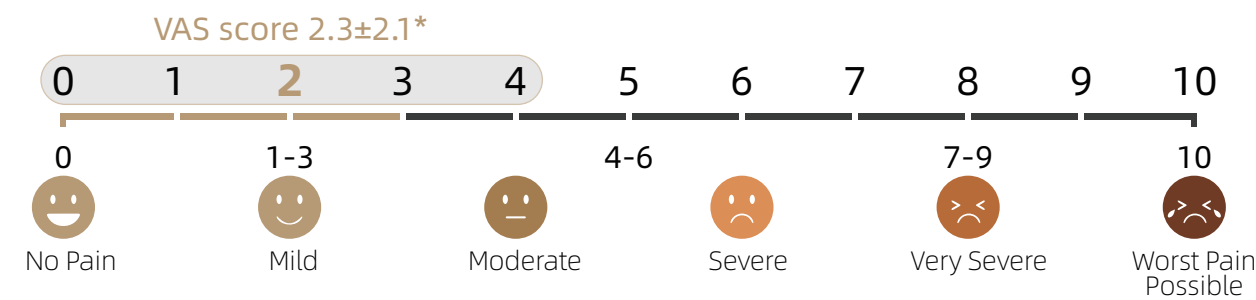
**“See and Treat”**  
with single use hysteroscope

**Gentle Care** ▾

Comfort in every moment

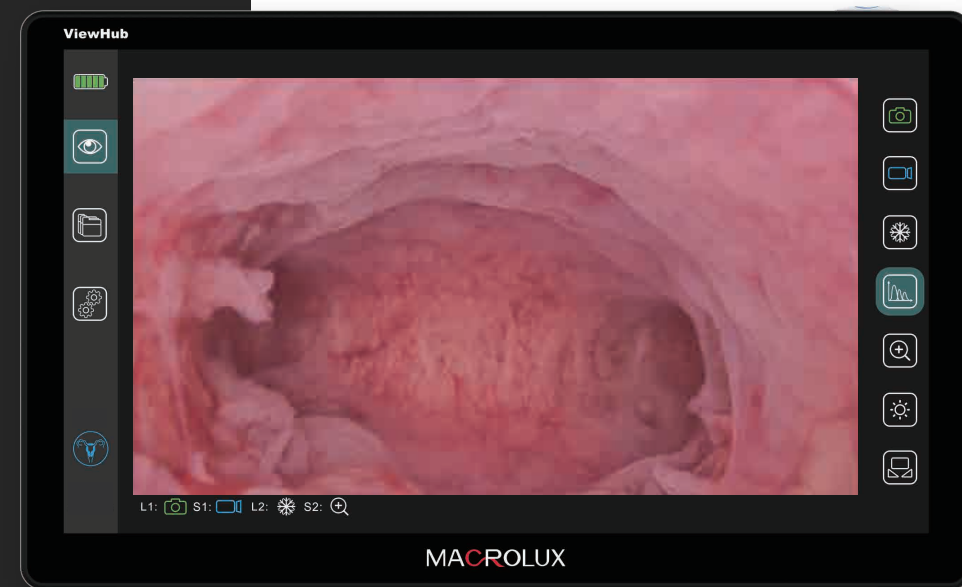


Vaginoscopic approach offers three key advantages:  
No need for cervical dilation, no anesthesia, and no speculum.



**Superior Visibility**

Clarity in a **new** way ▾



**HD** HD Pixel with 140° Wide FOV

**Optimized Efficiency**

Convenient in every step ▾

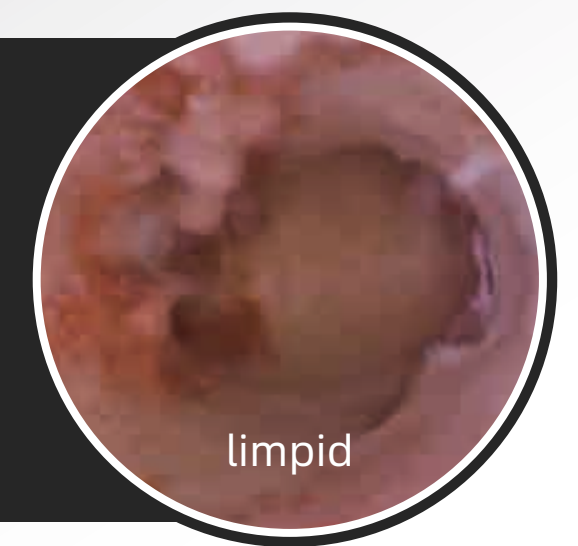
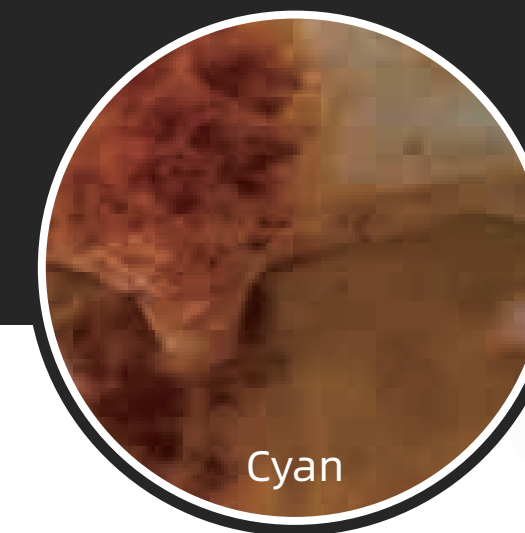
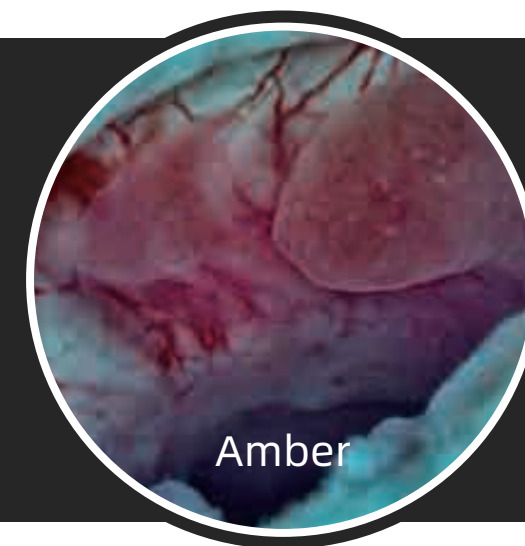
**Ultra light 01**  
Only 50 g weight, comfortable for whole day operation

**See and treat 02**  
Compatible with 5 Fr instrument

**Take and use 03**  
No need for assembling

**5s 04**  
Achieve fast clear vision

**Chromvue**



**Lower Cost**  
Shorten hospital stay and reduce hospitalization costs for patients.

**High Efficiency**  
Same-day surgery and discharge

**Less Pain**  
Reduce cervical trauma and preserve fertility



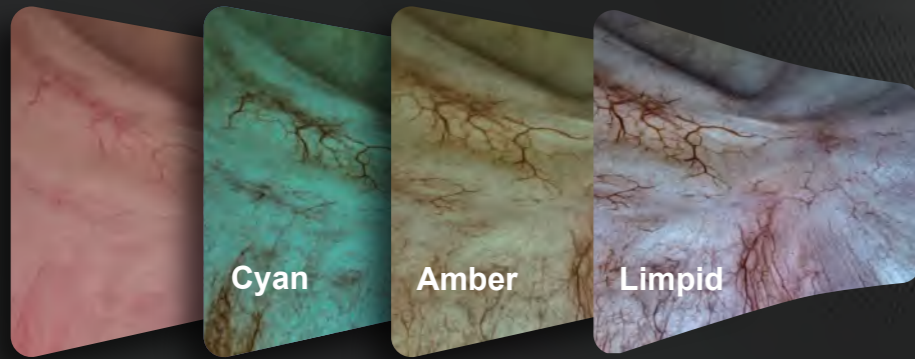
# BubbleView

Single-Use Digital Flexible Cystoscope

MACROLUX

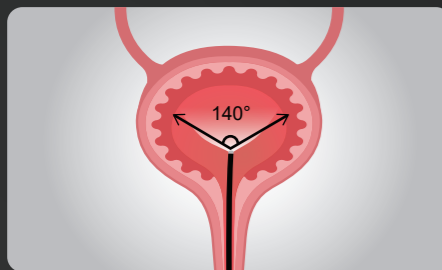
## Crystal-Clear Image, Superior Diagnosis HD

HD image, accurate color reproduction  
image enhancement by **Chromvue**.\*

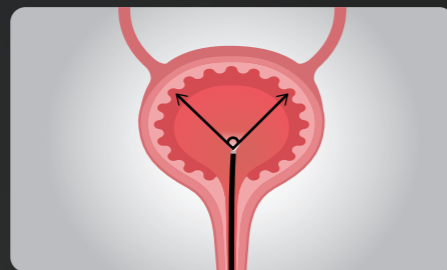


200%\* ↑ 250%\* ↑ 130%\* ↑

140° field of view, 3-100 mm depth of field, excellent surgical field.



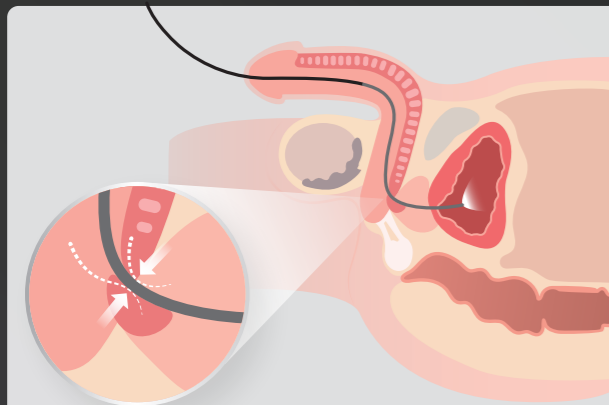
MacroLux



Other's

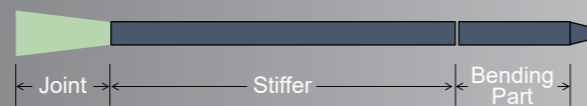
## Refined Design, Smoother Insertion ↘

Precise Easetip bullet-shape design, ensuring smooth insertion and patient comfort.



Comparison with other's distal end

Appropriate stiffness, balancing operation efficiency with patient comfort.



\*MacroLux internal test report - In Bladder simulator and blood environment, Comparing the Michelson contrast improvement rate.

## Easier Navigation, Efficient Cystoscopy ☞

### 235° Up / 145° Down

Smooth flexibility, easier bladder neck examination

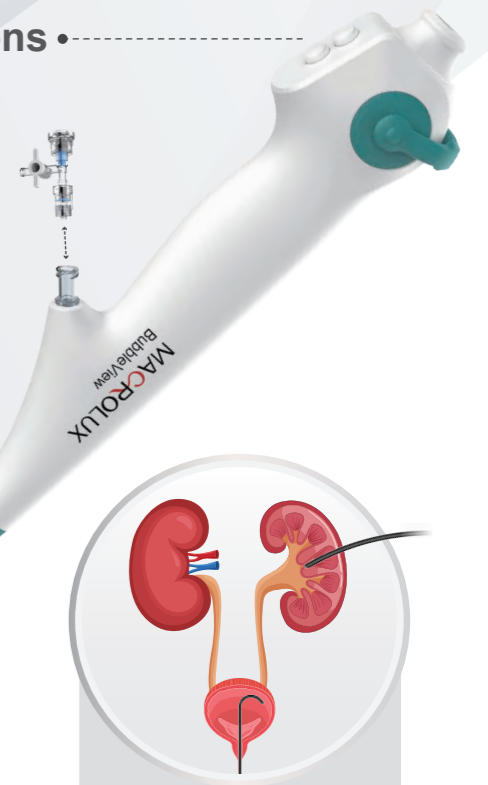
### Programmable Buttons

Single-person operation, empowered by your desires



### Excellent Coaxiality

Seamless transmission



Multiple access routes through urethra or PCNL.

## Slimmer OD, Complex PCNL Solution ☞



### Suction Design

Ensure clear visibility

### 3.8 mm Outer Diameter

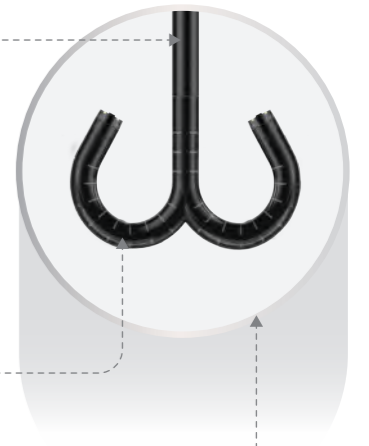
Suitable for mini-PCNL (C38-CS/CRS)

### 7 mm Bending Radius

Detect small calices while protecting the tissue

### 235° Up / Down

Precisely aim at the stone



Urology

# CONNECT WITH US



**HALSTED HEALTHCARE**  
TRADITION & INNOVATION

**KERALA:**

No:KP XIX/10 G,H, Appanchira centre,  
Kadathuruthy, Kottayam, Kerala- 686604

**TAMILNADU :**

7/249, 5th Cross St, Rajagopalapuram,  
Moulivakkam, Chennai, Tamil Nadu -600125

**TECHNICAL ENQUIRY:**

Mobile: +91 87541 94534  
Email: Pradhip@halstedhealthcare.com