

The background is split into two main sections. The left section is a vertical purple-to-blue gradient with a glowing globe on the left and a complex circuit board pattern of white lines and dots extending across it. The right section is white with a large, abstract, 3D-style graphic in the bottom right corner, composed of overlapping curved shapes in shades of purple, blue, and green.

COMPANY PROFILE

PT DAYA SINERGI INOVASI

TENTANG PERUSAHAAN

About Company

PT DAYA SINERGI INOVASI adalah perusahaan teknologi informasi yang berfokus pada pengembangan solusi digital inovatif untuk mendukung transformasi bisnis di era digital.

PT DAYA SINERGI INOVASI is an information technology company that focuses on developing innovative digital solutions to support business transformation in the digital era.

- Memberikan solusi IT yang efisien dan scalable
- *Providing efficient and scalable IT solution*
- Meningkatkan produktivitas bisnis melalui teknologi
- *Improving business productivity through technology*
- Mendorong inovasi digital yang berkelanjutan
- *Driving sustainable digital innovation*



CORE BUSINESS

1 Seat Management

2 Manage Service

3 IT Infrastructure

4 Hyper Converged Infrastructure

5 Backup & Recovery Management

6 IT Professional Service

7 Network & Infrastructure

8 Network Security

9 Security Assessment

10 Surveillance & Analytics

11 Software Solution

SEAT MANAGEMENT

Layanan pengelolaan perangkat IT end user untuk memastikan efisiensi dan ketersediaan operasional.
End user IT device management services to ensure operational efficiency and availability.



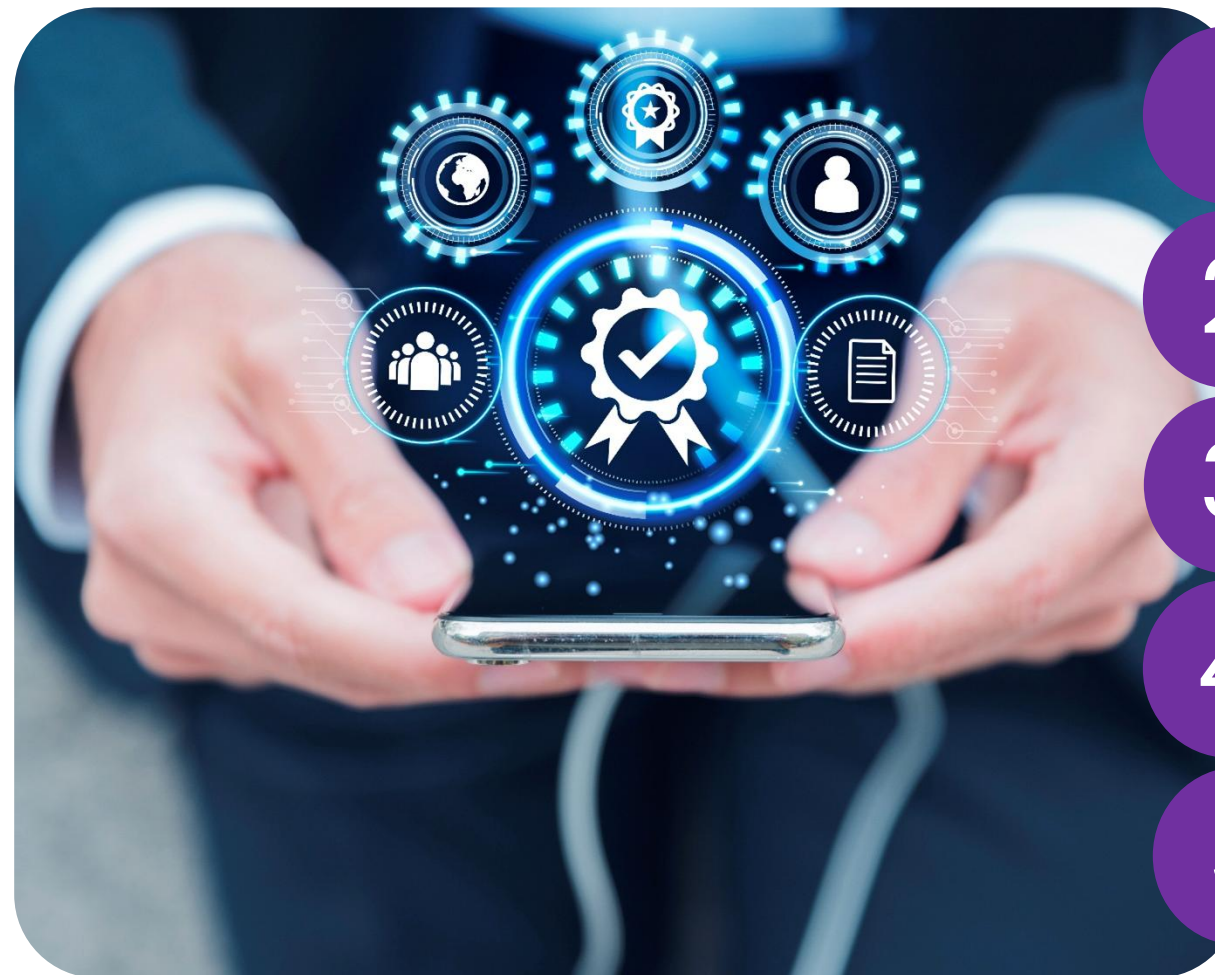
- Laptop/ MAC Book
- Computer Desktop
- Monitor LCD/LED
- Smartphone
- Printer & Scanner
- UPS



MANAGE SERVICE

Layanan pengelolaan sistem teknologi informasi secara profesional oleh pihak ketiga untuk mendukung operasional bisnis perusahaan secara efisien dan berkelanjutan.

Professional information technology system management services by third parties to support company business operations efficiently and sustainably.



1

Efisiensi Biaya - Biaya tetap bulanan tanpa harus membangun tim IT internal besar.
Cost Efficiency - Fixed monthly costs without having to build a large internal IT team.

2

Fokus ke Bisnis Anda - Perusahaan bisa fokus pada core business.
Focus on Your Business - Companies can focus on their core business.

3

Akses ke Tenaga Ahli - Didukung oleh profesional dengan sertifikasi dan pengalaman.
Access to Experts - Supported by professionals with certification and experience.

4

Proaktif - Masalah terdeteksi dan diatasi sebelum berdampak besar.
Proactive - Problems are detected and addressed before they have a major impact.

5

Skalabilitas - Kapasitas dan layanan bisa disesuaikan dengan kebutuhan bisnis.
Scalability - Capacity and services can be adjusted to business needs.

IT INFRASTRUCTURE

Layanan penyediaan infrastruktur dan fasilitas untuk menyimpan, mengelola, dan mengamankan data serta sistem IT perusahaan secara terpusat dan professional.

Services providing infrastructure and facilities to store, manage, and secure company data and IT systems in a centralized and professional manner.

COLLOCATION

1

Penyewaan ruang di data center untuk menempatkan server dan perangkat IT, dengan dukungan infrastruktur.

Renting space in a data center to house servers and IT equipment, with infrastructure support.

CLOUD SERVER & BACKUP

2

Layanan untuk meningkatkan performa dan keamanan website atau aplikasi perusahaan dengan direct peer cloud ke public cloud pilihan Anda seperti Azure, AWS, GCP, Alicloud dan lain lain.

Services to improve the performance and security of websites or corporate applications with direct peer cloud to the public cloud of your choice such as Azure, AWS, GCP, Alicloud and others.



IT INFRASTRUCTURE

ON-PREMISES SERVER STORAGE 3

Layanan penyimpanan yang menyediakan ruang penyimpanan untuk server yang berada di lokasi perusahaan.
A storage service that provides storage space for servers located on company premises.

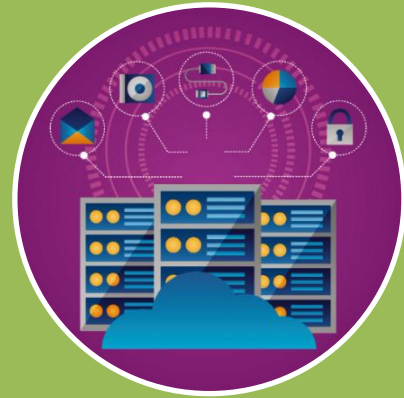
- **SERVER STORAGE:** Solusi komputasi dan penyimpanan data perusahaan pada data center on premise client atau di collocation.
- **SERVER STORAGE:** Enterprise computing and data storage solutions in on-premises client data centers or collocations.
- **STORAGE:** Solusi penyimpanan data bisnis Anda dengan teknologi NAS (Network-Attached Storage) ataupun SAN (Storage Area Network).
- **STORAGE:** Solutions for storing your business data using NAS (Network-Attached Storage) or SAN (Storage Area Network) technology.



HYPER CONVERGED INFRASTRUCTURE

Solusi yang menggabungkan server, storage, dan virtualisasi dalam satu platform terintegrasi.

A solution that combines servers, storage, and virtualization in one integrated platform.



Virtualisasi: HCI menggunakan mesin virtual (VM) untuk mengabstraksi komputasi, penyimpanan, dan jaringan.

Virtualization: HCI uses virtual machines (VMs) to abstract compute, storage, and networking.



Software-defined: Semua fungsi dikendalikan oleh perangkat lunak, bukan perangkat keras khusus.

Software-defined: All functions are controlled by software, not dedicated hardware.



Integrasi penuh: Komputasi, storage, dan networking berjalan dalam satu sistem sehingga operasional lebih sederhana.

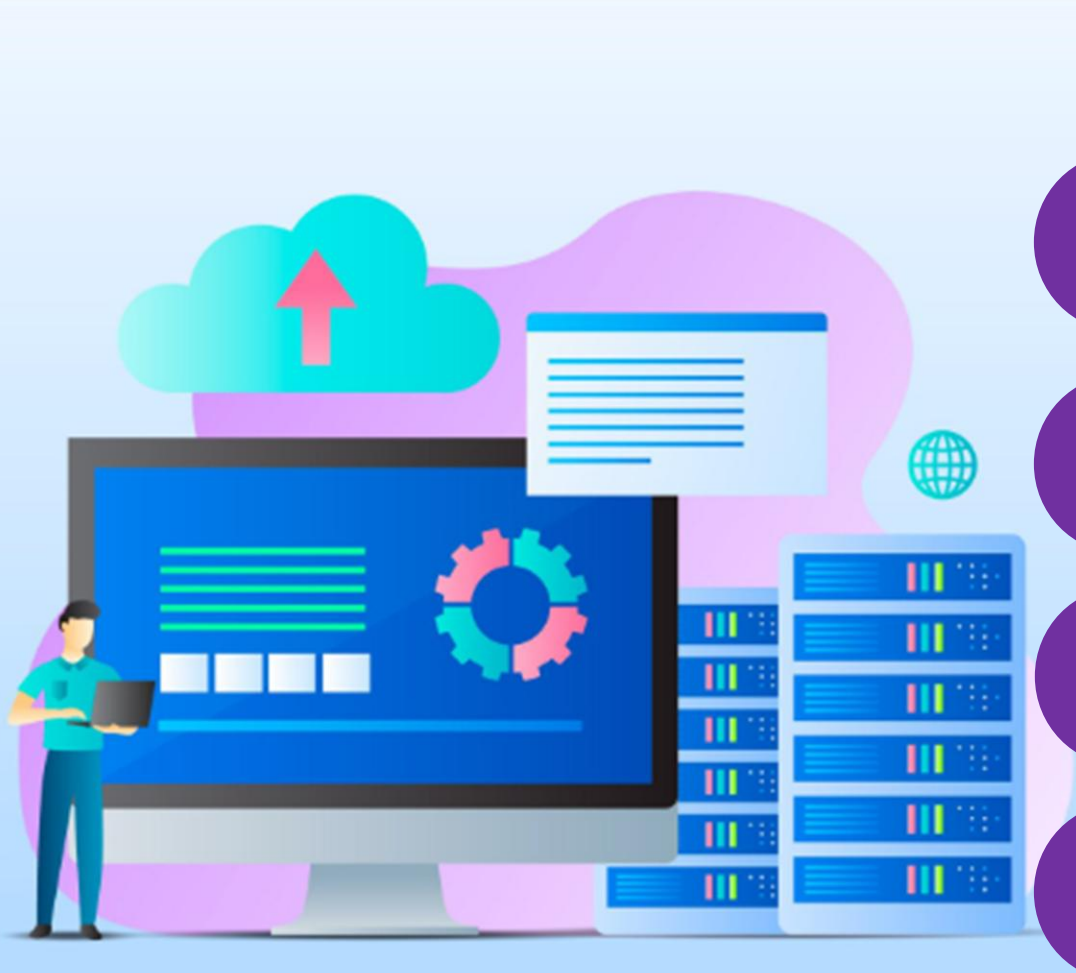
Full integration: Computing, storage, and networking run in one system, simplifying operations.



BACKUP & RECOVERY MANAGEMENT

Proses pengelolaan pencadangan (backup) dan pemulihan (recovery) data untuk memastikan keamanan, ketersediaan, serta keberlangsungan operasional sistem atau bisnis.

The process of managing data backup and recovery to ensure the security, availability and continuity of system or business operations.

- 
- 1** Perlindungan dari kehilangan data akibat human error, kerusakan hardware, atau bencana.
Protection against data loss due to human error, hardware failure, or disaster.
 - 2** Mitigasi resiko serangan siber seperti ransomware.
Mitigating the risk of cyber attacks such as ransomware.
 - 3** Memastikan kelangsungan bisnis dengan Recovery Time Objective (RTO) dan recovery Point Objective (RPO) yang sesuai.
Ensure business continuity with appropriate Recovery Time Objective (RTO) and Recovery Point Objective (RPO).
 - 4** Kepatuhan regulasi: Banyak industry diwajibkan menyimpan Salinan data untuk audit dari keamanan.
Regulatory compliance: Many industries are required to keep copies of data for security audits.

VERITAS™

Zerto

a Hewlett Packard
Enterprise company

veeam

IT PROFESSIONAL SERVICE

Layanan teknologi informasi yang disediakan oleh tenaga ahli untuk membantu perusahaan merancang, mengimplementasikan, dan mengelola solusi IT sesuai kebutuhan bisnis.

Information technology services provided by experts to help companies design, implement, and manage IT solutions according to business needs.

ENGINEER ON SITE

1

Layanan pengelolaan SDM dengan kompetensi & sertifikasi khusus di bidang teknik untuk pengelolaan infrastruktur jaringan.

Human resource management services with specialized competencies & certifications in the engineering field for network infrastructure management.

- **EOS Dedicated:** Engineer on site yang ditempatkan di lokasi client.
- **EOS Dedicated:** *On-site engineers stationed at the client's location.*
- **EOS on Demand:** Engineer yang dapat dikirimkan ke lokasi client bersifat non dedicated.
- **EOS on Demand:** *Non-dedicated engineers who can be dispatched to the client's location.*

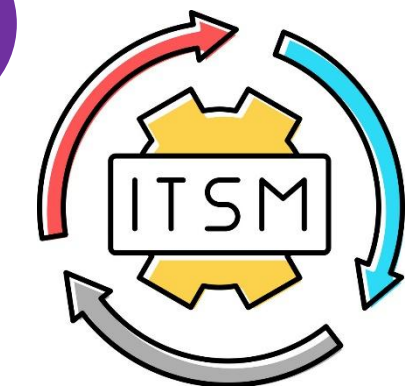


IT PROFESSIONAL SERVICE

IT CONSULTANT

2

Layanan tenaga profesional yang memberikan saran, solusi, dan strategi IT untuk membantu bisnis meningkatkan efisiensi, daya saing, dan kinerja IT.
Professional services that provide IT advice, solutions and strategies to help businesses improve IT efficiency, competitiveness and performance.



- **ISO 27001:** Standar internasional yang dirancang untuk membantu organisasi melindungi informasi secara sistematis dan efektif.
- *ISO 27001: An international standard designed to help organizations systematically and effectively protect information.*
- **ISO/IEC 20000-1:** Standar internasional yang menetapkan persyaratan bagi organisasi dalam merancang, menerapkan, dan meningkatkan layanan TI secara efektif.
- *ISO/IEC 20000-1: An international standard that specifies requirements for organizations to effectively design, implement, and improve IT services.*
- **ISO 27701:** Standar internasional yang berfokus pada perlindungan data pribadi dan membantu organisasi mematuhi peraturan privasi global.
- *ISO 27701: An international standard focused on the protection of personal data and helping organizations comply with global privacy regulations.*

- **IT SERVICE MANAGEMENT:** Pendekatan strategis untuk merancang, menyampaikan, mengelola, dan meningkatkan layanan teknologi informasi.
- *IT SERVICE MANAGEMENT: A strategic approach to designing, delivering, managing, and improving information technology services.*
- **COBIT 2019:** Kerangka kerja tata kelola dan manajemen teknologi informasi.
- *COBIT 2019: A framework for the governance and management of information technology.*
- **COMMUNICATION CHANGE MANAGEMENT:** Proses komunikasi strategis yang mendukung keberhasilan implementasi perubahan dalam organisasi.
- *COMMUNICATION CHANGE MANAGEMENT: A strategic communication process that supports the successful implementation of change within an organization.*

CORE BUSINESS

NETWORK & INFRASTRUCTURE

Layanan yang mencakup perancangan, pembangunan, pengelolaan, dan pemeliharaan jaringan komputer serta infrastruktur pendukungnya.

Services that include the design, construction, management and maintenance of computer networks and their supporting infrastructure

BANDWIDTH MANAGEMENT

Solusi manajemen internet yang mencakup manajemen bandwidth, kontrol aplikasi, kontrol lalu lintas, hotspot, dan kontrol proxy ilegal.

Internet management solution that includes bandwidth management, application control, traffic control, hotspot and illegal proxy control.



NETWORK SECURITY

Metode dan teknologi yang digunakan untuk menjaga keamanan jaringan computer dari ancaman eksternal maupun internal.

Methods and technologies used to maintain computer network security from internal and external threats.

1 END POINT PROTECTION SERVICE

Solusi keamanan yang dirancang untuk melindungi perangkat (endpoints) dan pengguna dari serangan siber.

A security solution designed to protect devices (endpoints) and users from cyber attacks.

2 FIREWALL AS A SERVICE

Layanan Firewall berbasis On Premise maupun Cloud. Terdiri atas End Point Protection untuk per user atau network.

On-premise and cloud-based firewall services. Consisting of endpoint protection for each user or network.

3 SECURE ACCESS SERVICE EDGE (SASE)

SASE menggabungkan teknologi jaringan dan keamanan ke dalam satu solusi yang terintegrasi.

SASE combines networking and security technologies into one integrated solution.

kaspersky

SOPHOS

FORTINET

VERSA
NETWORKS

Forcepoint

HPE aruba
networking

SECURITY ASSESSMENT

Layanan yang bertujuan untuk melindungi sistem, data, dan jaringan perusahaan dari ancaman siber melalui solusi keamanan yang terintegrasi dan profesional.

Services that aim to protect company systems, data and networks from cyber threats through integrated and professional security solutions.



1

Cyber Security Advisor - Dirancang untuk mengedukasi tenaga kerja Anda tentang praktik terbaik keamanan siber dan membekali mereka untuk mengenali dan merespons potensi ancaman siber.

Cyber Security Advisor - Designed to educate your workforce on cybersecurity best practices and equip them to recognize and respond to potential cyber threats.

2

Penetration Test - Proses evaluasi keamanan untuk menguji kerentanan sistem komputer atau jaringan dengan tujuan menemukan dan mengevaluasi kelemahan keamanan.

Penetration Test - A security evaluation process to test the vulnerability of a computer system or network with the aim of finding and evaluating security weaknesses.

3

Vulnerability Assessment - Proses identifikasi, penilaian, dan analisis kerentanan keamanan yang ada dalam sistem, jaringan, atau infrastruktur IT.

Vulnerability Assessment - The process of identifying, assessing, and analyzing security vulnerabilities that exist in an IT system, network, or infrastructure.

4

SOC on Premise - Pusat operasi keamanan untuk mendeteksi, menanggapi, dan menangani insiden keamanan di dalam lingkungan IT organisasi tersebut.

SOC on Premise - A security operations center to detect, respond to, and handle security incidents within the organization's IT environment.

5

Virtual SOC - Pusat operasi keamanan yang beroperasi dalam lingkungan virtual atau cloud.

Virtual SOC - A security operations center that operates in a virtual or cloud environment.



SURVEILLANCE & ANALYTICS

Layanan yang menggabungkan sistem pengawasan (seperti CCTV dan sensor) dengan analisis data cerdas untuk meningkatkan keamanan, efisiensi operasional, dan pengambilan keputusan berbasis data.

Services that combine surveillance systems (such as CCTV and sensors) with intelligent data analytics to improve security, operational efficiency, and data-driven decision-making.

CCTV SURVEILLANCE

1

Sistem pengawasan yang menggunakan kamera terpasang untuk memantau area tertentu secara real-time.

A surveillance system that uses installed cameras to monitor a specific area in real-time.

ANALYTICS SURVEILLANCE

2

Teknologi yang memungkinkan kamera CCTV untuk menganalisis video yang direkam dan mendeteksi pola, perilaku, atau kejadian tertentu.

Technology that allows CCTV cameras to analyze recorded video and detect certain patterns, behaviors, or events.

HIKVISION

ahua
TECHNOLOGY



SOFTWARE SOLUTION



Productivity	Word, Excel, PowerPoint, OneNote, Access (PC), Publisher (PC), Outlook
Collaboration & Team	Microsoft Teams, SharePoint, Yammer (Viva Engage), Planner, To Do, Bookings
Cloud & Storage	OneDrive, Microsoft 365 Backup, Microsoft 365 Archive
Analytics & Business	Power BI, Dynamics 365 (integration)
Security & AI	Microsoft Defender for Office 365, Microsoft Defender for Endpoint/Identity, Cloud App Security, Microsoft Copilot (AI)



Creative & Design	Adobe Creative Cloud for Business, Adobe Express, Adobe Firefl
Document & PDF	Adobe Acrobat Pro, Adobe Acrobat Studio, Adobe Sign, Adobe Scan
Digital Experience	Adobe Experience Cloud, Adobe Experience Manager (AEM), Adobe Campaign, Adobe Target, Adobe Analytics, Adobe Commerce (Magento)
AI & Automation	Adobe Sensei, Adobe Firefly (AI generative)



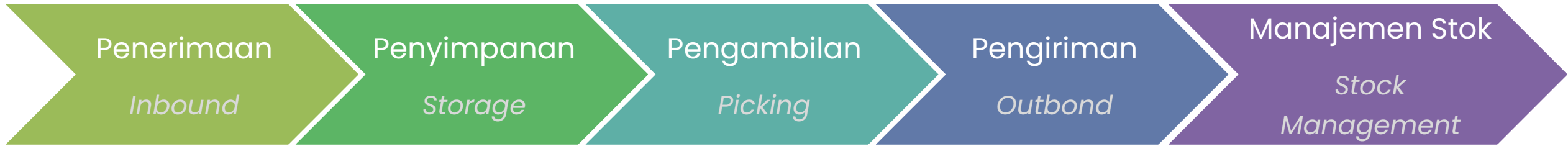
Architecture, Engineering & Construction	AutoCAD, AutoCAD LT, Revit, Civil 3D, InfraWorks, Navisworks, FormIt
Product Design & Manufacturing	Fusion 360, Inventor, Vault, Alias, Powermill, FeatureCAM, Moldflo
Media & Entertainment	Maya, 3ds Max, Arnold, MotionBuilder, Mudbox, ShotGrid
Collection & Package	AEC Collection, Product Design & Manufacturing Collection, Media & Entertainment Collection

SOFTWARE SOLUTION



WAREHOUSE MANAGEMENT SYSTEM (WMS)

Sistem perangkat lunak yang digunakan untuk mengelola, mengontrol, dan mengoptimalkan seluruh aktifitas di di dalam gudang.
A software system used to manage, control, and optimize all activities in the warehouse.



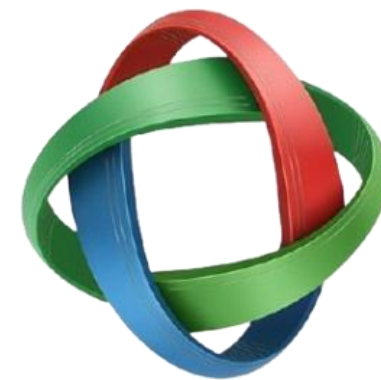
Types of WMS

Standalone WMS	Sistem berdiri sendiri, tidak terintegrasi dengan system lain. <i>Stand-alone system, not integrated with other systems.</i>
ERP Module WMS	Terintegrasi dengan modul lain seperti Keuangan, Produksi, Penjualan, dll. <i>Integrated with other modules such as Finance, Production, Sales, etc.</i>
Cloud-Based WMS	Berbasis internet, bisa diakses dimana saja. <i>Internet based, accessible anywhere.</i>
Supply Chain Execution (SCE) Integrated WMS	Terintegrasi dengan sistem supply chain seperti transportasi, distribusi, dan order management. <i>Integrated with supply chain systems such as transportation, distribution, and order management.</i>

OUR CLIENT



PT. KONISHILEMINDOINDONESIA



PT Global Alfa Solusindo





Terimakasih
Thank you

HUBUNGI KAMI

Contact us



+62 831-9941-2471



sales@daysitech.co.id



www.daysitech.co.id



DaysiTech

The logo for DaysiTech features a stylized infinity symbol or ribbon graphic in shades of purple, blue, and green, positioned to the left of the company name 'DaysiTech' which is written in a bold, sans-serif font.