



Global CNC Services

At **TECH LAND** We pride ourselves on delivering comprehensive, industry-leading solutions tailored to the demanding needs of the **Oil, Gas, and Energy** sectors. Our commitment to excellence drives every aspect of our service delivery. Explore our range of high-quality spare parts and components. Our CNC machining services allow us to manufacture all types of spare parts to meet your specific needs. If you require repairs for your spare parts, we offer 3D scanning and molding services to create precise replacements tailored just for you, like as turbines and compressors mechanical spare parts, all kind of valves, raw materials prep, scanning/analysis, and pumps.



Precision Manufacturing Excellence

Advanced CNC Machining Capabilities

Our state-of-the-art CNC machining services represent the pinnacle of precision manufacturing for the energy sector. We specialize in producing high-quality spare parts and components engineered to withstand the most demanding operational environments found in oil, gas, and industrial applications.

Our advanced manufacturing facilities are equipped with cutting-edge computer numerical control technology, enabling us to fabricate components with tolerances measured in microns. This precision is critical for applications where even minor deviations can result in equipment failure, operational downtime, or safety concerns.

- **Multi-axis machining centers** for complex geometries and tight tolerances
- **Material versatility** including stainless steel, titanium, aluminum, and specialized alloys
- **Quality assurance protocols** meeting ISO standards and industry certifications
- **Rapid prototyping capabilities** for custom component development
- **Production scalability** from single replacement parts to large batch orders

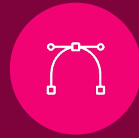


Innovative 3D Scanning & Reverse Engineering



3D Scanning Technology

Our high-precision 3D scanning equipment captures every detail of worn or damaged components with micrometer accuracy, creating detailed digital models for analysis and reproduction.



Digital Modeling

Advanced CAD/CAM software transforms scan data into manufacturing-ready designs, optimizing geometry for improved performance and durability.



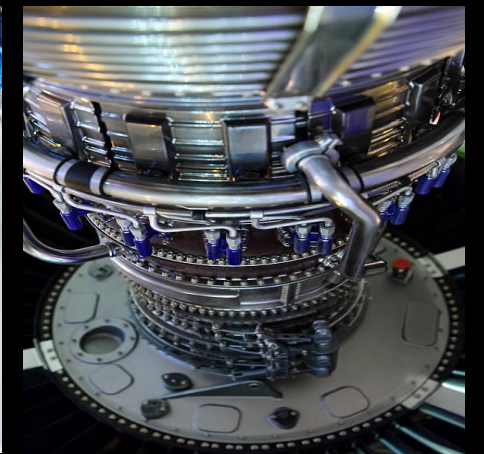
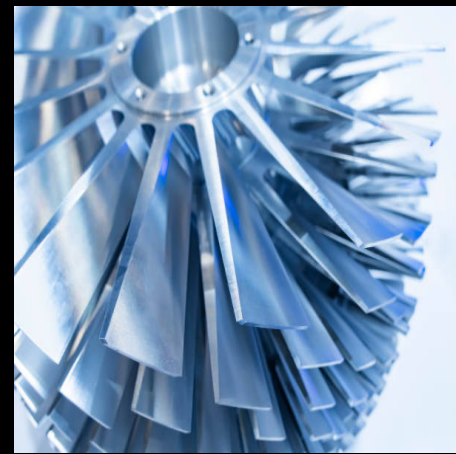
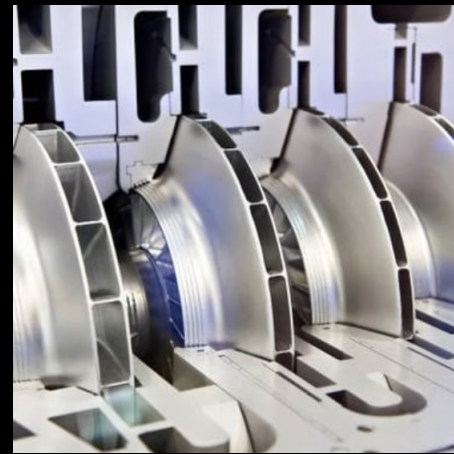
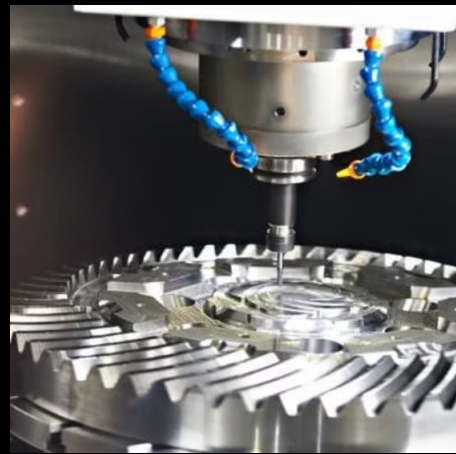
Precision Fabrication

Our CNC machining centers bring digital models to life, producing exact replicas or enhanced versions of your critical components.

When original parts are obsolete, unavailable, or prohibitively expensive, our 3D scanning and molding services provide a cost-effective solution. We create precise replacements tailored to your exact specifications, often improving upon original designs with enhanced materials or optimized geometries. This capability is particularly valuable for legacy equipment where manufacturer support has ended or for custom applications requiring unique component configurations.

Comprehensive Product Portfolio

Our extensive inventory and manufacturing capabilities span the complete spectrum of industrial components and spare parts required across energy sector operations. From microscopic precision bearings to massive structural components, we deliver solutions that keep your operations running smoothly.



Component Categories & Applications

1

Mechanical Transmission

Gears, bearings, shafts, couplings, and drive components engineered for high-torque applications and extreme operating conditions.

2

Hydraulic Systems

Pumps, valves, cylinders, seals, and fluid control components designed for high-pressure environments and corrosive media.

3

Structural Components

Brackets, housings, mounting plates, and custom structural elements fabricated to exact specifications and load requirements.

4

Electrical Enclosures

Junction boxes, control panels, conduit fittings, and protective housings meeting hazardous area classifications.



Specialized Equipment & Tooling

Industrial Cutting Tools

Our comprehensive selection of cutting tools includes precision drill bits, end mills, reamers, taps, and specialized cutting inserts designed for metalworking applications in energy sector manufacturing and maintenance operations.

- Carbide and high-speed steel tooling
- Custom tool grinding and sharpening services
- Coolant and lubrication systems
- Tool holders and collet systems

Measurement & Inspection

Quality assurance is paramount in critical energy applications. We supply and support advanced measurement equipment including micrometers, calipers, gauge blocks, and coordinate measuring machines (CMM) for dimensional verification.

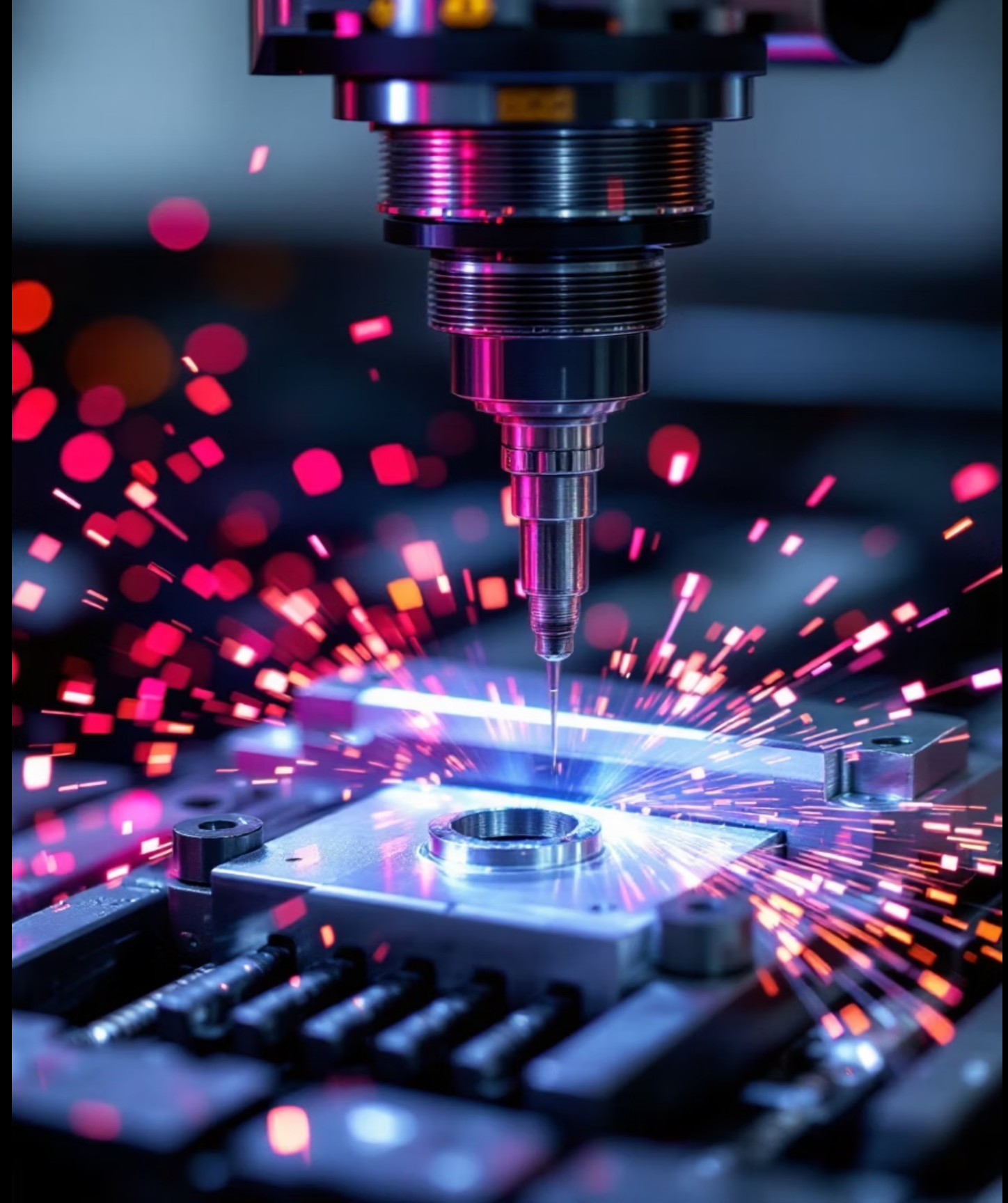
- Precision measuring instruments
- Non-destructive testing equipment
- Calibration services
- Quality documentation systems



It would be our honor to have your brand in our Hall of Fame

We proudly do all our best to be maintain authorized partnerships with the world's leading manufacturers of industrial equipment, components, and spare parts. These strategic relationships ensure access to genuine OEM parts, technical support, and warranty coverage for critical applications across the energy sector. Our brand portfolio represents decades of engineering excellence and proven reliability in the harshest operating environments.

We Try to become an authorized distributor and service partner, to be a bridge the gap between manufacturers and end users, providing local support, technical expertise, and rapid response capabilities. Whether you need a critical replacement part for downtime mitigation or bulk procurement for planned maintenance, our brand relationships ensure authenticity, quality, and performance. We aim to earn the honor of collaborating with the following brands in the not-too-distant future by working hard and proving our capabilities and skills in global markets.



Our Service Commitment



Needs Assessment

We analyze your requirements, operating conditions, and specifications to identify optimal solutions.



Engineering Support

Our technical team provides design assistance, material selection, and performance optimization recommendations.



Precision Manufacturing

State-of-the-art CNC machining and quality control ensure components meet exact specifications.



Logistics & Delivery

Global shipping capabilities and expedited service options minimize lead times and support emergency requirements.

Our comprehensive service approach extends beyond simply supplying parts. We act as your strategic partner in equipment maintenance, reliability improvement, and operational optimization. From initial consultation through post-delivery support, our team brings decades of combined experience in energy sector applications to every project. We understand that downtime costs money, and our processes are designed to minimize disruption while maximizing quality and value.

Why Choose Global CNC Services

50+

Years Combined Experience

Our engineering and technical teams bring decades of expertise in energy sector applications and precision manufacturing.

1000+

Components in Inventory

Extensive stock of common parts and materials ensures rapid fulfillment for urgent requirements and planned maintenance.

24/7

Technical Support

Round-the-clock availability for emergency orders, technical consultation, and critical application support.

99.8%

Quality Assurance Rate

Rigorous inspection protocols and ISO-certified processes ensure consistent, reliable component performance.

Industry Certifications

- ISO 9001:2015 Quality Management
- API Specification Q1 & Q2
- ASME Section VIII Pressure Vessels
- AWS D1.1 Structural Welding
- NACE Corrosion Specialist Certification

Core Capabilities

- Emergency 24-hour manufacturing
- Global shipping and logistics
- Vendor-managed inventory programs
- Obsolescence management solutions
- Custom engineering and design services

Connect With Us Today

Get Expert Support for Your Next Project

Whether you need a single replacement component or a comprehensive spare parts solution, our team is ready to assist. Contact us today to discuss your requirements and discover how Global CNC Services can enhance your operational reliability.



Email Inquiries

sales@tech-land.Shop



Direct Line

+971 50 5369777



Follow Our Updates

[Facebook](#) | [Instagram](#) | [TikTok](#) | [Twitter](#)

© 2025 Global CNC Services. All rights reserved. Delivering precision engineering solutions to the energy sector worldwide.

