

A group of children are playing in a wooded area. They are standing on and jumping between several large tree stumps and old tires scattered on the grass. The background is filled with dense green trees and foliage, with sunlight filtering through the leaves.

BEACON HILL
CHRISTIAN ACADEMY

GENERATION RISING

GROUNDED IN CHRIST.
BUILDING FOR THE FUTURE.

A FUNDRAISING CAMPAIGN



WHAT IS GENERATION RISING?

Generation Rising is a commitment to raising the necessary funds to further establish and continue the work started at Beacon Hill Christian Academy in Stouffville, ON. With founders collectively having over 45 years of experience creating, delivering and supporting Christian education, Beacon Hill opened her doors in 2023 as a new Christian school, meeting the increasing need for solid, biblical teaching in this local area

WHO WE ARE AND WHY IT MATTERS

Beacon Hill endeavors to equip children for service in Christ's Kingdom in an ever-changing world, according to the image of the unchanging person of Jesus Christ

We are committed to working with Christian families as a school community raising the next generation of believers. We've begun this work of offering reformed Christian education in York Region (just North of Toronto). Since families are responding, now is the time to stand behind the next generation





WHO WE ARE AND WHY IT MATTERS II

We live up to these values and accomplish our education goals, first through God’s goodness, and secondly by delivering a curriculum that bases itself on the Reformed Christian faith





WHAT WE'RE DOING AND WHY

The vision of Beacon Hill Christian Academy came to a realization after years of planning, work, and prayer. The 2023-24 school year began offering grades K-8 and has already reached the goal of having students in every grade. Since then, we've also stepped forward in faith adding Gr 9 last year and Gr 10 this year, but we aren't stopping there.

We are working towards becoming an inspected K-12 school with a full complement of programs and staff.

We identified a Christian high school gap in this area and we're on track to fill it, supporting Christian parents in their God-given responsibility to teach their children

*That the next generation might know of the glorious deeds
of the Lord*

THE PLANS →



Phase 1

(Yellow Area) Need for Fall 2026 Time frame:
Fall 2026 completion Cost: **\$2,000,000**

- Build 3 new classrooms
- Move and upgrade kitchen
- Upgrade staffroom
- Move and upgrade all bathrooms
- Move Electrical room



Phase 2

(Purple Area) Time frame: next 3-5 years
Cost: **\$1,000,000**

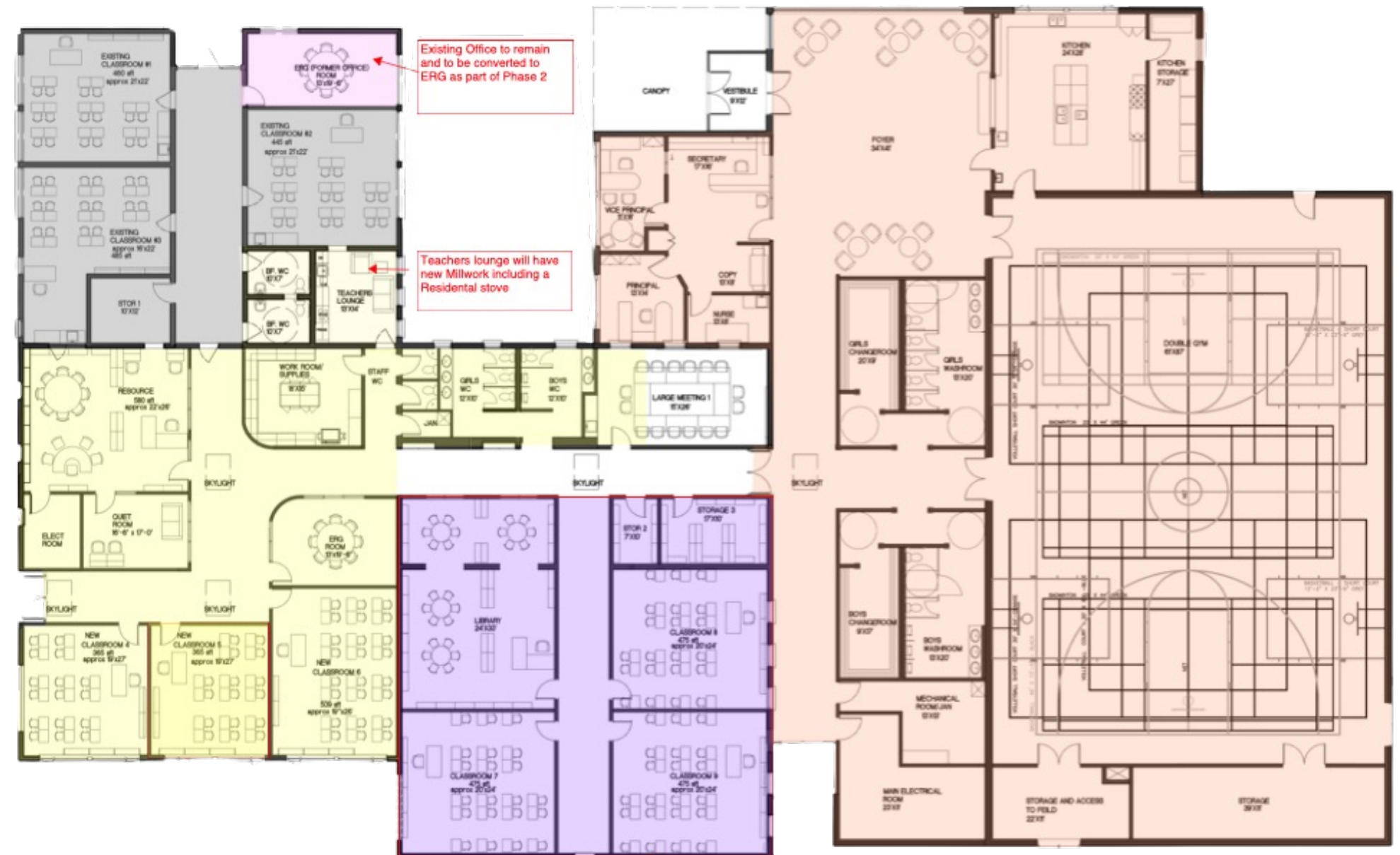
- Build 3 new classrooms
 - 1 new resource room
 - Storage room
 - Library



Phase 3

(Orange Area) Time frame: 6-10 years
Cost: **\$3-6 million**

- Build 13,000sqft addition
 - Gymnasium
 - Change rooms/washroom
 - New front entrance
 - Principal and admin office
 - New large kitchen



WHAT WE NEED

- Begin with prayer. We recognize this work is the Lord's and we commit it to Him. Pray that He establishes the work at Beacon Hill Christian Academy.
- Donors. Can you join this movement? You choose the amount and how you gift it. No gift is too small.





WHAT WE WILL GAIN

- Ability to increase enrolment (We are quickly growing! We see ourselves at 100+ students in the next few years and our facilities are at capacity!)
- Additional classroom space
- Expanded washroom facilities (with new septic tank)
- Safer entrance & student drop-off zone
- Mortgage-free stability → keeps tuition affordable

*will you help us
continue this work?*

DONATION OPPORTUNITIES

USA donor portal ♦ CSS partners ♦ E-transfer ♦ Cash/cheque ♦ Pledge forms

Flexible giving:

Monthly pledges, One-time gifts, Year-end contributions

**GENERATIONRISING@
BEACONHILLCA.ORG**

We've started supporting the rise of the
next generation of Christ's image bearers



*will you help us
continue this work?*

GIFTS THAT IMPACT NOW

Your gift will support the ongoing and essential operational needs of Beacon Hill Christian Academy and help us continue to touch the lives of so many



*will you help us
continue this work?*

GIFTS THAT LEAVE A LEGACY

Giving a **legacy gift** offers you an opportunity to express your financial stewardship and provides Beacon Hill with ongoing support. **Legacy giving** requires a different type of planning rather than regular annual giving. A **legacy gift** is created from the financial assets we accumulate over our lives. There are many types of **legacy gifts**, each type having its own benefits to you, the donor, and to Beacon Hill as the charity



- ✓ Through a unique partnership with **Christian Stewardship Services** you can donate to Beacon Hill anonymously
- ✓ CSS can **assist** you with many effective giving options, let CSS help you make a difference at Beacon Hill
- ✓ **Contact** CSS at: Call: 1.800.267.8890 x 217
info@CSservices.ca
- ✓ If you happen to be a donor living in the US you can receive a US tax receipt for a gift to Beacon Hill through the services of Barnabas Foundation. Call David @ [888.448.3040](tel:888.448.3040) ext. 113



Student Projected Enrolment

- Expand enrolment from 37 (2024-25) to 75 students in elementary and 25 students in high school by 2030
- Add one new high school grade per year to establish a full JK–12 program by 2027/28 school year
- Targeted outreach to Reformed and conservative evangelical families

Elementary Enrolment Projection

YEAR	2024/25	2025/26 (Current)	2026/27	2027/28	2028/29	2029/30
STUDENTS	37	42	57	63	70	75
FAMILIES	13	18	28	31	34	37

Highschool Enrolment Projection

YEAR	2024/25	2025/26 (Current)	2026/27	2027/28	2028/29	2029/30
STUDENTS	2	2	5	10	15	25
FAMILIES	2	2	3	8	11	15



Staff Recruitment & Development

- Recruit certified Christian teachers aligned with Reformed covenantal theology
- Partner with Christian colleges and seminaries to create a teacher pipeline
- Provide annual professional development in Christian education
- Hire full-time admin by 27/28 school year
- Hire full-time Educational Assistant by 27/28 school year

Elementary Teachers

YEAR	2024/25	2025/26 (Current)	2026/27	2027/28	2028/29	2029/30
TEACHERS	4	4	5	5	5	6

Highschool Teachers

YEAR	2024/25	2025/26 (Current)	2026/27	2027/28	2028/29	2029/30
TEACHERS	1	1	2	2	2	3



A large group of children and adults are posed on a playground structure. The structure features a red slide and a green slide. The children are of various ages, from young children to teenagers. Some are sitting on the slides, while others are standing on the platform. The adults are standing around the children, some on the ground and some on the structure. The background shows a wooden fence and trees.

Through this campaign, Beacon Hill Christian Academy is poised for faithful and measured growth, grounded in God's provision.

This prayerful roadmap expands our ministry of education, strengthens our community, and equips generations of students to live for Christ in an ever-changing world—for generations to come.

 **Soli Deo Gloria** 