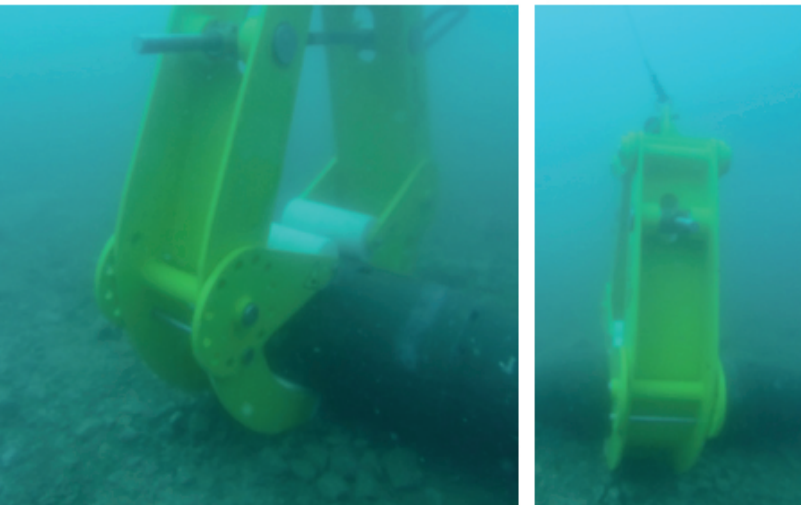




# SURS

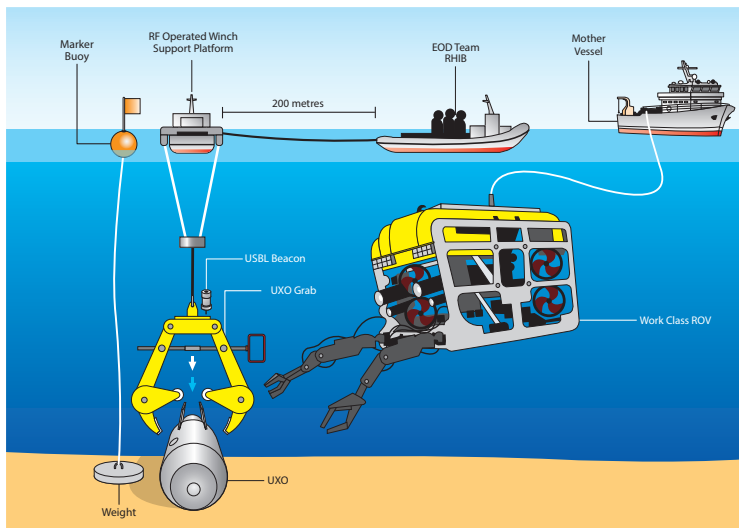
SUBSEA UXO RELOCATION SYSTEM



## SURS Employment

SURS can be employed when relocation is either preferred and/or render safe in-situ is otherwise impractical, due to:

- The presence of fragile local infrastructure, such as cables, pipelines, foundations or archaeology.
- Environmental damage might be caused by local UXO render-safe actions.
- SURS is especially useful when several small UXO are collocated so that they can be gathered together for safe transportation and subsequent render safe action. The system can be operated remotely from a RHIB, surface support platform. The SURS clamp is lowered into place on command from a remotely operated winch, and is then be guided into place via a suitable Remotely Operated Vehicle (ROV) or in shallow water by diver.
- For safety reasons, all SURS relocation operations are carefully planned and conducted during daylight as well as in suitable weather conditions.



## Benefits

- Safety ensured through remote operation
- Quick to deploy
- Clamp fits a wide variety of UXO
- Move UXO to disposal site
- Minimal environmental disturbance

