

Glamping Tent Structure China Co., Ltd

GTS- The Luxury Glamping Resort
Expert



Glamping Dome Tent

Diameter:5m/17ft Height:3.0m/9.5ft
Diameter:6m/20ft Height:3.5m/11ft
Diameter:7m/23ft Height:4.0m/13ft
Diameter:8m/26ft Height:4.7m/15ft

Area:20m²/215sq ft
Area:28m²/300sq ft
Area:38m²/410sq ft
Area:50m²/540sq ft



Dome Size For Glamping



5M

1-2 persons



6M

1-2 persons
With bathroom



7M

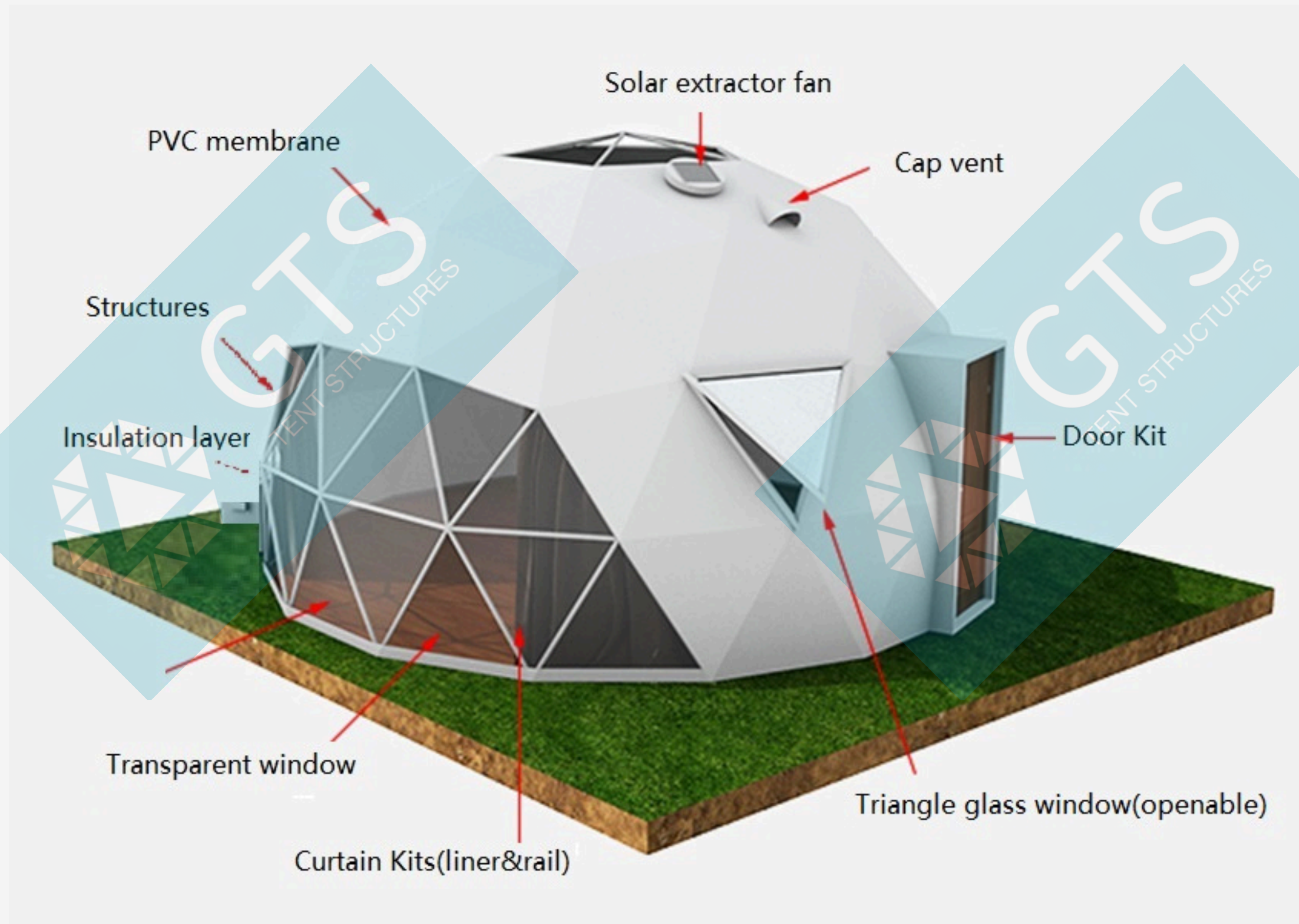
2 adults with 1 kid
With bathroom



8M

2 adults with 1-2 kids
With bathroom

Features



Structural features

Glamping domes are elegant, durable, and generally easy to assemble with sphere-like structures made up of a network of triangles that provide a self-balancing structural framework with few materials.

Product Advantage

- Super wind load and snow load
- Efficient and cost-effective
- Quick Assemble
- Transport and erect anywhere.

Materials

Struts:

- High Quality Galvanized Steel tubes
- Size: 27x2mm
- Surface: White or others colors



White tubes



Black tubes

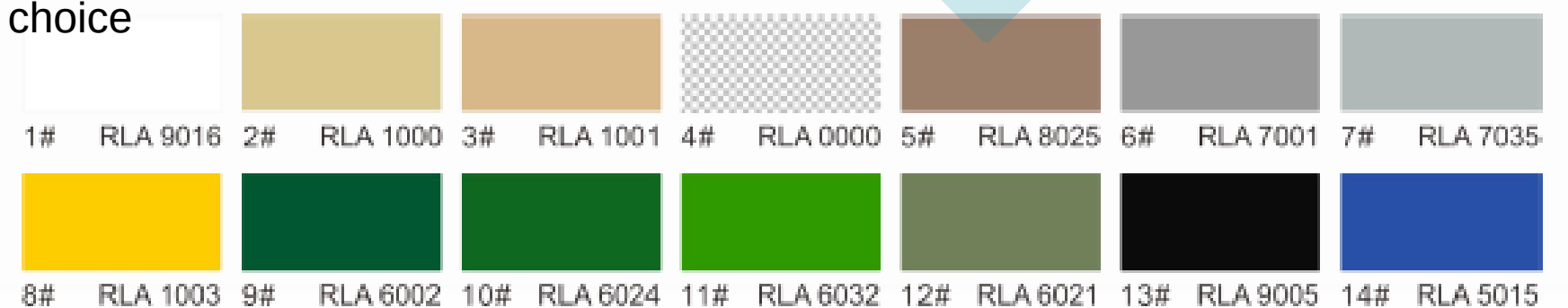


Connection

Fabric:

- High Quality Fabric
- Outer cover: 850g/sqm, double coated pvc fabric, only comes from the leading manufacturer of technical textiles
- Insulation Liner: 500g/sqm, thermal

Fabric colors for your choice



(#1,2,11 are most popular)

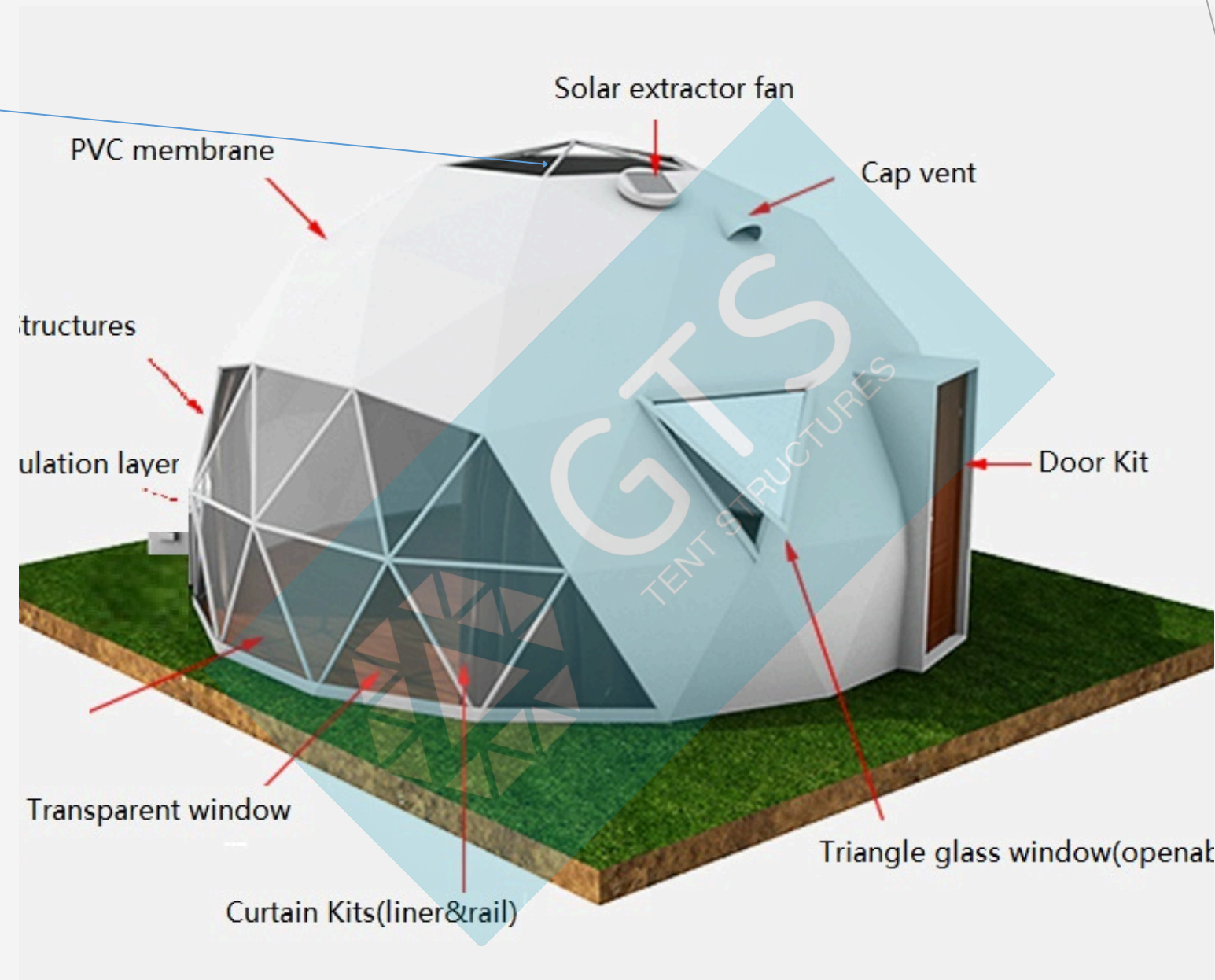
Exterior Design

02 SKY LIGHT

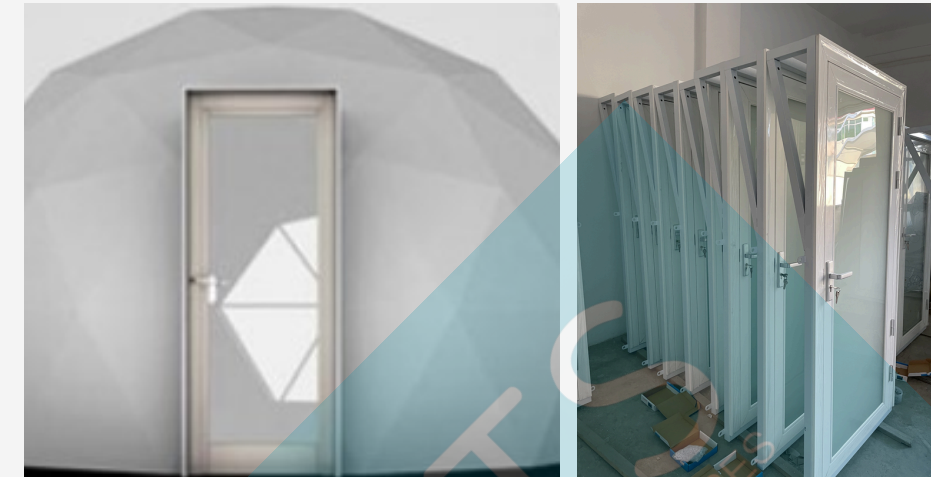


- Clear PVC with auto roof
- Skylight Window is the highlight of dome design letting you enjoy natural sunlight and starry night

- Other option:
Transparent round window(welded onto outer shell for light entry)



01 DOOR KITS



- Size: H2000 W950m
- Frame: aluminum
- Panel : 5 + 9A +5mm insulating glass

Features

- Door frame and awning;
- Door opens outwards

Optional:

MAGNETIC MOSQUITO MESH DOOR
The screen automatically opens and closes offering hands-free entry and exit for both you and your pets.

Exterior Design

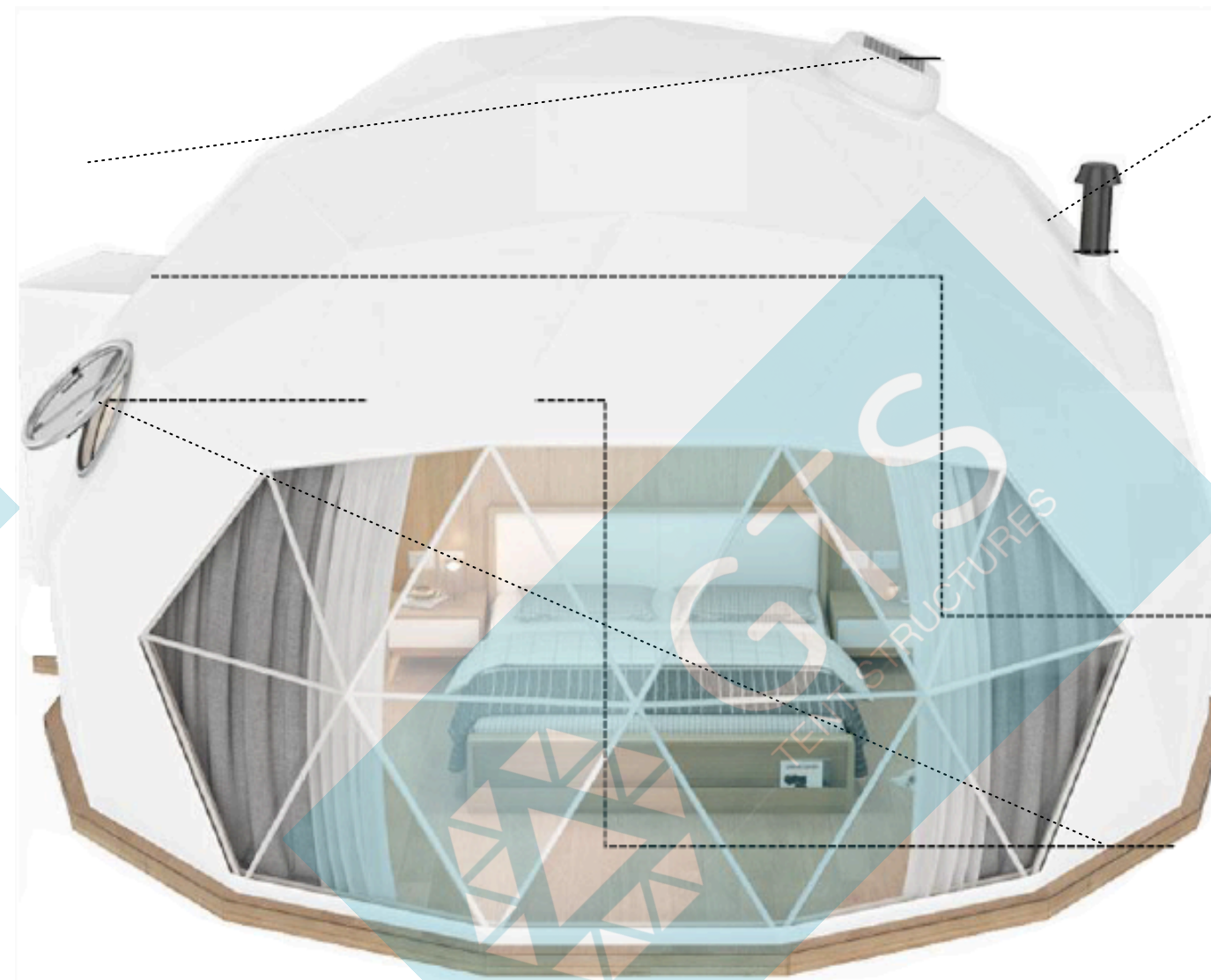
05 SOLAR EXTRACTOR FAN



Solar Extractor Fan ventilation system offers a sustainable cooling

system to extract warm air from top of dome.

- Electric Current Type: DC / AC
- Adapter Type: Customizable by country
- N/W: 14KGS
- Panel size: 365x365x25mm
- Aluminum Fan size: 14 inches



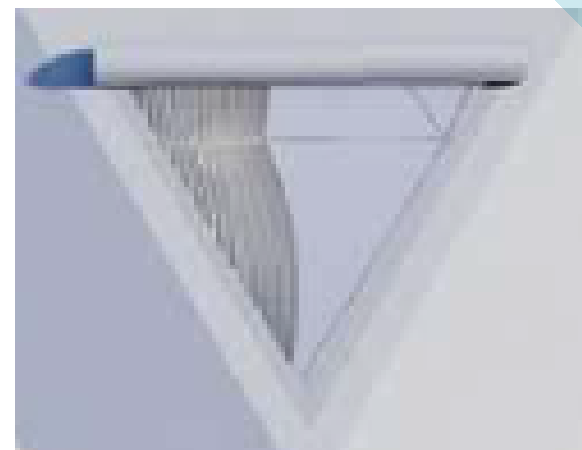
03 STOVE JACK

- For 06 inch stove pipe
- Steel frame.
- position customized



04 OPENABLE ROUND GLASS WINDOW

- Round shape , diameter 500mm
- Aluminum alloy frame with tempered glass.
- The position can be customized
- Other options:
 1. Triangle vent : Two-layer with rolling-up PVC fabric exterior and heavy duty fly screen interior;
 2. Cap vent : a triangle PVC fabric cover which allows both air circulation and rain protection



Accessories



PVC CLEAR WINDOW
(CANNOT OPEN)



PVC WINDOW
(WITH BUG-PROOF SCREEN)



ROUND GLASS WINDOW



TRIANGLE GLASS WINDOW



SKYLIGHT & AUTO SUN ROOF



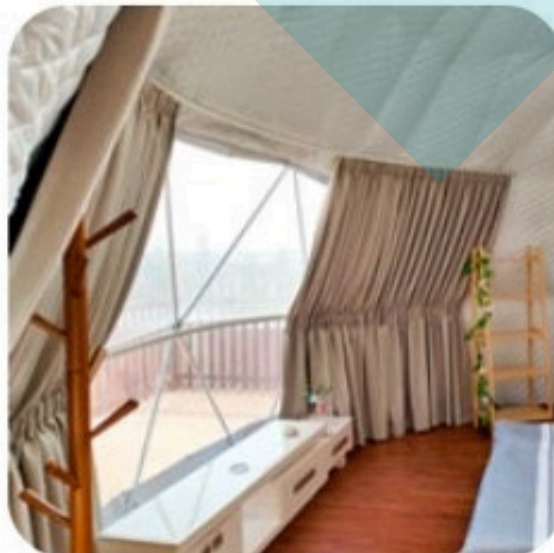
INSULATION LINER



GLASS DOOR



SOLAR EXHAUST FAN



CURTAIN AND RAIL



CHIMNEY



FIREPLACE / STOVE KIT



BATHROOM MODULE

Layout-Single Dome



5M Dome Floor Plan



6M Dome Floor Plan



7M Dome Floor Plan



8M Dome Floor Plan

Layout- Domes Connection



Exterior Design

Bathroom Module

Wooden veneer aluminum wall*1
Waterproof floor*1 Ceiling*1
Sink*1 Shower*1
Towel Rack*1 Hand Shower Kit*1

Wooden Floor System

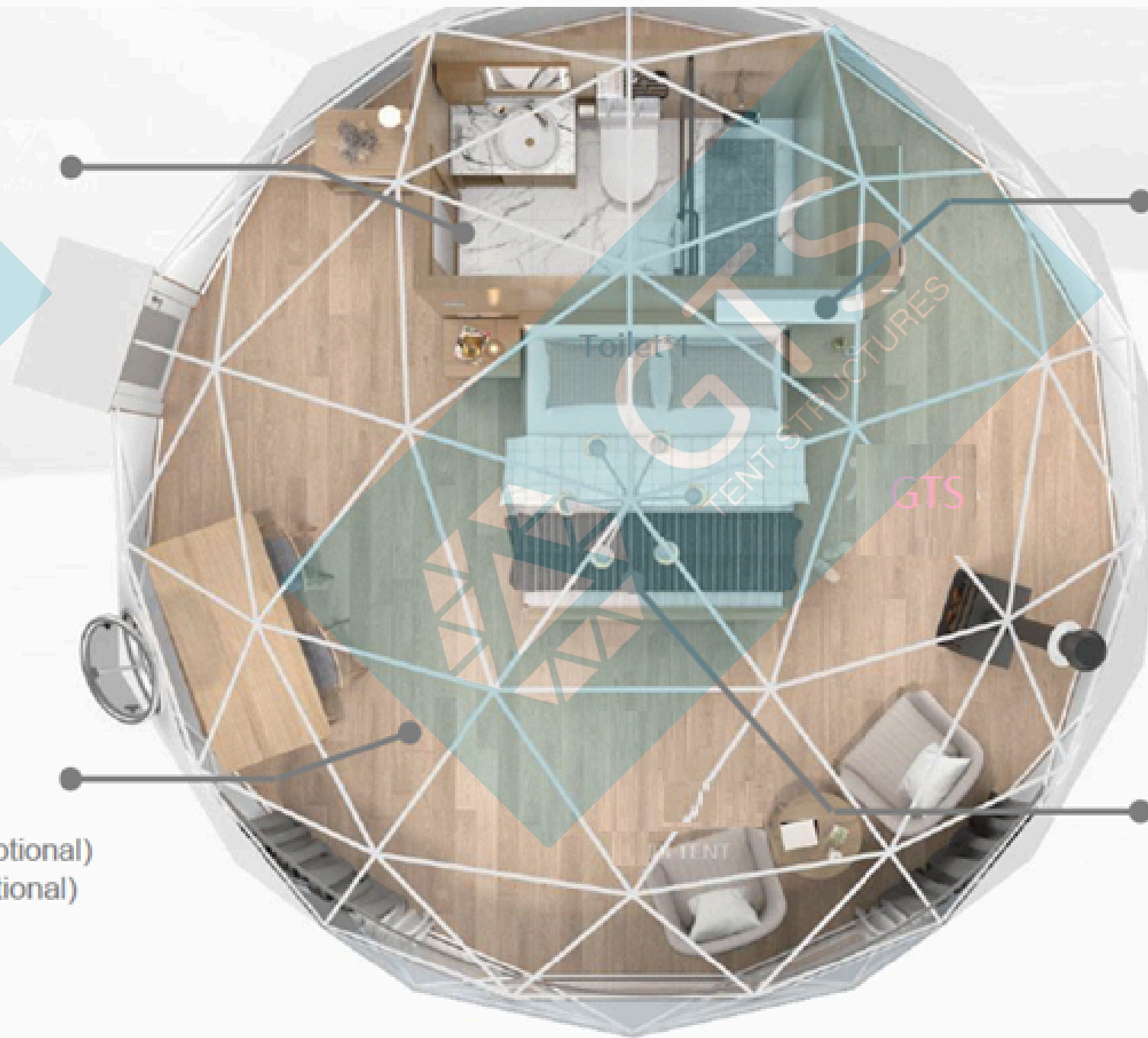
Wood-Plastic Composites flooring
Luxury multi-layer solid wood flooring (Optional)
Radiant Floor Heating wood flooring (Optional)

Furniture

Curtain*1 Solid wood bed*1
Mattress *1 Bed stand*2
Wardrobe *1 Side Stand*1
Occasional table*1 Occasional chair*2
Dinner chair (Optional)
Fireplace (Optional)

Home Appliances

Bedroom chandelier*1 Indoor wall light*1
2P Air-Con*1 Electric Kettle*1
Hanging hair dryer *1
Skylight with electric sun-shed (Optional)



Camping site



Camping site



Camping site



Camping site





Thank you for your watching