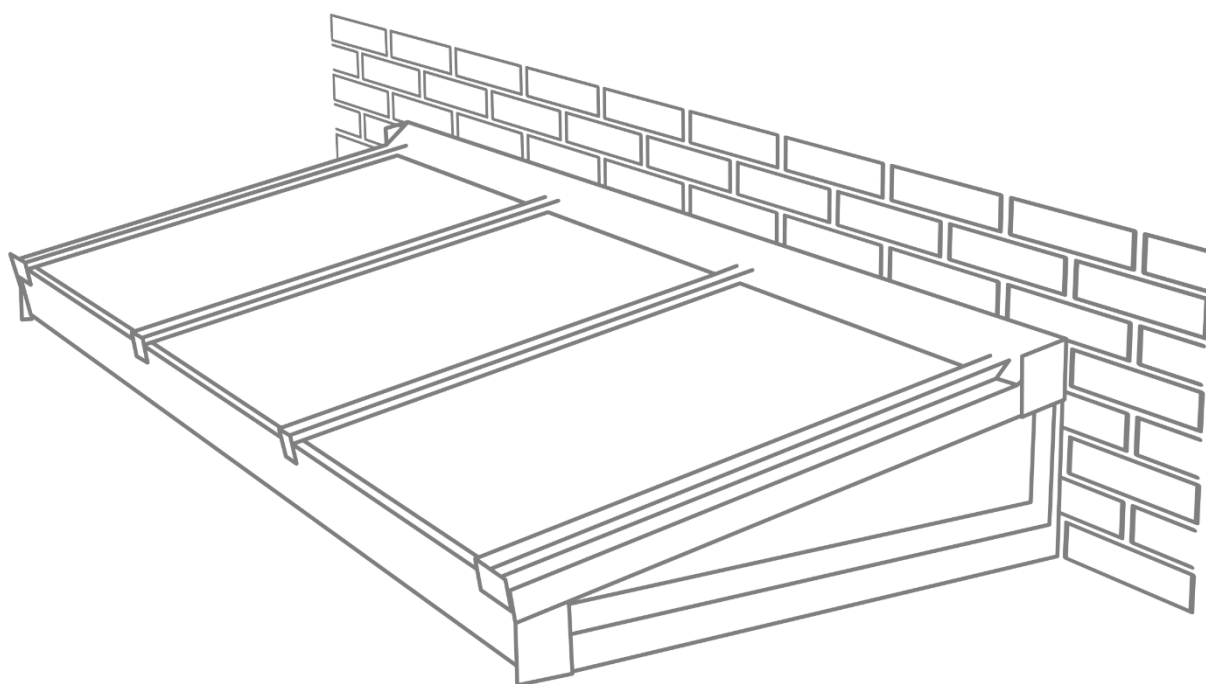




ASSEMBLY MANUAL

SKYLIGHT PENT ROOF

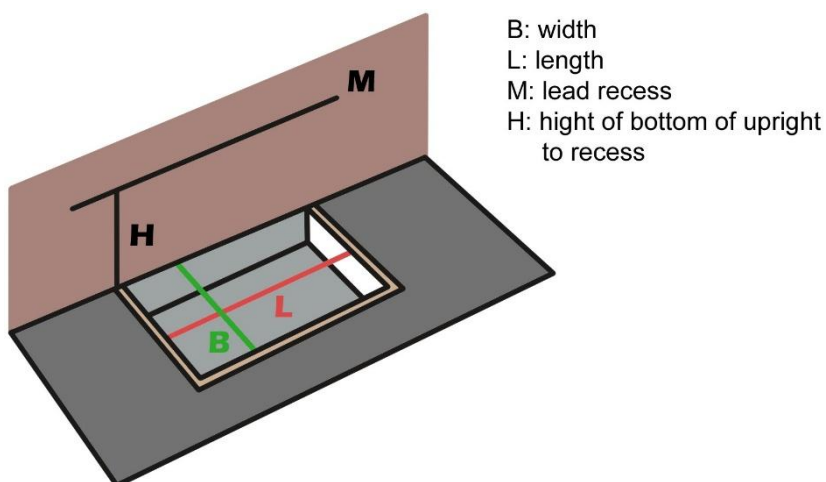


1.

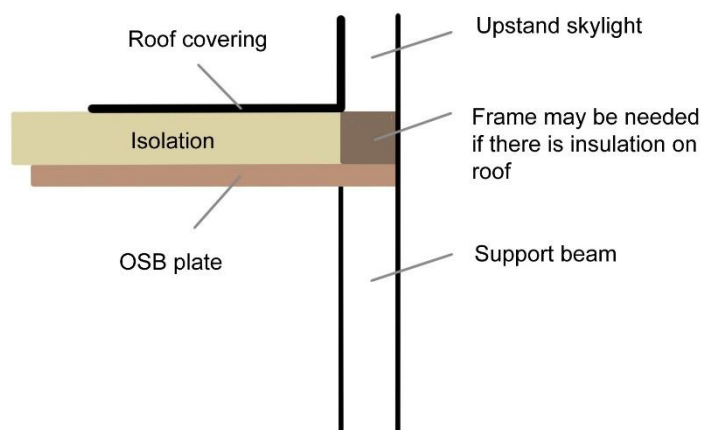
Drawing 1: Make a recess in the roof where B = the ordered width and L = the ordered length of the skylight. It is recommended to provide the skylight with lead finishing on the wall. For this, make a recess where $[M = L + 340 \text{ mm}]$ and $[H = \text{the total height of the skylight} + 50 \text{ to } 100 \text{ mm}]$.

Drawing 2 and 3: If you place insulation on the roof, you must provide a frame of 30 mm wide. The height of this frame must be equal to the thickness of the insulation, so you maintain the ideal height of the upstand.

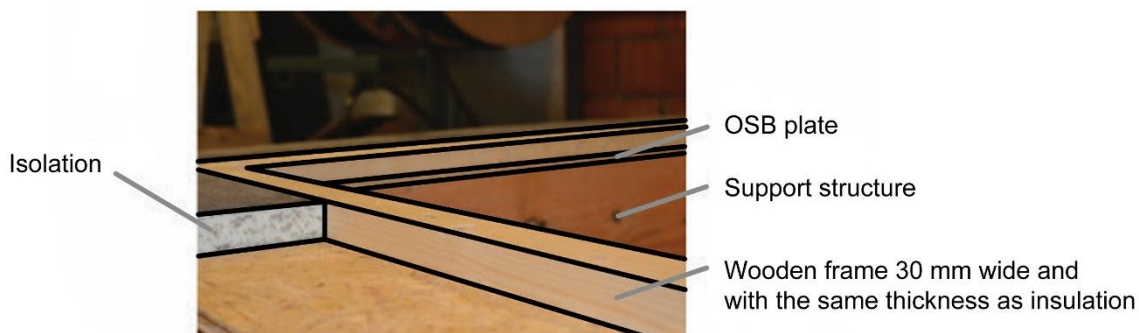
1.



2.



3.



2.

Place the skylight over the roof opening and fix it to the wall with the screws and plugs provided. Fix the upstand to the roof (screws not included).



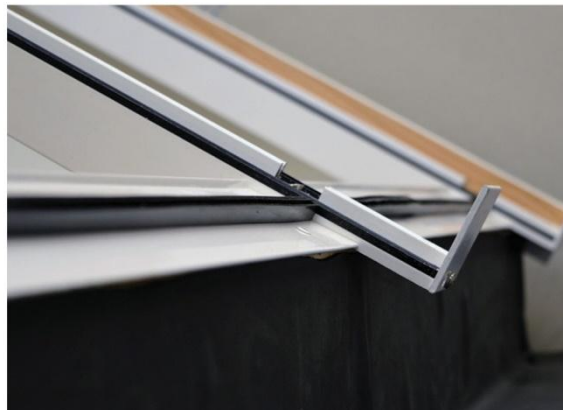
3.

Remove the 6 cover plates and the 3 cover profiles around the wooden upstand.



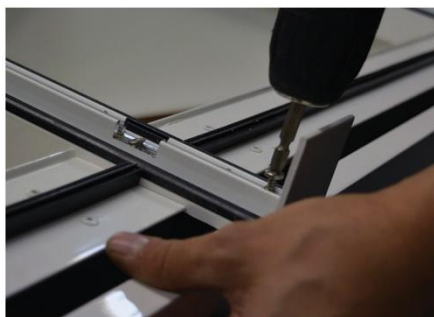
4.

Glue the roof covering as high as possible on the wooden upstand.



5.

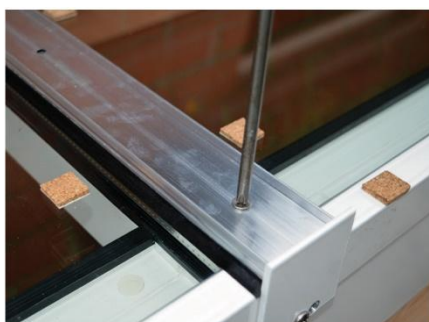
Attach the cover profiles on the long side. Then the short side using the cover plates. Place the plastic caps over the screws of the cover plates.



6.

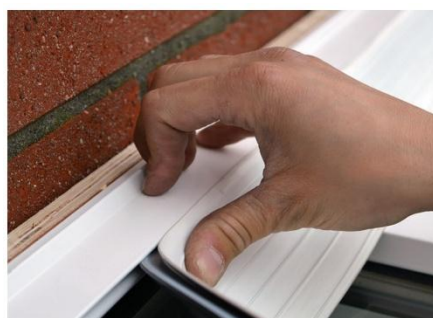
Carefully place the glass with the laminated side on the inside and the coating on the outside in the compartments. The profile on the glass must sit over the cover profile at the bottom. Make sure that all rubbers remain in place.

Screw the pressure slats into the ledge of the roof beams. Tap the cover profiles on (possibly using a wooden block and hammer). **Wear gloves to prevent cuts.**



7.

Click the rubber into the wall profile at the top and cut a couple of cm, left and right of the pressure slats, so that the rubber stretches on the glass.



8.

Seal the skylight further with silicone on the wall and the cover profiles.



9.

Let the lead protrude at least 10 cm on the left and right and rest on the wall profile against the rubber.

