

# The **Clevedon** Show

*Formerly - Clevedon Flower Show*

**Saturday 23<sup>rd</sup> August  
& Sunday 24<sup>th</sup> August**

**The Salthouse Fields  
Sea Front, Clevedon  
BS21 7TU**

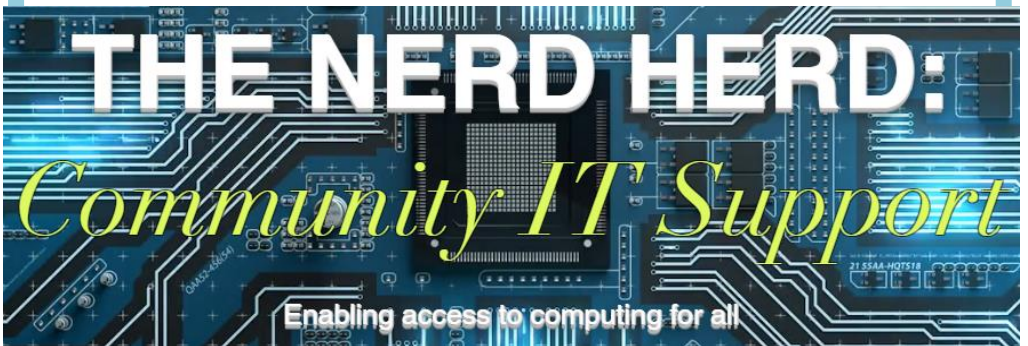
**2025 SCHEDULE**



**£1**



# The Clevedon Show's Chosen Charity For 2025



The Nerd Herd is a Community Non- Profit Organisation, dedicated To undertaking charitable activities in Clevedon, North Somerset and surrounding regions, consisting of a team of retired IT experts, graphic and Web designers, managed by two experts in their field with over 50 years of industry experience, Offering their skills to help others.

# The Clevedon Show

## SCHEDULE OF CLASSES

### Show Opening Times

**Saturday 23<sup>rd</sup> August: 12 noon – 6pm**

**Sunday 24<sup>th</sup> August: 9am – 5pm**

**Tuesday 19<sup>th</sup> – 9pm: Closing Date for Entry Forms**

**Friday 22<sup>nd</sup> - 5pm until 8am (Saturday): Staging of Exhibits**

**Saturday 23<sup>rd</sup> - 8am: Judging Commences –**  
*ALL exhibitors must leave the Marquee*

### Sunday 24<sup>th</sup> :

**Prize Money can be collected from Admin - 1pm – 3.30pm**

**Presentation of Trophies - 4pm**

**Grand Draw - 4:30pm**

**All exhibits must be removed - 5pm – 5.30pm**

### Entrance Prices

**Adults: £7**

**Accompanied Children (Under 16): FREE**

**Senior Citizens (65+) & Children: £6**

**Carers: FREE**

### TWO-DAY Prices –

**Adults: £12**

**Senior Citizens & Children: £10**

# The Clevedon Show Committee

<b>Chairman</b>	<b>Andy Stephens</b> <a href="mailto:cfs.chair1@gmail.com">cfs.chair1@gmail.com</a>	07769 341494
<b>Vice Chair, Logistics &amp; Classic Car Coordinator</b>	<b>Chris Adams</b> <a href="mailto:chrisa873@gmail.com">chrisa873@gmail.com</a>	01275 873166
<b>Show Secretary &amp; Sponsorship</b>	<b>Sarah Adams</b> <a href="mailto:cfs.showsecretary@gmail.com">cfs.showsecretary@gmail.com</a>	01275 873166 07749 267726
<b>Deputy Show Secretary</b>	<b>Suzanne Howard</b> <a href="mailto:tawnysuze71@gmail.com">tawnysuze71@gmail.com</a>	01275 541122
<b>Treasurer</b>	<b>Sophie Hunt</b> <a href="mailto:clevedonflowershowtreasurer@gmail.com">clevedonflowershowtreasurer@gmail.com</a>	01275 265382
<b>Trophy Officer &amp; Chief Steward</b>	<b>David Withers</b> <a href="mailto:djrwithers@gmail.com">djrwithers@gmail.com</a>	07943 803679
<b>Trade Secretary</b>	<b>Sue Day</b> <a href="mailto:tradesecretary@gmail.com">tradesecretary@gmail.com</a>	01275 856325 07834 039509
<b>Entertainment</b>	<b>Martin Day</b>	07792 445629
<b>Refreshments</b>	<b>Jane Stephens Hilary Tinkling Leanne Tinkling</b>	
<b>Social Media</b>	<b>Sue Day</b>	
<b>Website &amp; Database</b>	<b>Sarah Lewis</b>	
<b>Tombola</b>	<b>Sue Glen</b>	
<b>Grand Draw</b>	<b>Liz Fern</b>	
<b>Social Events</b>	<b>Leanne Tinkling Hilary Tinkling</b>	



## **RULES & REGULATIONS**

The Clevedon Show welcomes all exhibitors to enter the competition classes and particularly encourages beginners and young people. Some classes are restricted by age groups, such as Senior Citizens, or Childrens and others are for novices. Please make sure that you enter your exhibit in the correct class and follow all special instructions very carefully to avoid being disqualified as “not according to schedule”.

1. You must tell us which classes you wish to enter on or before the closing date:

**9pm on Tuesday 19<sup>th</sup> August 2025**

Although the Show Secretary will use their discretion on accepting late entries. Please complete the Entry Form at the back of this Schedule (+ fees – BACS details included on the Entry Form) and deliver to: **Show Secretary:  
21 Westerleigh Road, Clevedon, North Somerset, BS21 7UR**

Or via our website: [www.clevedonshow.uk](http://www.clevedonshow.uk)

(previously: [www.clevedonflowershow.uk](http://www.clevedonflowershow.uk))– Fees must be paid by BACS. All Entry Fees are listed directly below the classes and entry fees will be forfeited for any entries not staged.

2. **Don't Forget: Anyone staging 10+ entries will receive one FREE Show Entry Ticket, which must be handed in at the gate on entry to the Show.**
3. Exhibits can be staged **from 5pm on Friday prior to the Show, right through to 8am on the Saturday of the Show**, at which time the marquee will be cleared for judging.
4. You must collect your **entry (class) cards** from the main entrance of the exhibition marquee **before** staging your exhibit - they will be inside a small brown envelope with your name written on the outside. All class numbers are marked clearly on the exhibit tables.
5. All judging, where applicable, will be in accordance with the Rules of the Societies to which The Clevedon Show is affiliated. The Judges' decisions are final, they have the power to withhold prizes if the exhibits, in their opinion, are not of sufficient merit.
6. No competitor will be allowed to win more than one prize in any one Class.
7. Tabling is provided. All other requirements are the responsibility of the exhibitor. Exhibits must be of a size that can be safely staged on the tables. Any exhibit may be refused at the Show Secretary's discretion if it is deemed too heavy or unstable.
8. Competitors are asked to name cultivars (varieties) where possible in order to create interest for visitors.

9. The committee will take all reasonable care of the exhibits but will not be responsible for any loss or damage from any cause whatsoever. They will not be responsible for any accident arising from any cause whatsoever to any person assisting, exhibiting, or visiting the Show, or for any loss or damage howsoever caused to the property of any person.
10. All exhibits in the horticultural classes must have been grown by the exhibitor or owned for at least 90 days prior to the Show.
11. No persons except the Judges, Show Secretary, Chief Steward, or Exhibitor, will be allowed to touch or handle any exhibit once an exhibit has been staged.
12. **Prize Money** - If you have won a 1<sup>st</sup>, 2<sup>nd</sup> or 3<sup>rd</sup> prize card, then your prize money can be claimed from **1pm – 3.30pm on the Sunday of the Show from the 'Admin Office'** (top end of the marquee). It can also be claimed from the Treasurer up to a week following the Show. Please contact:- Sophie Hunt: 01275 265382, or Email: [clevedonflowershowtreasurer@gmail.com](mailto:clevedonflowershowtreasurer@gmail.com)  
No claim will be considered after this time.
13. Complaints must be made to the Show Secretary by 4pm on the Saturday of the Show, together with a deposit of £5, which will be forfeited if the complaint is proved groundless. The decision of the Show Secretary will be final. The committee reserves the right to interpret these rules. Matters not provided for will be decided by the committee.
14. The committee reserves the right to inspect any exhibitor's garden / allotment after entries have been made. Any exhibitor refusing to permit a visit will, at the discretion of the committee, forfeit all entry fees paid and be excluded from exhibiting.
15. Winners of all trophies will be required to give surety that these will be **returned to the Trophy Officer, no later - 31<sup>st</sup> July** the following year. All trophies remain the property of The Clevedon Show.
16. **EXHIBITS CANNOT BE REMOVED BEFORE 5pm on the Sunday of the Show, but MUST be removed by 5.30pm**, to permit the clearance of the marquee, which has to be completed very rapidly. All 'Home Economics' Exhibits not collected will be disposed of and any other items remaining unclaimed after 5.30pm will be removed by the committee and held by the Show Secretary for **1 week**. It is the duty of the exhibitor to see that the rightful owner removes exhibits.
17. **Health & Safety** – Exhibitors and Traders are responsible for ensuring that their exhibits comply with Health & Safety regulations.



# GUIDELINES ON SHOWING

## Displays of Flowers, Fruit and/or Vegetables

The display can be composed of

- a single variety or
- more than one variety



Always make certain that all containers are clean. If you cover a table with a cloth, this must match the exhibit, not outshine it. Exhibits should be stable and balanced. Make certain that the exhibit remains within the size stated – any overhanging branches, or foliage etc. will disqualify the exhibit.

**NB.** All Soft Fruits to be shown with stalks and on a plate.

## Dahlias

Exhibits are judged to the 'National Dahlia Society' rules.

All Dahlias should not show the centre of the flower – for example



- Pompons, balls etc. should be perfectly round with the petals turning back under the flower to the stem.
- Decorative should be perfectly rounded & the flower head should face forwards - looking at you in the face.

Dahlias are measured by 'rings', which can be obtained from the Dahlia Society. These rings are placed over the top of the flowers to check its size – if the ring does not pass over the exhibit, it is too big. In this event the exhibit will not be judged and may be marked 'NAS' (Not According to Schedule).

## Chrysanthemums

(Early Flowering) These generally fall into four categories



1. **Incurved varieties** have all the petals turned inwards to the centre of the flower - always check that these petals are all turned upwards and inwards.
2. **Intermediate** have either loosely or closely incurving petal formations.
3. **Reflexed** are the opposite in that all the petals turn outwards and downwards.
4. **Sprays** are a stem with multiple flowers.

Where a class asks for one cultivar (cultivated variety) - these flowers must always be the same. When choosing chrysanthemum cuttings, always check that the variety will be in flower at the time of year you wish to show it. Some varieties do not flower in August.



## Gladioli

These spikes of flowers are asked for by size of floret, for example 100/200 size, 300/400 size and 500 size.

1st digit of code	Description	Width of bottom floret (inches)
1	Miniature	Less than 2½"
2	Small	2½ - 3½"
3	Medium	3½ - 4½"
4	Large	4½ - 5½"
5	Giant	Over 5½"

The gladiolus spike should have a minimum of 12 florets, one-third of which should be fully open, one-third partially open and one-third showing colour. The stem should be straight. Gladioli planted in May can give you flowers through July to the end of August. Planting earlier does not give you better flowers in August, they will just bloom earlier. To carry gladioli to a show, particularly if you have to travel any distance, tie the stem to a cane and lay the flower flat in the car, with all the florets facing upwards.



## Roses

Most schedules ask for two types –

- Hybrid Tea (HT) are a single flower on a single stem (all secondary buds should be removed).
- Cluster flowered (Floribunda) are single stem with a multiple of flowers.

Miniature roses are generally shown in a small container, not necessarily in a vase. All roses can have the outside petals removed if they are discoloured or damaged, but this must be done carefully, to ensure the flower is still perfectly formed.



## Pot Plants

First and foremost, all pot plants should be shown in clean pots.

Always check the size of the pot asked for, earthenware pots are measured from the inside of the top of the pot. Make certain that there are no dead leaves, or flowers on your plant and remove any

that are badly marked. Always water your plant well the day before the show.

Place a saucer under the pot and fill with water after the plant has been staged.

## Fuchsias

There are a number of different types of fuchsias.

- **Single flowered** plants have flowers with four outer petals and four inner petals only.
- **Double flowered** plants have four or more outer petals and more than four inner petals.
- **Tryphilla** plants have bunches of elongated flowers and generally have dark foliage.

Before showing, check for dead/marked flowers.







## Cut Flowers

All Cut flowers should be on a straight stem, with no buds, or drooping petals. The stem must be capable of holding the head of the flower and the head must stand clear of the top of the vase.  
Do not add additional foliage.

## Preserves

All preserves etc. to be shown in clean, standard size glass jars (1lb or the metric equivalent). Jars and lids should have **no proprietary names**. Jams, Jellies and Curds should be filled to brim, to allow for shrinkage. All jars must be labelled, showing date of making and the contents.



**Jams & Jellies** – For the top of the jar use well-fitting wax disc and cellophane, **OR** a new twist top (in which case the wax disc/cellophane is not used).

**Curds** – Must be shown using well-fitting wax disc and cellophane.



**Chutney/ Pickle** – There should be ½ inch head space between the contents and the lid and the jar must be topped with a vinegar proof new lid, i.e. a plastic lined twist lid. **The chutney should also be a minimum of 2 months old.**



## Handicraft Classes

All items should be of the highest standard and should be presented to the best advantage. All items should be appropriate to the project asked for in the schedule. No item should have been exhibited in a previous Clevedon Flower Show. All items should be clean. If possible, knitting should **not** be washed prior to exhibiting.

## Novice

These classes are for people who have **not won a 1<sup>st</sup> prize in that particular class** e.g. if you have won first prize with a dahlia exhibit in the Novice section (or the equivalent 'open' class), you must not enter this novice dahlia class again, but you can enter any other class.



The standard in the novice classes is not expected to be as high as those in the open classes, so it's worthwhile trying to show in these classes for the first few times as a good way to learn. If you are unsure about your exhibit, ask for assistance, as most of the more experienced exhibitors are pleased to help. Always read the wording of the exhibit and remember not to add anything 'for good measure'.



## Floral Craft

An important consideration when exhibiting in a horticultural show is the size restrictions, exceeding these will incur disqualification. The style and design are very much the choice of the exhibitor, but regard should be given to interpreting the title of the class, including suitable flowers and foliage to complement it. Components look best in scale to each other and to the overall size of the design. Special care should be taken when entering a 'foliage

only' class, no flowers, or fruit should be included. All pin holders, supporting mechanics etc. need to be disguised, unless they form a distinctive part of the exhibit. Of prime importance is the quality of the flowers and foliage (this can include garden types), which should not be wilting or have insect damage.



### Photographic Classes

The Judge is looking for an interesting picture as well as one that conforms to the class. For example, if the class is for a photograph of a garden – a picture of a single flower will not qualify. Good composition and originality are important. Photographs of pets etc. should show the animal in the centre of the picture. Views etc. should be clear and the focal point should be obvious.

### **Sustainable alternatives to Floral Foam:**

The Clevedon Show is keen to reduce the environmental impact of the Show and as part of this **we encourage all exhibitors NOT TO USE green or brown 'Oasis'** to stage your exhibits, where at all possible and instead use 'Fibre Floral /Agra Wool' or any other 'non-oasis' alternatives in all classes.

Environmentally Friendly alternatives can be found on various websites:

[www.Flowermag.com/guide-to-floral-foam-alternatives/](http://www.Flowermag.com/guide-to-floral-foam-alternatives/)

Example of some alternatives you can use are:

Chicken wire; Flower Frogs; Gravel, Rocks, Pebbles; Willow, Rattan, Pliable Reeds; Wood Wool; Straw; Water Vials; Floral Clay, Moss (if sustainably sourced)

### **Entrance Fees**

Type	Fee
<a href="#">Championship Class</a>	<b>£2.50</b>
* <a href="#">Special Class</a>	<b>£1.50</b>
<a href="#">All Other Classes</a>	<b>50p</b>
<a href="#">Children's Classes</a>	<b>50p</b>

### **Points**

Type	1 <sup>st</sup> Prize	2 <sup>nd</sup> Prize	3 <sup>rd</sup> Prize
<a href="#">Championship Class</a>	<b>10 Points</b>	<b>8 Points</b>	<b>6 Points</b>
* <a href="#">Special Class</a>	<b>8 Points</b>	<b>6 Points</b>	<b>4 Points</b>
<a href="#">All Other Classes</a>	<b>6 Points</b>	<b>4 Points</b>	<b>2 Points</b>
<a href="#">Children's Classes</a>			

### **Prize Money**

Type	1 <sup>st</sup> Prize	2 <sup>nd</sup> Prize	3 <sup>rd</sup> Prize
<a href="#">Championship Class</a>	<b>£25</b>	<b>£15</b>	<b>£10</b>
* <a href="#">Special Class</a>	<b>£10</b>	<b>£5</b>	<b>£2.50</b>
<a href="#">All Other Classes</a>	<b>£3</b>	<b>£2</b>	<b>£1</b>
<a href="#">Children's Classes</a>	<b>£1.50</b>	<b>£1</b>	<b>50p</b>

The Clevedon Show is affiliated with:



[www.rhs.org.uk](http://www.rhs.org.uk)



[www.britglad.com](http://www.britglad.com)



[www.nvsuk.org.uk](http://www.nvsuk.org.uk)



[www.chrysanthemum-ncs.org](http://www.chrysanthemum-ncs.org)



[www.dahlia-nds.co.uk](http://www.dahlia-nds.co.uk)



[www.nvsuk.org.uk](http://www.nvsuk.org.uk)



[www.therosesociety.org.uk](http://www.therosesociety.org.uk)

## A Date For Your Diary ...

**Make sure to come along to our**

# **Christmas Fair**

## **Saturday 22<sup>nd</sup> November**

**At our NEW VENUE:**

### **Christchurch,**

### **Chapel Hill, BS21 7LL**

## SPECIAL TROPHIES

**THE CHAMPION OF CHAMPIONS TROPHY** – most points in Championship Classes

**THE CLERICAL & MEDICAL TROPHY** – best exhibit in the Horticultural Classes

**THE CHELSEA BOWL** – exhibitor gaining most points throughout the Show

**THE N.D.S. SILVER MEDAL** – best exhibit of Dahlias in the Show

**THE N.D.S. BRONZE MEDAL** – best bloom or single vase of Dahlias in the Show

**THE N.C.S. SILVER MEDAL** – best exhibit of Chrysanthemums in the Show

**THE ROSE SOCIETY BRONZE MEDAL** – best exhibit of Roses in the Show

**THE B.G.S. SILVER MEDAL** – best exhibit of Gladiolus in the Show

**THE N.V.S. MEDAL** – best Vegetable exhibit in the Show

**THE DAPAMIA TROPHY** – most points won in the Show by a lady

**THE RHS BANKSIAN MEDAL** – most prize money in Horticultural classes (Previous two years winners are excluded) **2023 – Lakin Earl & 2024 – Neal Hatch**

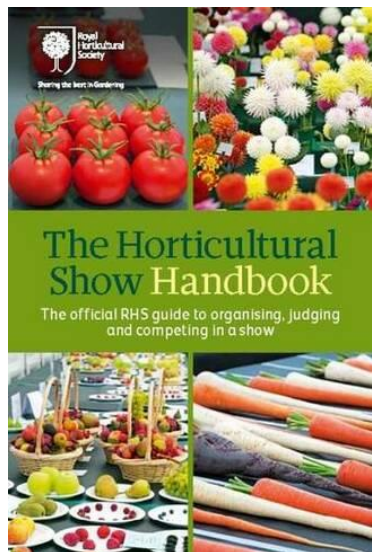
### ADDITIONAL CHILDREN'S TROPHIES:

**THE JON SULLEY MEMORIAL TROPHY** - best photographic entry in all the children's classes - age will be taken into consideration

**THE H. HATCH TROPHY** - best garden scene in all the children's classes - age to be taken into consideration

**THE JEANETTE BELL TROPHY** - best picture in all the children's classes - age to be taken into consideration

If you are entering the horticultural classes, we recommend that you read the RHS handbook which gives excellent advice about preparing and staging your exhibits. It is available through the RHS website or from other online retailers



# SHOW CLASSES

## DAHLIA

**DC**

### THE DAHLIA CHAMPIONSHIP

The Dahlia Championship Class comprises any **2 choices** taken from A to K below: -

**One distinct variety per vase, no repeat categories.**

A. Three Blooms - Giant/Semi Cactus/Decorative or Large/Semi Cactus/Decorative

*(NOTE: Group A - may be exhibited in individual vases at the Exhibitors discretion)*

B. Three Blooms - Medium Cactus/Semi Cactus

C. Three Blooms - Medium Decorative

D. Three Blooms - Small Cactus/Semi Cactus

E. Three Blooms - Small Decorative

F. Three Blooms - Small Ball

G. Three Blooms - Miniature Cactus/Semi Cactus

H. Three Blooms - Miniature Decorative

I. Three Blooms - Miniature Ball

J. Three Blooms - Large Pompons

K. Three Blooms - Pompons (max 55mm)

**Entrance Fee: £2.50**

**Points: 10 : 8 : 6**

**Prize Money: £25 / £15 / £10**

### THE STEPHEN TRESEDER TROPHY - best exhibit in Class DC

**D1**

One vase - one bloom - large /giant - decorative, cactus, semi-cactus

**D2**

One vase - three blooms - medium - cactus **or** semi cactus

**D3**

One vase - three blooms - medium - decorative

**D4**

One vase - three blooms - small or miniature - cactus **or** semi cactus

**D5**

One vase - three blooms - small or miniature - decorative

**D6**

One vase - three blooms - pompons **or** large pompons

**D7**

One vase - three blooms - small **or** miniature ball

**D8**

One vase - three blooms - any other not listed in Classes 2 – 8

**Entrance Fee: 50p**

**Points: 6 : 4 : 2**

**Prize Money: £3 / £2 / £1**

**THE AMPEP TROPHY - best exhibit in Classes D1 – D8**

**THE MRS DURBIN TROPHY – most points in Classes D1 – D8**

## CHRYSANTHEMUM

**C1**

One vase - three blooms - incurved - any cultivar/s

**C2**

One vase - one bloom - any cultivar

**C3**

One vase - three sprays - any cultivar/s

**Entrance Fee: 50p**

**Points: 6 : 4 : 2**

**Prize Money: £3 / £2 / £1**

**THE HALES TROPHY - best exhibit in Classes C1 – C3**

**THE A. F. HILL TROPHY - most points in Classes C1 – C3**



## ROSE

- RC** | **THE ROSE CHAMPIONSHIP** - Comprising of any **2 choices** taken from A to D:-
- A. Three blooms of specimen roses - any cultivar/s
  - B. Three stems of cluster roses - any cultivar/s
  - C. Five stems of miniature roses - any cultivar/s
  - D. A bowl of HT roses - not less than 5 blooms - any cultivar/s

**Entrance Fee: £2.50**

**Points: 10 : 8 : 6**

**Prize Money: £25 / £15 / £10**

### THE CAM GEARS ROSE BOWL - best exhibit in Class RC

- R1** | Bowl of miniature roses - any number of stems - one or more cultivars
- R2** | One vase - one stem - HT rose
- R3** | One vase - one stem - cluster rose

**Entrance Fee: 50p**

**Points: 6 : 4 : 2**

**Prize Money: £3 / £2 / £1**

**THE A.G. CRANE ROSE BOWL** - best exhibit in Classes **R1 – R3**  
**THE ENGINEERING PRODUCTION ROSE BOWL** – most points in Classes **R1 – R3**

## GLADIOLUS

- GC** | **THE JIM LORD GLADIOLUS CHAMPIONSHIP**  
Two Vases - three spikes in each - any size or type, one distinct variety per vase

**Entrance Fee: £2.50**

**Points: 10 : 8 : 6**

**Prize Money: £25 / £15 / £10**

### THE D. M. WETHERED TROPHY - best exhibit in Class GC

- G1** | One vase - one spike – 100 / 200 size – any cultivar
- G2** | One vase - one spike – 300 / 400 size – any cultivar
- G3** | One vase - one spike – 500 size – any cultivar

**Entrance Fee: 50p**

**Points: 6 : 4 : 2**

**Prize Money: £3 / £2 / £1**

**B.G.S. ROSETTE** - awarded for - best spike/s in classes **G1 – G3**  
**THE FULLER TROPHY** - most points in Classes **G1 – G3**

## POT PLANTS

*(Pots not to exceed 20cm (8") diameter)*

- PPC** | **THE POT PLANT CHAMPIONSHIP**  
Three different kinds of Pot Plants – only one plant per pot

**Entrance Fee: £2.50**

**Points: 10 : 8 : 6**

**Prize Money: £25 / £15 / £10**

### THE SOCIETY'S POT PLANT SHIELD - best exhibit in Class PPC

- PP1** | Two specimen flowering plants - two distinct kinds
- PP2** | Two specimen foliage plants - two distinct kinds

**Entrance Fee: £1.50**

**Points: 8 : 6 : 4**

**Prize Money: £10 / £5 / £2.50**

**THE FORMER CHAIRMAN'S TROPHY** - best exhibit in Classes **PP1 – PP2**

- PP3** | One pot of Geranium / Pelargonium
- PP4** | Specimen flowering plant (excluding orchids)



## CACTI & SUCCULENT

(No plant should be staged sitting in water)

- CS1** Two cacti - different species - separately potted – max. pot size 20cm (8")
- CS2** Two succulents - different species - separately potted - max. pot size 20cm (8")
- CS3** Three cacti **or** three succulents - different species - separately potted - max. pot 11.5cm (4 ½ ")
- CS4** A **planted** container of cacti and/or succulent – at least 3 varieties
- CS4** One cactus or succulent - any size pot
- CS6** One cactus or succulent - pot not to exceed 12.5cm (5")

Entrance Fee: 50p

Points: 6 : 4 : 2

Prize Money: £3 / £2 / £1

**THE SOCIETY'S CACTI SALVER** – best exhibit in Classes **CS1 – CS6**

**THE MRS GULTZ TROPHY** - most points in Classes **CS1 – CS6**

## CUT FLOWER

(All cut flowers must be home-grown)

- CFC** **THE CUT FLOWER CHAMPIONSHIP**
- Three Vases - a different type of flower in each vase - taken from the schedule (classes **DC – CF10**)
- NB. Each vase must be distinctly different e.g. Not taken from the same class**

Entrance Fee: £2.50

Points: 10 : 8 : 6

Prize Money: £25 / £15 / £10

**THE JOHN JACKSON VASE** - best exhibit in Class **CFC**

- CF1** One vase – five stems – Sweet Peas
- CF2** One vase - one stem - annual (other than Asters)
- CF3** One vase of home-grown garden flowers
- CF4** One vase – three stems – Carnations or Pinks
- CF5** One vase - three stems - Asters - single or double
- CF6** One vase – one bloom - Sunflower
- CF7** One vase - three blooms – Zinnias
- CF8** One vase – three heads – Hydrangea
- CF9** One vase of home-grown everlasting flowers - e.g. Helichrysum, Statice etc
- CF10** Any other Flower not included in this section

Entrance Fee: 50p

Points: 6 : 4 : 2

Prize Money: £3 / £2 / £1

**THE MRS JOYCE ARTHUR TROPHY** - best exhibit in Classes **CF1 – CF10**

**THE IVY JENKINS PLAQUE** – most points in Classes **CF1 – CF10**

## TOP GROWER

- TG** One pot plant - any from the Schedule
- One vase of home-grown flowers - any from the Schedule
- One vegetable exhibit - any from Schedule
- To be shown on a board no larger than 60cm x 46cm (24" x 18")

Entrance Fee: £1.50

Points: 8 : 6 : 4

Prize Money: £10 / £5 / £2.50

**THE TOP GROWER TROPHY** – best exhibit in Class **TG**

## VEGETABLE & FRUIT

**OC**

### THE ONION CHAMPIONSHIP

\* Three onions - grown from seeds  
\* Three onions – not exceeding 225g (8oz)  
- Space allowed 61cm x 46cm (24" x 18")

\* Three onions - grown from sets  
\* Six large shallots

**Entrance Fee: £2.50**

**Points: 10 : 8 : 6**

**Prize Money: £25 / £15 / £10**

**THE R.H.S BRYANT TROPHY – best exhibit in Class OC**

**VC**

### THE VEGETABLE COLLECTION

A collection of five kinds of vegetables – one of each kind. To be staged in a space not exceeding 61cm x 61cm (24"ft x 24"). All stands, dishes, cloths, etc. to be provided by the exhibitor. Parsley and foliage of the kinds exhibited only may be used as natural dressing. Backboard permitted

**Entrance Fee: £1.50**

**Points: 8 : 6 : 4**

**Prize Money: £10 / £5 / £2.50**

**THE CHARLES HEAL TROPHY – best exhibit in Class VC**

**V1**

Three potatoes - white - round or oval

**V2**

Three potatoes - coloured - round or oval

**V3**

Five runner beans – with stalks

**V4**

Five French beans – with stalks

**V5**

Three globe beetroot - approx. 7.5cm stalk (3")

**V6**

Two peppers - with stalks

**V7**

Five shallots - Large exhibition

**V8**

Three onions - dressed - spring sown

**V9**

Three onions - dressed - grown from sets

**V10**

Two leeks

**V11**

Three courgettes not to exceed 15cm (6")

**V12**

Three stump rooted carrots - approx. 7.5cm stalk (3")

**V13**

Two cucumbers

**V14**

Five chillies - Any variety/ies or mixed

**V15**

Stem of cherry type tomatoes - at least seven

**V16**

Five tomatoes - excluding cherry type – with calyces

**V17**

Two Sweetcorn – in husks

**V18**

A Trug/Basket of Vegetables – your choice

**V19**

Any other vegetable – not included in this section

**FR20**

Three cooking apples – with stalks

**FR21**

Three dessert apples - with stalks

**FR22**

Five dessert plums - with stalks

**FR23**

Three sticks of rhubarb (**NB.**Don't trim the base, but trim the leaf to 75mm/ 3")

**FR24**

Three pears – with stalks

**FR25** Dish of cultivated blackberries – quantity 10 – with calyces & stalks

**FR26** Any other fruit not included in schedule

**HB1** One vase – minimum of three types of herbs

**Entrance Fee: 50p**

**Points: 6 : 4 : 2**

**Prize Money: £3 / £2 / £1**

**THE OWEN EVANS MEMORIAL TROPHY** - most points in Classes **V1 – HB1**

**THE COLIN REED MEMORIAL TROPHY** - best exhibit in Classes **V1 – HB1**

## **CFC** CFS COLLECTION

Collection of three types of vegetables and/or fruit taken from the following list:-  
3 carrots, 1 cauliflower, 3 courgettes, 3 parsnips, 5 pods of peas, 3 potatoes,  
3 onions, 5 runner beans, 3 tomatoes, 3 peppers, 3 globe beetroot, 2 sweetcorn  
(in husks), 2 aubergines, 3 apples, 3 pears, 3 sticks of rhubarb, 1 melon, a small  
saucer of berries/currants

All vegetables and/or fruit are to be displayed for effect, within a space 46 x  
60cm (18" x 24"). A cloth is permitted.

**Entrance Fee: £1.50**

**Points: 8 : 6 : 4**

**Prize Money: £10 / £5 / £2.50**

**POSIES OF CLEVEDON CFS COLLECTION TROPHY** – best exhibit in Class **CFC**

## **NOVICE** - *Someone who has not received a 1<sup>st</sup> prize previously for a similar exhibit*

**N1** One vase - three blooms - Dahlias

**N2** One vase - three stems – Roses

**N3** One vase – 10 sprigs - Lavender

**N4** One vase - one spike – Gladiolus - Any size – Any cultivar

**N5** One vase of home-grown garden flowers

**N6** One Foliage pot plant

**N7** One Flowering pot plant

**N8** An arrangement of flower heads floating in a dish

**N9** One jar of chutney - any type (see 'Preserves' for guidance)

**N10** A jar of marmalade (see 'Preserves' for guidance)

**N11** Three potatoes

**N12** Two courgettes

**N13** Five runner beans

**N14** Three onions

**N15** Four tomatoes

**N16** One Cucumber

**N17** Three chilli peppers

**N18** Any other vegetable **or fruit** not mentioned in this section

**N19** An unusually shaped fruit / vegetable (**1<sup>st</sup> prize rule does not apply to this class**)

**Entrance Fee: 50p**

**Points: 6 : 4 : 2**

**Prize Money: £3 / £2 / £1**

**THE GEOFF PARSONS MEMORIAL TROPHY** – best exhibit in Classes **N1 – N19**

**THE ARTHUR SHAPLEY TROPHY** – most points in Classes **N1 – N19**



## GIANT VEG

- GV1** Heaviest Marrow
- GV2** Heaviest Cabbage
- GV3** Heaviest Onion
- GV4** Heaviest Broad Bean
- GV5** Heaviest Cucumber
- GV6** Heaviest Potato
- GV7** Longest Runner Bean
- GV8** Heaviest Carrot
- GV9** Heaviest Beetroot
- GV10** Heaviest Pepper
- GV11** Heaviest Aubergine
- GV12** Heaviest Tomato
- GV13** Longest Cucumber
- GV14** Heaviest Swede



**Entrance Fee: 50p**

**Prize Money: £5 for 1<sup>st</sup> place**

### **Giant Veg – Previous Best Weight/Size:**

Heaviest Tomato	531 g	<i>Grown By: Jeff Withers</i>
Heaviest onion	2.6 kg	<i>Grown By: Andy Stephens</i>
Heaviest broad bean	107 g	<i>Grown By: Mark Perry</i>
Heaviest Cucumber	2.25 kg	<i>Grown By: Jeff Withers</i>
Heaviest Marrow	50.5 kg	<i>Grown By: David Withers</i>
Heaviest Cabbage	17.1 kg	<i>Grown By: Andy Stephens</i>
Heaviest Beetroot	7.9 kg	<i>Grown By: Jeff Withers</i>
Heaviest Pepper	248 g	<i>Grown By: Sue Withers</i>
Heaviest Carrot	-	<i>Grown By: Jeff Withers</i>
Longest runner bean	57 cm	<i>Grown By: Jeff Withers</i>
Longest Cucumber	70.4 cm	<i>Grown By: Jeff Withers</i>



## EGGS

*(The judge reserves the right to break the eggs open)*

- E1** Four Hens' Eggs – Brown – Breed to be named
- E2** Four Hens' Eggs – Other colour – Breed to be named
- E3** Three Eggs – **Other** than Hens' - Type to be named
- E4** The heaviest Hen's Egg (One prize only - £1, no points)

**Entrance Fee: 50p**

**Points: 6 : 4 : 2**

**Prize Money: £3 / £2 / £1**

**THE SOCIETY'S EGG TROPHY – most points in Classes E1 – E4**

## HOME ECONOMICS - PRESERVES

*Please ensure you follow the rules, otherwise your exhibit will be disqualified.*

See "Preserves" in 'Guidelines on showing' towards the front of this booklet.

- |           |  |
|-----------|--|
| <b>P1</b> | Three jars of preserves – One <b>Jam</b> , one <b>Marmalade</b> and one <b>Fruit Jelly</b>   |
| <b>P2</b> | Jar of any type of berry jam (e.g., blackberry, raspberry, strawberry etc.)  |
| <b>P3</b> | Jar of any type of jam - excluding above   |
| <b>P4</b> | Jar of jelly - any variety   |
| <b>P5</b> | Jar of marmalade   |
| <b>P6</b> | Jar of curd - any variety  |
| <b>P7</b> | Jar of any type of chutney   |
| <b>P8</b> | Jar of pickled vegetables, eggs etc. (Lids only - no wax discs and no cellophane tops) <b>NB -You may use a larger jar for this class only</b> |

**Entrance Fee: 50p**

**Points: 6 : 4 : 2**

**Prize Money: £3 / £2 / £1**

**THE PRESERVES SALVER** – most points in Classes **P1 – P8**

## HOME ECONOMICS - BAKES

All foods **must be covered** in a clear plastic bag, clingfilm, or a non-breakable see-through cake dome & be presented on a plate (or similar), with doilies

- |             |   |
|-------------|---|
| <b>HE1</b>  | A round of shortbread, cut into equal pieces - see recipe at back of schedule           |
| <b>HE2</b>  | <b>New</b> - A coffee sandwich - see recipe at back of schedule                         |
| <b>HE3</b>  | Three Fruit Scones - recipe to be shown (placed under the plate)                        |
| <b>HE4</b>  | Lemon Drizzle Loaf - see recipe at back of schedule                                     |
| <b>HE5</b>  | A <b>Vegan</b> cake - recipe to be shown (placed under the plate)                       |
| <b>HE6</b>  | <b>New</b> – A cake decorated with sugar-craft (to be judged on appearance only)        |
| <b>HE7</b>  | Three decorated small cakes/cupcakes  |
| <b>HE8</b>  | Tea loaf - own recipe to be shown (placed under the plate)                              |
| <b>HE9</b>  | Victoria Sandwich - see recipe at back of schedule                                      |
| <b>HE10</b> | Fruit Cake - see recipe at back of schedule   |
| <b>HE11</b> | <b>New</b> – Three Slices of Flapjack - own recipe to be shown (placed under the plate) |
| <b>HE12</b> | A Gluten Free Cake 18 - 20cm (7" - 8") tin – see recipe at back of schedule             |
| <b>HE13</b> | A Quiche – recipe to be shown (placed under the plate)                                  |
| <b>HE14</b> | Three Savoury Scones – recipe to be shown (placed under the plate)                      |
| <b>HE15</b> | Three Sausage Rolls – recipe to be shown (placed under the plate)                       |
| <b>HE16</b> | Three homemade Bread Rolls – recipe to be shown (placed under the plate)                |

**Entrance Fee: 50p**

**Points: 6 : 4 : 2**

**Prize Money: £3 / £2 / £1**

**THE MRS T DURBIN CUP** – most points in Classes **HE1 – HE16**

**THE LILIAN & SEYMOUR TERRY TROPHY** – best exhibit in the Home Economics classes **HE1 – HE16**

## MEN ONLY

- MO1** Victoria Sandwich - see recipe at back of schedule  
**MO2** Fruit Cake - see recipe at back of schedule  
**MO3** Three Cheese Scones - recipe to be shown (placed under the plate)  
**MO4** **New** –Three homemade Bread Rolls – recipe to be shown (placed under the plate)

**Entrance Fee: 50p**

**Points: 6 : 4 : 2**

**Prize Money: £3 / £2 / £1**

**THE HOME ECONOMICS 'MEN ONLY' TROPHY** – most points in Classes **MO1 – MO4**

### **TBC** TOP BAKER CHALLENGE

A display of a minimum of three different items of baking to 'wow' the judge. Each item to be labelled and displayed within a space 46 x 60cm (24" x 24") – height unlimited. Accessories and display materials can be used to enhance the display. *ALL baked items to be covered with clear plastic bags*

**Entrance Fee: £1.50**

**Points: 8 : 6 : 4**

**Prize Money: £10 / £5 / £2.50**

**TINKLING FAMILY TROPHY** – best exhibit in Class **TBC**

## HONEY

**Honey and wax must be from the exhibitor's apiary**

Jars must be matching, minimum net weight 340g and show affixed labels 2cm from base.

*See following link for further details:*

<https://www.bbka.org.uk/pages/faqs/site/members-area/category/honey-show-faqs>

- H1** Two jars of liquid honey (light, medium or dark)  
**H2** Two jars of set honey (creamed or naturally crystallised)  
**H3** One standard 225g/8oz container of cut-comb, minimum gross weight 200g/7oz  
**H4** Three 28g/1oz (approx.) beeswax blocks, all uniform in shape. Presented on a flat card in either show case or clear plastic bag

**Entrance Fee: 50p**

**Points: 6 : 4 : 2**

**Prize Money: £3 / £2 / £1**

**Rosette** – best exhibit in Classes **H1 – H4**

## DRINKS

All Bottles/Containers to be shown unlabelled. Classes DR1-DR3 to be shown in clear glass 500/750ml bottles. Flanged plastic stoppers to be used. Class DR4 to be shown in brown bottles with crown tops. Class DR5 to be shown in any container – 1 quart max.

- DR1** A bottle of Red table wine  
**DR2** A bottle of White table wine  
**DR3** A bottle of Rosé table wine  
**DR4** A bottle of homebrewed beer or lager  
**DR5** Cider – to be judged on taste and colour  
**DR6** A bottle of Sloe Gin or any Fruit Liqueur  
**DR7** A bottle of fruit or flower Cordial – to be named

**Entrance Fee: 50p**

**Points: 6 : 4 : 2**

**Prize Money: £3 / £2 / £1**

**THE ROBERT HODDELL TROPHY** - most points in Classes **DR1 – DR7**

**THE JOHN DAWSON TROPHY** - best exhibit in Classes **DR1 – DR7**

## HANDICRAFT

(Your exhibit should **NOT** have been previously entered at the Show)

- HC1** An original **Drawing**, any medium – max. size 45cm x 45cm / 18" x 18"
- HC2** An original **Painting**, any medium – max. size 45cm x 45cm / 18" x 18"
- HC3** A **miniature** painting/picture (any medium) - max size 15cm x 15cm / 6" x 6"
- HC4** An item using recycled materials, max space allowed - 45cm x 45cm / 18" x 18"
- HC5** An article of embroidery **or** cross-stitch etc. - max size 45cm x 45cm / 18" x 18"
- HC6** A crocheted article - to be shown folded (if larger than 45cm x 45cm / 18"x18")
- HC7** A hand knitted article - to be shown folded (if larger than 45cm x 45cm / 18"x18")
- HC8** A soft toy - any medium
- HC9** A handmade string of bunting, ready for hanging – length 183cm/6ft (approx.)
- HC10** A handmade 'Wedding' card
- HC11** **New** – An item of papercraft
- HC12** An article of tapestry - to be shown folded (if larger than 45cm x 45cm / 18"x18")
- HC13** An article of patchwork or quilting - to be folded (if larger than 45cm x 45cm / 18"x18")
- HC14** An article made of felted wool
- HC15** Any other handmade article not in any other class, max size 45cm x 45cm / 18"x18"
- HC16** A miniature garden scene in a standard seed tray, max size 38 cm x 24cm / 15" x 9 ½" (Using items such as - plants, soil, grass, pebbles etc.)
- HC17** **ADULT** - LEGO Master – a model made using LEGO (**NOT a kit**), max size 45cm x 45cm / 18"x18" (height unlimited)
- HC18** **New** – **UNDER 16** - LEGO Master – a model made using LEGO (**NOT a kit**), max size 45cm x 45cm / 18"x18" (height unlimited)

**Entrance Fee: 50p**

**Points: 6 : 4 : 2**

**Prize Money: £3 / £2 / £1**

**THE OWEN GULLIFORD TROPHY** - best exhibit in Classes **HC1 – HC17**

**THE MRS G BREALEY TROPHY** - most points in Classes **HC1 – HC17**

**THE PEGGY TIGWELL TAPESTRY TROPHY** - best exhibit in **HC12**

## SCARECROW COMPETITION

For families, groups and organisations.

Make a Scarecrow using old clothes, hats, boots, recycled materials etc.

Scarecrows must be able to stand/sit on their own or by using a stake but must be self-supporting.

They must not exceed 6 feet in height (183cm) and you may also use props to enhance your display.



**S1** A Scarecrow

**Entrance Fee: £1.50**

**Prize Money: £10 / £5 / £2.50**

**ROSETTE** – best exhibit in Class **S1**

## FLORAL CRAFT

The measurements given are for your allotted space and should **not** be exceeded. Exhibits may be brought ready done, where practical, provided it's your unaided work. You are not permitted to include artificial plant material (unless specified in the schedule). All classes are staged on runs of tables approximately 74cm off the ground. 'Novice Classes' are for those who have not won a 1<sup>st</sup> prize in this section previously. 'Open' are open to everyone (except Qualified/Professional). 'Expert' are open to all, plus those who are qualified/professional florists

- |            |   |
|------------|---|
| <b>FL1</b> | <b>New - NOVICE</b> – Ladies buttonhole (Can be displayed in water or water retaining medium)   |
| <b>FL2</b> | <b>New - NOVICE</b> – An arrangement in a basket – Autumn colours. Maximum space allowed 51cm x 51cm (20" x 20")  |
| <b>FL3</b> | <b>New - Open</b> – A Harvest Festival – height unlimited. Maximum space allowed - 56cm x 56cm (22" x 22")  |
| <b>FL4</b> | <b>New - Open</b> - An arrangement using only 3 flowers, plus foliage - height unlimited. Maximum space allowed 40.5cm x 40.5cm (16" x 16")   |
| <b>FL5</b> | <b>New - Open</b> - An arrangement using <b>only dried</b> flowers, foliage and seedheads etc. (natural, <u>not</u> artificial) - height unlimited. Maximum space allowed 51cm x 51cm (20" x 20") |
| <b>FL6</b> | <b>New - Expert</b> – Tranquillity – must include an element of water - height unlimited. Maximum space allowed - 51cm x 51cm (20" x 20")   |

Entrance Fee: 50p

Points: 6 : 4 : 2

Prize Money: £3 / £2 / £1

**THE A. E. DAWES TROPHY** - best exhibit in Classes **FL3 – FL5**

**THE MRS BILLET TROPHY** - most points in Classes **FL1 – FL6**

## SENIOR CITIZENS

(Any person aged **65+** at the date of the show)

- |             |  |
|-------------|--|
| <b>SC1</b>  | A jar of preserve/marmalade (see 'Home Economics Classes' for guidance)                    |
| <b>SC2</b>  | Three Welsh Cakes - own recipe to be shown (placed under the plate)                        |
| <b>SC3</b>  | A loaf cake – own recipe to be shown (placed under the plate)                              |
| <b>SC4</b>  | An article of handicraft - soft material (excluding Knitting or Crochet)                   |
| <b>SC5</b>  | An article of handicraft - hard material   |
| <b>SC6</b>  | An article of hand knitting or crochet   |
| <b>SC7</b>  | Handwriting – An amusing Poem / Verse of your choice - maximum A4 size                     |
| <b>SC8</b>  | A vase of home-grown mixed flowers   |
| <b>SC9</b>  | One flowering pot plant  |
| <b>SC10</b> | One foliage pot plant  |
| <b>SC11</b> | <b>New</b> - Fruit/s or Vegetable/s I've grown myself                                      |
| <b>SC12</b> | A buttonhole - using a single flower (Can be displayed in water or water retaining medium) |

Entrance Fee: 50p

Points: 6 : 4 : 2

Prize Money: £3 / £2 / £1

**THE KENNA MEMORIAL TANKARD** - best exhibit in Classes **SC1 – SC12**

**THE ANGLIAN WINDOWS TROPHY** - most points in Classes **SC1 – SC12**



## ADDITIONAL NEEDS – 16 years & Under

*(Open to any person with additional educational needs)*

- ADC1** | A picture any medium – A4 size
- ADC2** | Three homemade and decorated Fairy Cakes – on a paper plate
- ADC3** | A decorated flowerpot **or** a painted pebble
- ADC4** | A pot plant I look after
- ADC5** | My home-grown fruit, vegetable or a flower

**Entrance Fee: 50p**

**Points: 6 : 4 : 2**

**Prize Money: £1.50 / £1 / 50p**

**THE VALLEY GATEWAY TROPHY** - best exhibit in Classes ADC1– ADC5

## ADDITIONAL NEEDS – Over 16 years

*(Open to any person with additional educational needs)*

- ADA1** | A picture any medium – A4 size
- ADA2** | Three homemade and decorated Fairy Cakes – on a paper plate
- ADA3** | A decorated flowerpot **or** a painted pebble
- ADA4** | A pot plant I look after
- ADA5** | My home-grown fruit, vegetable or a flower

**Entrance Fee: 50p**

**Points: 6 : 4 : 2**

**Prize Money: £1.50 / £1 / 50p**

**THE DAVID NASH TROPHY** - best exhibit in Classes ADA1 – ADA5

## PHOTOGRAPHY

This is a competition for **amateur** photographers.

You can put your photo/s up on the photo-boards provided inside the Marquee, from 5pm Friday, prior to the Show.

Please ensure that you put your '[Entry Class Card](#)' next to each of your photos on the display boards (these are provided in the small brown '**Exhibitor's Envelope**', which you **must** collect from the Main Entrance of the Marquee, on arrival).

All photos to be shown without frames or mounts, and not to exceed 20cm x 15cm (8" x 6") – INCLUDING THE BORDER

**PLEASE NOTE** : There is a maximum of **TWO ENTRIES** per exhibitor per class

- PH1** | Any subject – in black & white
- PH2** | A Portrait of an adult or child
- PH3** | A Portrait of an animal or bird
- PH4** | I share my garden with...
- PH5** | Somewhere in Clevedon
- PH6** | Humorous
- PH7** | Up close
- PH8** | A Landscape
- PH9** | Caught in action
- PH10** | **New** – Water



PH11 **New** – Yellow

PH12 **NOVICE** - A Colour photograph – A Portrait

PH13 **NOVICE** - A Colour Photograph – A Landscape

PH14 **NOVICE** - A Colour Photograph – Up close



**Entrance Fee: 50p**

**Points: 6 : 4 : 2**

**Prize Money: £3 / £2 / £1**

**THE SOCIETY'S PHOTOGRAPHIC TROPHY** - most points in Classes PH1 – PH11  
**THE HENRY DAY SALVER** – best exhibit in Classes PH1 – PH11



## CHILDREN

Whilst we understand that some supervision may be required from an adult, all work shown in these classes must be the child's own. Please read the Rules and Regulations, making sure that they're understood. **NO NAMES** on exhibits - **only age to be shown**

**ALL CHILDREN UP TO THE AGE OF 11 WILL RECEIVE A CERTIFICATE**

**PHOTOGRAPHS:** Please see the previous 'Photography Classes' for instructions.

# How To Make Mr Grass-head



## CHILDREN – Pre-school

- Pre1** **New** – A Mr Grass-head (see instructions)
- Pre2** Make a Crown or a Hat
- Pre3** Make a Caterpillar using an eggbox, or similar
- Pre4** **New** - Draw & colour a picture of a Clown - A4 size
- Pre5** A picture made from stickers – A4 size
- Pre6** A creature made from a potato
- Pre7** Three decorated Rich Tea Biscuits
- Pre8** A pasta necklace

**Entrance Fee: 50p**

**Points: 6 : 4 : 2**

**Prize Money: £1.50 / £1 / 50p**

**THE A.S.G. TROPHY** - best exhibit in Classes **Pre1 – Pre8**  
**THE SECOND ASG TROPHY** - most points in Classes **Pre1 – Pre8**

## CHILDREN - AGES 5 TO 7

- CH1** **New** – A Mr Grass-head (see instructions)
- CH2** **New** - A picture of a Monster - no larger than A4 size
- CH3** A miniature garden scene in a standard seed tray
- CH4** A Painted Pebble - theme: An Imaginary Creature
- CH5** A Pot Plant I look after – maximum pot size 20cm (8")
- CH6** A creature made from food
- CH7** My home-grown fruit, vegetable or flower
- CH8** Three decorated Fairy Cakes – on a paper plate
- CH9** A Photo – Any subject SEE 'PHOTOGRAPHY' FOR ENTRY DETAILS

**Entrance Fee: 50p**

**Points: 6 : 4 : 2**

**Prize Money: £1.50 / £1 / 50p**

**THE SHAPLEY TROPHY** - best exhibit in Classes **CH1 – CH9**  
**THE SOCIETY'S TROPHY** - most points in Classes **CH1 – CH9**

## CHILDREN - AGES 8 TO 11

- JR1** A small matchbox filled with as many items beginning with the letter 'T'.  
Include a list of contents, to be placed under the matchbox
- JR2** **New** - A picture of a character from your favourite book - no larger than A4 size
- JR3** A miniature garden scene in a standard seed tray
- JR4** Any piece of homemade handicraft
- JR5** A Painted Pebble - theme: A Creature/Animal
- JR6** My home-grown fruit, vegetable or flower
- JR7** A creature made from food
- JR8** Three homemade and decorated Fairy Cakes – on a paper plate
- JR9** A photo - Any subject SEE 'PHOTOGRAPHY' FOR ENTRY DETAILS

**Entrance Fee: 50p**

**Points: 6 : 4 : 2**

**Prize Money: £1.50 / £1 / 50p**

**THE FORDA TROPHY** - best exhibit in Classes **JR1 – JR9**  
**THE SOCIETY'S TROPHY** - most points in Classes **JR1 – JR9**

## AGE 12 - 16

<b>YP1</b>	A Vegetable, Fruit or Flower, I've grown myself	
<b>YP2</b>	A small homemade 'Bug / Bee Hotel' or a birds 'Nesting Box'	
<b>YP3</b>	Any item of handcraft	
<b>YP4</b>	A Drawing or Painting in whatever media you like – no bigger than A3	
<b>YP5</b>	A small homemade Vegetarian Pizza – on a paper plate, covered in a clear bag	
<b>YP6</b>	A Victoria Sponge – see recipe at back of schedule	
<b>YP7</b>	Three pieces of Flapjack	
<b>YP8</b>	A Photo – Humorous	<i><u>SEE 'PHOTOGRAPHY' FOR ENTRY DETAILS</u></i>
<b>YP9</b>	A Photo – Blue	<i><u>SEE 'PHOTOGRAPHY' FOR ENTRY DETAILS</u></i>
<b>YP10</b>	A Photo – Up Close	<i><u>SEE 'PHOTOGRAPHY' FOR ENTRY DETAILS</u></i>

**Entrance Fee: 50p**

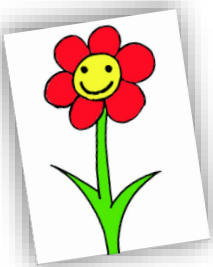
**Points: 6 : 4 : 2**

**Prize Money: £1.50 / £1 / 50p**

**THE HAMLIN TROPHY** - most points in relevant Classes – **YP1 – YP10**

**THE FORTE TROPHY** - best exhibit in relevant Classes – **YP1 – YP10**

**THE O. BURDEN TROPHY** - best exhibit in Class **YP1**



## RECIPES

### Shortbread

250g (10 oz) Plain Flour  
250g (10 oz) Butter  
125g (5 oz) Caster Sugar  
125g (5 oz) Cornflour

1. Pre-heat oven to 150 °C / Gas mark 2.
2. Grease tin.
3. Cream butter and Sugar.
4. Add sifted flour and cornflour and mix to a smooth dough,
5. Press into tin and mark out 8 equal segments and prick all over with a fork.
6. Bake for 1 hour until lightly golden.
7. Whilst still warm, sprinkle with caster sugar and leave to cool.



## Coffee Sandwich

175g (6 oz) caster sugar  
3 eggs  
175g (6 oz) soft light brown sugar  
2 teaspoons instant coffee dissolved in  
1 tablespoon of boiling water  
175g (6 oz) self-raising flour  
½ teaspoon baking powder  
Walnut pieces to decorate



1. Bake in two greased and floured 18cm ( 7" ) round tins at 180°C or gas Mark 4 for approx. 25 mins.
2. Cream margarine and sugar.
3. Sift flour and baking powder together and add to bowl, along with the eggs and whisk the ingredients together.
4. Add dissolved coffee and beat to incorporate.
5. Split mixture between 2 tins and bake.

**Buttercream Filling:** 40g (1 ½ oz) softened butter; 80g (3oz) icing sugar; 1 teaspoon instant coffee dissolved in 2 teaspoons boiling water. Beat butter until smooth. Gradually beat in icing sugar and then dissolved Coffee. Sandwich between 2 sponges.

**Coffee Glace Icing:** 115g (4oz) icing sugar, sifted; 1 ½ teaspoons instant coffee dissolved in 1 tablespoon boiling water.

Sift icing sugar into a bowl and gradually mix in enough dissolved coffee to give a smooth consistency. Spoon over top of cake and decorate with walnut pieces.

## Victoria Sandwich

175g (6 oz) caster sugar  
175g (6 oz) margarine  
175g (6 oz) self-raising flour  
3 eggs  
Pinch of salt



1. Bake in two 18cm ( 7" ) round tins at 180°C or gas Mark 4 for approximately 30 mins.
2. Sandwich together with jam only.
3. Dust with Caster Sugar.



## Lemon Drizzle Loaf

175g (6oz) self-raising flour  
1 teaspoon baking powder  
175g ( 6oz) margarine  
175g ( 6oz ) caster sugar  
3 medium eggs  
2 tablespoons milk  
Finely grated rind of 2 lemons

### Lemon Syrup:

Juice of 2 lemons  
100g ( 4oz ) caster sugar

Base-lined 1 kg ( 2 lb ) loaf tin



1. Mix together flour, baking powder, butter, sugar, eggs, milk and lemon rind.
2. Put into tin and bake in preheated oven at 180°C, 350°F or gas Mark 4 for 55mins - 1hr until cooked.
3. Gently heat lemon juice and sugar until dissolved, pour over warm cake.

## Gluten Free Honey Cake

300g (10 oz) unsalted butter, softened  
250g (9 oz) golden caster sugar  
4 medium eggs  
150g (5 oz) Gluten Free oat flour or buckwheat flour  
150g (5 oz) ground almonds  
2 teaspoons baking powder  
50g (2 oz) flaked almonds  
4 tablespoons runny honey



***Greased, base-lined 23cm (9") spring-form cake tin, placed on a baking tray***

1. Cream butter and sugar together, add eggs one at a time, adding a little flour with each one.
2. Fold in ground almonds, then sift over remaining flour & baking powder and fold in gently.
3. Put into prepared tin, smooth gently and scatter the flaked almonds over the surface.
4. Bake in a preheated oven 170°C or gas mark 3 – 45 mins or until a skewer inserted in the centre comes out clean.
5. While cake is still hot, evenly trickle over honey.
6. Place tin on wire rack to cool before turning out.



## **Fruit Cake**

225g (8 oz) self-raising flour  
175g (6 oz) margarine  
125g (5 oz) caster sugar  
100g (4 oz) currants  
100g (4 oz) sultanas

50g (2 oz) mixed peel  
50g (2 oz) glace cherries  
3 eggs  
pinch of salt  
milk to mix



Bake in 18cm (7") round tin at 170°C or gas Mark 3 for approx.1 hour

## We are always looking for *help*

**Wednesday before** - Help to load all our equipment to The Salthouse Fields.

**Thursday & Friday** - Help sorting out and setting up - any help would be great.

**Saturday & Sunday** (during the Show) – Help on Stalls, selling Schedules, clearing tables in the Refreshments Tent etc.

**Sunday – AFTER THE SHOW** - We especially need as much help as possible, immediately after the Show closes, to pack-up and remove absolutely **everything** off of the field THAT NIGHT!!

If you think you can help, please email:

[cfs.showsecretary@gmail.com](mailto:cfs.showsecretary@gmail.com)

and/or have a look at our website:

[www.clevedonflowershow.uk](http://www.clevedonflowershow.uk)

# Thank You!



# COMPANION DOG SHOW

## SUNDAY 24<sup>th</sup> AUGUST 2025

Entries Taken From: 9am

Judging Starts at: 10am

For Details Please Ring:

Andrea Eaton: 01275 874728





