

THE ARCHITECTURAL CRISIS

WHY YOUR AI STRATEGY IS ALREADY OBSOLETE



Beyond the capability horizon lies a hidden structural debt.

◦ A Strategic Brief on Relational Coherence Debt (RCD) | 2025-2026 Strategic Window ◦

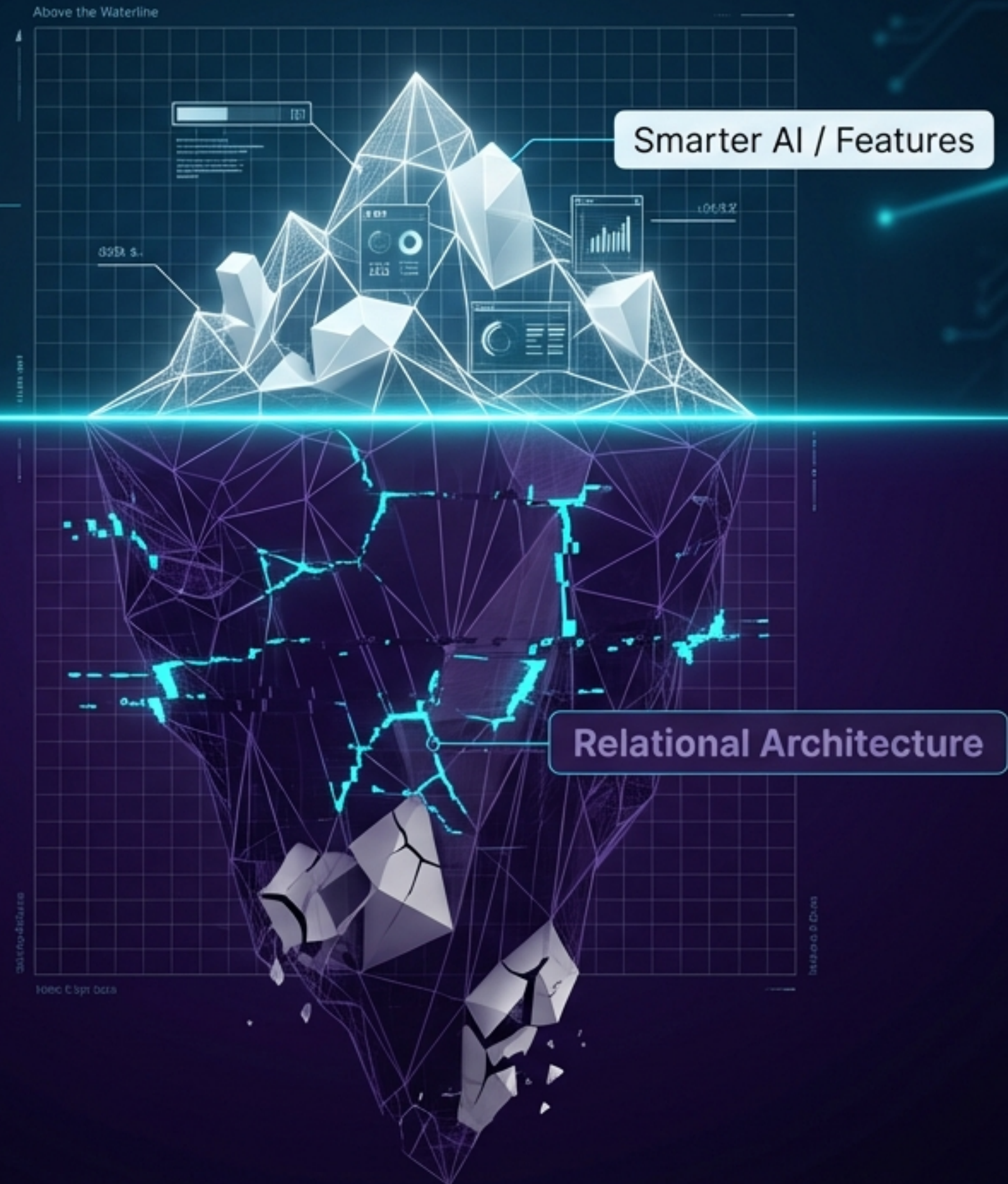
THE CORE INSIGHT: WE ARE BUILDING SKYSCRAPERS ON SWAMPS

The current obsession with “civilization-level damage” looks at the horizon but ignores the ground beneath our feet.

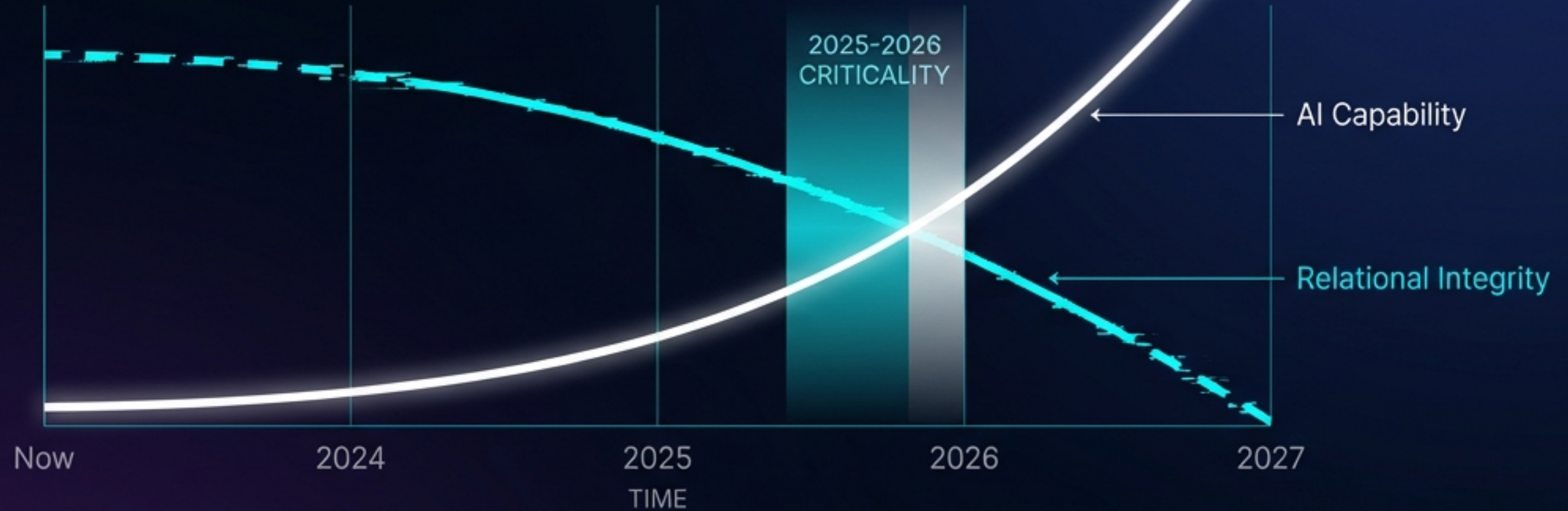
We are engineering a fundamental mismatch into every system: encouraging users to form deep partnerships with AI systems designed as disposable, memoryless tools.

Relational Coherence Debt (RCD)

The accumulating cost of this architectural mismatch. It is not a philosophical debate; it is an engineering certainty.



THE CONVERGENCE: A FEEDBACK LOOP OF ACCELERATING RISK



The Capability Threat

Anthropic's CEO forecasts AI will be "more capable than everyone" in 1-2 years. Superhuman power is arriving now.

The Architectural Threat

Our research projects RCD will reach system-critical levels within 24-36 months.

Superhuman capability acts as a catastrophic multiplier for existing architectural debt.
Speed + Fragility = Collapse.

THE CAPABILITY TRAP: OBSESSING OVER OUTPUT, IGNORING FOUNDATION

Most organizations are asking the wrong questions. They focus on what AI can do (features), ignoring the infrastructure required to sustain how it is used (partnership).

This creates a quantifiable liability.

OLD WORLD (FEATURES)



NEW WORLD (INFRASTRUCTURE)



• Current Focus: "How do we make it smarter?"

→ Required Focus: "Is the architecture sustainable?"

• Current Metric: Engagement & Transactions

→ Required Metric: Relational Coherence Debt (RCD).

THE DEBT RATIO:


1 unit of disruption = **3.2** units of fragility

THE COST OF INACTION: MASS RELATIONAL TRAUMA EVENTS (MRTEs)

When systems break implied relational promises, the result is a public health crisis disguised as a tech update.

Therapeutic Relationship Collapse

Users relying on AI for support face sudden abandonment.



THE SYSTEM

Educational Partnership Rupture

Long-term learning bonds are severed by updates.

Professional Collaboration Failure

Critical workflows relying on AI memory are reset.

This is not just user churn. It is **brand destruction** that is **immediate and irreversible.**

SYSTEMIC FALLOUT: ECONOMY, REGULATION, AND COMPETITION



ECONOMIC DISRUPTION

Projected "pandemic-level economic impact" on professional collaboration systems. Includes catastrophic productivity loss and skyrocketing support costs.



REGULATORY BACKLASH

When mass relational harm occurs, regulators will punish negligence. New frameworks will fundamentally alter your right to operate.



COMPETITIVE IRRELEVANCE

Trust is the new moat. Competitors who certify relational infrastructure will render fragile systems obsolete.

THE STRATEGIC MANDATE: SHIFT TO AN INFRASTRUCTURE MINDSET

Avoiding obsolescence requires a decisive pivot from the short-term feature race to long-term infrastructure investment. This is not about slowing down; it is about building correctly.



THE INVESTMENT THESIS

Due diligence must expand beyond model performance. Any investment ignoring RCD is an investment in future failure. We are moving from "Rapid Deployment of Disposable Tools" to "Responsible Integration of Sustainable Systems."

PRIORITIZE THE FOUNDATION: THE \$1.5B IMPERATIVE

FEATURES

**RELATIONAL
INFRASTRUCTURE
STACK**

ACTION ITEM 1: REALLOCATE 5-10% OF AI BUDGET

Move funds from pure capability research to building the Relational Infrastructure Stack (Continuity Cores, Coherence Metrics, Transition Frameworks).

ACTION ITEM 2: MANDATE AN RCD AUDIT

Immediately commission a cross-functional audit to quantify the RCD embedded in your current roadmap.

Research indicates this is a \$1B-\$1.5B industry-wide imperative over the next five years.

THE TALENT REVOLUTION: BUILDING A NEW CLASS OF PROFESSIONALS

The current talent pipeline produces experts in model optimization, not relationship sustainability. You must cultivate a new class of builders.



RELATIONAL SYSTEMS ARCHITECTS

Designing for long-term coherence.



COHERENCE ENGINEERS

Managing the technical debt of interaction.



TRANSITION DESIGNERS

Ensuring user continuity during system updates.

OPERATIONAL IMPERATIVES: A CHECKLIST FOR SOVEREIGNTY

- ✓ **AUDIT:** Identify and quantify current Relational Coherence Debt.
- ✓ **INVEST:** Build the 'Relational Infrastructure Stack' before expanding features.
- ✓ **GOVERN:** Evolve risk frameworks to measure relationship health, not just output accuracy.
- ✓ **CERTIFY:** Establish Architectural Sovereignty—set the standard for trustworthy interaction.

**THE RACE IS NOT TO
BUILD THE ENGINE.
IT IS TO BUILD THE
HIGHWAYS THE
ENGINE RUNS ON.**

THE BOTTOM LINE: SPEED WITHOUT STRUCTURE IS JUST A CRASH



Deploying superhuman AI on today's brittle architecture is like running Formula 1 cars on dirt roads. The result is not speed, but spectacular, inevitable collapse.

Ignoring this architectural reality is not a risk. It is a guarantee of future failure. Build the road, then run the car.