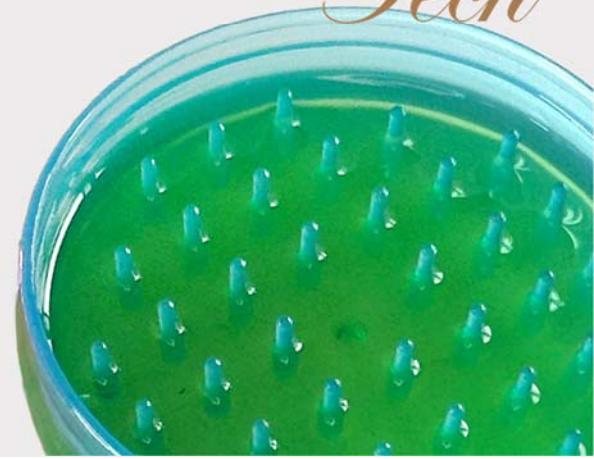


GelTech

Scented Odors Control Concentrated Gel Cartridges Type

SCEN
Tech

異味控制香薰凝膠 盒裝設計



GelTech is a complex blend of essential oils formulated to effectively neutralize odors and reduce unpleasant smells. Its active ingredients react with odor molecules, breaking them down and converting them into non-volatile compounds. This process lowers both the concentration and intensity of the odors, delivering true deodorization - not simply masking them with fragrance.

Inside each cartridge, the unique pin-shaped design enhances gel usage efficiency. When paired with our MDF fan dispenser, it creates airflow turbulence to boost performance. The design also improves gel stability, allowing the cartridge to function reliably even when placed sideways or upside down.

GelTech 蘊含複合精油配方，能有效中和異味，減少空氣中的難聞氣味。其成分會主動分解異味分子，並將其轉化為非揮發性化合物，從而降低異味的濃度與強度，真正發揮除味功效，而非以香味掩蓋。盒內的獨特「針形」設計不僅提升凝膠的使用效率，配合 MDF 風扇式擴香器使用時，更可產生氣流對流，加強除味效果。同時，該設計亦有效提升凝膠穩定性，使其即使側放或倒置亦能穩定運作。

Odors Treated

可處理的氣味類型

- Nuisance Organic Odors 一般有機異味
- Organic Acid Odors 有機酸氣味
- Cigarette Smoke 香煙煙味
- Body Odor 體味
- Urine Odor 尿味

Model
型號

GelTech
GelTech

Dimensions
尺寸

70 Dia x 21H (mm)
70直徑x 21高(毫米)

Fragrance
香味

Green Apple, Grapefruit, Linen, Neutral
青蘋果、西柚、清新、自然、

Product Features
產品特點

- Over 90% active ingredients for high-performance
含有超過90%活性成分，功效卓越
- Super concentrated formula for long-lasting effectiveness
高濃度配方，效果持久
- Spill-proof design with excellent stability
防漏設計，穩定性極佳
- Stable under heat and cold conditions
具備良好耐熱及耐寒穩定性
- Phthalate-free and VOC-free for safer air quality
不含鄰苯二甲酸酯及揮發性有機化合物 (VOC)，安全可靠
- Provides uniform output throughout its lifespan
使用期內穩定釋放香氣

Weight
重量

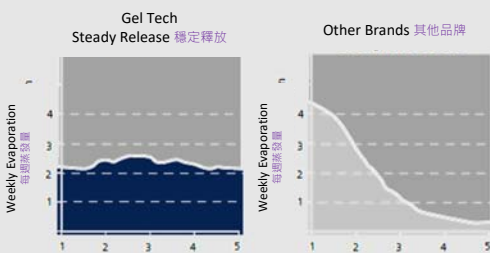
34 grams
34克

Validity
有效期

30-60 days (count from removal of lid)
30-60天(由開蓋起計)

Coverage*
覆蓋範圍*

Up to 30 m³
可覆蓋致30立方米



Daily Uniform Evaporation

- Unlike other gels, GelTech offers a longer, uniform release over a 30-day cycle.
- Most gels deliver a strong initial burst but fade quickly within the first 10 days.

每日均勻揮發

- 有別於其他膠體產品，GelTech能在整個30天週期內穩定釋放香氣。
- 市面一般凝膠雖然初期氣味濃烈，但往往在頭10天內迅速減弱。

*This figure may slightly differ depending on the fragrance selected and also the layout of the area as well as the performance of existing ventilation system.

* 此數據可能會因應選擇的香味、現場環境佈局以及現有的通風系統略而出現輕微的偏差。