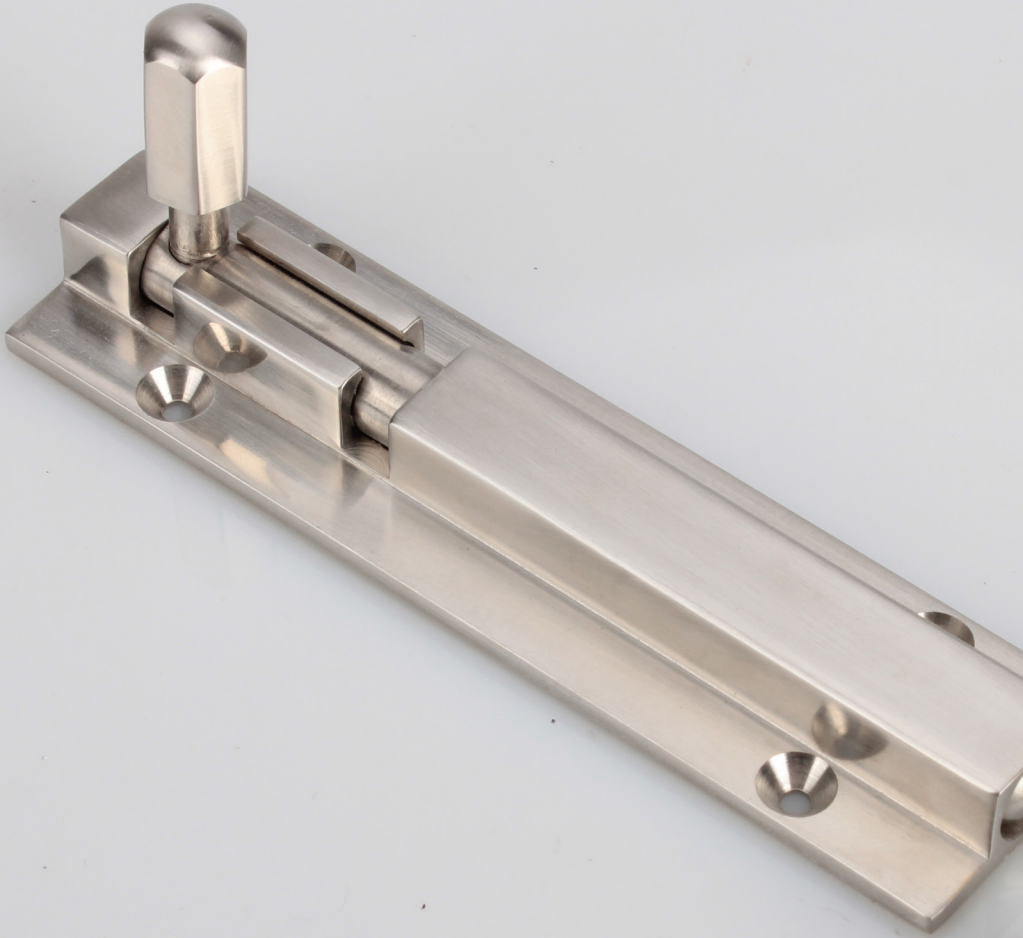


JEKE



JEKE HARDWARE LTD

www.jekehardware.com

Email: online@jekehardware.com

Jeke's extensive range of architectural hardware is produced entirely in commercial grade nonferrous metals, primarily solid brass, zinc and stainless steel. A wide choice of colours can also be applied to our quality products to create feature effects which enhance your individual design plans.

One of the greatest advantages Jeke Hardware offers specifiers and designers is the ability to produce small runs of specialized hardware. We can manufacture feature hardware to your own design.

Our company's flexible structure and commitment to serving the design industry makes us the first choice when it comes to satisfying your individual requirements.

We supplying comparatively low price products whilst maintaining high production standard. Either stock or OEM, we can help. If you require top quality hardware products, please do not hesitate to contact us to discuss your requirements.

Base Metal and Quality Finishes

Jeke's extensive range of quality hardware can be manufactured in a range of metals-brass, bronze, steel or stainless steel. A variety of production methods are used including forging, sandcasting and pressing.

CP	= Chrome Plated
PB	= Gold Plated
PN	= Matt Satin Chrome
SCP	= Satin Chrome Plated
EB	= Electro-Bronze
VB	= Vintage Bronze
BN	= Brushed Nickel
BC	= Bright Copper
PE	= Pewter
FB	= Powder Coated Dark Chocolate
WH	= Powder Coated White
BK	= Powder Coated Black
PBU	= Polished Brass Unlacquered
PBL	= Polished Brass Lacquered
PSS	= Polished Stainless Steel
SSS	= Brushed Stainless Steel
BSS	= Black Stainless Steel

Maintenance of Finishes

We are pleased to answer any enquiry on maintaining the high quality finish imparted to all Jeke Hardware products. This summary should cover most needs. A brass care leaflet is available providing detailed information on the general maintenance of brass finishes.

Chrome Plated and Satin Chrome Plated: Clean regularly with clean soapy water and soft, grit-free cloth; wipe dry.

Polished Brass: Following the polishing of brass a clear lacquer is applied. Note that this is not a permanent lacquer but serves to protect the finishing in handling and fixing by the builder. To maintain this finish use a soft, grit-free cloth.

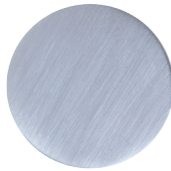
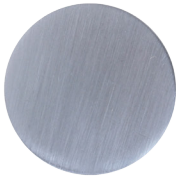
Electro Bronze: Apply a good quality silicone furniture polish using a soft, grit free cloth.

JEKE HARDWARE LTD

www.jekehardware.com
Email: online@jekehardware.com

CONTENTS

Pull Handles	Page 05
Door Hardware	Page 12
Window Fittings	Page 20
General Hardware	Page 27
Tubular Entrance Handles	Page 30
Bathroom Accessory	Page 45



FINISHES



SECTION 1 - PULL HANDLES

Pull handles (and push plates) can do more for a door than just providing a means for opening it. Coming in many varieties they will compliment a wide range of situations, or they can be tailored to suit your exact needs.

It necessary the backplates can be engraved to provide users with specific information. Standard handles can be lengthened or modified, or custom-made castings or shapes can be manufactured to personal design requirements.

PULL HANDLE

120

ZINC



Overall Length: 120mm and 143mm (2 Sizes available)
Height: 32mm
All finishes available

PULL HANDLE

165

ZINC



Overall Length: 162mm
Height: 40mm
All finishes available



HANDLE	ER4	ZINC
---------------	------------	-------------

Grip: 64mm and 96mm
All finishes available



HANDLE	ER5	ZINC
---------------	------------	-------------

Grip: 64mm, 96mm and 128mm
All finishes available



HANDLE	ER6	ZINC
---------------	------------	-------------

Grip: 64mm and 96mm
All finishes available



HANDLE	LH1	ZINC
--------	-----	------



HANDLE	CS4	ZINC
--------	-----	------



HANDLE	33150	STEEL
--------	-------	-------



GRIP HANDLE

1425

SOLID BRASS / STAINLESS



8 & 10mm sizes available

12mm diameter (recommended for lengths up to 800mm)

16mm diameter (recommended for lengths up to 1 metre)

19mm diameter (recommended for lengths from 2 metres & longer)

25mm diameter (recommended for lengths from 2 metres & longer)

50mm diameter (recommended for lengths from 2 metres & longer)

75mm diameter (recommended for lengths from 2 metres & longer)

DOOR HANDLE

1426

SOLID BRASS / STAINLESS



Rose dia. 38mm

Grip 150mm x 12mm dia.

Grip 200, 250, or 300mm x 16mm dia.

Other sizes to order

All finishes available

DOOR HANDLE

1427

SOLID BRASS / STAINLESS



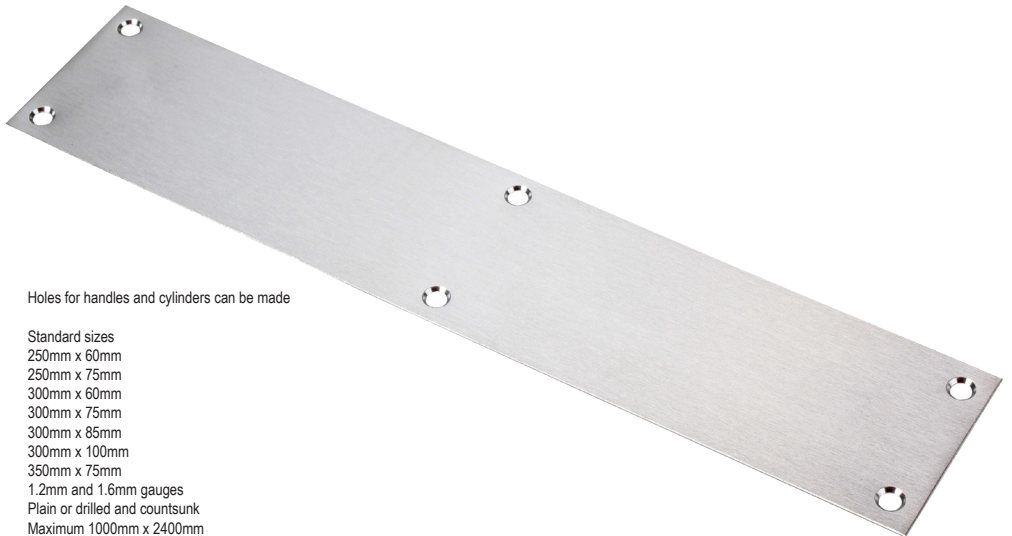
Grips: 200, 250, 300 x 16mm - Grips 150mm x 12mm

Plates 250, 300, 350 x 60mm - Plates 215mm x 50mm

Other sizes to order

Engraving also available

All finishes available including Satin Finish Stainless Steel



Holes for handles and cylinders can be made

Standard sizes

250mm x 60mm

250mm x 75mm

300mm x 60mm

300mm x 75mm

300mm x 85mm

300mm x 100mm

350mm x 75mm

1.2mm and 1.6mm gauges

Plain or drilled and countsunk

Maximum 1000mm x 2400mm

Other sizes to order

Engraved words, letters and symbols to order

Plain or enamelled infill

All finishes available



NUMBERS AND LETTERS

106

STAINLESS STEEL 304 / 316



FLUSH PULL

820

SOLID BRASS / STAINLESS



Length: 100, 200mm
Width: 50mm
Solid Brass and Stainless Steel 304 / 316 Available
All finishes available

SECTION 2 - DOOR HARDWARE

Door hardware is an essential feature of every door. It is a means to lock, open and secure a door, and is a key requirement in both commercial and domestic situations. Jeke's extensive range of door hardware covers flushbolts to doorstops.

Custom made door hardware can also be manufactured to your design and specifications.

DOOR STOP

33

STAINLESS STEEL



DOOR STOP

35

STAINLESS STEEL



DOOR STOP

51

STAINLESS STEEL



DOOR STOP

78

STAINLESS STEEL



DOOR STOP

96

ZINC



HEAVY DUTY DOOR STOP

1408

SOLID BRASS



Heavy Duty-pinned
With rubber buffer
Base 60mm x 45mm
Height 34mm
All finishes available

DOOR STOP

76

ZINC



DOOR STOP

110

STAINLESS STEEL



DOOR STOP

52

ZINC



DOOR STOP

151

ZINC



DOOR STOP

99

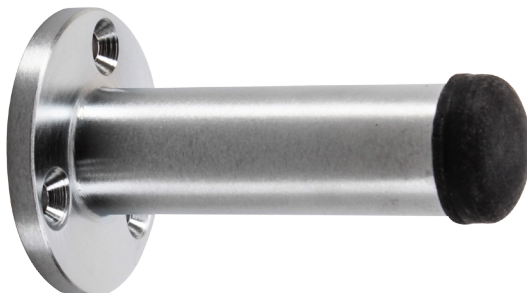
STAINLESS STEEL



DOOR STOP

1086

SOLID BRASS



FRENCH DOOR FASTENER

26

ZINC

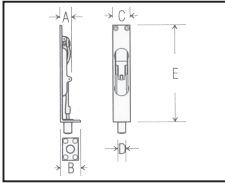
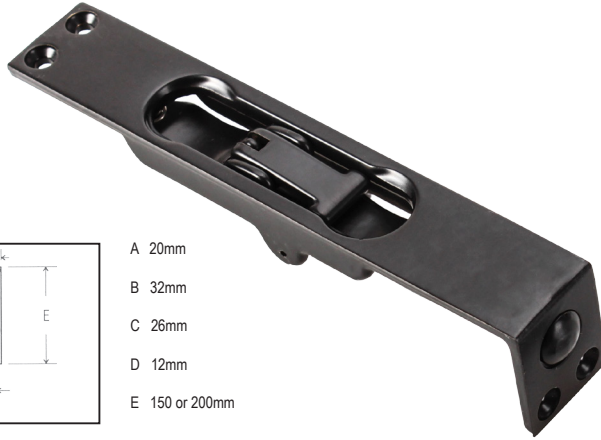


SOCKET BOLT

7150

SOLID BRASS / STAINLESS



FLUSH DOOR BOLT**1240****SOLID BRASS**

- A 20mm
- B 32mm
- C 26mm
- D 12mm
- E 150 or 200mm

Flush

For timber doors

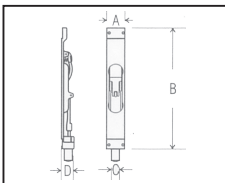
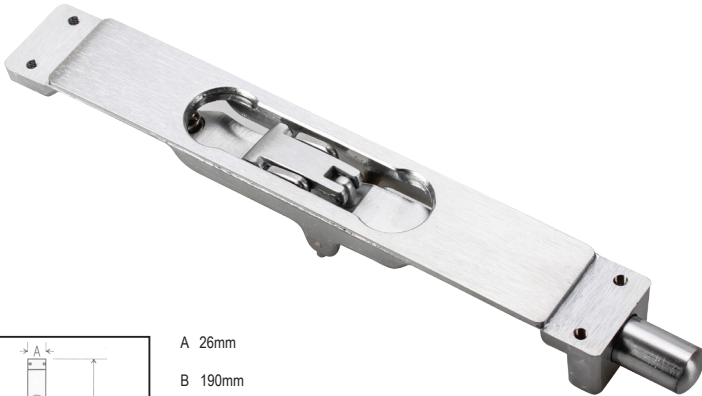
Length 150 or 200mm, Plate 25mm x 35mm

Can be used in conjunction with floor

Dust Excluding Sockets 131C & 131T

Other sizes to order

All finishes available

FLUSH DOOR BOLT**1246****SOLID BRASS**

- A 26mm
- B 190mm
- C 12mm
- D 23mm

Flush

For metal door with recessed ends

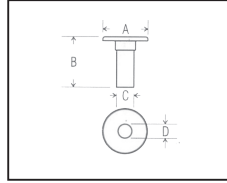
Length 190mm, 26mm wide, 23mm deep

Can be used in conjunction with floor

Dust Excluding Sockets 131C & 131T

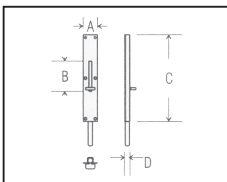
Other sizes to order

All finishes available

FLOOR DUST SOCKET**131C****SOLID BRASS**

- A 45mm
- B 50mm
- C 19mm
- D 10 - 12mm

Dust excluding
 Used in conjunction with Flush Bolts and Socket Bolts
 For concrete floors. 10mm and 12mm shoots
 Flange 45mm dia., depth 50mm
 Larger sizes available. Flange - smaller dia. available
 All finishes available

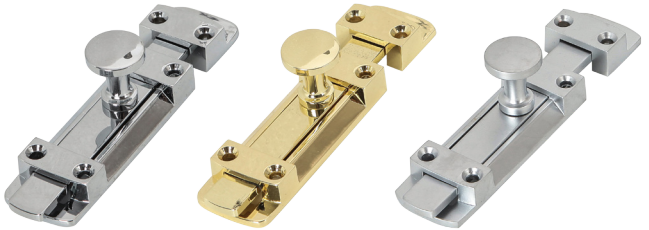
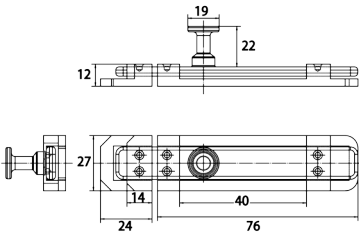
**LONG THROW SLIDE BOLT****1672****SOLID BRASS**

- A 38mm
- B 55mm
- C 230mm
- D 12mm

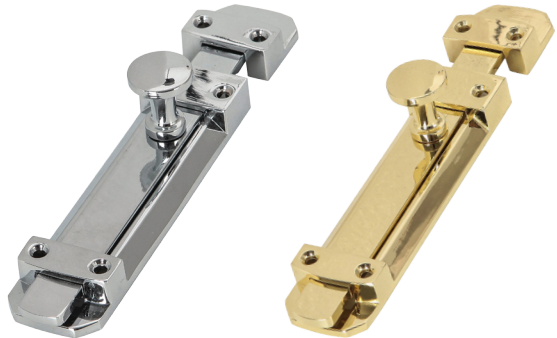
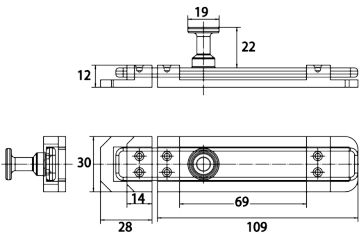
230mm long x 38mm wide x 12mm shoot, throw 55mm
 All finishes available



SLIDE BOLT 100MM	89	ZINC
-------------------------	-----------	-------------



SLIDE BOLT 150MM	90	ZINC
-------------------------	-----------	-------------



CABIN HOOK

108R

BRASS / STAINLESS 316



INDICATOR LOCK

75

ZINC

INDICATOR LOCK

135

STAINLESS



SECTION 3 - WINDOW FITTINGS

Jeke's ability to manufacture window fittings has placed it as a leader in commercial and domestic hardware. Fittings range from double pulley and catch systems for fanlight windows to basic wedge fasteners for casement windows.

All fittings can be modified to suit a particular application, and Jeke Hardware boasts a proud heritage of reproducing old patterns and castings to your design specifications.

SASH LIFT

LS2

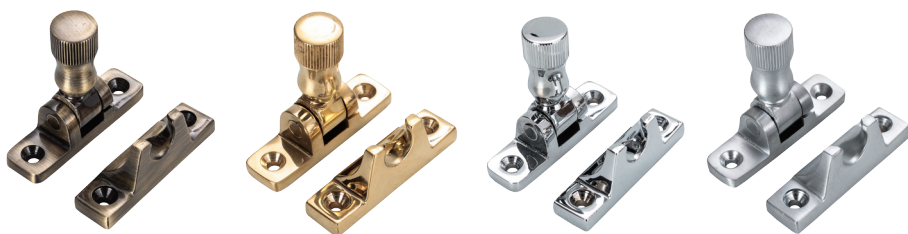
SOLID BRASS



BRIGHTON FASTENER

LS3

SOLID BRASS



WEDGE FASTENER

20

SOLID BRASS



SPUR FASTENER

24

SOLID BRASS



SPLIT RAIL FASTENER

133

SOLID BRASS



Weather seal block illustrated

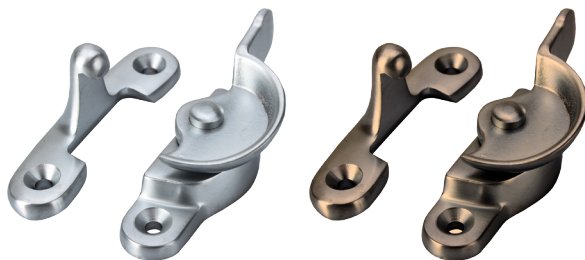
Left or right handed. Must specify handing details

All finishes available. Now available with block suitable for weather seals or standard

DOUBLE HUNG SASH FASTENER

1018

SOLID BRASS



Double hung sash fastener

Length 67mm

Width 21mm

All finishes available

SASH LIFT

1048

SOLID BRASS



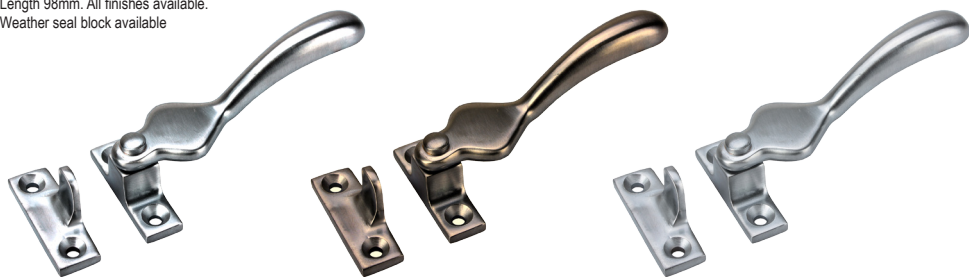
Width 44mm. Height 20mm

For overhang sashes

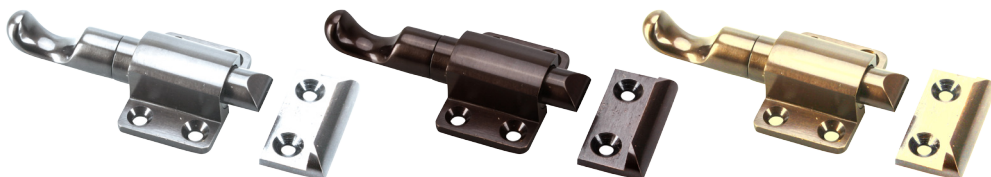
All finishes available

WEDGE FASTENER**4104****SOLID BRASS**

Length 98mm. All finishes available.
Weather seal block available

**SPRING CATCH****4106****SOLID BRASS**

Spring-loaded. Self-latching
68mm x 40mm
Chain adapted for easy reach
All finishes available

**TELESCOPIC STAY****4103****SOLID BRASS**

Short Version Length 130mm, Standard Version Length 230mm. Other sizes available
Alternative brackets to fit aluminium windows
All finishes available



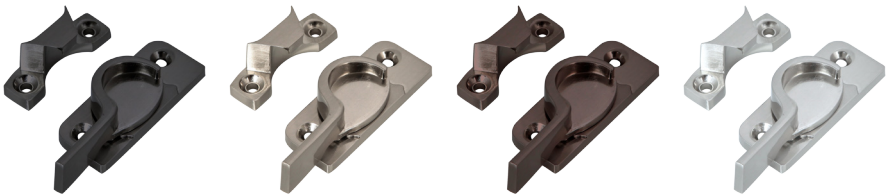
TELESCOPIC STAY**10****BRASS / ZINC**

Short Version, Standard Version and other sizes available
Alternative brackets to fit aluminium windows
All finishes available

WEDGE FASTENER**121****ZINC**

SPLIT RAIL FASTENER**122****ZINC**

Left or right handed. Must specify handing details
All finishes available.

CRESCENT FASTENER**127****ZINC****QUADRANT STAY****150****ZINC**

FANLIGHT STAY**130****BRASS / ZINC**

Short Version Length 160mm and Long Version Length 300mm available
All finishes available.

Fanlight stay works for awning windows only

CASEMENT STAY**180****BRASS / ZINC**

Short Version Length 200mm and Long Version Length 360mm available
All finishes available.

Casement stay works for side hung windows only

SECTION 4 - GENERAL HARDWARE

Jeke Hardware offers an extensive range of general hardware for a multitude of situations. The general hardware range includes fittings to complement a variety of commercial and domestic environments.

Jeke Hardware specializes in supplying everything from stock items to custom made or modified designs to suit specific requirements and applications.

HINGES

84

STAINLESS STEEL



75 x 50mm available
Other Size available upon request

TOWEL RAIL

101

ALUMINIUM / STEEL



Standard Sizes: 230mm / 300mm / 400mm / 450mm / 530mm / 600mm / 760mm
Other Size and finish available upon request

HINGE

155

SOLID BRASS



100 x 75mm and 90 x 60mm available
All finishes available.

COAT AND HAT HOOK

291

ZINC



ROBE HOOK

292

ZINC



ROBE HOOK

118

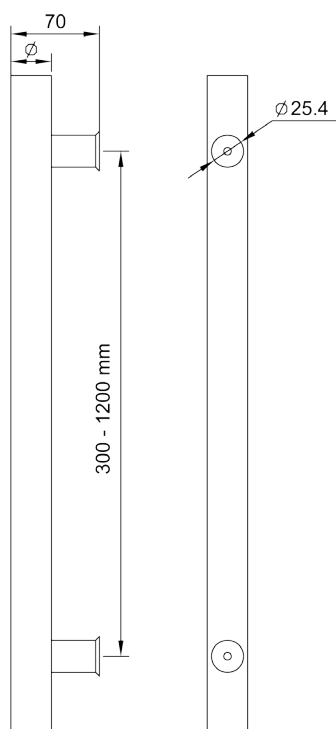
STAINLESS STEEL 304 / 316



SECTION 5 - TUBULAR HANDLES

These handles are made to our clients needs. Bent, cut, welded offset or curved and straight.

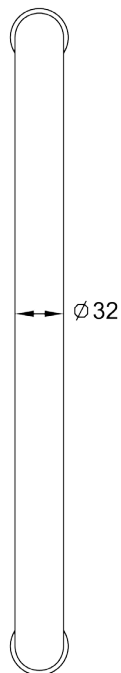
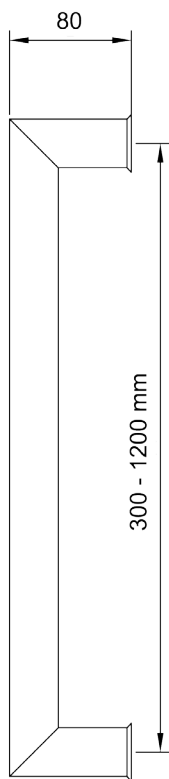
They come in various shapes and sizes. All spec's to our clients needs. Design you concept or choose from our basic range.

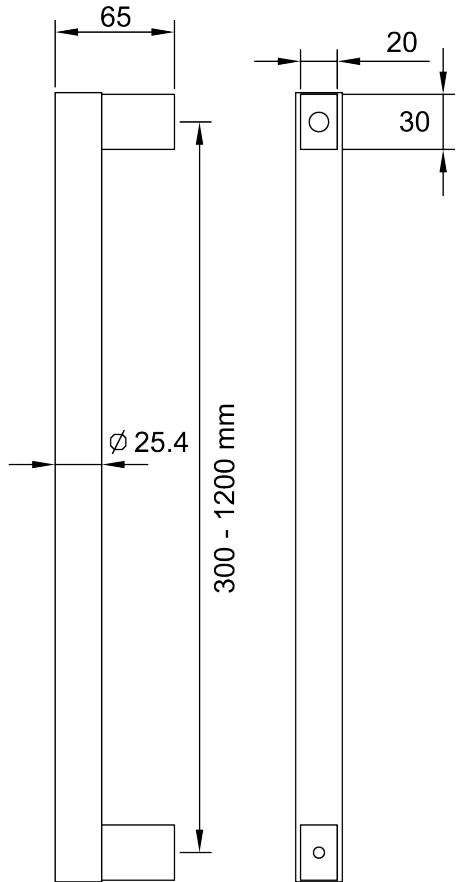


TUBULAR HANDLES

DP2

STAINLESS STEEL 316

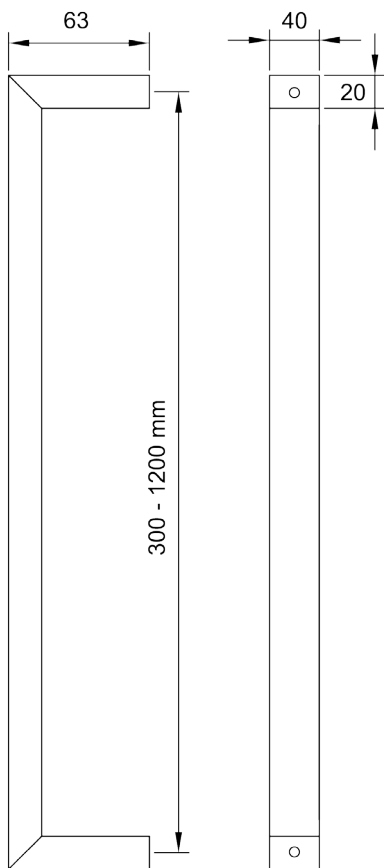
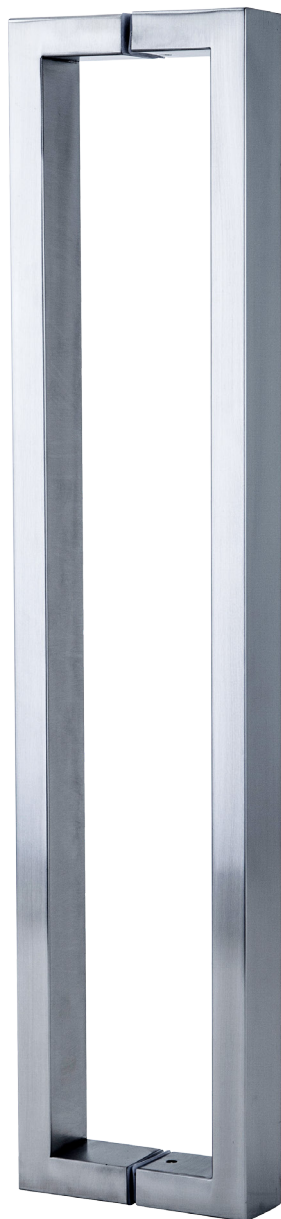


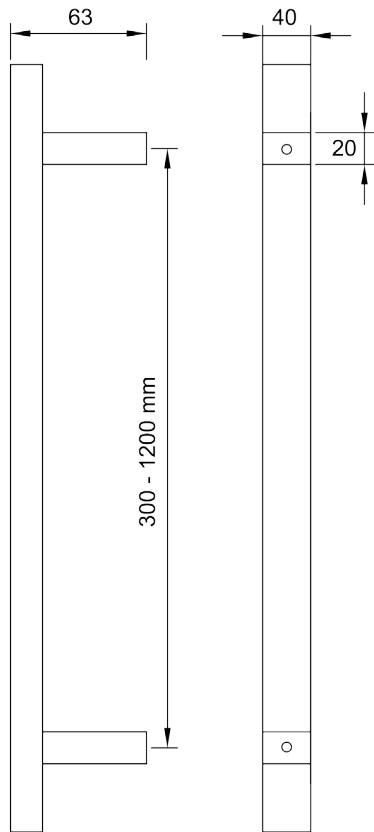


TUBULAR HANDLES

DP4

STAINLESS STEEL 316

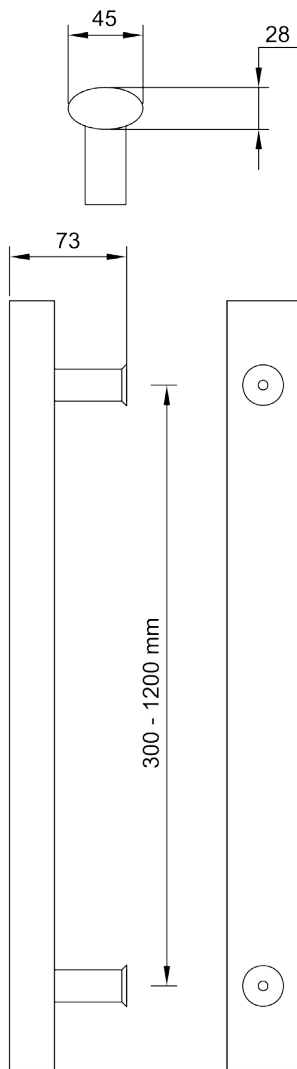


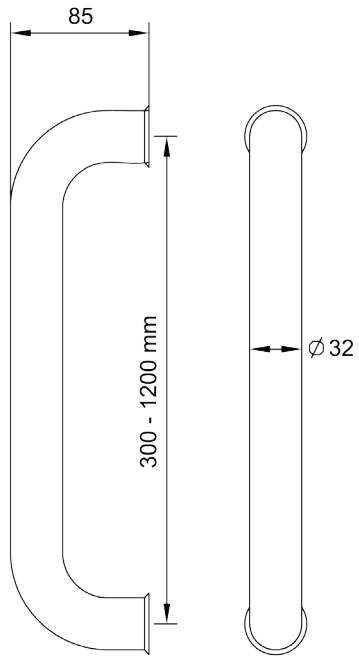


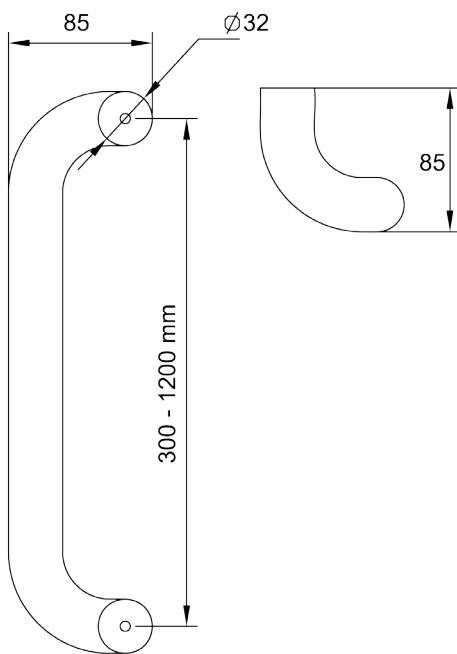
TUBULAR HANDLES

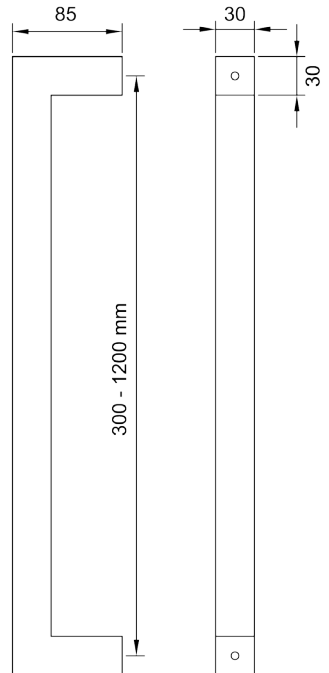
DP6

STAINLESS STEEL 316





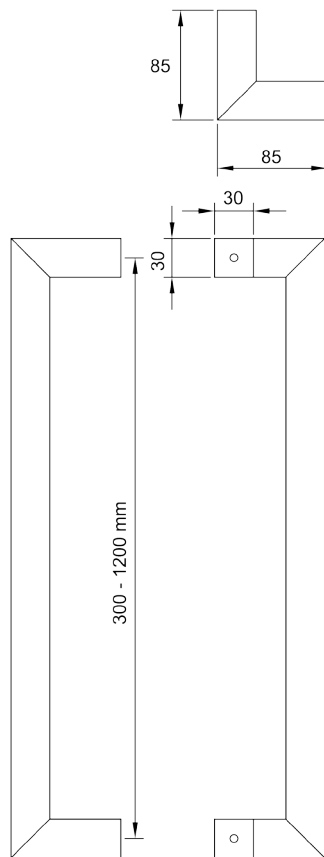


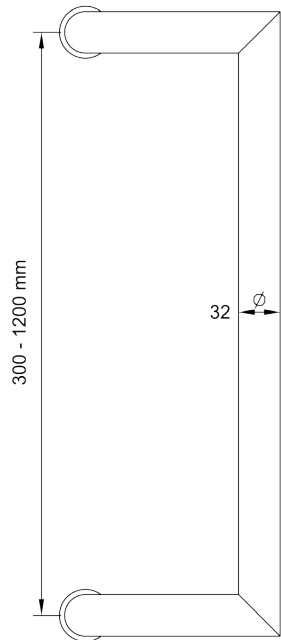
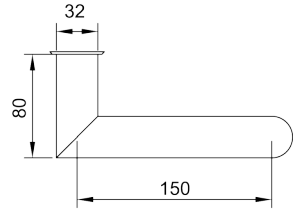
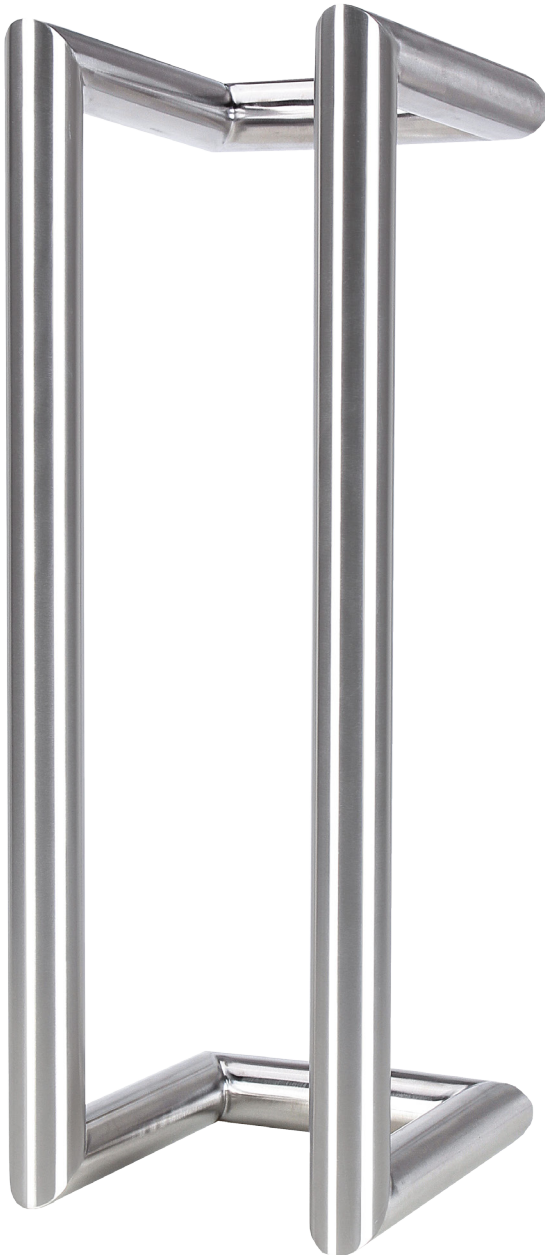


TUBULAR HANDLES

DP10

STAINLESS STEEL 316

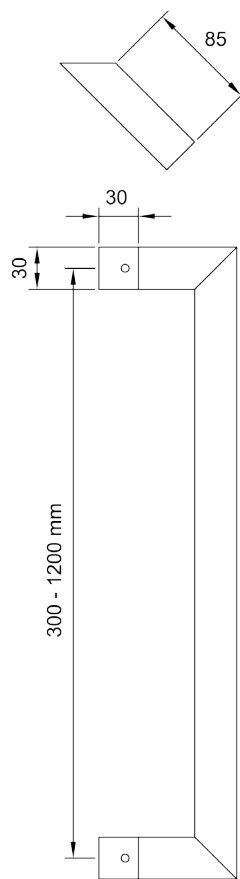


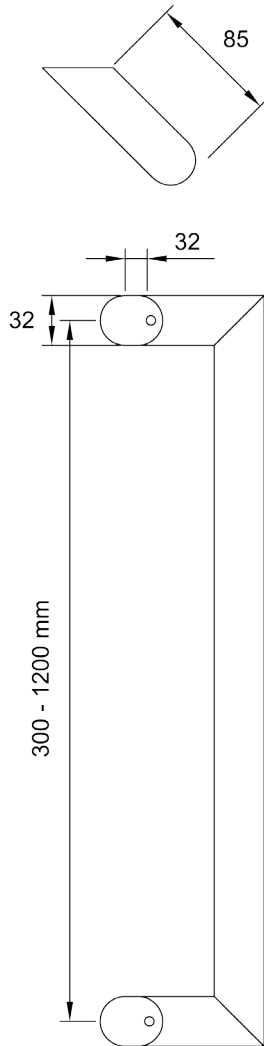
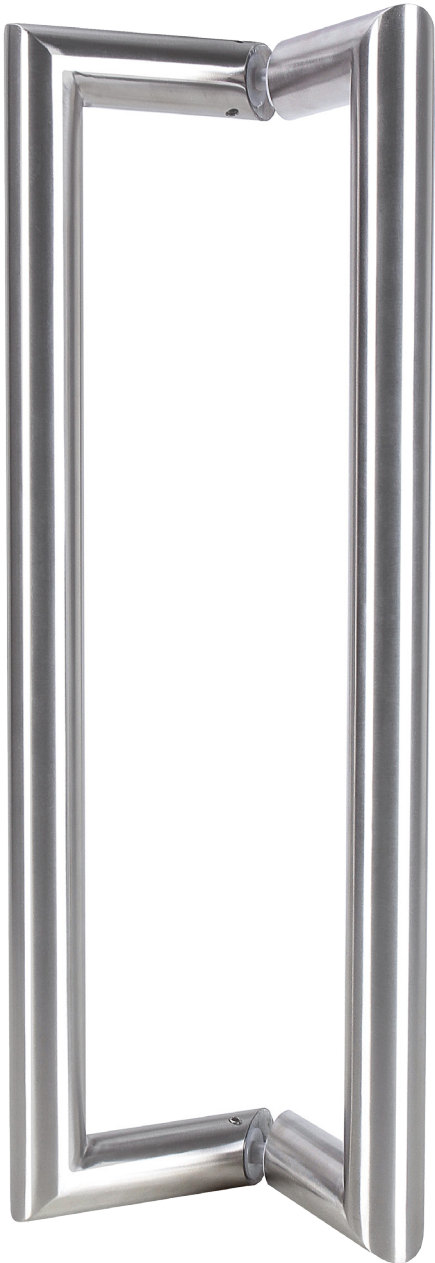


TUBULAR HANDLES

DP12

STAINLESS STEEL 316







600MM TOWEL RAIL**R1****ZINC / BRASS**

Material: Zinc & Stainless Steel
L x W x H: 600 x 50 x 75mm
Finishes: Chrome

**TOWEL RING****R4****ZINC / BRASS**

Material: Zinc & Stainless Steel
L x W x H: 165 x 165 x 75mm
Finishes: Chrome

**ROBE HOOK****R7****ZINC / BRASS**

Material: Zinc & Stainless Steel
L x W x H: 50 x 50 x 47mm
Finishes: Chrome

**TOILET ROLL HOLDER****R8****ZINC / BRASS**

Material: Zinc & Stainless Steel
L x W x H: 170 x 80 x 75mm
Finishes: Chrome



600MM TOWEL RAIL**L1****STAINLESS STEEL**

Material: Stainless Steel 304
L x W x H: 630 x 60 x 85mm
Finishes: * Polished Stainless Steel
* Brushed Stainless Steel

**TOWEL RING****L4****STAINLESS STEEL**

Material: Stainless Steel 304
L x W x H: 200 x 170 x 60mm
Finishes: * Polished Stainless Steel
* Brushed Stainless Steel

**ROBE HOOK****L7****STAINLESS STEEL**

Material: Stainless Steel 304
L x W x H: 60 x 32 x 50mm
Finishes: * Polished Stainless Steel
* Brushed Stainless Steel

**TOILET ROLL HOLDER****L8****STAINLESS STEEL**

Material: Stainless Steel 304
L x W x H: 100 x 170 x 60mm
Finishes: * Polished Stainless Steel
* Brushed Stainless Steel



600MM TOWEL RAIL**LS1****STAINLESS STEEL**

Material: Stainless Steel 304
L x W x H: 640 x 50 x 85mm
C/C: 590mm
Finishes: * Polished Stainless Steel
* Brushed Stainless Steel

**TOWEL RING****LS4****STAINLESS STEEL**

Material: Stainless Steel 304
L x W x H: 195 x 180 x 80mm
Finishes: * Polished Stainless Steel
* Brushed Stainless Steel

**ROBE HOOK****LS7****STAINLESS STEEL**

Material: Stainless Steel 304
L x W x H: 60 x 50 x 50mm
Finishes: * Polished Stainless Steel
* Brushed Stainless Steel

**TOILET ROLL HOLDER****LS8****STAINLESS STEEL**

Material: Stainless Steel 304
L x W x H: 60 x 170 x 55mm
Finishes: * Polished Stainless Steel
* Brushed Stainless Steel



TOILET ROLL HOLDER

93

STEEL



TOILET ROLL HOLDER

98

STEEL



SHOWER BASKET

BSK

SOLID BRASS



SAFETY GRAB RAIL

GBR

STAINLESS STEEL



THANK YOU

Please visit our website for more high quality products

www.jekehardware.com

Email: online@jekehardware.com

www.jekehardware.com