

CONTENTS

ABOUT DONG CHING P07

WOOD TILE P12

| | |
|----------------------------|-----|
| AT208001-05 / 20x80cm | P13 |
| AT6624-25 / 60x60cm | P15 |
| EC201206-08 / 20x120cm | P17 |
| ET221201-03 / 22.5x119.5cm | P19 |
| ET231241-43 / 23.3x120cm | P21 |
| FY201216-18 / 20x120cm | P23 |
| HL155821-33 / 15.3x58.9cm | P25 |
| IB401231-32 / 40x120cm | P29 |
| KA159002-03 / 15x90cm | P31 |
| KA231201-08 / 23.3x120cm | P33 |
| KB61211-12 / 60x120cm | P37 |
| LY61201 / 60x120cm | P39 |
| NB201201-05 / 20x120cm | P41 |
| NB301201-05 / 30x120cm | P41 |
| RO601246-47 / 60x120cm | P43 |
| SC301501-3 / 30x150cm | P45 |
| VII59031-36 / 15x90cm | P47 |
| VI301506-07 / 30x150cm | P51 |

STONE P52

| | |
|------------------------|-----|
| AT306041-54 / 30x60cm | P55 |
| AT61236-38 / 60x120cm | P57 |
| AT61260-63 / 60x120cm | P59 |
| AZ601271-74 / 60x120cm | P61 |
| CG3626-28 / 30x60cm | P63 |
| CG601201-04 / 60x120cm | P65 |
| CG1201 / 120x120cm | P65 |
| CI601201-11 / 60x120cm | P67 |
| CS306020-33 / 30x60cm | P69 |
| CS601220-33 / 60x120cm | P69 |
| ED601201-02 / 60x120cm | P73 |
| ED61211-14 / 60x120cm | P75 |
| ET3601-04 / 30x60cm | P77 |

| | |
|----------------------|-----|
| FY30616-19 / 30x60cm | P79 |
|----------------------|-----|

| | |
|-----------------------|-----|
| FY61216-17 / 60x120cm | P79 |
|-----------------------|-----|

| | |
|---------------------|-----|
| GU6601-86 / 60x60cm | P81 |
|---------------------|-----|

| | |
|---------------------|-----|
| GU3601-86 / 30x60cm | P81 |
|---------------------|-----|

| | |
|-----------------------|-----|
| GU306081-84 / 30x60cm | P97 |
|-----------------------|-----|

| | |
|---------------------|-----|
| GU6081-84 / 60x60cm | P97 |
|---------------------|-----|

| | |
|------------------------|-----|
| GU601216-18 / 60x120cm | P99 |
|------------------------|-----|

| | |
|---------------------|------|
| IB601221 / 60x120cm | P101 |
|---------------------|------|

| | |
|------------------------|------|
| IN601231-36 / 60x120cm | P103 |
|------------------------|------|

| | |
|-----------------------|------|
| KB61231-33 / 60x120cm | P105 |
|-----------------------|------|

| | |
|-----------------------|------|
| NB61201-73 / 60x120cm | P107 |
|-----------------------|------|

| | |
|--------------------|------|
| NR1221 / 120x120cm | P119 |
|--------------------|------|

| | |
|--------------------|------|
| NR60121 / 60x120cm | P119 |
|--------------------|------|

| | |
|------------------------|------|
| RO401201-36 / 40x120cm | P121 |
|------------------------|------|

| | |
|------------------------|------|
| VI601201-55 / 60x120cm | P129 |
|------------------------|------|

CEMENT & LIMEPAINT P140

| | |
|------------------------|------|
| GU601211-12 / 60x120cm | P143 |
|------------------------|------|

| | |
|------------------|------|
| LY8882 / 80x80cm | P145 |
|------------------|------|

| | |
|-----------------------|------|
| NB61216-69 / 60x120cm | P147 |
|-----------------------|------|

| | |
|---------------------|------|
| RO401241 / 40x120cm | P153 |
|---------------------|------|

| | |
|-----------------------|------|
| VIII01-09 / 100x100cm | P155 |
|-----------------------|------|

MARBLE P158

| | |
|------------------------|------|
| AE601261-62 / 60x120cm | P161 |
|------------------------|------|

| | |
|-----------------------|------|
| BT61241-43 / 60x120cm | P163 |
|-----------------------|------|

| | |
|--------------------|------|
| GU61201 / 60x120cm | P165 |
|--------------------|------|

| | |
|-----------------------|------|
| IN306011-28 / 30x60cm | P167 |
|-----------------------|------|

| | |
|---------------------|------|
| IN6013-18 / 60x60cm | P171 |
|---------------------|------|

| | |
|---------------------|------|
| IN8011-15 / 80x80cm | P173 |
|---------------------|------|

| | |
|------------------------|------|
| IN601211-16 / 60x120cm | P175 |
|------------------------|------|

| | |
|--------------------|------|
| KB61236 / 60x120cm | P177 |
|--------------------|------|

| | |
|---------------------|------|
| LY8801-06 / 80x80cm | P179 |
|---------------------|------|

| | |
|--------------------|------|
| LY61217 / 60x120cm | P179 |
|--------------------|------|

| | |
|-----------------------|------|
| NB61281-88 / 60x120cm | P181 |
|-----------------------|------|

| | |
|--------------------|------|
| PR1216 / 120x120cm | P183 |
|--------------------|------|

| | |
|---------------------|------|
| RO401221 / 40x120cm | P185 |
|---------------------|------|

| | |
|--------------------|------|
| VIII32 / 100x100cm | P187 |
|--------------------|------|

EXTERNAL TILE P188

| | |
|-----------------------|------|
| BT175201-64 / 17x52cm | P191 |
|-----------------------|------|

| | |
|---------------------|------|
| BT72801-03 / 7x28cm | P201 |
|---------------------|------|

| | |
|---------------------|------|
| BT83301-05 / 8x33cm | P203 |
|---------------------|------|

ARCHAISTIC P204

| | |
|-----------------------|------|
| AB454501-02 / 45x45cm | P207 |
|-----------------------|------|

| | |
|---------------|------|
| AB801 / 8x8cm | P207 |
|---------------|------|

| | |
|-----------------------------|------|
| GA331506-07 / 33.15x33.15cm | P209 |
|-----------------------------|------|

| | |
|----------------------|------|
| NBM1501-03 / 15x15cm | P211 |
|----------------------|------|

| | |
|------------------------|------|
| NBM153001-03 / 15x30cm | P211 |
|------------------------|------|

| | |
|----------------------|------|
| NBM3001-03 / 30x30cm | P211 |
|----------------------|------|

CONTEMPORARY P212

| | |
|---------------------|------|
| AT6622-23 / 60x60cm | P215 |
|---------------------|------|

| | |
|---------------------|------|
| BT52501-12 / 5x25cm | P217 |
|---------------------|------|

| | |
|----------------------|------|
| BT7301-29 / 7.5x30cm | P219 |
|----------------------|------|

| | |
|---------------------|------|
| CI52521-33 / 5x25cm | P225 |
|---------------------|------|

| | |
|-----------------------|------|
| CI75301-04 / 7.5x30cm | P227 |
|-----------------------|------|

| | |
|----------------------|------|
| CR5801 / 58.5x58.5cm | P229 |
|----------------------|------|

| | |
|--------------------------|------|
| EE463701-06 / 4.6x37.5cm | P231 |
|--------------------------|------|

| | |
|---------------------|------|
| EQ1011-16 / 10x10cm | P233 |
|---------------------|------|

| | |
|-----------------------|------|
| EQ75601-04 / 7.5x60cm | P235 |
|-----------------------|------|

| | |
|-----------------------|------|
| SNI02001-23 / 10x20cm | P237 |
|-----------------------|------|

| | |
|----------------------|------|
| FY30931-33 / 30x90cm | P241 |
|----------------------|------|

| | |
|--------------------------|------|
| FY61246-1A-1B / 60x120cm | P243 |
|--------------------------|------|

| | |
|--------------------------|------|
| GA16501-02 / 16.5x16.5cm | P245 |
|--------------------------|------|

| | |
|-------------------------|------|
| GA326201-17 / 32x62.5cm | P247 |
|-------------------------|------|

| | |
|-----------------------------|------|
| GA331501-13 / 33.15x33.15cm | P251 |
|-----------------------------|------|

| | |
|-------------------------|------|
| KE2361-63 / 23.2x26.7cm | P255 |
|-------------------------|------|

| | |
|-----------------------|------|
| MP222501-06 / 22x25cm | P257 |
|-----------------------|------|

| | |
|----------------------------|------|
| NB61276-1A-78 特 / 60x120cm | P259 |
|----------------------------|------|

| | |
|------------------------|------|
| RI15731-44 / 15x17.3cm | P265 |
|------------------------|------|

| | |
|---------------------------|------|
| XC2081-88 / 20.5x20.5x1cm | P267 |
|---------------------------|------|

SIZE CHART P270



LA CERAMICA: UNA SCELTA SICURA.

CERAMICS: A CHOICE YOU CAN RELY ON.

LA CÉRAMIQUE : UN CHOIX SÛR. / KERAMIK: IMMER EINE GUTE WAHL.

照片來源: NOVABELL CERAMICHE 提供

TERMINOLOGY

-  吸水率
-  止滑度 R
-  摩氏硬度 (表面硬度)
-  PEI (表面硬度)
-  壁磚
-  地磚
-  立體面
-  修邊磚
-  PR 石英磚 Porcelain
-  WB 白胚底 White Body
-  RB 紅胚底 Red Body
-  Gloss 亮面
-  半拋面 Laapato
-  全釉拋 Semi-Polished
-  拋光面 Full Polished
-  霧面 Matt
-  V1 (底色(濃淡)變化性)
-  V2 (底色(濃淡)變化性)
-  V3 (底色(濃淡)變化性)
-  V4 (底色(濃淡)變化性)
-  FB 透亮材質 Full Body
-  CB Color Body

PEI 等級分類如下

| PEI 級數 | 鋪貼規範 | 使用區域 |
|--------|------------|-------------------------------|
| 1 | 不得使用地板 | 只得使用在居家或商業室內空間的牆壁 |
| 2 | 輕度使用空間 | 可使用在輕度空間的牆壁跟地板，例如：居家室內廁所 |
| 3 | 輕度至中度使用空間 | 可用於一般使用空間的檯面，牆壁跟地板 |
| 4 | 中度至重度使用空間 | 所有居家空間及輕度使用的商業空間地板的使用，例如：餐廳 |
| 5 | 重度至極重度使用空間 | 主要使用於繁忙的商用及公共空間地板。例如：購物商場，人行道 |

美國磁磚色彩變化指南 / 窯變

所有磁磚每一批生產出來的顏色都有少許的誤差，其判定模式將同一批生產出來的磁磚以一公尺平方平鋪於地板上，離三公尺觀看時若無色差，不構成色差條件。任何對於磁磚顏色的問題與疑慮應當在安裝前了解它的顏色變化特性。

其變化特性如依照色差小到大，分別為 V1-V4

| | |
|----|--|
| V1 | 外觀一致：同一生產批號的磚，色差極小。 |
| V2 | 輕微色彩差異：紋理及模面有明顯的變化性，色彩差異性較低。 |
| V3 | 中度色彩差異：較大的色差變化。同系列，磚之間的顏色有較大的色差，但可看出是同一色系。譬如，某一片磁磚上的小部分顏色是另一片磚的主要顏色。 |
| V4 | 豐富的色彩變化：每片磚的色彩差異性是隨機的，以至於會有某片磚的色彩與其他的完全不同。這樣的色彩變化性，會讓你的鋪貼完的效果獨一無二。 |

ABOUT DONG CHING



東慶建材自 1979 年創立至今，從一開始銷售國產磁磚，對於整個台灣市場流行與趨勢走向非常熟悉外；辦理歐洲進口磁磚也有 20 年的經驗。

除此之外，更積極去參觀世界各地的瓷磚大展，對於全世界瓷磚產業的設計走向、品質技術與價格瞭若指掌。所以本公司有信心能提供顧客品質優良、價格合宜的進口精品。

本公司並堅守著維護公司企業文化與顧客的品質服務精神，故拓展分公司至台中、台北，採用一貫的直營方式經營，以針對各個市場需求，提供更精緻的服務給客戶。



KTLCERAMICA

CERAMICHE
CAESAR
LA CULTURA DELLA MATERIA

LEA
CERAMICHE

keros
CERAMICA

NAVARTI

stn
CERAMICA

GUOCERA
LET'S REIMAGINE

GAYAFORES
since 1897

ARGENTA

XCLUSIVE
CERAMICA

FABRESA

BESTILE
CERÁMICAS

NovaBell
Ceramiche Gruppo Bellei

Emotion
ceramics

APE
best for you

CERAMICA EURO

HALCON
CERAMICAS

Monopole
Cerámica

CASALGRANDE PADANA
THE GREEN WAY TO PAVE

BORJA
Ceramic tiles design

cerpa
cerámica

IBERO
PORCELANICO

cifre
cerámica

Keraben

ICON
WORLD OF TILE

VITACER

prismacer
cerámica

cerámica ribesalbes

EDIMAX CERAMICHE ASTOR

EQUIPE

ECCENTRICO

rocersa
CERAMICA

AB
AZULEJOS BENADRESA, S.A.

ecoceramic
cerámica



WOOD TILE

A relaxing atmosphere

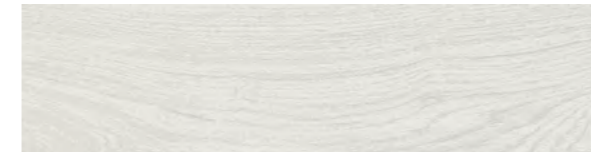


AT208004

ARGENTA

Spain 西班牙

20x80x0.67cm / 吸水率 <0.5% / MOHS 5 / 止滑度 CLASS 1 (R10) / 色變 V2 / 32 版模面 / 未修邊上釉石英磚



AT208001 / 20x80x0.67cm



AT208002 / 20x80x0.67cm



AT208003 / 20x80x0.67cm



AT208004 / 20x80x0.67cm



AT208005 / 20x80x0.67cm



Argenta is made up of a young and dynamic team, up for lifelong learning, that researches the current market and satisfies its needs with technical and aesthetical solutions. Its support for a new generation of a high added value product, the result of research and use of the highest technology, has been implemented by a highly qualified technical team that counts with an own area of design and development, showing the support for human value as the base for success.

A J S
D L U



AT6625

ARGENTA

Spain 西班牙

60x60x0.9cm / 吸水率 <0.5% / MOHS 5 / PEI 4 / 止滑度 R9 / 色變 V2 / 6 版模面 / 霧面石英磚



AT6624 / 60x60x0.9cm



AT6625 / 60x60x0.9cm



Argenta is made up of a young and dynamic team, up for lifelong learning, that researches the current market and satisfies its needs with technical and aesthetical solutions. Its support for a new generation of a high added value product, the result of research and use of the highest technology, has been implemented by a highly qualified technical team that counts with an own area of design and development, showing the support for human value as the base for success.

A J S
D L U



EC201206

ECOCERAMIC

Spain 西班牙

20x120x0.9cm / 吸水率 <0.5% / 止滑度 CLASS 3 / 色變 V2 / 42 版模面 / 遇濕止滑面 / 修邊石英磚



EC201206 / 20x120x0.9cm



EC201207 / 20x120x0.9cm



EC201208 / 20x120x0.9cm



EC201207



Our company's complete devotion to service has driven us in our continual development of new product ranges fitting the specific décor requirements of each market. It is for this reason that CARMEN CERAMIC ART has become one of the world's leading firms, having the largest number of items in its catalogue, with around 3,000 product created especially to match the peculiarities and aesthetic and functional needs of each particular market.

A J S
D L U



ET221201

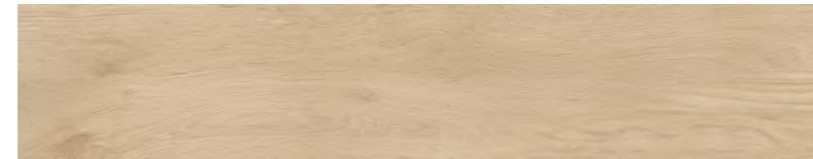
EMOTION

Spain 西班牙

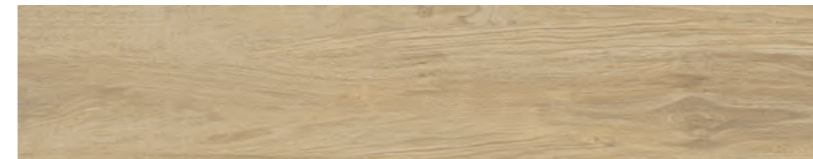
22.5x119.5x0.87cm / 吸水率 <0.5% / 止滑度 CLASS 1 / 20 版模面 / 霧面修邊石英磚



ET221201 / 22.5x119.5x0.87cm



ET221202 / 22.5x119.5x0.87cm



ET221203 / 22.5x119.5x0.87cm



ET221203



Our company's complete devotion to service has driven us in our continual development of new product ranges fitting the specific décor requirements of each market. It is for this reason that CARMEN CERAMIC ART has become one of the world's leading firms, having the largest number of items in its catalogue, with around 3,000 product created especially to match the peculiarities and aesthetic and functional needs of each particular market.

A J S
D L U



ET231242

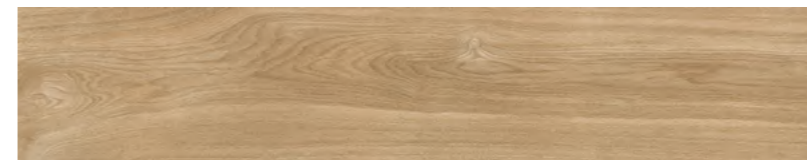
EMOTION

Spain 西班牙

23.3x120x0.87cm / 吸水率 <0.5% / PEI 4 / 止滑度 R10 / 17 版模面 / 未修邊石英磚



ET231241 / 23.3x120x0.87cm



ET231242 / 23.3x120x0.87cm



ET231243 / 23.3x120x0.87cm



ET231243



Our company's complete devotion to service has driven us in our continual development of new product ranges fitting the specific décor requirements of each market. It is for this reason that CARMEN CERAMIC ART has become one of the world's leading firms, having the largest number of items in its catalogue, with around 3,000 product created especially to match the peculiarities and aesthetic and functional needs of each particular market.

A J S
D L U



FY201216

EURO CERAMIC FLYZONE

Italy 義大利

20x120x0.9cm / 吸水率 0.1% / MOHS 6 / 止滑度 R9 / 色變 V3 / 18 版模面 / 木紋修邊石英磚



FY201216 / 20x120x0.9cm



FY201217 / 20x120x0.9cm



FY201218 / 20x120x0.9cm



FY201217



Leonardo Ceramica, leader in the production of tiles, floor coverings, ceramics and porcelain and development of technical solutions and innovative design.

A J S
D L U



HL155824

GRUPOHALCON

Spain 西班牙

15.3x58.9x0.75cm / 吸水率 <0.5% / PEI 4 / 止滑度 R10/C3 / 色變 V3 / 18 版模面 / 木紋霧面未修邊石英磚



HL155821 / 15.3x58.9x0.75cm



HL155822 / 15.3x58.9x0.75cm

期貨



HL155823 / 15.3x58.9x0.75cm



HL155824 / 15.3x58.9x0.75cm



HL155826 / 15.3x58.9x0.75cm



HL155826



We contribute to create a pleasant space to provide comfort as well as meeting our expectations about maintenance, efficiency and preservation.
Contribuimos a la creación de un espacio agradable, que aporte confort y cumpla con nuestras expectativas en cuanto a mantenimiento, rendimiento y conservación.

A J S
D L U



HL155832

GRUPOHALCON

Spain 西班牙

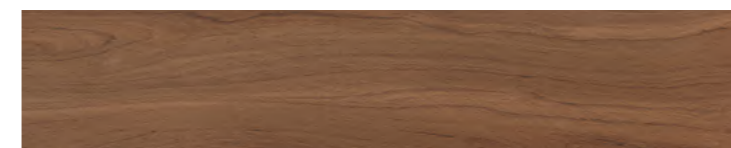
15.3x58.9x0.75cm / 吸水率 <0.5% / PEI 4 / 止滑度 R10/C3 / 色變 V3 / 13 版模面 / 木紋霧面未修邊石英磚



HL155831 / 15.3x58.9x0.75cm



HL155832 / 15.3x58.9x0.75cm



HL155833 / 15.3x58.9x0.75cm



HL155833



We contribute to create a pleasant space to provide comfort as well as meeting our expectations about maintenance, efficiency and preservation.
Contribuimos a la creación de un espacio agradable, que aporte confort y cumpla con nuestras expectativas en cuanto a mantenimiento, rendimiento y conservación.

A J S
D L U



IB401231



IB401232

IBERO

Spain 西班牙

40x120x0.98cm / 吸水率 12% < E < 18% / 色變 V4 / 9 版模面 / 3D 立體霧面修邊白胚底磚



IB401231 / 40x120x0.98cm



IB401232 / 40x120x0.98cm



We contribute to create a pleasant space to provide comfort as well as meeting our expectations about maintenance, efficiency and preservation.
Contribuimos a la creación de un espacio agradable, que aporte confort y cumpla con nuestras expectativas en cuanto a mantenimiento, rendimiento y conservación.

A J S
D L U



KA159002

KERATILE

Spain 西班牙

15x90x0.9cm / 吸水率 <0.5% / PEI 4 / 10 版模面 / 未修邊石英磚



KA159002 / 15x90x0.9cm

KA159003 / 15x90x0.9cm



We contribute to create a pleasant space to provide comfort as well as meeting our expectations about maintenance, efficiency and preservation.
Contribuimos a la creación de un espacio agradable, que aporte confort y cumpla con nuestras expectativas en cuanto a mantenimiento, rendimiento y conservación.

A J S
D L U



KA231202

照片來源：好室設計 提供

KERATILE

Spain 西班牙

23.3x120x0.97cm / 吸水率 <0.5% / PEI 4 / 12 版模面 / 未修邊石英磚



KA231201 / 23.3x120x0.97cm



KA231202 / 23.3x120x0.97cm



KA231204 / 23.3x120x0.97cm



KA231203



We contribute to create a pleasant space to provide comfort as well as meeting our expectations about maintenance, efficiency and preservation.
Contribuimos a la creación de un espacio agradable, que aporte confort y cumpla con nuestras expectativas en cuanto a mantenimiento, rendimiento y conservación.

A J S
D L U



KA231207

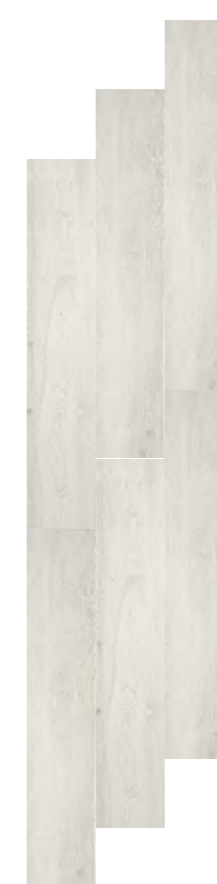
KERATILE

Spain 西班牙

23.3x120x0.97cm / 吸水率 <0.5% / PEI 4 / 12 版模面 / 未修邊木紋石英磚



KA231207 / 23.3x120x0.97cm



KA231208 / 23.3x120x0.97cm



We contribute to create a pleasant space to provide comfort as well as meeting our expectations about maintenance, efficiency and preservation.
 Contribuimos a la creación de un espacio agradable, que aporte confort y cumpla con nuestras expectativas en cuanto a mantenimiento, rendimiento y conservación.

A J S
D L U



KB61211

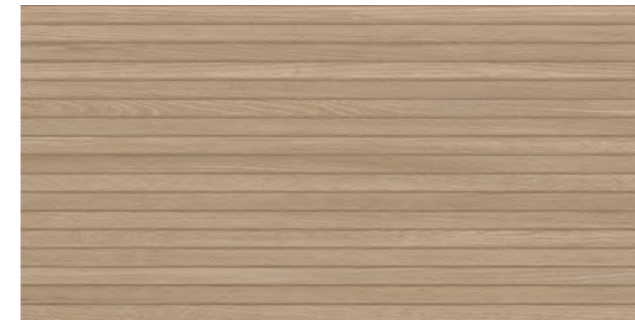
KERABEN

Spain 西班牙

60x120x1.05cm / 吸水率 <0.5% / 3 版模面 / 立體凹凸霧面石英磚 COLORBODY



KB61211 / 60x120x1.05cm



KB61212 / 60x120x1.05cm



Keraben commenced its business activity in 1974 under the name Gres de Nules. Since then, customer service and ongoing technological innovation have formed the basis of our strategy. We design and develop our products from the drawing board to production, thereby guaranteeing unique textures and patterns for each piece.

A J S
D L U

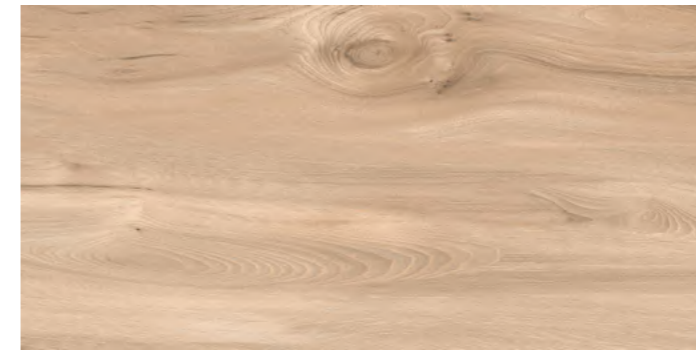


LY61201

LYCOS

India 印度

60x120x0.85cm / 吸水率 <0.5% / 6 版模面 / 木紋石英磚



LY61201 / 60x120x0.85cm



We choose only the best from nature: our granite, marble and limestone comes from quarries all over the world. We travel worldwide to hand select specific material and work closely with experienced inspectors in quarries and factories, ensuring the quality control is maintained at a consistently high level.

A J S
D L U



NOVABELL

Italy 義大利

20x120x0.9cm 48 版模面 / 30x120x0.9cm 24 版模面 / 吸水率 <0.5% / PEI 4 / 止滑度 R10 / 木紋修邊石英磚



NB201201 / 20x120x0.9cm



NB201202 / 20x120x0.9cm

期貨



NB301201 / 30x120x0.9cm



NB301202 / 30x120x0.9cm

期貨



NB201203 / 20x120x0.9cm



NB201204 / 20x120x0.9cm



NB301203 / 30x120x0.9cm



NB301204 / 30x120x0.9cm



NB201205 / 20x120x0.9cm



NB301205 / 30x120x0.95cm



NovaBell is now a solid, dynamic company that stands out for its lightning response to changing trends and technologies. The company's strength lies in its management's aptitude for teamwork, running operations in a way that combines the managerial principles of efficiency with looking after the Company's employees and the environment.

A J S
D L U



RO601246

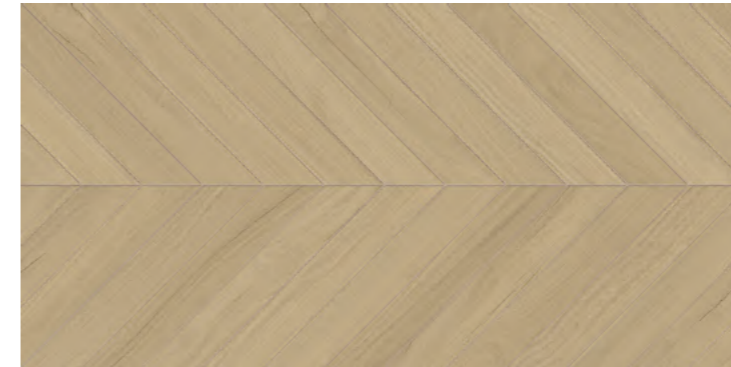


RO601247

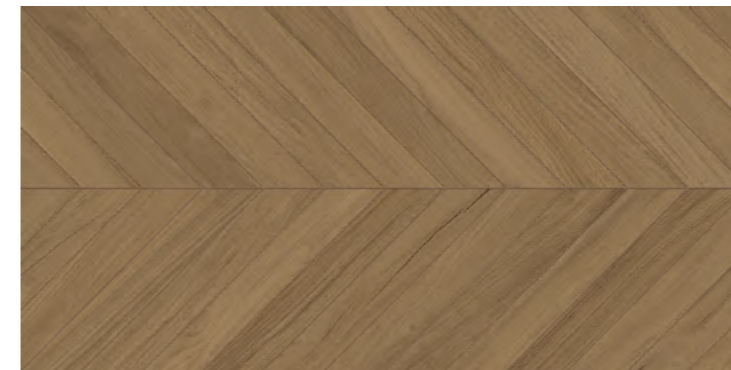
ROCERSA

Spain 西班牙

60x120x0.9cm / 吸水率 <0.5% / 止滑度 CLASS 1 / 色變 V2 / 5 版模面 / 霧面修邊石英磚



RO601246 / 60x120x0.9cm



RO601247 / 60x120x0.9cm



El Molino has been evolving incessantly since its founding in 1922, which has turned the company, created by Cipriano Castelló, into a clear and solid landmark for the ceramics industry worldwide. After nine decades of self-improvement, and thanks to the work of three generations of entrepreneurs, El Molino is today, as yesterday, a pioneering business in the promotion of ceramics as the best solution for the covering of floors and walls of all kinds of spaces.

A J S
D L U



SC301501

STN

Spain 西班牙

30x150x1cm / 吸水率 <0.5% / 止滑度 R10 / 色變 V3 / 15 版模面 / 柔霧止滑修邊石英磚



SC301501 / 30x150x1cm



SC301502 / 30x150x1cm



SC301503



El Molino has been evolving incessantly since its founding in 1922, which has turned the company, created by Cipriano Castelló, into a clear and solid landmark for the ceramics industry worldwide. After nine decades of self-improvement, and thanks to the work of three generations of entrepreneurs, El Molino is today, as yesterday, a pioneering business in the promotion of ceramics as the best solution for the covering of floors and walls of all kinds of spaces.

A J S
D L U



VII59031

VITACER

Spain 西班牙

15x90x0.9cm / 吸水率 <0.5% / 止滑度 RIO / PEI 4 / 23 版模面 / 未修邊石英磚 - 遇濕止滑面 -



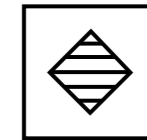
VII59031 / 15x90x0.9cm



VII59032 / 15x90x0.9cm



VII59033 / 15x90x0.9cm



SMOOTH & GRIP

* 此系列運用最新的磁磚技術，使其表面有適合室內的柔霧觸感並同時達到 RIO 的止滑效果



VII59033



El Molino has been evolving incessantly since its founding in 1922, which has turned the company, created by Cipriano Castelló, into a clear and solid landmark for the ceramics industry worldwide. After nine decades of self-improvement, and thanks to the work of three generations of entrepreneurs, El Molino is today, as yesterday, a pioneering business in the promotion of ceramics as the best solution for the covering of floors and walls of all kinds of spaces.

A J S
D L U



VII59036

VITACER

Spain 西班牙

15x90x0.9cm / 吸水率 <0.5% / PEI 4 / 23 版模面 / 未修邊石英磚



VII59036 / 15x90x0.9cm



El Molino has been evolving incessantly since its founding in 1922, which has turned the company, created by Cipriano Castelló, into a clear and solid landmark for the ceramics industry worldwide. After nine decades of self-improvement, and thanks to the work of three generations of entrepreneurs, El Molino is today, as yesterday, a pioneering business in the promotion of ceramics as the best solution for the covering of floors and walls of all kinds of spaces.

A J S
D L U



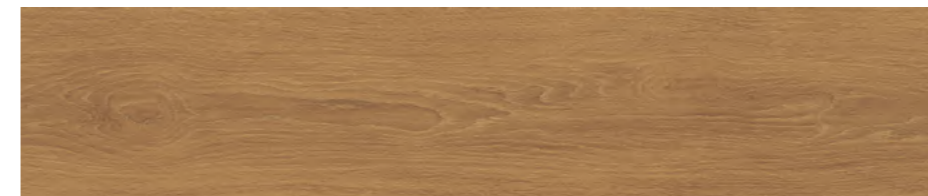
VITACER

Spain 西班牙

30x150x1cm / 吸水率 <0.5% / PEI 3-4 / 止滑度 R9 / 色變 V2 / 12 版模面 / 3D TECH 霧面石英磚



VI301506 / 30x150x1cm



VI301507 / 30x150x1cm



El Molino has been evolving incessantly since its founding in 1922, which has turned the company, created by Cipriano Castelló, into a clear and solid landmark for the ceramics industry worldwide. After nine decades of self-improvement, and thanks to the work of three generations of entrepreneurs, El Molino is today, as yesterday, a pioneering business in the promotion of ceramics as the best solution for the covering of floors and walls of all kinds of spaces.

A J S
D L U



STONE

It's about living better together



AT306053



AT306041

ARGENTA

Spain 西班牙

30x60x0.9cm / 吸水率 <0.5% / MOHS 8 / 止滑度 41~44-R10/51~54-R11 / 色變 V2 / 48 版模面 / 霧面 & 鑿面修邊石英磚



AT306041 / 30x60x0.9cm 霧面
AT601241 / 60x120x0.9cm



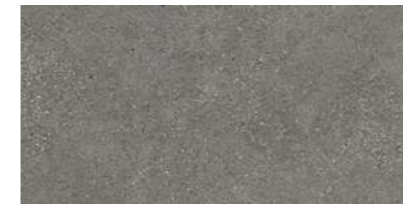
AT306051 / 30x60x0.9cm 鑿面



AT306042 / 30x60x0.9cm 霧面



AT306052 / 30x60x0.9cm 鑿面



AT306043 / 30x60x0.9cm 霧面



AT306053 / 30x60x0.9cm 鑿面



AT306044 / 30x60x0.9cm 霧面



AT306054 / 30x60x0.9cm 鑿面



Argenta is made up of a young and dynamic team, up for lifelong learning, that researches the current market and satisfies its needs with technical and aesthetical solutions. Its support for a new generation of a high added value product, the result of research and use of the highest technology, has been implemented by a highly qualified technical team that counts with an own area of design and development, showing the support for human value as the base for success.

A J S
D L U



AT61236

ARGENTA

Spain 西班牙

60x120x0.9cm / 吸水率 <0.5% / 色變 V3 / 14 版模面 / COLORBODY 修邊石英磚



AR·TECH

DIGITAL
SURFACE
TECHNOLOGY
BY ARGENTA



AT61236 / 60x120x0.9cm



AT61237 / 60x120x0.9cm



AT61238 / 60x120x0.9cm



AT61237



Argenta is made up of a young and dynamic team, up for lifelong learning, that researches the current market and satisfies its needs with technical and aesthetical solutions. Its support for a new generation of a high added value product, the result of research and use of the highest technology, has been implemented by a highly qualified technical team that counts with an own area of design and development, showing the support for human value as the base for success.

A J S
D L U



AT61261

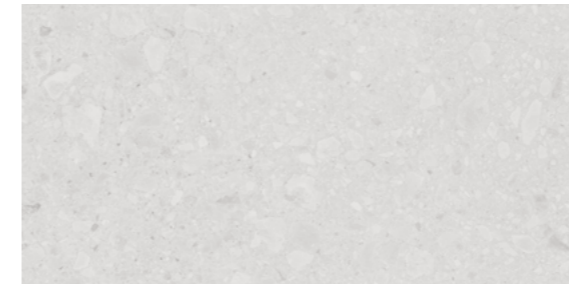


AT61262

ARGENTA

Spain 西班牙

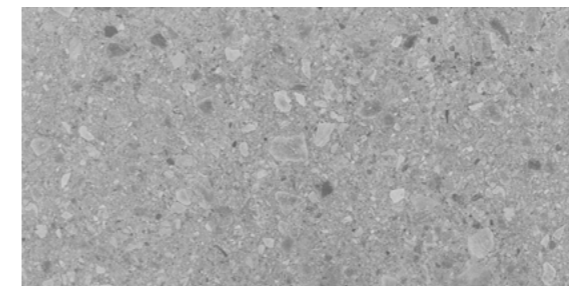
60x120x0.9cm / 吸水率 <0.5% / MOHS 8 / PEI 4 / 止滑度 R10 / 色變 V2 / 9 版模面 / 修邊石英磚



AT61260 / 60x120x0.9cm



AT61261 / 60x120x0.9cm

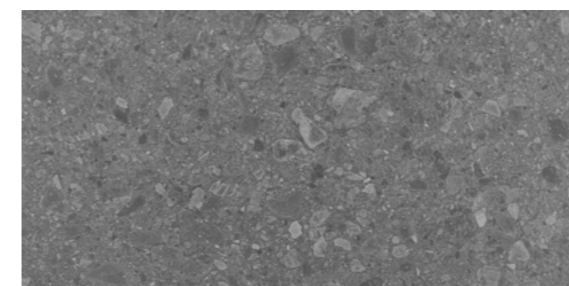


AT61262 / 60x120x0.9cm

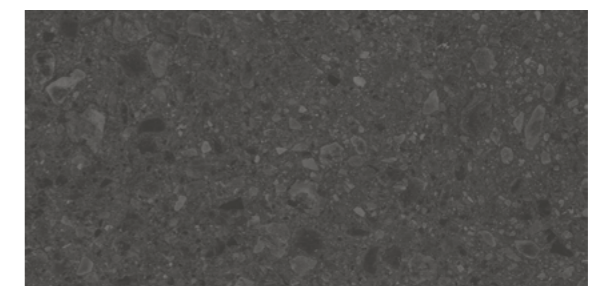


EARTH / 60x120x0.9cm

期貨



AT61263 / 60x120x0.9cm



NIGHT / 60x120x0.9cm

期貨



Argenta is made up of a young and dynamic team, up for lifelong learning, that researches the current market and satisfies its needs with technical and aesthetical solutions. Its support for a new generation of a high added value product, the result of research and use of the highest technology, has been implemented by a highly qualified technical team that counts with an own area of design and development, showing the support for human value as the base for success.

A J S
D L U

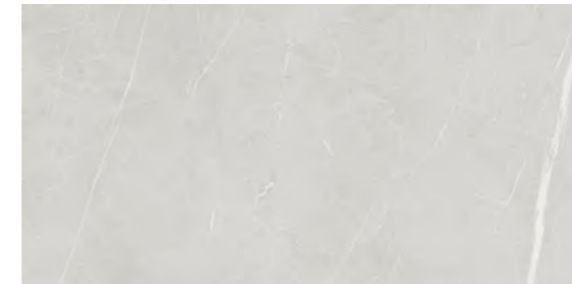


AZ601271

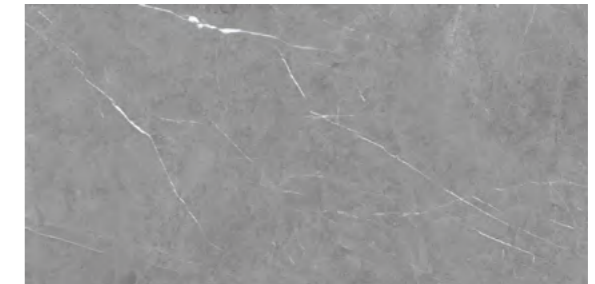
AZULEJOS BENADRESA

Spain 西班牙

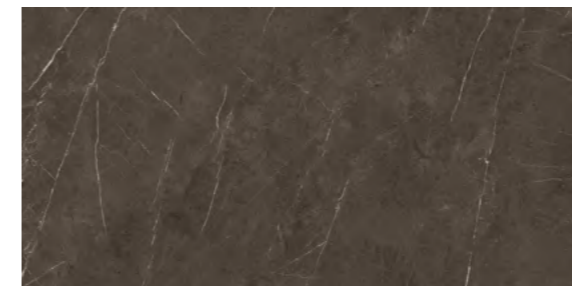
60x120x0.93cm / 吸水率 <0.5% / PEI 3-4 / 止滑度 C1 / 色變 V3 / 16 版模面 / 修邊石英磚 - 自然面 -



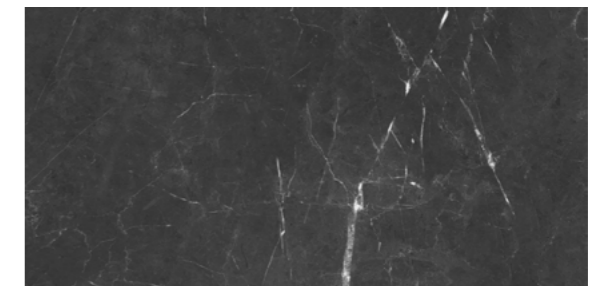
AZ601271 / 60x120x0.93cm



AZ601272 / 60x120x0.93cm



AZ601273 / 60x120x0.93cm



AZ601274 / 60x120x0.93cm



AZ601273

Argenta is made up of a young and dynamic team, up for lifelong learning, that researches the current market and satisfies its needs with technical and aesthetical solutions. Its support for a new generation of a high added value product, the result of research and use of the highest technology, has been implemented by a highly qualified technical team that counts with an own area of design and development, showing the support for human value as the base for success.



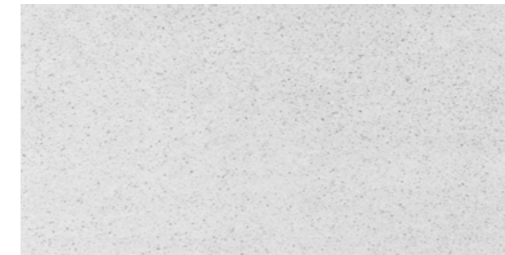


CG3626 / CG3628

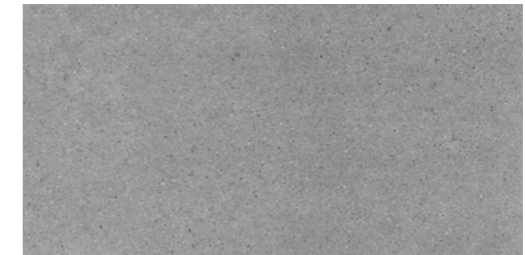
CASALGRANDE PADANA

Italy 義大利

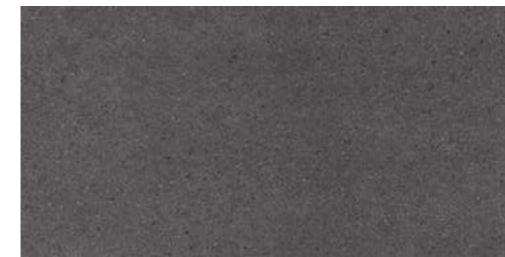
30x60x0.9cm 16 版模面 / 吸水率 <0.5% / 止滑度 RIOA / 霧面修邊透心石英磚



CG3626 / 30x60x0.9cm



CG3627 / 30x60x0.9cm



CG3628 / 30x60x0.9cm

Argenta is made up of a young and dynamic team, up for lifelong learning, that researches the current market and satisfies its needs with technical and aesthetical solutions. Its support for a new generation of a high added value product, the result of research and use of the highest technology, has been implemented by a highly qualified technical team that counts with an own area of design and development, showing the support for human value as the base for success.

A J S
D L U

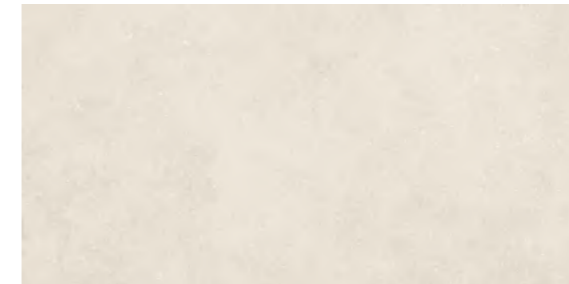


CG601203

CASALGRANDE PADANA

Italy 義大利

60x120x0.9cm / 吸水率 <0.1% / 止滑度 自然面 -R10 斬石橫紋面 & 斜紋面 -R10A+B / 修邊石英磚



CG601201 自然面 / 60x120x0.9cm
CG601201-1 橫紋鑿面 / 60x120x0.9cm
CG1201 自然面 / 120x120x0.9cm



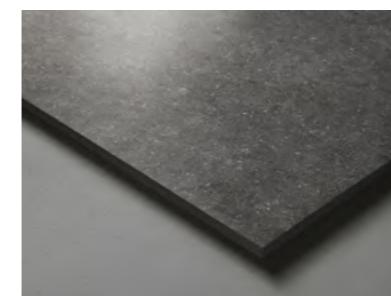
CG601202 自然面 / 60x120x0.9cm
CG601202-1 橫紋鑿面 / 60x120x0.9cm



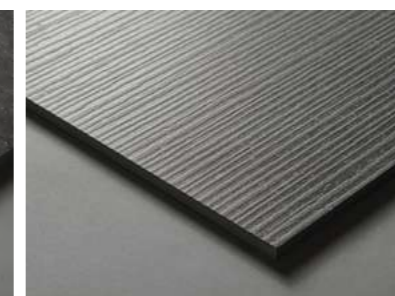
CG601203 自然面 / 60x120x0.9cm
CG601203-1 橫紋鑿面 / 60x120x0.9cm



CG601204 自然面 / 60x120x0.9cm
CG601204-1 橫紋鑿面 / 60x120x0.9cm



自然面



橫紋鑿面



CG601202

Argenta is made up of a young and dynamic team, up for lifelong learning, that researches the current market and satisfies its needs with technical and aesthetical solutions. Its support for a new generation of a high added value product, the result of research and use of the highest technology, has been implemented by a highly qualified technical team that counts with an own area of design and development, showing the support for human value as the base for success.

A J S
D L U

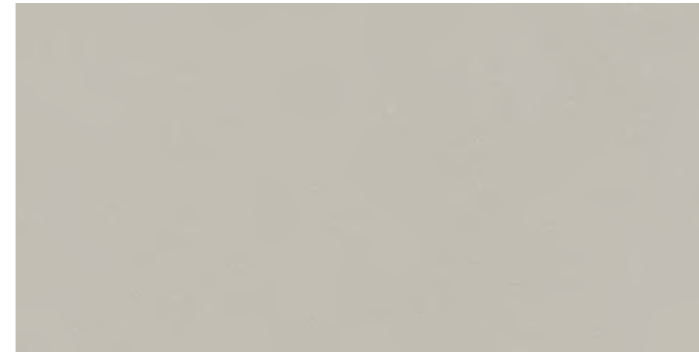


CI601211

CIFRE

Spain 西班牙

60x120x0.9cm / 吸水率 <0.5% / 色變 V2 / 12 版模面 / 霧面修邊石英磚



CI601201 / 60x120x0.9cm



CI601202 / 60x120x0.9cm



CI601211 / 60x120x0.9cm



CI601201

Argenta is made up of a young and dynamic team, up for lifelong learning, that researches the current market and satisfies its needs with technical and aesthetical solutions. Its support for a new generation of a high added value product, the result of research and use of the highest technology, has been implemented by a highly qualified technical team that counts with an own area of design and development, showing the support for human value as the base for success.





CAESAR

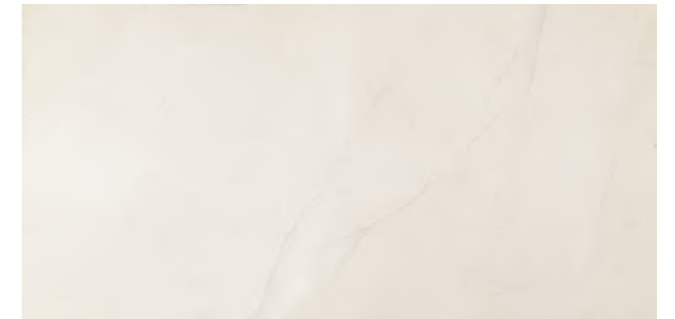
Italy 義大利

30x60x0.9cm / 60x120x0.9cm / 吸水率 <0.5% / PEI 4-5 / 止滑度 R9 / 色變 V2 / 霧面修邊透心石英磚



CS306020 / 30x60x0.9cm

60 版模面



CS601220 / 60x120x0.9cm

22 版模面



We choose only the best from nature: our granite, marble and limestone comes from quarries all over the world. We travel worldwide to hand select specific material and work closely with experienced inspectors in quarries and factories, ensuring the quality control is maintained at a consistently high level.

A J S
D L U



CS601231



CS601232

CAESAR

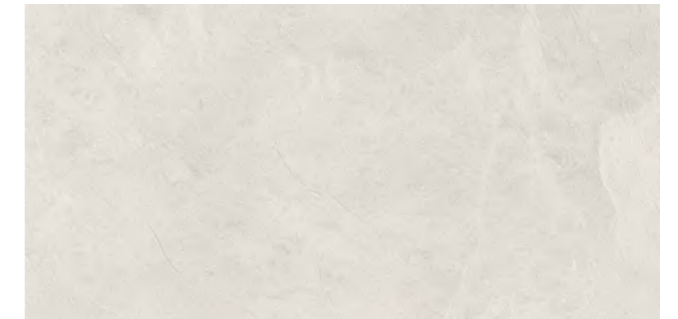
Italy 義大利

30x60x0.9cm / 60x120x0.9cm / 吸水率 <0.5% / 止滑度 R10B / 色變 V2 / 霧面修邊透心石英磚



CS306031 / 30x60x0.9cm

32 版模面



CS601231 / 60x120x0.9cm

8 版模面



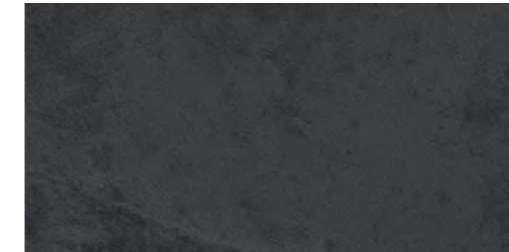
CS306032 / 30x60x0.9cm

32 版模面



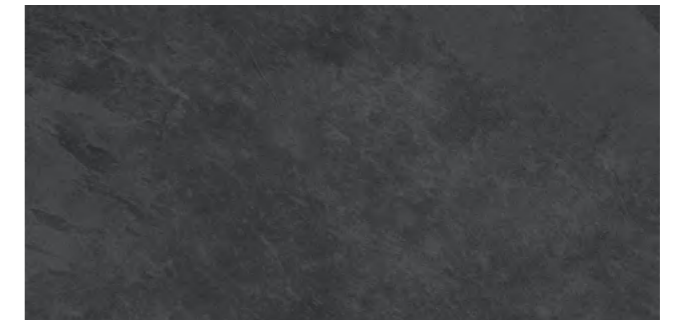
CS601232 / 60x120x0.9cm

8 版模面



CS306033 / 30x60x0.9cm

32 版模面



CS601233 / 60x120x0.9cm

8 版模面



We choose only the best from nature: our granite, marble and limestone comes from quarries all over the world. We travel worldwide to hand select specific material and work closely with experienced inspectors in quarries and factories, ensuring the quality control is maintained at a consistently high level.

A J S
D L U



ED601201

EDIMAX CERAMICHE

Italy 義大利

60x120x0.9cm / 吸水率 <0.5% / PEI 5 / 止滑度 R10A+B / 16 版模面 / 色變 V4 / 修邊石英磚 -3D TECH-



3D
SHAPED
TECHNOLOGY



ED601201 / 60x120x0.9cm



ED601202 / 60x120x0.9cm



ED601202

Argenta is made up of a young and dynamic team, up for lifelong learning, that researches the current market and satisfies its needs with technical and aesthetical solutions. Its support for a new generation of a high added value product, the result of research and use of the highest technology, has been implemented by a highly qualified technical team that counts with an own area of design and development, showing the support for human value as the base for success.

A J S
D L U



ED61213



ED61214

EDIMAX CERAMICHE

Italy 義大利

60x120x0.9cm / 吸水率 <0.5% / PEI 5 / 止滑度 R10A+B / 3D 霧面石英磚 - COLORBODY



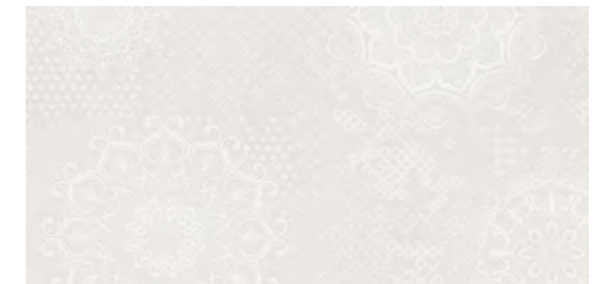
ED61211 / 60x120x0.9cm

16 版模面



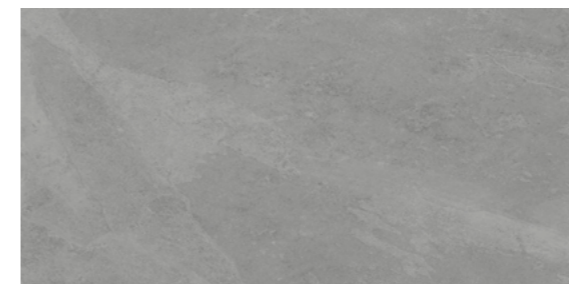
ED61211-1A / 60x120x0.9cm

8 版模面



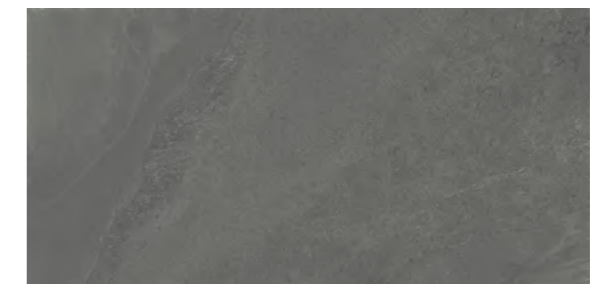
ED61211-1B / 60x120x0.9cm

12 版模面



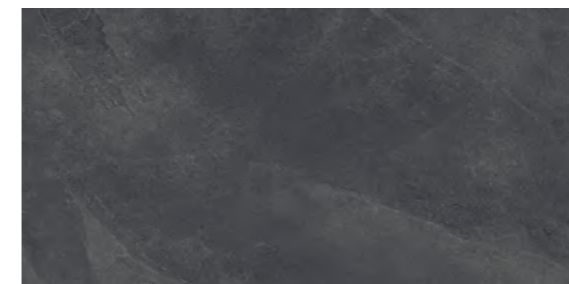
ED61212 / 60x120x0.9cm

16 版模面



ED61213 / 60x120x0.9cm

16 版模面



ED61214 / 60x120x0.9cm

16 版模面



ED61214-1A / 60x120x0.9cm

8 版模面

Argenta is made up of a young and dynamic team, up for lifelong learning, that researches the current market and satisfies its needs with technical and aesthetical solutions. Its support for a new generation of a high added value product, the result of research and use of the highest technology, has been implemented by a highly qualified technical team that counts with an own area of design and development, showing the support for human value as the base for success.





ET3601

EMOTION

Spain 西班牙

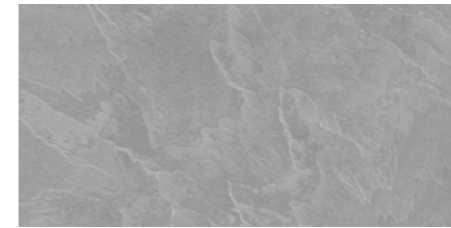
30x60x0.95cm / 吸水率 <0.5% / PEI 3~4 / 止滑度 R9 / 色變 V2 / 48 版模面 / 霧面修邊石英磚



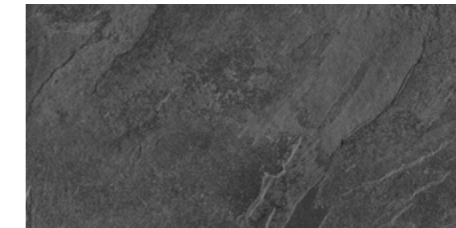
ET3601 / 30x60x0.95cm



ET3602 / 30x60x0.95cm



ET3603 / 30x60x0.95cm



ET3604 / 30x60x0.95cm



ET3604



Our company's complete devotion to service has driven us in our continual development of new product ranges fitting the specific décor requirements of each market. It is for this reason that CARMEN CERAMIC ART has become one of the world's leading firms, having the largest number of items in its catalogue, with around 3,000 product created especially to match the peculiarities and aesthetic and functional needs of each particular market.

A J S
D L U



FY30616

EURO CERAMIC FLYZONE

Italy 義大利

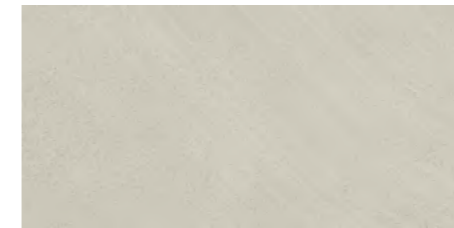
30x60x0.9cm / 60x120x0.9cm / 吸水率 <0.5% / 止滑度 R10 A+B / 色變 V2 / 24 版模面 / 霧面修邊石英磚



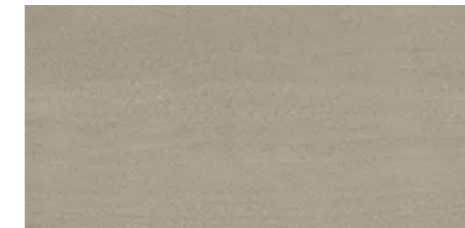
FY30616 / 30x60x0.95cm 24 版模面



FY30617 / 30x60x0.95cm 24 版模面



FY30618 / 30x60x0.95cm 24 版模面



FY30619 / 30x60x0.95cm 24 版模面



FY61216 / 60x120x0.9cm 6 版模面



FY61217 / 60x120x0.9cm 6 版模面



FY61217



Leonardo Ceramica, leader in the production of tiles, floor coverings, ceramics and porcelain and development of technical solutions and innovative design.

A J S
D L U



GU3602

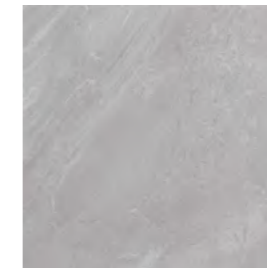
GUOCERA

Malaysia 馬來西亞

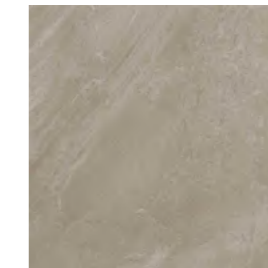
60x60x0.93cm 15 版模面 / 30x60x0.93cm 30 版模面 / 吸水率 <0.5% / 止滑度 R9 / 地壁磚



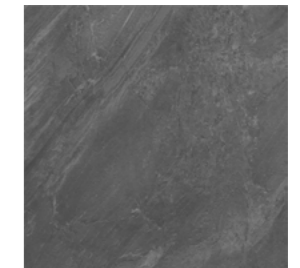
GU6601 / 60x60x0.93cm



GU6602 / 60x60x0.93cm



GU6603 / 60x60x0.93cm



GU6604 / 60x60x0.93cm



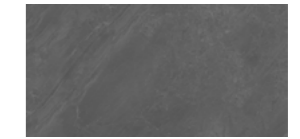
GU3601 / 30x60x0.93cm



GU3602 / 30x60x0.93cm



GU3603 / 30x60x0.93cm



GU3604 / 30x60x0.93cm



With nearly 50 years of manufacturing experience, Guocera is the tile brand of choice in over 50 countries from the America and Europe to the Middle East and Asia-Pacific. Guocera is one of Malaysia's largest manufacturers and exporter of tiles.

A J S
D L U



GU3633

GUOCERA

Malaysia 馬來西亞

30x60x0.88cm / 60x60x0.88cm / 吸水率 <0.5% / 止滑度 R9 / 色變 V3 / 30x60-8 版模面 / 60x60-4 版模面 / 修邊石英磚



市政廳系列



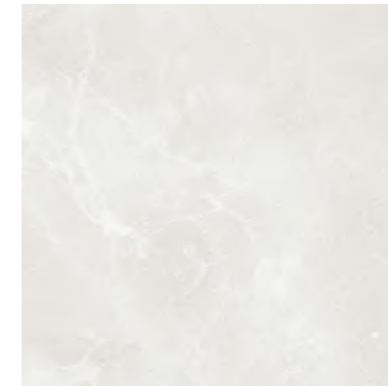
GU3631 / 30x60x0.88cm



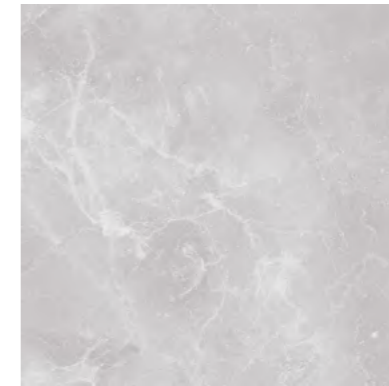
GU3632 / 30x60x0.88cm



GU3633 / 30x60x0.88cm



GU6631 / 60x60x0.88cm



GU6632 / 60x60x0.88cm



With nearly 50 years of manufacturing experience, Guocera is the tile brand of choice in over 50 countries from the America and Europe to the Middle East and Asia-Pacific. Guocera is one of Malaysia's largest manufacturers and exporter of tiles.

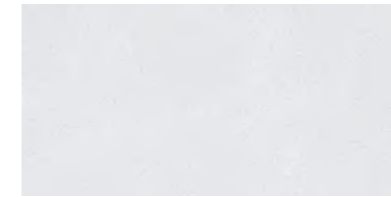
A J S
D L U



GUOCERA

Malaysia 馬來西亞

30x60x0.88cm / 吸水率 <0.5% / 16 版模面 / 修邊石英磚



GU3651 / 30x60x0.88cm



GU3652 / 30x60x0.88cm



GU3653 / 30x60x0.88cm



With nearly 50 years of manufacturing experience, Guocera is the tile brand of choice in over 50 countries from the America and Europe to the Middle East and Asia-Pacific. Guocera is one of Malaysia's largest manufacturers and exporter of tiles.



GU3656

GUOCERA

Malaysia 馬來西亞

30x60x0.88cm / 吸水率 <0.5% / 12 版模面 / 修邊石英磚



GU3656 / 30x60x0.88cm



With nearly 50 years of manufacturing experience, Guocera is the tile brand of choice in over 50 countries from the America and Europe to the Middle East and Asia-Pacific. Guocera is one of Malaysia's largest manufacturers and exporter of tiles.

A J S
D L U



GU3661 / GU3663 特

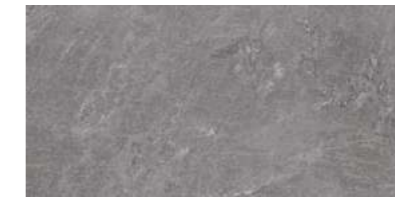
GUOCERA

Malaysia 馬來西亞

30x60x0.93cm / 60x60x0.93cm / 吸水率 <0.5% / MOHS 9 / 止滑度 R10 / 色變 V3 / 修邊石英磚



GU3661 / 30x60x0.93cm 24 版模面



GU3662 / 30x60x0.93cm 24 版模面



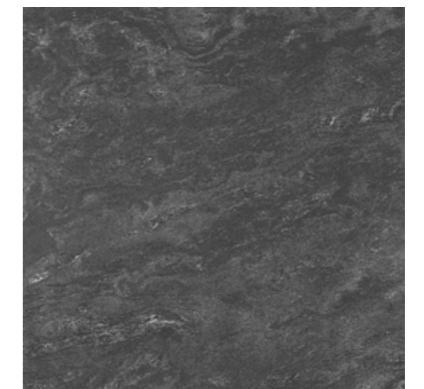
GU3663 特 / 30x60x0.93cm 24 版模面



GU6661 / 60x60x0.93cm 12 版模面



GU6662 / 60x60x0.93cm 12 版模面



GU6663 特 / 60x60x0.93cm 12 版模面



TECHNICAL 同色胚底修邊石英磚



With nearly 50 years of manufacturing experience, Guocera is the tile brand of choice in over 50 countries from the America and Europe to the Middle East and Asia-Pacific. Guocera is one of Malaysia's largest manufacturers and exporter of tiles.

A J S
D L U



GU3672

GUOCERA

Malaysia 馬來西亞

30x60x0.88cm / 吸水率 <0.5% / 止滑度 R9 / 8 版模面 / 修邊石英磚



GU3671 / 30x60x0.88cm



GU3672 / 30x60x0.88cm



GU3673 / 30x60x0.88cm



With nearly 50 years of manufacturing experience, Guocera is the tile brand of choice in over 50 countries from the America and Europe to the Middle East and Asia-Pacific. Guocera is one of Malaysia's largest manufacturers and exporter of tiles.

A J S
D L U



GU3678

GUOCERA

Malaysia 馬來西亞

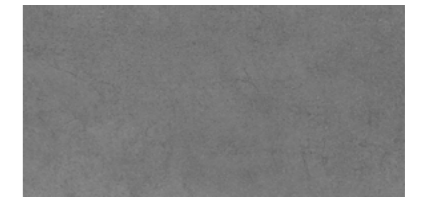
30x60x0.93cm / 吸水率 <0.5% / 止滑度 R9 / 8 版模面 / 修邊石英磚



GU3676 / 30x60x0.93cm



GU3677 / 30x60x0.93cm



GU3678 / 30x60x0.93cm



With nearly 50 years of manufacturing experience, Guocera is the tile brand of choice in over 50 countries from the America and Europe to the Middle East and Asia-Pacific. Guocera is one of Malaysia's largest manufacturers and exporter of tiles.

A J S
D L U



GU3686

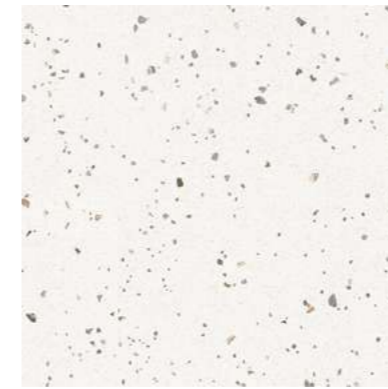
GUOCERA

Malaysia 馬來西亞

30x60x0.93cm / 60x60x0.93cm / 吸水率 <0.5% / 止滑度 R9 / 修邊石英磚



GU3686 / 30x60x0.93cm 8 版模面



GU6686 / 60x60x0.93cm 4 版模面



With nearly 50 years of manufacturing experience, Guocera is the tile brand of choice in over 50 countries from the America and Europe to the Middle East and Asia-Pacific. Guocera is one of Malaysia's largest manufacturers and exporter of tiles.

A J S
D L U

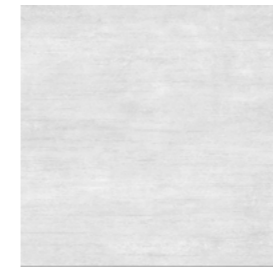


GU306081

GUOCERA

Malaysia 馬來西亞

60x60x0.93cm 6 版模面 / 30x60x0.93cm 12 版模面 / 吸水率 < 0.5% / 地壁磚



GU6081 / 60x60x0.93cm



GU6082 / 60x60x0.93cm



GU6083 / 60x60x0.93cm



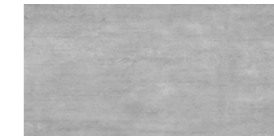
GU6084 / 60x60x0.93cm



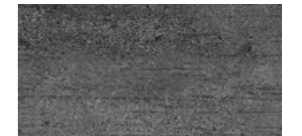
GU306081 / 30x60x0.93cm



GU306082 / 30x60x0.93cm



GU306083 / 30x60x0.93cm



GU306084 / 30x60x0.93cm



With nearly 50 years of manufacturing experience, Guocera is the tile brand of choice in over 50 countries from the America and Europe to the Middle East and Asia-Pacific. Guocera is one of Malaysia's largest manufacturers and exporter of tiles.

A J S
D L U

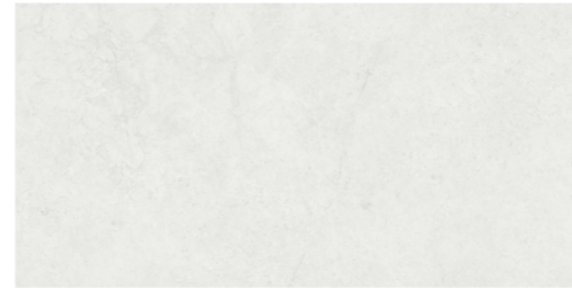


GU601217

GUOCERA

Malaysia 馬來西亞

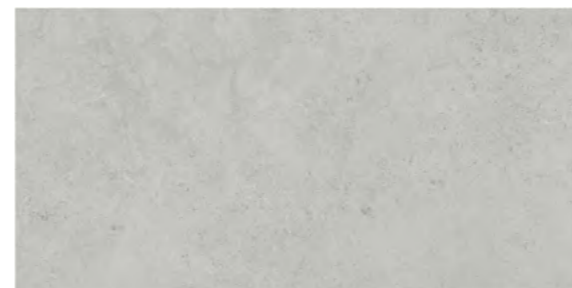
60x120x1cm / 吸水率 <0.5% / 止滑度 R10 / 色變 V3 / 6 版模面 / 遇濕止滑面 / 修邊石英磚



GU601216 / 60x120x1cm



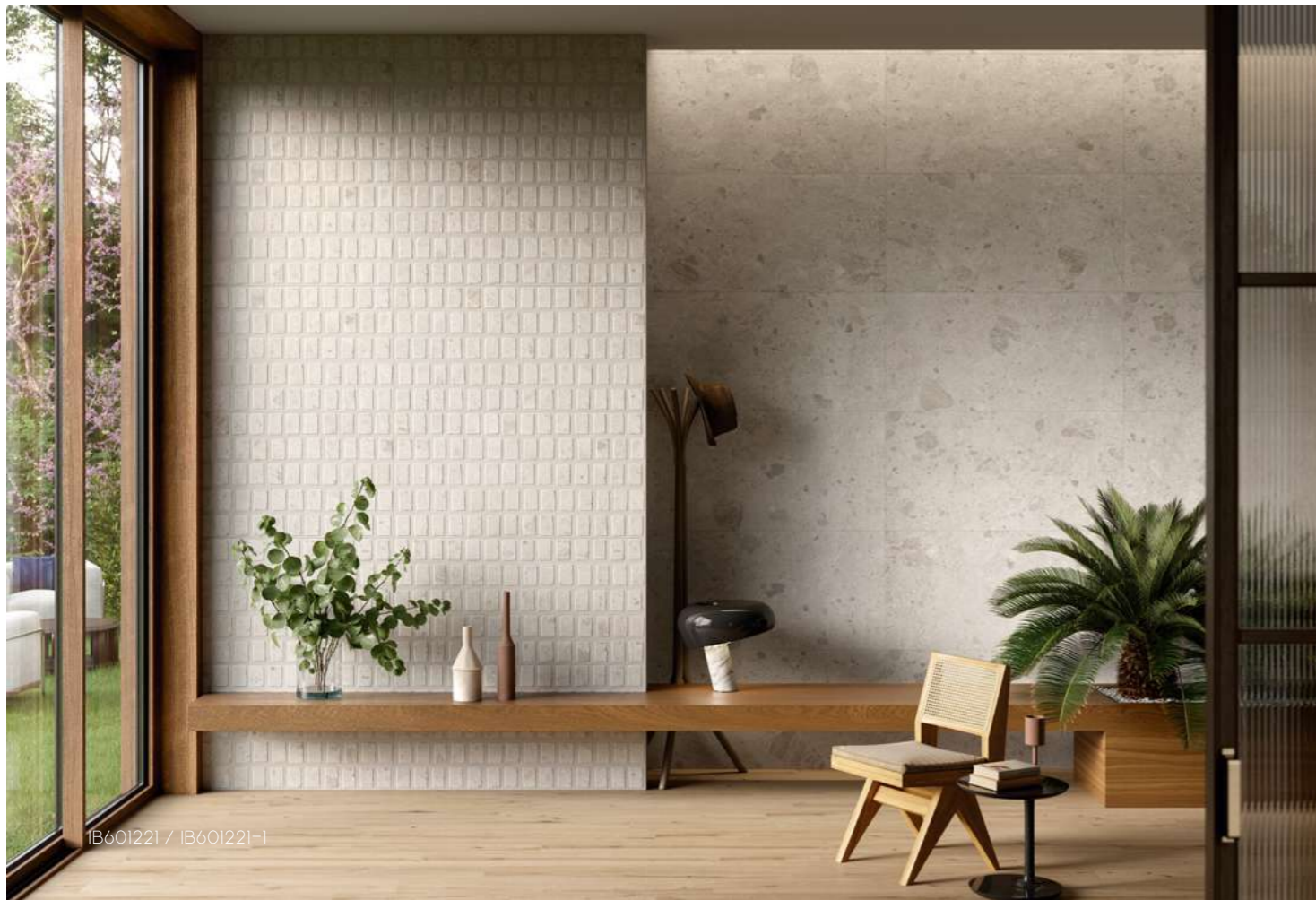
GU601217 / 60x120x1cm



GU601218 / 60x120x1cm



With nearly 50 years of manufacturing experience, Guocera is the tile brand of choice in over 50 countries from the America and Europe to the Middle East and Asia-Pacific. Guocera is one of Malaysia's largest manufacturers and exporter of tiles.



IB601221 / IB601221-1



B601221-1

IBERO

Spain 西班牙

60x120x1cm / 吸水率 <0.5% / 止滑度 R9 / 色變 V4 / 3D 柔拋霧面 COLORBODY 修邊石英磚



IB601221 / 60x120x1cm

10 版模面



IB601221-1 / 60x120x1cm

3 版模面



We contribute to create a pleasant space to provide comfort as well as meeting our expectations about maintenance, efficiency and preservation.
Contribuimos a la creación de un espacio agradable, que aporte confort y cumpla con nuestras expectativas en cuanto a mantenimiento, rendimiento y conservación.

A J S
D L U



IN601236

ICON

India 印度

60x120x0.9cm / 吸水率 <0.5% / 4 版模面 / 糖砂面修邊石英磚



IN601231 / 60x120x0.9cm



IN601232 / 60x120x0.9cm



IN601236 / 60x120x0.9cm



IN601232



We choose only the best from nature: our granite, marble and limestone comes from quarries all over the world. We travel worldwide to hand select specific material and work closely with experienced inspectors in quarries and factories, ensuring the quality control is maintained at a consistently high level.

A J S
D L U



KB61233

KERABEN

Spain 西班牙

60x120x1cm / 吸水率 <0.5% / 色變值 V4 / 12 版模面 / COLORBODY 3D 柔拋面修邊石英磚



KB61231 / 60x120x1cm



KB61232 / 60x120x1cm



KB61233 / 60x120x1cm



KB61232



Keraben commenced its business activity in 1974 under the name Gres de Nules. Since then, customer service and ongoing technological innovation have formed the basis of our strategy. We design and develop our products from the drawing board to production, thereby guaranteeing unique textures and patterns for each piece.





NB61202 / NB61202-1



NB61201 / NB61201-1

NOVABELL

Italy 義大利

60x120x0.9cm / 吸水率 <0.06% / MOHS 6 / 色變 V3 / 12 版模面 / 修邊石英磚



NB61201 / 60x120x0.9cm

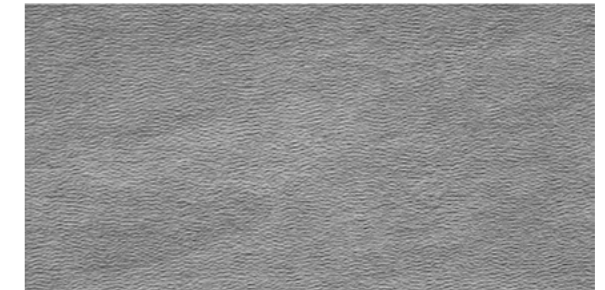


NB61201-1 / 60x120x0.9cm

期貨

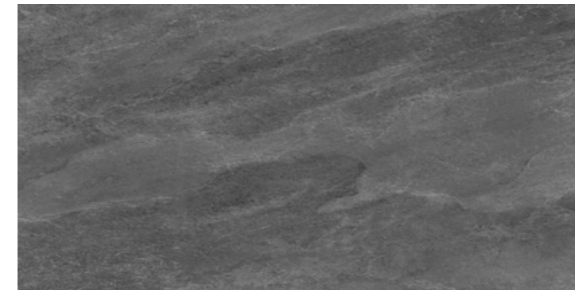


NB61202 / 60x120x0.9cm

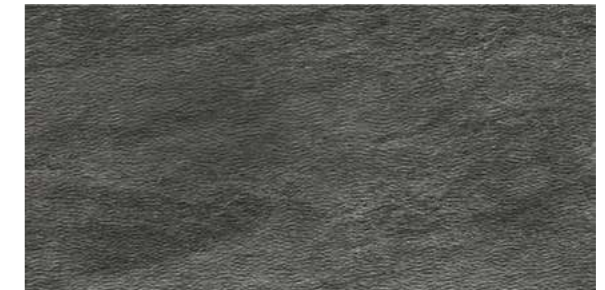


NB61202-1 / 60x120x0.9cm

期貨



NB61203 / 60x120x0.9cm



NB61203-1 / 60x120x0.9cm

期貨



NovaBell is now a solid, dynamic company that stands out for its lightning response to changing trends and technologies. The company's strength lies in its management's aptitude for teamwork, running operations in a way that combines the managerial principles of efficiency with looking after the Company's employees and the environment.

A J S
D L U

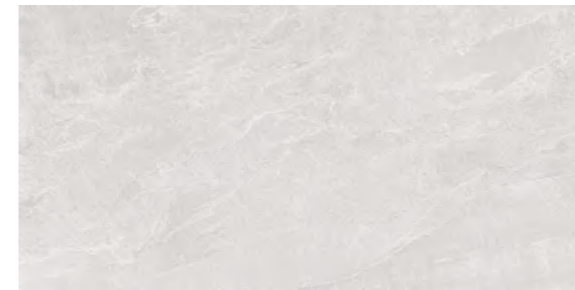


NB61206 / NB61206-1

NOVABELL

Italy 義大利

60x120x0.9cm / 吸水率 <0.06% / 止滑度 R10 / 色變 V3 / 6 版模面 / 3D 消光霧面修邊石英磚



NB61206 / 60x120x0.9cm



NB61206-1 / 60x120x0.9cm



NB61207 / 60x120x0.9cm



NB61208 / 60x120x0.9cm



NovaBell is now a solid, dynamic company that stands out for its lightning response to changing trends and technologies. The company's strength lies in its management's aptitude for teamwork, running operations in a way that combines the managerial principles of efficiency with looking after the Company's employees and the environment.

A J S
D L U



NB61251

NOVABELL

Italy 義大利

60x120x0.9cm / 吸水率 <0.5% / 止滑度 R10 / 6 版模面 / 修邊石英磚



NB61251 / 60x120x0.9cm



NB61252 / 60x120x0.9cm



NB61253 / 60x120x0.9cm



NB61252



NovaBell is now a solid, dynamic company that stands out for its lightning response to changing trends and technologies. The company's strength lies in its management's aptitude for teamwork, running operations in a way that combines the managerial principles of efficiency with looking after the Company's employees and the environment.

A J S
D L U



NB61256

NOVABELL

Italy 義大利

60x120x0.9cm / 吸水率 <0.5% / 止滑度 RIO A+B / 色變 V2 / 4 版模面 / 修邊石英磚



NB61256 / 60x120x0.9cm



NB61257 / 60x120x0.9cm



NB61257



NovaBell is now a solid, dynamic company that stands out for its lightning response to changing trends and technologies. The company's strength lies in its management's aptitude for teamwork, running operations in a way that combines the managerial principles of efficiency with looking after the Company's employees and the environment.

A J S
D L U



NB61261 / NB61261-1

NOVABELL

Italy 義大利

60x120x0.9cm / 吸水率 <0.5% / 止滑度 R10 / 色變 V3 / 12 版模面 / 修邊石英磚



NB61261 / 60x120x0.9cm



NB61261-1 / 60x120x0.9cm



NovaBell is now a solid, dynamic company that stands out for its lightning response to changing trends and technologies. The company's strength lies in its management's aptitude for teamwork, running operations in a way that combines the managerial principles of efficiency with looking after the Company's employees and the environment.

A J S
D L U

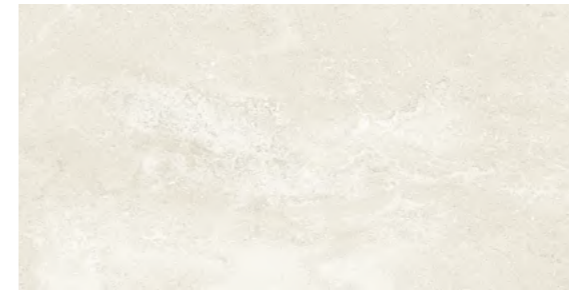


NB61272

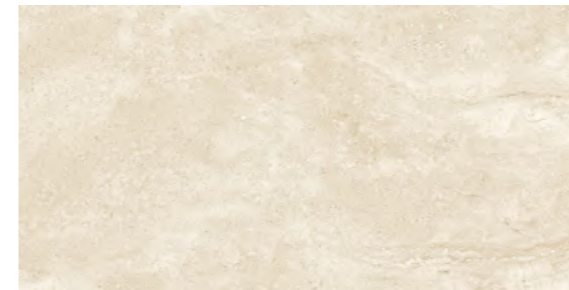
NOVABELL

Italy 義大利

60x120x0.9cm / 吸水率 <0.5% / 止滑度 R10 / 12 版模面 / 3D 數位修邊石英磚



NB61271 / 60x120x0.9cm



NB61272 / 60x120x0.9cm



NB61273 / 60x120x0.9cm



NB61273



NovaBell is now a solid, dynamic company that stands out for its lightning response to changing trends and technologies. The company's strength lies in its management's aptitude for teamwork, running operations in a way that combines the managerial principles of efficiency with looking after the Company's employees and the environment.

A J S
D L U



NR601221

NAVARTI

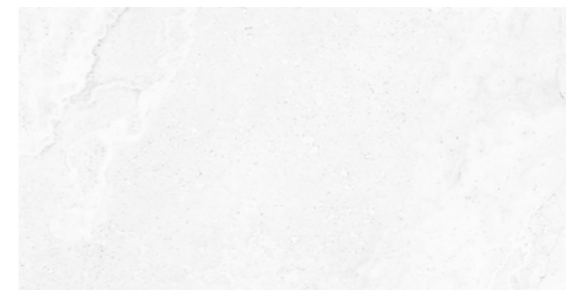
Spain 西班牙

120x120x1.02cm / 60x120x1.02cm / 吸水率 <0.5% / 色變 V2 / 7-14 版模面 / 3D 柔拋面修邊石英磚



NR1221 / 120x120x1.02cm

7 版模面



NR601221 / 60x120x1.02cm

14 版模面



NovaBell is now a solid, dynamic company that stands out for its lightning response to changing trends and technologies. The company's strength lies in its management's aptitude for teamwork, running operations in a way that combines the managerial principles of efficiency with looking after the Company's employees and the environment.

A J S
D L U



RO401202 / RO401202-1



RO401203 / RO401203-1

ROCERSA

Spain 西班牙

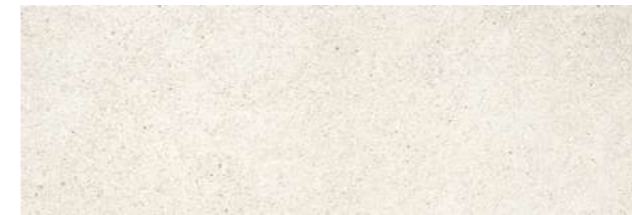
40x120x0.7cm / 吸水率 <0.5% / MOHS 5 / 謬思系列 / 12 版模面 / 薄板石英磚



RO401201 / 40x120x0.7cm



RO401201-1 / 40x120x0.7cm



RO401202 / 40x120x0.7cm



RO401202-1 / 40x120x0.7cm



RO401203 / 40x120x0.7cm



RO401203-1 / 40x120x0.7cm



El Molino has been evolving incessantly since its founding in 1922, which has turned the company, created by Cipriano Castelló, into a clear and solid landmark for the ceramics industry worldwide. After nine decades of self-improvement, and thanks to the work of three generations of entrepreneurs, El Molino is today, as yesterday, a pioneering business in the promotion of ceramics as the best solution for the covering of floors and walls of all kinds of spaces.

A J S
D L U



RO401226 / RO401226-1

ROCERSA

Spain 西班牙

40x120x0.7cm / 吸水率 <0.5% / 止滑度 R9 / 色變 V2 / 15 版模面 / 霧面修邊石英磚



RO401226 / 40x120x0.7cm



RO401226-1 / 40x120x0.7cm



RO401227 / 40x120x0.7cm



RO401227-1 / 40x120x0.7cm



RO401227 / RO401227-1



El Molino has been evolving incessantly since its founding in 1922, which has turned the company, created by Cipriano Castelló, into a clear and solid landmark for the ceramics industry worldwide. After nine decades of self-improvement, and thanks to the work of three generations of entrepreneurs, El Molino is today, as yesterday, a pioneering business in the promotion of ceramics as the best solution for the covering of floors and walls of all kinds of spaces.

A J S
D L U



RO401231 / RO401231-1

ROCERSA

Spain 西班牙

40x120x0.7cm / 吸水率 <0.5% / 色變 V3 / 24 版模面 / 霧面修邊石英磚



RO401231 / 40x120x0.7cm



RO401231-1 / 40x120x0.7cm



RO401231 / RO401231-1



El Molino has been evolving incessantly since its founding in 1922, which has turned the company, created by Cipriano Castelló, into a clear and solid landmark for the ceramics industry worldwide. After nine decades of self-improvement, and thanks to the work of three generations of entrepreneurs, El Molino is today, as yesterday, a pioneering business in the promotion of ceramics as the best solution for the covering of floors and walls of all kinds of spaces.

A J S
D L U



RO401236 / RO401236-1

ROCERSA

Spain 西班牙

40x120x0.7cm / 吸水率 <0.5% / 色變 V2 / 14 版模面 / 霧面修邊石英磚



RO401236 / 40x120x0.7cm



RO401236-1 / 40x120x0.7cm



El Molino has been evolving incessantly since its founding in 1922, which has turned the company, created by Cipriano Castelló, into a clear and solid landmark for the ceramics industry worldwide. After nine decades of self-improvement, and thanks to the work of three generations of entrepreneurs, El Molino is today, as yesterday, a pioneering business in the promotion of ceramics as the best solution for the covering of floors and walls of all kinds of spaces.

A J S
D L U



VI601202

VITACER

Spain 西班牙

60x120x1cm / 吸水率 <0.5% / PEI 4 / 止滑度 R9 / 20 版模面 / 修邊石英磚



VI601201 / 60x120x1cm



VI601202 / 60x120x1cm



VI601203 / 60x120x1cm



VI601201 / VI601203



El Molino has been evolving incessantly since its founding in 1922, which has turned the company, created by Cipriano Castelló, into a clear and solid landmark for the ceramics industry worldwide. After nine decades of self-improvement, and thanks to the work of three generations of entrepreneurs, El Molino is today, as yesterday, a pioneering business in the promotion of ceramics as the best solution for the covering of floors and walls of all kinds of spaces.

A J S
D L U



V1601207

VITACER

Spain 西班牙

60x120x1cm / 吸水率 <0.5% / 止滑度 R9 / 修邊石英磚



V1601206 / 60x120x1cm



V1601207 / 60x120x1cm



V1601208 / 60x120x1cm



El Molino has been evolving incessantly since its founding in 1922, which has turned the company, created by Cipriano Castelló, into a clear and solid landmark for the ceramics industry worldwide. After nine decades of self-improvement, and thanks to the work of three generations of entrepreneurs, El Molino is today, as yesterday, a pioneering business in the promotion of ceramics as the best solution for the covering of floors and walls of all kinds of spaces.

A J S
D L U



VI601212



VI601212

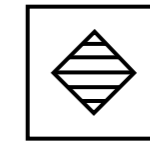
VITACER

Spain 西班牙

60x120x1cm / 吸水率 <0.5% / PEI 4 / 止滑度 R10 / 20 版模面 / 修邊石英磚



VI601211 / 60x120x1cm



SMOOTH & GRIP

* 此系列運用最新的磁磚技術，使其表面有適合室內的柔霧觸感並同時達到 R10 的止滑效果



VI601212 / 60x120x1cm



El Molino has been evolving incessantly since its founding in 1922, which has turned the company, created by Cipriano Castelló, into a clear and solid landmark for the ceramics industry worldwide. After nine decades of self-improvement, and thanks to the work of three generations of entrepreneurs, El Molino is today, as yesterday, a pioneering business in the promotion of ceramics as the best solution for the covering of floors and walls of all kinds of spaces.

A J S
D L U



VI601221

VITACER

Spain 西班牙

60x120x1cm / 吸水率 <0.5% / PEI 4 / 20 版模面 / SATIN 柔霧面修邊石英磚



VI601221 / 60x120x1cm

珊瑚石



VI601231 / 60x120x1cm

大理石藝術



VI601231



El Molino has been evolving incessantly since its founding in 1922, which has turned the company, created by Cipriano Castelló, into a clear and solid landmark for the ceramics industry worldwide. After nine decades of self-improvement, and thanks to the work of three generations of entrepreneurs, El Molino is today, as yesterday, a pioneering business in the promotion of ceramics as the best solution for the covering of floors and walls of all kinds of spaces.

A J S
D L U



VI601246

VITACER

Spain 西班牙

60x120x1cm / 吸水率 <0.5% / 止滑度 R9 / 色變 V2 / 7 版模面 / 霧面修邊石英磚



VI601246 / 60x120x1cm



VI601247 / 60x120x1cm



VI601247



El Molino has been evolving incessantly since its founding in 1922, which has turned the company, created by Cipriano Castelló, into a clear and solid landmark for the ceramics industry worldwide. After nine decades of self-improvement, and thanks to the work of three generations of entrepreneurs, El Molino is today, as yesterday, a pioneering business in the promotion of ceramics as the best solution for the covering of floors and walls of all kinds of spaces.

A J S
D L U



V1601255

VITACER

Spain 西班牙

60x120x1cm / 吸水率 <0.5% / 止滑度 R10 / 3D 立體霧面修邊石英磚



V1601255 / 60x120x1cm



El Molino has been evolving incessantly since its founding in 1922, which has turned the company, created by Cipriano Castelló, into a clear and solid landmark for the ceramics industry worldwide. After nine decades of self-improvement, and thanks to the work of three generations of entrepreneurs, El Molino is today, as yesterday, a pioneering business in the promotion of ceramics as the best solution for the covering of floors and walls of all kinds of spaces.

A J S
D L U

CEMENT & LIMEPAINT

Tranquility and elegant



GU601211 / GU601212

GUOCERA

Malaysia 馬來西亞

60x120x1cm / 吸水率 <0.5% / 色變值 V3 / 12 版模面 / 修邊石英磚



GU601211 / 60x120x1cm



GU601212 / 60x120x1cm



With nearly 50 years of manufacturing experience, Guocera is the tile brand of choice in over 50 countries from the America and Europe to the Middle East and Asia-Pacific. Guocera is one of Malaysia's largest manufacturers and exporter of tiles.

A J S
D L U

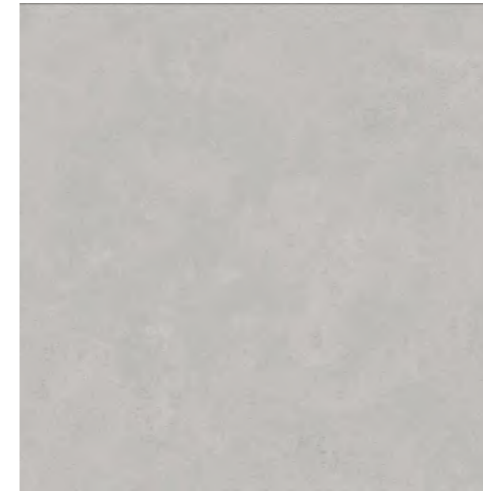


LY8881

LYCOS

India 印度

80x80x0.85cm / 吸水率 0.5% / MOHS 5 / 4 版模面 / 修邊石英磚



LY8882 / 80x80x0.85cm

霧面



Keraben commenced its business activity in 1974 under the name Gres de Nules. Since then, customer service and ongoing technological innovation have formed the basis of our strategy. We design and develop our products from the drawing board to production, thereby guaranteeing unique textures and patterns for each piece.

A J S
D L U



NB61217 / NB61218

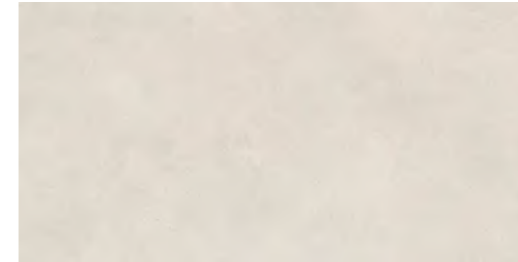


NB61216 / NB61218-1

NOVABELL

Italy 義大利

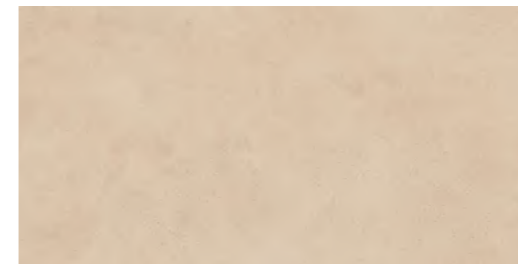
60x120x0.9cm / 吸水率 <0.06% / 色變 V2 / 6 版模面 / 霧面修邊石英磚



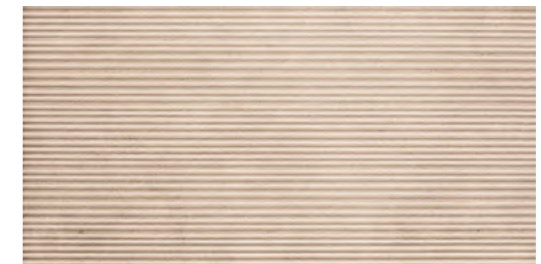
NB61216 / 60x120x0.9cm



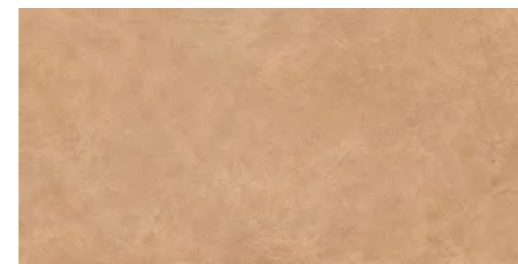
NB61216-1 / 60x120x0.9cm



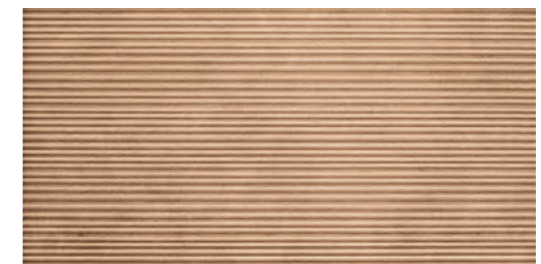
NB61217 / 60x120x0.9cm



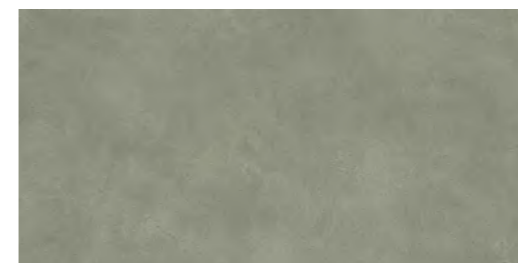
NB61217-1 / 60x120x0.9cm



NB61218 / 60x120x0.9cm



NB61218-1 / 60x120x0.9cm



NB61219 / 60x120x0.9cm



NB61219-1 / 60x120x0.9cm



NovaBell is now a solid, dynamic company that stands out for its lightning response to changing trends and technologies. The company's strength lies in its management's aptitude for teamwork, running operations in a way that combines the managerial principles of efficiency with looking after the Company's employees and the environment.

A J S
D L U



NB61247

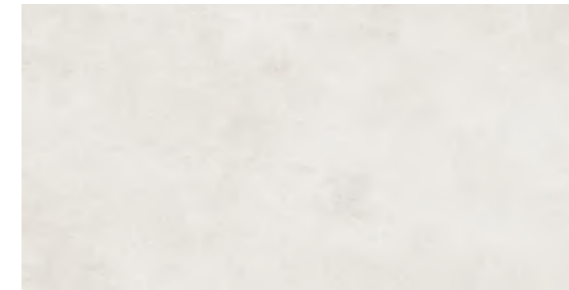


NB61246

NOVABELL

Italy 義大利

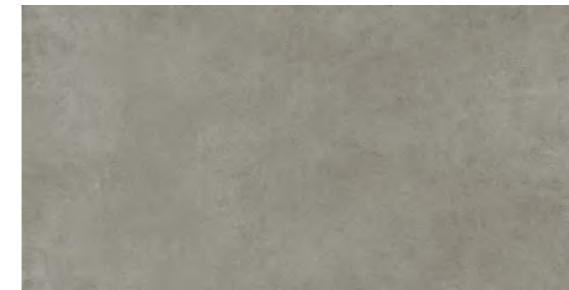
60x120x0.9cm / 吸水率 <0.5% / 止滑度 RIO A+B / 色變 V2 / 12 版模面 / 霧面修邊石英磚



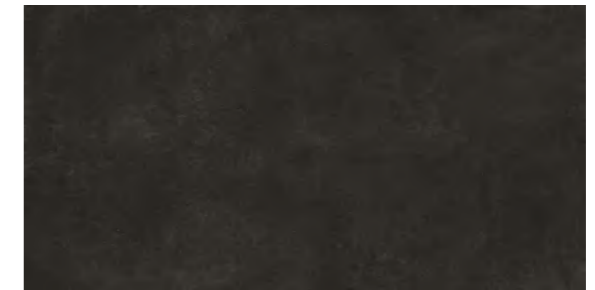
NB61245 / 60x120x0.9cm



NB61246 / 60x120x0.9cm



NB61247 / 60x120x0.9cm



NB61248 / 60x120x0.9cm



NovaBell is now a solid, dynamic company that stands out for its lightning response to changing trends and technologies. The company's strength lies in its management's aptitude for teamwork, running operations in a way that combines the managerial principles of efficiency with looking after the Company's employees and the environment.

A J S
D L U



NB61267

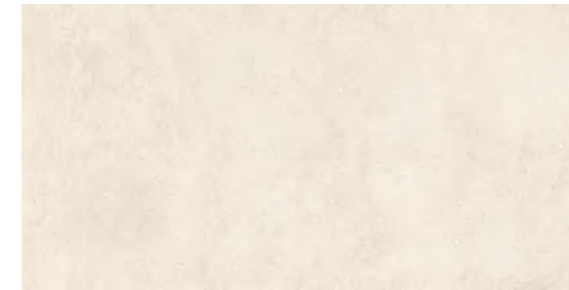


NB61266 / NB61269

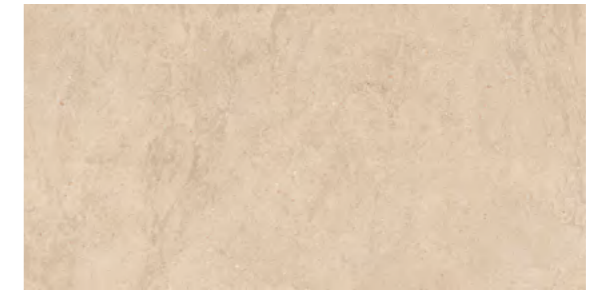
NOVABELL

Italy 義大利

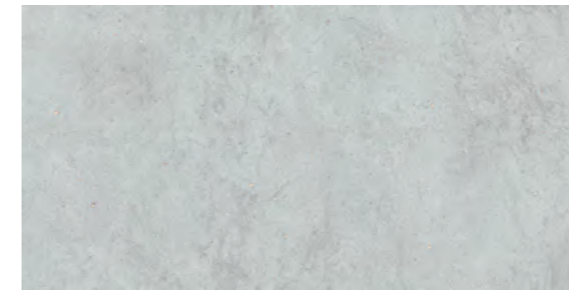
60x120x0.9cm / 吸水率 <0.5% / 止滑度 RIO A+B / 色變 V3 / 12 版模面 / 霧面修邊石英磚



NB61265 / 60x120x0.9cm



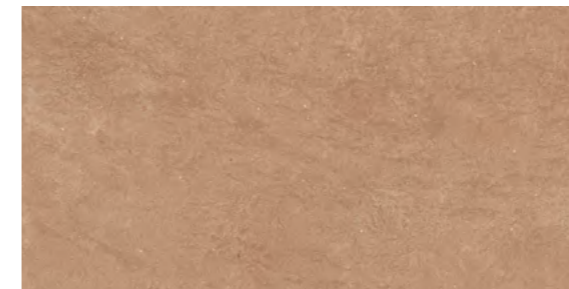
NB61266 / 60x120x0.9cm



NB61267 / 60x120x0.9cm



NB61268 / 60x120x0.9cm



NB61269 / 60x120x0.9cm



NovaBell is now a solid, dynamic company that stands out for its lightning response to changing trends and technologies. The company's strength lies in its management's aptitude for teamwork, running operations in a way that combines the managerial principles of efficiency with looking after the Company's employees and the environment.

A J S
D L U



RO401241 / RO401241-1

ROCERSA

Spain 西班牙

40x120x0.7cm / 吸水率 <0.5% / 色變 V2 / 15 版模面 / 霧面修邊石英磚



RO401241 / 40x120x0.7cm



RO401241-1 / 40x120x0.7cm



El Molino has been evolving incessantly since its founding in 1922, which has turned the company, created by Cipriano Castelló, into a clear and solid landmark for the ceramics industry worldwide. After nine decades of self-improvement, and thanks to the work of three generations of entrepreneurs, El Molino is today, as yesterday, a pioneering business in the promotion of ceramics as the best solution for the covering of floors and walls of all kinds of spaces.

A J S
D L U



V11101

VITACER

Spain 西班牙

100x100x1cm / 吸水率 <0.5% / 止滑度 R9 / 8 版模面 / 修邊石英磚



V11101 / 100x100x1cm



V11102 / 100x100x1cm



V11102



El Molino has been evolving incessantly since its founding in 1922, which has turned the company, created by Cipriano Castelló, into a clear and solid landmark for the ceramics industry worldwide. After nine decades of self-improvement, and thanks to the work of three generations of entrepreneurs, El Molino is today, as yesterday, a pioneering business in the promotion of ceramics as the best solution for the covering of floors and walls of all kinds of spaces.

A J S
D L U

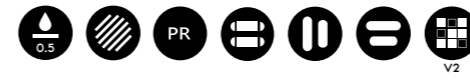


V11108 / V11109

VITACER

Spain 西班牙

100x100x1cm / 吸水率 <0.5% / 色變值 V2 / 7 版模面 / SATIN 柔霧面修邊石英磚



V11108 / 100x100x1cm



V11109 / 100x100x1cm



El Molino has been evolving incessantly since its founding in 1922, which has turned the company, created by Cipriano Castelló, into a clear and solid landmark for the ceramics industry worldwide. After nine decades of self-improvement, and thanks to the work of three generations of entrepreneurs, El Molino is today, as yesterday, a pioneering business in the promotion of ceramics as the best solution for the covering of floors and walls of all kinds of spaces.

A J S
D L U

MARBLE

Tranquility and elegant



AE601261

APE

Spain 西班牙

60x120cm / 吸水率 <0.5% / 色變 V2 / 12 版模面 / 全釉拋修邊石英磚



AE601261 / 60X120x0.97cm



AE601262 / 59X119x1.04cm



AE601262



Azulejos Alcor, Making us known. Our installations image has been absolutely modernized. Azulejos Alcor, has based its business development on the use of the highest industrial technology as well as on the constant research of new designs. Along with the human capital, we have, as a result, a range of high quality products designed to satisfy our clients' tastes and needs.

A J S
D L U



BT61241

BESTILE

Spain 西班牙

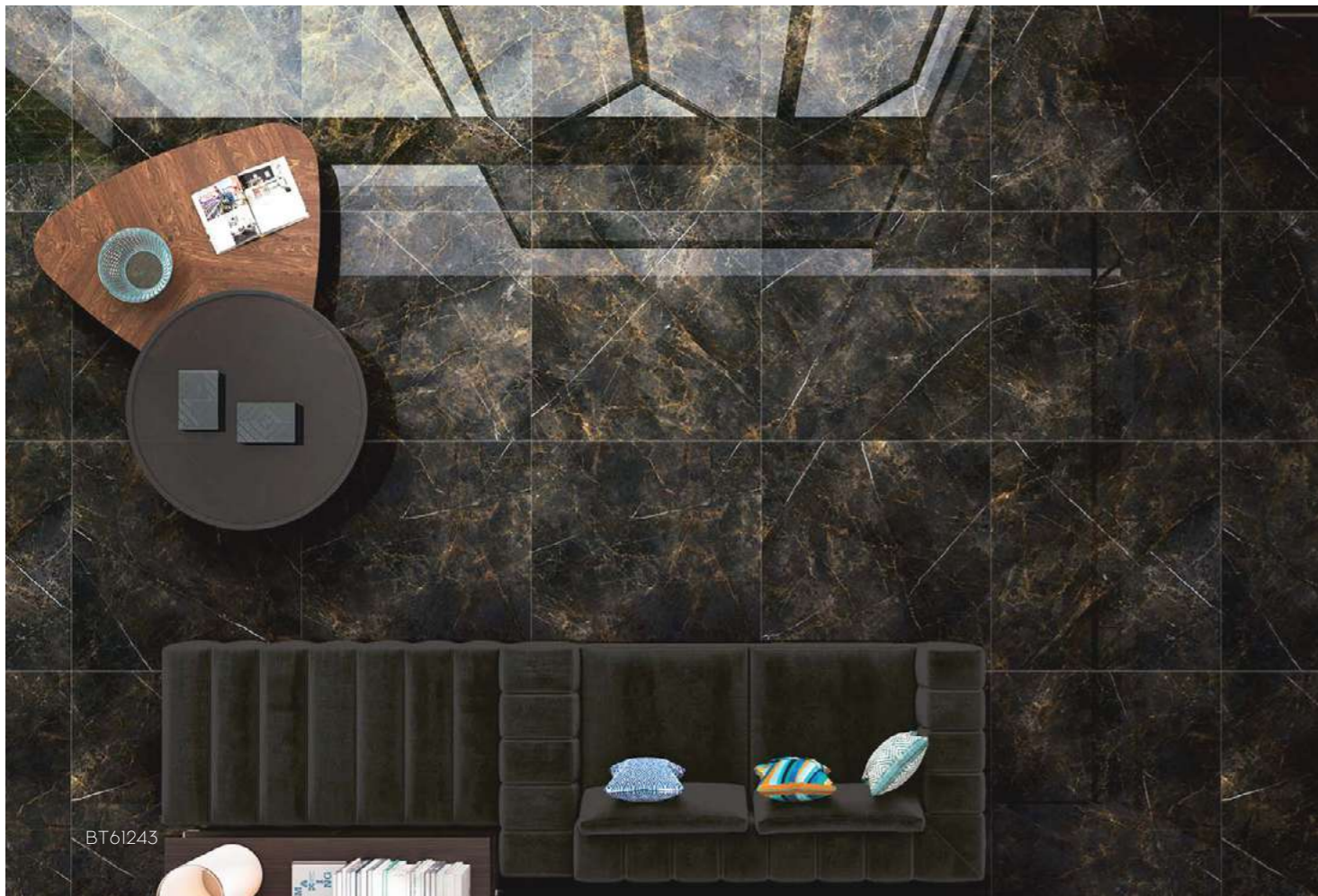
60x120x1.05cm / 吸水率 >0.5% / MOHS 5 / 色變 V2 / 10 版模面 / 全釉拋修邊石英磚



BT61241 / 60x120x1.05cm



BT61243 / 60x120x1.05cm



BT61243



We contribute to create a pleasant space to provide comfort as well as meeting our expectations about maintenance, efficiency and preservation.
Contribuimos a la creación de un espacio agradable, que aporte confort y cumpla con nuestras expectativas en cuanto a mantenimiento, rendimiento y conservación.

A J S
D L U



GU601201

GUOCERA

Malaysia 馬來西亞

60x120x1cm / 吸水率 <0.5% / 4 版模面 / 全釉拋修邊石英磚



GU601201 / 60x120x1cm



With nearly 50 years of manufacturing experience, Guocera is the tile brand of choice in over 50 countries from the America and Europe to the Middle East and Asia-Pacific. Guocera is one of Malaysia's largest manufacturers and exporter of tiles.

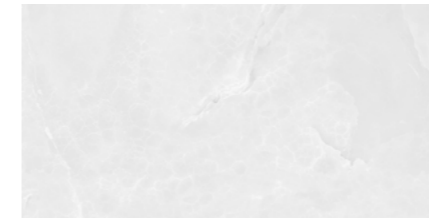


IN306012

ICON

India 印度

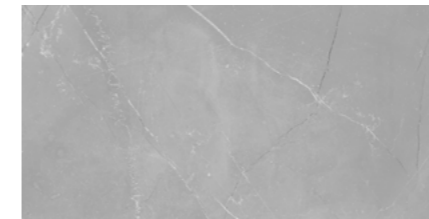
30x60x0.825cm / 吸水率 <0.5% / PEI 3 / 20~24 版模面 / 全釉拋修邊石英磚



IN306011 / 30x60x0.825cm



IN306012 / 30x60x0.825cm



IN306017 / 30x60x0.825cm



IN306018 / 30x60x0.825cm



IN306011



We choose only the best from nature: our granite, marble and limestone comes from quarries all over the world. We travel worldwide to hand select specific material and work closely with experienced inspectors in quarries and factories, ensuring the quality control is maintained at a consistently high level.

A J S
D L U

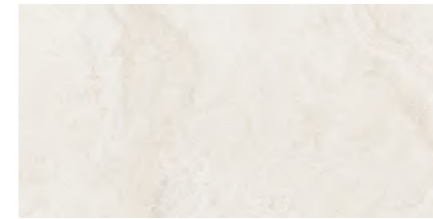


IN306027

ICON

India 印度

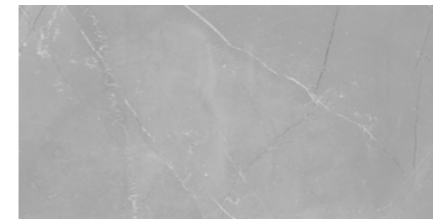
30x60x0.825cm / 吸水率 <0.5% / PEI 3 / 20~24 版模面 / 霧面修邊石英磚



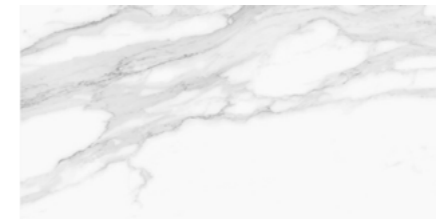
IN306022 / 30x60x0.825cm



IN306023 / 30x60x0.825cm



IN306027 / 30x60x0.825cm



IN306028 / 30x60x0.825cm



We choose only the best from nature: our granite, marble and limestone comes from quarries all over the world. We travel worldwide to hand select specific material and work closely with experienced inspectors in quarries and factories, ensuring the quality control is maintained at a consistently high level.

A J S
D L U

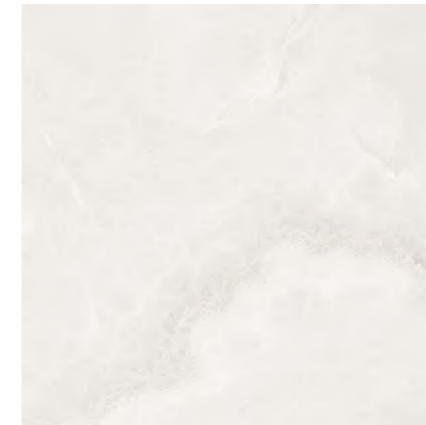


IN6013

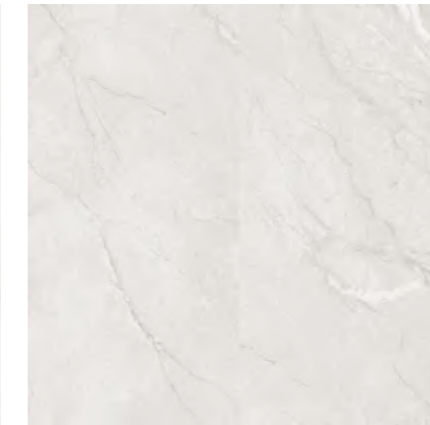
ICON

India 印度

60x60x0.825cm / 吸水率 <0.5% / PEI 3 / 12 版模面 / 全釉拋修邊石英磚



IN6011 / 60x60x0.825cm

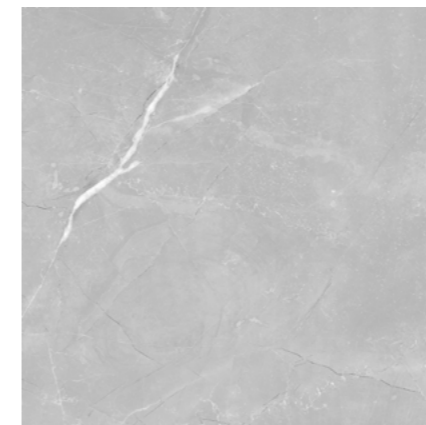


IN6013 / 60x60x0.825cm



IN6015 / 60x60x0.825cm

8 板模面



IN6017 / 60x60x0.825cm



IN6018 / 60x60x0.825cm



We choose only the best from nature: our granite, marble and limestone comes from quarries all over the world. We travel worldwide to hand select specific material and work closely with experienced inspectors in quarries and factories, ensuring the quality control is maintained at a consistently high level.

A J S
D L U



IN8012

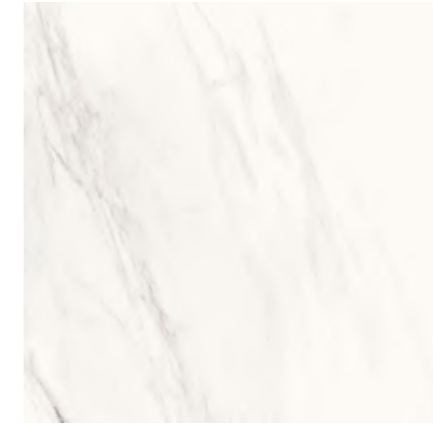
ICON

India 印度

80x80x0.9cm / 吸水率 <0.5% / PEI 3 / 8-12 版模面 / 全釉拋修邊石英磚



IN8011 / 80x80x0.9cm



IN8012 / 80x80x0.9cm



IN8015 / 80x80x0.9cm

8 板模面



We choose only the best from nature: our granite, marble and limestone comes from quarries all over the world. We travel worldwide to hand select specific material and work closely with experienced inspectors in quarries and factories, ensuring the quality control is maintained at a consistently high level.

A J S
D L U

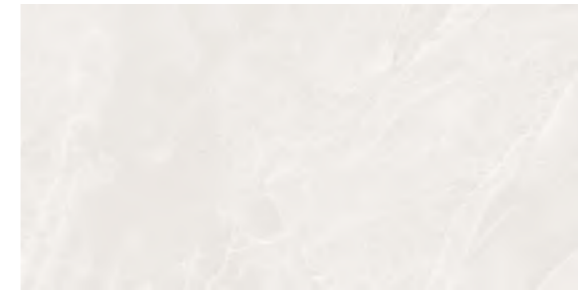


IN601212

ICON

India 印度

60x120x0.9cm / 吸水率 <0.5% / 4~6 版模面 / 全釉拋修邊石英磚



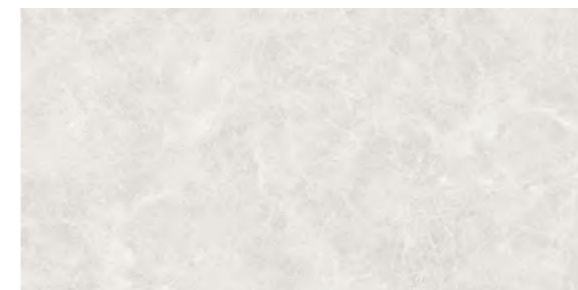
IN601211 / 60x120x0.9cm

6 版模面



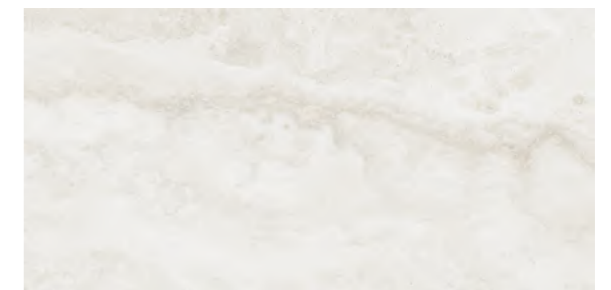
IN601212 / 60x120x0.9cm

6 版模面



IN601215 / 60x120x0.9cm

4 版模面



IN601216 / 60x120x0.9cm

4 版模面



We choose only the best from nature: our granite, marble and limestone comes from quarries all over the world. We travel worldwide to hand select specific material and work closely with experienced inspectors in quarries and factories, ensuring the quality control is maintained at a consistently high level.

A J S
D L U



KB61236

KERABEN

Spain 西班牙

60x120x1cm / 吸水率 <0.5% / 色變值 V4 / 10 版模面 / COLORBODY 3D 柔拋面修邊石英磚



KB61236 / 60x120x1cm



Keraben commenced its business activity in 1974 under the name Gres de Nules. Since then, customer service and ongoing technological innovation have formed the basis of our strategy. We design and develop our products from the drawing board to production, thereby guaranteeing unique textures and patterns for each piece.

A J S
D L U

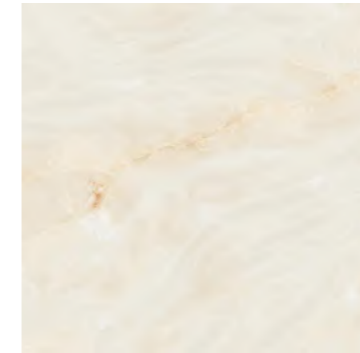


LY88006

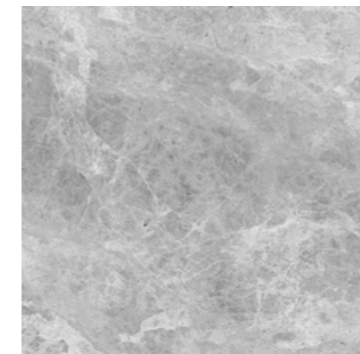
LYCOS

India 印度

80x80x0.85cm / 60x120x0.85cm / 吸水率<0.5% / 4 版模面 / 釉上抛石英砖



LY88001 / 80x80x0.85cm



LY88006 / 80x80x0.85cm



LY61217 / 60x120x0.85cm



We choose only the best from nature: our granite, marble and limestone comes from quarries all over the world. We travel worldwide to hand select specific material and work closely with experienced inspectors in quarries and factories, ensuring the quality control is maintained at a consistently high level.

A J S
D L U

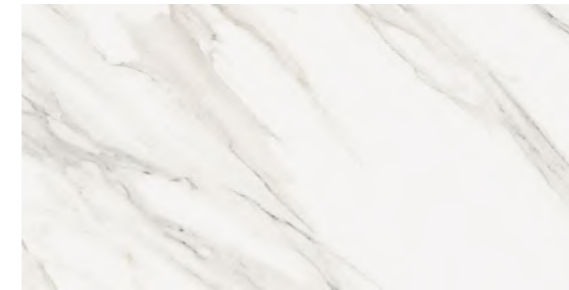


NB61288

NOVABELL

Italy 義大利

60x120x0.95cm / 吸水率 <0.5% / 色變 V3 / 20 版模面 / 修邊石英磚



NB61281 / 60x120x0.95cm

全釉拋



NB61282 / 60x120x0.95cm

全釉拋



NB61288 / 60x120x0.95cm

霧面



NB61282



NovaBell is now a solid, dynamic company that stands out for its lightning response to changing trends and technologies. The company's strength lies in its management's aptitude for teamwork, running operations in a way that combines the managerial principles of efficiency with looking after the Company's employees and the environment.

A J S
D L U



PR1216

PRISSMACER

Spain 西班牙

120x120x1.07cm / 吸水率 <0.5% / PEI 3 / 色變 V3 / 9~14 版模面 / 全釉拋修邊石英磚



PR1216 / 120x120x1.07cm

14 版模面



El Molino has been evolving incessantly since its founding in 1922, which has turned the company, created by Cipriano Castelló, into a clear and solid landmark for the ceramics industry worldwide. After nine decades of self-improvement, and thanks to the work of three generations of entrepreneurs, El Molino is today, as yesterday, a pioneering business in the promotion of ceramics as the best solution for the covering of floors and walls of all kinds of spaces.

A J S
D L U



RO401221

ROCERSA

Spain 西班牙

40x120x0.7cm / 吸水率 <0.5% / MOHS 5 / 36 版模面 / 霧面石英磚



RO401221 / 40x120x0.7cm



RO401221-1 / 40x120x0.7cm



El Molino has been evolving incessantly since its founding in 1922, which has turned the company, created by Cipriano Castelló, into a clear and solid landmark for the ceramics industry worldwide. After nine decades of self-improvement, and thanks to the work of three generations of entrepreneurs, El Molino is today, as yesterday, a pioneering business in the promotion of ceramics as the best solution for the covering of floors and walls of all kinds of spaces.

A J S
D L U

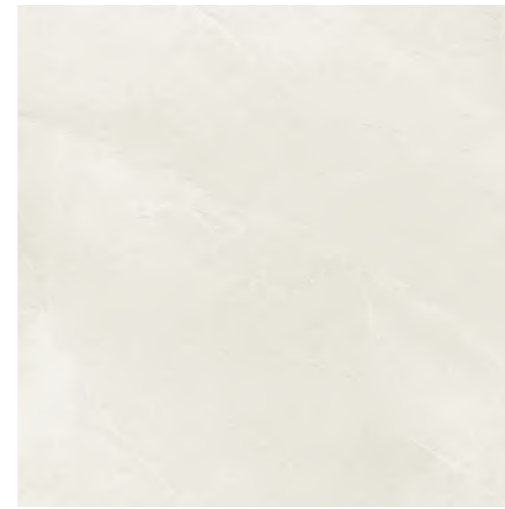


VIII32

VITACER

Spain 西班牙

100x100x1cm / 吸水率 <0.5% / 8 版模面 / 全釉抛面修边石英砖



VIII32 / 100x100x1cm



El Molino has been evolving incessantly since its founding in 1922, which has turned the company, created by Cipriano Castelló, into a clear and solid landmark for the ceramics industry worldwide. After nine decades of self-improvement, and thanks to the work of three generations of entrepreneurs, El Molino is today, as yesterday, a pioneering business in the promotion of ceramics as the best solution for the covering of floors and walls of all kinds of spaces.

A J S
D L U



MODELING WALL TILES

Natural and welcoming



BESTILE

Spain 西班牙

17x52x0.95cm / 吸水率 1% / 8 版模面 / 未修邊石英磚



BT175201 / 17x52x0.95cm



BT175202 / 17x52x0.95cm



BT175203 / 17x52x0.95cm



We contribute to create a pleasant space to provide comfort as well as meeting our expectations about maintenance, efficiency and preservation.
Contribuimos a la creación de un espacio agradable, que aporte confort y cumpla con nuestras expectativas en cuanto a mantenimiento, rendimiento y conservación.

A J S
D L U

BT175201



BT175231

BESTILE

Spain 西班牙

17x52x0.95cm / 吸水率 <1% / 6-8 版模面 / 未修邊石英磚



BT175231 / 17x52x0.95cm



We contribute to create a pleasant space to provide comfort as well as meeting our expectations about maintenance, efficiency and preservation.
Contribuimos a la creación de un espacio agradable, que aporte confort y cumpla con nuestras expectativas en cuanto a mantenimiento, rendimiento y conservación.

A J S
D L U



BESTILE

Spain 西班牙

17x52x1.15cm / 吸水率 <0.5-3% / 6 版模面 / 凹凸立體霧面未修邊石英磚



BT175246 / 17x52x1.15cm



BT175247 / 17x52x1.15cm



We contribute to create a pleasant space to provide comfort as well as meeting our expectations about maintenance, efficiency and preservation.
Contribuimos a la creación de un espacio agradable, que aporte confort y cumpla con nuestras expectativas en cuanto a mantenimiento, rendimiento y conservación.

A J S
D L U



BT175252

BESTILE

Spain 西班牙

17x52x0.7cm / 吸水率 <1% / 6 版模面 / 未修邊石英磚



BT175251 / 17x52x0.7cm



BT175252 / 17x52x0.7cm



We contribute to create a pleasant space to provide comfort as well as meeting our expectations about maintenance, efficiency and preservation.
Contribuimos a la creación de un espacio agradable, que aporte confort y cumpla con nuestras expectativas en cuanto a mantenimiento, rendimiento y conservación.

A J S
D L U

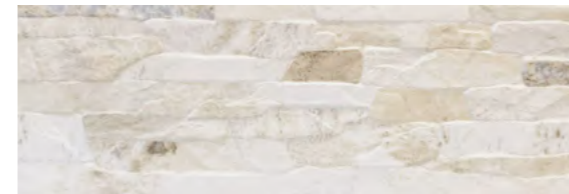


BT175263

BESTILE

Spain 西班牙

17x52x0.88cm / 吸水率 <3% / PEI 3 / 未修邊石英磚



BT175256 / 17x52x0.88cm

6 版模面



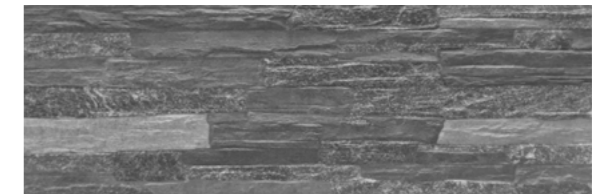
BT175262 / 17x52x0.88cm

10 版模面



BT175263 / 17x52x0.88cm

10 版模面



BT175264 / 17x52x0.88cm

10 版模面



We contribute to create a pleasant space to provide comfort as well as meeting our expectations about maintenance, efficiency and preservation.
Contribuimos a la creación de un espacio agradable, que aporte confort y cumpla con nuestras expectativas en cuanto a mantenimiento, rendimiento y conservación.

A J S
D L U



BT72802

照片來源: 好室設計 提供

BESTILE

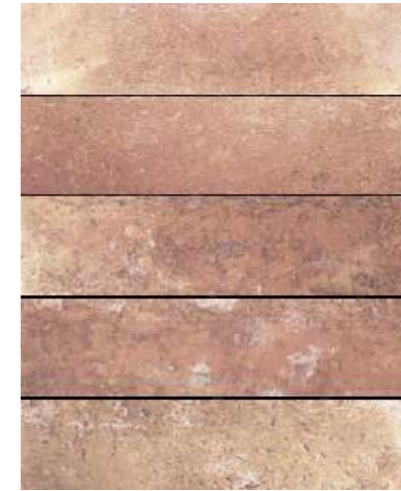
Spain 西班牙

7x28x1cm / 吸水率 <3% / 30 種磚紋變化 / 未修邊石英磚



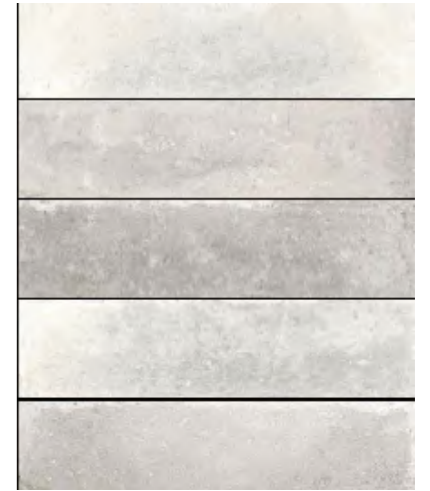
BT72801 / 7x28x1cm

30 版模面



BT72802 / 7x28x1cm

30 版模面



BT72803 / 7x28x1cm

6 版模面



We contribute to create a pleasant space to provide comfort as well as meeting our expectations about maintenance, efficiency and preservation.
Contribuimos a la creación de un espacio agradable, que aporte confort y cumpla con nuestras expectativas en cuanto a mantenimiento, rendimiento y conservación.

A J S
D L U



BT83302



BT83304

BESTILE

Spain 西班牙

8x33x0.72cm / 吸水率 <0.5% / PEI 2 / 色變 V4 / 32 版模面 / 霧面未修邊石英磚



BT83301 / 8x33x0.72cm



BT83302 / 8x33x0.72cm



BT83303 / 8x33x0.72cm



BT83304 / 8x33x0.72cm



BT83305 / 8x33x0.72cm



We contribute to create a pleasant space to provide comfort as well as meeting our expectations about maintenance, efficiency and preservation.
Contribuimos a la creación de un espacio agradable, que aporte confort y cumpla con nuestras expectativas en cuanto a mantenimiento, rendimiento y conservación.

A J S
D L U



ARCHAISTIC

Combined sizes for a decorative pattern



AB454501 / AB454501-1

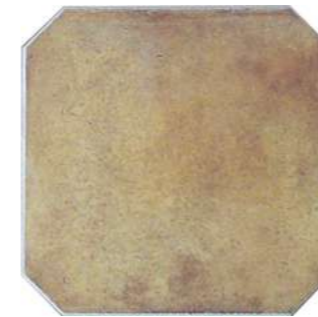


AB454501 / AB454504-1

BORJA

Spain 西班牙

45x45x0.9cm / 8x8cm / 吸水率 2.2% / MOHS 8 / 復古磚



AB454501 / 45x45x0.9cm



AB454502 / 45x45x0.9cm



AB454501-1 / 8x8cm



AB801 / 8x8cm



Borja Ceramic Tiles Design is a symbol of the Spanish Art of Life: charm, style and elegance. Borja ceramics is a trademark of the finest ceramics available on the market today. Details, such as: the perfectly straight tile endings and beautiful marble-like surface patterns give a touch of elegance, and at the same time provide a quality of using giving a place, a sense of spaciousness. Remember, perfection is not achieved by chance. True excellence resist the test of time and becomes a legend.



GA331506-1

GAYAFORES

Spain 西班牙

33.15x33.15x0.75cm / 吸水率 <0.5% / MOHS 6 / 色變 V3 / 未修邊石英磚



GA331506 / 33.15x33.15x0.75cm
32 版模面



GA331506-1 / 33.15x33.15x0.75cm
8 版模面



GA331507 / 33.15x33.15x0.75cm
32 版模面



GA331507-1 / 33.15x33.15x0.75cm
8 版模面



Over a century of experience decorating lifestyles and designing imperishable ambiances. A definitive warranty that guarantees a great ceramic product of the maximum quality and beauty. GAYAFORES has established worldwide reaching over 80 countries spread over five continents. This becomes as well part of the GAYAFORES philosophy, and the daily effort to offer new possibilities and decorative solutions, adapted to the needs of the market, which aim is to contribute in improving the quality of life of the people that understand the ceramic tradition of GAYAFORES.

A J S
D L U



NBM3001

NOVABELL

Italy 義大利

30x30x0.93cm / 15x30x0.93cm / 15x15x0.93cm / 6x25x0.93cm / 吸水率 <0.5% / 止滑度 R9 / 6 版模面 / 三合一復古地磚



NBM3001
30x30x0.93cm



NBM3003
30x30x0.93cm



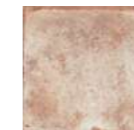
NBM15301
15x30x0.93cm



NBM15303
15x30x0.93cm



NBM1501
15x15x0.93cm



NBM1503
15x15x0.93cm



NovaBell is now a solid, dynamic company that stands out for its lightning response to changing trends and technologies. The company's strength lies in its management's aptitude for teamwork, running operations in a way that combines the managerial principles of efficiency with looking after the Company's employees and the environment.

A J S
D L U



CONTEMPORARY

Sophisticated and exclusive



ARGENTA

Spain 西班牙

60x60x0.9cm / 吸水率 <0.5% / MOHS 5 / PEI 4 / 止滑度 R9 / 色變 V2 / 6 版模面 / 霧面石英磚



AT6622 / 60x60x0.9cm



AT6623 / 60x60x0.9cm



Argenta is made up of a young and dynamic team, up for lifelong learning, that researches the current market and satisfies its needs with technical and aesthetical solutions. Its support for a new generation of a high added value product, the result of research and use of the highest technology, has been implemented by a highly qualified technical team that counts with an own area of design and development, showing the support for human value as the base for success.

A J S
D L U



BT52501



BT52502

BESTILE

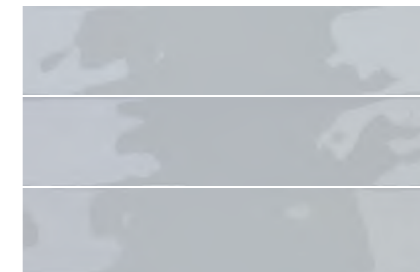
Spain 西班牙

5x25x0.85cm / 吸水率 <0.5% / 28 版模面 / 色變 V4 / 未修邊石英磚



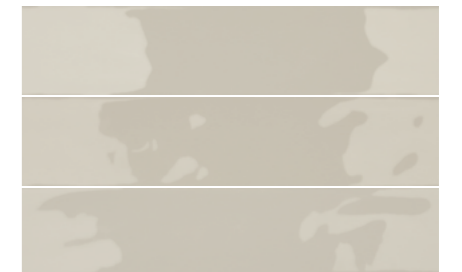
BT52501 / 5x25x0.85cm

亮面



BT52502 / 5x25x0.85cm

亮面



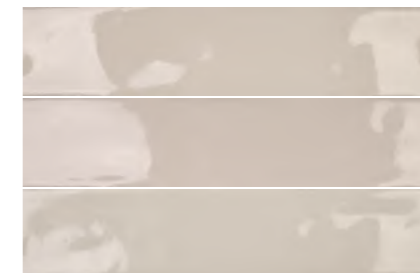
BT52503 / 5x25x0.85cm

亮面



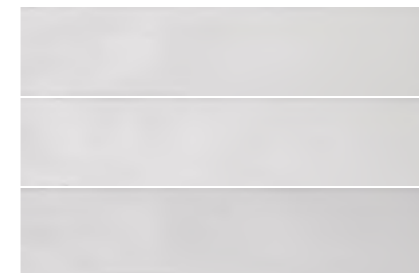
BT52504 / 5x25x0.85cm

亮面



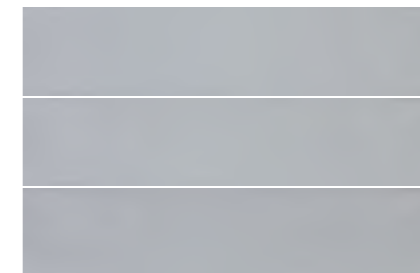
BT52505 / 5x25x0.85cm

亮面



BT52511 / 5x25x0.85cm

霧面



BT52512 / 5x25x0.85cm

霧面



We contribute to create a pleasant space to provide comfort as well as meeting our expectations about maintenance, efficiency and preservation.
Contribuimos a la creación de un espacio agradable, que aporte confort y cumpla con nuestras expectativas en cuanto a mantenimiento, rendimiento y conservación.

A J S
D L U



BT7301 / BT7308

BESTILE

Spain 西班牙

7.5x30x0.88cm / 吸水率 >10% / 56 版模面 / 亮面白胚底未修邊磚



BT7301 / 7.5x30x0.88cm



BT7305 / 7.5x30x0.88cm



BT7302 / 7.5x30x0.88cm



BT7306 / 7.5x30x0.88cm



BT7303 / 7.5x30x0.88cm



BT7307 / 7.5x30x0.88cm



BT7304 / 7.5x30x0.88cm



BT7308 / 7.5x30x0.88cm



BT7304



We contribute to create a pleasant space to provide comfort as well as meeting our expectations about maintenance, efficiency and preservation.
Contribuimos a la creación de un espacio agradable, que aporte confort y cumpla con nuestras expectativas en cuanto a mantenimiento, rendimiento y conservación.

A J S
D L U



BT7311

BESTILE

Spain 西班牙

7.5x30x0.88cm / 吸水率 >10% / 25 版模面 / 亮面白胚底未修邊磚



BT7311 / 7.5x30x0.88cm



BT7312 / 7.5x30x0.88cm



BT7313 / 7.5x30x0.88cm



BT7312 / BT7313



We contribute to create a pleasant space to provide comfort as well as meeting our expectations about maintenance, efficiency and preservation.
Contribuimos a la creación de un espacio agradable, que aporte confort y cumpla con nuestras expectativas en cuanto a mantenimiento, rendimiento y conservación.

A J S
D L U

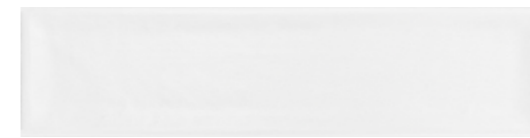


BT7325 / BT7327

BESTILE

Spain 西班牙

7.5x30x0.88cm / 吸水率 >10% / 霧面白胚底未修邊磚



BT7325 / 7.5x30x0.88cm



BT7326 / 7.5x30x0.88cm



BT7327 / 7.5x30x0.88cm



BT7328 / 7.5x30x0.88cm



BT7329 / 7.5x30x0.88cm



BT7328 / BT7329



We contribute to create a pleasant space to provide comfort as well as meeting our expectations about maintenance, efficiency and preservation.
Contribuimos a la creación de un espacio agradable, que aporte confort y cumpla con nuestras expectativas en cuanto a mantenimiento, rendimiento y conservación.

A J S
D L U



CIFRE

Spain 西班牙

5x25x0.9cm / 吸水率 >10% / 色變 V2 / 1版模面 / 亮面白胚底未修邊磚



CI52521 / 5x25x0.9cm



CI52531 / 5x25x0.9cm



CI52522 / 5x25x0.9cm



CI52532 / 5x25x0.9cm



CI52523 / 5x25x0.9cm



CI52533 / 5x25x0.9cm



CI52522



We contribute to create a pleasant space to provide comfort as well as meeting our expectations about maintenance, efficiency and preservation.
Contribuimos a la creación de un espacio agradable, que aporte confort y cumpla con nuestras expectativas en cuanto a mantenimiento, rendimiento y conservación.

A J S
D L U



CI75301

CIFRE

Spain 西班牙

7.5x30x0.82cm / 吸水率 >10% / 色變 V2 / 3 版模面 / 霧面白胚底未修邊磚



CI75301 / 7.5x30x0.82cm



CI75302 / 7.5x30x0.82cm



CI75303 / 7.5x30x0.82cm



CI75304 / 7.5x30x0.82cm



CI75302



We contribute to create a pleasant space to provide comfort as well as meeting our expectations about maintenance, efficiency and preservation.
Contribuimos a la creación de un espacio agradable, que aporte confort y cumpla con nuestras expectativas en cuanto a mantenimiento, rendimiento y conservación.

A J S
D L U

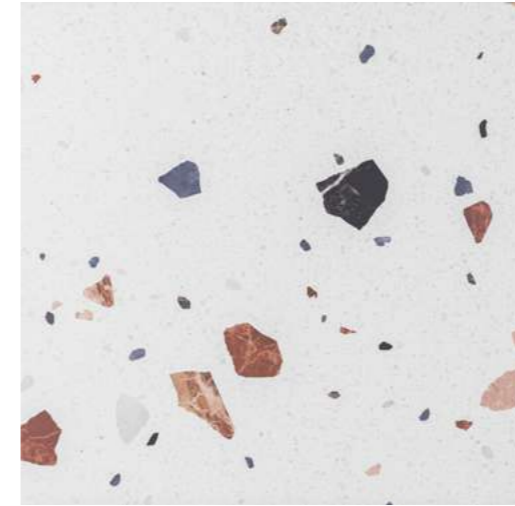


CR5801

CERPA

Spain 西班牙

58.5x58.5x0.9cm / 吸水率 <1% / 4 版模面 / 修邊石英磚



CR5801 / 58.5x58.5x0.9cm



CR5801



We contribute to create a pleasant space to provide comfort as well as meeting our expectations about maintenance, efficiency and preservation.
Contribuimos a la creación de un espacio agradable, que aporte confort y cumpla con nuestras expectativas en cuanto a mantenimiento, rendimiento y conservación.

A J S
D L U



ECCENTRICO

西班牙製
Italy 義大利進口

4.6x37.5x0.85cm / 吸水率 <0.5% / MOHS 5 / 止滑度 R9 / 色變值 V3 / 15 版模面 / 上釉未修邊石英磚



EE463701 / 4.6x37.5x0.85cm



EE463702 / 4.6x37.5x0.85cm



EE463703 / 4.6x37.5x0.85cm



EE463704 / 4.6x37.5x0.85cm



EE463705 / 4.6x37.5x0.85cm



EE463706 / 4.6x37.5x0.85cm



Self-declared environmental claim. In keeping with its commitment to environmental care, Saloni has been assessed as complying with the UNE-EN ISO 14021 standard. CO2 emissions are reduced by up to 35%. Given its awareness of these needs, Saloni has striven to ensure that its products offer such benefits and they provide up to 2 points needed for the obtainment of a LEED certificate.

A J S
D L U



EQ1012



EQ1014

EQUIPE

Spain 西班牙

10x10x0.8cm / 吸水率 <0.5% / MOHS 7 / 止滑度 R10 / 色變值 V3 / 15 版模面 / 未修邊石英磚



EQ1011 / 10x10x0.8cm



EQ1012 / 10x10x0.8cm



EQ1013 / 10x10x0.8cm



EQ1014 / 10x10x0.8cm



EQ1015 / 10x10x0.8cm



EQ1016 / 10x10x0.8cm



Self-declared environmental claim. In keeping with its commitment to environmental care, Saloni has been assessed as complying with the UNE-EN ISO 14021 standard. CO2 emissions are reduced by up to 35%. Given its awareness of these needs, Saloni has striven to ensure that its products offer such benefits and they provide up to 2 points needed for the obtainment of a LEED certificate.

A J S
D L U

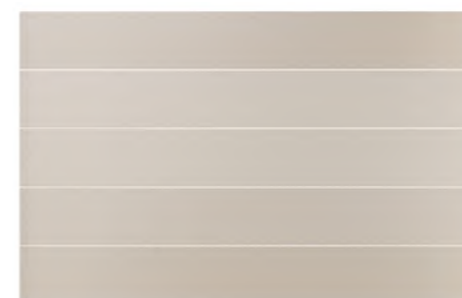


EQ75601

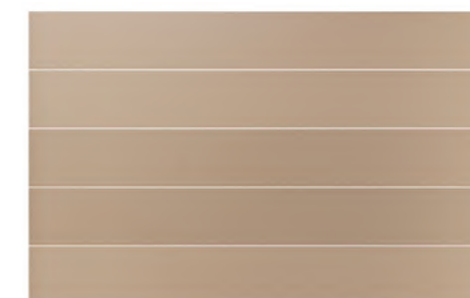
EQUIPE

Spain 西班牙

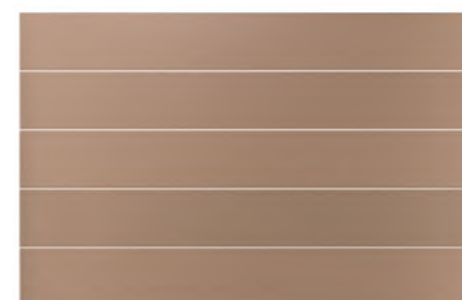
7.5x60x0.8cm / 吸水率 <0.5% / MOHS 7 / PEI 3 / 止滑度 R9 / 色變值 V3 / 60 版模面 / 霧面未修邊石英磚



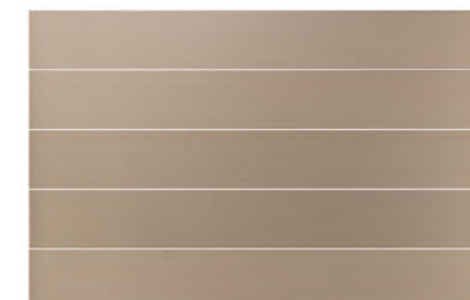
EQ75601 / 7.5x60x0.8cm



EQ75602 / 7.5x60x0.8cm



EQ75603 / 7.5x60x0.8cm



EQ75604 / 7.5x60x0.8cm



EQ75604



Self-declared environmental claim. In keeping with its commitment to environmental care, Saloni has been assessed as complying with the UNE-EN ISO 14021 standard. CO2 emissions are reduced by up to 35%. Given its awareness of these needs, Saloni has striven to ensure that its products offer such benefits and they provide up to 2 points needed for the obtainment of a LEED certificate.

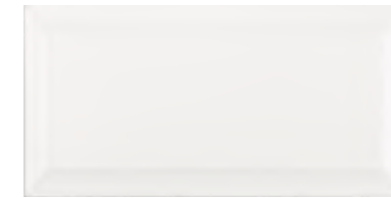
A J S
D L U



FABRESA

Spain 西班牙

10x20x0.7cm / 吸水率 <10% / 1版模面 / 紐約亮面地鐵磚



SNI02001 / 10x20x0.7cm



SNI02002 / 10x20x0.7cm



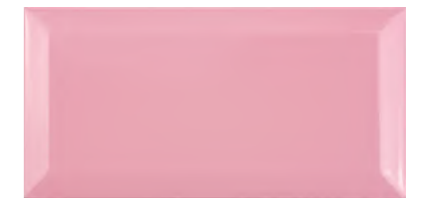
SNI02003 / 10x20x0.7cm



SNI02004 / 10x20x0.7cm



SNI02005 / 10x20x0.7cm



SNI02009 / 10x20x0.7cm

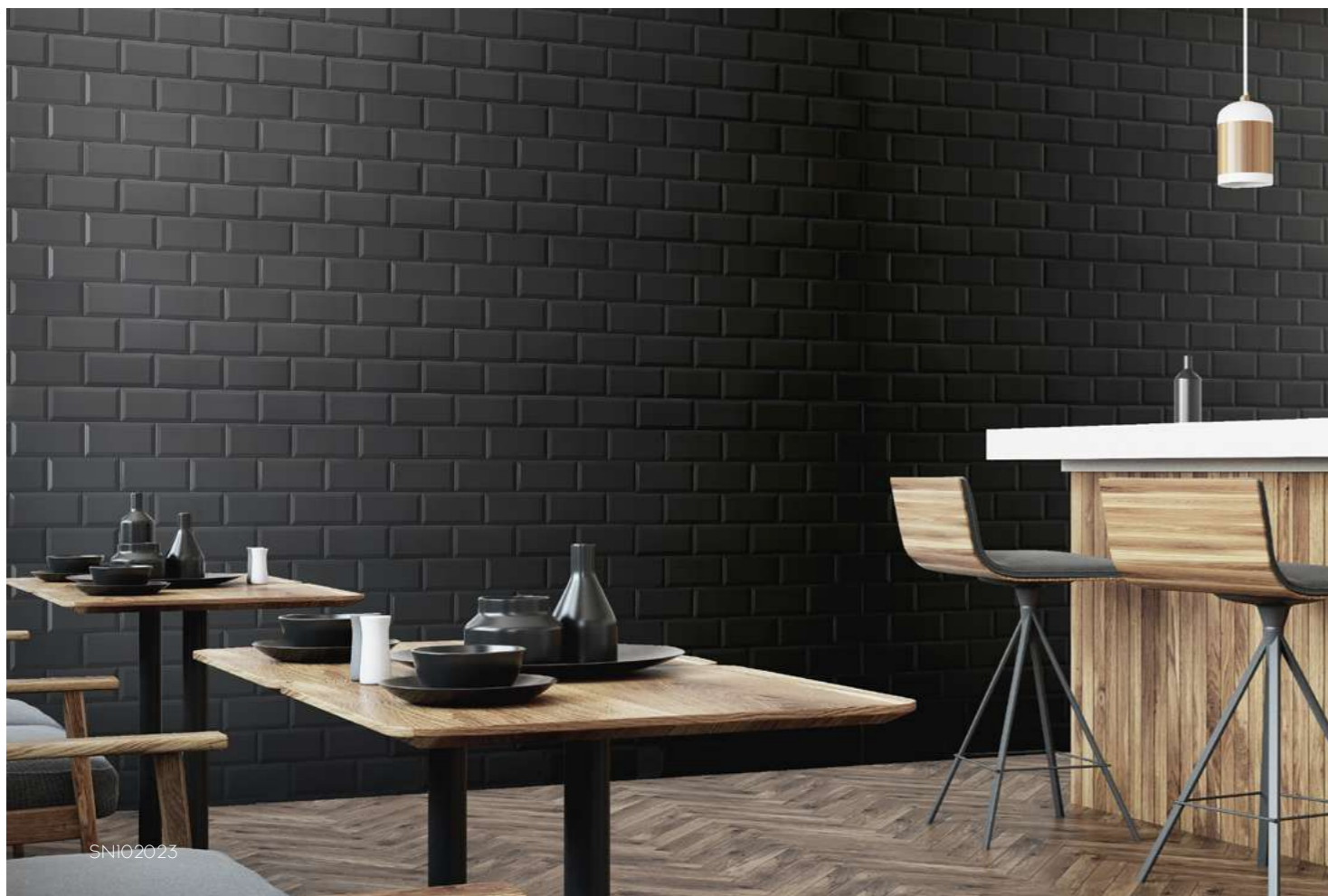


SNI02010 / 10x20x0.7cm



Self-declared environmental claim. In keeping with its commitment to environmental care, Saloni has been assessed as complying with the UNE-EN ISO 14021 standard. CO2 emissions are reduced by up to 35%. Given its awareness of these needs, Saloni has striven to ensure that its products offer such benefits and they provide up to 2 points needed for the obtainment of a LEED certificate.

A J S
D L U

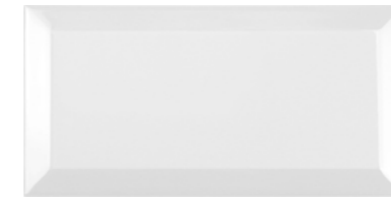


SNI02023

FABRESA

Spain 西班牙

10x20x0.7cm / 吸水率 <10% / 1版模面 / 紐約霧面地鐵磚



SNI02021 / 10x20x0.7cm



SNI02022 / 10x20x0.7cm



SNI02023 / 10x20x0.7cm



SNI02021



Self-declared environmental claim. In keeping with its commitment to environmental care, Saloni has been assessed as complying with the UNE-EN ISO 14021 standard. CO2 emissions are reduced by up to 35%. Given its awareness of these needs, Saloni has striven to ensure that its products offer such benefits and they provide up to 2 points needed for the obtainment of a LEED certificate.

A J S
D L U



FY30931 / FY30931-1A

EURO CERAMIC FLYZONE

Italy 義大利

30x90x0.8cm / 吸水率 <0.5% / PEI 4 / 止滑度 R9 / 色變 V2 / 霧面修邊石英磚

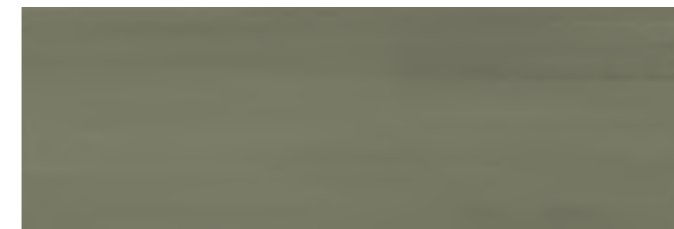


FY30931 / 30x90x0.8cm



FY30931-1A / 30x90x0.8cm

3 版模面



FY30932 / 30x90x0.8cm



FY30933 / 30x90x0.8cm



FY30931 / FY30932 / FY30933



Leonardo Ceramica, leader in the production of tiles, floor coverings, ceramics and porcelain and development of technical solutions and innovative design.

A J S
D L U



FY6I246-1A

EURO CERAMIC FLYZONE

Italy 義大利

60x120x0.9cm / 吸水率 <0.5% / 止滑度 RIO A+B / 3 版模面 / 修邊石英磚



FY6I246-1A / 60x120x0.9cm



FY6I246-1B / 60x120x0.9cm

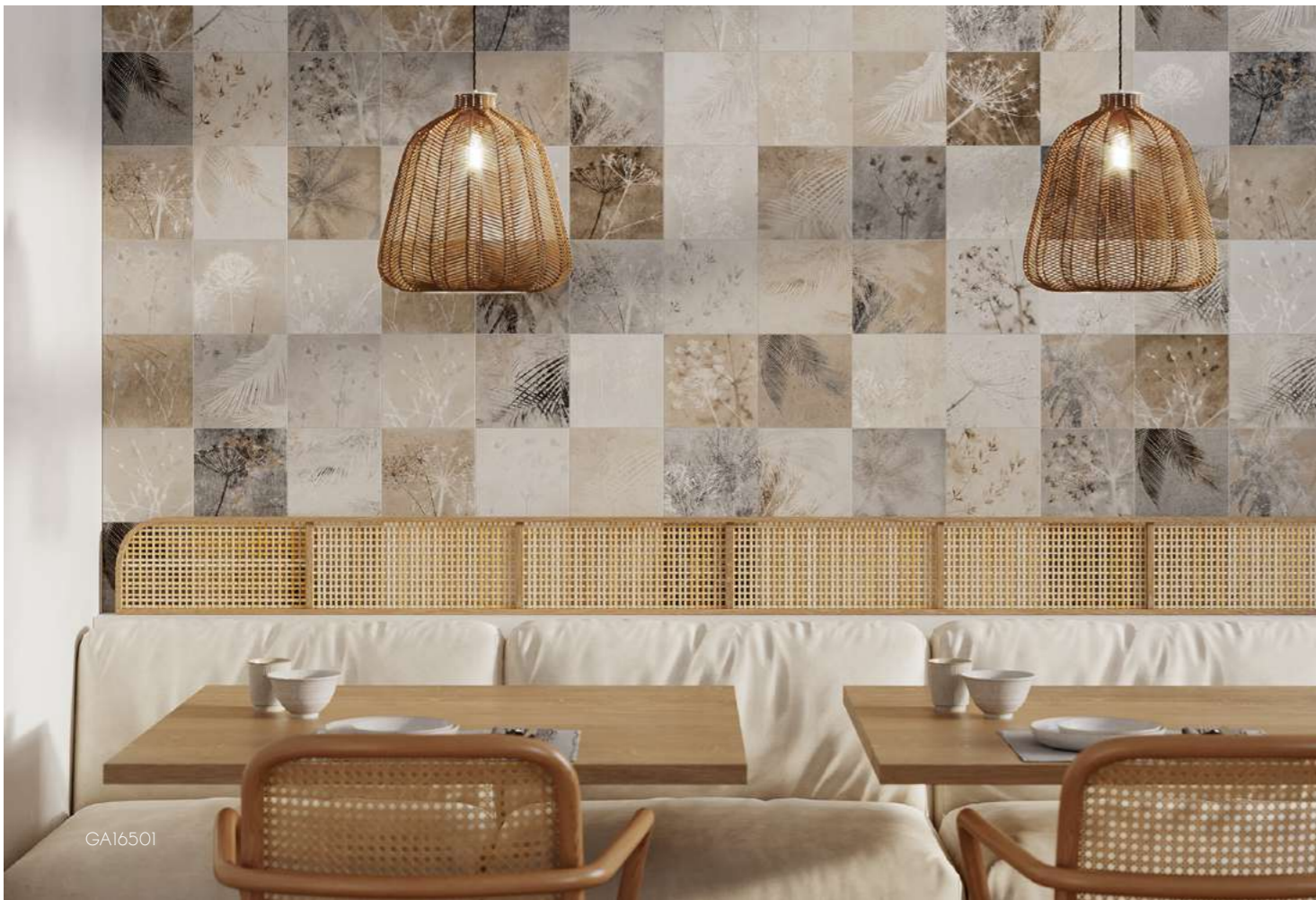


FY6I246-1B



Leonardo Ceramica, leader in the production of tiles, floor coverings, ceramics and porcelain and development of technical solutions and innovative design.

A J S
D L U



GA16501

GAYAFORES

Spain 西班牙

16.5x16.5x0.75cm / 吸水率 <0.5% / MOHS 6 / 止滑度 R9 / 52 版模面 / 未修邊石英磚

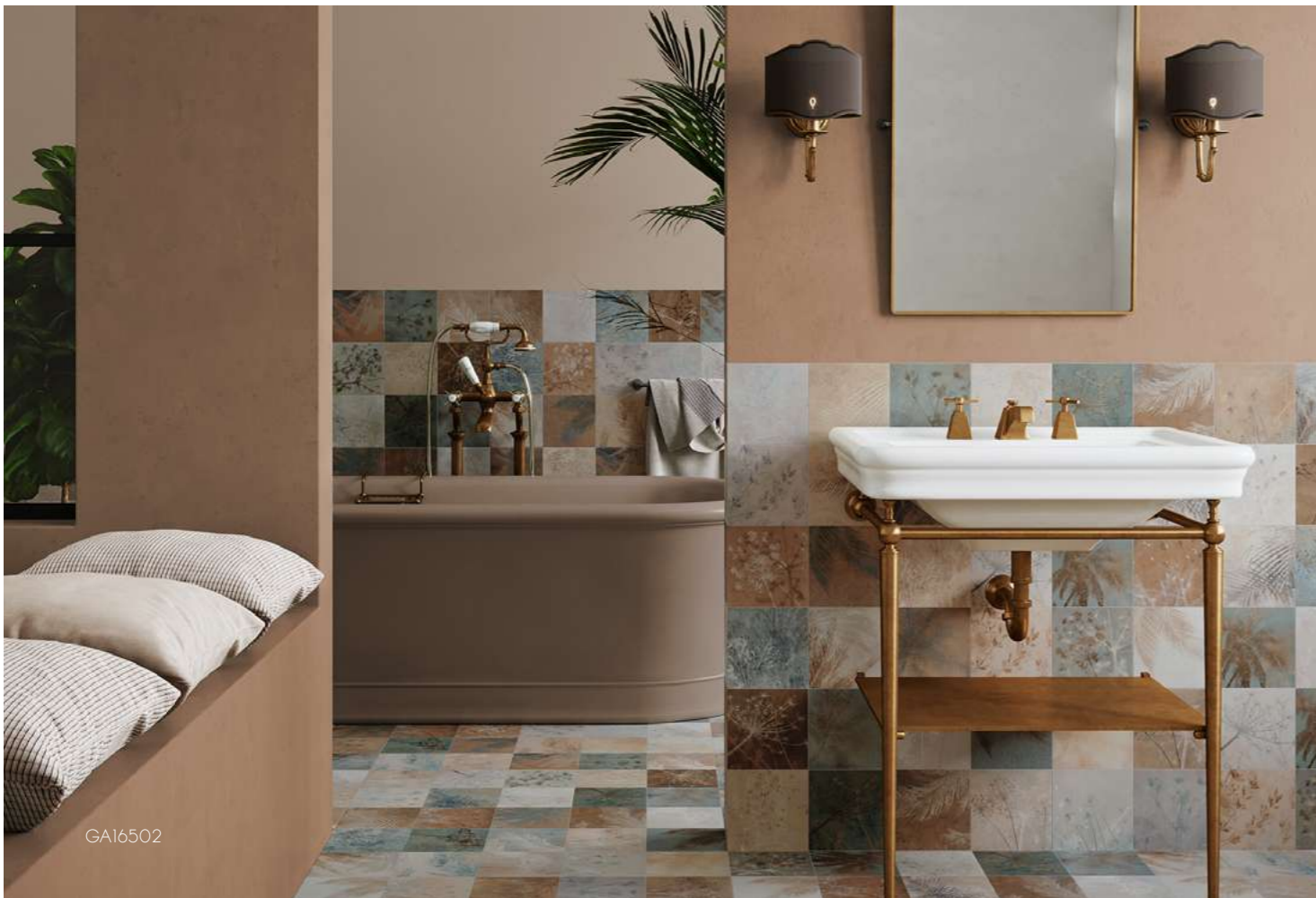


GA16501 / 16.5X16.5x0.75cm



拼貼效果

隨機出貨 不可挑色



GA16502



GA16502 / 16.5X16.5x0.75cm



拼貼效果

隨機出貨 不可挑色



Over a century of experience decorating lifestyles and designing imperishable ambiances. A definitive warranty that guarantees a great ceramic product of the maximum quality and beauty. GAYAFORES has established worldwide reaching over 80 countries spread over five continents. This becomes as well part of the GAYAFORES philosophy, and the daily effort to offer new possibilities and decorative solutions, adapted to the needs of the market, which aim is to contribute in improving the quality of life of the people that understand the ceramic tradition of GAYAFORES.

A J S
D L U



GA326205



GA326201

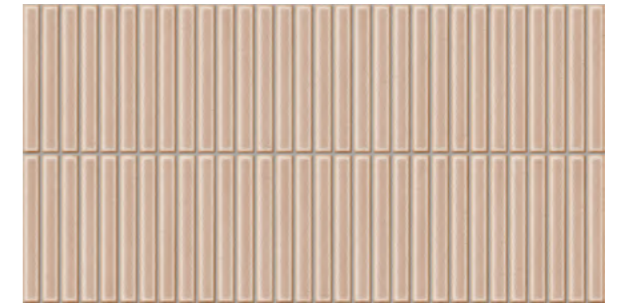
GAYAFORES

Spain 西班牙

32x62.5x0.9 cm / 吸水率 <0.5% / MOHS 5 / 色變 VI / 凹凸立體霧面未修邊石英磚



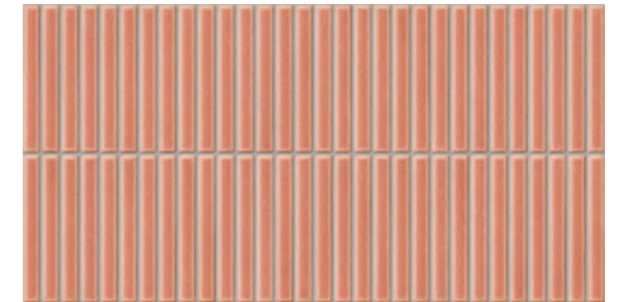
GA326201 / 32x62.5x0.9cm



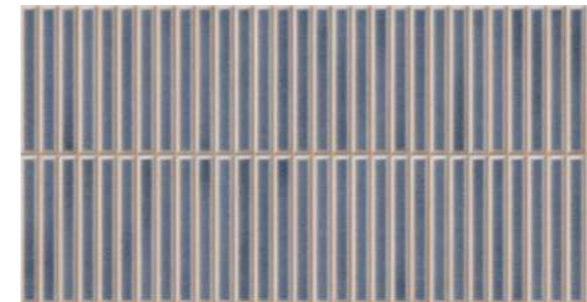
GA326202 / 32x62.5x0.9cm



GA326203 / 32x62.5x0.9cm



GA326204 / 32x62.5x0.9cm



GA326205 / 32x62.5x0.9cm



Over a century of experience decorating lifestyles and designing imperishable ambiances. A definitive warranty that guarantees a great ceramic product of the maximum quality and beauty. GAYAFORES has established worldwide reaching over 80 countries spread over five continents. This becomes as well part of the GAYAFORES philosophy, and the daily effort to offer new possibilities and decorative solutions, adapted to the needs of the market, which aim is to contribute in improving the quality of life of the people that understand the ceramic tradition of GAYAFORES.

A J S
D L U



GA326211

GAYAFORES

Spain 西班牙

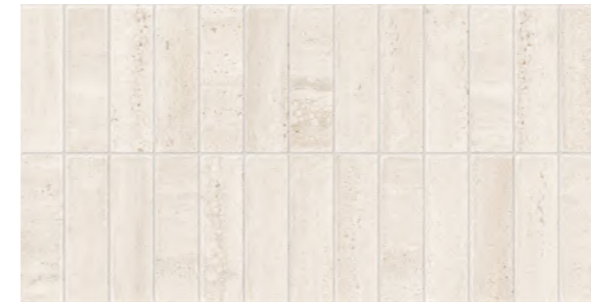
32x62.5x0.9 cm / 吸水率 <0.5% / 色變 V3 / 8 版模面 / 霧面未修邊石英磚



GA326211 / 32x62.5x0.9cm



GA326212 / 32x62.5x0.9cm



GA326216 / 32x62.5x0.9cm



GA326217 / 32x62.5x0.9cm



GA326217



Over a century of experience decorating lifestyles and designing imperishable ambiances. A definitive warranty that guarantees a great ceramic product of the maximum quality and beauty. GAYAFORES has established worldwide reaching over 80 countries spread over five continents. This becomes as well part of the GAYAFORES philosophy, and the daily effort to offer new possibilities and decorative solutions, adapted to the needs of the market, which aim is to contribute in improving the quality of life of the people that understand the ceramic tradition of GAYAFORES.

A J S
D L U

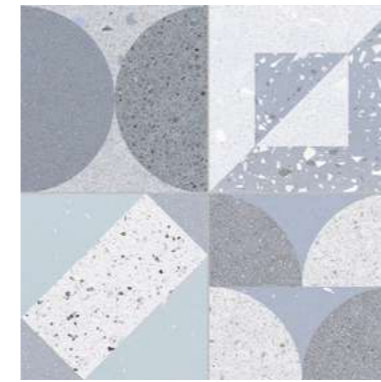


GA331502

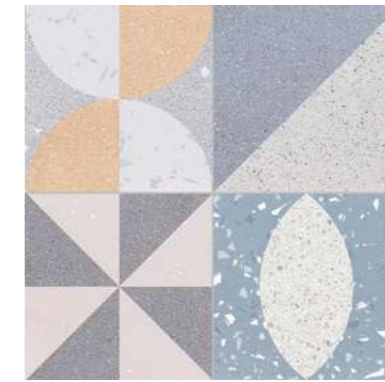
GAYAFORES

Spain 西班牙

33.15x33.15x0.76cm / 吸水率 <0.5% / MOHS 5 / PEI 4 / 止滑度 C1 / 14 版模面 / 石英地壁磚



GA331501 / 33.15X33.15x0.76cm



GA331502 / 33.15X33.15x0.76cm



Over a century of experience decorating lifestyles and designing imperishable ambiances. A definitive warranty that guarantees a great ceramic product of the maximum quality and beauty. GAYAFORES has established worldwide reaching over 80 countries spread over five continents. This becomes as well part of the GAYAFORES philosophy, and the daily effort to offer new possibilities and decorative solutions, adapted to the needs of the market, which aim is to contribute in improving the quality of life of the people that understand the ceramic tradition of GAYAFORES.

A J S
D L U



GA331512

GAYAFORES

Spain 西班牙

33.15x33.15x0.75cm / 吸水率 <0.5% / 10 版模面 / 霧面未修邊磚石英磚



GA331511 / 33.15X33.15x0.75cm



GA331512 / 33.15X33.15x0.75cm



GA331513 / 33.15X33.15x0.75cm



GA331513



Over a century of experience decorating lifestyles and designing imperishable ambiances. A definitive warranty that guarantees a great ceramic product of the maximum quality and beauty. GAYAFORES has established worldwide reaching over 80 countries spread over five continents. This becomes as well part of the GAYAFORES philosophy, and the daily effort to offer new possibilities and decorative solutions, adapted to the needs of the market, which aim is to contribute in improving the quality of life of the people that understand the ceramic tradition of GAYAFORES.

A J S
D L U

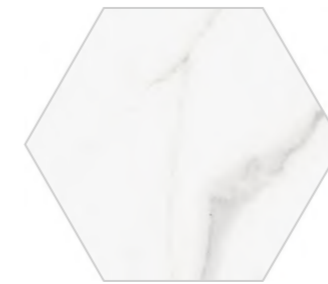


KE2361

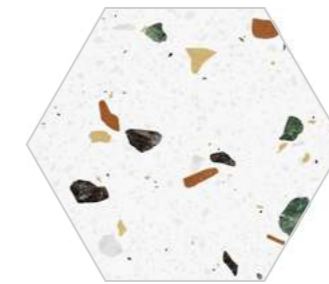
KEROS

Spain 西班牙

23x27x0.85cm / 吸水率 <0.5% < E < 3% / PEI 4 / 止滑度 C1 / 19~20 版面 / 霧面石英磚



KE2361 / 23.2x26.7x0.85cm
19 種花色



KE2363 / 23.2x26.7x0.85cm
20 種花色



KE2363



Keraben inició su actividad en 1974 bajo la denominación Gres de Nules. Desde entonces, la orientación al cliente y la innovación tecnológica continua han guiado nuestros pasos. Las mejores materias primas, la última tecnología cerámica y la vocación de excelencia de nuestros profesionales la hacen posible cada día. La calidad va íntimamente ligada a nuestra manera de hacer las cosas.

A J S
D L U



MP222502



MP222504

MONOPOLE

Spain 西班牙

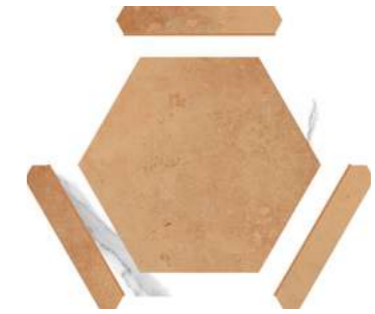
22x25x0.8cm / 吸水率 <0.5% / MOHS 5 / PEI 4 / 24 版模面 / 霧面石英磚



MP222501 / 22x25x0.8cm



MP222502 / 22x25x0.8cm



MP222503 / 22x25x0.8cm



MP222504 / 22x25x0.8cm



MP222505 / 22x25x0.8cm



MP222506 / 22x25x0.8cm



Over a century of experience decorating lifestyles and designing imperishable ambiances. A definitive warranty that guarantees a great ceramic product of the maximum quality and beauty. GAYAFORES has established worldwide reaching over 80 countries spread over five continents. This becomes as well part of the GAYAFORES philosophy, and the daily effort to offer new possibilities and decorative solutions, adapted to the needs of the market, which aim is to contribute in improving the quality of life of the people that understand the ceramic tradition of GAYAFORES.

A J S
D L U



NB61276-1A

NOVABELL

Italy 義大利

60x120x0.9cm / 吸水率 0.5% / 2 版模面 (無限連紋) / 修邊石英磚



NB61276-1A / 60x120x0.9cm



NB61276-1B / 60x120x0.9cm



NovaBell is now a solid, dynamic company that stands out for its lightning response to changing trends and technologies. The company's strength lies in its management's aptitude for teamwork, running operations in a way that combines the managerial principles of efficiency with looking after the Company's employees and the environment.

A J S
D L U



NB61277-1A

NOVABELL

Italy 義大利

60x120x0.9cm / 吸水率 0.5% / 2 版模面 (無限連紋) / 修邊石英磚



NB61277-1A / 60x120x0.9cm



NB61277-1B / 60x120x0.9cm



NovaBell is now a solid, dynamic company that stands out for its lightning response to changing trends and technologies. The company's strength lies in its management's aptitude for teamwork, running operations in a way that combines the managerial principles of efficiency with looking after the Company's employees and the environment.

A J S
D L U



NB61278 特

NOVABELL

Italy 義大利

60x120x0.9cm / 吸水率 0.5% / 2 版模面 (無限連紋) / 半拋面修邊石英磚



NB61278 特 / 60x120x0.9cm



NovaBell is now a solid, dynamic company that stands out for its lightning response to changing trends and technologies. The company's strength lies in its management's aptitude for teamwork, running operations in a way that combines the managerial principles of efficiency with looking after the Company's employees and the environment.

A J S
D L U



RI15742

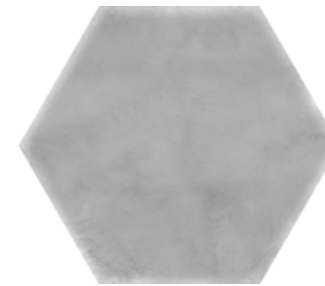
RIBESALBES

Spain 西班牙

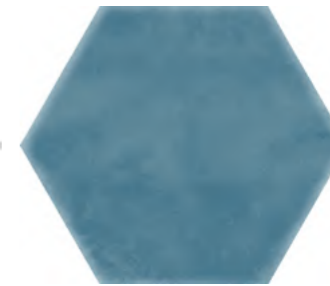
15x17.3x0.82cm / 吸水率 <0.5% / PEI 4 / 止滑度 R10 / 4 版模面 / 未修邊石英磚



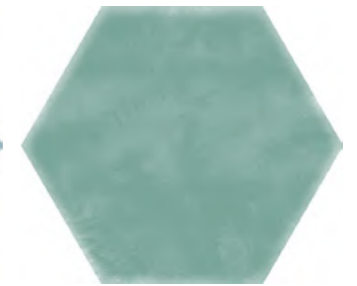
RI15731 / 15x17.3x0.82cm



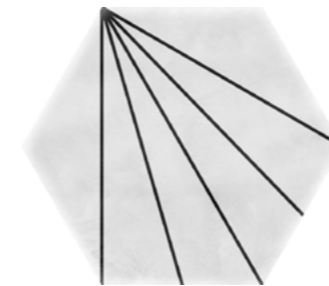
RI15732 / 15x17.3x0.82cm



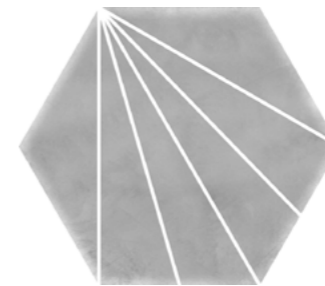
RI15733 / 15x17.3x0.82cm



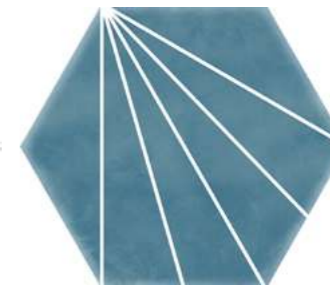
RI15734 / 15x17.3x0.82cm



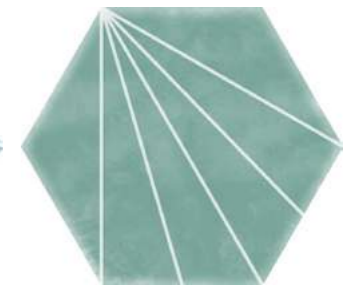
RI15741 / 15x17.3x0.82cm



RI15742 / 15x17.3x0.82cm



RI15743 / 15x17.3x0.82cm



RI15744 / 15x17.3x0.82cm



RI15734 / RI15744



Over a century of experience decorating lifestyles and designing imperishable ambiances. A definitive warranty that guarantees a great ceramic product of the maximum quality and beauty. GAYAFORES has established worldwide reaching over 80 countries spread over five continents. This becomes as well part of the GAYAFORES philosophy, and the daily effort to offer new possibilities and decorative solutions, adapted to the needs of the market, which aim is to contribute in improving the quality of life of the people that understand the ceramic tradition of GAYAFORES.

A J S
D L U



XC2084

XCLUSIVE

Italy 義大利

20.5x20.5x1cm / 吸水率 <0.5% / PEI 4 / 止滑度 R10 / 止滑石英磚



XC2081 / 20.5x20.5x1cm



XC2082 / 20.5x20.5x1cm 乙板模面



XC2083 / 20.5x20.5x1cm 乙板模面



XC2084 / 20.5x20.5x1cm



XC2082



Keraben commenced its business activity in 1974 under the name Gres de Nules. Since then, customer service and ongoing technological innovation have formed the basis of our strategy. We design and develop our products from the drawing board to production, thereby guaranteeing unique textures and patterns for each piece.

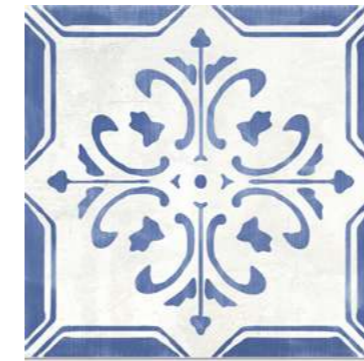
A J S
D L U



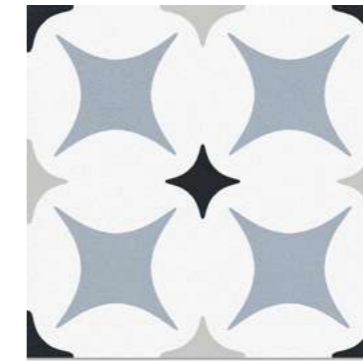
XCLUSIVE

Italy 義大利

20.5x20.5x1cm / 吸水率 <0.5% / PEI 4 / 止滑度 R10 / 止滑石英磚



XC2085 / 20.5x20.5x1cm



XC2086 / 20.5x20.5x1cm



XC2087 / 20.5x20.5x1cm



XC2088 / 20.5x20.5x1cm

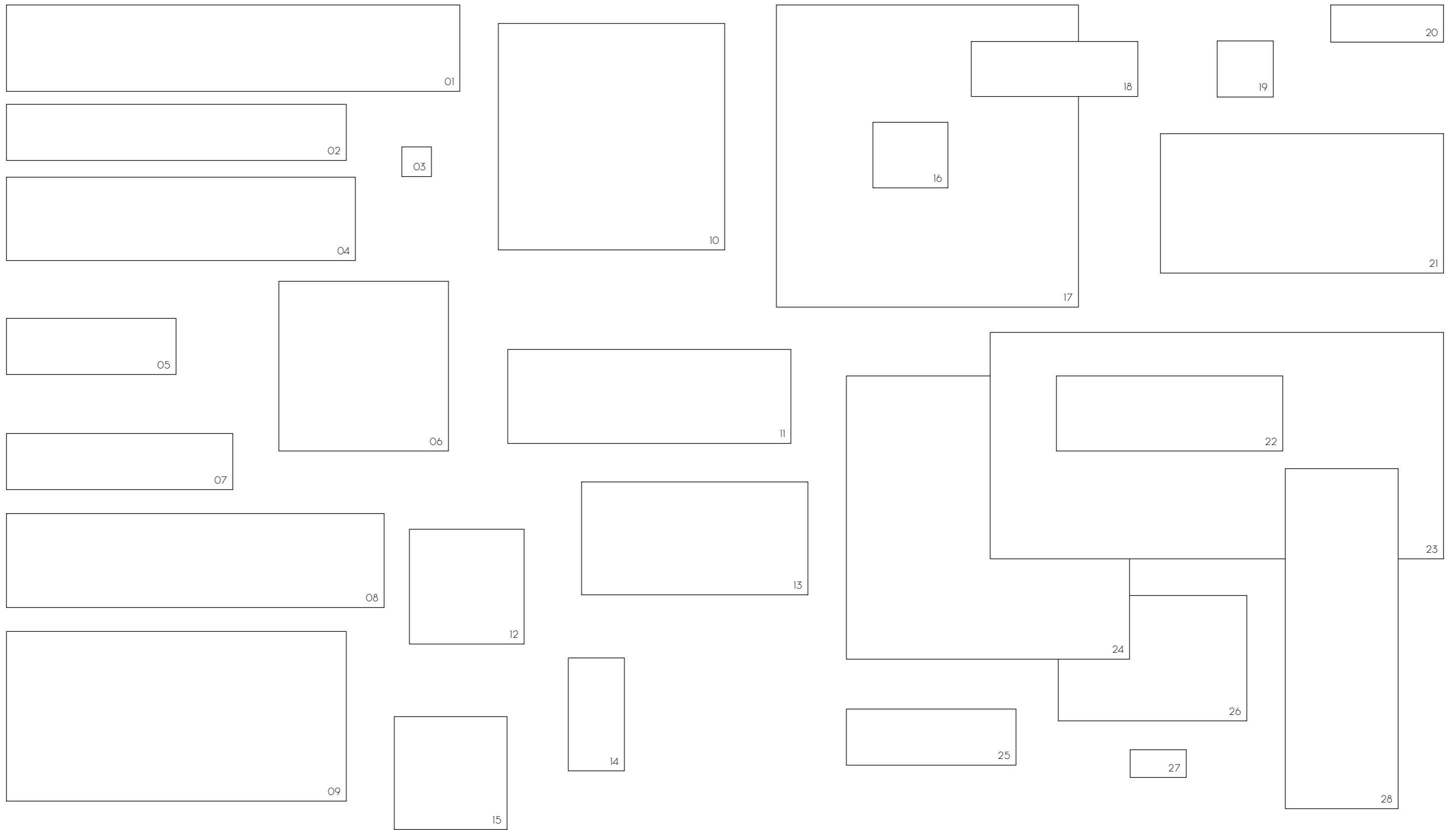


XC2086



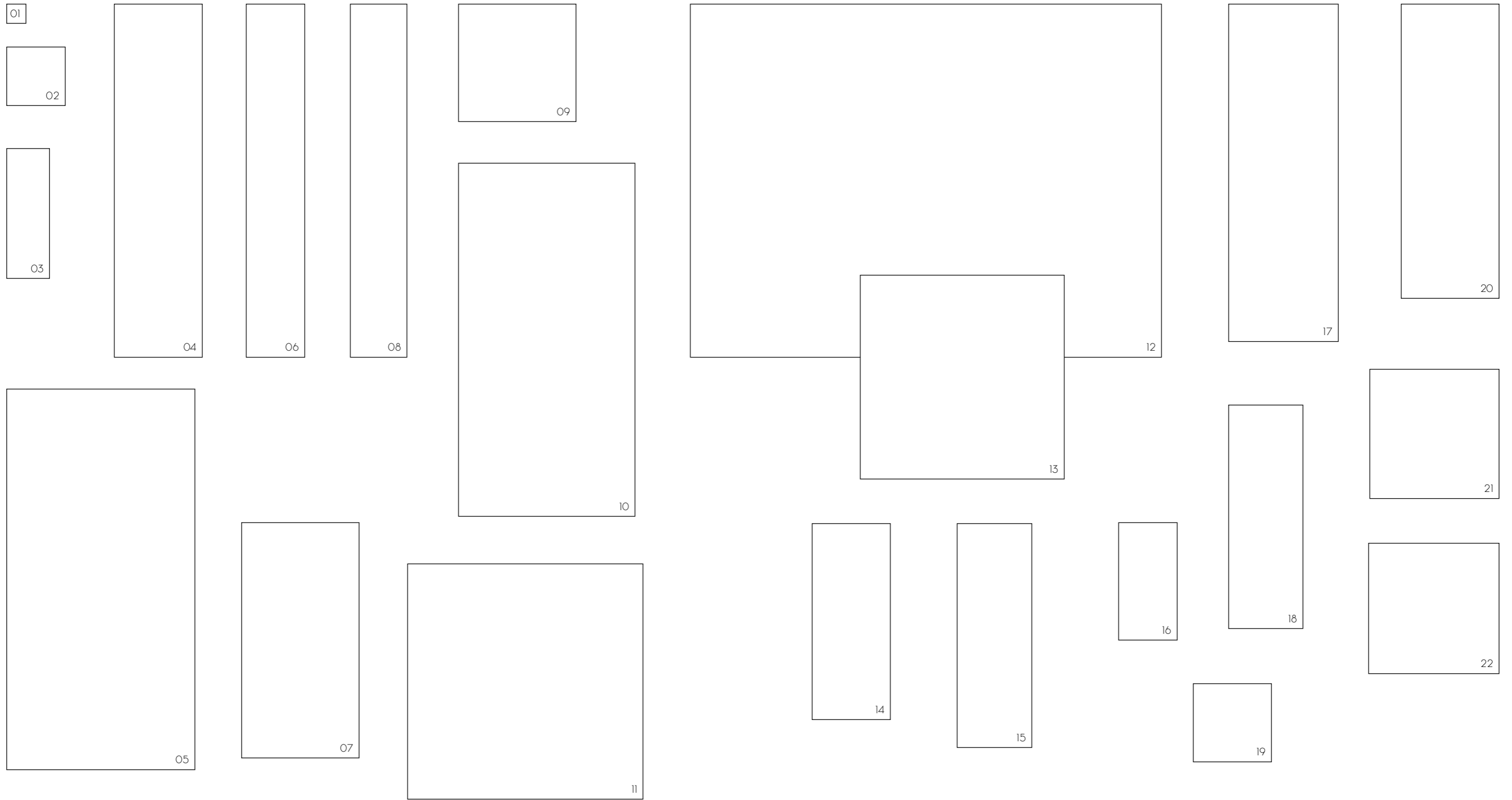
Keraben commenced its business activity in 1974 under the name Gres de Nules. Since then, customer service and ongoing technological innovation have formed the basis of our strategy. We design and develop our products from the drawing board to production, thereby guaranteeing unique textures and patterns for each piece.

A J S
D L U



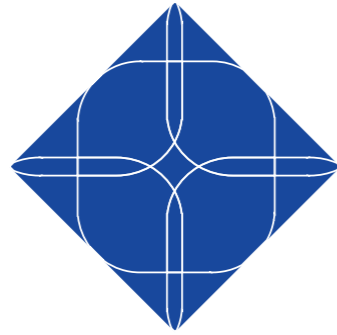
PROPORTION 1:10

- | | | | | | |
|-----------------|--------------|-----------------|-----------------|--------------|---------------|
| 01. 23x120cm | 06. 45x45cm | 11. 75x25cm | 16. 17.5x20cm | 21. 37x75cm | 26. 33.3x50cm |
| 02. 15x90cm | 07. 15x60cm | 12. 30.5x30.5cm | 17. 80x80cm | 22. 20x60cm | 27. 15x7.5cm |
| 03. 8x8cm | 08. 100x25cm | 13. 30x60cm | 18. 14.7x44.2cm | 23. 60x120cm | 28. 30x90cm |
| 04. 22.2x92.4cm | 09. 90x45cm | 14. 15x30cm | 19. 15x15cm | 24. 75x75cm | |
| 05. 15x45cm | 10. 60x60cm | 15. 30x30cm | 20. 10x30cm | 25. 45x15cm | |



PROPORTION 1:10

- | | | | | | |
|----------------|---------------|--------------|-----------------|-------------|-----------------|
| 01. 5x5cm | 05. 48x97cm | 09. 30x30cm | 13. 52x52cm | 17. 28x86cm | 21. 33x33cm |
| 02. 15x15cm | 06. 15x90cm | 10. 45x90cm | 14. 20x50cm | 18. 19x57cm | 22. 33.3x33.3cm |
| 03. 11x33.15cm | 07. 30x60cm | 11. 60x60cm | 15. 19.1x57.1cm | 19. 20x20cm | |
| 04. 22.5x90cm | 08. 14.5x90cm | 12. 90x120cm | 16. 15x30cm | 20. 25x76cm | |



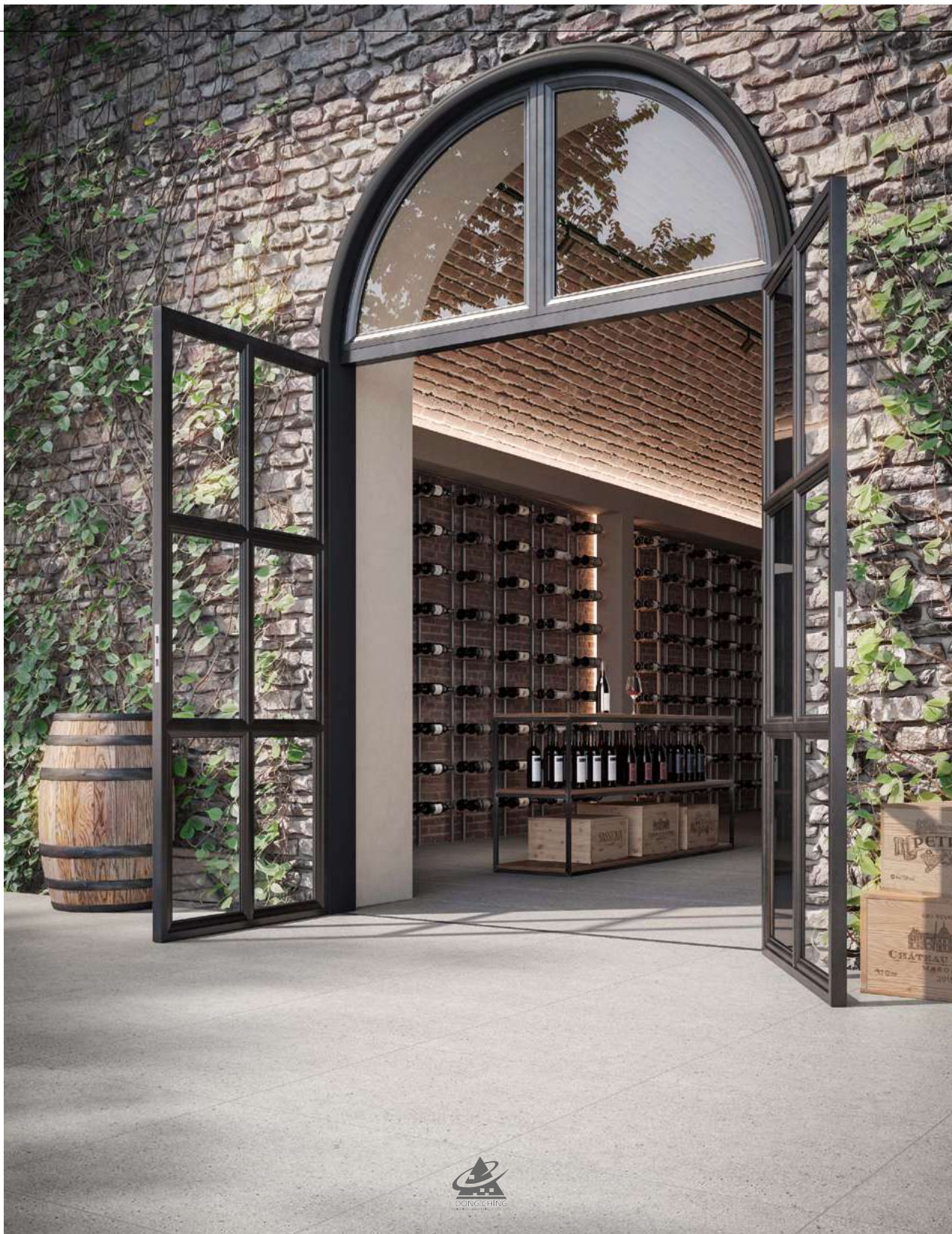
精彩 磚造

Share Tile Ideas



<http://www.tileideas.net>





高雄東慶建材

總公司

高雄三民區九如一路234號

TEL 07-384-8365

FAX 07-387-3347

E-MAIL dong.ching@msa.hinet.net

台北東慶建材

分公司

新北市林口區南勢五街30號

TEL 02-2606-8851

FAX 02-2606-8810

台中東慶建材

分公司

台中市西屯區廣福路235-3號

TEL 04-2452-2030

FAX 04-2452-3053

E-MAIL dongching@hotmail.com.tw