

DIANMING

DIANMING

**SHENZHEN DIANMING TECH CO., LTD.**

Address: Dianming Building,25,Liu Xian 3rd Road,Bao An District,Shenzhen,China  
TEL: +86-755-86335888    FAX: +86-755-86026222    WEB: [www.darmon.com](http://www.darmon.com)

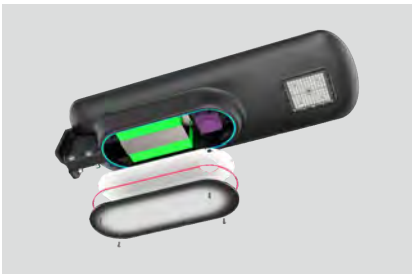
**SHENZHEN DIANMING TECH CO., LTD.**



## S6 SOLAR LED STREET LIGHT 20-60W



Besides the main lighting, the special ambient light decorates surroundings.



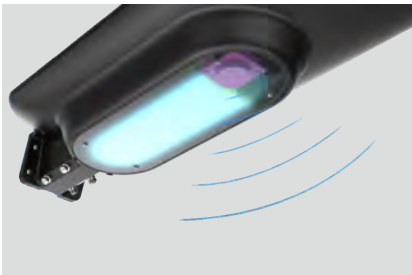
Easy and simple to maintain at frontal side.



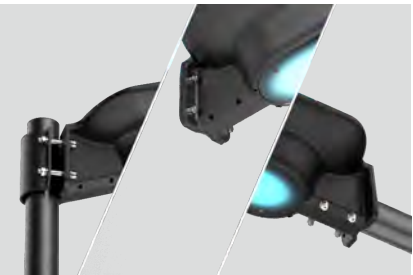
Integrated high-pressure aluminum alloy casting housing, with thickened design, which has better heat dissipation and anti-corrosion ability, and longer life span. Strengthened structure can withstand 4 times of its gravity simply.



The structure around the light emitting surface is optically treated to effectively control the glare and upward light leakage, which minimized light pollution and protected environment.



Microwave sensor and time control optional.



Horizontal/vertical/wall mounted installation available.

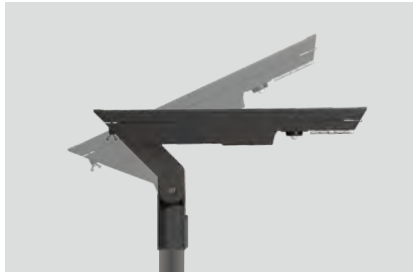
Model	20	30	40	50	60
Lumen	2000 lm	3000 lm	4000 lm	5000 lm	6000 lm
Mono PV panel	30W	30W	48W	48W	48W
Li(NiCoMn)O2	120Wh	195Wh	244Wh	317Wh	366Wh
LiFePO4	154Wh	230Wh	230Wh	307Wh	384Wh
Mono PV panel efficiency	20-23%				
Charging time	4-6 hours				
Discharge time	3 days (intelligent mode, less than 200 times/day) + 4 days low brightness				
Control	Motion/PIR sensor + light control +low battery level dimming				
Color Temperature	Warm white 3000K, Neural white 4000K, cold white 5000K,CRI>70				
Material	Aluminum + stainless steel + PC				
LENS	150°x70°				
Operating Temperature	-10°C ~ +50°C				
Storage Temperature	-20°C ~ +40°C				
Application	Roadway, Path way, park, parking lot, Villa garden, square, residential				

NOM-ANCE CE RoHS IP66 IK10

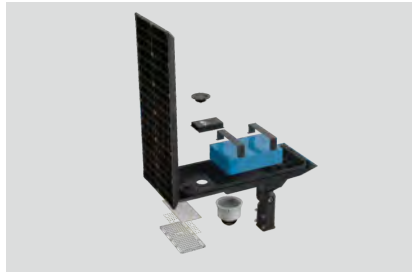


# S5 SOLAR LED STREET LIGHT

1000-12000 lm



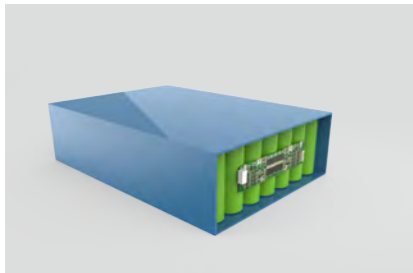
Installation angle -15° - +105 °adjustable.  
Horizontal, Vertical, wall mounted installation available.



Die cast aluminum box, tool-free access, easy to replace battery and sensor. Aluminum+ stainless steel with corrosion protection.



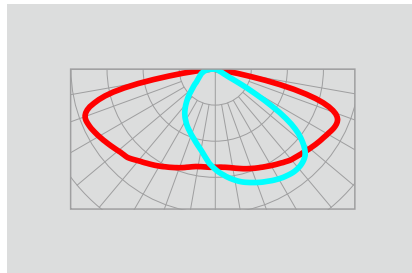
2000 cycles of full charge and full discharge.  
Theoretical lifespan of battery is 16.4 (2000\*3/365) years.



Temperature Protection System, Triplex temperature control in battery cell, battery pack and controller.



MPPT controller, 15-20% higher efficiency than PWM.



T2M+T3M batting wing light distribution, by which brightness is 20% more, and uniformity is 50% higher than last generation.

Model	20	30	40	50	60	70	80	90	100	120
Lumen	2000lm	3000 lm	4000 lm	5000 lm	6000 lm	7000 lm	8000 lm	9000 lm	10000 lm	12000 lm
Mono PV panel	36W	36W	45W	45W	67W	85W	90W	100W	110W	130W
Li(NiCoMn)O2	111Wh	178Wh	244Wh	311Wh	377Wh	422Wh	488Wh	555Wh	622Wh	755Wh
LiFePO4	115Wh	192Wh	230Wh	307Wh	384Wh	422Wh	499Wh	576Wh	614Wh	740Wh
Mono PV panel efficiency	20-23%									
Charging time	<6 hours									
Discharge time	3 days (intelligent mode, less than 200 times/day) + 4 days low brightness									
Control	Motion/PIR senor + light control +low battery level dimming									
Color Temperature	Warm white 3000K, Neural white 4000K, cold white 5000K,CRI>70									
Material	Aluminum + stainless steel + PC									
LENS	155°x70° (T2-M); 155° x70° (T3-M); bat wing; Anti-UV									
Operating Temperature	-10°C ~ +50°C									
Storage Temperature	-20°C ~ +40°C									
Application	Roadway, Path way, park, parking lot, Villa garden, square, residential									



FCC CE RoHS IP66 IK10 17 Level

## S3 SOLAR LED STREET LIGHT



With high efficiency street light, combined with optic, the average lux is 20% higher.



High quality lithium battery, matching in group under strictly requirement, lifetime is 2-3 times of lead-acid battery.



Using high quality photovoltaic panel, the transfer efficiency is more than 20%, and life time is more than 25 years.



Five time period, high precision digital constant current controller, can fulfill various lighting requirements.



Modular design of connection, easy installation, no need of buried battery and complex wiring.



Remote controller can be used to set or change the system parameter.

# Control System of Street Light

The street light control system of Dianming is developed by its own engineering team based on years experience of street lighting, aim to fulfill customer's requirement with more competitive price and more excellent performance. In this system, the user can fill the load information according to actual environment, the system will calculate automatically of the capacity of solar panel and battery. The concept of local average daily sunlight hours, make the system meet the individual needs of customers.

DIANMING SOLAR LIGHTING POWER DISTRIBUTION SYSTEM

DIANMING | SOLAR LIGHTING POWER DISTRIBUTION SYSTEM

About us

Products

LED Lamp

Load Information

System Selection

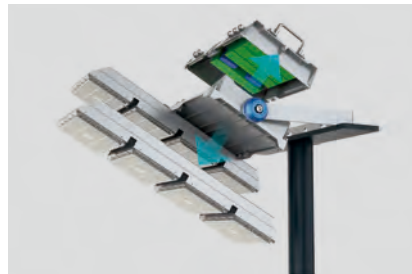
Rated Power:	30	W	PV Panel Wattage:	100	W
First Period:	1	H	Battery Capacity:	600.00	WH
Lumen Output:	50	%	12V Li(NiCoMn)O2:	54	AH/11.1V
Second Period:	4	H	12V LiFePO4:	48	AH/12.8V
Lumen Output:	100	%	24V Li(NiCoMn)O2:	28	AH/22.2V
Third Period:	5	H	24V LiFePO4:	24	AH/25.6V
Lumen Output:	30	%			
Average sunshine hours:	4	H			
Consecutive rainy days:	2	day			

SHENZHEN DIANMING TECH CO., LTD. [www.darmon.com](http://www.darmon.com)

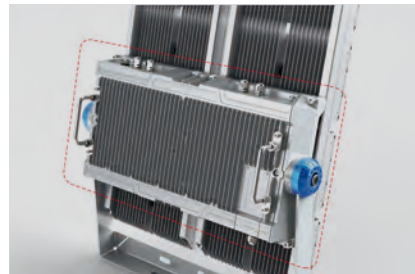




## P5 LED HIGH MAST 150-1400W



Modular design of driver box and light source, support large power-span (150W-1250W), easy for installation and maintenance, light weight but ensure effective heat dissipation.



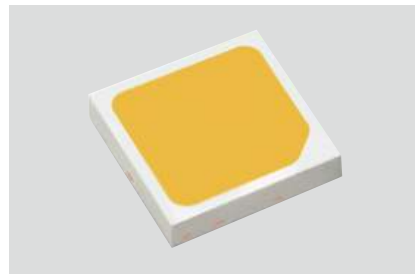
Independent driver cavity design, improved the heat dissipation and reliability, overall protection and ensure longer lifespan.



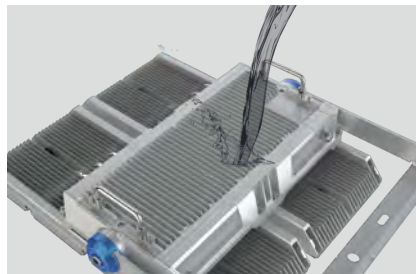
Adopt smooth fin design. The isolated suspended driver cavity and light source modules can avoid heat accumulation and improve heat dissipation efficiency.



Focus on high pole lighting with secondary photometric design, high uniformity and utilization, multi-angle light distribution options. Anti-overflow light hood design for reducing light pollution.



A new generation high brightness outdoor led, lower current drive. The whole lighting efficiency increased by about 10%, and lower light attenuation.



Integrated structure waterproof design without utilizing glue, ≥IP66, explosion-proof grade IK09, able to support 4 times of its own weight.

Power Consumption (Type A)	150W	200W	240W	300W
Instant Output Lumen	20250 lm	29000 lm	34800 lm	40500 lm
LED Quantity	176 pcs	352 pcs	352 pcs	352 pcs
Typical System Efficiency	≥135 lm/W	≥145 lm/W	≥145 lm/W	≥135 lm/W
Power Consumption (Type A)	400W	720W	960W	1200W
Instant Output Lumen	58000 lm	104400 lm	139200 lm	174000 lm
LED Quantity	528 pcs	704 pcs	1056 pcs	1408 pcs
Typical System Efficiency	≥145 lm/W	≥145 lm/W	≥145 lm/W	≥145 lm/W
Power Consumption (Type B)	600W	900W	1200W	1400W
Instant Output Lumen	81000 lm	121500 lm	162000 lm	189000 lm
LED Quantity	740 pcs	1056 pcs	1408 pcs	1760 pcs
Typical System Efficiency	≥135 lm/W			
Color	Warm White (WW)		Neutral White (NW)	
Color Temperature	3000 ± 200K		5000 ± 300K	
Typical CRI	≥70			
Beam Angle	20°x1°; 45°			
Input Voltage	100 ~ 240V AC/435V AC			
Frequency	47~63Hz			
Operating Temperature	-20℃~-+50℃			
Storage Temperature	-20℃~-+60℃			
Material	PC, Aluminum Alloy			
Lifespan	>100,000 hours			





# P4 LED HIGH MAST 240-960W



Separate module design, 240W each module integrated with driver, support 1-4 modules and fast maintenance. Hood design for option.



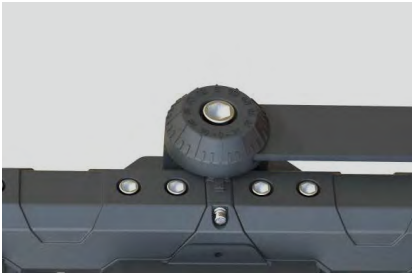
Adopt Integrated protection process combined die-casting and tempered glass, protecting from high density salt spray and other gas corrosion.



Professional light distribution with secondary optical design to meet high uniformity and utilization rate. Types of lens for improving light utilization and reduce light waste and pollution.



Equipped with independent bracket for setting the driver, better heat dissipation, and fast maintenance.



Flexible angle adjustment, interval 10 degrees.



IP67. IK09. Built-in respirator to prevent water and fog inside the lamp.

Power Consumption	240W	360W	480W	720W	960W
Instant Output Lumen(45°, 20°)	30000 lm	45000 lm	60000 lm	90000 lm	120000 lm
LED Quantity (45°, 20°)	216 pcs	288 pcs	432 pcs	648 pcs	864 pcs
Typical System Efficiency	≥125 lm/W (CREE 3030)				
Instant Output Lumen (45°, 15°)	30000 lm	45000 lm	60000 lm	90000 lm	120000 lm
LED Quantity (45°, 15°)	264 pcs	396 pcs	528 pcs	792 pcs	1056 pcs
Typical System Efficiency	≥125 lm/W (Lumileds 3030)				
Instant Output Lumen (60°, 90°)	31200 lm	/	62400 lm	93600 lm	124800 lm
LED Quantity (60°, 90°)	288 pcs	/	576 pcs	864 pcs	1052 pcs
Typical System Efficiency	≥130 lm/W (Lumileds 3030)				
Instant Output Lumen (105°, 55°)	30000 lm	/	60000 lm	90000 lm	120000 lm
LED Quantity (105°, 55°)	288 pcs	/	576 pcs	864 pcs	1052 pcs
Typical System Efficiency	≥125 lm/W (Lumileds 3030)				
Color	Warm White (WW)		Neutral White (NW)		Cool White (CW)
Color Temperature	3000 ± 200K		4000 ± 300K		5000 ± 300K
Typical CRI	≥70				
Beam Angle	20°x16°; 45°; 60°; 90°; 120°; Asymmetric				
Input Voltage	100 ~ 240V AC/435V AC				
Frequency	47~63Hz				
Operating Temperature	-20°C~+45°C				
Storage Temperature	-20°C~+60°C				
Material	PC, Aluminum Alloy, Tempered Glass				
Lifespan	>100,000 hours				



# High Mast Light Control System



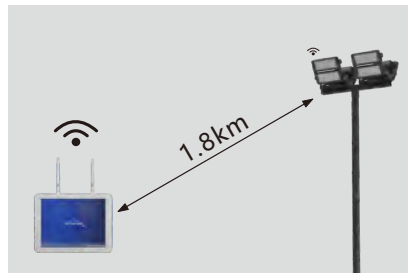
Touch- screen for main controller, easy and direct operation.



LoRa wireless control, strong anti-interference, long transmission distance.



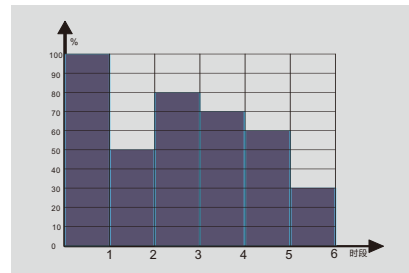
No need Internet connection, no need backstage server.



Wireless transmission distance up to 1.8km (Unobstructed)



One pole is equipped with one dimming control box, all lamps on a single pole are dimmed together.



Support 6 time period dimming control.

## Detached Driver solution

AC-DC driver is detached from the lamp in installing, which reduced the lamp weight and pole load, and enhanced lamp resistant capabilities of wind resistance. Drivers are mounted inside of the distribution cabinet together, which is easier for maintain and repair. Distribution cabinet to lamp is powered by isolated direct current, which would be safer and avoid to get electric shock.

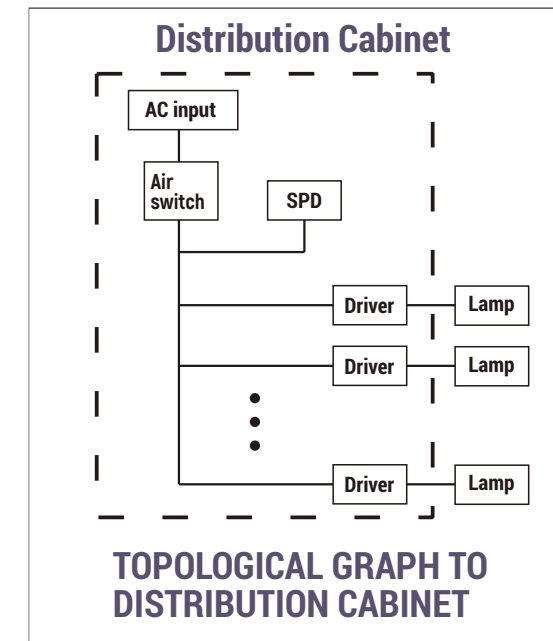


DIAGRAM DRAWING TO DISTRIBUTION CABINET



# G9 LED STREET LIGHT 20-240W



Smooth back side with toothless design, highly dust-proof and self-cleaning.



“PC lens” and “Glass + PC lens” are optional, to meet different market demands. (>40W)



Independent driver cavity, better protection for LED and driver, prevent fogging.



High expansion, support NEMA interface and various wired or wireless remote control.



A variety of light distribution for different lighting scenes.



Supports horizontal, vertical installation and adjustable angle installation.

Power Consumption	20W	30W	40W	50W	60W	75W
Instant Output Lumen	3000 lm	4500 lm	5800 lm	7000 lm	9300 lm	11250 lm
LED Quantity	96 PCS	96 PCS	96 PCS	96 PCS	160 PCS	160 PCS
Typical System Efficiency	≥150 lm/W	≥150 lm/W	≥145 lm/W	≥140 lm/W	≥155 lm/W	≥155 lm/W
Power Consumption	100W	120W	150W	180W	200W	240W
Instant Output Lumen	14500 lm	18600 lm	22500 lm	26100 lm	31000 lm	36000 lm
LED Quantity	160 PCS	320 PCS	320 PCS	320 PCS	480 PCS	480 PCS
Typical System Efficiency	≥145 lm/W	≥155 lm/W	≥150 lm/W	≥145 lm/W	≥155 lm/W	≥150 lm/W
Power Consumption (Glass)	20W	30W	40W	50W	60W	75W
Instant Output Lumen	/	/	/	7000 lm	8400 lm	10500 lm
LED Quantity	/	/	/	160 PCS	160 PCS	160 PCS
Power Consumption (Glass)	100W	120W	150W	180W	200W	240W
Instant Output Lumen	14000 lm	16800 lm	21000 lm	25200 lm	28000 lm	33600 lm
LED Quantity	320 PCS	320 PCS	320 PCS	448 PCS	448 PCS	448 PCS
Typical System Efficiency	≥140 lm/W					
Color	Warm White		Neutral White		Cool White	
Color Temperature	3000±200K		4000±300K		5000±300K	
Typical CRI	>70					
Beam Angle	160°x80°; 160°x95°					
Input Voltage	100 ~ 240V AC					
Frequency	47~63Hz					
Operating Temperature	-20°C~+50°C					
Storage Temperature	-20°C~+60°C					
Material	Alloy Aluminum, Stainless Steel, Optical PC, Glass					
Lifespan	>100,000 hours					





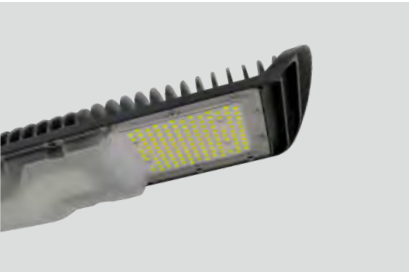
# G7 LED STREET LIGHT 20-100W



Integrated die-casting aluminum housing with beautiful appearance, compact structure and high strength.



Integrated self-cleaning design, efficient heat dissipation and low light decay.



Professional secondary optical design, support pole distance ≥4.5 times \* height of pole.



Equipped with level, easy and accurate installation.



NEMA C136.10&C136.41 interface are optional, support photocell or single lamp controller.



Arm diameter from 34, 42, 60mm.

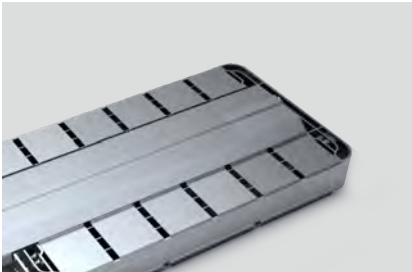
Power Consumption	20W	30W	40W	50W	60W
Instant Output Lumen	3000 lm	4500 lm	6000 lm	7500 lm	9000 lm
LED Quantity	40PCS	48PCS	64PCS	88PCS	88PCS
Typical System Efficiency	≥150 lm/W				
Power Consumption	70W	80W	90W	100W	
Instant Output Lumen	10500 lm	12000 lm	13500 lm	15000 lm	
LED Quantity	112PCS	112PCS	136PCS	136PCS	
Typical System Efficiency	≥150 lm/W				
Color	Warm White		Neutral White		Cool White
Color Temperature	3000±200K		4000±300K		5000±300K
Typical CRI	>70				
Beam Angle	155°x75°; 150°x80°				
Input Voltage	100 ~ 240V AC				
Frequency	47~63Hz				
Operating Temperature	-20°C~-+50°C				
Storage Temperature	-20°C~-+60°C				
Material	Alloy Aluminum, Stainless Steel, Optical PC				
Lifespan	>100,000 hours				



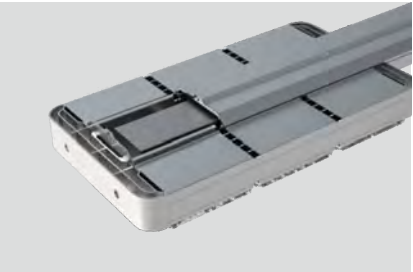
# G6 LED STREET LIGHT 50-300W



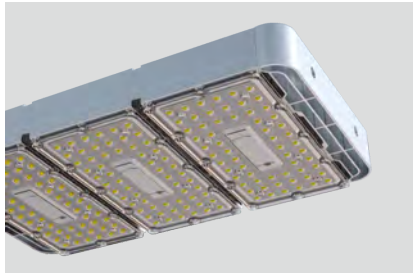
Full aluminum design, chute connection, shockproof and corrosion resistant.



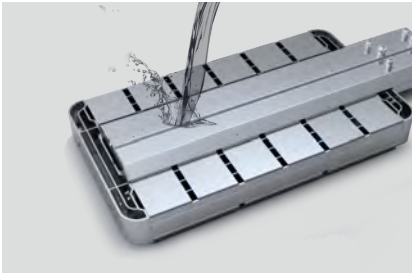
Self-cleaning design, low light failure, long lifespan.



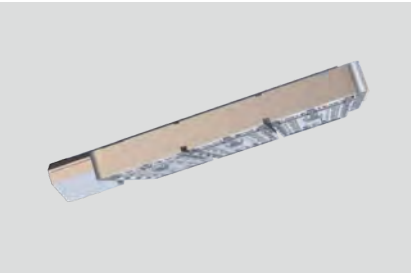
Drawer type design of the cavity for driver, easy installation, convenient maintenance.



Imported optical PC lens, accurate secondary light distribution, excellent anti-aging performance.



Heat insulation module, Independent waterproof, IP≥66.



Super slim design, thickness of whole lamp <60MM, standard height of hold hoop, low wind drag.

Power Consumption	60W	120W	180W	240W	300W
Instant Output Lumen(CREE)	8400 lm	16800 lm	25200 lm	33600 lm	42000 lm
LED Quantity(CREE)	42PCS	84PCS	126PCS	126PCS	126PCS
Instant Output Lumen(Lumileds)	8400 lm	16800 lm	25200 lm	33600 lm	42000 lm
LED Quantity(Lumileds)	60PCS	120PCS	180PCS	180PCS	180PCS
Typical System Efficiency	≥140lm/W				
Instant Output Lumen(Lumileds)	9600 lm	19200 lm	28800 lm	38400 lm	48000 lm
LED Quantity(Lumileds)	144PCS	288PCS	432PCS	576PCS	720PCS
Typical System Efficiency	≥160lm/W				
Color	Warm White		Neutral White		Cool White
Color Temperature	3000±200K		4000±300K		5000±300K
Typical CRI	≥70				
Beam Angle	150°x70°; 150°x60°; 155°x70° (T2-M); 155° x70° (T3-M)				
Input Voltage	100 ~ 240V AC				
Frequency	50 ~60Hz				
Storage Temperature	-20°C~+50°C				
Operating Temperature	-20°C~+60°C				
Material	Alloy Aluminum, Stainless Steel, Optical PC				
Lifespan	> 100,000h				





G5 LED STREET LIGHT  
30-80W



Optical lens and glass design to realize accurate light distribution and fireproofing, delay the ageing of lens to maintain luminous flux.



Die casting aluminum housing, equipped with gradienter. Opening housing without tool, independent waterproof in the cavity of power supply.



Support 90° installation, include shockproof screw. (0°±5/90°±5) adjust freely. Support (40 mm-60 mm) lamp arm.



Imported optical PC lens, accurate secondary light distribution, excellent anti-aging performance.



Built-in respirator to prevent fogging inside the lamp.



4 times of gravity test, without deformation.

Power Consumption	30W	40W	50W	60W	70W	80W
Instant Output Lumen(CREE)	3600 lm	4800 lm	6000 lm	7200 lm	8400 lm	9600 lm
LED Quantity(CREE)	36PCS	36PCS	72PCS	72PCS	72PCS	72PCS
Instant Output Lumen(Lumileds)	3600 lm	4800 lm	6000 lm	7200 lm	8400 lm	9600 lm
LED Quantity(Lumileds)	40PCS	40PCS	80PCS	80PCS	80PCS	80PCS
Typical System Efficiency	≥120 lm/W					
Color	Warm White (WW)		Neutral White (NW)		Cool White (CW)	
Color Temperature	3000±200K		4000±300K		5000±300K	
Typical CRI	>70					
Beam Angle	150°x50°(CREE); 150°x70°(Lumileds)					
Input Voltage	100 ~ 240V AC					
Frequency	47 ~ 63Hz					
Storage Temperature	-20 °C ~ +50 °C					
Operating Temperature	-20 °C ~ +80 °C					
Material	Alloy Aluminum, Stainless Steel, Tempered Glass, Optical PC					
Lifespan	> 100,000h					



LM79 IK08 IP66



# G5S LED STREET LIGHT

90-180W



Optical lens and glass design to realize accurate light distribution and fireproofing, delay the ageing of lens to maintain luminous flux.



Die casting aluminum housing, equipped with gradienter. Opening housing without tool, independent waterproof in the cavity of power supply.



Support 90° installation, include shockproof screw. (0°±5/90°±5) adjust freely. Support (40 mm-60 mm) lamp arm.



Imported optical PC lens, accurate secondary light distribution, excellent anti-aging performance.



Built-in respirator to prevent fogging inside the lamp.



4 times of gravity test, without deformation.

Power Consumption	100W	120W	150W	180W
Instant Output Lumen(CREE)	12000 lm	14400 lm	18000 lm	21600 lm
LED Quantity(CREE)	96PCS	96PCS	128PCS	168PCS
Instant Output Lumen(Lumileds)	12000 lm	14400 lm	18000 lm	
LED Quantity(Lumileds)	126PCS	126PCS	168PCS	
Typical System Efficiency	≥120 lm/W			
Instant Output Lumen(Lumileds)	14500 lm	17400 lm	21750 lm	26100 lm
LED Quantity(Lumileds)	126PCS	126PCS	168PCS	168PCS
Typical System Efficiency	≥145lm/W			
Color	Warm White (WW)	Neutral White (NW)	Cool White (CW)	
Color Temperature	3000±200K	4000±300K	5000±300K	
Typical CRI	>70			
Beam Angle	153°/84°(CREE); 155°x90°(Lumileds); 150°x75°(Lumileds)			
Input Voltage	100 ~ 240V AC			
Frequency	47 ~ 63Hz			
Storage Temperature	-20 °C ~ +50 °C			
Operating Temperature	-20 °C ~ +80 °C			
Material	Alloy Aluminum, Stainless Steel, Tempered Glass, Optical PC			
Lifespan	> 100,000h			

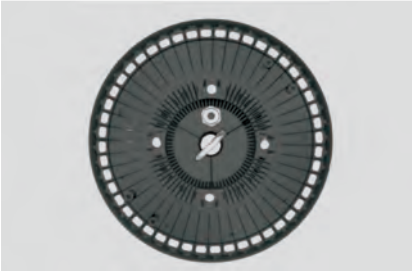


LM79 IK09 IP66

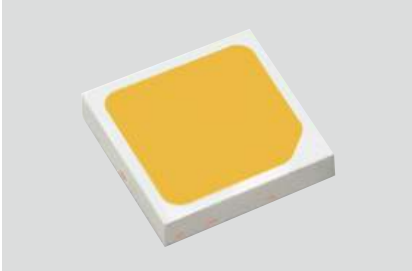




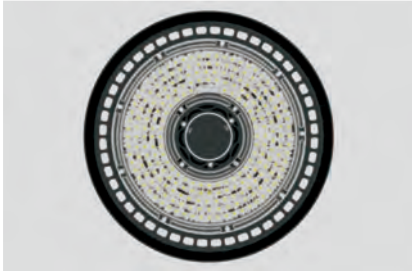
H8 LED HIGH BAY  
100-200W



Integrated die-casting process and convection heat dissipation design, higher heat dissipation efficiency and lighter weight.



Combined with an integrated lens and lower current drive, overall light efficiency increased by 10%, lower light attenuation.



Multi-angle lens light distribution optional, suitable for different scene requirements.



Support customized square driver design



Support sensor control and remote control setting.



Integrated structure waterproof design, eliminate glue for waterproof, waterproof grade ≥ IP65

Power Consumption	100W	120W	150W	180W	200W
Instant Output Lumen	1400 lm	16800 lm	21000 lm	25200 lm	28000 lm
LED Quantity (3030 Isolated)	140 pcs	210 pcs	210 pcs	280 pcs	280 pcs
LED Quantity (3030 non-isolated)	120 pcs	180 pcs	180 pcs	240 pcs	240 pcs
Typical System Efficiency	145 lm/W				
Power Consumption	100W	120W	150W	180W	200W
Instant Output Lumen	15000 lm	18600 lm	23250 lm	27900 lm	31000 lm
LED Quantity (3030 non-isolated/high light efficiency)	260 pcs	400 pcs	400 pcs	400 pcs	540 pcs
Typical System Efficiency	150 lm/W	155 lm/W			
Color	Warm White (WW)		Neutral White (NW)		Cool White (CW)
Color Temperature	3000±200K		4000±300K		5000±300K
Typical CRI	>70				
Beam Angle	100W 50°; 90°; 110°		120~150W 60°; 90°; 110°	180~200W 40°; 90°; 110°	
Input Voltage	100 ~ 240V AC				
Frequency	47 ~ 63Hz				
Storage Temperature	-30 °C ~ +45 °C				
Operating Temperature	-20 °C ~ +60 °C				
Material	PC, Aluminum Alloy				
Lifespan	> 100,000h				



# GD5 LED STREET LIGHT

## 30-80W



Non exposed heat sink, smooth back surface and free from dust.



Entire lamp body is in die-casting housing, with integrated waterproof and tool-free maintenance.



Compatible with street lights and garden lights to meet different usage scenarios.



Optical lens + tempered glass design for even light distribution and fireproofing, to delay the lens aging and to maintain luminous flux.



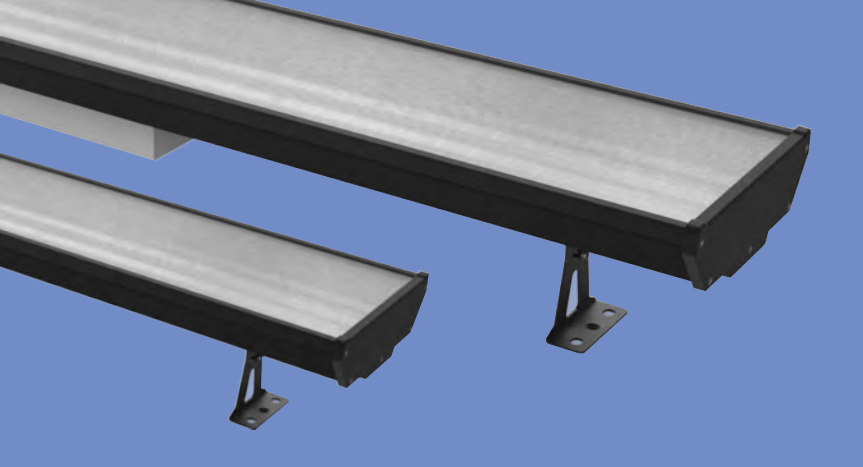
Street light mode supporting horizontal and vertical installation, supporting -30° to +30° adjusted angle.



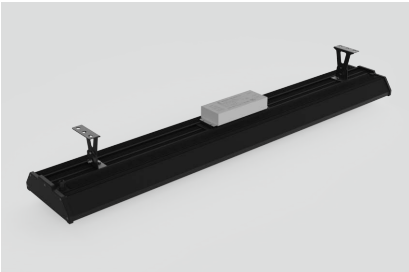
Independently lightning protection, waterproof rating ≥ IP65.

Power Consumption	30W	40W	50W
Instant Output Lumen(Lumileds)	3600 lm	4800 lm	6000 lm
LED Quantity	96PCS	96PCS	96PCS
Typical System Efficiency	≥120 lm/W		
Power Consumption	60W	70W	80W
Instant Output Lumen(Lumileds)	7200 lm	8400 lm	9600 lm
LED Quantity	96PCS	96PCS	96PCS
Typical System Efficiency	≥120 lm/W		
Color	Warm White (WW)	Neutral White (NW)	Cool White (CW)
Color Temperature	3000±200K	4000±300K	5700±300K
Typical CRI	>70		
Beam Angle	90° ; 120° ; 90°x155°(T1) ; 60°x145°(T2-M) ; 100°x60°(T3-M) ; 160°(T5-M)		
Input Voltage	100 ~ 240V AC		
Frequency	47 ~ 63Hz		
Operating Temperature	-20°C ~ +40 °C		
Storage Temperature	-20°C ~ +80 °C		
Material	Alloy Aluminum, Stainless Steel, Tempered Glass, Optical PC		
Lifespan	> 100,000h		

CE  IK08 IP66



T7 LED TUNNEL LIGHT  
20-300W



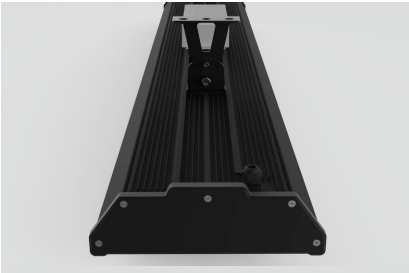
Integrated linear surface lighting design, ultra-thin die-casting end cover, support linear non-spaced lighting.



Optical-grade cloth-lined glass panel, with reflective cup for surface light distribution, high efficient and soft light output, and significantly glare reduced.



Slideway for mounting bracket can move left and right freely, and supports ±45 ° adjustable elevation. Easy for installation and maintenance.



All-aluminum design, integrated downwind fins for naturally dissipate heat, reduce light decay and ensure long lifespan.



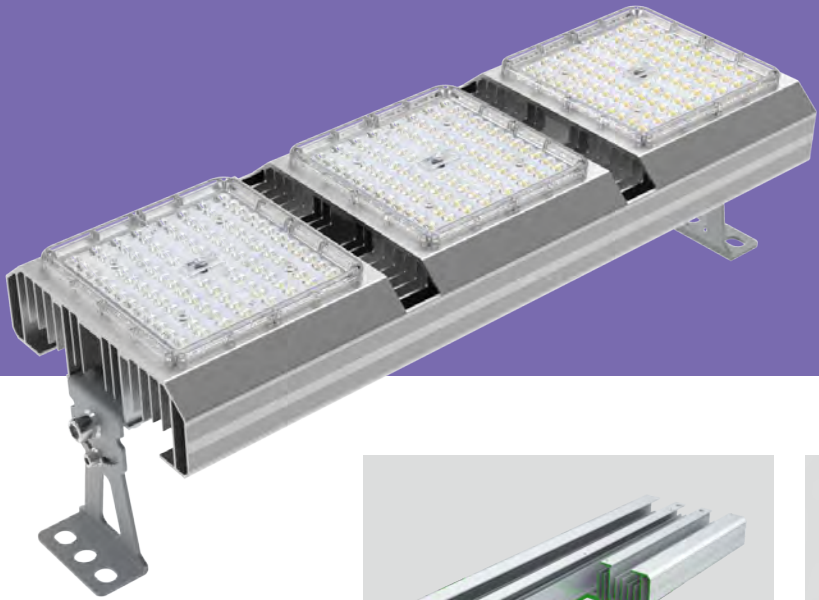
Waterproof structure and standard respirator to balance internal and external air pressure, waterproof level >IP66, prevent fogging.



Only use internationally-proven LED chip and well-known drivers to guarantee quality from the source.

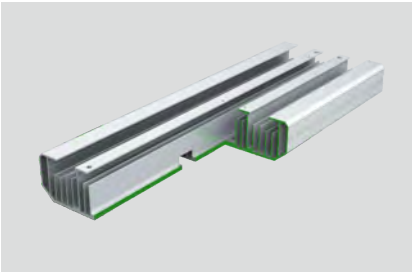
Power Consumption	20W	30W	40W	50W	60W
Instant Output Lumen	2400 lm	3600 lm	4800 lm	6000 lm	7200 lm
LED Quantity	128 PCS	128 PCS	128 PCS	128 PCS	128 PCS
Typical System Efficiency	≥120 lm/W				
Power Consumption	80W	100W	120W	150W	180W
Instant Output Lumen	9600 lm	12000 lm	14400 lm	18000 lm	21600 lm
LED Quantity	192 PCS	192 PCS	256 PCS	256 PCS	384 PCS
Typical System Efficiency	≥120 lm/W				
Power Consumption	200W	240W	270W	300W	
Instant Output Lumen(Lumileds)	24000 lm	28800 lm	32400 lm	36000 lm	
LED Quantity	384 PCS	448 PCS	448 PCS	576 PCS	
Typical System Efficiency	>120 lm/W				
Color	Warm White (WW)		Neutral White (NW)		Cool White (CW)
Color Temperature	3000±200K		4000±300K		5000±300K
Typical CRI	>70				
Beam Angle	110°x100°				
Input Voltage	100 ~ 240V AC				
Frequency	47 ~ 63Hz				
Operating Temperature	-30℃ ~ +50 ℃				
Storage Temperature	-30℃ ~ +60 ℃				
Material	Alloy Aluminum, Stainless Steel, Optical PC				
Lifespan	> 100,000h				

CE  IK08 IP66



# T6H LED TUNNEL LIGHT

## 20-300W



Patented dustproof downwind radiator design special for tunnel, high efficient heat dissipation.



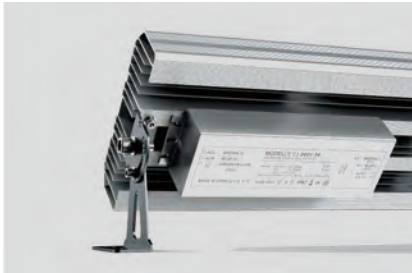
Patented anti-shock structure design. Safe and reliable structure, not directly supported by screws.



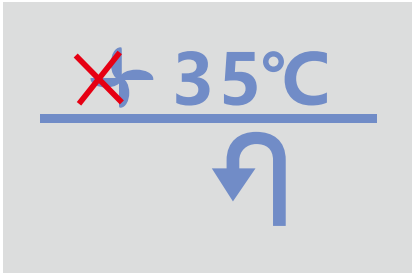
Imported optical PC lens, which has strong anti-aging performance and good light transmission.



Adjustable elevation angle of the fixture. Adjustment accuracy is ≤10 °.



Low-voltage power supply, first-class brands at home and abroad. Passed the long-term aging and severe test.



The maximum temperature of welding feet of LED is 35 ° C in no wind environment in order to meet the use in harsh areas.

Power Consumption	20W	30W	40W	50W	60W
Instant Output Lumen(Lumileds)	2800 lm	4200 lm	5600 lm	7000 lm	8400 lm
LED Quantity(Lumileds)	48 pcs	56 pcs	72 pcs	88 pcs	96 pcs
Typical System Efficiency	≥140 lm/W				
Power Consumption	80W	100W	120W	150W	180W
Instant Output Lumen(Lumileds)	11200 lm	14000 lm	16800 lm	21000 lm	25200 lm
LED Quantity(Lumileds)	128 pcs	160 pcs	176 pcs	216 pcs	264 pcs
Typical System Efficiency	≥140 lm/W				
Power Consumption	200W	240W	270W	300W	
Instant Output Lumen(Lumileds)	28000 lm	33600 lm	37800 lm	42000 lm	
LED Quantity(Lumileds)	288 pcs	352 pcs	400 pcs	440 pcs	
Typical System Efficiency	≥140 lm/W				
Color	Warm White (WW)		Neutral White (NW)		Cool White (CW)
Color Temperature	3000±300K		4000±300K		5700±300K
Typical CRI	>70				
Beam Angle	150°x70°				
Input Voltage	100 ~ 240V AC				
Frequency	47 ~ 63Hz				
Storage Temperature	-30 °C ~ +50 °C				
Operating Temperature	-30 °C ~ + 60 °C				
Material	PC, Aluminum Alloy				
Lifespan	> 100,000h				

CE  IK10 IP67



