

**TE PIRINGA HAPŪ**  
NGĀTI HINEMANŪ | NGĀI TE UPOKOIRI  
NGĀTI HONOMŌKAI | NGĀTI MAHUIKA

# TE HAU O TE KĀENGA

*'My name is Māori, we are one' – Rēnata Kawepō*

*"To everyone that have helped it has been fantastic seeing the result and I can't thank you enough, it wouldn't have been possible without your leadership – I'm blown away and eternally grateful." – Kēpa Toa (Housing Repairs Programme)*



**ISSUE 3 | MAY 2024**



# TE PIRINGA O NGĀ HAPŪ TE HAU O TE KĀENGA

community update

ISSUE 3  
MAY 2024

## Message from our Managing Director

Renata Hakiwai



Tēnā tātou katoa,  
It is a privilege that I bring you my last pānui as Managing Director. It is with great enthusiasm that we introduce our newly appointed General Manager, Meihana Watson, and Deputy General Manager, Tessa Robin, to our team. Their arrival has brought a plethora of knowledge, new energy and innovative ideas to our organisation alongside deep knowledge and experience. Whānau should be excited as we embark on the next phase of our journey with these talented individuals and of course these talented whānau members. Their introduction and aspirations in their role will be outlined further in this pānui.

Over the next 4 weeks, I will be transitioning from my current position as Managing Director of Ngāti Hinemanu, Ngāi Te Upokoiri me ōna Piringa Hapū Authority Trust (Te Piringa Hapū) and moving over to our hapū Asset Development Company in which was established in 2023 to help secure and grow future assets. This strategic move aims to ensure our sustained success in the future as we move towards Hapū Mana Motuhake.

In this current capacity in the role of Managing Director which was a finite role, my responsibilities primarily centered around change management and establishing our organisation whilst we recruited for a full time General Manager. Subsequently, I briefly assumed the Acting General Manager role until the recruitment of key leaders to steer the organisation through its forthcoming phase of consolidation.

I believe we have achieved so much as a organisation, hapū and community over the last 12 months when this role was created and I believe we have the right leaders to take us forward. By the conclusion of June, the position of Managing Director will be dissolved, with the General Manager's now reporting directly to the Board.

Over the last two months we have achieved several key milestones alongside delivering some important activities.

The Future Development Strategy (FDS) submission and spatial planning. wānanga rangatahi. Starting of infrastructure and transitional housing, completion of a further houses through our housing repairs programme, introduction of a new service to help whānau through their insurance needs. A full array of cabins which have landed and whānau are now in, Hui Taumata, establishment of the Taiao unit and staff, and induction of new staff to name a few.

Lastly, we'd like to remind whānau that we have an open-door policy at our office at Ōmahu Marae. If you have any concerns please do feel free to pop in and see one of the kaimahi, or alternatively email us at [info@piringahapu.com](mailto:info@piringahapu.com).

**Renata Hakiwai**  
**Managing Director**

**Te Piringa Hapū**



## SAVE THE DATE.

Matariki ki Ōmahu Thursday 27th June  
5pm - 8pm

# KIA HIWA RĀ! KA HIWA RĀ!



## MEIHANA WATSON | GENERAL MANAGER



Tēnā tātau e ngā uri o Ngāi Te Upokoiri, o Ngāti Hinemanu, o Ngāti Mahuika me Ngāti Honomōkai. Otirā, kei ngā pakeke kua huri ki tua o te ārai me mihi awau ki a koutou i para i te huari hei pāinga mō tātau ngā uri o te kāenga. Tīhei Mauri Ora.

*Ko koe kei tēnā kīwai, ko au kei tēnei kīwai o te kete.*

My name is Meihana Watson, and it is a privilege for me to be appointed as General Manager of Te Piringa Hapū on behalf of all uri across our takiwā. Thank you to those who have led and supported Te Piringa Hapū since Cyclone Gabrielle devastated our community. However, with the devastation, opportunities for our community and whānau have occurred.

My core purpose as General Manager is to lead and manage the organisation to achieve the goals set out by you, the hapū. I am also responsible for guiding the Board of Trustees on the optimal allocation of resources to support the Hapū's strategic vision and, notably, the implementation of the Utaina 10-Year Recovery Plan.

## TESSA ROBIN | DEPUTY GENERAL MANAGER

Tēnā koutou katoa,

He aha te mea nui? Ko tōku whānau, āku iwi, āku hapū, ko koutou mā.

I te taha o tōku māmā ko Ngāti Rehia, Ngāti Kawau, Ngāti Kura ngā hapū. Ko Ngāti Kahu ki Whaingaroa me Ngāpuhi nui tonu ngā iwi.

I te taha o tōku pāpā, e tātai atu ki ngā iwi o Ngāti Maniapoto, Ngāti Raukawa, Tuwharetoa, Ngāti Pāhauwera me Ngāti Kahungunu. He mokopuna tēnei o ngā hapū e whā o Te Piringa o ngā hapū, ko Ngāti Hinemanu, Ngāi Te Upokoiri, Ngāti Honomokai me Ngāti Mahuika ēra.

Ko Tessa Robin tōku ingoa. Ko ahau tētahi o ngā kaimahi hou o Te Piringa Hapū. Ko ahau tō hāwini. Kei konei ahau hei manaaki i a koutou. Nōku te hōnora ki te whakauru mai ki tēnei umanga mīharo.

Nō reira, e mihi kau atu ki a koutou katoa.

My secondary purpose is to nurture relationships with identified stakeholders, ensuring appropriate support, communications, and relationships are developed as required and tailored to the organisation's needs. While dedicating myself to serving you the Hapū and its priorities, I'm also dedicated to the growth and safeguarding of Te Piringa Hapū for the prosperity of our future generations.

Previously, serving as a public servant for Te Puni Kōkiri (Ministry of Māori Development) as a Senior Advisor based in the Takitimu office, I had been involved in supporting our marae and whānau in the region through:

- Oranga Marae – a programme of support, advice and investment for Marae.
- Kāinga Rua – a programme of support, advice and investment for marae community resilience
- Paiheretia te Muka Tāngata – relationship manager for a programme about improving outcomes for whānau Māori, supporting intergenerational wellbeing, reducing reoffending, victimisation, and imprisonment.
- Cyclone Recovery – supporting marae that were affected by Cyclone Gabrielle.

I have also been fortunate to serve as chairperson of the Ōmahu Marae Trustees since 2009, when I was a tender young 26-year-old –current. This position has provided me with insights and knowledge of the landscape changes within our community and here on the marae.

*Ehara taku toa i te toa taki tahi, engari taku toa he toa taki tini*



I am thrilled to join the team at Te Piringa Hapū, and especially excited to support the hāpori me ngā marae e toru, me ōna hapū. I come from a whānau with a history of serving my people. That is something that was instilled within me going as far back as the stories I was raised with by my tūpuna. I have a long working background within the kaupapa Māori health and social services sector having served our whānau across the rohe. Prior to that I spent many years in Public Service. My passion is my whānau, music and whakapapa. I love to learn new things and extend my knowledge. In my free time, you can find me playing with my kuri or singing with my tama. I also love to travel to maintain my whakapapa connections or to bathe in the sunshine of our pacific islands.

I am looking forward to getting involved and contributing to our hapū. Please don't hesitate to say hello if you see me around, and feel free to reach out if you'd like to chat or need a helping hand.

Kia hiwa ra!  
Tessa Robin

# RECOVERY LEAD.

NEALA ROSANDICH

## FDS SUBMISSION

Te Piringa Hapū extends a heartfelt thank you to all the whānau and hapū members who attended the wānanga and shared their valuable whakaaro regarding the Te Piringa Hapū Future Development Strategy and Spatial Plan. Your insights and feedback have been instrumental in shaping these documents, which aim to guide the future development of our community.

The input we received from each of you has been invaluable, and we deeply appreciate the time and effort you took to contribute to this important process. Your perspectives have ensured that our plans reflect the needs and aspirations of our people.

As we move towards finalising these documents, we will have a dedicated space at the upcoming Te Piringa Hapū Matariki event. This will provide another opportunity for the community to share any final thoughts and feedback before we finalise these documents. We encourage everyone to come forward and share their whakaaro, as your input remains crucial to the success and authenticity of our strategy. Together, we are shaping a future that honours our heritage and looks forward to sustainable growth and development for the community.

Aku mihi,  
Neala

## WELFARE TEAM CONTACT DETAILS



**Tia Hokianga**  
Kaiārahi Lead  
Community  
Navigator Lead

[Tia@piringahapu.com](mailto:Tia@piringahapu.com)



**Sage Mihaka**  
Kaiārahi  
Community  
Navigator

[Sage@piringahapu.com](mailto:Sage@piringahapu.com)



**Chad Puna**  
Kaiārahi  
Community  
Navigator

[Chad@piringahapu.com](mailto:Chad@piringahapu.com)

Kaiārahi/Community Navigators provide support and pastoral care to whānau who have been impacted by Cyclone Gabrielle within the Ōmahu and surrounding communities. Kaiārahi/Community Navigators support individuals and whānau by linking them to integrated internal and external wrap-around services.

**POU TANGATA.**  
**WELFARE & HOUSING**

### Rangatahi Programme Mau Rākau

We were honored and privileged to have Mania Heperi as the facilitator for our Mau Rākau wānanga for our rangatahi. The turnout was remarkable, with over 40 rangatahi attending each week.

Witnessing the mixed age groups of our tamariki/rangatahi participating in each wānanga was truly inspiring. Stay tuned, as we aim to organize more of these Mau Rākau wānanga for our whānau in the near future.



### Financial Literacy Programme

We were privileged to have Diana from ASB lead a Financial Literacy program for our rangatahi. The topics covered included Everyday Money Tips, Savings Savvy, KiwiSaver, and distinguishing between Good Debt and Bad Debt. There was a high level of engagement and interest among our rangatahi during these sessions.

#### Feedback received from participants included:

- "Aunty Tia, can we have another session like this? I'd like to bring my boyfriend along."
  - "Aunty, will there be a similar session for our pakeke?"
- "This was an amazing experience; thank you for encouraging my attendance."

## Hinetītama Rongoā Wānanga

We welcomed Gabrielle Kupa who travelled down from Kaiwaka to facilitate our Rongoā wānanga. What an amazing opportunity this was for our wahine! From creating a rongoā journal, to receiving the

historical kōrero around rongoā, and being able to make a hot-infused kawakawa oil and so much more.

The wahine were hugely grateful and appreciative for these learnings.



# Kia Ora

My health begins with me

## 7 WEEK PROGRAMME

The Kia Ora Programme is a **FREE 7-WEEK COURSE** that aims to empower whānau to better understand their health conditions so that they can live life to the fullest!

**PARTICIPANTS MEET 2.5 HOURS A WEEK OVER 7 WEEKS**

**FOR MORE INFORMATION ON THIS LOCAL ŌMAHU MARAE WORKSHOP PLEASE CONTACT CHARLES 06 871 5646**

XXXX

## Sit & Fit

Every fortnight on Tuesdays at 10 a.m. (the upcoming session being on June 11th), an enjoyable and gentle "sit and fit" exercise class is offered for kaumātua, pakeke, and anyone interested in engaging in light, low-intensity exercises to promote physical movement.



## Holiday Program

We had a blast during our 3-day tamariki programme last holidays! We whisked our little ones off to Chipmunks in Napier where they unleashed their inner wild child on the play equipment. Then, off to Velocity Entertainment/Flip Out for some heart-pounding jumps, Laser Tag battles, and a gaming frenzy. The kids were racking up those prize coupons like pros!

Back at the marae, we dove into dodgeball, cupcake artistry, crafts, and more fun galore. Our grand finale? Chilling at Cornwall Park in Hastings.

A big shoutout to our Waka Ama teams Ruamano Pink and Ruamano Blue who ran activities for our kids. Our fabulous Bus Driver extraordinaire, Kahurangi Waapu, and our awesome helpers Annette-Marie Staples, Kristin Yoldash, and Apache Hanara-Ngāheue. Stay tuned - we've got more kid-friendly adventures up our sleeves for the next holiday break!



## Equipment/tools available for whānau

We have the following list of equipment/tools accessible for the community's utilization. For any inquiries or assistance, kindly reach out to a navigator or visit the tari during office hours.

- Spades
- Rakes
- Brooms
- Waterblasters
- Shovels
- Forks
- Wheelbarrows
- Leaf rakes

## FIREWOOD

We'd like to acknowledge Tamatea Pōkai Whenua Trust and Fulton Hogan for their generous contribution of firewood logs that helped keep our whānau warm last year and continues to help this year. We have been facilitating the distribution of firewood to our community which is no easy task - thanks to all of the team who have helped make this possible. A special acknowledgment is reserved for Bruce Teao for his valuable assistance in ringing the logs ready for splitting by the team.

# HOUSING NEWS.

## CONTACT OUR HOUSING LEADERS

**Conway: Housing Manager**  
[Conway@piringaHapū.com](mailto:Conway@piringaHapū.com)

**Koriana: Housing Coordinator**  
[Koriana@piringaHapū.com](mailto:Koriana@piringaHapū.com)

## Housing Repairs Programme

### Kepa Toa

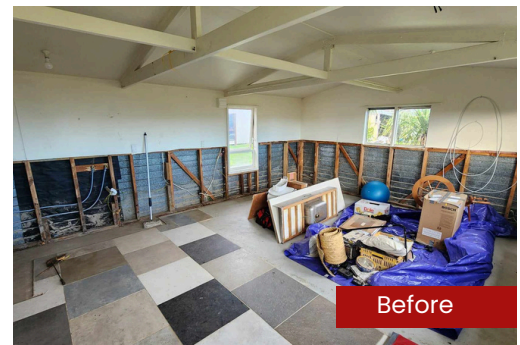
Cyclone Gabriel made landfall in our hapū on February 14, 2023, the aftermath saw 153 homes affected, leading to an 80% displacement rate among our whānau. We at Te Piringa Hapū have been honored to stand in a capacity and capability where we have been able to help some of our whānau with the repairing of their homes as part of our 'Housing Repairs Programme'. This is one of those stories.

Eight years ago, Kepa and Claire decided to relocate from their residence on Shakespeare Road back to their whānau homestead, previously inhabited by his mother, Haromi Hakiwai. The former vegetable shop, once operated by Kepa's mother, was transformed into their home, with their daughter Sharlene residing in the main dwelling on the property. When the floodwaters struck on February 14, 2023, Kepa and Claire, were forced to evacuate, leading to their temporary relocation.

Due to the proximity of the whare to the stop banks at the time of flooding, it resulted in the whare requiring full repair. Special recognition is due to the teams at J&T Carpentry, Activate Electrical, Wish Plumbing, Clever Home Solutions, and Te Haro o te Kahu Property Maintenance for their dedicated work on the restoration. Additionally, we express our gratitude to David Letele of BBM Motivation for generously donating the whiteware appliances that we installed in the whare.

On May 24th, our team, alongside Reverend Zhane Tahau Whelan, gathered at the property to welcome Kepa and Claire back home after 466 days of displacement. Kepa expressed his deep appreciation, stating, "To everyone that have helped it has been fantastic seeing the result and I can't thank you enough, it wouldn't have been possible without your leadership – I'm blown away and eternally grateful." Claire added on, "Thank you to everyone involved, to everyone who have done their part, big and small, we are very grateful and appreciate the hard work it has taken."

We extend our mihi and blessings to Kepa and Claire as they return home and feel privileged to have been a part of the process.



## Housing Repairs Programme

### RIORDAN & TINA KEMP

Riordan and Tina's whare were one of our homes in Ōmahu that was affected by flooding. Following an assessment by council, their home received a yellow sticker and subsequently they became displaced.

Te Piringa Hapū started full repairs on their whare last year and we are pleased to announce that the whānau moved back into their whare over the King's Birthday weekend.

In light of this, they express their gratitude to Te Piringa Hapū and all the tradespeople involved in restoring their home. The cyclone presented a challenging period, and they're very happy that they can now move back into their warm whare.



## How the cabins have helped our whānau



### Cabins & Transportable Homes

In partnership with Ngāti Kahungunu Iwi Incorporated (NKII), we have secured serviced & non-serviced cabins to be placed on whānau whenua to help our whānau return home while their own homes are still

undergoing repairs. This initiative aims to provide temporary accommodation for our whānau, ensuring their well-being and a smooth transition during the repair process.

### Hepera Tupe

Before the floods, Hepera, along with her mother and brother, resided at their family home on Korokipo Road. However, the flood led to their displacement, so the whānau had been temporarily staying at whānau residences since.

In November, a turning point occurred when their 1-bedroom self-contained cabin was delivered and installed, enabling Hepera to return back to their whenua in the cabin. Subsequently, after five months, their primary residence was repaired, allowing Hepera's mother to return back home as well as her brother.

The family plans to make a long-term investment in the cabin with the rent to own scheme.

Their journey, marked by trials and triumphs, has taught them the value of resilience, adaptability, and the unwavering support of loved ones. As they look toward the future, the whānau remains hopeful and determined, ready to face whatever comes their way with the same spirit and strength that has carried them through the flood.

### CONTACT OUR HOUSING LEADERS

**Conway: Housing Manager**  
[Conway@piringahapu.com](mailto:Conway@piringahapu.com)

**Koriana: Housing Coordinator**  
[Koriana@piringahapu.com](mailto:Koriana@piringahapu.com)

**ALTERNATIVELY, WE  
RECOMMEND THAT  
YOU COME SEE THE  
TEAM IN THE OFFICE  
FROM MON - FRI  
9AM TO 5PM**

## DO YOU NEED HELP WITH YOUR INSURANCE CLAIM?

### HOUSING INSURANCE NAVIGATOR

P E R R Y H A N A R A

- ✦ ADVOCACY AND SUPPORT IN PROCESSING INSURANCE CLAIMS.
- ✦ ENSURING WHĀNAU UNDERSTAND THEIR RIGHTS AND RECEIVE THE SUPPORT THEY NEED DURING THIS CHALLENGING TIME.

**ENQUIRE NOW** -----

☎ 021 853 804

🌐 [www.Piringahapu.com](http://www.Piringahapu.com)

✉ [Perry@piringahapu.com](mailto:Perry@piringahapu.com)

📍 1857 Korokipo Road, Fernhill 4175





# TRANSITIONAL HOUSING PROJECT.

## Hapū-led, Government enabled

In collaboration with Ngāti Kahungunu Iwi Incorporated, we are constructing 11 whare as transitional homes. These homes are intended to provide temporary housing for our whānau who were affected by flooding and are still awaiting repairs to their homes.

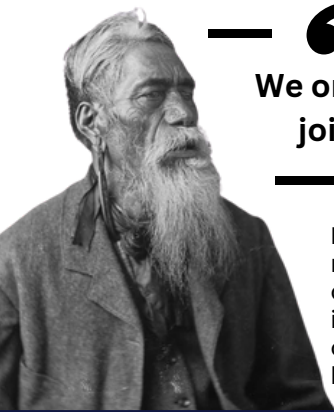


## PROGRESS

The TW Group is currently on track to complete their work. The first of the 11 whare started arriving on-site on June 10th.

Our welfare team are working with Temporary Accommodation Services (TAS) to identify whānau to move into the whare once the construction phase is complete and the Hasting District Council has issued Code Compliance Certificates for the project.





“ We once lived separately but now we have joined together for a common cause. ”

Let us commemorate Rēnata Kawepō's visionary message that emphasises the significance of unity and collective action. Central to his message is the imperative for us to unite in the pursuit of revitalizing our communities and fostering the prosperity of our hapū as well as be a light for all.

## TE KUPU A RĒNATA – TE KŌTAHITANGA

# POU TIKANGA CULTURE & IDENTITY

### CONTACT OUR POU TIKANGA TEAM

Zhane: [zhane@piringahapu.com](mailto:zhane@piringahapu.com)

Maora: [maora@piringahapu.com](mailto:maora@piringahapu.com)

John: [john@piringahapu.com](mailto:john@piringahapu.com)

Cobham: [cobham@piringahapu.com](mailto:cobham@piringahapu.com)



**Zhane Tahau Whelan**

MANAGER  
POU TIKANGA



**Cobham Burns**

RESEARCH  
ASSISTANT



**Maora White**

PROJECT  
CO-ORDINATOR

## OUR TEAM



**JOHN MATTHEWS**  
RESEARCH LEAD

## NEW KAIMAHI KO KAHUKURANUI E TŪ NEI!

It is with great pleasure that we announce the addition of John Matthews to our Pou Tikanga team in the capacity of Research Lead. Papa John also co-leads Te Paepae o Kahukuranui alongside his makau, Nanny Keita Tuhi. His primary focus will be spearheading our research initiatives, enriching our mātauranga-ā-hapū, and facilitating wānanga sessions to disseminate this knowledge within the broader hapū community. We are truly fortunate to have John to contribute his expertise and talents to the Pou Tikanga team.

## RĒNATA KAWEPŌ WEEKEND

A year following Rēnata's passing, rangatira from across the motu gathered to honour Rēnata as a paramount chief devoted to the flourishing of Te iwi Māori. Over a century ago, under the leadership of The Hon. Sir Timi Kara, these leaders designated the 14th of April as a sacred day to remember the accomplishments and life of our Ariki Rēnata, known as a saint and Paramount Chief.

This year we had a magnificent celebration for Rēnata Kawepō.

On the 13th of April the weekend commenced with a karakia breakfast, followed by a pop-up marketplace where stallholders were able to sell hot kai, baking, crafts, clothing and more. A wānanga dedicated to Rēnata Kawepō took place simultaneously with presentations and kaikōrero on the life of Rēnata Kawepō and a focus on hapū unity and flourishing. The next day we travelled to all 3 of our marae with a special hīkoi.



## RĒNATA KAWEPŌ WĀNANGA

The Rēnata Kawepō wānanga provided an invaluable opportunity for our uri to reconnect with the life and teachings of Rēnata and immerse themselves in the whakapapa and taonga tuku iho of our hapū.

Through a series of kauhau, attendees were able to gain a deeper understanding of the customs, values, and practices that have been passed down through generations and Rēnata's hope for our hapū

Led by esteemed members of Te Rau o Te Huia, including Dr. Joseph Te Rito, Pareputiputi Nuku, Brian Morris, and Ngahiriwa Tai Tin, with additional insights from Jerry Hapuku and Bayden Barber.

## RĒNATA KAWEPŌ HIKOI

On Sunday our hapū walked 5.6km's of our whenua, connecting with each of our marae starting at Rūnanga Marae, before travelling to Te Āwhina and then onto Ōmahu for karakia.

Each stop along the way Te Paepae o Kahukuranui brought to life beautifully the tikanga of our tīpuna, with pōwhiri, waiata, kōrero, karanga creating the space for our urī to engage with each of their marae in the fullness of our identity.



## HUI TAUMATA TO ACTION MĀORI UNITY



On the 31st of May 2024, a historical event unfolded as our hapū and marae of Ōmahu hosted the Hui Taumata, a national gathering for Te Iwi Māori. Over 3000 individuals representing various hapū and iwi from across the motu convened alongside mana rangatira such as Kiingi Tūhetia, Tā Tipene O'Reagan, Manuao Te Kohamutunga, and Sir Bob Gillies to engage in the wānanga on the implementation of National Māori Unity.

This event saw our marae and hapū live into our whakapapa and the tikanga of our tīpuna, this was the first time in over 1 hundred years that we hosted a Hui-ā-Motu. A massive thank you to all those involved in making this event so successful, those serving in our community, those upholding and sharing our aroha and manaakitanga in Kahukuranui and in Ruatapuwhine.

The Hui Taumata ki Ōmahu without a doubt transcended being a mere hui; it stood as a transformative moment in the pursuit of unity and tino rangatiratanga for Te Iwi Māori. This hui was one of 2 Hui-ā-motu that have taken place this year, the next will be down in Ngāi Tahu.

## ARCHIVING MĀTAURANGA-Ā-HAPŪ

Our team has been working hard to safeguard our mātauranga Māori, whakapapa, and oral traditions promptly by archiving and gathering our mātauranga for the purpose of preserving them for future generations.

Although we are still in the early stages of setting up our archive, we welcome urī to get in touch with us if you would like help with an aspect of researching whakapapa, tikanga or our mātauranga.

## UPCOMING WĀNANGA

Te Wānanga o Kahukuranui is set to kick off this year with 3 wānanga on Te Reo and Tikanga of our kāenga. We will be putting out information and registrations for these wānanga in the coming few weeks.

## SHARE YOUR MEMORIES

As a part of preserving our tribal memory we welcome urī to get in touch with us if you would like to contribute a kōrero to our archiving project. We are currently working through and getting in touch with our kaumatua, but welcome all.

**Te Ahikō: Research & Archives**

- Archiving and collecting of Mātauranga-ā-hapū.
- Hapū Research Unit.
- Production of Mātauranga-ā-hapū resources.
- Whare Taonga | Marsden Fund

**Te Wānanga o Kahukuranui**

- A tribal and fully immersive form of teaching and education in our mātauranga-ā-hapū, reo, tikanga and kawa
- Te Reo and Tikanga Revitalization Strategy

**Te Maara o Rēnata**

- Opportunities for the gathering of the Hapū.
- Spiritual and Cultural Wellbeing
- Building the vision of Rēnata Kawepō for a community of aroha, manaakitanga and auahatanga.

**PŌ MŌTEATEA  
EVERY MONDAY  
NIGHT 6PM KI  
ŌMAHU MARAE**

**WHAREKARAKIA & URUPĀ**

Since February 14th, there has been ongoing effort focused on recovering and restoring our wharekarakia and urupā. We are pleased to announce that after an extensive process with the insurance provider, that insurance has been approved and we are going to work with the hāhi to see the wharekarakia, memorial wall and urupā restored or repaired.

The wharekarakia was however significantly underinsured so we will look to fundraising in the near future once critical repairs are completed.



In the lead up to the Hui Taumata, we hosted a cleaning working bee for our urupā. This mahi will continue.

If you have any pātai about the urupā, please get in touch with our team.



**HAPŪ ATLAS: PĀ SITE HIGHLIGHT**

Cobham Burns leads our project to create a Hapū Atlas with over 100 identified significant sites mapped. GIS mapping and research are ongoing to document the rich history and mātauranga of each site. With this atlas plans include marking the sites with Pou and sharing this knowledge through wānanga to engage our hapū in the near future.

**OUEROA | TE PĀ O TE RANGITAUMAHA**

This edition of the newsletter we are going to highlight one of our most significant pā sites with is Oueroa. Often known as the cradle of civilization, it was the home of our tīpuna Te Rangitaumaha and his children, it is noted as being one of the most significant pā sites of Heretaunga.



Te Rangitaumaha, the son of Taraia, lived at Oueroa Pā, nestled in the Paherumanihi hills above the kumara pits on the hill flats, known as Ngaruaorangitaumaha. At the peak of Oueroa, with a view of Lake Rotokare, Rangitaumaha and his wife Hineiao brought up eight children.

Oueroa is where Hineiao wed Taraia I's son Rangitaumaha, and where his children of the emerging nobility were born. These children are where all the aristocratic lines of Heretaunga descend.

Te Huhuti, the eldest child, married Whatuiāpiti and was the mother of Hikawera II, who later reclaimed his mother's legacy and became the tīpuna of the Waiohiki people. Te Huhuti and Te Whatuiāpiti's eldest son Te Wawahanga is the grandfather of Te Upokoiri, where us of Ngāi Te Upokoiri descend from.

Taraia II is the tīpuna of the Ōmahu marae community. Descendants of Taraia II include Ngāi Te Upokoiri, Ngāti Honomōkai, Ngāti Hinemanu, and Ngāti Mahuika.

Hikateko is the tīpuna of Moteo marae and Wharerangi marae, with the subgroups Ngāti Hinepare, Ngāti Mahu, and Ngāti Tawhao tracing their roots back to Hikateko. All these lineages originated from Oueroa.

**CULTURAL IMPACT |  
VALUES ASSESSMENT**

Our Pou Tikanga research team has also been working together with our Pou Taiao team to produce cultural impact assessments. These reports are done for us to provide feedback and recommendation on the recovery rebuild in our hapū takiwā.

# POU TAIAO.

## HOW TO CONTACT

Patricia Nuku | Sustainability Lead

EMAIL: [Patricia@piringahapu.com](mailto:Patricia@piringahapu.com)

## Upcoming Wānanga

On the **27th of June** we are welcoming the Samoan commissioner who is eager to learn about:

- How communities prepare and respond to emergencies.
- How indigenous knowledge and ways of doing things can be shared and practiced.
- How online communications could play a role in the above, and to help connectivity in general.

We welcome anyone wanting to attend and speak about their experiences or have anything to share.

## Owhaoko Cultural Monitoring

The Ngā Pou Mataara cultural monitoring workshops have commenced for the Ngaruroro River, with 20 registered whānau members participating. These workshops integrate both cultural and Western methodologies. Our first wānanga involved monitoring activities at Māori Point and Ohiwia Stream, and sharing whakapapa kōrero at Ōwhiti Pa. We utilized a SHMAK kit and assessed the mauri based on our feelings upon arrival, the current state of the area, its historical

appearance, and what needs to be done to restore it. The whakapapa of each area was also included in our discussions. During our second wānanga, we visited Owhaoko Lodge. For many attendees, it was their first time experiencing the whenua and the awa. The mauri was strongly felt by everyone as we monitored the river, which was crystal clear, clean, cold, and teeming with life. The whānau are thoroughly enjoying the wānanga experience.



## Research Haerenga

On June 12th, the Pou Tikanga and Pou Taiao teams traveled to Wellington for a two-day research trip focused on the Ngaruroro River.

This research is part of a Cultural Values Assessment being prepared for the Hawke's Bay Regional Council.

In the aftermath of Cyclone Gabrielle, there is a high priority on flood mitigation measures, including widening the river, restoring wetlands, and strengthening stopbanks. Our assessment will integrate these efforts with our cultural values and significance as Tangata Whenua.

Additionally, our research builds on generations of scientific studies and traditional mātauranga. By combining historical and contemporary research, we aim to create a comprehensive understanding that honors both cultural and scientific perspectives.



## 100 day Plan

**Pou Taiao 100 day plan** will focus on Establishing:

- A Consent Process and Framework with Tamatea Pōkai Whenua (TPW) in regard to the Resource Management Act (RMA) process.
- MABX Māori land trusts who are looking to build skills & knowledge, highlight opportunities to make whenua more productive, create jobs & improve land management practices.
- Establishment of hapū Taiao Advisory Group.
- Cultural Impact Assessment (CIA) – Kereru, Whanawhana, Matapiro, Ohiti, Ohiwia & the Fernhill stopbank.
- Water Conservation Order (WCO) process
- Cultural Values Assessment (CVA) Ngaruroro Awa
- Between the Two Rivers (B2R) Contracts
- Future development strategy
- Hazard Management and Risk Plan
- Hapū Resilience Strategy
- Climate Adaptation Strategy
- Awa monitoring



## Aims & Aspirations

We are deeply committed to the preservation and enhancement of our taiao, the natural environment that sustains and enriches our wellbeing. Our aims and aspirations are rooted in our cultural heritage, & traditional mātauranga.

Aims:

Restoration and Protection of Natural Resources:

- Restore degraded ecosystems and protect existing natural habitats, ensuring the sustainability of our waterways, flora Fauna, and wetlands.
- Implement both traditional ecological mātauranga and contemporary scientific methods to monitor and manage our natural resources.

Sustainable Practices:

- Promote and practice sustainable land use, agriculture, and resource management that align with our cultural values and environmental ethics.
- Encourage the use of renewable energy sources and eco-friendly technologies within our communities.

Cultural Integration in Environmental Management:

- Ensure that our cultural values and practices are integrated into environmental policies and management plans at all levels.
- Advocate for the inclusion of Tangata Whenua perspectives in regional and national environmental decision-making processes.

Education and Awareness:

- Provide educational programs and resources to our whānau, especially our rangatahi, to foster a deep understanding and respect for our taiao.
- Raise awareness about environmental issues and the importance of cultural heritage in environmental conservation.

### Aspirations:

Healthy Ecosystems:

- Aspire to see our rivers, lakes, and wetlands teeming with life, clean and healthy, reflecting the mauri of the land.
- Work towards the re-establishment of native flora and fauna, restoring the biodiversity that once flourished in our rohe.

Resilient Communities:

- Develop resilient and adaptive communities capable of responding to environmental challenges such as climate change, natural disasters, and resource depletion.
- Strengthen our hapū capacity to manage and protect our taiao through training, resources, and community engagement.

Intergenerational Mātauranga Transfer:

- Ensure the transfer of traditional Mātauranga and Taiao practices from our tipuna to future generations, preserving our cultural heritage.
- Create opportunities for our Rangatahi to engage with their Taiao.

Collaborative Partnerships:

- Foster partnerships with government agencies, academic institutions, and other stakeholders to support our environmental goals.

# UTAINA 10 YEAR RECOVERY PLAN



AVAILABLE TO  
DOWNLOAD  
AND BROWSE  
FROM OUR  
WEBSITE  
PIRINGAHAPU.  
COM





**TE PIRINGA HAPŪ**  
NGĀTI HINEMANU | NGĀI TE UPOKOIRI  
NGĀTI HONOMŌKAI | NGĀTI MAHUIKA