

**TE PIRINGA HAPŪ**

NGĀTI HINEMANU | NGĀI TE UPOKOIRI  
NGĀTI HONOMŌKAI | NGĀTI MAHUIKA

# TE HAU O TE KAENGA

*'My name is Māori, we are one' – Rēnata Kawepō*



**ISSUE 2 | MARCH 2024**



# TE PIRINGA O NGĀ HAPŪ TE HAU O TE KAENGA

community update

## Message from our Acting GM & Managing Director

*Renata Hakiwai*



### **Tēna tātou katoa**

Welcome to issue 2 of our bi-monthly pānui 'Te Hau o Te Kaenga'. Since our last pānui we have continued to work diligently towards the implementation and delivery of our Utaina 10-year recovery plan. A significant milestone includes the addition of Patricia Nuku as our Taiao and Sustainability Lead, and Neala Rosandich as our Recovery Lead. Their expertise and dedication are invaluable assets to our team, greatly enhancing our collaborative efforts towards recovery.

The execution of our recovery plan remains a top priority. Progress has been made on nearly all objectives outlined in our Utaina 10-year recovery plan, spanning Pou Tangata, Pou Tikanga, Pou Ohanga, and Pou Taiao.

While we may not be able to satisfy everyone, our team is dedicated and does their best to meet the needs of our whānau. In the next quarter we are excited to announce further housing initiatives we will be launching such as assistance for our underinsured and insured whānau in areas of their house that their coverage hasn't quite reached.

On Saturday 9th March our hapū gathered for a 'Special Hui-a-Hapū' called to present the Transitional Papakainga and Kaumatua Housing Project. This project, initially addressing the immediate housing needs of families affected by flooding, and subsequently focusing on establishing sustainable, secure housing for our Kaumatua in the long term, deeply resonated with those in attendance.

Our ariki Rēnata Kawepō too harbored a vision towards the development of a papakainga. His desires for our hapū were for whenua to be set apart for a wharetīpuna, wharekai and also the building of a "Papakāinga" for whānau residences. As the sun set on the hui, there was a reaffirmation of support expressed during the gathering which reaffirmed our community's commitment to the development of future housing solutions for our hapū with the floor advising to "haere tonu."

On the 13th and 14th of April, We are looking forward to seeing all our whānau come together to commemorate and celebrate the life of Rēnata Kawepō.

This year's theme for Rēnata Kawepō weekend is "Hapū Unity & Flourishing." The event will feature various kaupapa centered on this theme, including a prayer breakfast involving civic leaders and a visionary session to gather input from the community on our future hapū aspirations, among other engaging kaupapa aimed around hapū flourishing.

Lastly, we'd like to remind whānau that we have an open-door policy at our office at the Marae. If you have any concerns please do feel free to pop in and see one of the kaimahi, or alternatively email us at [info@piringahapu.com](mailto:info@piringahapu.com).

**Renata Hakiwai**  
**Acting General Manager and Managing Director**

**Te Piringa Hapū**

**SAVE THE  
DATE.**

**Rēnata Kawepō Weekend 13th  
& 14th April**

**Hui Taumata Friday May 31st**

# RECOVERY LEAD.

**NEALA ROSANDICH**



## Introduction to Neala Rosandich

Nō Ngāti Raukawa raua ko Ngāti Kahungunu ahau.

Kia ora! My name is Neala Rosandich, and it is a profound honour to be the Recovery Lead for Piringa Hapū on behalf of our whānau, hapū and marae across our takiwā. I've had the privilege of being part of the Ōmahu community since I was 18 through my partner Shanon Hawea, and it was just three years ago that we built our first house down Taihape Road. Having personally been severely affected by Cyclone Gabrielle, I deeply understand the extensive recovery toll it has taken on our community. Despite it being over a year since the cyclone, the path to full recovery stretches ahead of us still.

My primary role involves ensuring that the objectives outlined in the Utaina 10-year recovery plan are being implemented, as well as providing support to our pou leads in any areas they need assistance with. My vision is to guarantee that all affected whānau receive the essential help and support they need to rebuild their homes, secure them against future disasters, and cultivate a thriving community for the years to come.

Previously, as the relationships advisor at Tamatea Pōkai Whenua, I was part of a dedicated team leading the cyclone recovery efforts. I aim to use my accumulated skills and experience to significantly contribute to the welfare of our whānau, hapū and marae here.

I also want to extend my personal gratitude to Piringa Hapū for the immense support given to my partner Shanon and myself throughout the recovery process. The incredible work carried out on behalf of the community is truly inspirational, and I am utterly honoured to join the team and continue this vital mahi for our whānau, hapū, and marae.

I eagerly look forward to advancing this work and collaborating closely with the community to offer my assistance where needed.

**Aku mihi ki a koutou katoa,  
Neala**



## FUTURE DEVELOPMENT STRATEGY / SPATIAL PLANNING

Recovery Lead Neala Rosandich held an FDS/Spatial planning hui for Te Piringa Hapū on Monday, March 25th. During this session, we gathered valuable input from those present concerning Te Piringa Hapū spatial plan and our submission to the Napier and Hastings Future Development Strategy (FDS) on behalf of ngā hapū me ngā marae of our takiwā.

The meeting started with an introduction highlighting the significance of a spatial plan in addressing crucial aspects such as the identification and preservation of wāhi taonga and wāhi tapu amidst urban expansion. Whānau then divided into discussion groups to delve into specific topics, providing feedback. The community's insights and feedback have been recorded and will play a pivotal role in guiding our collective decision-making process moving forward.



# POU TANGATA.

**WELFARE & HOUSING**

## Kaimahi Planning Day

In February we had a kaimahi planning day in Napier where each workstream was able to come together. This was a valuable opportunity for all teams to align their objectives and share ideas on how to best achieve our mission as outlined in our Utaina 10-year Recovery Plan. The day was filled with insightful discussions, brainstorming sessions, and team-building activities.



## Hinetitama wānanga tuatahi

"Ko Hinetitama koe, matawai ana te whatu i te tirohanga". We are creating space for wahine to be together, build relationships and learn from our tipuna kuia, ngā Hine Rei o te Ao. Our first Hinetitama wānanga we welcomed Whare Ahuru Rongomamau and Te Umutarangi Timoti Pahi, we delved into our whakapapa connections with Rev Zhane to understand how our four hapū connect.

In the warm embrace of mana wahine, we find restoration and empowerment, drawing strength from the stories and teachings of our ancestors. As we continue to walk the path laid out by those who came before us, we do so with open hearts and minds, ready to embrace the wisdom that flows through our veins like a sacred river of knowledge. Together, we stand as an example to the enduring spirit of wahine, united in our quest for growth, mātauranga, connection, and understanding.



## Hinetitama wānanga tuarua

Ko te Mana o te Wāhine, ko te kaupapa. We delved deeper into our understanding of who Hinetitama is, ko tōna mana. Te Umutarangi Timoti Pahi returned and we expanded our knowledge of Rongomamau and the healing aspects of the Art.

We had an amazing whakapapa session with Keita Tuhi and John Matthews. Our whakapapa emphasizes building connections, fostering relationships, and creating a sense of belonging within our hapū. We shared stories, experiences, and laughter, deepening our bond and sense of what it means to belong to our hapū..



### Feedback from wananga

"My highlight from the wāhine weekend was learning the art of Hinekeira and learning te ururu atea."

"My highlight from the wāhine weekend was sharing space with whānau, learning to look within and being able to help heal myself."

"What I will be taking away from this wananga and applying to my journey is looking after number 1 which is ourselves so we can look after others."

"Where theres darkness, light is to come."

# Te Ruinga

UPCOMING RANGATAHI WĀNANGA!

connecting our rangatahi to their tūrangawaewae.

- ✦ Rangatahi 16 - 24
- ✦ Wānanga (Marae, significant pā sites,
- ✦ whakapapa, waiata & whakawhanaungatanga)
- ✦ Car licenses
- ✦ Financial Literacy
- ✦ Pathway Planning & much more!

TO REGISTER

CONTACT TIA HOKIANGA 021 084 54210 OR TIA@PIRINGAHAPU.COM

DATES TBD



## Welfare Catch-ups

Some of you may have been seen or contacted by our Navigators for a Welfare check-in. This will become a routine task for our Navigators. Should you wish to schedule a meeting, please reach out to Sage or Chad at: [sage@piringahapu.com](mailto:sage@piringahapu.com) and [Chad@piringahapu.com](mailto:Chad@piringahapu.com). We highly recommend that families participate in these check-ins so when opportunities arise, our Navigators know how they can assist you. It also offers us another chance to ensure your well-being.



# Mind, Body & Soul

## Sit & Fit

Every fortnight on Tuesdays at 10 a.m. (the upcoming session being on April 2nd), an enjoyable and gentle "sit and fit" exercise class is offered for kaumātua, pakeke, and anyone interested in engaging in light, low-intensity exercises to promote physical movement.



## Make your mind a priority

Counselling Services are available for all our whānau, kaumātua, pakeke and tamariki through Āwhina Whānau services. Our Navigators are available to help you with the referral process.



Āwhina  
Whānau  
Services



### **"Nei rā he maara kai mō tātau, hai wai ū, hai oranga mō tātau."**

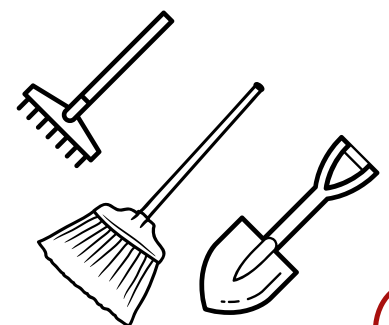
Tātau ko te Piringa Hapū | Ngāti Hinemanu | Ngāi Te Ūpokoiri | Ngāti Honomokai | Ngāti Mahuika nau mai haramai ki te rā tapu o Rēnata Kawepō!

**Whānau you are welcome to join us every Sunday at 5PM for karakia in our whareni kahukuranui.**

## Equipment/tools available for whānau

We have the following list of equipment/tools accessible for the community's utilization. For any inquiries or assistance, kindly reach out to a navigator or visit the tari during office hours.

- Spades
- Rakes
- Brooms
- Waterblasters
- Shovels
- Forks
- Wheelbarrows
- Leaf rakes



## Volunteer Appreciation Kai

Kaimahi from Te Piringa Hapū were invited to The Volunteer Appreciation Day hosted by HBRC, HDC & NDC.

"A year on, we reflected on our amazing volunteers whose courage, selflessness, kindness, generosity, and tireless hard work has helped us get through," said Mayor Hazlehurst.

"Through both the response and the recovery our region united with a determined spirit; our people worked together to support each other, especially those in extreme need: NZ Fire and Emergency, Police, Civil Defence, the National Emergency Management Agency, the NZ Defence Force, Surf Lifesaving, volunteer search and rescue, helicopter pilots, and local groups and individuals from schools, marae, churches, community centres and more, who used whatever they had to save the lives of so many, and then shelter and feed our distressed people."



## Ōmahu kura at Ōmahu Marae

We have had the honor of hosting Ōmahu School at the Marae on multiple occasions in recent months. In week 4, the children spent two days at Ōmahu Marae while the school premises were undergoing demolition. Matua John and Whaea Keita

dedicated these days to educating the children about the intricacies of the whareniui Kahukuranui, narrating stories of the whare, and imparting knowledge about Ōmahu.



## Congratulations to Apache Hanara-Ngahe and Salem Ottley-Karena

Te Piringa Hapū extends heartfelt congratulations to Apache Hanara-Ngahe and Salem Ottley-Karena for their remarkable achievements. Apache and Salem have been appointed as the Head Students of Flaxmere College for 2024. Apache has also secured a position as a member of the Hastings Youth Council.

Apache is an ex student of Ōmahu School, and time and time again demonstrates his commitment to serving our hapū selflessly. Amongst other things, his dedication to service is evident through his active participation in church services alongside our Minister on Sundays, his engagement at Pō Mōteatea every Monday evening, and the support he gives to our marae and paepae during tangihanga.

"In a world of despair and hunger, may you be a hākari of aroha and manaakitanga."

# HOUSING KAIMAHI.



**Conway Te Rito**  
HOUSING MANAGER



**Koriana Williams**  
HOUSING CO-ORDINATOR

## CONTACT OUR HOUSING LEADERS

**Conway:** [Conway@piringahapu.com](mailto:Conway@piringahapu.com)

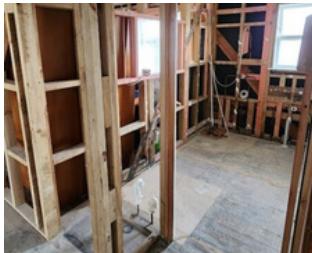
**Koriana:** [Koriana@piringahapu.com](mailto:Koriana@piringahapu.com)

## Housing Repairs Programme

### COMPLETED PROJECTS

We are excited to announce the recent completion of an additional two homes in our Housing Repairs Programme! We will be sharing images and profiles of these two houses on our facebook page very soon.

### WHAT OUR TEAM HAVE BEEN WORKING ON



### SCOPE OF THE PROJECT

Piringa Hapū is committed to supporting the community in Ōmahu following the devastating floods. As part of our 'Housing Repairs Programme', we are providing assistance to homeowners who are not insured and have been affected by the floods.

Our goal is to repair the damaged homes, ensuring that families have a safe and comfortable place to live.

Our programme currently have spaces available, if you would like to apply, please contact [Conway@piringahapu.com](mailto:Conway@piringahapu.com) or [Koriana@piringahapu.com](mailto:Koriana@piringahapu.com).

### WE'VE BROADENED OUR ASSISTANCE

Our team is dedicated to providing support to those facing challenges with their insurance coverage or specific areas in their homes that need attention. We can potentially offer assistance to whānau who are underinsured or have sections in their homes that fall outside the coverage of their insurance policies. While we cannot guarantee that we can solve all issues, our efforts will be concentrated on enhancing the areas in homes that contribute to fostering healthier living environments.

Please keep an eye out as we are launching a new initiative very soon to support insured whānau.

### GET THE BALL ROLLING.

**Conway:** [Conway@piringahapu.com](mailto:Conway@piringahapu.com)

**Koriana:** [Koriana@piringahapu.com](mailto:Koriana@piringahapu.com)





# Cabins & Transportable Homes

All 40 cabins in Ōmahu have landed with most connected to services and whānau living in them. These cabins/transportable homes help our whānau return home while their own homes are still undergoing repairs. This initiative is designed to offer temporary shelter to our families, prioritizing their welfare and facilitating a seamless transition after the repair process.

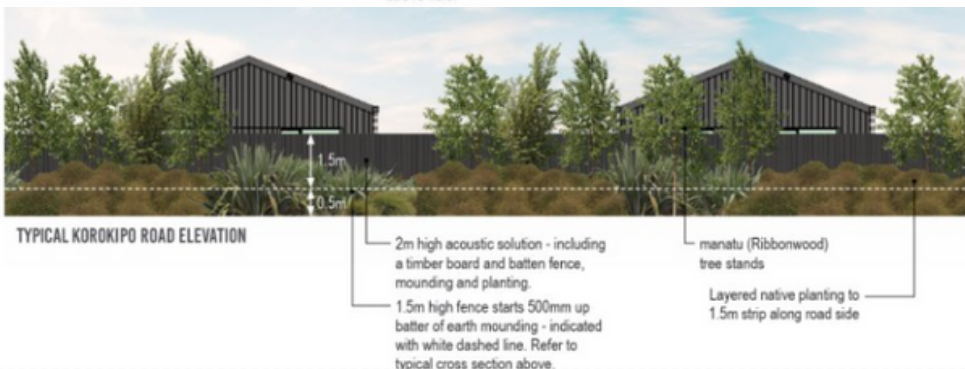
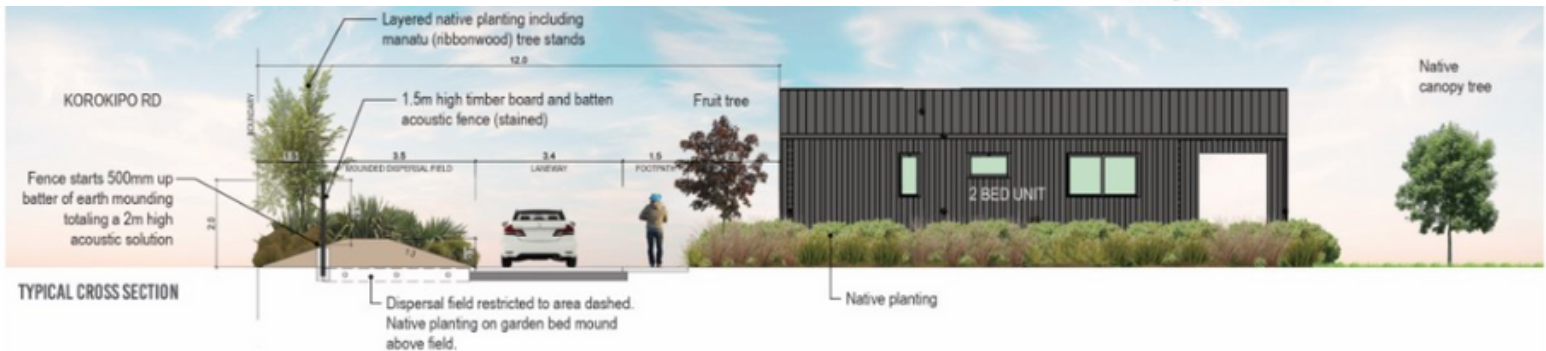
Nkll are nearing the end of this programme of work, but may have a few more cabins coming to Ōmahu over the next few weeks.



## TRANSITIONAL PAKAINGA PROJECT.

### Hapū-led, Government enabled

In collaboration with Ngāti Kahungunu Incorporated, we are constructing 11 whare as transitional pakainga. These pakainga are intended to provide temporary housing for our whānau who were affected by flooding and are still awaiting repairs to their homes, as well as provide a long term solution to warm and safe housing for our Kaumātua in the future



**Hon Louise Upston**

**Minister for Social Development and Employment**



## **Help for homeowners impacted by severe weather**

Temporary Accommodation Assistance will soon be available to more people who can't live in their homes due to the severe weather events of 2022 and 2023, Social Development and Employment Minister Louise Upston says.

"This will help more people who had to move out of their homes and have extra accommodation costs to cover following the Auckland floods and Cyclone Gabrielle in 2023, and floods that hit the top of the South Island in August 2022.

Those who now qualify include:

- People whose homes are uninhabitable but did not receive a red or yellow placard from their council
- People whose lack of insurance cover was for reasons outside of their control, having taken reasonable steps to get insurance cover in time
- People whose choice of temporary accommodation was not previously eligible, such as flats and house sharing agreements, hire agreements for cabins, mobile homes or caravans, lodging or boarding arrangements, or commercial accommodation.

People can apply for this expanded assistance from 1 April 2024. Anyone who was previously declined or thought they were ineligible and believe they may now qualify are encouraged to contact MSD from this date.

"I've asked MSD to review the applications of people who have previously been declined support, to see whether they may now be eligible," Louise Upston says.

"We're not extending this support to the small number of people whose homes are solely held in trusts because the complexity of the legislative changes required would have taken significant time and prolonged hardship for those who do now qualify."

### Notes on expanded Temporary Accommodation Assistance

Temporary Accommodation Assistance is a weekly payment for homeowners displaced by severe weather events and who are facing two sets of unavoidable accommodation costs

How much you can get is based on your family type and the area your temporary accommodation is in. More information on the rates for this payment can be found [here](#)

A lump sum hardship payment is also available to newly eligible people who could not cover the full cost of their temporary accommodation as far back as 1 January 2024. The final date to apply for this will be 30 April 2024

This payment aligns with the payment to people who qualified under the original criteria, which recognised gaps in financial support for up to three months before they became eligible for this programme

Applications from those who already qualified under the programme's previous criteria remain open



**Zhane Tahau Whelan**

MANAGER  
POU TIKANGA



**Cobham Burns**

RESEARCH  
ASSISTANT



**Maora White**

PROJECT  
CO-ORDINATOR

# POU TIKANGA CULTURE & IDENTITY

CONTACT OUR POU TIKANGA TEAM

**zhane:** [zhane@piringahapu.com](mailto:zhane@piringahapu.com)

**Maora:** [maora@piringahapu.com](mailto:maora@piringahapu.com)

**Cobham:** [cobham@piringahapu.com](mailto:cobham@piringahapu.com)



## Ngāti Kahungunu Kapa Haka Regionals



📷 SERENA HAKIWA

### TE PAEPAE O KAHUKURANUI

"Ko Kahukuranui e tū nei!"

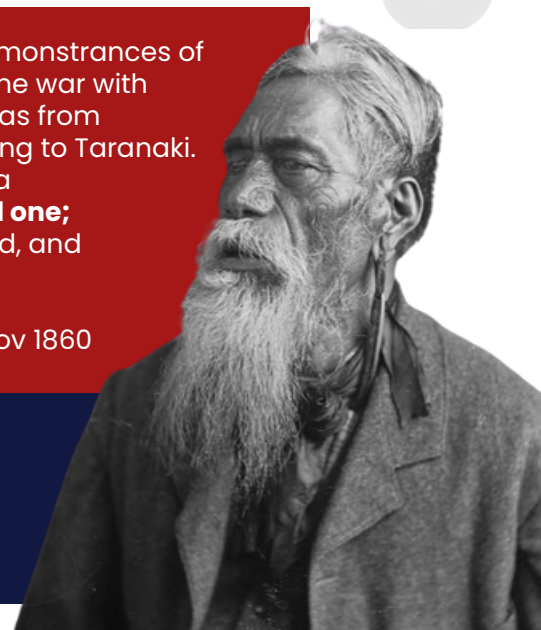
Our paepae stood this year at Te Kahu o te Amorangi. We had a wonderful time representing our hau kainga and supporting ngā kapa katoa!

The Ngāti Kahungunu regional kapa haka festival was filled with excitement as Kahungunu showcased our talents and celebrated haka together. From the powerful haka performances to the graceful poi dances, each moment was a true reflection of the mana and beauty of kapa haka and ngā taonga tuku iho. We wish to thank Keita Tuhi and John Matthew for leading our paepae, and thank all paepae members. It is with no doubt that the tū of Te Paepae o Kahukuranui will inspire all our uri and the next generation to take part in and stand in kapa of the kainga.

### TE KUPU A RĒNATA – "MY NAME IS MĀORI"

"The governor is in the wrong. We fully expected that he would listen to the remonstrances of us natives and some of you English; but not so, he is determined to carry on the war with W. King. He goes on gathering soldiers from one land after other, even as far as from England, in order to destroy those brethren of ours. That made us think of going to Taranaki. Just as you are all English, though one is a Bishop, another a minister, one is a governor, and another a soldier, and another a settler. **So we (natives) are all one; Maori is my name:** though one man builds houses, and another provides food, and another makes canoes, and some (thanks to you!) are fighting now. My name is like the Church of God, of which the scripture says, **"If one member suffers, all the members suffer with it."** - Rēnata Kawepō, Nov 1860

Our ariki Rēnata Kawepō was a prophetic voice for unity and from that unity the flourishing of our people. May these words of Rēnata rest upon our hearts and mind as we prepare for the Rēnata Kawepō weekend celebration focusing on the unity and flourishing of our hapū as we prepare to host te iwi Māori for the Hui Taumata. May we join together with Rēnata in saying my name is Te Upokoiri, my name is Hinemanu, my Name is Honomōkai, my name is Mahuika and **we are all one.**



## Te Ahikō: Research & Archives

- Archiving and collecting of Mātauranga-ā-hapū.
- Hapū Research Unit.
- Production of Mātauranga-ā-hapū resources.
- Whare Taonga | Marsden Fund

## Te Wānanga o Kahukuranui

- A tribal and fully immersive form of teaching and education in our mātauranga-ā-hapū, reo, tikanga and kawa
- Te Reo and Tikanga Revitalization Strategy

## Te Ngakina o Rēnata Kawepō

- Opportunities for the gathering of the Hapū.
- Spiritual and Cultural Wellbeing
- Building the vision of Rēnata Kawepō for a community of aroha, manaakitanga and auahatanga.

## HUI TAUMATA 31ST OF MAY

A Hui Taumata will be held in Ngāti Kahungunu on 31 May 2024 hosted by Ōmahu Marae to identify solutions for Māori Unity-Kotahitanga.

This hui which will be hosted by Ōmahu Marae and our hapū is important for embedding our cultural influence as a marae and hapū for the flourishing of our takiwā and te iwi māori and picking up the mantle that Rēnata Kawepō has left for us. Our tīpuna Renata Kawepō created our marae of Ōmahu to be not only the marae for the iwi but also a marae for the motu. Rēnata also left with us a mantle of chiefly leadership to support the unity of te iwi Māori in the face of hardship and join with him in being a great prophetic voice and champion for Kotahitanga.

It has been more than 140 years since we as a hapū has hosted a national hui of this magnitude and will require us to revive the tikanga and matauranga of our tīpuna to do so. We also look forward to welcoming Kingi Tūheitia back to the marae after his visit not long after Cyclone Gabrielle hit last year. It will be fantastic for him to see the progress that has been made in the last 12 months as we come together for the unity and flourishing of te iwi Māori.

Our Pou Tikanga team invites all our uri to join with Te Paepae o Kahukuranui in preparing for this historical event it with require the support of all our whānau working and supporting in the front and in the back. Come to Pō Mōteatea 6pm every Monday night or get in touch with Rev. Zhane.

## THE BUILDING OF A HAPŪ ATLAS

Our cultural mapper and researcher Cobham Burns is currently leading the project of the building a Hapū Atlas for our hapū. We currently have upwards of 100+ sights of significance identified, and mapped. GIS mapping and research is currently underway for all the sites of significance throughout our Hapū. With a significant amount of places mapped, we are now in the process of focusing in on the finer details, locating sites of significance way in the back country and bringing to life the research, whakapapa and mātauranga of each of our wāhi taonga.

We hope to have a wānanga on this atlas to share and bring to life the rich history and mātauranga throughout our takiwā with all our uri in the very near future.

## Cyclone Gabrielle Anniversary

On the 14th of February the 1 year anniversary of when Cyclone Gabrielle devastated our community, we gathered together as a community to reflect on the response and recovery we have undertaken as a hapū to date.

We heard accounts of our survival from the floods and stories that showcased the unbreakable spirit of our hapū and community. As we sat together, sharing memories and emotions, we were reminded of the bonds that tie us together, making us stronger than any storm that may come our way.

The anniversary served as a poignant reminder of how far we have come since Cyclone Gabrielle wreaked havoc on our lives. It was a time to honor those who lost so much, and to celebrate the victories, big and small, that have marked our journey of recovery.



## Oral Histories

We only have only a handful of kaumatua and custodians of irreplaceable local mātauranga, whakapapa, tribal memory and local history left within our hapū. We desperately need to interview urgently our kaumatua and these custodians to preserve their memories and inherited knowledge, which is in danger of being lost forever. If you are interested in sharing your tribal memory with us and for it to be preserved for future generations in our archive **we would love for you to get in touch with us for an interview.**

## TE RAU O TE HUIA

### What is Te Rau o Te Huia?

The Te Ahikō Advisory Committee bring together traditional authority and academic knowledge to guide the implementation of the Hapū Archive & Research Strategy. By merging ancestral knowledge, with contemporary scholarship, the committee ensures that the strategy is culturally sensitive, comprehensive, and effective for our hapū. Through their collaborative efforts with our Archives Team, they pave the way for the preservation and celebration of the taonga tuku iho and stories of the Hapū for generations to come.

### Who are Te Rau o Te Huia?

Membership of Te Rau o Te Huia includes:

- Dr Joseph Te Rito,
- Keita Tuhi,
- John Matthews
- Dr Arapata Hakiwai,
- Pareputiputi Nuku,
- Wero Karena
- Brian Morris.

## INTRODUCING TE WĀNANGA O KAHUKURANUI

Our Pou Tikanga team is currently working with Te Paepae o Kahukuranui leadership in the development of Te Wananga o Kahukuranui. This wānanga is a learning community of Te Paepae o Kahukuranui committed to living out its tikanga through teaching the reo, while practicing and engaging with the taonga tuku iho of our hapū and marae.

Te Wananga o Kahukuranui is a tribal and fully immersive form of teaching and education. It is based on the ideal that a person learns best when they learn in community and in the fullness of the life of the hapū, fully immersed in the language, context and environment of the paepae and our marae as a hapū. Our whare wānanga are our marae which are the centres and sources of our tribal life together.

Te Wānanga o Kahukuranui works towards the development of kaikōrero, kaikaranga, kaikarakia, kaiwero, kaitiaki and hapai ō in the hapū and on our marae in preparation for a lifetime of learning, leadership, and service.

We hope to announce wānanga dates and a kura reo/tikanga for the kainga later this year as this kaupapa develops more.

### PŌ MOTEATEA- 6PM EVERY MONDAY

Pō Moteatea is a weekly learning environment which provides a learning space taught mostly in Te Reo Māori for our kaumatua, pakeke and rangatahi to come together and learn our traditional waiata and moteatea of our hapū. This space also provides learning in whakapapa, tikanga and is a source of regular tribal life.

## MARSDEN FUND-TAONGA

We are pleased to announce that our Hapū has put in an EOI to build a Marsden Fund around our taonga. The research team includes Dr. Amber Aranui, Pareputiptui Nuku, Darryl Leigh Thomson, and Natasha Hanara, supported by Dr Arapata Hakiwai and overseen by Te Rau o te Huia.

Aims to apply for the Marsden Fund for five key objectives related to taonga revealed during Cyclone Gabrielle:

- Recover history and mātauranga of identified taonga.
- Understand traditional techniques for future generations.
- Develop indigenous framework for taonga care after natural disasters.
- Create a management strategy for taonga preservation.
- Build research, archives, art, and curriculum development capacity within hapū and iwi.



### THE ESTABLISHMENT OF A HAPŪ ARCHIVE

Since the devastating effects of Cyclone Gabrielle, flooded houses saw old manuscripts, photos, maps being damaged and washed away it is of the utmost urgency that we secure our mātauranga Māori, whakapapa and oral histories through archiving and the utilisation of technology to ensure it is preserved for future generations

Te Ahikō - The Piringa Hapū archives is a critical component of our cyclone recovery and resilience as we ensure the survival of our mātauranga. Its Objectives are the following:

- Securing the cultural identity of Piringa Hapū and related tribes
- Protecting and managing physical and digital materials collected by Te Ahikō
- Ensuring easy access to archival materials for the community
- Promoting interaction with and understanding of cultural knowledge for identity strengthening and cultural revitalization.

We look forward to sharing this whakapapa and mātauranga with our hapū members through wānanga and by welcoming interested hapū members to come and visit the team



13TH & 14TH APRIL | RĒNATA KAWEPŌ WEEKEND 13TH & 14TH APRIL | RĒNATA KAWEPŌ WEEKEND 13TH & 14TH APRIL | RĒNATA KAWEPŌ WEEKEND 13TH



# Renata Kawepō Prayer Breakfast

7.30AM- 9.00AM  
SAT 13TH OF APRIL 2024

Inviting our civic leaders to join with our hapū and whānau members for a buffet breakfast in Ruatapuwhāhine.



# RĒNATA KAWEPŌ WĀNANGA

10.00AM- 2.00PM SAT 13TH OF APRIL 2024

Kaikōrero presenting on the life of Rēnata Kawepō & having a wānanga as a hapū on our unity and flourishing.

Aim: Preparing a discussion paper to present at the Hui Taumata on National Māori Unity taking place here at Omaha on the 31st of May



# RĒNATA KAWEPŌ POP UP MARKETPLACE

10AM - 2PM SAT 13TH OF APRIL 2024

Whānau we are inviting anyone who would like to do a stall to sell goods or kai to register for our pop up marketplace.

ŌMAHU MARAE



CONTACT [INFO@PIRINGAHAPU.COM](mailto:INFO@PIRINGAHAPU.COM) TO REGISTER



# VISIONARY & HAUORA SPACE

10AM - 2PM SAT 13TH OF APRIL 2024

Kaimirimiri | Hauora  
Te Piringa Hapū Vision & Workshop



# RĒNATA'S MOKOPUNA

10AM - 2PM SAT 13TH OF APRIL 2024

A TAMARIKI AND RANGATAHI SPACE  
WITH ACTIVITIES AND FUN.



# Hapū Hikoī for Unity & Flourishing

SUN 14TH APRIL 2024

9AM: Runanga Marae  
Karakia | Whakatau | Kauhau

5.3KM

11AM: Te Awhina Marae  
Karakia | Whakatau | Kauhau

550M

12PM: Omahu Marae  
Whakatau & Hakari Tapu mō Rēnata

12PM: Kai Hakari in Ruatapuwhāhine  
Special Performance: Te Paepae o Kahukuranui

There will be van and/or bus options to follow the hikoī for kaumatua and anyone who doesn't want to walk.



CONTACT: [ZHANE@PIRINGAHAPU.COM](mailto:ZHANE@PIRINGAHAPU.COM)



# SUSTAINABILITY LEAD.

## PATRICIA NUKU



### Introduction to Patricia Nuku

Kia ora tātou, I am deeply honored to have been selected as the Sustainability lead for Pou Taiao for our Hapū.

My journey to this esteemed role has been shaped by years of unwavering dedication to our community and environment, bolstered by the constant support of my whānau.

Currently, I hold the esteemed position of Ōmahu Marae trustee and serve as a Trustee on the Fernhill Puketapu Trust and our Whānau trust. My passion for effective governance was further cultivated during my tenure of six years on the Te Runanganui o Heretaunga board.

My connection to our Taiao has been a driving force behind my involvement over the past decade in Te Manaaki Taiao under Te Taiwhenua o Heretaunga. Working closely under the mentorship of Marei Apatu and Dale Moffett, I assumed the role of Te Takawaenga for our Heretaunga Marae hapū, contributing to wananga workshops on environmental issues and emergency response. Over the past five years, I have actively participated in cultural monitoring, eDNA testing, and Inanga monitoring along our rivers. Additionally, my participation in the HDC Waahi Tapu review board underscores my commitment to safeguarding our sacred sites, including endeavors to prevent the desecration of Puketapu.

As a member of the HBRC Tangata whenua Global Gravel group, I recognize the vital importance of collaboration in addressing environmental challenges. Urgent action is imperative in our Takiwā to restore our waterways and ecosystems, enhance air quality for the well-being of our Hapū, rejuvenate our flora and fauna, combat erosion through native replanting initiatives, and fortify emergency response protocols.

I am resolutely dedicated to leveraging my acquired skills and expertise to lead these initiatives, ensuring that the preservation of our Taiao and the welfare of our people remain at the forefront of our pursuits.

## POU TAIAO OBJECTIVES

**Objective 1.1:** Mitigate current and future impacts of rainfall on the environment. Secure our communities from flooding whilst restoring and preserving our waterways and the natural environment.

**Objective 1.2:** Restore our waterways (river, streams and lakes) impacted by flooding.

**Objective 1.3:** Native planting and conservation efforts across community, reservations, roads, embankments, and unproductive farmlands.

**Objective 1.4:** Improve our understanding of the storm's impacts on the natural environment.

**Objective 1.5:** Grow climate resilience, green energy options to increase self-sufficiency and self-resilience.

**Objective 1.6:** Upgrade and build a resilient Three Waters infrastructure.

**Objective 1.7:** Increase air purity and mitigate pollution.



# UTAINA 10 YEAR RECOVERY PLAN



AVAILABLE TO DOWNLOAD AND BROWSE FROM OUR WEBSITE [PIRINGAHAPU.COM](http://PIRINGAHAPU.COM)

