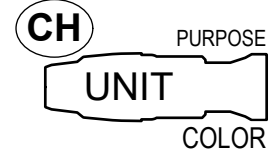


**SYMBOL KEY**

	ETC SOURCE 4 10° @ 575W	2
	ETC SOURCE 4 10° (FS) @ 750W	1
	ETC SOURCE 4 19° @ 575W	15
	ETC SOURCE 4 26° @ 575W	21
	ETC SOURCE 4 36° @ 575W	27
	ETC SOURCE 4 50° @ 575W	34
	ETC SOURCE 4 70° @ 575W	3
	ALTMAN 360Q 6x9 @ 575W	6
	COLORTRAN 10° FRESNEL @ 2kW	5
	L&E MINISTRIP @ 750W / CELL	8
	ELATION LEVEL Q7 @ 127W	15
	CHAUVEU DJ LINEDANCER	2
	ADJ DOUBLE DERBY	1
	HIDE N' SEEK	1
	HES SOLAFRAME 750 @ 562W	6
	HAZEBASE BASE HAZER @ 1.5kW	1
	VORNADO 293HD FAN @ 73W	1
	6.25" TOP HAT	6
	7.5" TOP HAT	6
	IRIS	2

**TYPICAL UNIT**



**COLOR NOTE**

NOTE 1: DIAGONAL SPLIT FRAME: L138/R317  
PLEASE USE CLEAR GEL TAPE, NOT SCOTCH MAGIC

**NOTES**

- 1) ALL FIXTURES ON 18" CENTERS UNLESS NOTED OTHERWISE.
- 2) FLUORESCENTS RIGGED TO FLY IN AND OUT.
- 3) FLUORESCENTS ARE STANDARD 5000K COOL WHITE TUBES.
- 4) LINEDANCERS ARE NON-DIM SOUND ACTIVATED DJ EFFECTS.
- 5) ALL PAR BOTTLES BEGIN WITH AXIS AS INDICATED.
- 6) ALL LEEKOS START FOCUS SHARP TO SHUTTER.
- 7) ALL FRESNELS START FOCUS FULL SPOT.
- 12) ALL UNITS IN SAME CHANNEL MAY TWOFER.
- 13) ALL UNITS MUST HAVE SAFETY AND BLACK GEL FRAME.
- 14) PLEASE SET UP TECH TABLES ON THE ALICE (EAST) SEATING.
- 15) ALL CABLE IN CATWALKS MUST BE CLEAN AND TIGHT TO THE PIPE. CREW AND PERFORMERS ARE IN THE CATS THROUGHOUT THE PERFORMANCE.
- 16) ALL CABLE ON SCAFFOLD WALLS MUST BE CLEAN AND TIGHT TO THE PIPES. THESE ARE SCENIC ELEMENTS AND ARE VISIBLE TO THE AUDIENCE.

THIS DRAWING REPRESENTS VISUAL CONCEPTS ONLY. THE DESIGNER IS UNQUALIFIED TO DETERMINE THE STRUCTURAL OR ELECTRICAL APPROPRIATENESS OF THIS DESIGN, AND WILL NOT ASSUME RESPONSIBILITY FOR IMPROPER ENGINEERING CONSTRUCTION, HANDLING OR USE. ALL MATERIALS AND CONSTRUCTION MUST COMPLY WITH THE MOST STRINGENT APPLICABLE FEDERAL AND LOCAL FIRE, SAFETY, ENERGY, AND ENVIRONMENTAL CODES.

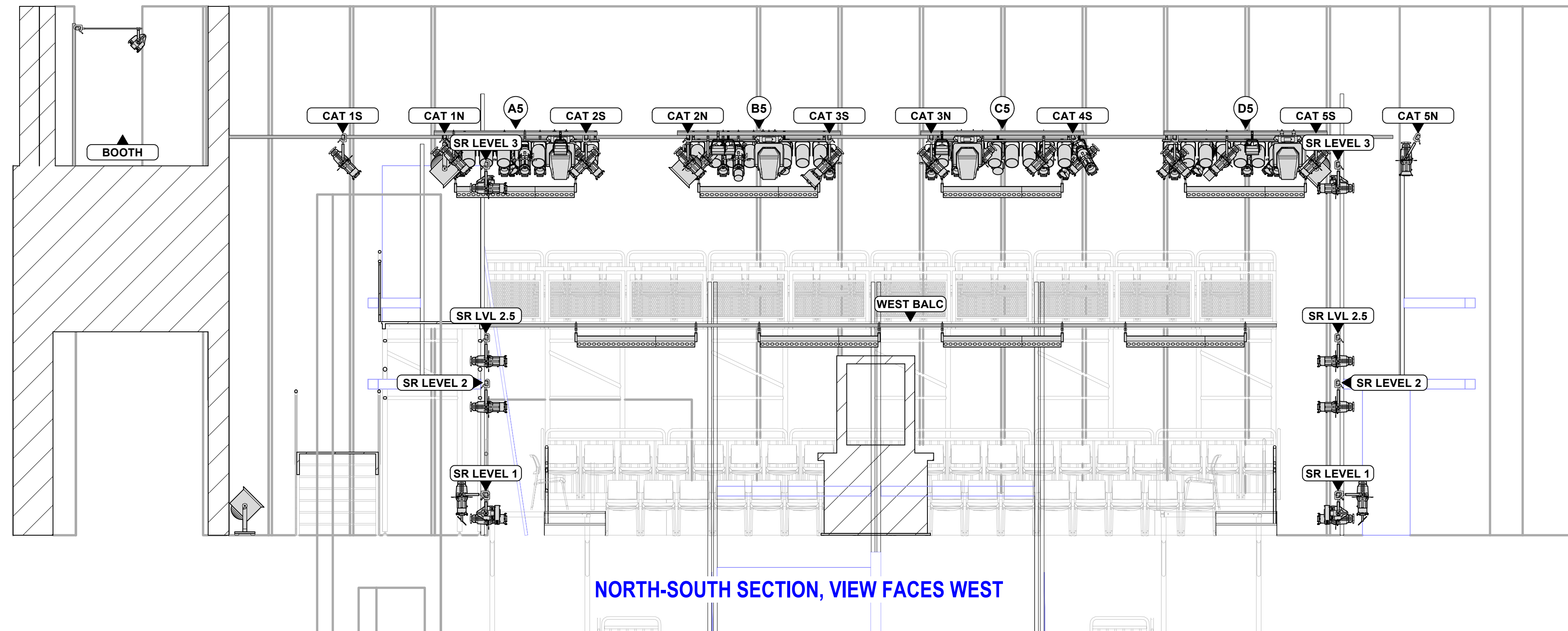
DIRECTOR.....	DAVID CATLIN
SCENIC DESIGN.....	DAN OSLING
COSTUME DESIGN.....	MARA BLUMENFELD
LIGHTING DESIGN.....	CHRISTINE A. BINDER
SOUND DESIGN.....	RAY NARDELLI
PRODUCTION MANAGER.....	SARAH BURNHAM
ASSOCIATE LIGHTING DESIGN.....	SAM EADS

**LOOKINGGLASS ALICE**  
ADAPTED BY DAVID CATLIN

HEALY THEATRE  
2350 N RACINE AVE, CHICAGO, IL, 60614  
LIGHTING DESIGN II, PROF. DAN FRIEDMAN

**OVERHEAD PLOT**

DATE: 07/12/2025	#	DATE	NOTE	BY
DRAFTED BY: SME	A	7/12/25	FINAL	SME
SCALE: 1/4" = 1'-0"				
SIZE: ARCH D				
TOTAL PLATES: 3				

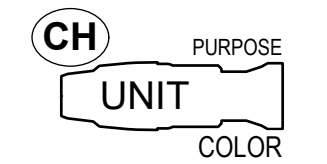


NORTH-SOUTH SECTION, VIEW FACES WEST

**SYMBOL KEY**

	ETC SOURCE 4 10° @ 575W	2
	ETC SOURCE 4 10° (FS) @ 750W	1
	ETC SOURCE 4 19° @ 575W	15
	ETC SOURCE 4 26° @ 575W	21
	ETC SOURCE 4 36° @ 575W	27
	ETC SOURCE 4 50° @ 575W	34
	ETC SOURCE 4 70° @ 575W	3
	ALTMAN 360Q 6x9 @ 575W	6
	COLORTRAN 10" FRESNEL @ 2kW	5
	L&E MINISTRIP @ 750W / CELL	8
	ELATION LEVEL Q7 @ 127W	15
	CHAUVET DJ LINEDANCER	2
	ADJ DOUBLE DERBY	1
	HIDE N' SEEK	1
	HES SOLAFRAME 750 @ 562W	6
	HAZEBASE BASE HAZER @ 1.5kW	1
	VORNADO 293HD FAN @ 73W	1
	6.25" TOP HAT	6
	7.5" TOP HAT	6
	IRIS	2

**TYPICAL UNIT**



**COLOR NOTE**

NOTE 1: DIAGONAL SPLIT FRAME: L138/R317  
PLEASE USE CLEAR GEL TAPE, NOT SCOTCH MAGIC

**NOTES**

- 1) ALL FIXTURES ON 18" CENTERS UNLESS NOTED OTHERWISE.
- 2) FLUORESCENTS RIGGED TO FLY IN AND OUT.
- 3) FLUORESCENTS ARE STANDARD 5000K COOL WHITE TUBES.
- 4) LINEDANCERS ARE NON-DIM SOUND ACTIVATED DJ EFFECTS.
- 5) ALL PAR BOTTLES BEGIN WITH AXIS AS INDICATED.
- 6) ALL LEKOS START FOCUS SHARP TO SHUTTER.
- 7) ALL FRESNELS START FOCUS FULL SPOT.
- 12) ALL UNITS IN SAME CHANNEL MAY TWOFER.
- 13) ALL UNITS MUST HAVE SAFETY AND BLACK GEL FRAME.
- 14) PLEASE SET UP TECH TABLES ON THE ALICE (EAST) SEATING.
- 15) ALL CABLE IN CATWALKS MUST BE CLEAN AND TIGHT TO THE PIPE. CREW AND PERFORMERS ARE IN THE CATS THROUGHOUT THE PERFORMANCE.
- 16) ALL CABLE ON SCAFFOLD WALLS MUST BE CLEAN AND TIGHT TO THE PIPES. THESE ARE SCENIC ELEMENTS AND ARE VISIBLE TO THE AUDIENCE.

THIS DRAWING REPRESENTS VISUAL CONCEPTS ONLY. THE DESIGNER IS UNQUALIFIED TO DETERMINE THE STRUCTURAL OR ELECTRICAL APPROPRIATENESS OF THIS DESIGN, AND WILL NOT ASSUME RESPONSIBILITY FOR IMPROPER ENGINEERING, CONSTRUCTION, HANDLING OR USE. ALL MATERIALS AND CONSTRUCTION MUST COMPLY WITH THE MOST STRINGENT APPLICABLE FEDERAL AND LOCAL FIRE, SAFETY, ENERGY, AND ENVIRONMENTAL CODES.

DIRECTOR.....	DAVID CATLIN
SCENIC DESIGN.....	DAN OSLING
COSTUME DESIGN.....	MARA BLUMENFELD
LIGHTING DESIGN.....	CHRISTINE A. BINDER
SOUND DESIGN.....	RAY NARDELLI
PRODUCTION MANAGER.....	SARAH BURNHAM
ASSOCIATE LIGHTING DESIGN.....	SAM EADS

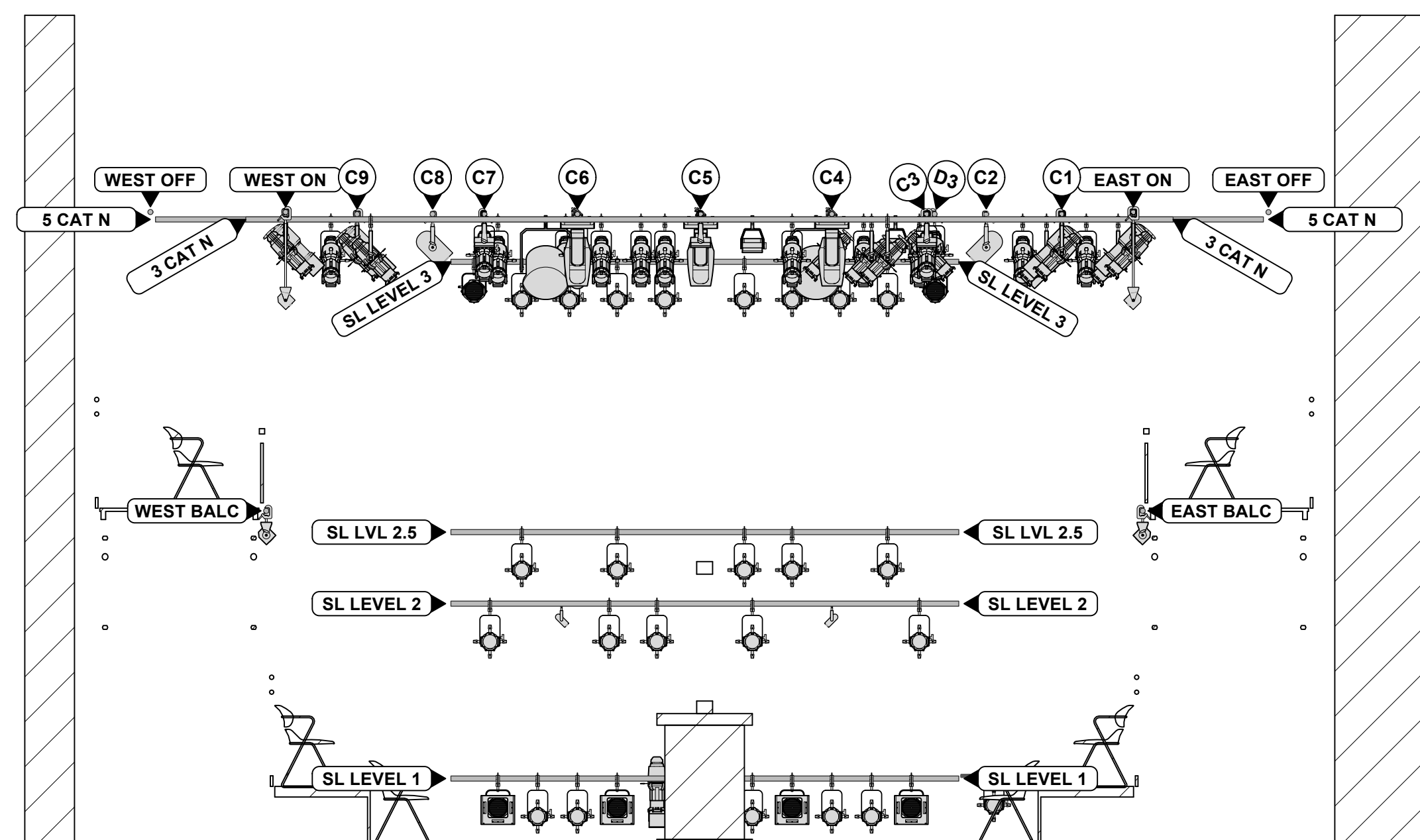
**LOOKINGGLASS ALICE**  
ADAPTED BY DAVID CATLIN

HEALY THEATRE  
2350 N RACINE AVE, CHICAGO, IL, 60614  
LIGHTING DESIGN II, PROF. DAN FRIEDMAN

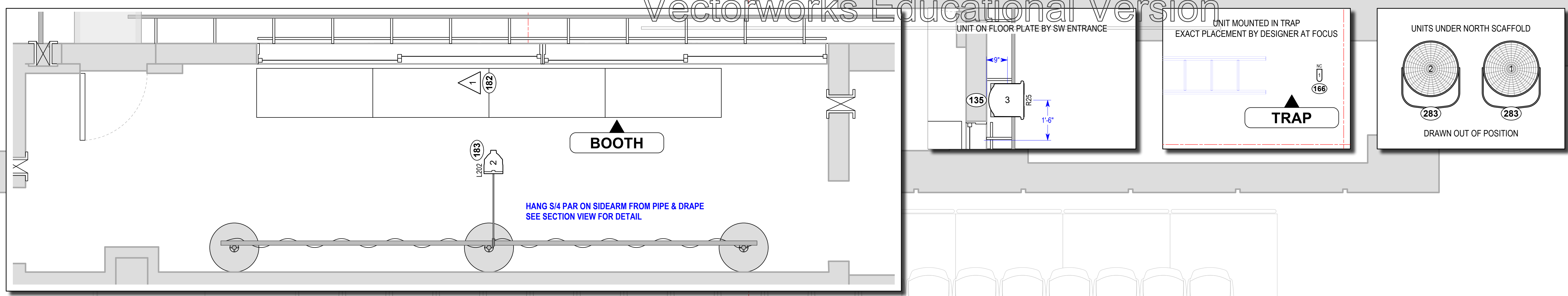
**SECTION**

DATE: 07/12/2025	#	DATE	NOTE	BY
DRAFTED BY: SME	A	7/12/25	FINAL	SME
SCALE: 1/4" = 1'-0"				
SIZE: ARCH D				
TOTAL PLATES: 3				

2

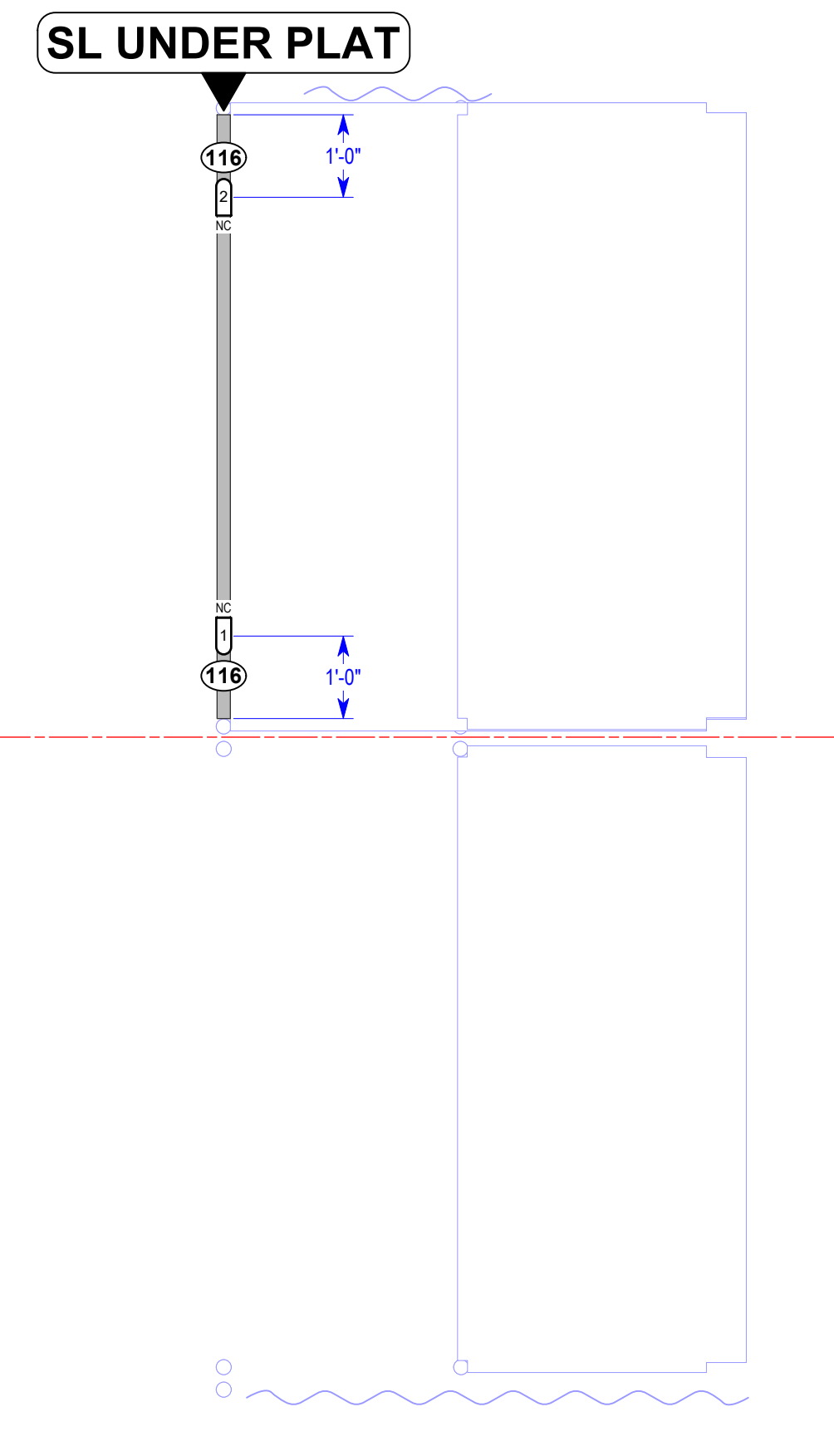
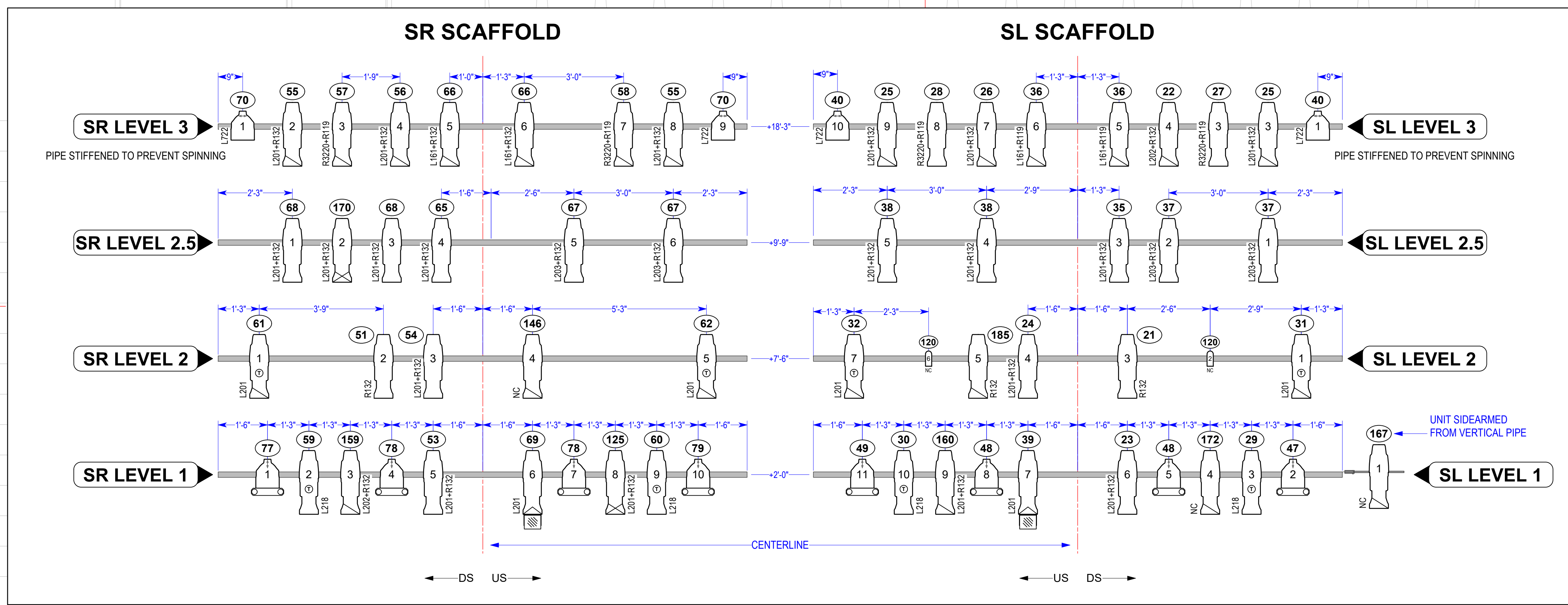
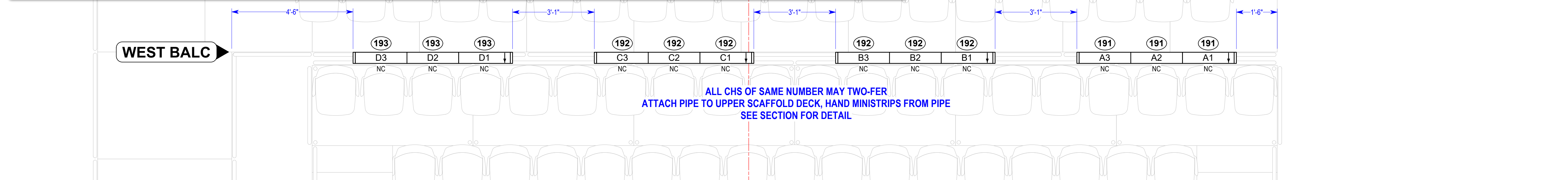


EAST-WEST SECTION, VIEW FACES NORTH



### SYMBOL KEY

	ETC SOURCE 4 19° @ 575W	2
	ETC SOURCE 4 26° @ 575W	23
	ETC SOURCE 4 36° @ 575W	22
	ETC SOURCE 4 50° @ 575W	2
	ETC SOURCE 4 PAR MFL @ 750W	12
	ETC SOURCE 4 PAR XWFL @ 575W	1
	COLORTAN 10" FRESNEL @ 2kW	1
	L&E MINISTRIP @ 750W / CELL	8
	PAR16 BIRDIE @ 50W	5
	LITTLELITE	1
	MOLEFFECT 24" FAN	2
	SMART COLOR PRO @ 25W	8
	BEAM BENDER	2



### TYPICAL UNIT

	PURPOSE
	COLOR

### COLOR NOTE

NOTE 1: DIAGONAL SPLIT FRAME: L138/R317  
PLEASE USE CLEAR GEL TAPE, NOT SCOTCH MAGIC

- ### NOTES
- 1) ALL FIXTURES ON 18" CENTERS UNLESS NOTED OTHERWISE.
  - 2) FLUORESCENTS RIGGED TO FLY IN AND OUT.
  - 3) FLUORESCENTS ARE STANDARD 5000K COOL WHITE TUBES.
  - 4) LINEDANCERS ARE NON-DIM SOUND ACTIVATED DJ EFFECTS.
  - 5) ALL PAR BOTTLES BEGIN WITH AXIS AS INDICATED.
  - 6) ALL LEKOS START FOCUS SHARP TO SHUTTER.
  - 7) ALL FRESNELS START FOCUS FULL SPOT.
  - 12) ALL UNITS IN SAME CHANNEL MAY TWO-FER.
  - 13) ALL UNITS MUST HAVE SAFETY AND BLACK GEL FRAME.
  - 14) PLEASE SET UP TECH TABLES ON THE ALICE (EAST) SEATING.
  - 15) ALL CABLE IN CATWALKS MUST BE CLEAN AND TIGHT TO THE PIPE. CREW AND PERFORMERS ARE IN THE CATS THROUGHOUT THE PERFORMANCE.
  - 16) ALL CABLE ON SCAFFOLD WALLS MUST BE CLEAN AND TIGHT TO THE PIPES. THESE ARE SCENIC ELEMENTS AND ARE VISIBLE TO THE AUDIENCE.

THIS DRAWING REPRESENTS VISUAL CONCEPTS ONLY. THE DESIGNER IS UNQUALIFIED TO DETERMINE THE STRUCTURAL OR ELECTRICAL APPROPRIATENESS OF THIS DESIGN, AND WILL NOT ASSUME RESPONSIBILITY FOR IMPROPER ENGINEERING, CONSTRUCTION, HANDLING OR USE. ALL MATERIALS AND CONSTRUCTION MUST COMPLY WITH THE MOST STRINGENT APPLICABLE FEDERAL AND LOCAL FIRE, SAFETY, ENERGY, AND ENVIRONMENTAL CODES.

DIRECTOR.....	DAVID CATLIN
SCENIC DESIGN.....	DAN OSLING
COSTUME DESIGN.....	MARA BLUMENFELD
LIGHTING DESIGN.....	CHRISTINE A. BINDER
SOUND DESIGN.....	RAY NARDELLI
PRODUCTION MANAGER.....	SARAH BURNHAM
ASSOCIATE LIGHTING DESIGN.....	SAM EADS

### LOOKINGGLASS ALICE

ADAPTED BY DAVID CATLIN

HEALY THEATRE  
2350 N Racine Ave, Chicago, IL, 60614  
LIGHTING DESIGN II, PROF. DAN FRIEDMAN

### DECK

DATE: 07/12/2025	#	DATE	NOTE	BY
DRAFTED BY: SME	A	7/12/25	FINAL	SME
SCALE: 1/4" = 1'-0"				
SIZE: ARCH D				
TOTAL PLATES: 3				

3