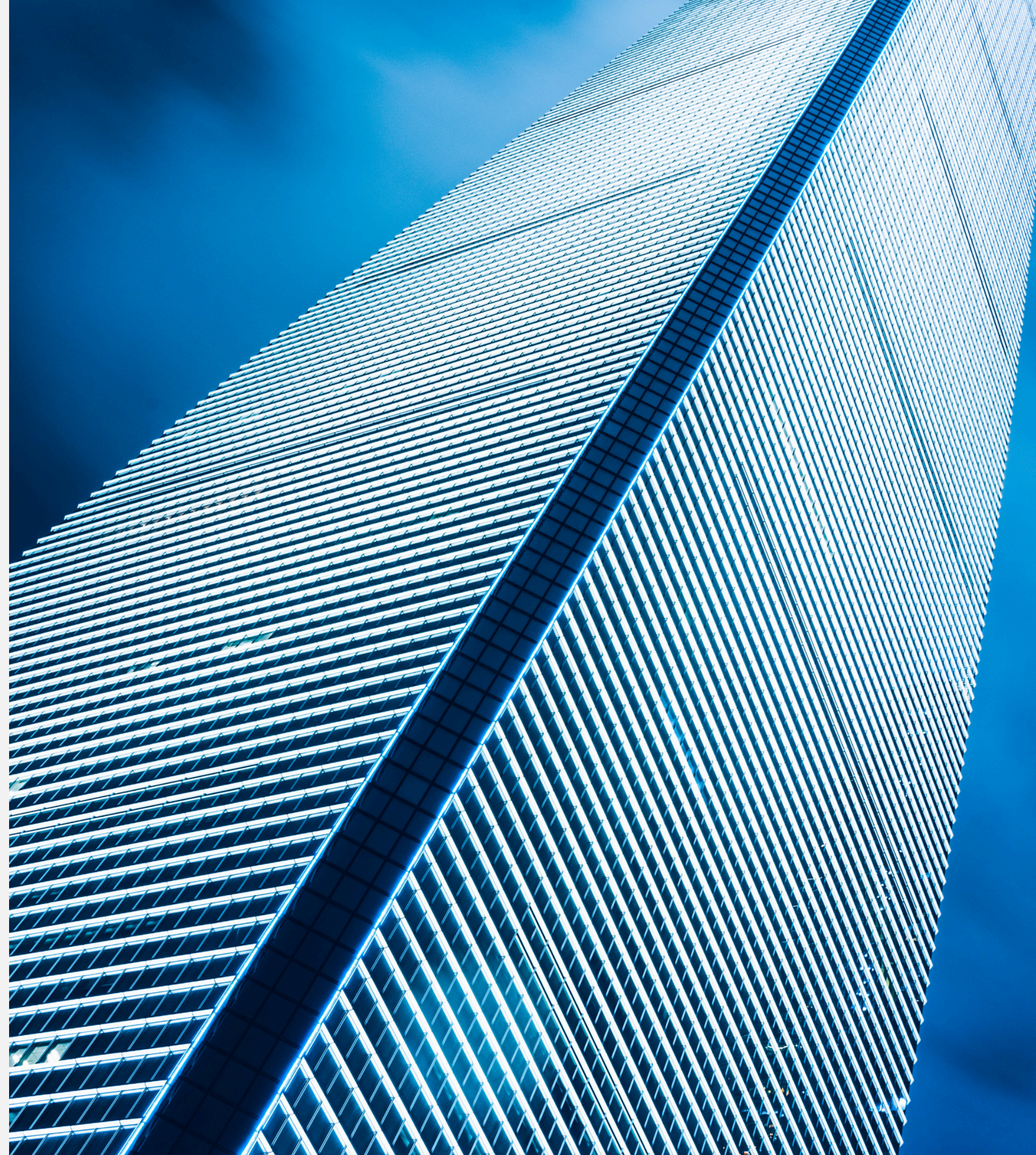




**KM TECHNOLOGY AND  
DEVOLPMENT CO. LTD.**

# **COMPANY PROFILE 2025**

**Engineering the Future. Empowering  
Development.**







## Executive Summary

KM Technology & Development is a multidisciplinary Sudanese firm (est. 2008) delivering advanced engineering consultancy, GIS solutions, infrastructure development, safety and security systems, and vehicle supply. With regional insight and international standards, we serve government and private sectors across Sudan and the MENA region.







- Founded: 2008 (Reg. No. 32246 – Sudan Companies Act 1925)
- Headquarters: Khartoum & Port Sudan, Sudan
  - 200+ Projects Delivered
- Sectors: Defense, Energy, Urban Planning, Academia
- Core Expertise: Engineering, GIS, Infrastructure, Safety, Construction







# About KM Technology & Development

Established in 2008, KM Technology & Development is a leading Sudanese firm specializing in high-quality engineering consultancy, geospatial information systems, and infrastructure development. We support both public and private sectors with end-to-end solutions that meet international standards.







## Our Vision

To be the trusted partner for delivering advanced engineering, geospatial, and technology solutions across the public and private sectors—powered by innovation and scientific excellence.







## Our Mission

- Deliver high-quality, reliable, and sustainable engineering and GIS solutions.
- Empower clients with innovative, data-driven technologies.
- Uphold integrity, safety, and operational excellence in every project.







# Our Strategic Goals

- Leadership in AI & Geospatial Systems
- Human Capital Development & Training
- Client Satisfaction & After-Sales Support
- Environmental Responsibility & Sustainability
- Regional & Global Excellence in Construction and Maintenance







## Why Choose KM Technology?

- 15+ years of proven experience
- Strong partnerships with international technology providers
- Certified engineers, GIS analysts, and project managers
- Local market expertise with global standards
  - Commitment to sustainability, safety, and compliance







# Innovation at the Core

We leverage AI-driven analytics, satellite remote sensing, and mobile GIS to deliver adaptive, accurate, and future-ready solutions across sectors.





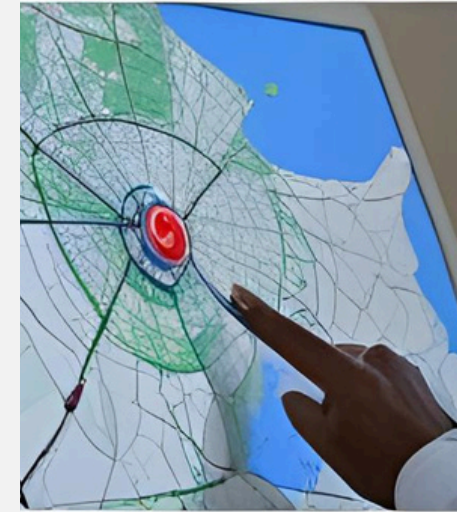


# Sustainability & Environmental Responsibility

- Eco-friendly construction and maintenance practices
- Energy-efficient systems and lifecycle cost optimization
- Alignment with regional environmental regulations and SDGs







## Core Services & Solutions

- 1) Geospatial Information Systems & Data Analytics
- 2) Infrastructure Development & Maintenance
- 3) Firefighting & Fire Detection Systems
- 4) Security, Safety & Specialized Maintenance
- 5) Vehicle & Heavy Machinery Supply
- 6) Construction & General Contracting







# Geospatial Information Systems & Data Analytics

- Remote sensing & satellite imagery
  - Marine & hydrographic surveys
  - Geophysical & geodetic surveying
- Geospatial data collection, analytics & management
- Custom GIS applications & spatial databases







# Satellite Internet & Advanced Connectivity Solutions

- Starlink deployment & configuration services
- High-speed satellite internet for remote areas
  - Integration with GIS & remote monitoring systems
- VSAT, HTS & mobile satellite communication solutions
  - Backup connectivity for mission-critical operations







# Infrastructure Development & Maintenance

- Road & building construction and rehabilitation
  - Maintenance of electrical, HVAC & sewerage systems
- Interior fit-out & structural improvements
  - Project supervision & quality control







# Firefighting & Fire Detection Systems

- Fire suppression systems (FM-200, CO<sub>2</sub>, Sprinklers)
- Addressable & conventional fire alarm systems
  - Design, supply, installation & commissioning
  - Testing, inspection & preventive maintenance
- Compliance with international safety standards







# Security, Safety & Specialized Maintenance

- CCTV & surveillance systems
  - Access control & intrusion detection
- Integrated security for military & government facilities
- Preventive & corrective maintenance programs
- Compliance with safety regulations & standards







# Vehicle & Heavy Machinery Supply

- Transport vehicles & 4x4 fleets
  - Heavy machinery for construction & oil/gas
- Custom vehicle configurations for public services
- After-sales support, maintenance & spare parts







# Construction & General Contracting

- Civil & structural works
- Architectural finishing & interior works
- Project management & site supervision
- Sustainable & energy-efficient construction practices

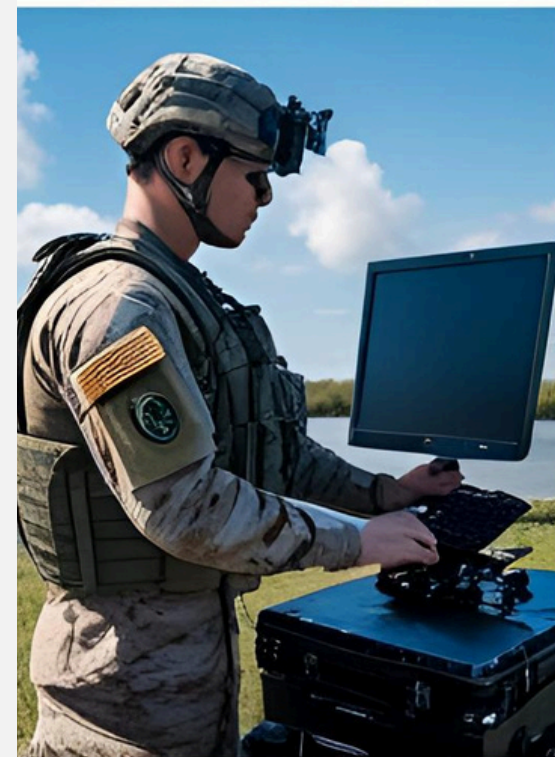
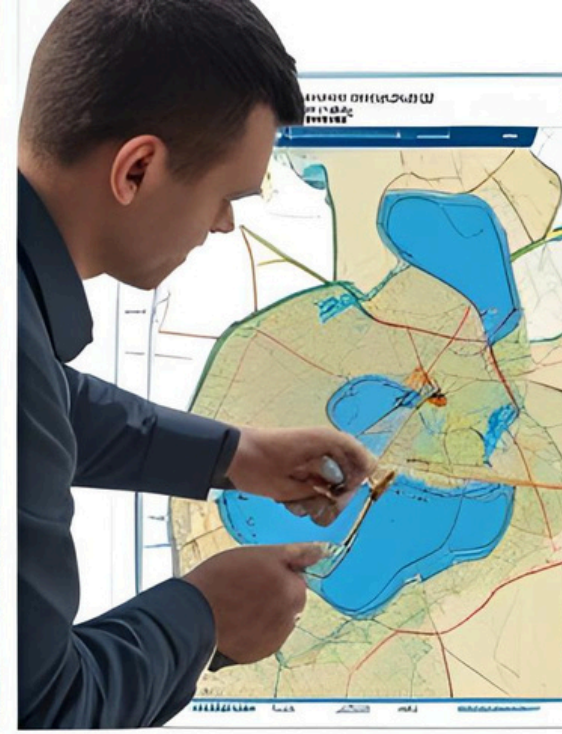






## Selected Projects

- Military GIS Programs: Specialized hardware, software & training
- Surveying & Mapping: Hydrographic & geophysical surveys
- Urban & Environmental Planning: Remote sensing & GIS modeling
- International Collaborations: Satellite data & GIS partnerships







# Clients & Strategic Partners

- Ministry of Defense
- Civil Aviation Authority
- Sudanese Military Academy
- Khartoum Refinery
- Petro-Well
- Sudan Customs
- Ministry of Urban Planning
- University of Khartoum
- Sudan Center for Engineering
- Remote Sensing Center
- Ministry of Finance & Economic Planning
- khartoum Airport
- Sudan Survey Authority
- Air Defense Forces
- Karari Printing
- Safat Aviation Group
- Sudabid
- 2P Petroleum Company
- Air Force Command
- Defence Industries System
- Ministry of Energy
- Petco Petroleum Company
- Giad Industrial Group
- Sudatel







## Regional Commitment: MENA & Africa

- Smart cities & digital transformation
- Sustainable infrastructure & energy-efficient operations
- Localized compliance & culturally aligned delivery







## Contact Us



**+249912339109 +201555193379**



**km-sudan.com**



**info@km-sudan.com**



**Khartoum & Portsudan - Sudan**