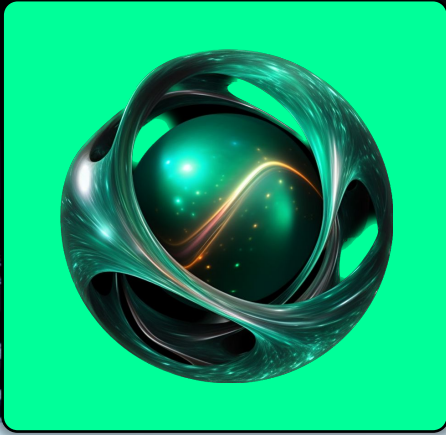


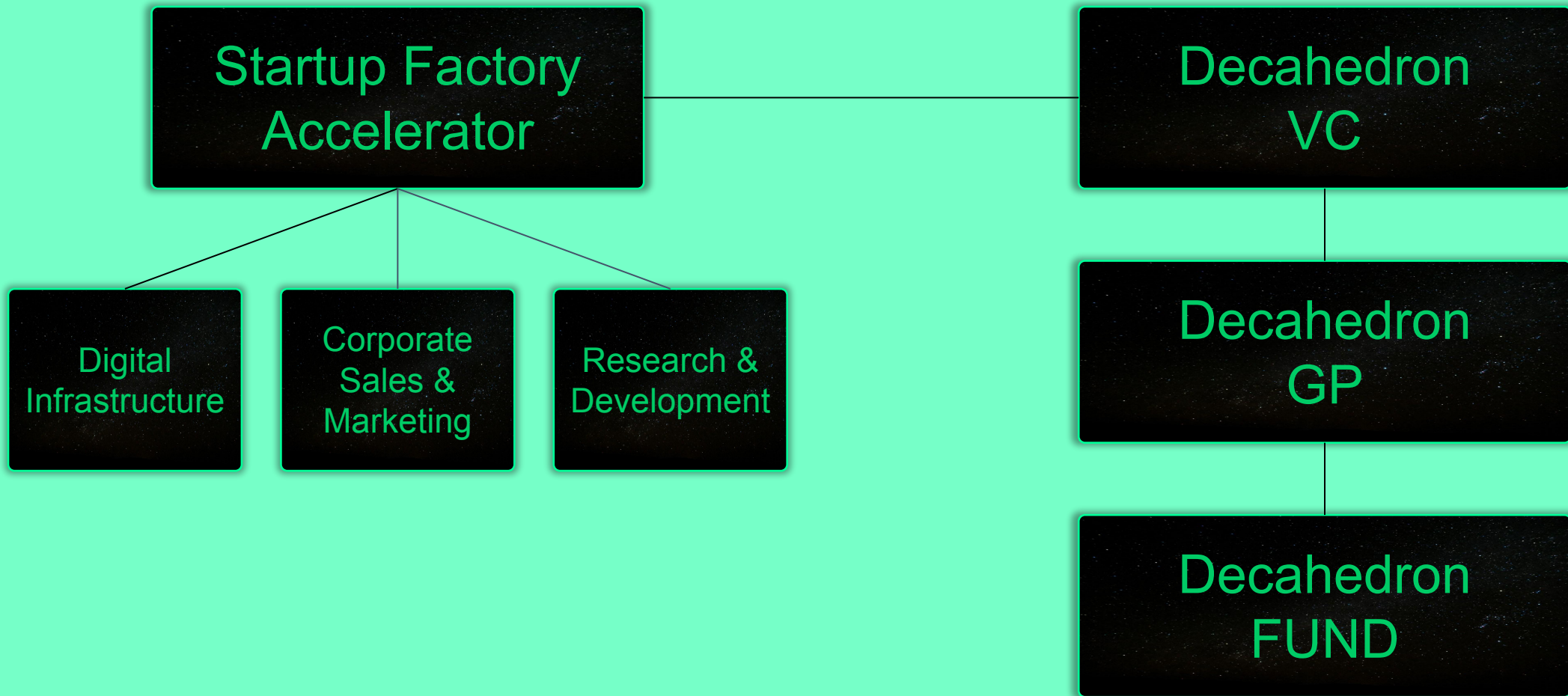
A futuristic, sci-fi cityscape with advanced technology, glowing structures, and a green glowing sphere. The scene is set in a desert-like environment with a blue sky and a body of water in the foreground. The architecture is highly detailed and futuristic, with many glowing elements and complex structures. A large, green, glowing sphere is positioned in the foreground, partially overlapping the text.

Startup Factory



Startup Factory is a technology development firm, incubation, and accelerator program to create and support startups building the space commerce infrastructure. Our mission is to provide a nurturing environment for founders, offering them essential resources, technologies, mentorship, networking, and investment opportunities to help them accelerate their growth and maximize their chances of success.

Company Summary



Infrastructure

Lack of
Access to
Essential
Resources

Need for
Expert
Guidance

Difficulty in
Building a
Network

Market
Validation
and Product
Fit

Bridging the
Skill Gap

Access to
Technology

Team
Building

Funding

Problem

Curated Talent Pool

Startup Factory maintains a curated pool of interns, mentors, and industry experts with diverse skill sets. Founders are matched with individuals who possess the expertise needed to complement their project's requirements.

Structured Algorithm

From Education, ideation to product launch and beyond, startups benefit from a clear roadmap and support system that keeps their projects on track.

Collaborative Environment

Startup Factory fosters a collaborative environment where founders, interns, and volunteers work together to tackle challenges and leverage each other's strengths.

Access to Tools and Resources

Startups enrolled in the Factory Program gain access to a range of tools, technologies, and resources to support their project development

Guidance

Founders receive mentorship and guidance from experienced entrepreneurs, industry professionals, corporations, government and subject matter experts.

Solution

Startup Factory Algorithm

Phase one Education

- Curriculum Development
Content Focus: MBA Space Leadership, International Business & Business Innovation.
- Workshops and Seminars: Business Fundamentals, related technologies
- Assessments

Phase two Acceleration

- Prototype Development
- Human Capital Support
- Business and Market Strategy
- Digital Commerce Infrastructure
- Sales Team Support

Phase Three Corporate

- Corporate integration & partnerships
- Corporate collaboration programs: pilot programs
- Partnerships and Collaborations
- Acquisitions
- Scaling and Long term growth support

Investors Relations

- Pitching ideas to the Startup Factory Investor Network

Algorithm

Prototype Development

Phase One Ideation and Conceptualization

- Clearly defining the core idea and its potential impact
- Identifying the problem to be addressed and unique differentiators
- Defining the target market and assessing scalability
- Creating Supporting Documents

Phase two MVP Development

- Research and Validation
- Creating a proof of concept, and developing prototypes.
- Initial market validation and refinement of the idea

Phase Three Business Model and Partnerships

- Business Model Development
- Connecting founders with potential team members
- Partnerships and Collaborations
- Business Plan & Deck Pitch development

Phase Four Investors Relation

- Pitching ideas to the Startup Factory Investor Network

MVP Development

Space Leadership

Students will engage in an applied business education while exploring business economies, law and government, and technology from a space sector context.

Business Innovation

The MBA equips students with a solid foundational understanding of business topics while developing essential critical thinking, problem-solving and leadership skills resulting in a transformational learning experience

International Business

The Global MBA equips students with a strong foundational understanding of business topics while developing essential critical thinking, problem-solving and leadership skills to lead an inclusive, human-centered global workplace

Our MBAs



TechStars

- 106 Billion Market Cap
- 4100 Startup Funded



Y Combinator

- 150 Billion Market Cap
- 1900 Startup Funded
- 1 Billion Raised



Plug & Play

- 51 Billions Market Cap
- More than 10 Billion Raised



StartupBootcamp

- 5.6 Billions Portfolio Valuation
- 1600 Accelerated Startups



Competitors



Advantages



Khalia Padilla

Co-Founder & MP

- Advisor USF
- Startup Mentor
Startup Bootcamp &
Alianders
- CEO Imagine Engine
Studios



Ricardo Font

Co-Founder & MP

- Business Developer
Startup Bootcamp
- Chairman Imagine
Engine Studios
- Quantum Physicist



Jay Modi

Advisor

- AI-powered Supply
Chain Risk Expert | CTO
at Alchemai | Fractional
CPO at Korb Satellite
Systems LLC. | Senior
Advisor at Quadrant
Strategiesy

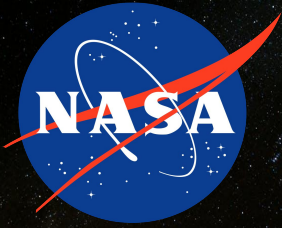


Tom O' Neil

Advisor & GP

- Retired Partner in
Ernst & Young
- CPA 41 years

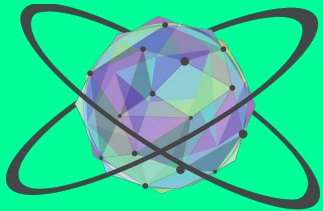
Team Members



GitHub



stripe



GALA

