



SUBDREDGE Series

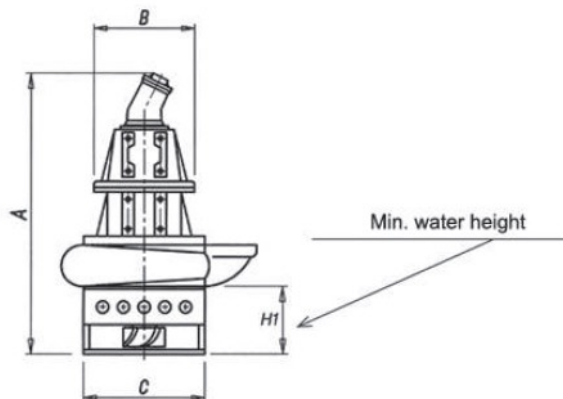
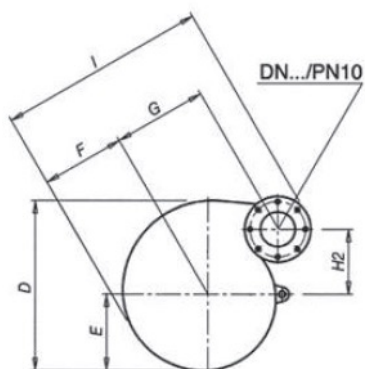
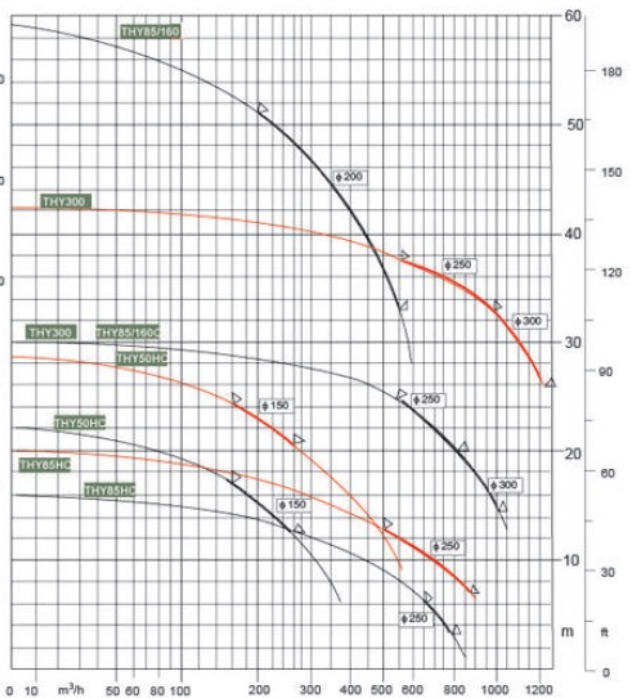
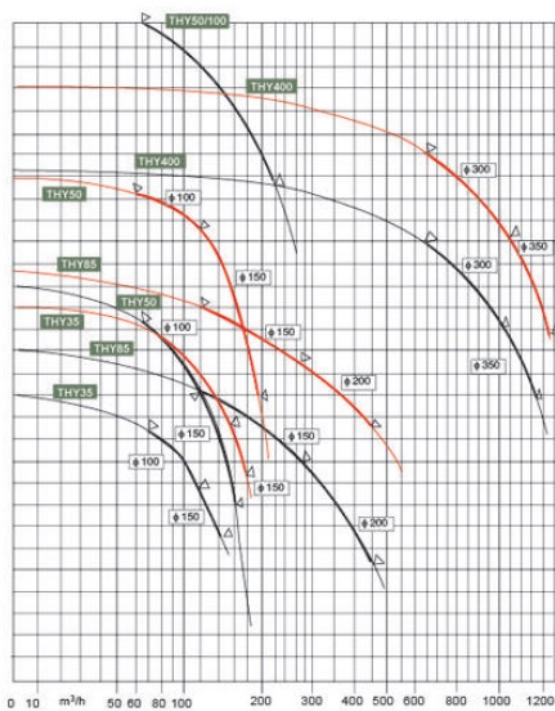
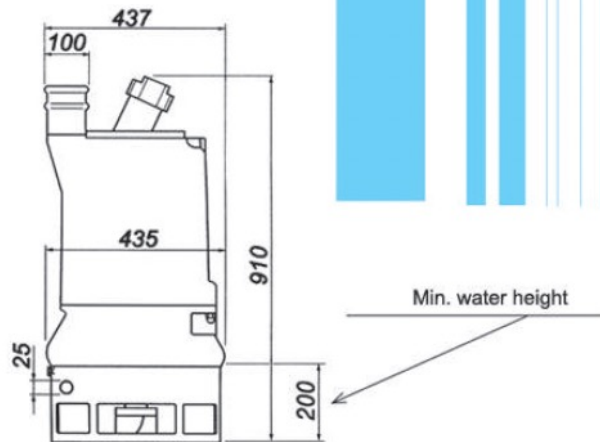
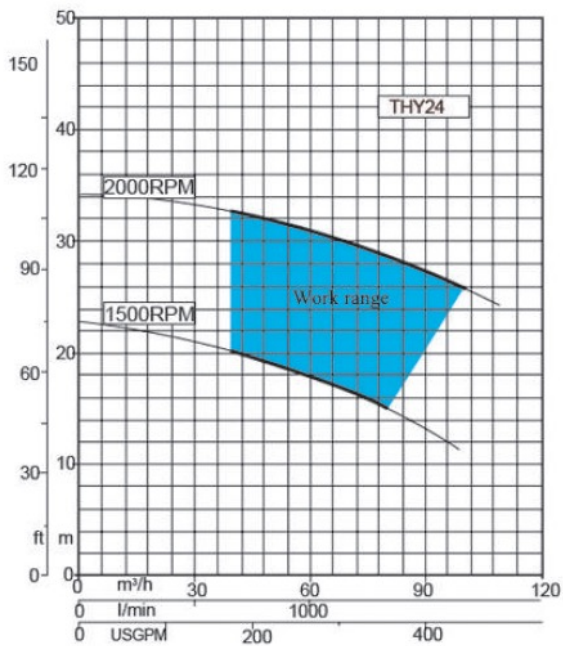
“ Efficiency by Systems ”

A large, industrial hydraulic dredge pump is shown in operation, partially submerged in blue water. The pump is a complex, cylindrical metal structure with various pipes, valves, and a large, dark, multi-bladed cutting head at the bottom. The cutting head has several sharp, curved blades. The pump is mounted on a barge or a similar floating platform. In the background, there are yellow cylindrical buoys and a concrete structure with rebar protruding from the water. The overall scene is an industrial construction or maintenance site in a body of water.

**Series THY
Hydraulic Dredge pump**



LIMEDA INTERNATIONAL



Hydraulic Pump

THY24



THY35
THY50
THY50HC
THY85
THY85HC
THY175
THY220
THY300
THY400



Hydraulic Pump Parameters

Hydraulic motor parameters

Model	Size (mm)	Q (m ³ /h)	H (m)	R.P.M	Power		Particles (mm)	Dis. (c.c)	Pressure min/max (bar)	Oil flow min/max (l/min)
					HP min/max	KW min/max				
THY24	100	60/80	18/28	1500/2000	14/25	10/19	25	20	210/300	30/40

Hydraulic Pump Parameters

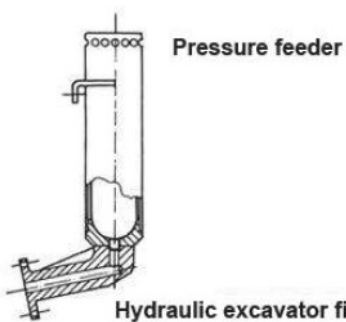
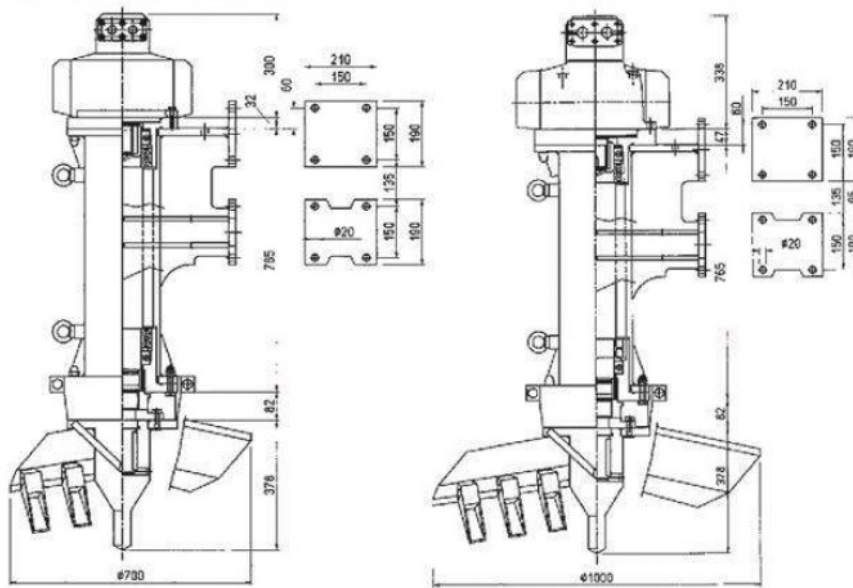
Model	Size (mm)	Q (m ³ /h)	H (m)	R.P.M	Power		Particles (mm)	Dis. (c.c)	Pressure min/max (bar)	Oil flow min/max (l/min)
					HP min/max	KW min/max				
THY35A	100/10	140/120	20/28	980/1180	25/35	18/25	35	55	210/250	54/65
THY35B	150/10	140/170	14/20							
THY50A	100/10	90/108	30/42	980/1180	35/50	25/37	35	75	210/250	74/89
THY50B	150/10	140/170	228/32							
THY50HC	150/10	210/250	15/21	980/1180	35/50	25/37	60	75	210/250	74/89
THY85A	150/10	200/240	22/30	980/1180	60/85	44/62	60	108	250/300	106/130
THY85B	200/10	350/420	16/23							
THY85HC	250/10	720/860	5/7	980/1180	60/85	44/62	90	108	250/300	106/130
THY175A	200/10	350/420	30/43	750/900	117/175	75/128	60	335	210/260	252/302
THY220A	250/10	720/780	22/26	600/650	150/220	110/160	120	500	230/300	300/325
THY220B	300/10	900/975	18/21							
THY300A	250/10	720/900	22/34	600/750	150/292	110/214	120	500	230/350	300/375
THY300B	300/10	900/1200	18/28							
THY400A	300/10	950/1000	34/42	750/850	320/400	239/295	120	710	270/300	535/605
THY400B	350/10	1100/1200	28/34							

Specifications

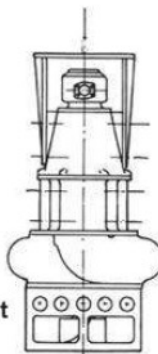
Model	A (mm)	B (mm)	C (mm)	D (mm)	E (mm)	F (mm)	G (mm)	H1 (mm)	H2 (mm)	I (mm)	Weight (kg)
THY35A/B	1210	420	540	667	323	327	380	270	145	818	500/510
THY50A/B	1330	460	600	774	363	374	418	270	298	902	600/610
THY50HC	1425	460	540	736	334	350	412	270	282	902	700
THY85AB	1390	460	548	747	334	362	428	290	197	933	700/730
THY85HC	1470	460	548	1020	449	478	485	326	340	1165	100
THY175A	1895	640	760	985	450	535	545	400	400	1250	1600
THY220A/B	2400	640	1015	1015	576	652	750	470	453	1600	3500/3550
THY300A/B										1600	3500/3550
THY400A/B	2600	640	1015	1015	576	652	750	470	453	1600	3550/3600

Hydraulic Excavator

Technical Specifications	Excavator THYPRO 20	Excavator THYPRO 35
R.P.M	30/40/50	30/40/50
Power (cont. operation) (HP)	11/15/18	18/24/30
Power (inter. operation) (HP)	13/18/22	21/28/36
Capacity (l/min)	22/29/36	35/46/58
Pressure (cont. operation) (bar)	250	250
Pressure (inter. operation) (bar)	350	350
Torque (cont. operation) (kgm)	260/261/262	418/420/423
Torque (inter. operation) (kgm)	311/313/314	501/504/507
Weight (kg)	500	600



Hydraulic excavator fixed support



APPLICATIONS



Sludge treatment / Storage tank cleaning / Cesspit / Thickener cleaning / Barge discharge



Dump pit / Incineration pit cleaning / Waste pond dredging / Sewage sump cleaning



Gold tailings mining / Ball mill cleaning / Settling ponds / Underground soft soil collection tank / Tunnel excavation / Tailings landfill



Mill scale pit / Coking plant scale pit / Slag pit / water treatment basins / Cleaning pool



Reservoir of deep excavating (Max.20m) / Mine recovery / Dredging



Trench of dredging & backfill / Caisson cleaning / Bentonite slurries transferring / Removing surface soil / Dredging gravels



Dredging port & wharf / Radioactive cesspit cleaning / coast reclaiming / River, lake and canal dredging



Overflow pool of coke cleaning / Crude oil tank cleaning / Slurries transporting / Settling basin cleaning / Tailings recycling / coke powder recycle pool / sand filling drill transferring / dredger discharge



Waterway dredging / Emergent treating pond / impurity settling pond / fly ash collecting pit / sludge transport cleaning / lime collecting pit / Coal cleaning pool



Marble powder treatment

Using Pictures



THY85B: Exigent condition operating by Fire brigade



