

**COMPANY PROFILE**  
OF  
**Civil Design & Construction (CDC)**  
**Anchor Steel Structure**

Corporate Office: Shurma Bhaban, Flat-10G, Block-G, Road-05, Mirpur-01,  
Police Station- Sha-Ali, Dhaka- 1216,

Email- [joincdc@gmail.com](mailto:joincdc@gmail.com), Phone- +8801718754948, 01571775579

### **Vision:**

Our commitment is to constantly improve the quality of our work in architectural and structural design and services to ensure top performance for your projects. For that reason, we are also striving to serve the best from our part to establish state-of-the-art work, and we have the thrust to ensure our work is certified by the Designer for Standardization. We value our relationships with the architectural community, our customers, and our suppliers. We offer unique solutions to the needs of the structure community both in the pre-construction and construction phases of a project while promoting eco-friendly products and delivering systems that contribute toward eco-friendly work.

### **Mission:**

We are committed to ensuring strong connections with our clients by delivering high-quality products and services.

Our actions are guided by sincerity, integrity, and honesty, upholding the highest ethical and moral values at all times.

As we advance in the steel industry, we strive to create a significant impact on the global market, contributing to an increase in our country's average income and propelling it towards becoming a developed nation in the near future.

### **Our Services:**

CDC is a company that has been providing services for various industrial, commercial, agricultural, and residential structures. With a decade of development, our company has amassed extensive experience in engineering, fabrication, and installation of steel and RCC structures. Our projects have been successfully applied to diverse industries such as office, Neat Wear, Printing, Chemical, Food, Automobile, Packing, Fabrication, Bridge, Road, and more.

We take great pride in offering comprehensive one-stop solutions, catering to the entire project lifecycle from its inception to its successful completion. Our team of professionals is committed to assisting clients in reducing overall costs and achieving efficient project completion. Our range of services includes Budget & Planning, Detailed Design, Procurement Services, and Project Construction Management.

At CDC, we are dedicated to delivering quality solutions, ensuring the success of every project we undertake.

## Introduction:

Civil Design & Construction and together form a prominent Pre-engineered Steel & RCC Structure Manufacturing Company. Our company is dedicated to excelling in infrastructure development, with a particular focus on the pre-engineered steel & RCC structure segment. Since our establishment in 2016 as Civil Design & Construction and in 2016 as, we have successfully completed numerous prestigious projects across various sectors, including Garments, Process plants, Bridges, Roads, Cement industries, Residential & Commercial buildings. Our services have been sought after by some of the nation's leading business entities.

Throughout our journey, both companies have directly owned and executed a significant number of projects, showcasing our commitment to delivering top-quality construction services to our clients."

With these adjustments, the text highlights the collaboration between Civil Design & Construction and while emphasizing their dedication to infrastructure development and delivering high-quality construction projects across diverse sectors. If you have any more specific requests or need further assistance, feel free to ask!

## Office Setup:

Office Management: The office is fully furnished with sitting arrangement of every employee including administrative section, design section, marketing department, accounts section, meeting room, conference room, etc.

Factory

Location : DeshiPara Bazar, Salna, Joydebpur Road, Gazipur.

## Factory Equipment:

### Factory Machinery List (PEB)

S/L	Name of Machine	Qty
1	Diesel Generator-1 (22KVA),	1
2	Diesel Generator-2 (230 KVA)	1
3	Shear Machine, Capacity- 3-Meter	1
4	Iron worker, Capacity-12000-KN	1
5	Auto H-Beam Assembly With Welding Machine	1
6	Submerged Arc Welding (SAW), 550 AM	3
7	Auto CNC Cutting Machine	1
8	Radial Drill, ( 1.5 Meter )	4
9	Slitting Machine	1
10	Hydraulic Press Break ( 3-Meter )	1
11	Hydraulic Press Break ( 2.4 Meter)	1
12	Curve Machine	1
13	Bending (Manual) Machine	1
14	Hydraulic Power Press Machine	1
15	Hydraulic Power Press Machine	1
16	Roller Pipe Bending Machine	2
17	Automatic Shot Blasting Machine Size: 1500x2200mm	1
18	MIG Welding Machine, 500 AM	10
19	TIG Welding Machine 500 AM	15
20	Arc Welding Machine 500 AM	50
21	Overhead Crane Capacity-20-Ton	1
22	Overhead Crane Capacity ( 10-Ton)	2
23	Overhead Crane Capacity ( 10-Ton)	1
24	Overhead Crane Capacity ( 5-Ton )	1
25	Jib Crane, Capacity-2-Ton	2
26	Jib Crane, Capacity-1-Ton	1
27	Magnetic Drill Machine	5
28	Purlin Forming Machine	1
29	Profile Forming Machine	1
30	Air Compressor Capacity- 6 Bar	2
31	Air Compressor Capacity- 7 Bar	2
32	Semi-Auto Cutting Machine	2
33	High-Speed Cutting Machine	3
34	Master Oven, Capacity-500°C	1
35	Angle Rolling Machine	1
36	Cargo Leaf ( 8-Ton)	1
37	Grinding Machine, 7"	7
38	Grinding Machine 4"	10
39	Hand Cutter Machine	10



40	Weight Scale, Capacity-50 Ton	1
41	Hand Drille Machine	1
42	Pencil Granding Machine	2
43	Chain Block 10-Ton	2
44	Chain Block 20-Ton	1
45	Chain Block 50-Ton	2
46	Scaffolding	30
47	Hanging Digital Scale	1
48	Hydraulic Juck	1
49	MIG Welding Machine	2
50	Tube Bending (Semi-auto) Machine	1
51	Tube Bending (Manual) Machine	1
52	Up-Right Vertical Roll Forming Machine	1
53	Horizontal Beam Roll Forming Machine	1
54	Powder Coating Plant (Booth+Oven+Heat Exchanger)	1
55	Phosphating Plant Tank	7
56	Granding Machine	2
57	Burner Machine	1
58	Cottlage Gan	1

### Our Strength:

To achieve the desired out come on every project, the company relies on a team of experienced engineers and skillful professionals for various purpose. They are working as family members of Anchor Steel rather than a team.

Marketing

Brand development

Feasibility studies

Market research

Latest market trends & technology for its products

Competitor market studies

Exploring new market

Planning and implementing a marketing strategy

Developing creative advertisement campaign and promotional literatures

Public relations activities

Project Management





### **Planning:**

Our Project Engineer diligently prepares a comprehensive base schedule, defining all critical milestones and activities. Additionally, they identify major subcontractors and any special requirements, taking into careful consideration the project's size, complexity, and unique specifications. This meticulous planning process ensures that our projects are effectively managed and executed, enabling us to meet project milestones efficiently and deliver high-quality results that align with the project's specific needs and objectives.

### **Execution:**

During the execution phase, our Project Management team communicates the project requirements to all concerned departments within s CDC. This effective communication encompasses departments such as Purchasing, Engineering, Manufacturing, Quality Control, and Finance. By fostering seamless coordination and collaboration among these departments, we ensure the efficient and successful execution of the project. Our approach guarantees that all quality and financial standards are met while precisely adhering to the specified project requirements.

### **Delivery and Site Coordination:**

During the delivery and site coordination phase, our dedicated Site Support Coordinator conducts frequent site visits to facilitate efficient project operations. They serve as a vital link between the customer and the Project Engineer, effectively communicating and conveying customer needs and requirements. This streamlined communication process ensures that we respond promptly to any changes or adjustments, ultimately leading to the successful and timely completion of the project. Our commitment to seamless coordination and open communication allows us to deliver projects that meet and exceed our customer's expectations.

### **Drawing, Design and Estimation:**

The department holds primary responsibility for the following major activities:

Thoroughly reviewing the customer's requirements, including specifications, drawings, and other relevant details, to prepare comprehensive quotations based on detailed estimates.

Collaborating closely with Sales, Engineering, Manufacturing, QA/QC, and Transportation departments to seek clarifications and obtain any additional information required during the estimation process.

Maintaining continuous liaison with the Supply Chain Management team to stay updated on raw material prices.

Internally coordinating with the Purchasing department to ensure accurate and up-to-date pricing for paint, special buyout items, and other subcontracted items.

By efficiently managing these critical activities, our department ensures a smooth and accurate estimating process, enabling effective project planning and seamless execution."

### **Material Planning:**

Our Material Planning process involves the procurement of raw materials for Structure production from both international and local markets. We source quality materials from countries such as Australia, Taiwan, China, Malaysia, India, and other selected regions. This strategic approach allows us to access a wide range of high-quality resources, ensuring that we deliver exceptional projects to our clients while maintaining stringent standards of material selection.

### **Engineering:**

At [Company Name], our Engineering services are built on a foundation of excellence in technology and strong engineering skills, which consistently deliver superior steel design and detailing services. Our dedicated team, proficient in various Engineering Software, empowers our clients to achieve the most economical and structurally efficient engineering solutions. With a focus on innovation and optimization, we provide high-quality designs that cater to the specific requirements of each project. From efficient project management to timely delivery, our Engineering services are committed to ensuring successful outcomes for our valued clients.

Software used for Analysis and Design

STAAD Pro - Structural analysis and design

Midas Civil & Gen- Structural Bridge analysis and design

RAM Connection, Idea Statica - Steel Connection Design

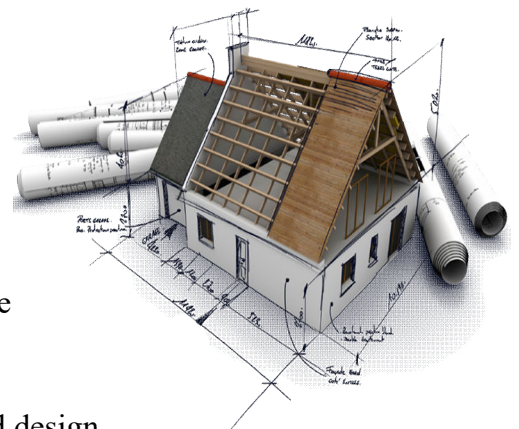
Acemos GEAR, CSI COLUMN - Section Design software

Geo5, PLAXIS, All Pile, Bentley Geo-Structural Analysis

CSI ETABS, CSI SAP2000, CSI SAFE, - 3D analysis and design

Microsoft Excel – Manual Section Design BOQ & MOQ.

Tekla, Revit- Three-Dimensional BIM Software



Auto CAD 2007 & 2022 - for working drawings

3D Studio Max, Photoshop - for perspective views

Codes followed in design:

Uniform Structure Codes – UBC 1994, IBC 2006/2009, ASCE 7-05

Building Code – BNBC 1993, BNBC 2006, BNBC 2016, AISC 05/10/16

ASTM, Karbi, MBME, Jamil Steel manuals

### **Manufacturing:**

We use the latest methods, technology and machines to ensure the highest levels of productivity, quality and delivery for customer satisfaction.

Planning

Preparation

Fabrication

Erection

Supply

Blasting

Painting

Shipment

Industrial Engineering (IE)



### **Quality Assurance and Control:**

At , we place a strong emphasis on Quality Assurance and Control. Our team consists of experienced and dedicated staff with a high caliber for carrying out inspections and testing in compliance with international Quality Standards. Our commitment to maintaining quality starts from the initial inquiry stage and extends throughout the entire project lifecycle.

From meeting contract specifications to handling project documents, conducting in-process quality inspections, and ensuring on-time delivery, we strive to provide a seamless and high-quality experience. Our ultimate goal is to erect the end product to the complete satisfaction of our clients. With stringent and meticulous quality practices, we guarantee the delivery of superior products and services that consistently meet and surpass industry standards.



## Conclusion:

has been operating in the diverse fields of Engineering for a significant period. Throughout this journey, we have achieved successful completion of numerous projects, including Apartments, Industrial Structures, and Cement Plants. Our commitment to excellence and dedication to meeting our clients' requirements have enabled us to deliver projects on time and to the utmost satisfaction of our valuable clients.

With a focus on quality assurance, innovative engineering solutions, and efficient project management, we have established a strong track record in the industry. Our experienced team and dedication to meeting international standards have been the driving force behind our success.

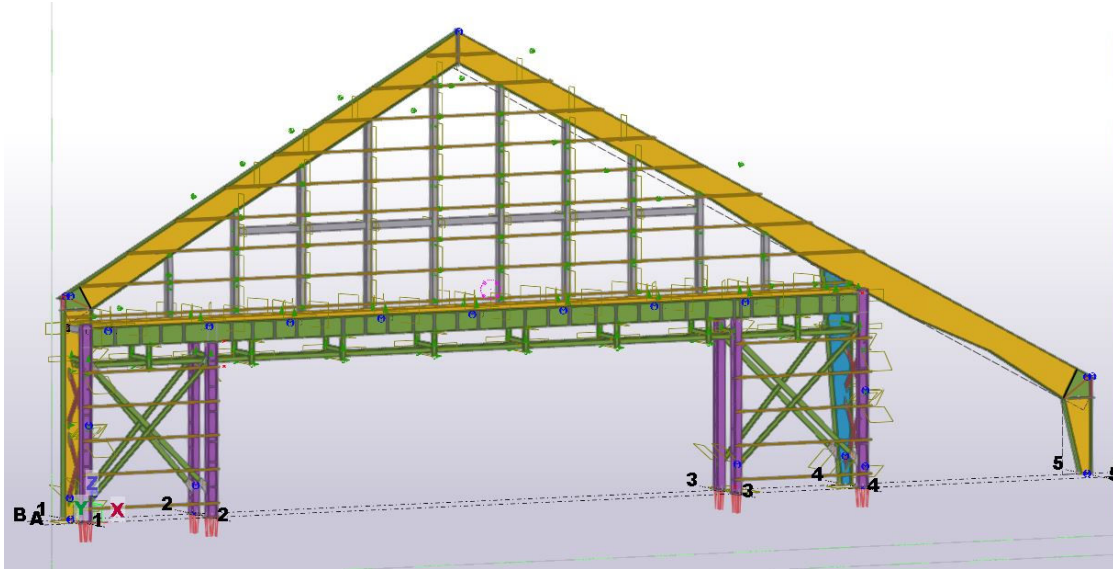
As we continue to grow and expand, we remain committed to providing top-notch engineering services and delivering projects that contribute to the advancement of infrastructure and construction. We sincerely thank our clients for their trust and support, and we look forward to embarking on more successful ventures together in the future.



**List of Completed Project:**

Sl	Company Name	Location	Project Type	Area/Size
01	Ocean Builders.	CTG, Air Force	Aircraft Hanger with Gate Steel Structure	70 MT / 1.5core
02	Dimond Cement	Isanagar, Kornofuli, Ctg	Six storied Cement Packing Factory Building Steel Structure	220MT / 4.5core
03	Barge Lake view	Rangamati	Resort Rcc & Steel Structure	100000sft / 12core
04	JH Group, JH Bangladesh	Savar, EPZ	Industrial, Printing Factory Steel Structure	220MT / 12core
05	Captic Power Gas Generator Building	Tangail	Industrial RCC Generator Building	7.5 core
06	Adri Knitwear Ltd.	Tengra bazar, Sreepur Gazipur	Wear House Industry	400000sft / 500MT / 20core

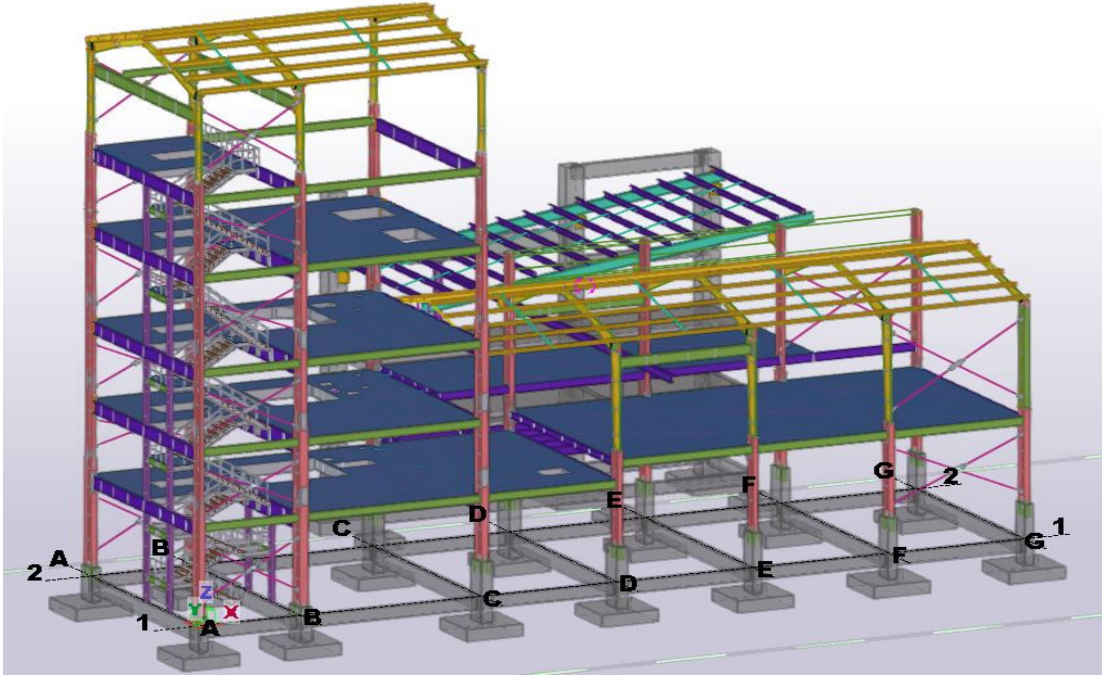
## PROJECT PICTURES



Hangar Gate Under GE (Air Force) at BAF Base, Chittagong.



Hangar Gate Under GE (Air Force) at BAF Base, Chittagong.



**Dimond Cement Packing Factory 04**



**Dimond Cement Packing Factory 04**





**Printing Factory, Saver EPZ**

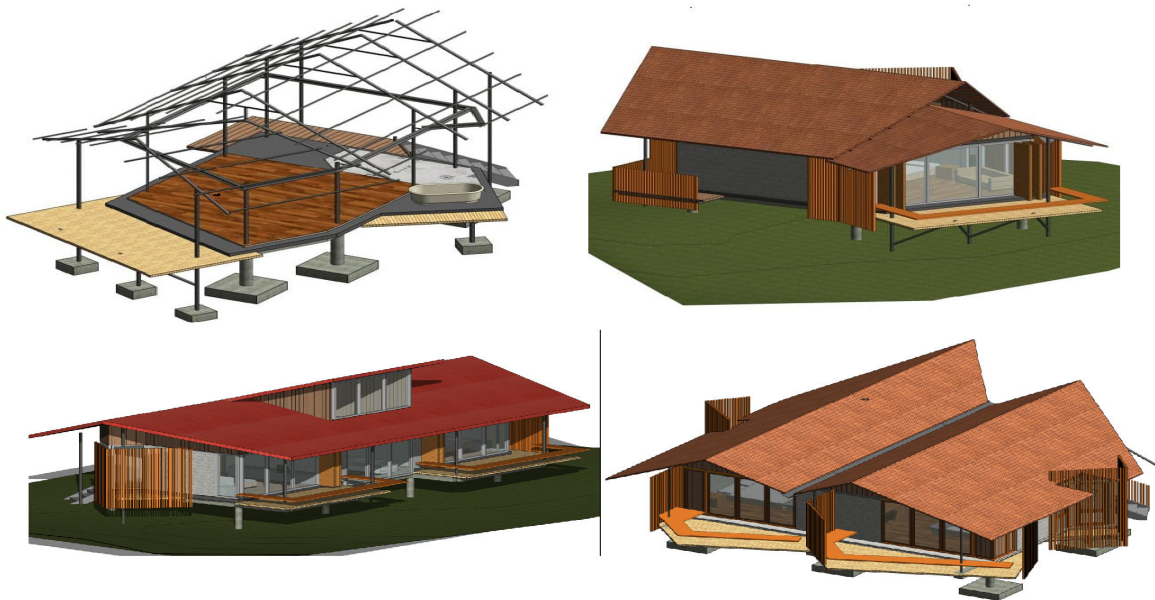


**Printing Factory, Saver EPZ**





**Bargi Lake View top Drone view with Master Plan**



**Bargi Lake View top Drone view few cortege**





**Runing Project: Adri Knitwear Ltd, Tengra bazar, Sreepur, Gazipur.**



**Runing Project: Adri Knitwear Ltd, Tengra bazar, Sreepur, Gazipur.**