

THE
Raymond
SHOP

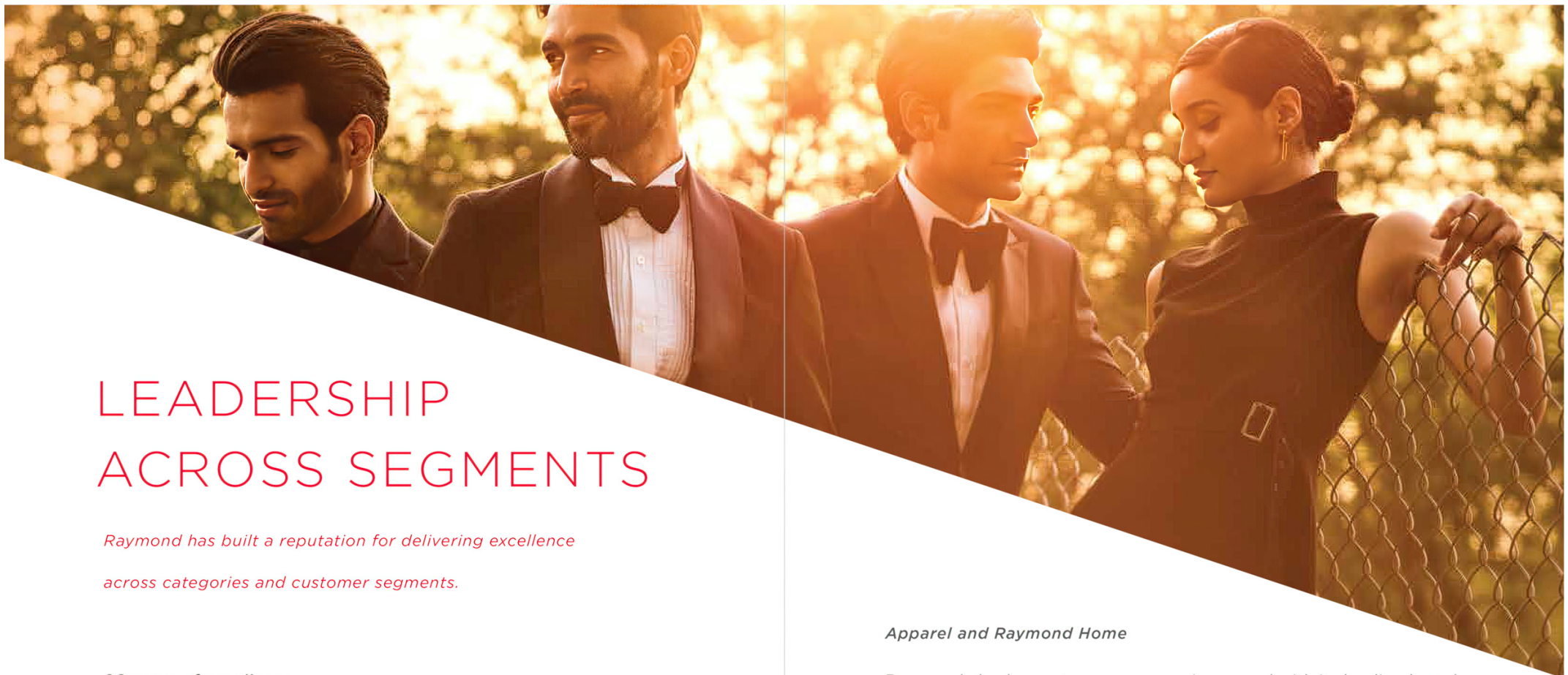
ADYAR



INSTITUTIONAL
BRAND SERVICES

CORPORATE STYLE BY
Raymond





LEADERSHIP ACROSS SEGMENTS

*Raymond has built a reputation for delivering excellence
across categories and customer segments.*

90 years of excellence

Nine decades, over 1100 exclusive stores, 13 manufacturing facilities in India and exports to more than 55 countries – Raymond is a powerhouse in textiles and apparel.

Made to Measure and Custom Tailoring

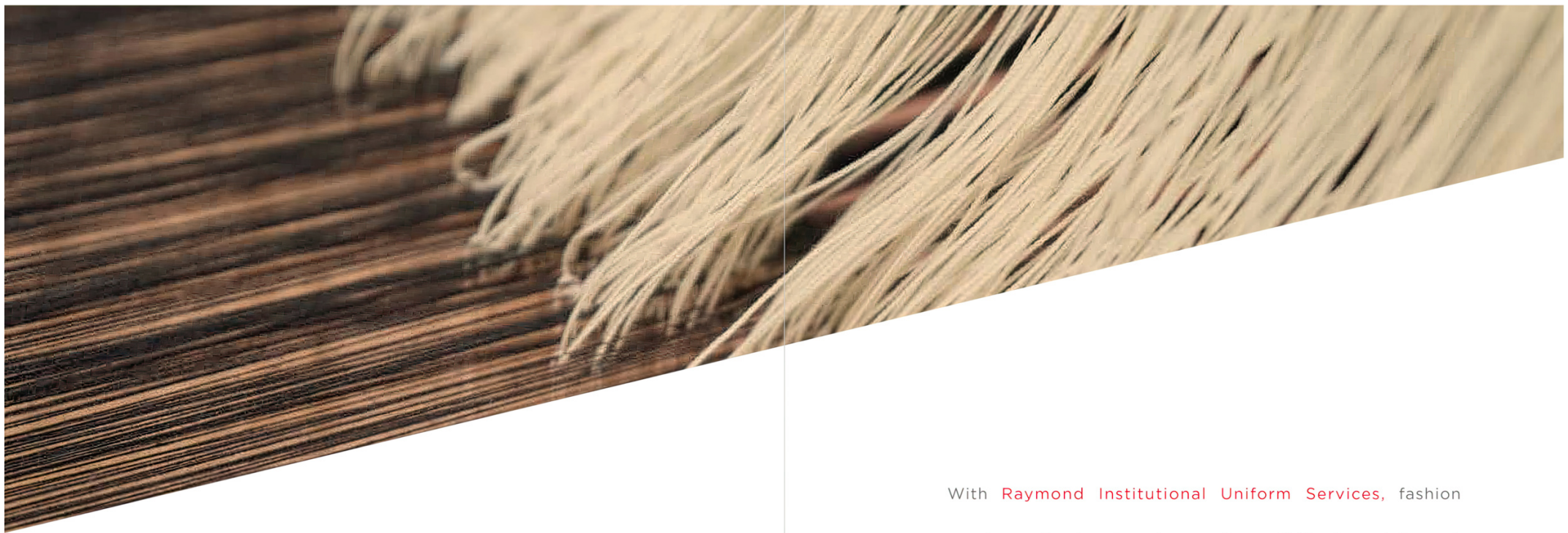
Crafted from fine fabrics by Raymond, Made to Measure personalised apparel and Custom Tailoring offer discerning gentlemen the choice of distinctive styles and perfect fits to make an individual statement.

Apparel and Raymond Home

Raymond also has a strong presence in apparel with its leading brands like Raymond Ready-to-Wear, Park Avenue, Parx, ColorPlus, Next Look and Ethnix. Raymond's presence in textiles also includes Raymond Home, India's leading home textile brand.

FMCG and Other Sectors

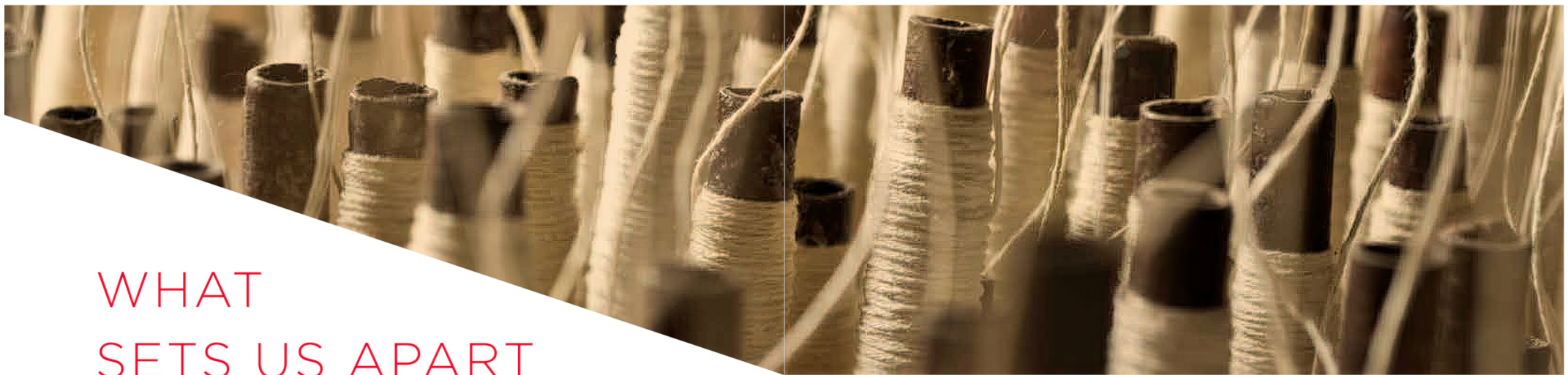
Raymond's diversified presence comprises FMCG with Park Avenue Personal Care and Kama Sutra Sexual Wellness; along with other sectors like hardware, tools and automotive components.



BE DISTINGUISHED WITH RAYMOND

*Creating an end-to-end solution for all your uniform
and work-wear needs*

With **Raymond Institutional Uniform Services**, fashion meets professionalism to create a distinctive statement for your corporate brand. We have channelled over nine decades of experience into creating an end-to-end solution for all your uniform and work-wear needs. With presence in 600 cities in India, we offer everything from readymade and personalised garments and accessories to the finest quality fabrics, and corporate gift sets customised to mirror your brand identity. Now get the same Raymond edge for your corporation with Raymond Institutional Uniform Services.



WHAT SETS US APART

Made to Measure

Innovation meets craftsmanship to create Made to Measure, a service that offers a wide range of fabrics and personalised styles options to choose from, for an ensemble that's measured to perfection.

Garmenting

Raymond is India's only men's fashion brand to feature three different tailoring makes as well as one of the leading exporters of men's tailored suits in the country.

Design

Our Italian designers, some of the most skilled in the industry, work closely with our Indian creative team to create the most elegant patterns and styles, some of which are exhibited at fashion shows in Paris.

Quality Assurance and Technical Services

We are a brand that stands for quality as much as excellence. In over 1100 of our exclusive stores, we ensure that each fabric goes through international grading systems.

Manufacturing Facilities

With 13 facilities in India, our manufacturing capabilities are nothing short of world-class. Raymond is the world's leading producer of worsted fabrics with a capacity of over 46 million metres.

Raymond Tailoring Initiative

Our brand mirrors the unparalleled skill and effort of our tailors and we take pride in honouring them with our 'Raymond Tailoring Initiative' – a CSR program that seeks to encourage a sense of foresight and entrepreneurship among our tailors.

AVIATION

It's been over a century since we took to the skies, but the romance of aviation refuses to fade. At Raymond, we offer uniforms made from the finest fabrics, tailor-made to capture this popular sentiment. Chic designs, wide range of colours, durable and innovative materials – it has all it takes to project the perfect mix of glamour and professionalism.

Recommended Fabric Specifications

SHIRTS Cotton Polyester 60/40, Polyester Cotton 65/35.

Weave: Plain weave, Dobby, Self Design and Matty.

TROUSERS & JACKETS Polyester Wool 65/35,

Polyester Viscose 65/35, Polyester Viscose Stretch.

Weave: Plain Weave, Matty, Twills, Pinstripes and Subtle Checks.

FINISHES Wrinkle-free, Anti-stain, Optical White, Quick Dry,

Stretch Comfort, Pliable, Machine Washable, Soil Release,

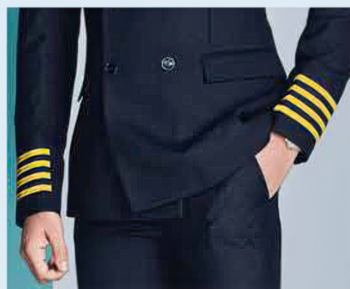
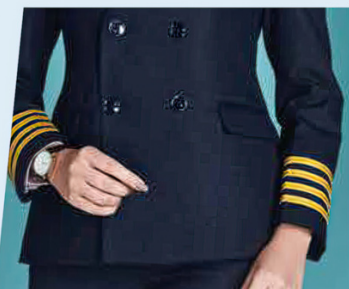
Hygiene, Anti-odour.



PILOT



Double-breasted Pilot's jacket with a peak collar, welt pockets and a six-button closure.



Standard Pilot cuff detailing.

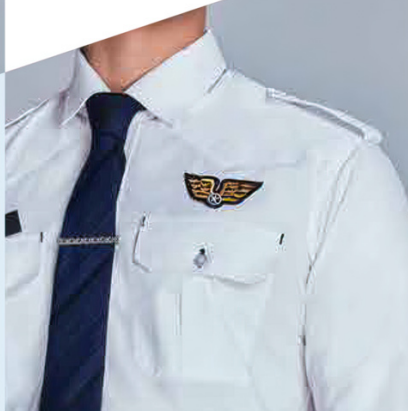


FEMALE & MALE

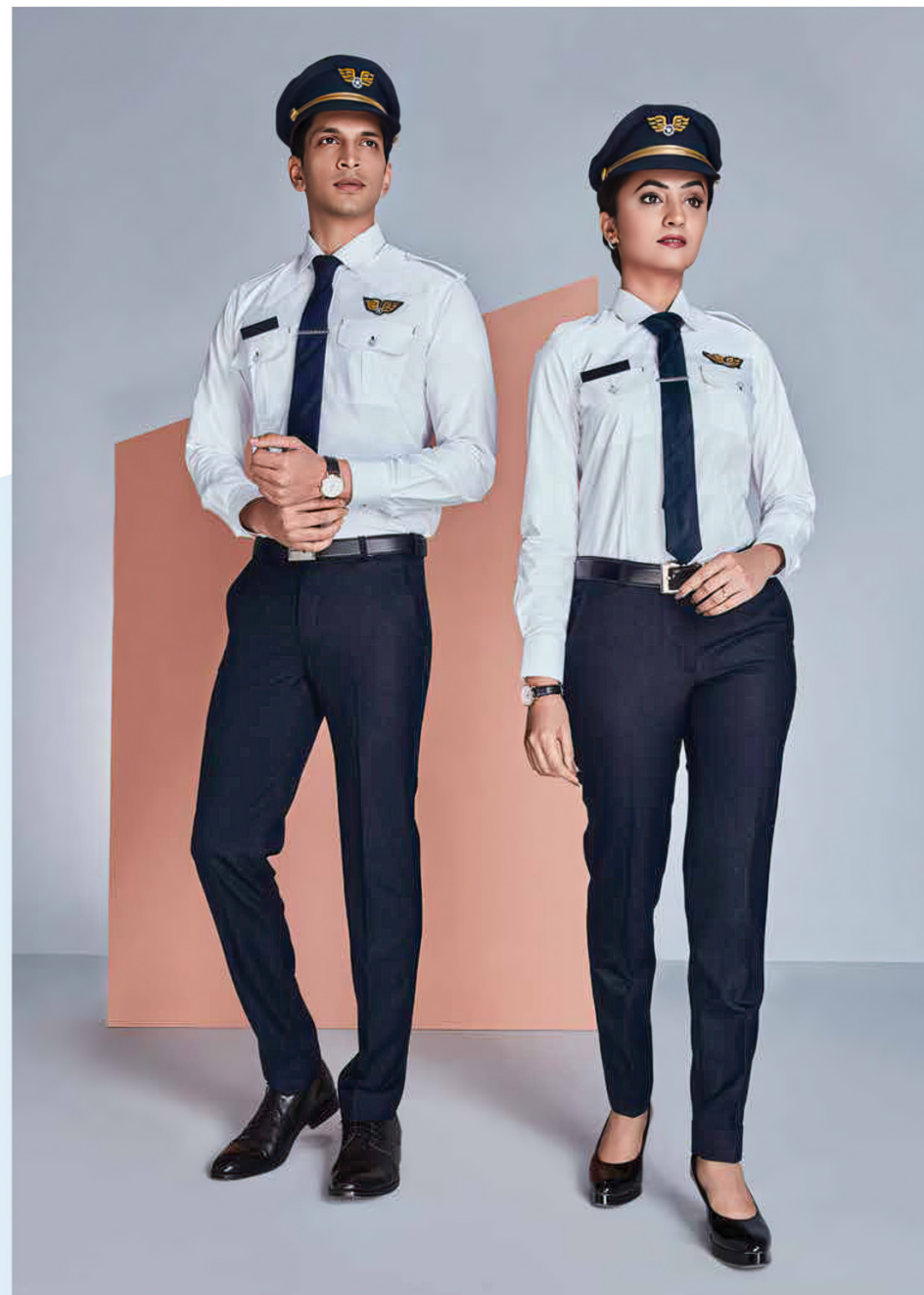
Jacket & Trouser - Sapphire: Polyester Wool 65/35 • *Shirt:* Polyester Cotton 65/35

PILOT

Women's Pilot shirt in dobby fabric, a narrow collar with contrast detailing on the inside, a western style yoke and regular flap pockets with a Pilot's pin.



Pilot's shirt in white dobby fabric, a regular collar, standard Pilot epaulettes, flap pockets with a single box pleat and a Pilot's badge pin. Navy detailing on the inside placket and collar.



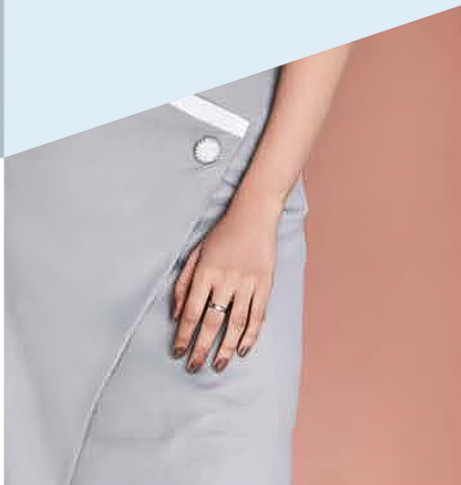
FEMALE & MALE

Shirt: Polyester Cotton 65/35 • *Trouser - Sapphire:* Polyester Wool 65/35

CABIN CREW



Two-tone Mandarin collar shirt, a welt pocket with contrast bartack detailing and contrast piping on the side panel.



Pencil skirt with an asymmetrical overlapping panel, contrast tipping, a single ring metal button and darts on the back.



FEMALE & MALE

Shirt: Cotton Polyester 65/35 • *Trouser - TechnoSmart:* Polyester Wool

CABIN CREW



Two-tone collar shirt with a concealed placket, single inverted box pleat detailing on elbow length sleeves and seam detailing for a tailored look.



MALE & FEMALE

Shirt: Cotton Polyester 65/35 • *Trouser - TechnoSmart:* Polyester Wool

CABIN CREW

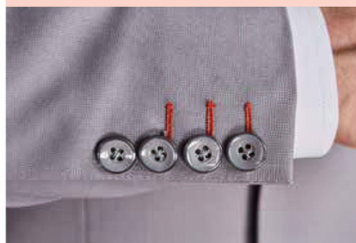


Single-breasted Steward's jacket with a notch collar and contrast mimosa lining.

- Flap pockets with seam detailing.



Asymmetrical jacket with an overlapping neckline, a three-button closure and princess seam detailing.



Contrast gauntlet cuff with contrast piping.



MALE & FEMALE

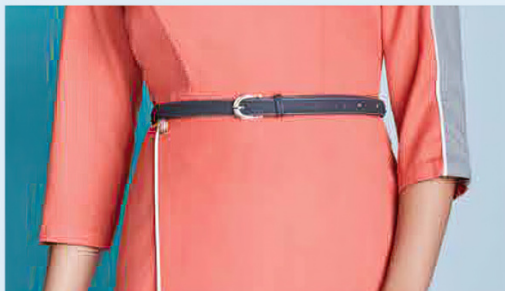
Jacket - TechnoSmart: Polyester Wool • Shirt: Cotton Polyester 65/35

Trouser - TechnoSmart: Polyester Wool

CABIN CREW



Front single-button overlap dress with a boat neck and a cut & sew panel on the sleeve and shoulder.

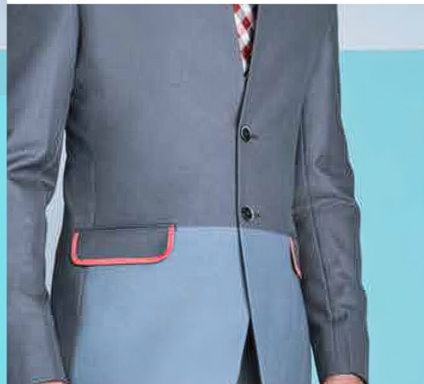


Dress - TechnoSmart: Polyester Wool

GROUND STAFF



Two-tone jacket with a flat inverted lapel and colour blocking. Two-button closure with cut & sew colour blocking, and flap pockets with contrast tipping details.



Women's single closure overlapping jacket with a rounded hem and contrast seam and colour detailing on the sleeves.



MALE & FEMALE

Jacket - Sapphire: Polyester Viscose • *Shirt:* Polyester Cotton 65/35
Trouser - Premium Trovine: Polyester Viscose

GROUND STAFF

Double-breasted, three-pocket vest
with four-button closure



Printed blouse with a French seam,
a contrasting Mandarin collar and cuffs.



Pleat detailing on the neckline, contrast piping
on the flyfront placket and regular sleeves with
slight gathers.



MALE Vest: Polyester Viscose • **Shirt:** Polyester Cotton 65/35 • **Trouser - Premium Trovine:** Polyester Viscose
FEMALE Shirt: Polyester Cotton 65/35 • **Trouser - Premium Trovine:** Polyester Viscose

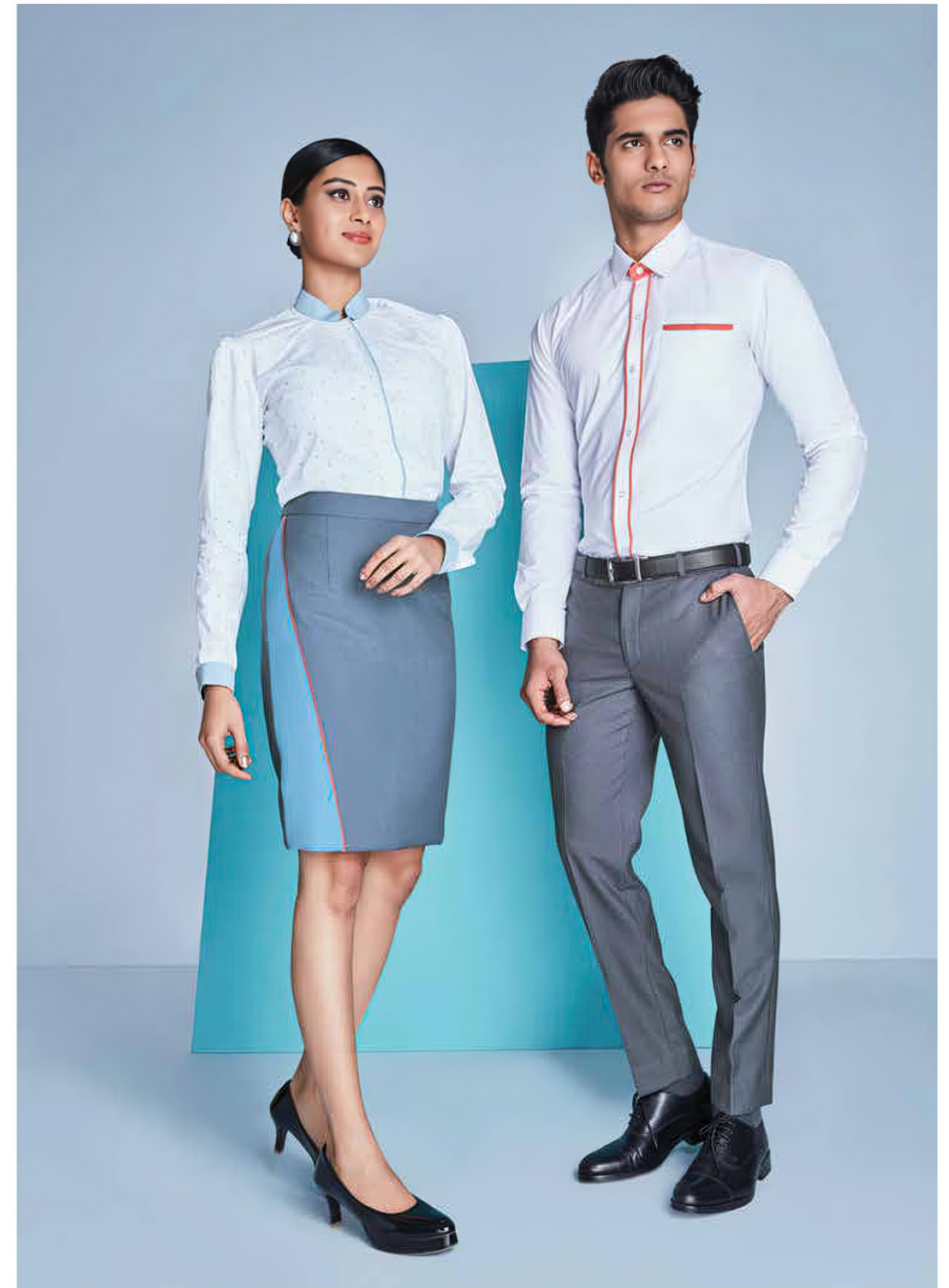
GROUND STAFF



Placket detail shirt with a classic collar and contrast detailing, a contrasting placket, a welt pocket with detailing and a western shoulder yoke.



Asymmetrical skirt with a blue cut & sew panel, mimosa piping and a back slit.



MALE & FEMALE

Shirt: Polyester Cotton 65/35 • *Skirt - Premium Trovine:* Polyester Viscose
Trouser - Premium Trovine: Polyester Viscose

LOADER



White and blue colour
block polo shirt with contrast
rib detailing on the collar and sleeves,
and a regular patch pocket.



T-Shirt: Polyester Cotton 65/35 • *Trouser - Super Trovine:* Polyester Viscose

HOSPITALITY

For an industry where presentation is king, Raymond offers personalised and aesthetically designed garments crafted from premium quality fabrics. We also understand that behind the glory of this business lie tough working conditions that take their toll on garments and hence we also offer a range of premium styles at a low cost.

Recommended Fabric Specifications

SHIRTS 100% Cotton, Cotton Polyester 60/40, Polyester Cotton 65/35.

Weave: Plain Weave, Dobby, Self Design and Matty.

TROUSERS & JACKETS Polyester Wool 65/35, Polyester Viscose 65/35, Polyester Viscose Stretch.

Weave: Plain Weave, Matty, Twills, Pinstripes and Subtle Checks.

FINISHES Wrinkle-free, Anti-stain, Optical White, Quick Dry, Water-repellent.



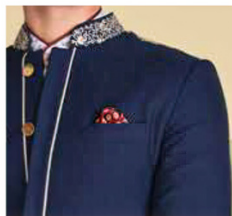
FRONT OFFICE



Scoop neck blouse with embroidery on neck and cuff.



Paisley jacquard vest with double-button closure, mandarin collar and embroidery detailing.



Full sleeve Bandhgala jacket with embroidery detailing and gold piping on the collar and shoulders, and Zari embroidery on the cuffs.



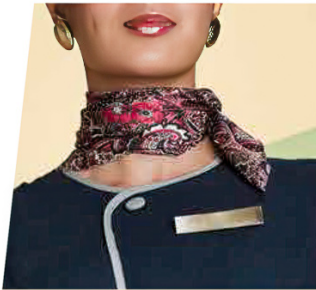
Full sleeve, printed shirt with a mandarin collar and a maroon concealed placket.



MALE & FEMALE

Shirt: Polyester Cotton 65/35 • Skirt - Premium Trovine: Polyester Viscose
Trousers - Premium Trovine: Polyester Viscose

FRONT OFFICE



Overlapping neckline
with a show button.



Tulip sleeves with
0.5" contrasting borders



Jacquard waist band.



Tunic – Premium Trovine: Polyester Viscose 65/35

FRONT OFFICE

Two-button, single-breasted jacket with a notch collar and a narrow lapel with white piping on the edge, and a breast pocket.

Five-button, single-breasted vest.



Full sleeve, button-down collar shirt with a contrasting inner collar and twill tape on the button placket.



Full sleeve, short jacket with a tulip hemline, a Mandarin collar with white piping on the edges, and dull gold buttons.



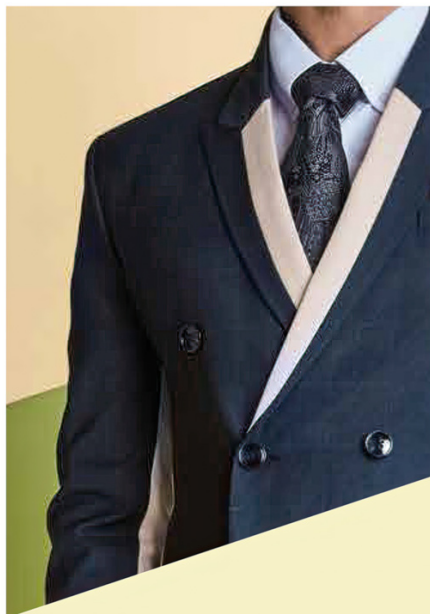
Full sleeve, long tunic in printed fabric with a jewel neckline.



MALE Suit - Vintage: Polyester Viscose 65/35 • **Shirt:** Polyester Cotton 65/35
FEMALE Blazer - La Nouva: Polyester Viscose 65/35 • **Tunic:** 100% Printed Rayon • **Leggings:** Cotton Lycra

FRONT OFFICE

6/4 Double-breasted jacket
with box pleats at the back,
and beige panels on the peak lapel,
side boxes and undersleeves.



Slim fit, full sleeve shirt with a rounded collar
and a contrasting inner band.

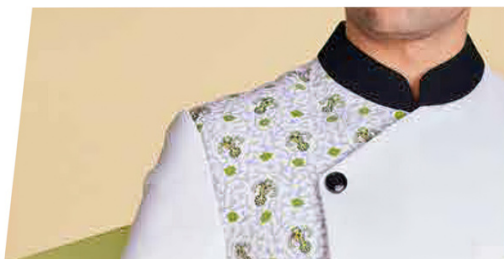
-

Flat front, narrow bottom trousers.

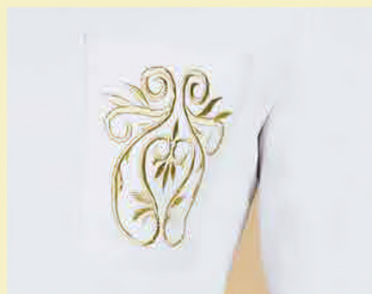


Suit - Fascination: Polyester Viscose 65/35 • *Shirt:* Polyester Cotton 65/35

CHEF



Full sleeve chefcoat with jacquard panels and a black Mandarin collar



Chest pocket with embroidery.



Black turn-up cuffs and welt pockets.

- Straight cut, loose fit trousers.



Suit - *Super Trovine*; Polyester Viscose 65/35

CHEF



Mandarin collar chefcoat with black piping, an asymmetric panel with black buttons, and black welt pockets and cuffs.

Straight cut, loose fit trousers.



Suit - Super Trovine; Polyester Viscose 65/35

HOUSEKEEPING



Asymmetric, front heavy tunic with jacquard panels and an overlapping neckline with fabric buttons. Elbow length sleeves with jacquard borders and mustard piping.

A line front bib opened dress with elbow length sleeves, overlapping Jacquard cuffs, side slits and a jacquard Mandarin collar with a 'V' placket neckline.



Jacquard bib with button closure, mustard piping and parallel pintucks on the front skirt panel.



MALE Shirt & Trouser - Super Trovine: Polyester Viscose 65/35
FEMALE Tunic - Super Trovine: Polyester Viscose 65/35

STEWARD



Six-button, double-breasted vest with 0.5" contrasting border on the neckline, embroidery detailing on the armhole, and dull gold buttons.

- Full sleeve, slim fit dobby shirt with contrast detailing on the cuffs and inner band.



Short apron with contrasting waistbelt, side patch detailing and cross pockets. Velcro at the back.



Single-breasted vest with a Mandarin collar and contrast piping, embroidery detailing on the armhole, and dull gold buttons.

- Puff sleeve, slim fit dobby shirt with contrast detailing on the cuffs and inner band.



Apron contrast detailing and velcro at the back.



MALE & FEMALE

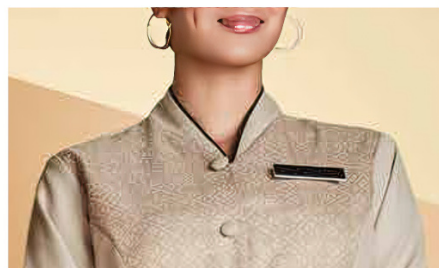
Jacket - Sapphire: Polyester Wool • *Apron - Super Trovine:* Polyester Viscose 65/35
Trouser - Premium Trovine • Shirt: Polyester Cotton 65/35



Symmetrical front tunic with contrasting panels and a Mandarin collar with contrast piping on the border.
A contrasting front yoke with a jacquard panel and oriental-style button closure

Short sleeves with contrasting dark 0.5" borders.

Trouser with an elasticated waist and cross pockets.



Jacquard front tunic, an ascending collar in contrast with dark corners and contrasting side panels.

Straight fit, flat waistband trouser with cross pockets.

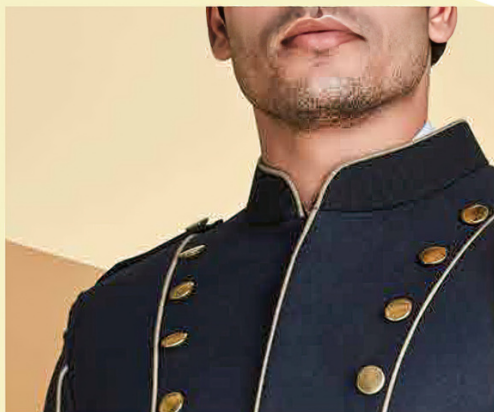
Elbow length sleeves with slits & borders, and fabric buttons with an extended front placket for closure.



MALE & FEMALE

Jacket - Sapphire: Polyester Wool • *Apron - Super Trovine:* Polyester Viscose 65/35
Trouser - Premium Trovine • Shirt: Polyester Cotton 65/35

DOORMAN



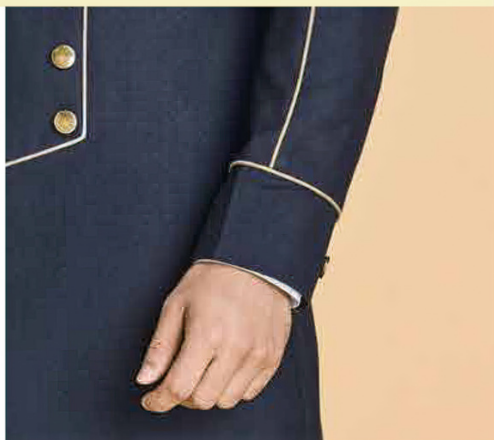
Full sleeve, comfort fit, longline jacket with concealed buttons, a black Mandarin collar with gold piping and dull gold buttons.

-

Full sleeve, comfort fit shirt with a Mandarin collar.

-

Straight fit, flat front trousers with an adjustable waist.



Jacket & Trouser - Super Trovine: Polyester Viscose 65/35

MEDICAL

Professionalism has never had a greater role to play than in the Medical industry. Along with saving lives, medical personnel are constantly striving to find a balance between efficiency, and being the ultimate caregiver. Raymond also strives for the same with its products – to find the right balance between functionality, hygiene and sophistication.

Recommended Fabric Specifications

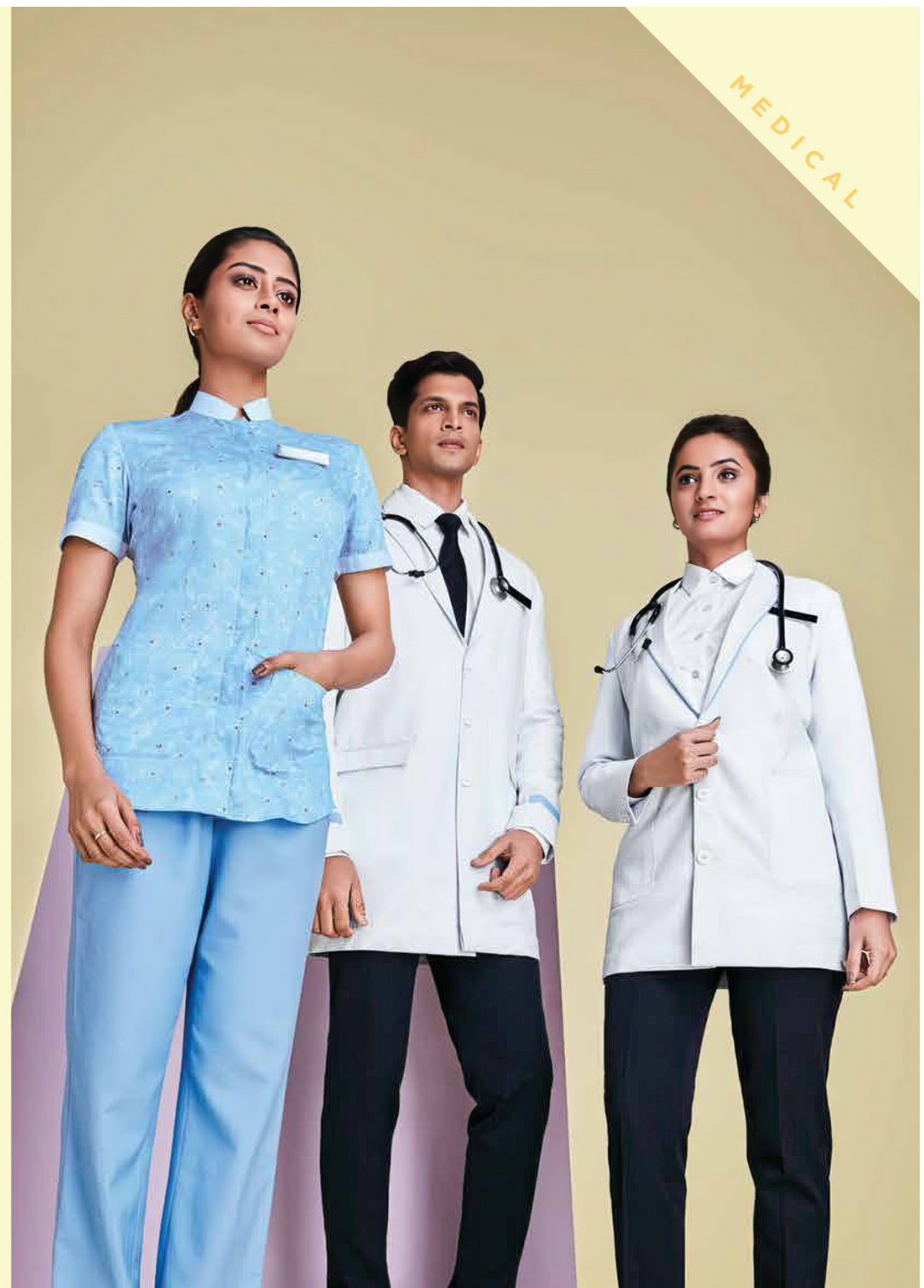
SHIRTS 100% Cotton, Cotton Polyester 60/40, Polyester Cotton 65/35.

Weave: Plain Weave, Matty and Twills.

TROUSERS & JACKETS 100% Cotton, Polyester Viscose 65/35.

Weave: Plain Weave, Matty, Twills and Pinstripes.

FINISHES Wrinkle-free, Anti-stain, Optical White, Quick Dry, Machine Washable, Soil Release, Hygiene, Anti-odour, Anti-microbial.



RECEPTIONIST



Mandarin collar shirt with contrasting shoulder panels, a French placket, patch pockets with a monogram, and contrast tipping on the cuff.



Mandarin collar, printed shirt with a contrasting collar and a concealed button placket, and contrasting cuffs.



Patch pockets with bartack detailing.

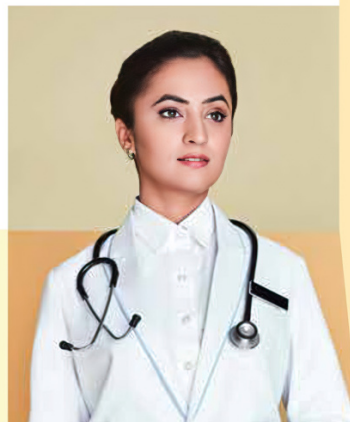


MALE Shirt - Trovine: Polyester Viscose 65/35 • **Trouser - Trovine:** Polyester Viscose 65/35
FEMALE Shirt: Printed Polyester Cotton 65/35 • **Trouser - Trovine:** Polyester Viscose 65/35

DOCTOR



Single-breasted, notch collar long coat with plastic buttons and a back slit.



Single-breasted, peak collar long coat with tipping on the lapel and dart detailing on the back.



Thick piping on the sleeves and a welt pocket with contrast tipping.



Patch pocket detailing



MALE & FEMALE

Jacket - Admiral Preference: Polyester Viscose 70/30 • *Trouser - Super Trovine:* Polyester Viscose 65/35
Shirt: Polyester Cotton 65/35

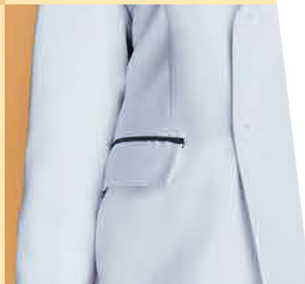
DOCTOR



Double-breasted, notch collar long coat with a monogram on the chest, patch pockets with contrast twill tipping and dart detailing on the back.



Double-breasted, notch collar long coat, tipping on the welt pockets, with flaps and a slit on the back for a tailored fit.



MALE & FEMALE

Jacket - Admiral Preference: Polyester Viscose 70/30 • *Trouser - Super Trovine:* Polyester Viscose 65/35
Shirt: Polyester Cotton 65/35

DOCTOR



Contrasting, princess panel surgical scrubs with a V neck, with Navy piping, a monogram on the chest and cut & sew side panels.



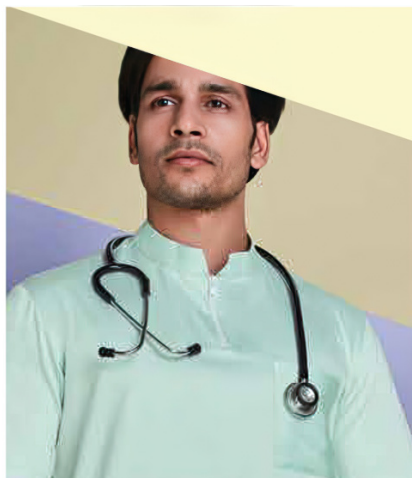
Panelled surgical scrubs with a V neck with Navy piping, a patch pocket with a monogram and cut & sew side panels.



MALE & FEMALE

Jacket - Admiral Preference: Polyester Viscose 70/30 • *Trouser - Super Trovine:* Polyester Viscose 65/35
Shirt: Polyester Cotton 65/35

NURSE



Half sleeve scrubs with a soft Mandarin collar with an exposed zipper on the front yoke panel, a square patch pocket on the front, and angled & layered patch pockets on the sides.



Half sleeve scrubs with a V neck, with contrast tipping and a single pocket on the front, angled & layered patch pockets on the sides, and fisheye darts on the back.



MALE & FEMALE

Shirt & Trouser - Trovine: Polyester Viscose 65/35

NURSE

Half sleeved scrubs with contrast yoke panelling, a V neck with double stitch detailing on the yoke and neck.



Layered pockets with contrasting colours, with sectioning and stitch detailing continued on back.



Half sleeve, comfort fit scrubs with contrasting shoulder panels, a V neck with contrast flat piping and layered utility pockets.



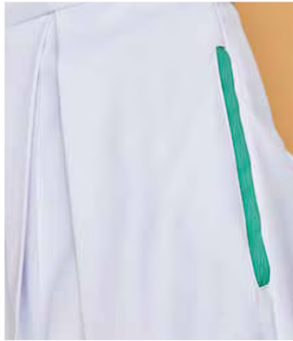
Patch pockets on the sides with contrasting colour layers.



MALE & FEMALE

Shirt & Trouser - Trovine: Polyester Viscose 65/35

NURSE

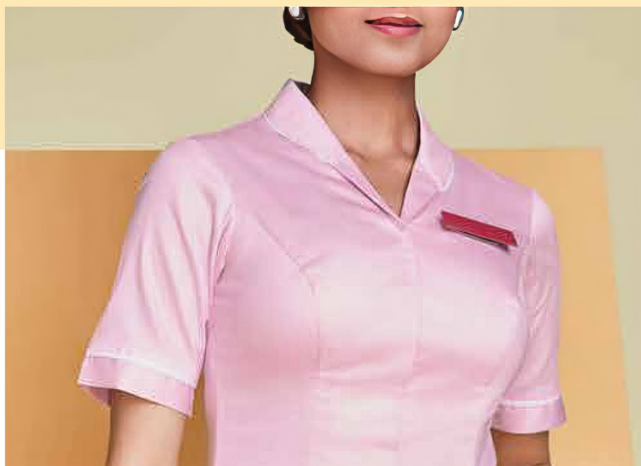


Nurse tunic with a contrasting Peter-pan collar, puff sleeves with slits, a single pleat & release, and inseam welt pockets.



Tunic - Admiral Preference: Polyester Viscose 70/30

NURSE



Long nurse tunic with a rounded collar, with contrast piping and sleeves with white twill tape.



Slit welt pockets, a concealed placket that opens into side slits, and fisheye dart detailing on the back for a tailored fit.



Tunic - Admiral Preference: Polyester Viscose 70/30

MATERNITY



Relaxed fit, printed maternity gown with a V neck.

Buttoned back closure.



Dress: 100% Printed Cotton

MATERNITY



Half sleeve, printed gown with soft fold over collar, with a tie up, an open front and a monogram on the chest.



Dress: 100% Printed Cotton

MATERNITY



Half sleeve, printed gown with soft fold over collar, with a tie up, an open front and a monogram on the chest.



Dress: 100% Printed Cotton

INDUSTRIAL

The industrial sector constitutes some of the most demanding work environments. Personnel battle everyday to be productive under these conditions while maintaining a professional level of discipline. To augment this productivity, Raymond offers industrial work wear that is both durable and comfortable, with a hint of refinement.

Recommended Fabric Specifications

SHIRTS 100% Cotton, Cotton Polyester 60/40, Polyester Cotton 65/35.

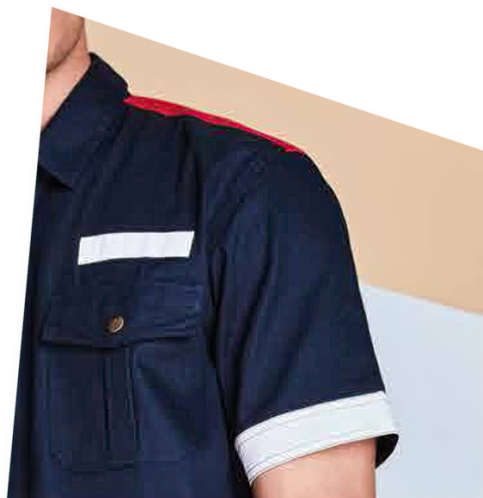
Weave: Plain Weave, Matty and Twills.

TROUSERS & JACKETS 100% Cotton, Polyester Viscose 65/35

Weave: Plain weave, Matty, Twills and Ripstop.

FINISHES Wrinkle-free, Anti-stain, Quick Dry, Machine Washable, Soil Release, Hygiene, Anti-odour, Anti-microbial, UV Protection, Oil Resistant, Anti-static, Heat Regulation.



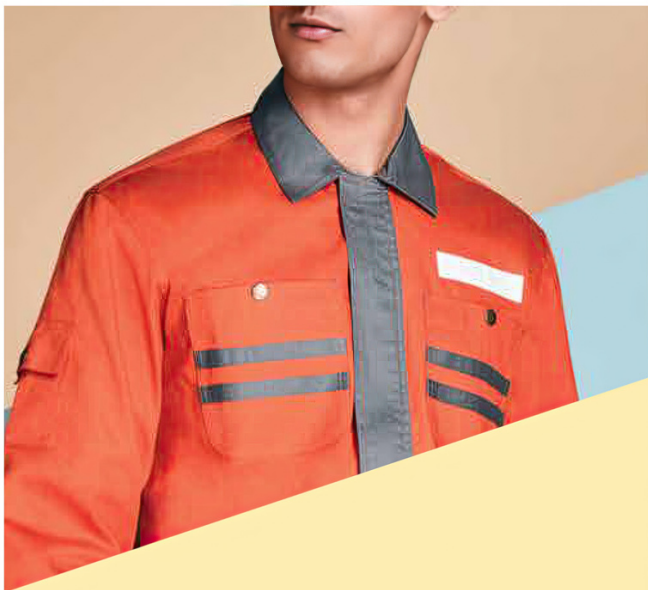


Heavy shirt with contrasting shoulder panels, a zip closure, a regular collar, box pleat detailing on the contrasting back yoke and patch pockets, and contrasting cuffs.



Shirt & Trousers: 100% Cotton Twill

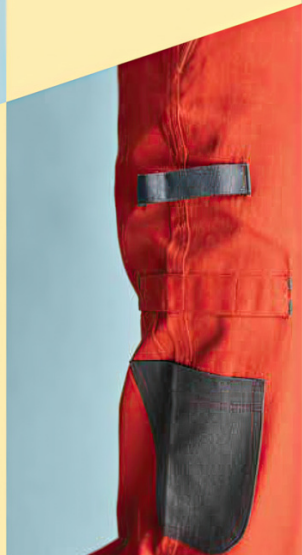
Regular collar heavy shirt with a contrasting collar and a front flap, and Velcro closure. Flat button pockets with twill tape detailing, bartack detailing on the sleeve and sleeve pockets, and box pleats on the back.



Patch pocket on the left thigh with zip closure and front seam detailing.



Six-pocket cargo trousers with zip pockets, a contrasting hammer loop, contrast detailing on the right thigh pocket with loops.



Shirt & Trousers: 100% Cotton Twill

Seven-pocket cargo trousers with pocket flaps, contrasting loops and a welt pocket on the right, contrasting pockets with cut & sew detailing on the back, patch pockets with box pleat and contrasting twill tab on the left, and buckles on the waist.



Regular collar heavy shirt with Velcro closure, contrasting shoulder panel with cut & sew detailing and epaulettes, patch pockets with inverted pleats, and Velcro cuffs.



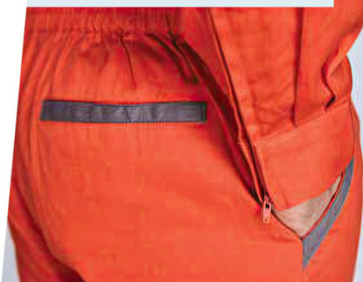
Shirt & Trouser: Polyester Cotton Twill 65/35



Coverall with reflective tape detailing on the shoulders and calves, and twill tape detailing on the patch and cross pockets.



Reflective tape detailing on the back.



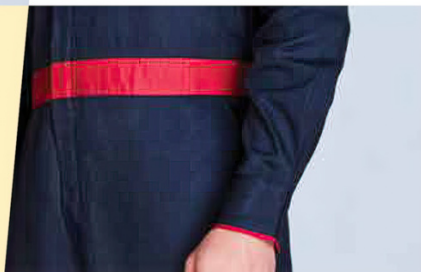
Concealed zippers on the cuffs, and twill detailing on the back pockets.



Coverall: 100% Cotton Twill



Coverall with a regular shirt collar and a contrasting inner collar band, patch pockets with box pleats.

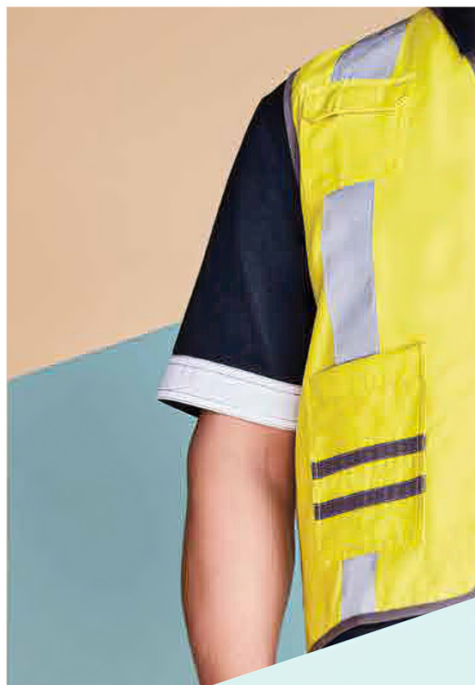


Contrasting elasticated waistband and regular cuffs with contrast bartack detailing.

Reflective tape on the back yoke and calves



Coverall: 100% Cotton Twill



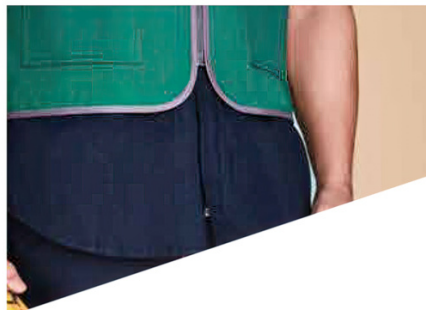
Three-pocket utility vest with a zip closure, square patch pockets, reflective tape and Velcro back fastening.



Shirt & Trouser: Cotton Polyester 60/40 • *Vest:* Polyester Viscose



Utility vest with reflective tape patch pockets and Velcro, a flap patch pocket on the chest.



Reflective tape detailing and Velcro back fastening.



Shirt & Trouser: Cotton Polyester 60/40 • Vest: Polyester Viscose

Sleeve pocket with a
contrasting twill tab.



Navy jacket with a boiler suit collar,
patch pockets, zip closure with
contrast stitching details.

Ribbed detailing and
contrasting welt pockets.



Jacket: 100% Cotton Twill



Built-up neck jacket with contrast detailing and patch pockets.



Zip pocket on the sleeve with panel detailing and zip patch pockets on the sides.



Jacket: 100% Cotton Twill

CORPORATE

Start-up or a multinational, what an employee wears is an integral part of its visual identity. At Raymond, we have woven innovation and professionalism into every fabric to deliver garments of superior quality in contemporary styles. Ready-to-wear with the option to personalise, our garments are designed to turn every employee into a brand ambassador.

Recommended Fabric Specifications

SHIRTS 100% Cotton, Cotton Polyester 60/40, Polyester Cotton 65/35, Polyester Viscose 65/35.

Weave: Plain weave, Matty, Twill.

TROUSERS & JACKETS 100% Cotton, Polyester Viscose 65/35.

Weave: Plain Weave, Matty, Twills and Pinstripes.

FINISHES Wrinkle-free, Anti-stain, Optical White, Quick Dry, Machine Washable, Anti-perspiration.





Double-breasted jacket with a regular peak collar and contrast lining, flap pockets with seam detailing, a four-button closure and contrasting bartacks and seams.



Double-breasted jacket with a notch collar jacket, a six-button closure, flap pockets with tonal contrast piping and welt pockets with tonal contrast.

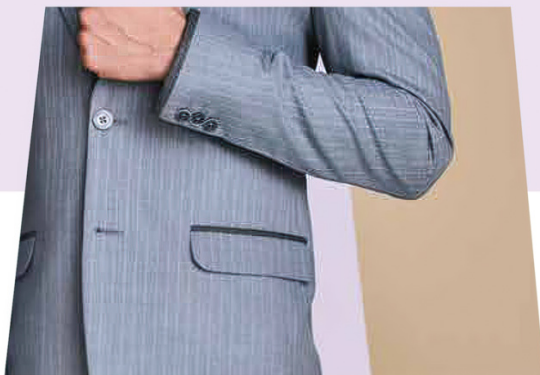


FEMALE & MALE

Shirt: Polyester Cotton 65/35 • *Trouser & Jacket - Sterling:* 65/35 Polyester Viscose



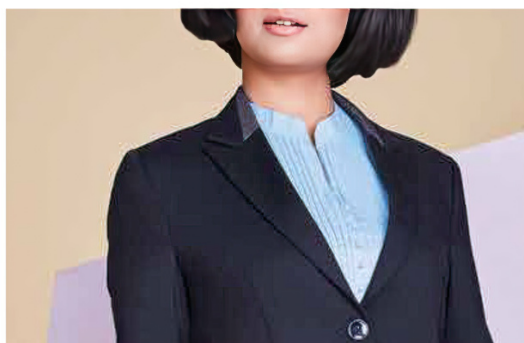
Single-breasted jacket with a notch collar and two-button closure.



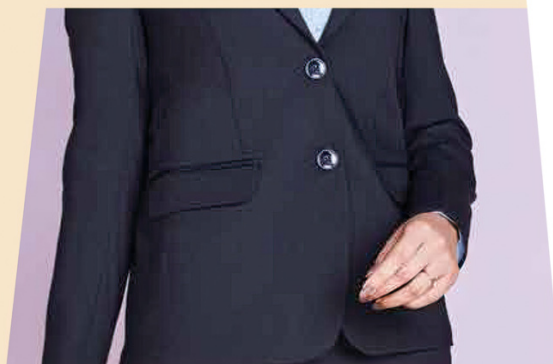
Flap pockets with contrast jet detailing and tipping on the sleeves.



Shirt: Polyester Cotton 65/35 • *Trouser & Jacket - Endura:* Polyester Viscose



Notch collar jacket with contrasting inserts and two-button closure.



Flap pockets and contrast detailing on the inner sleeve placket.

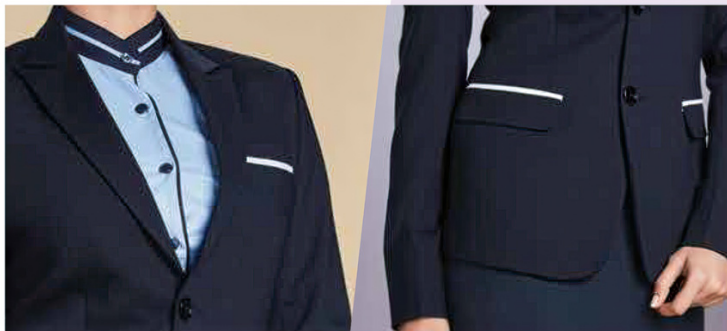


Shirt: Polyester Cotton 65/35 • *Blazer & Trouser:* Polyester Viscose



Single-breasted jacket with a peak collar with contrasting inserts and two-button closure.

Tonal welt pockets and contrast tipping on the sleeves.



Two-button, single-breasted jacket with a peak collar and a contrasting inner sleeve placket.

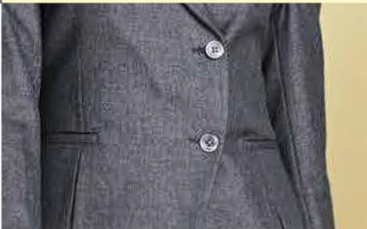
Contrasting jet pocket on the front, and flap pockets with a contrasting jet on the sides.



FEMALE *Shirt:* Polyester Cotton 65/35 • *Jacket & Skirt:* Polyester Viscose Stretch 65/35
MALE *Shirt:* Polyester Cotton 65/35 • *Jacket & Trousers:* Polyester Viscose Stretch 65/35



Double-breasted jacket with a peak collar, with contrast lining and Glen checks, an overlapping two-button closure, jet pockets and inverted box pleats.



Single-breasted jacket with a peak collar, with contrasting inserts, two-button closure, tonal welt pockets and contrast tipping on the sleeves.

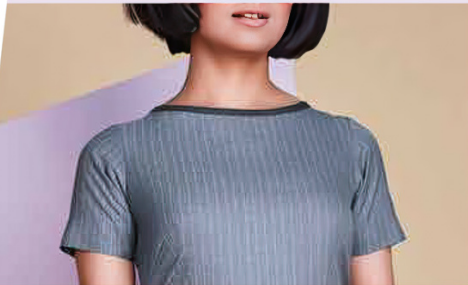


FEMALE & MALE

Blouse/Shirt: Polyester Cotton 65/35 • *Skirt/Trouser - Sterling:* Polyester Viscose 65/35
Jacket - Sterling: Polyester Viscose 65/35



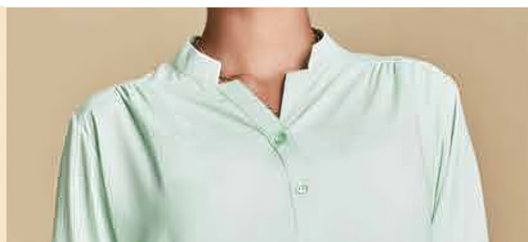
Double-breasted vest with four-button closure, flap pockets, seam detailing and darts on the back.



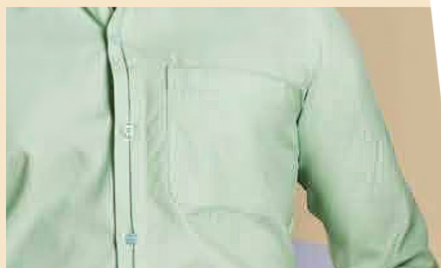
Half sleeve dress with a boat neckline, with contrast piping and a cascade on the waistline.



MALE Shirt: Polyester Cotton 65/35 • **Trouser & Vest - Endura:** Polyester Viscose
FEMALE Dress - Endura: Polyester Viscose



Blouse with
a V neck,
shoulder pleating
and contrast
cuff detailing.

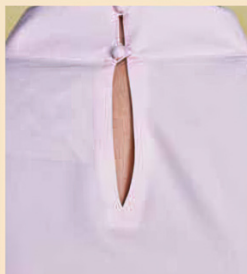


Gingham shirt with a classic collar
and contrast tipping
on the placket and cuffs.



MALE Shirt: Polyester Cotton 65/35 • **Trouser - Endura:** Polyester Viscose
FEMALE Shirt: 100% Polyester Crepe • **Trouser - Endura:** Polyester Viscose

Built-up neck blouse with
a cascade and three-button
cuff detailing.



A keyhole on the back with
single-button closure.



Birdseye fabric shirt with a spread collar.



FEMALE Shirt: 100% Polyester Crepe • **Trouser - Vintage:** Polyester Viscose
MALE Shirt: Polyester Cotton 65/35 • **Trouser - Vintage:** Polyester Viscose



Shirt with a classic spread collar with contrast detailing on the placket and contrast tipping on the pocket.

Thin detailing on the cuff



Shirt: Polyester Cotton 65/35 • *Trouser & Jacket - Endura:* Polyester Viscose



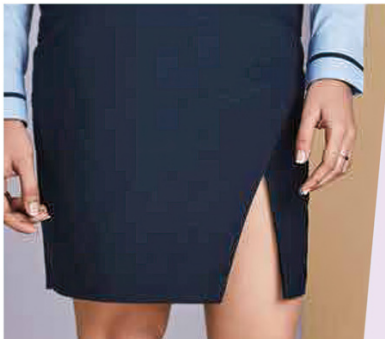
Mandarin collar blouse with pin tuck detailing, slight gathers on the sleeves and soft cuffs.



Shirt: Polyester Cotton 65/35 • *Trouser:* Polyester Viscose 65/35



Slim fit, Oxford shirt with a Mandarin collar, with contrast twill tape detailing, contrast tipping on the placket and rounded cuffs with bartack detailing.



Asymmetrical skirt with pleat detailing, a front slit and darts on the back.

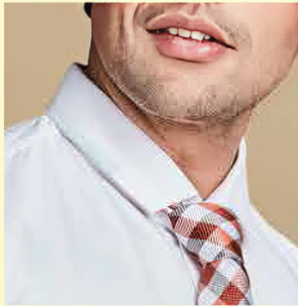


Slim fit, Oxford fabric shirt with a spread collar, with contrast detailing, a welt pocket with contrast detailing and an inverted pleat placket.



FEMALE & MALE

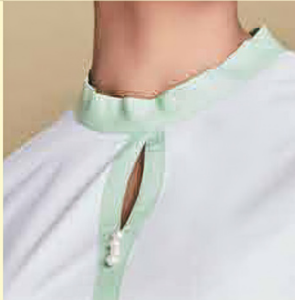
Shirt: Polyester Cotton 65/35 • *Skirt/Trouser:* Polyester Viscose 65/35



Slim fit, Oxford fabric shirt with a spread collar, with contrast detailing, a welt pocket with contrast detailing and an inverted pleat placket.



Blouse with a contrasting built-up collar, a keyhole, faux buttons and slight gathers on the sleeves.

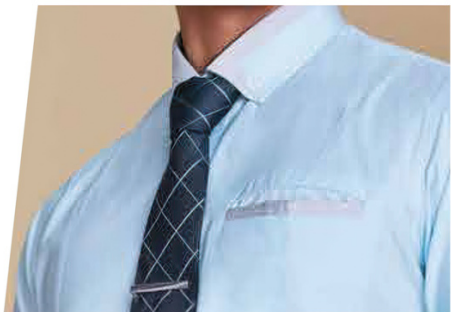


Wrap over skirt with a three-button closure and darts on the back.



MALE & FEMALE

Shirt/Blouse: Polyester Cotton 65/35 • Trousers/Skirt: Polyester Viscose 65/35



Squared off collar shirt with contrast detailing on the collar and the inner sleeve placket, a welt pocket and shoulder seam detailing.



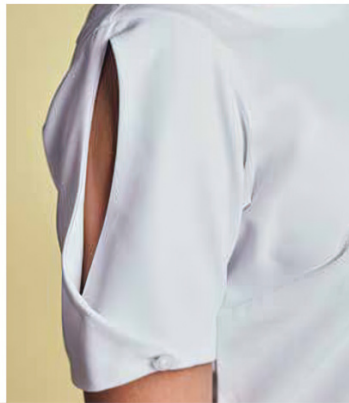
Half sleeve dress with a boat neckline, with contrast piping and a cascade on the waistline.



FEMALE Tunic - Endura: Polyester Viscose
MALE Shirt: Polyester Cotton 65/35 • **Trouser - Endura:** Polyester Viscose



Buttons on the back.



Overlapping sleeves with single-button detailing. Blouse with a boat neck, with mitering on the collar.



Asymmetrical skirt with gathers and single-button closure.



Slim fit shirt with a regular soft collar, with contrast piping and an inner collar.



FEMALE (L) *Shirt - Printed Crepe:* Polyester Cotton 65/35 • *Trouser - Sterling:* Polyester Viscose 65/35

FEMALE (R) *Shirt:* Polyester Cotton 65/35 • *Skirt - Sterling:* Polyester Viscose 65/35

AVIATION TESTIMONIALS



VINOD KUMAR

Operations Commander, ARFF, Delhi International Airport Ltd

"It is indeed my pleasure to share my testimonial on behalf of Airport Rescue & Firefighting Department of Delhi International Airport Ltd which is an entity of GMR group. We are taking all our uniform stuff from Raymond for many years. My experience working with Raymond has been very pleasant. When working with a brand like Raymond, all your requirements are taken care of. The prompt action, personal attention and unparalleled product quality are aspects that I particularly appreciate. Raymond will be our go-to solution provider for all future corporate requirements."

SUBHASH KHANDELWAL

General Manager (Procurement), SpiceJet Limited



"I have had a very satisfying experience with Raymond and am inspired by their philosophy in customer service. We have worked on numerous projects and have completed them successfully. The quality of uniforms received and the high service levels are commendable. We look forward to a long business relationship with Raymond."

INDUSTRIAL TESTIMONIALS

SHAMARESH MISHRA

Vedanta Ltd.



"I have been getting very good feedback from the employees who have used the shirts supplied by Raymond. Especially the quality and fit are exactly as per our requirement."

CORPORATE TESTIMONIALS

SARFRAZ

Head Visual Merchandiser, Titan Co. Ltd.



"From design to development, and piloting our new look at our flagship store, Team Raymond turned it around so quickly and efficiently. No other brand could be as reliable as they are with the quality and service. I vouch for Raymond for future projects as well."

MANISH TREHAN

AGM, Marketing, Aristo Pharma



"We have recently purchased the annual gifts for the sales-representatives and sales managers from Raymond and we have received a favourable feedback for the same.

The quality of apparel received was very good and has received good reviews across the spectrum. The level of professionalism and customer centricity shown by you and your authorized service provider has been reassuring. We look forward to a continued association with Raymond."

ABHA KUJUR

Plant HR Head, PepsiCo India



"This is the first time that the PepsiCo (Beverage factory in Roha Raigad) employees have ordered for sweaters from Raymond Apparel Ltd. We got Parx sweaters in Navy Blue shade. The quality of the product has been greatly appreciated by the employees (both workmen and management). The shade matched the uniform shade perfectly and the fitting is also as per requirement. Employees are looking forward to ordering more products related to office purposes in future."

NIRMALKUMAR PATIL

Manager, Administration & Security, CEAT Limited



"Raymond as a brand has always stood for excellence and trust. Product quality has been consistently good, backed by the quick response time of the sales team. I strongly recommend Raymond for all corporate uniforms. Always makes you feel like the complete man."

ANANTHRAM SHETTY

**Purchasing Supervisor,
Global Supply Network Division, Caterpillar Inc.**



"We had purchased white shirts from Raymond for the employees. The Raymond team demonstrated a very good understanding of the requirement. Multiple options were provided to meet the demand. The team has had an active communication plan backed by data. Quality of samples and final consignment received was as per our requirement and expectation. There has been an immediate response on product dispatch and consistent follow-up. Over-all, product received has been great value for money."

ANAND MUNDADA

Divisional Manager, Force Motors



"We placed an order of 6000 T-shirts from Raymond. The quality of products coming from Raymond is of high standards and very satisfying"

B. MAHENDER

Commercial Head, Andhra Unit, Asian Paints



"Purchased shirts and combo packs from Raymond. The product is very good. The material was delivered as per the commitment. Overall feedback is extremely good."

PRIVATE SECTOR CLIENTS

CORPORATE

Automobile

Hero MotoCorp, Force Motors, Maruti Arena, Volkswagen, JK Tyre, Apollo Tyre, Maruti Nexa, Gulf Oil, Fiat Motors, Tata Motors, Bajaj Motors, Elgi Compressors, GKN Driveline, JLR, Skoda, Volvo, Force Motors

Pharma & FMCG

Corona Pharma, FDC Pharma, Mahindra Retail, Zydus Healthcare, Alkem Pharma, Microlabs, Sun Pharma, Unichem, IPCA, Equitas Small Finance Bank, HUL, Pepsico, Helios, Torrent, Pfizer, Cadilla Pharma, Himalaya Drug Company, FDC Pharma-2, Dabur, Indoco Remedies, Abott, Galderma Pharma

Manufacturing

Usha Martin, Tata Steel, Vedanta Limited (Aluminium & Power), Amul, Nerolac, L&T, Asian Paints, Tata Power, Akzo Nobel, JK Cement, Saint Gobain, RAMCO, CG Power, Pidilite, Titan

AVIATION

IndiGo, Jet Airways, Delhi International Airport, SpiceJet

HOSPITALITY & WHITE GOODS

Taj Hotels, Daikin, Godrej & Boyce

PUBLIC SECTOR CLIENTS

CORPORATE

Shriram Group, RBI, MIDC, NABARD, Shree Shyam Auto, Karnataka Antibiotics, NALCO, Century Cement, Mazagon Dock Shipbuilders Limited, Madras Fertilizers Limited, Bharat Dynamics Limited

Miscellaneous

Indian Army, APSRTC (Andhra Pradesh State Road Transport Corporation), Kolkata Police, Mumbai Fire Brigade, Pimpri Chinchwad Municipal Corp, Institute of Management Technology Ghaziabad, HP Police, Officers Training Academy, VEL Tech University, Chennai Police, Dogra & Jatt Regiment, Thane Municipal Corp, Himachal Road Transport Corp, Delhi Cantonment Board, Jawaharlal Nehru Port Trust, Odisha Police, Tirupati Temple

INDUSTRIAL

IOCL Chennai, ONGC, KRIBHCO, Central Electricity Supply Utility of Odisha, Southern Electricity Supply Company of Odisha, Hindustan Petroleum Corporation Limited, North Eastern Electricity Supply Company of Odisha (NESCO), Nuclear Fuel Complex, LNG Petronet, NPCIL, Odisha Mining Corp, IOCL, Dept of Water Resources

HOSPITALITY & WHITE GOODS

Madhya Pradesh Tourism