



AL REEF GROUP **SPACE FRAME WORKS**

COMPANY PROFILE



AL REEF STAR LIMITED COMPANY



Company Overview

Al Reef Group (ARG) is a leading Saudi manufacturer and contractor specializing in high-performance steel structures and innovative Space frame systems. Headquartered in [Riyadh, Saudi Arabia], we combine cutting-edge engineering, Local expertise, and international quality standards to deliver turnkey solutions for mega-projects across the GCC.

✓ Key Highlights:

🏭 In-house fabrication facility with [X] tons/year production capacity.

🏠 SBC-compliant designs for Saudi Arabia's harsh climate (heat, sand, humidity)

🚀 End-to-end services: Engineering, fabrication, installation, and maintenance



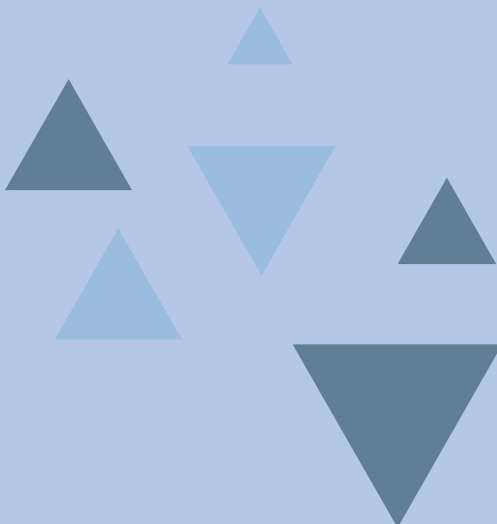
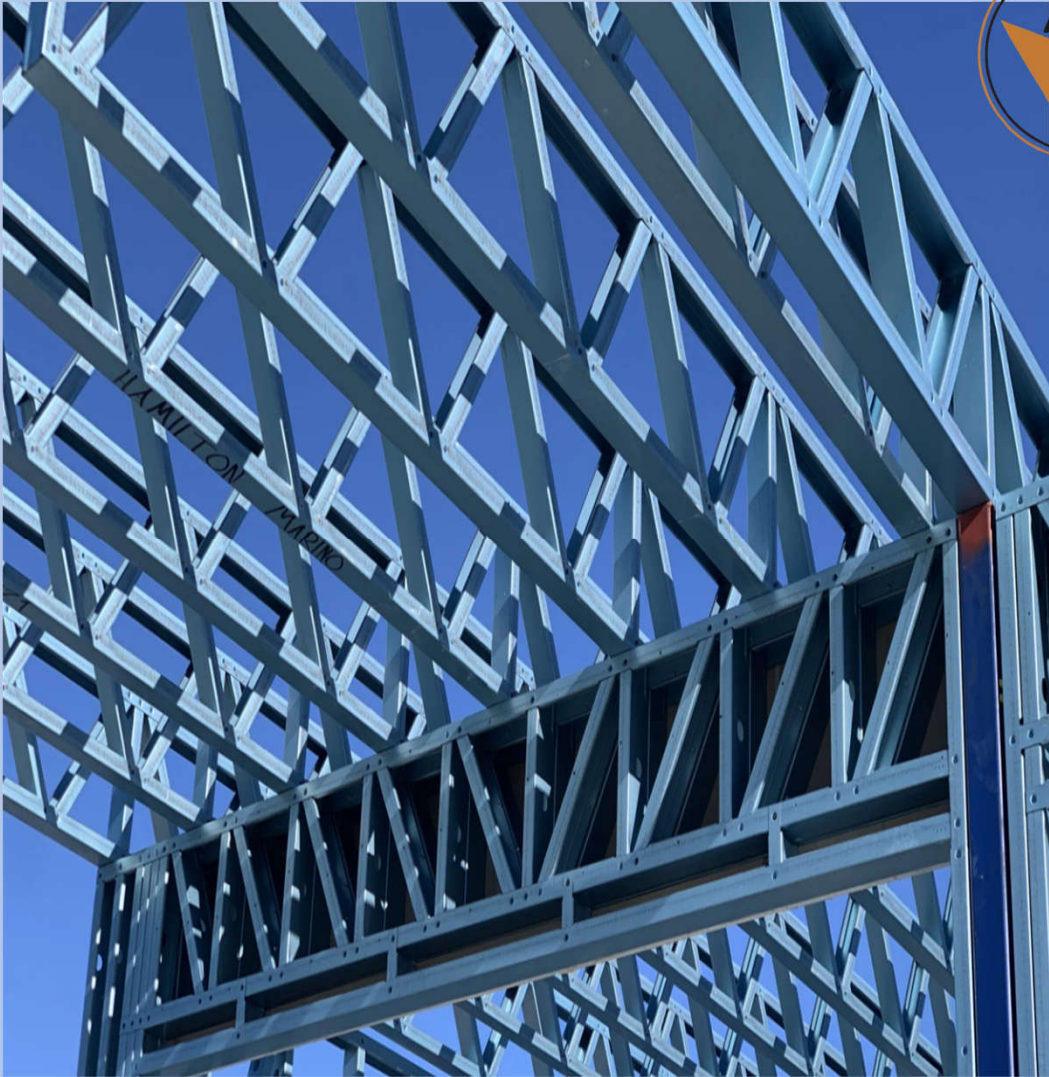
INTRODUCTION

ARG was established in 2021 as a investment firm specialized in the fields of Civil, structural , Architectural ,electro-mechanical works, HVAC, Plumbing, Fire Fighting Electrical power and low current System complete Supply ,Installation and renovation works, irrigation system and landscaping works, in addition of construction equipment's rental services. Since then AL REEF has proven reliability in fulfilling its commitment toward the clients in both private and public sectors. AL REEF had participated with some of the most visible and well-known companies in Saudi Arabia in execution of their major projects such as School Projects, Residential and Commercial Complexes, construction, Rest houses, Irrigation and Landscaping designing and execution, Installation of Fire Fighting and electrical power and low current system. In this regard, we have served clients in their construction needs, maintenance, and technical support.





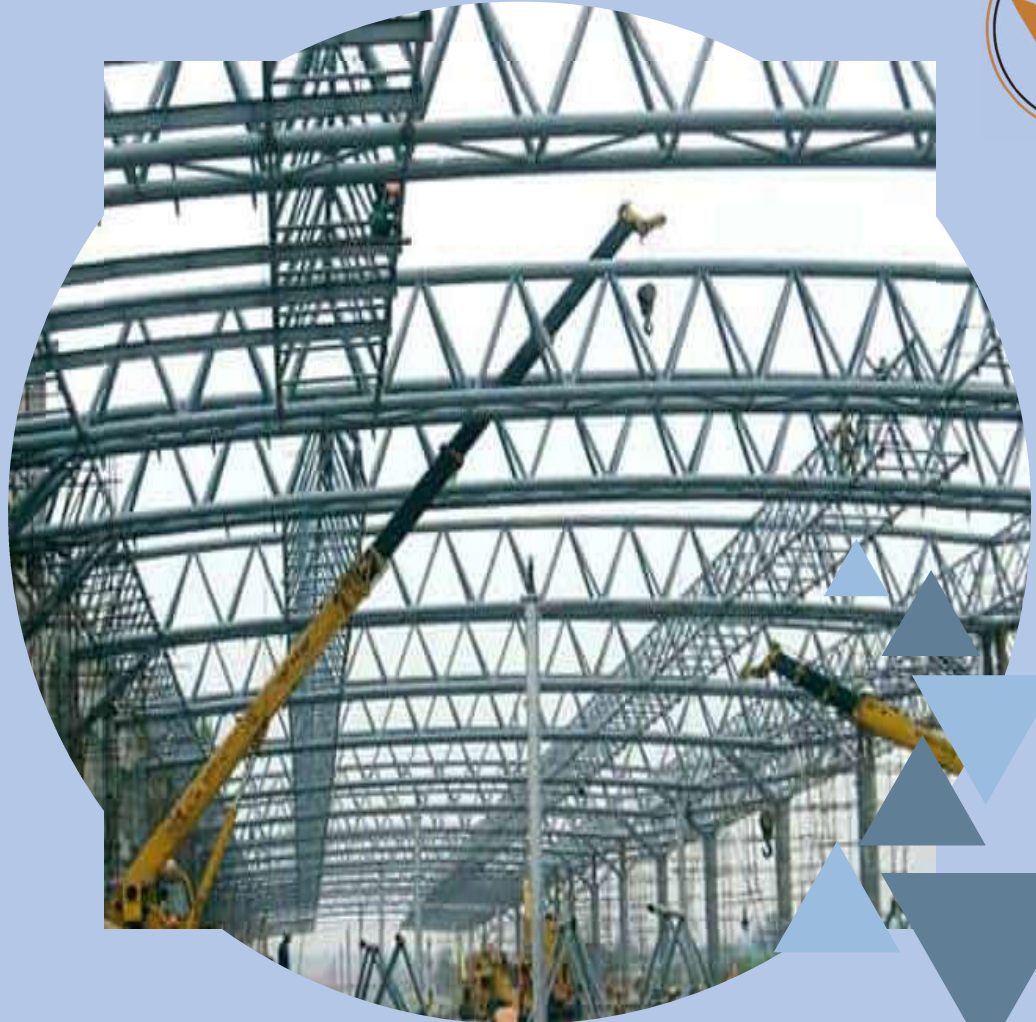
We have 100+ employees of various professions on our regular payroll, who are providing their best services to the clients in all fields of building construction. The firm's outstanding achievements in the construction fields have reached through the relentless efforts exerted by its highly qualified work force that are continuing to provide clients with top quality services.





ARG is a space frame manufacturing company based in Saudi Arabia, delivering high- quality, cost-effective structural solutions for industrial, commercial, and infrastructure projects. With advanced manufacturing facilities and a team of skilled engineers, we specialize in:

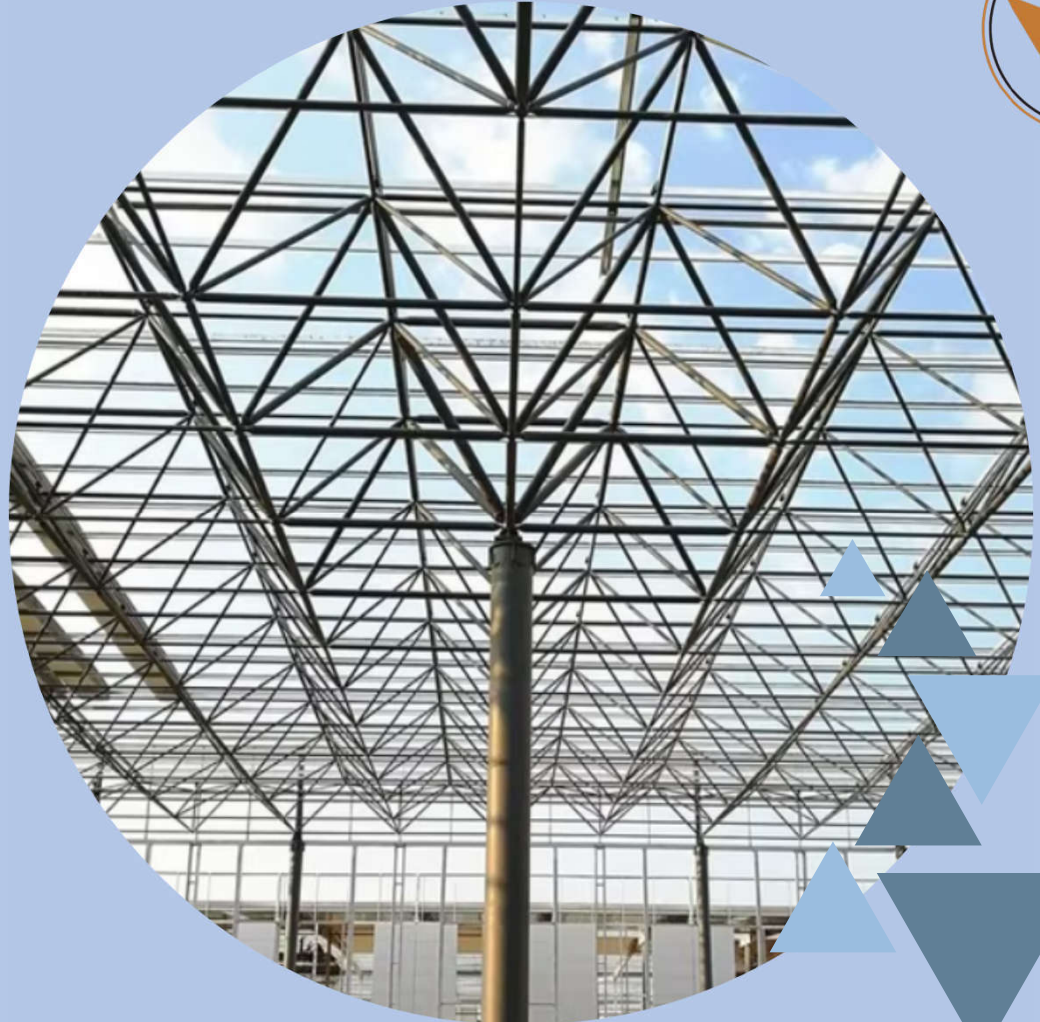
- ✓ **Custom Steel Fabrication** – Beams, columns, and heavy structures compliant with Saudi Building Code (SBC).
- ✓ **Space Frame Systems** – Lightweight, high-strength designs for stadiums, airports, warehouses, and canopies.
- ✓ **Corrosion- Resistant Materials** – Galvanized, aluminum, and stainless steel options for Saudi's harsh climate.
- ✓ **End-to-End Services** – From design & engineering to fabrication, installation, and maintenance. Backed by ISO certification and partnerships with top contractors, we combine German/European engineering standards with local expertise to ensure durability, safety, and cost efficiency. Key Markets: Industrial Sheds & Warehouses Mega Sports Venues Airport Terminals Oil & Gas Infrastructure



SPACE FRAME DIVISION



A space frame, also known as a 3Dtruss, is a rigid, light weight, and truss-like structure made up of interlocking struts in a geometric pattern. These structures are known for their strength and ability to span large areas with minimal interior support, making them suitable for various architectural and engineering applications. Key characteristics and features of space frames: Truss-like structure: Space frames utilize the inherent strength of triangles to distribute loads efficiently. Lightweight and rigid: The geometry of the interlocking struts provides a strong and stable structure while remaining relatively lightweight. Large spans: Space frames can span vast areas with few interior supports, making them ideal for large structures like stadiums, airports, and exhibition halls. Strength and stability: The triangular shape and interconnected struts ensure that loads are distributed evenly, resulting in high structural integrity.



SPACE FRAME DIVISION



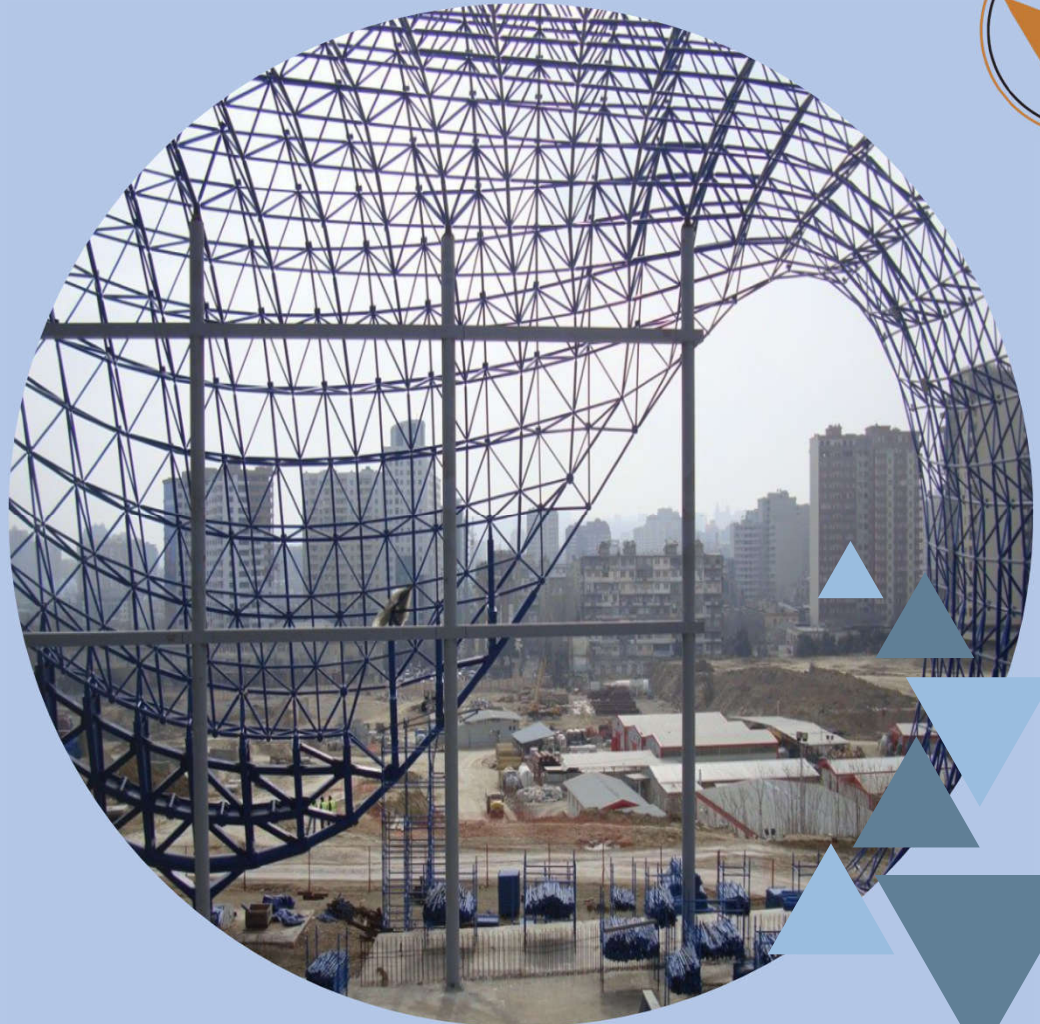
Versatile: Space frames can be adapted to various shapes and sizes, allowing for creative architectural designs. **Materials:** Common materials used in space frame construction include steel and aluminum. **Applications:** Space frames are used in a wide range of applications, including: **Buildings:** stadiums, airports, exhibition halls, shopping malls **Bridges** **Aerospace:** satellites and spacecraft **Industrial equipment**



SUPPORT SERVICES



ARG , a leading name in Engineering support services, was established in 2015. Over 10 years of dedicated service across the Middle East. We boast of successfully sourcing and placing of candidates with the most reputed Multi Our competence in taking a long term view of a position has generated rich dividends for employers as well as employees. Our strength stands in our team of Engineers comprising of first-rate talent from varied industry sectors mostly from India & Philippines with in Depth domain knowledge of the various spectrums of engineering covering civil, mechanical, electrical, instrumentation, designing and commissioning. Our deliverance of quality service has earned us broad recognition in the industry with a long list of satisfied clientele which include engineering giants. AL REEF success is reflected in the rich legacy of such prestigious clients and professionals who rely on the firm for the most appropriate fitments. With proven excellence, state of the art training facilities, and professional expertise, AL REEF has emerged precisely as an inevitable partner for many reputed Clients in their pursuit of engineering support beyond expectation. AL REEF services enable the client to focus on core operations rather than getting bogged down by processes. With the strong backing of a diverse panel of versatile professionals, AL REEF stands apart from the crowd.



MANPOWER



AL REEF have total of 100+ Highly Qualified, Experienced, well trained and multinational workforce to undertake any challenging task. The class A performance of employees is at its best an assets and is always bringing pride to the company. It is the commitment of AL REEF to pursue economical goals within the context of industrial peace and productivity. Here is a list in Alphabetical order as per Job Category.



HEALTH, SAFETY & ENVIRONMENT



The AL REEF approach to project safety is a simple one; we ask that all employees and personnel place "Safety First." Safety is a team project. No one person alone can ensure a safe environment. Because it is a collaborative effort, AL REEF involves every individual in making safety the top jobsite priority. Through education and careful supervision of employees, AL REEF demonstrates to all the numerous benefits of having a safe project. We utilize the most comprehensive and groundbreaking technology to make this task as simple as possible. Through this technology, Safety Education becomes a fun and easily understood process for all. AL REEF institutes incentives and recognition programs that emphasize the rewards to all employees for taking safety seriously. With this approach, AL REEF has had an outstanding safety record, and we will continue to put "Safety First." Success in safety starts at the top. Our management team is committed to supporting our goal of Zero Accidents through clear communication of our high expectations, provision of the resources necessary to achieve results, and follow-up to ensure compliance. Our Safety program is written and implemented with major objectives in mind. One is to ensure that it is easy to understand and is in compliance with all regulation of the industry working. Some of the most highly accredited people in the industry have been involved in forming our program. Every project is unique. With the presence of AL REEF On-Site Safety-Coordinator, we ensure safety compliance inspections on a regular basis, weekly safety meetings, and the issuing of safety notices specific to that site.



QA / QC



It is our mission to be a civil, mechanical, electrical and instrumentation engineering constructor committed to providing maximum customer satisfaction. Utilizing our unique capabilities to provide innovative quality solutions, we will be the lowest cost provider of services in the market. Performing large scale and complex projects requires maintaining the highest standards of quality. Our organization is built on these principles:

1. *Quality People*
2. *Motivated, highly-trained experts committed to their work.*
3. *Quality Process*
4. *Fully managed from the initial work and safety planning, down to the finished structure.*
5. *Quality Products*
6. *Our work stands the test of time.*
7. *Quality Relationships*

With our customers, our partners, and our community. Through internal and external partnering we provide the maximum value to customers, a challenging,



OTHER SERVICES



1. Maintenance Services :

- Mechanical & Fabrication Services
- Civil & Electrical Maintenance Services

2. Operation Services

- Janitorial Services
- Catering Services
- Housing Maintenance Services
- Overhauling & Calibration of Valves and related process equipment

3. Warehouse Logistics and Management

- 3PL Services covering Warehouse Management & Logistics Services
- Warehouse Shelving, Racking, Mezzanine Floors Installation Services
- Truck Operation & Maintenance Service.



وزارة التجارة
Ministry of Commerce

▲ 9447/01/28

التاريخ :

شهادة تسجيل الشركة
Company Registration Certificate

حقیقتها : سعودی

صحة البيئة

مركزها الرئيسي: ٨٦٧٣، كعب بن مالك، ٢٤٧٩

هاتف :

الرمز البريدي: ١٢٦١١

حائف :

للإطلاع على بيانات الأنشطة الرجاء مسح الرمز التجاري :

10

أ. س. المال : ٥٠٠,٠٠٠ ريال سعودي

المدير: سيد أعجاز احمد

المديرون : 1

2

1

4

1

3

152

100

10

11

12

13

14

10

16

سلطات المدير/المديرون : حسب ما نص عليه عقد الشركة

يشهد مكتب السجل النجاري بمدينة الرياض :

بأنه تم تسجيل الشركة المذكورة أعلاه بمدينة :

وتنتهي صلاحية الشهادات في: ١٤٤٧/٠٤/٢٧ هـ

بموجب الإيصال رقم: ٢٤١.٣٣٥٧٨٧٦١

وتاریخ: ۱۴۱۶/۰۴/۲۷ هـ



To Verify The Information Of This Certificate Visit <https://www.pearsoneduae.com> بمعلومات الموقع من استك هذه الشهادة بالمتصفح على

COMPANY DOCUMENTS





شهادة اشتراك
Membership Certificate

غرفة الرياض
Riyadh Chamber

Membership No. :	1040062	1040062	رقم العضوية الموحد :
Date of Issue:	30/10/2024	2024/10/30	تاريخ الاصدار:
Membership Class :	Second	الثانية	درجة العضوية :
Riyadh Chamber Certifies	تشهد الغرفة التجارية الصناعية بالرياض بأن		
شركة منحة النجوم المحدودة (شخص واحد)			
Commercial Registration No.	1009126343	1009126343	مقيدة بالسجل التجاري / الترخيص رقم :
Certificate Expires on	19/10/2025	2025/10/19	ينتهي سريان هذه الشهادة في

COMPANY DOCUMENTS



Proof Number Original Date Expiration Date	1056374829 25/11/2024 24/5/2025	رقم الإثبات تاريخ الإصدار تاريخ الانتهاء
--	---------------------------------------	--

العنوان الوطني
NATIONAL ADDRESS

إثبات عنوان
Address Proof

Address Holder Details

بيانات صاحب العنوان

Name

شركة منحة النجوم المحدودة

الاسم

Customer Acc.

3 1 3 3 0 7 7 0 9 3 3

رقم الحساب

Reg. Date

30/10/2024

تاريخ التسجيل

Address Details

تفاصيل العنوان

Short Address

R H O A 8 6 7 3

العنوان المختصر

Building No.

Street

رقم المبنى

8 6 7 3

Kaab ibn Malik

كعب بن مالك

8 6 7 3

Secondary No.

District

الرقم الفرعي

2 4 7 9

Al Olaya Dist.

حي العليا

2 4 7 9

Postal Code

الرمز البريدي

1 2 6 1 1

1 2 6 1 1

City

المدينة

RIYADH

الرياض

Kingdom of Saudi Arabia

المملكة العربية السعودية

To Verify
للتحقق

<https://proof.address.gov.sa/VerifyProofNA.aspx>

تم إصدار هذا الإثبات إلكترونياً ولا يتطلب التوقيع عليه

تم إصدار هذا الإثبات بناءً على طلب الموضح أعلاه، ويحظر قطعياً تقليده أو إدخال أي تعديلات عليه سواء بالكتابة أو المحقق، ويعد الإثبات إثباتاً (لا شارة) شريطة أن يكون ذلك، كما يعرض صاحبه للمساءلة القانونية.

This proof has been issued electronically and does not require a signature

This proof has been issued upon the request of the abovesigned, and it is absolutely prohibited to imitate it or make any modifications to it, whether by addition or deletion, and the proof is considered void if it is marked by something, and its owner is subject to legal accountability.

19992

<https://spionline.com.sa/ar/national-address-1/>

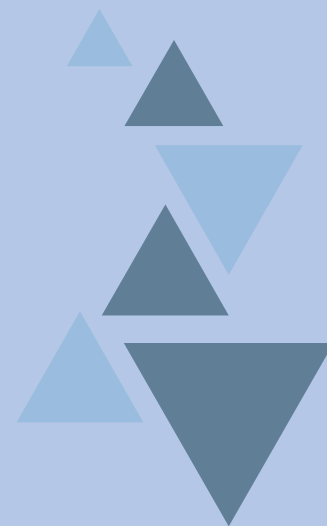
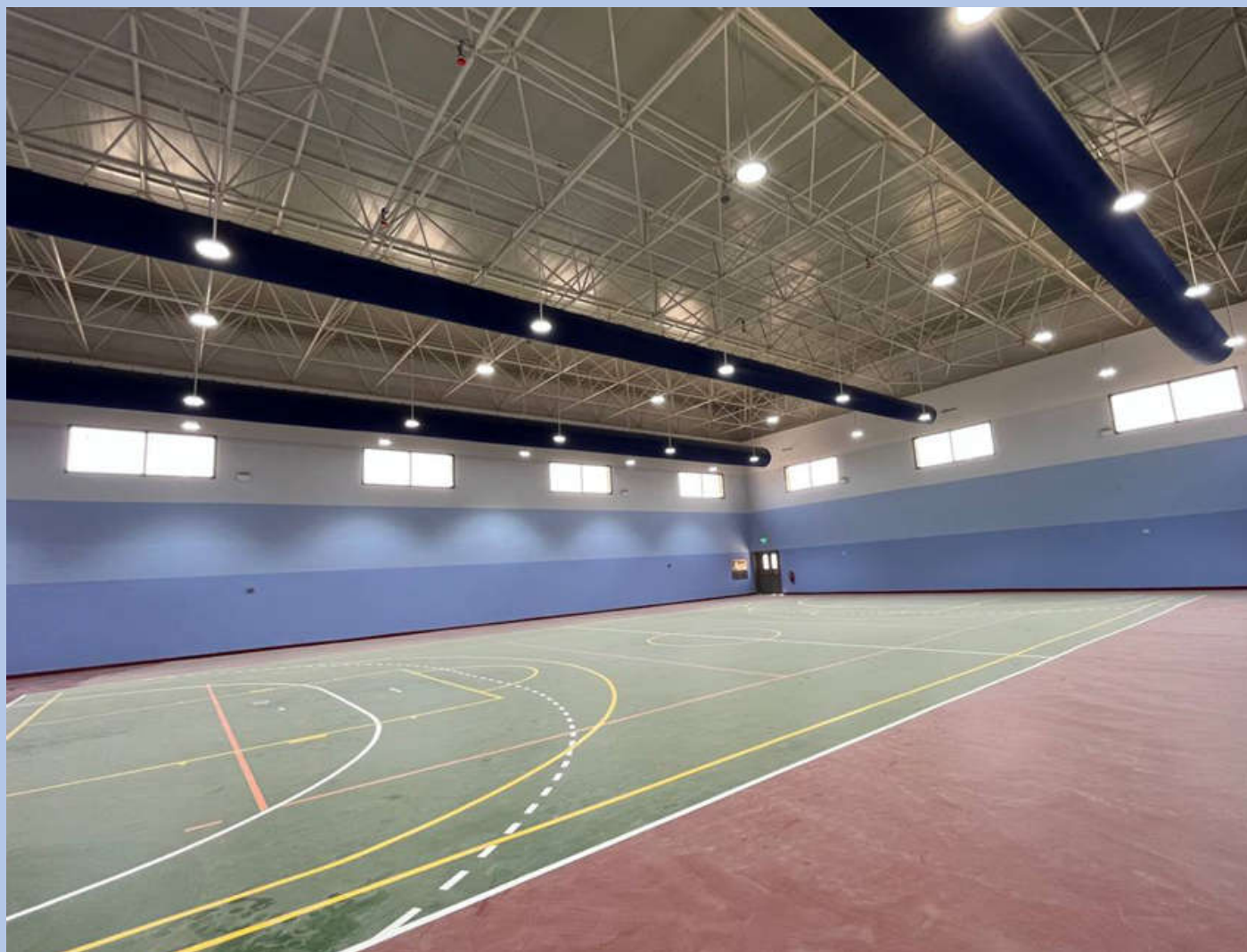
OUR PROJECTS

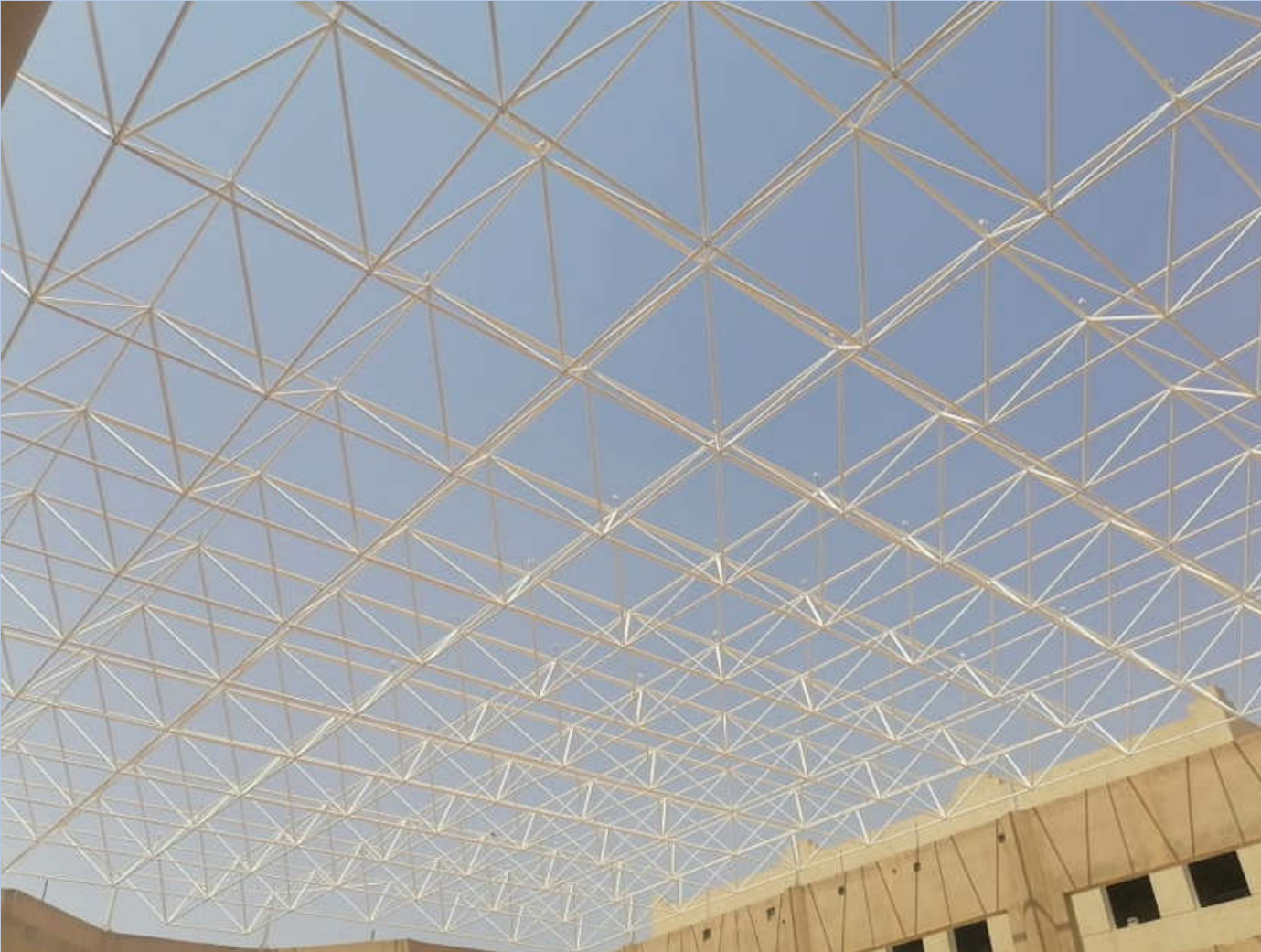


1. Rawabi Villa Project Civil work. 10 villa Ishraqa labor camp
2. Project Riyadh MEP full material supply and apply Riyadh Palma Compound project - Riyadh ---
3. Plumbing and Electrical Work. Narjis villa 120 MEP (complete)
4. Misk City Office Building civil work (complete)
5. Yamama Palace Riyadh Chilled Water Piping system (complete)
6. Labor office Building (finishing stage) (Zulfi (Ministry of Labor).
7. Saraya Narjees (136 villa) handing over stage
8. Roshan (50 villa) complete civil work finishing stage)
9. Triple Bay Marina Resort-3 MEP Work 8.5 Million (Amala)
10. Sedra 4 villa civil work 100 villa (Roshan)
11. Fursan villa project 100 civil and mep
12. Narjis villa fitout work 10 villa civil and mep











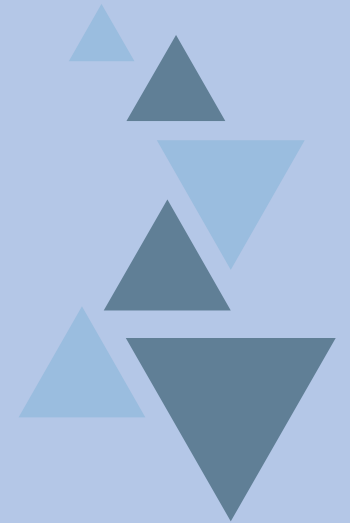


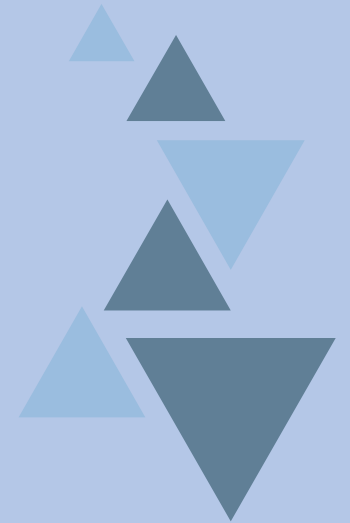
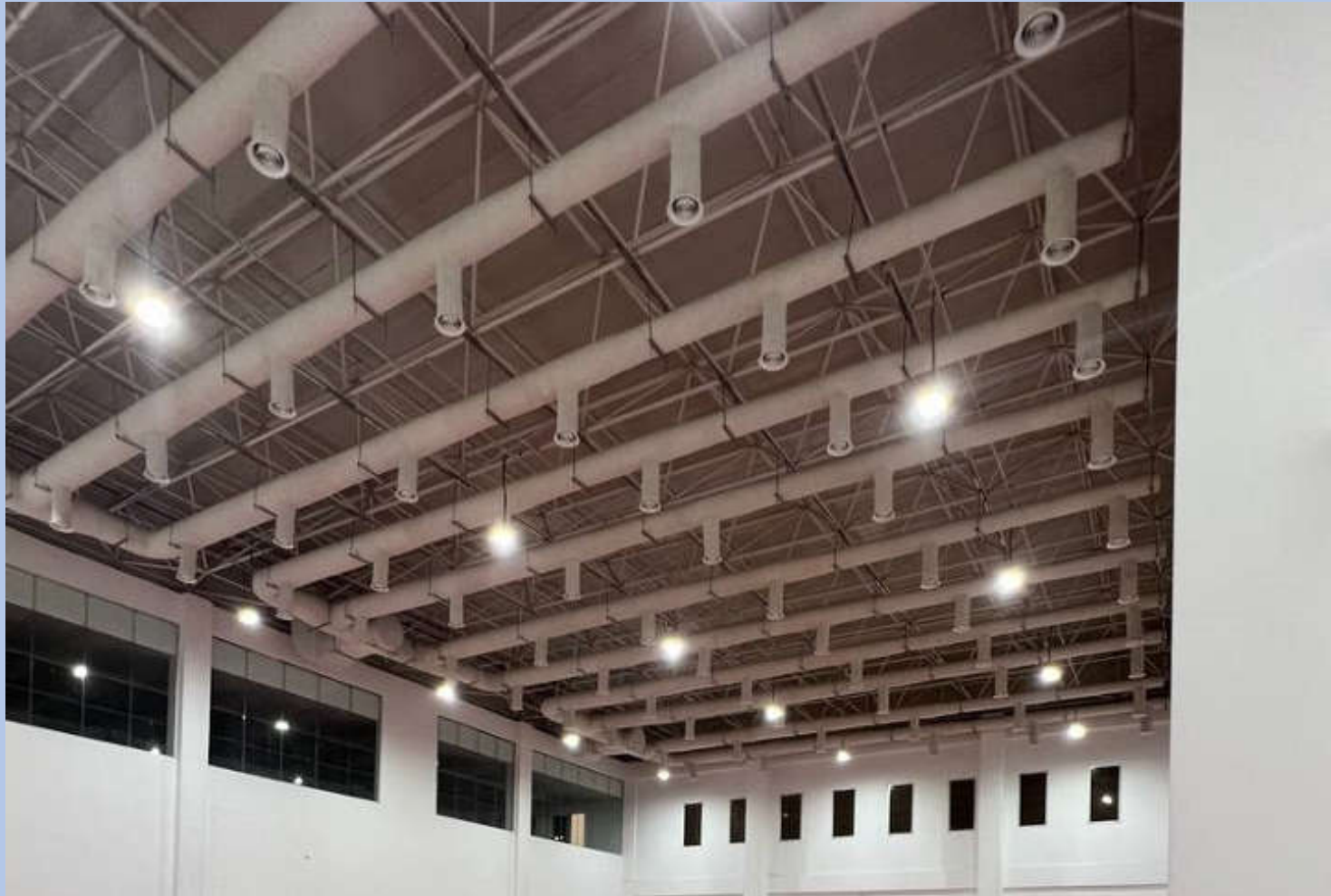
Al Mahra Educational Complex – Sport Complex



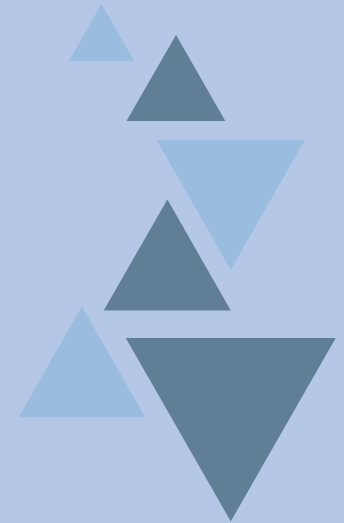


Al Yamama University





Veolia Co- royal Comm.



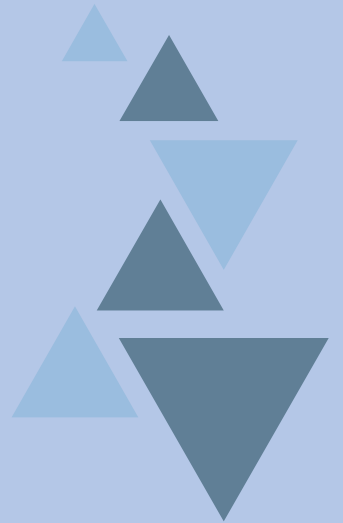




















AL REEF GROUP

Mail: info@alreefksa.com

Mob : [+966-54-152-1287](tel:+966-54-152-1287)

Sallah Ad Din Ayyubi rd, Al Malaz, Riyadh,
12836, Kingdom of Saudi Arabia



AL REEF GROUP **STEEL DIVISION**



COMPANY PROFILE



WELCOME TO AL REEF GROUP – STEEL DIVISION



▪ STEEL WORKS

Al Reef is a Riyadh-based design and manufacturing company. Founded in 2021, it has evolved into a full spectrum resource, providing comprehensive expertise in strategic development, concept design, logistics, manufacturing, delivery, and installation.

Our highly-skilled craftsmanship and continuous flow of innovative ideas and exclusive blend has allowed Al Reef to offer our clients a unique range of products and services, bringing the concept of visual communication to a quality new level.

Our clients are our inspiration and motivation for excellence. We consistently approach every project with attention to detail, creativity and quality resources. This approach will help earned us the ISO 9001-2015 certification in future.



OUR CORE VALUES



1. Quality Excellence

We are committed to delivering the highest standards of quality in every product and service — ensuring durability, strength, and long-term performance.

2. Integrity & Transparency

We operate with honesty, accountability, and transparency in all business dealings — earning the trust of our clients, partners, and community.

3. Innovation & Continuous Improvement

We embrace modern technologies and continuously improve our processes to stay ahead in the steel industry and provide smarter solutions.

4. Customer Focus

Our clients are at the center of everything we do. We strive to understand their needs and exceed their expectations with customized steel solutions.

5. Safety First

We prioritize the health and safety of our employees, clients, and stakeholders — maintaining a safe working environment at all times.

6. Sustainability & Responsibility

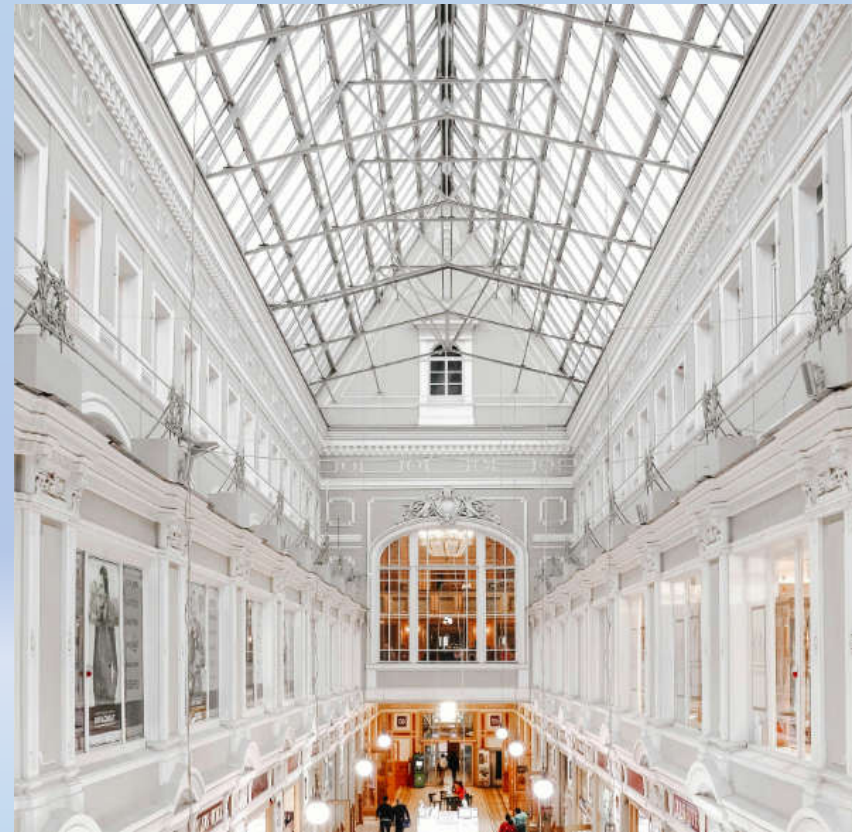
We are committed to sustainable practices, minimizing environmental impact, and contributing to the well-being of the communities we serve.

7. Teamwork & Respect

We foster a collaborative culture where every team member is respected and encouraged to contribute to our shared success.

8. Timely Delivery

We value time as much as quality — ensuring timely production, dispatch, and delivery without compromising excellence.



WHAT WE OFFER

1. Structural Steel Fabrication

Manufacturing and assembly of structural steel components for commercial, industrial, and residential buildings — including beams, columns, trusses, and frames.

2. Steel Erection & Installation

On-site erection and installation of prefabricated steel structures with full safety compliance and precision engineering.

3. Steel Detailing & Drafting

Providing accurate shop drawings and 3D detailing (Tekla, AutoCAD, etc.) to support fabrication and construction processes.

4. Pre-Engineered Steel Buildings (PEB)

Design, supply, and erection of cost-effective, modular steel buildings — ideal for warehouses, showrooms, and factories.

5. Custom Metal Fabrication

Tailored fabrication services for stairs, platforms, ladders, handrails, mezzanines, gates, and other architectural steel elements.

6. Welding & Finishing Services

Professional welding (MIG, TIG, ARC) and finishing processes like sandblasting, painting, galvanizing, or powder coating for corrosion resistance.

7. Steel Supply & Trading

Supply of steel materials including beams, channels, angles, plates, rebar, pipes, and hollow sections (local and imported grades).

8. Maintenance & Steel Repairs

On-site and off-site steel structure maintenance, reinforcement, retrofitting, and repair services.

9. CNC Cutting & Bending

Precision CNC plasma/laser cutting, shearing, and bending for sheet metals and steel plates as per custom designs.

10. Turnkey Steel Projects

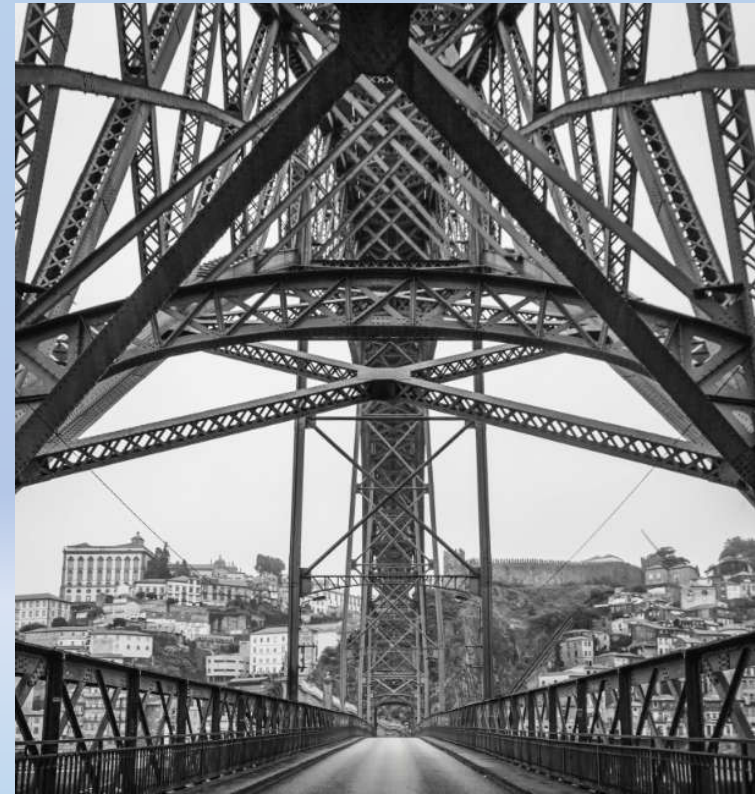
Complete design–fabrication–installation services for steel structures, from initial concept to final commissioning.



OUR VISION

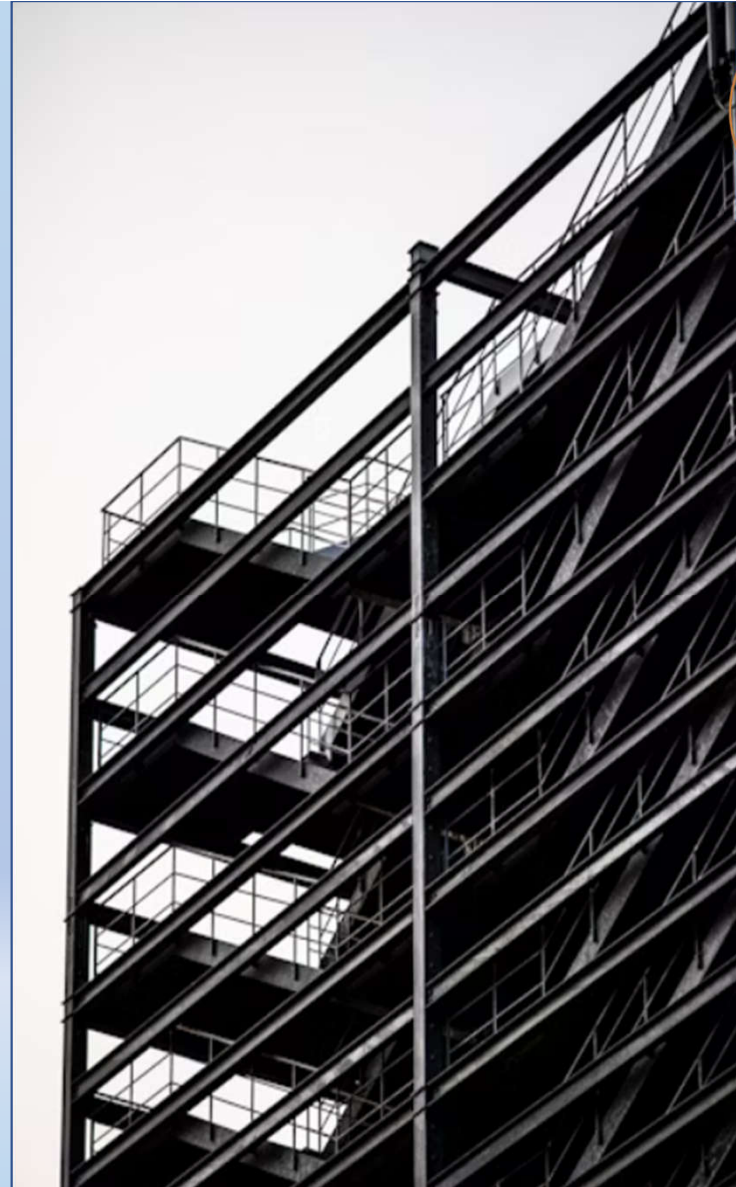


"At Al Reef Group, we envision becoming the foremost steel solutions provider in Saudi Arabia and the wider Middle East, renowned not only for delivering superior quality steel products but also for pioneering innovation and sustainable practices in the industry. We strive to empower construction, infrastructure, and industrial sectors by offering cutting-edge, reliable, and environmentally responsible steel solutions that drive economic growth and community development. Our commitment is to build lasting partnerships through integrity, excellence, and continuous improvement, creating iconic, resilient structures that shape the future and stand as a testament to strength and durability for generations to come."



OUR MISSION

"To deliver high-quality steel products and services that meet and exceed our customers' expectations through innovation, expert craftsmanship, and strict quality control. We are dedicated to ensuring safety, sustainability, and timely delivery while fostering strong partnerships with clients and stakeholders. Our mission is to support the growth of the construction and industrial sectors by providing reliable, efficient, and cost-effective steel solutions tailored to every project's unique needs."



OUR MACHINERY



1. CNC Plasma Cutting Machine

High-precision cutting of steel plates and sheets for accurate fabrication.

2. Laser Cutting Machine

For detailed, clean cuts on various steel thicknesses with minimal waste.

3. Press Brake Machine

Used for bending and shaping steel plates into required angles and profiles.

4. Shearing Machine

Cuts large steel sheets into smaller pieces with straight cuts.

5. Rolling Machine

Rolls steel sheets or plates into cylindrical shapes or curves for pipes and tanks.

6. Welding Machines (MIG, TIG, ARC)

Essential for joining steel components with different welding techniques suited for specific needs.



OUR MACHINERY



7. Shot Blasting Machine

Used to clean steel surfaces by blasting abrasive materials to remove rust, paint, or scale.

8. Sand Blasting Equipment

Prepares steel surfaces for painting or coating by thorough cleaning.

9. Overhead Cranes

For lifting and moving heavy steel materials safely within the workshop.

10. Forklifts & Loaders

Transport raw materials and finished products within the facility and yard.

11. Hydraulic Shears

Cutting thick steel plates with high force and precision.

12. Pipe Bending Machine

Bends steel pipes to desired shapes for construction and fabrication.



THE CLIENTS & PARTNERS



أرامكو السعودية
saudi aramco



Zamil
Group



MAERSK



THE CLIENTS & PARTNERS



THE CLIENTS & PARTNERS



OUR PROJECTS



OUR PROJECTS



OUR PROJECTS



OUR PROJECTS









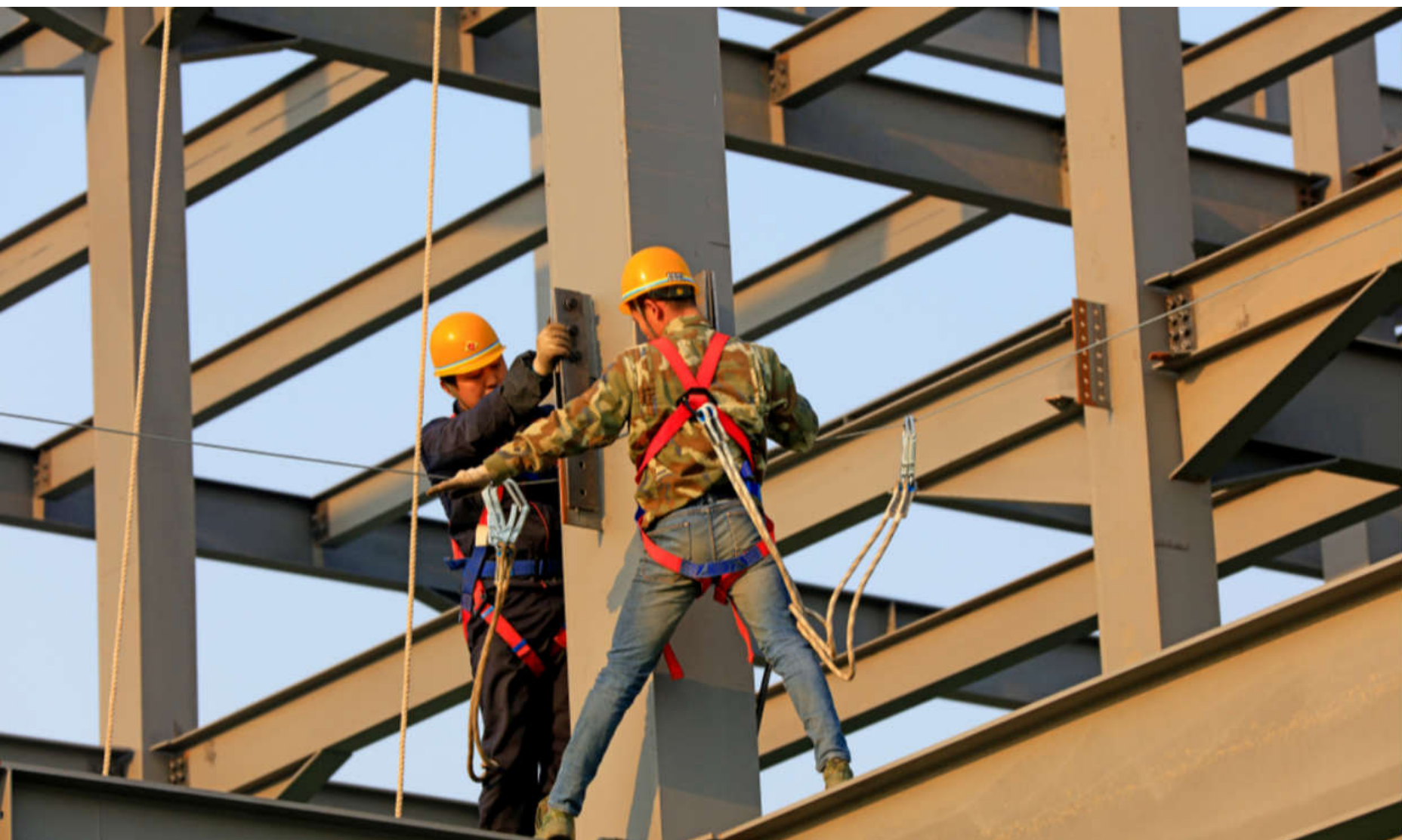


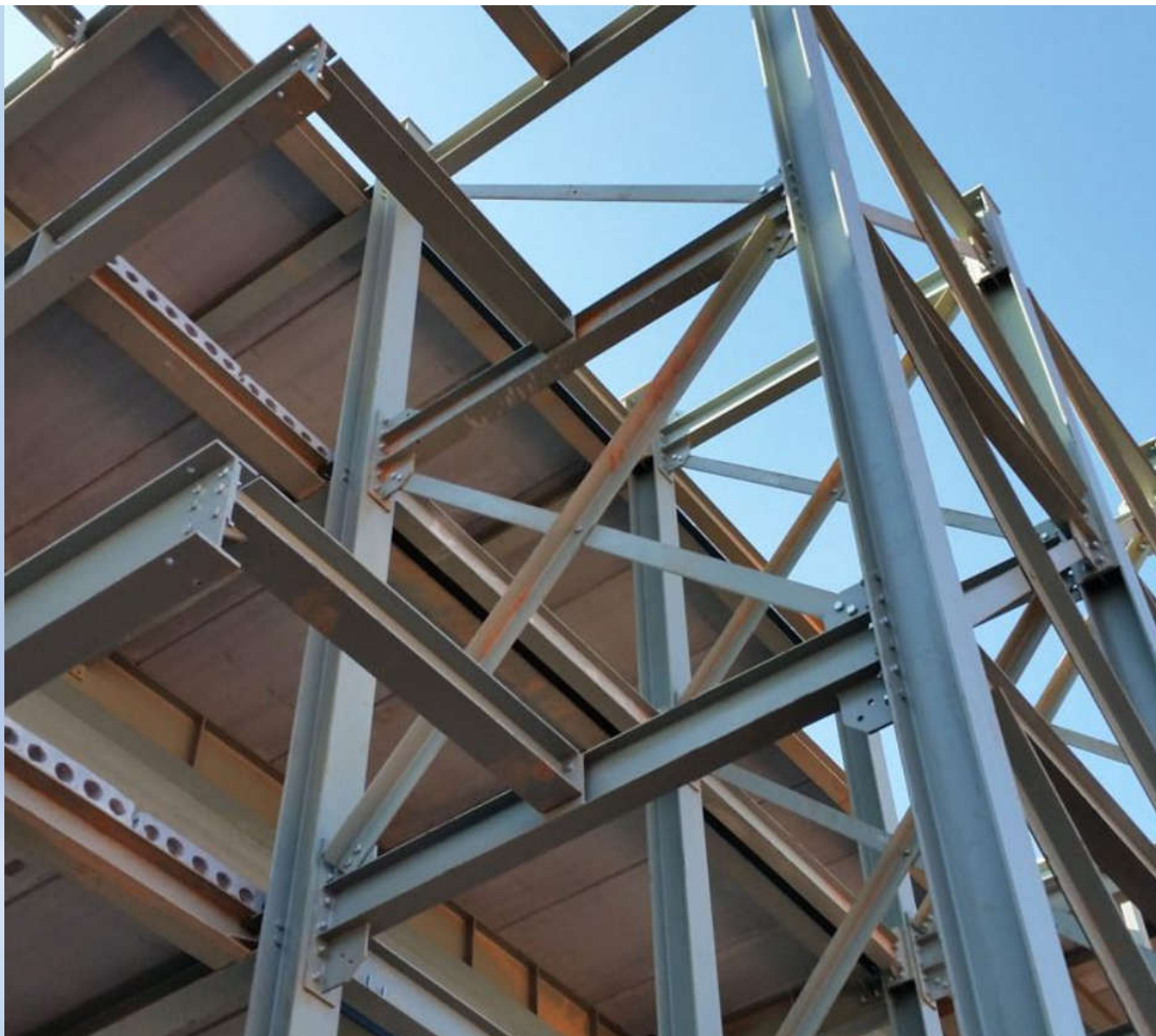


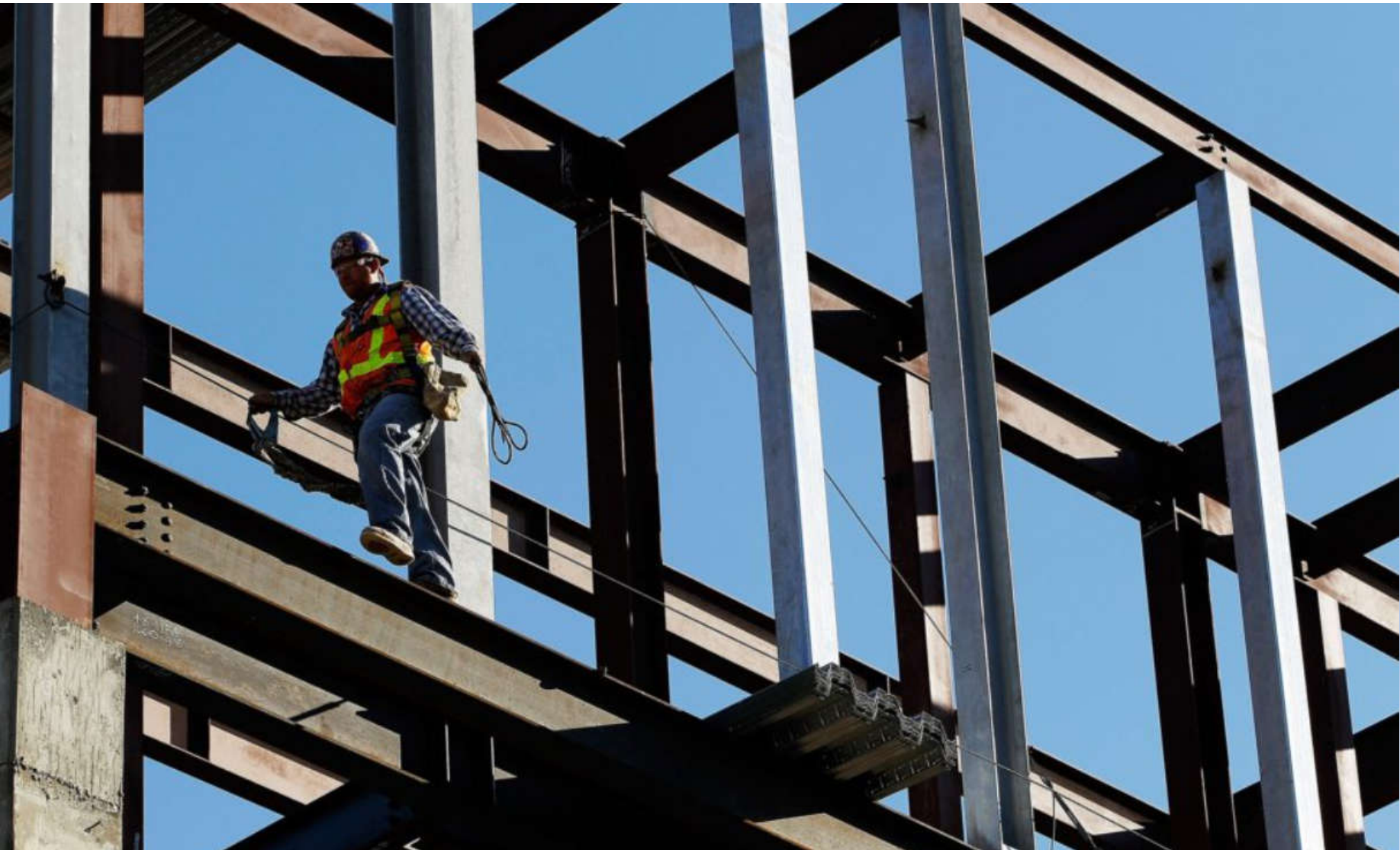




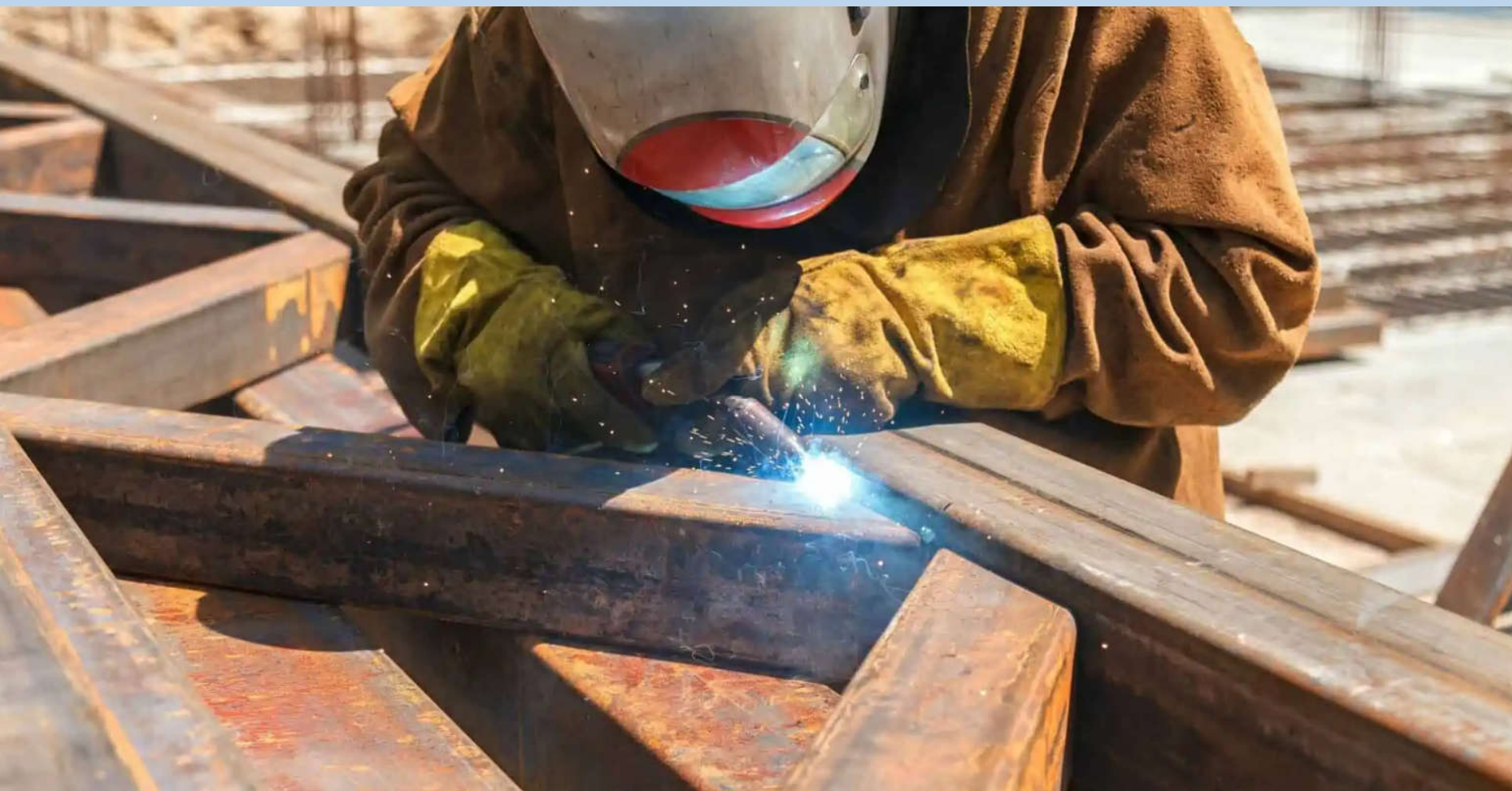


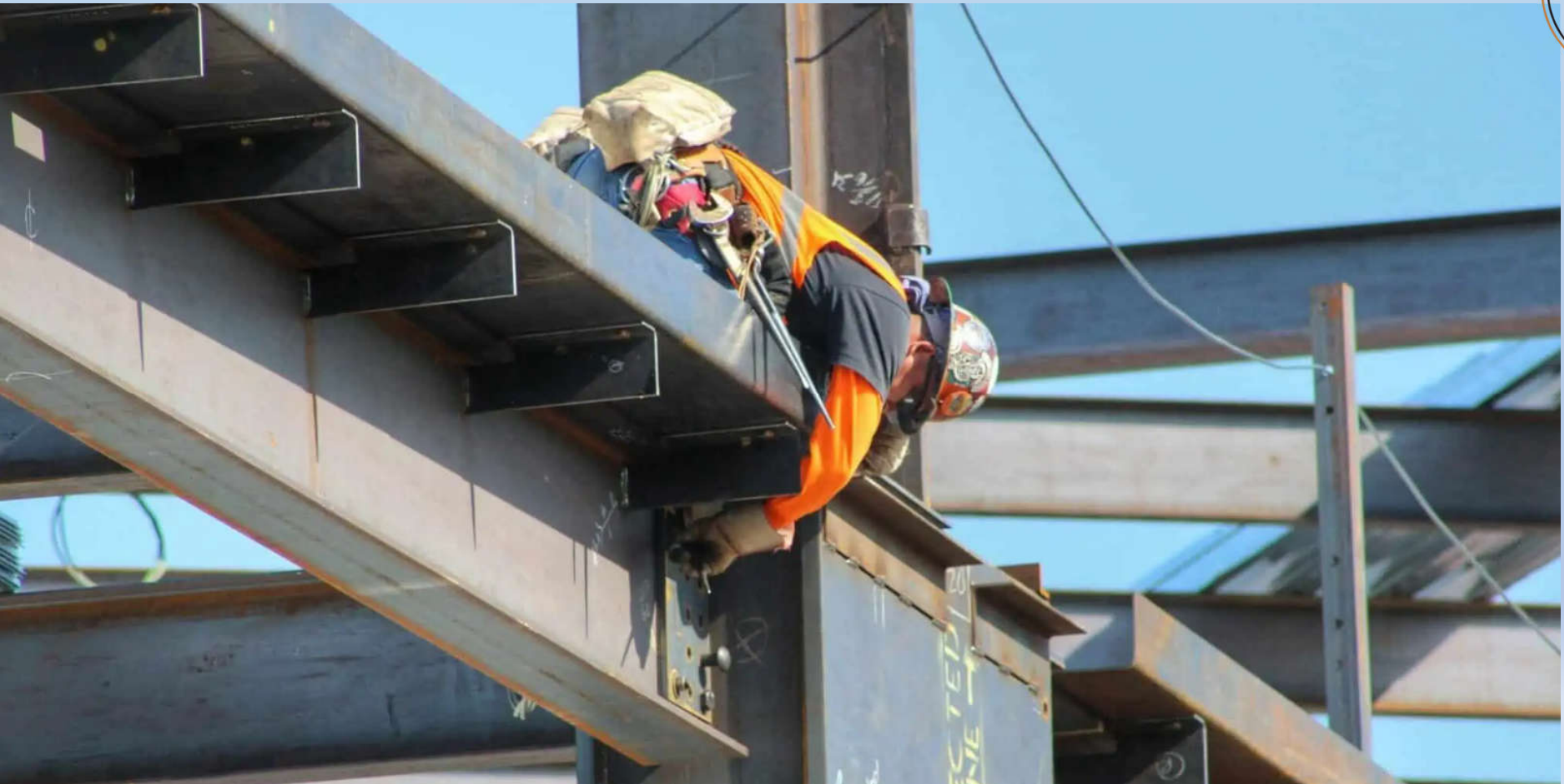


















CR CERTIFICATE

رؤية
2030
المملكة العربية السعودية
KINGDOM OF SAUDI ARABIA

وكالة الريف العالي للدعاية والاعلان



السجل التجاري: 1009084744

MCgovSA
www.mc.gov.sa

وزارة التجارة
Ministry of Commerce



رمزك التجاري QR Code

من خلاله يمكنك التحقق المباشر من المعلومات:

- السجل التجاري
- شهادة السعودة
- شهادة الزكاة
- رخصة البلدية
- برنامج نطاقات
- الغرفة التجارية





وزارة التجارة
Ministry of Commerce

شهادة تسجيل فرع مؤسسة فردية
Branch Of Individual Establishment Registration Certificate

الرقم الموحد : ٧٠٣٩٢٩٤٢٢٣
رقم المنشأة : ١٠٠٩٠٨٤٧٤٤
التاريخ : ١٤٤٦/٠٢/٠٨ هـ

إسم التاجر: فاطمه مسفر بن حسين اليامي الجنسية : سعودي

تاريخ الميلاد : ١٤١٥ هـ

رقم السجل المدني/ بطاقة الأحوال : ١٠٨٣٥٥١٧٧٨

تاريخه : ١٤٤٠/٠٥/١٥ هـ

مصدره: حوال العثيم مول-نساء

مركزها الرئيسي : الرياض

هاتف : الرمز البريدي :

ص. ب :

رقم سجل المركز الرئيسي : ١٠١٠٦٥٤٠٣٣

الإسم التجاري للفرع : وكالة الريف العالي للدعاية والاعلان

العنوان : ٤٨٧٩، العثيرة، ٦٧٢٦

هاتف : الرمز البريدي : ١٤٢٢٧

ص. ب :

النشاط : للاطلاع على بيانات الأنشطة الرجاء مسح الرمز التجاري

رأس المال : ٥٠٠٠ خمسة آلاف ريال فقط لا غير

إسم المدير أو الوكيل المفوض : فاطمه مسفر بن حسين اليامي

الجنسية : سعودي

تاريخ الميلاد : ١٤١٥ هـ

رقم السجل المدني - الإقامة : ١٠٨٣٥٥١٧٧٨

تاريخه :

مصدره :

سلطات المدير :

يشهد مكتب السجل التجاري بمدينة : الرياض

بأنه تم تسجيل فرع المؤسسة المذكورة أعلاه بمدينة : الرياض

وتنتهي صلاحية الشهادات في : ١٤٤٧/٠٢/١٨ هـ

بموجب الإيصال رقم : ٢٤٠٨١٢٩٩٠٦٧٩

وتاريخ : ١٤٤٦/٠٢/٠٨ هـ



يُستلزم التحقق من صحة هذه الشهادة بالدخول على : <http://sajr.mc.gov.sa>

Kingdom of Saudi Arabia | الرياض 11162 | +966 11 294 4444 | MCgovSA | www.mc.gov.sa | المملكة العربية السعودية



السادة / وكالة أريف المائي الدعاية والإعلان

نسأل الله أن يكتب لكم التوفيق والنجاح في عملكم التجاري وأن تكونوا شريكاً في تعزيز اقتصاد المملكة العربية السعودية.

يسرنا إبلاغكم بأن رقم منشأتكم الموحد هو

٧٠٢٩٢٩٤٣٣٣

وقد تم ربطه بالخدمات الحكومية التالية..

٦٤٩٦٧٧٠٢
رقم منشأتكم



١٠٠٩٠٨٤٧٤٤
رقم منشأتكم



٧٠٢٩٢٩٤٣٣٣
رقم منشأتكم



٤٣١٨٤٤٧
رقم منشأتكم



لا يوجد
رقم منشأتكم



٣١٠٣٠٠٧٤٠٩٣
رقم منشأتكم



٢٠٠٦٢٢٧٠٥١
رقم منشأتكم



للاستفادة من الخدمات المقدمة
من الجهات الحكومية



دليل التاجر



NATIONAL ADDRESS



Proof Number	1064108505	رقم الإثبات
Original Date	14/4/2025	تاريخ الإصدار
Expiration Date	12/8/2025	تاريخ الانتهاء



إثبات عنوان - Address Proof

Address Holder Details

بيانات صاحب العنوان

Name	وكالة الريف العالي للدعاية والاعلان	الاسم
Customer Acc.	3 1 3 3 0 1 5 5 7 5 3	رقم الحساب
Reg. Date	12/8/2024	تاريخ التسجيل

Address Details

تفاصيل العنوان

Short Address	R Q S A 4 8 7 9	العنوان المختصر
Building No.	Street	رقم المبنى الشارع
4 8 7 9	Al Ashrat	العشيرة 4 8 7 9
Secondary No.	District	الرقم الفرعي الحي
6 7 2 6	Al Salam Dist.	حي السلام 6 7 2 6
Postal Code		الرمز البريدي
1 4 2 2 7		1 4 2 2 7
City		المدينة
RIYADH		الرياض
Kingdom of Saudi Arabia		المملكة العربية السعودية



للتحقق To Verify

<https://proof.address.gov.sa/VerifyProofNA.aspx>

تم إصدار هذا الإثبات إلكترونياً ولا يتطلب التوقيع عليه

تم إصدار هذا الإثبات بناء على طلب الموضح أعلاه، ويحظر شطبها لتقليده أو إدخال أي تعديلات عليه سواء بالزيادة أو النقص، وبعد الإثبات كالتصديق إذا شابه شيء من ذلك، كما يعرض صاحبه للمساءلة القانونية.

This proof has been issued electronically and does not require a signature

This proof has been issued upon the request of the above-named, and it is absolutely prohibited to imitate it or make any modifications to it, whether by addition or deletion, and the proof is considered void if it is marked by something, and its owner is subject to legal accountability.

19992 <https://splonline.com.sa/ar/national-address-1/>

AL REEF GROUP

Mob : +966-54-152-1287

**Sallah Ad Din Ayyubi rd, Al Malaz, Riyadh,
12836, Kingdom of Saudi Arabia**

Mail : info@alreefksaa.com

