

JECKWRAP™



CATALOG

**20
25**

HIGH-GRADE CALENDERED
AND CAST VINYL FILMS

ABOUT US

TeckWrap began as a vision and passion of international auto enthusiasts from the US and Europe. Started in Baltimore, Maryland, USA in 2012, it has been developing fast since then.



TeckWrap is proud to offer the best quality vinyl at affordable prices. We live by two defining slogans: "Quality and Diversity" and "Feel the difference", and they strongly express our entire philosophy.

We are excited to offer you limitless possibilities to create fashionable, stylish exterior designs with different colors and finishes.

TECKWRAP™



**REFLECTIVE
CHROME**

Reflective Cast Chrome

A conformable cast chrome material with a silver coating. It is suitable for car wrapping (or any smooth or medium-curved surface). It comes in 8 reflective colors to create a distinctive appearance and improve a car's aesthetics. We recommend installing it with a steam vacuum or IRR heater.

Basic Specifications

Thickness of film: $90 \pm 5 \mu\text{m}$

The thickness of film with release liner: $155 \pm 5 \mu\text{m}$

Type of film: Cast vinyl film with air-release channels

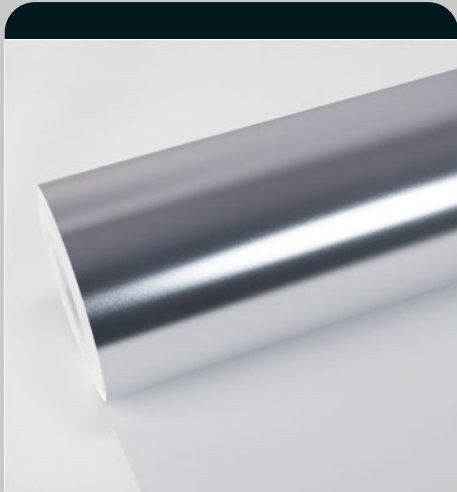
Adhesive: Henkel solvent-based moderate adhesive

Storing period: 3 years if stored at $-20\text{ }^{\circ}\text{C}$ to $+65\text{ }^{\circ}\text{C}$, with a relative humidity of 50%, in the original package, away from direct sunlight, in a clean and dry place

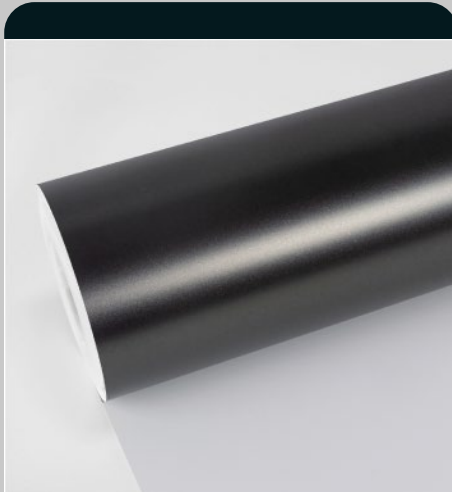
Application: from $-20\text{ }^{\circ}\text{C}$ to $+65\text{ }^{\circ}\text{C}$, usage from $\geq +10\%$

Dimensional stability: shrinkage less than 0,10%

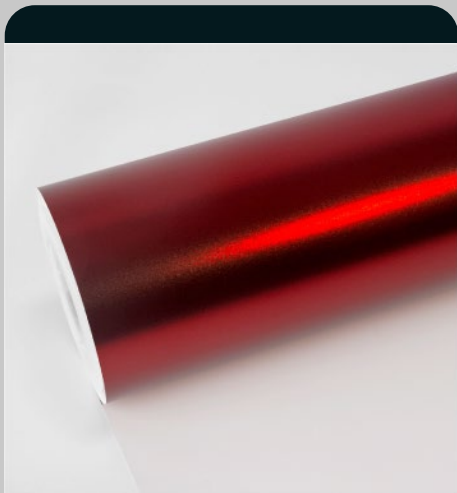
Package: Roll width 152 cm, length 16 m



Ice Silver
SKU: CSC01



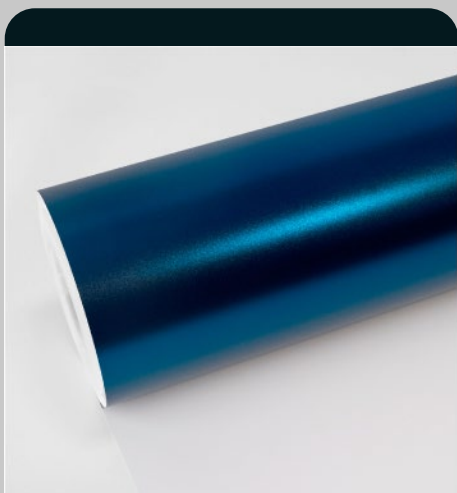
Graphite Grey
SKU: CSC03



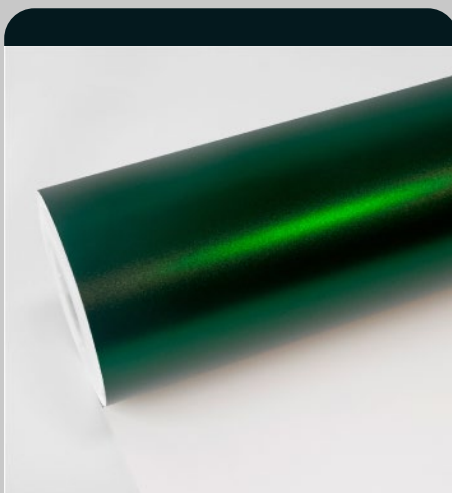
Shadow Red
SKU: CSC04



Dark Purple
SKU: CSC05



Shadow Blue
SKU: CSC06

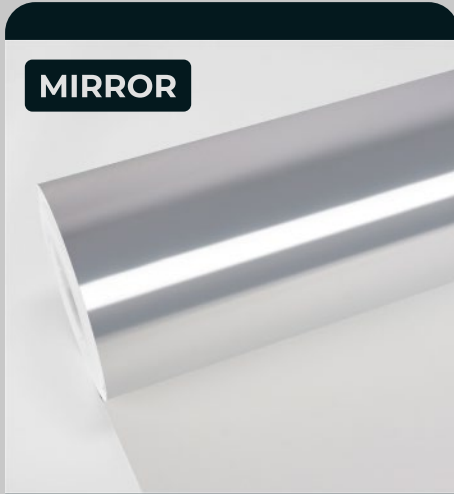


Dark Green
SKU: CSC07

CAST CHROME



Copper Brown
SKU: CSC08



Super Silver (Mirror)
SKU: CMC01

CASSTCHROME

Roll Size: 1.52m*16m (59.8"* 629,9", 4.98ft*52,5ft, 1.66yd* 17,5yd)

Please visit www.teckwrap.com for product specifications and installation instructions.

TECKWRAP™



**GLOSS
METALLIC**

Gloss Metallic

With a huge collection of colors, this series stands for different spirits and emotions. Meanwhile, it looks fresh and compelling with a textured finish. Take your pick, and your favorite wrap will do the talking before someone tries to figure out what kind of person you are.

Basic Specifications

The thickness of film: 0.16mm

Type of film: High grade polymeric multilayered calendared vinyl film with air release channels

Adhesive: Solvent polyacrylate

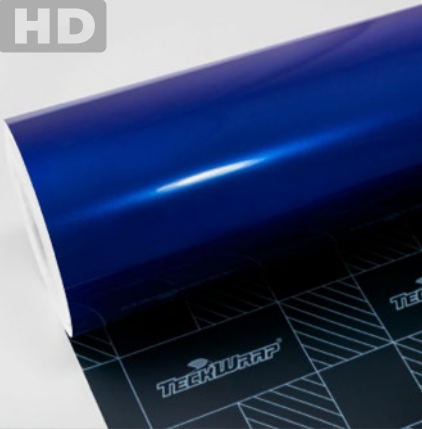
Storing period (shelf life): 2 years if stored in +10°C to +20°C, relative humidity 50%, in original package, away from direct sunlight, clean and dry place

Avg. indoor life: 4 years when followed rules of application and usage

Avg. outdoor life: 3 years when followed rules of application and use

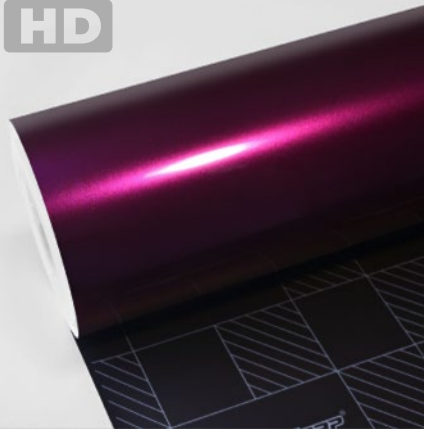
Post-heating temperature: 110°C flat surfaces, 130°C curves, and overlaps

HD



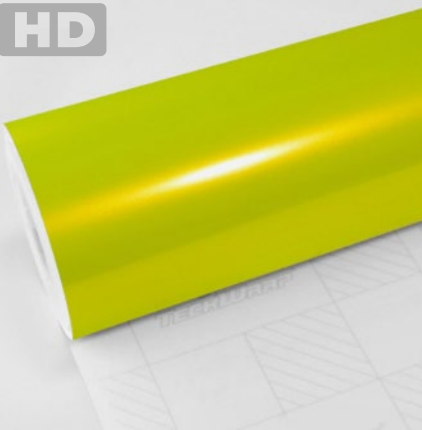
Deep Blue
SKU: RB02-HD

HD



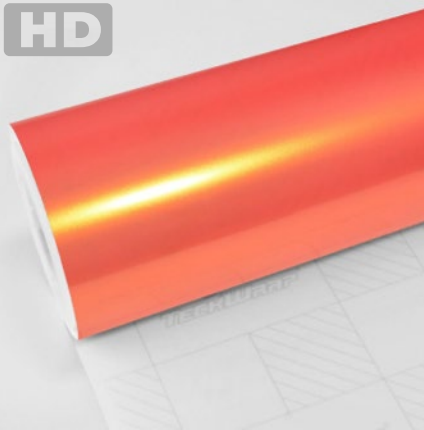
Passionate Purple
SKU: RB04-HD

HD



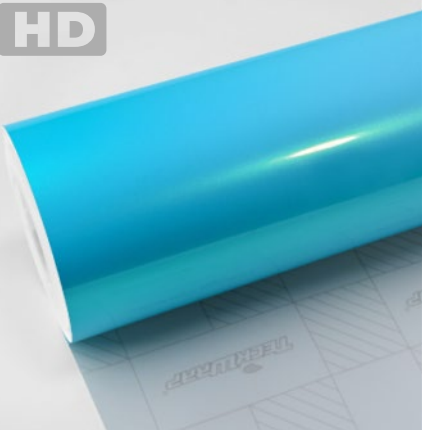
Acid Lime
SKU: RB07-HD

HD



Coral Peach
SKU: RB08-HD

HD

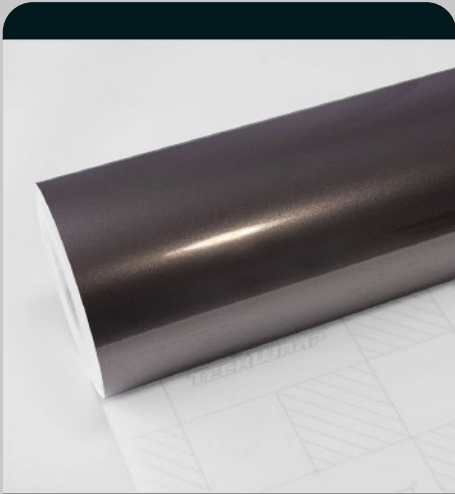


Caribbean Blue
SKU: RB09-HD

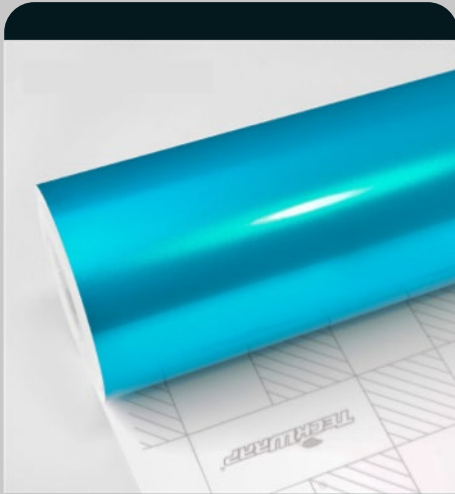
HD



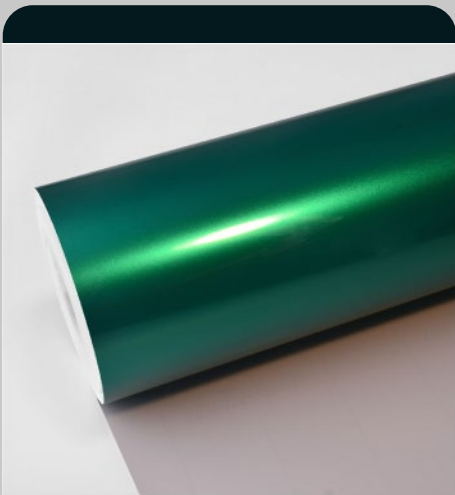
Dark Platinum
SKU: RB12-HD



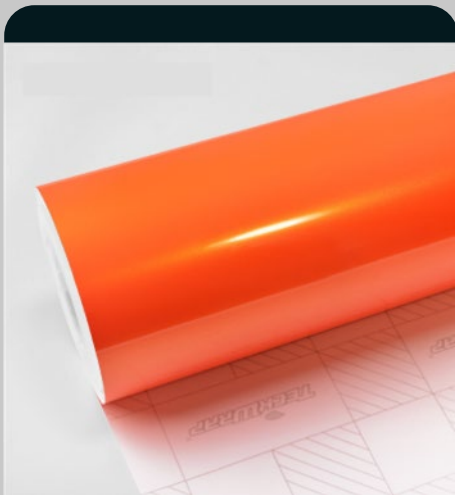
Ash Grey
SKU: RB13-HD



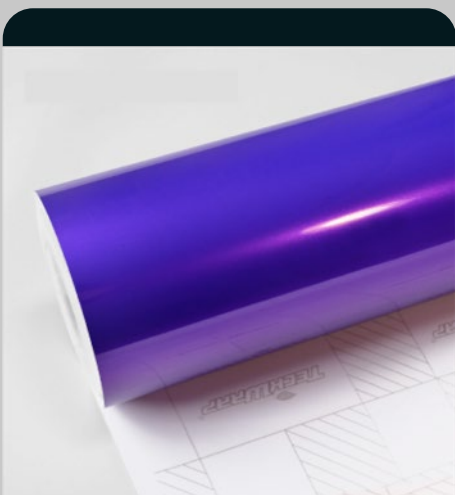
Sea Turquoise
SKU: RB16-HD



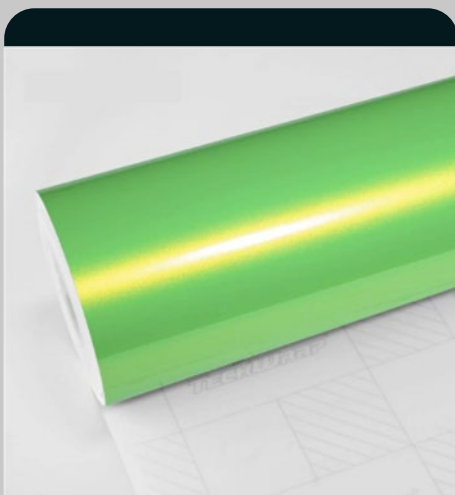
Ocean Green
SKU: RB18-HD



Deep Orange
SKU: RB19-HD

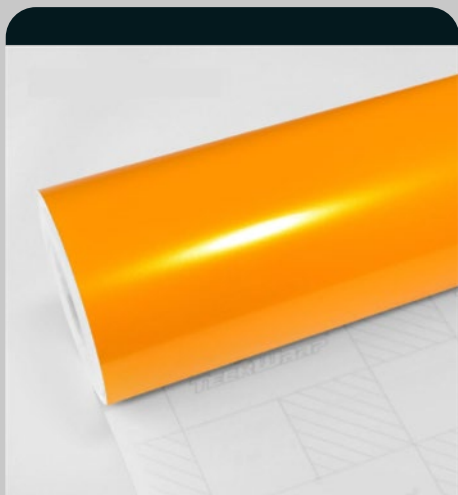


Midnight Purple
SKU: RB20-HD

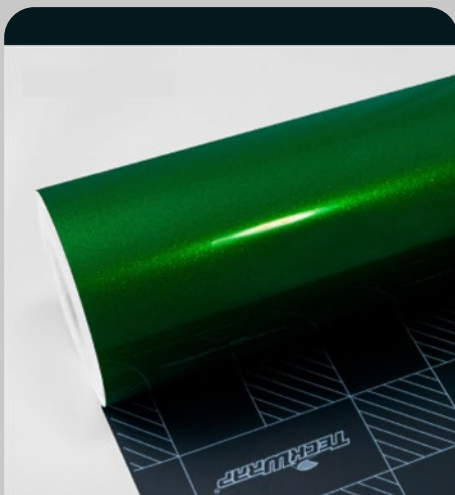


Kelly Green
SKU: RB22-HD

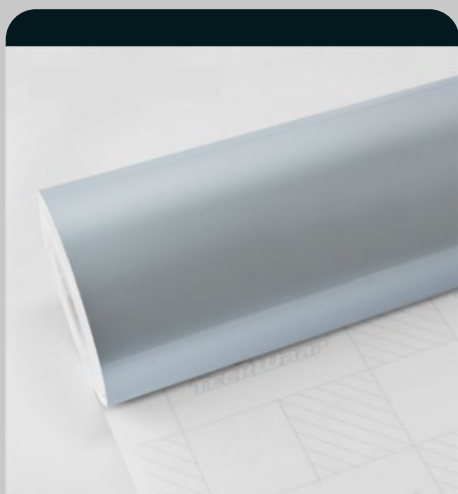
GLASS METALLIC



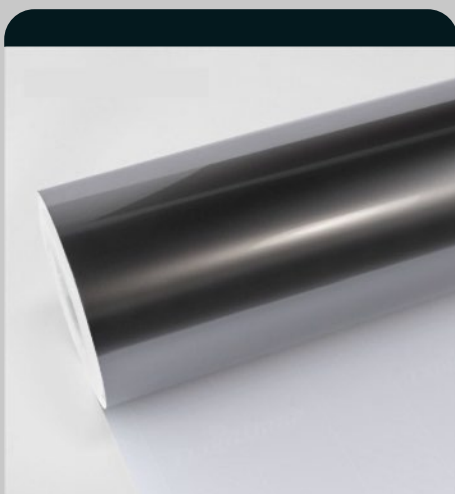
Golden Yellow
SKU: RB25-HD



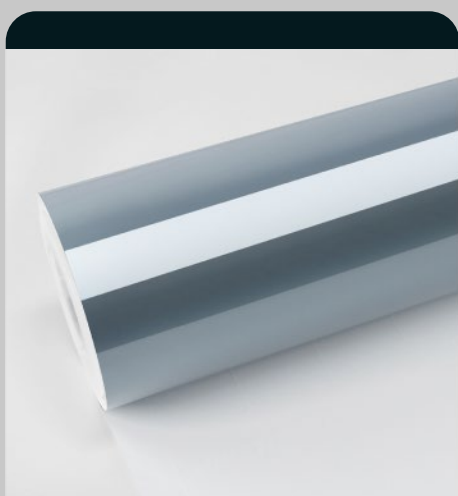
Ruby Green
SKU: RB26-HD



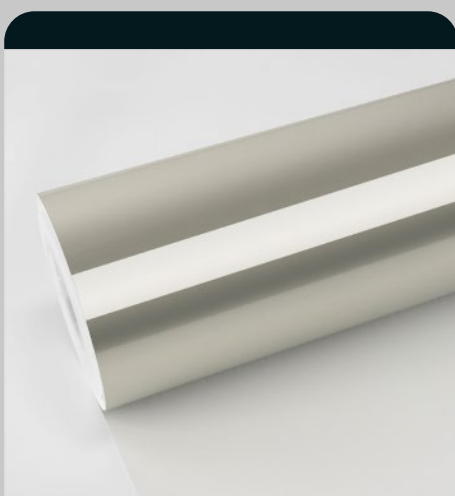
Arctic Silver
SKU: RB27-HD



Vibrant Nickel
SKU: RB28-HD



Grau Pearl
SKU: RB30-HD

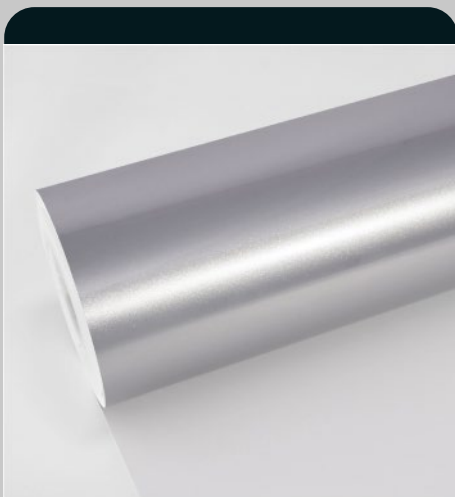


Silver Fern
SKU: RB31-HD

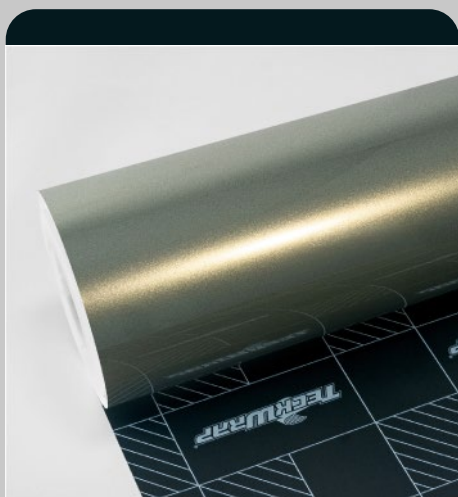
GLASS METALLIC



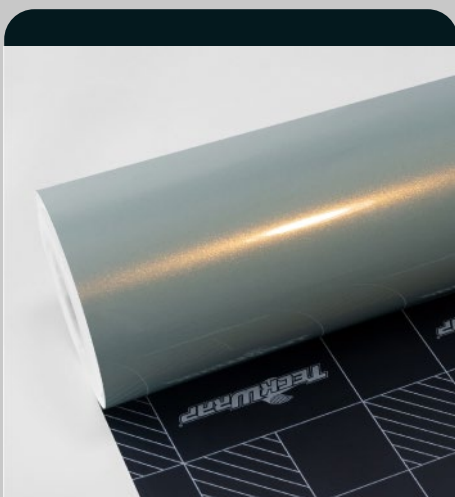
Deep Onix
SKU: RB32-HD



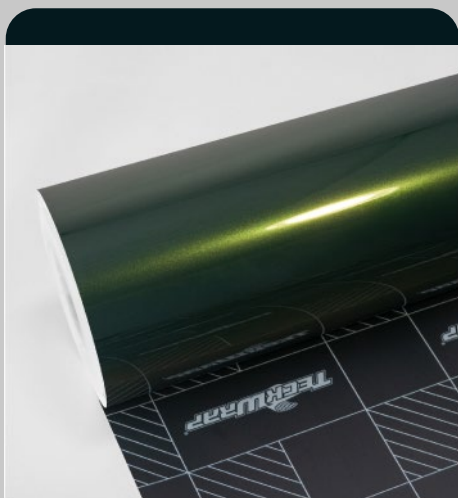
Dolomite Silver
SKU: RB33-HD



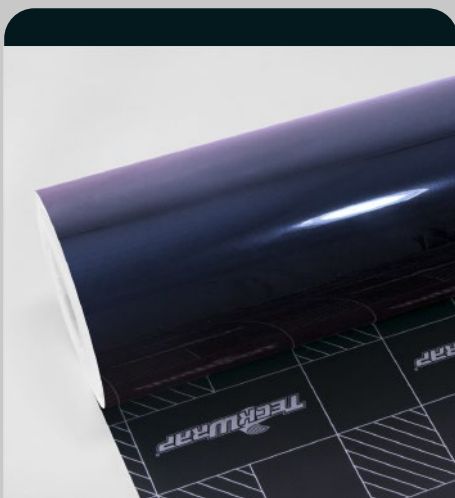
Wilderness Green
SKU: RB35-HD



Palladian Blue
SKU: RB36-HD



Phantom Green
SKU: RB37-HD

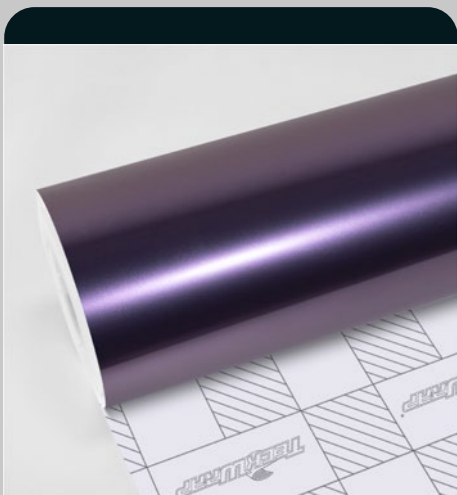


Deep Purple Blue
SKU: RB38-HD

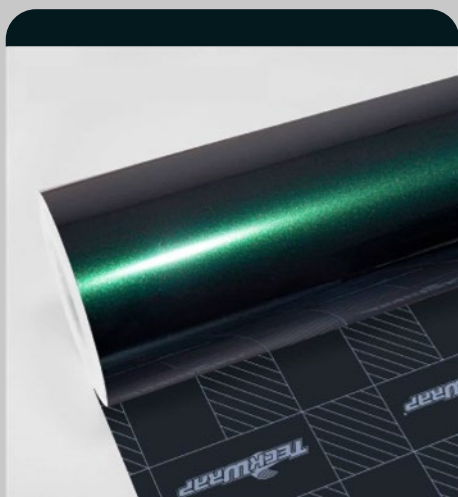
GLASS METALLIC



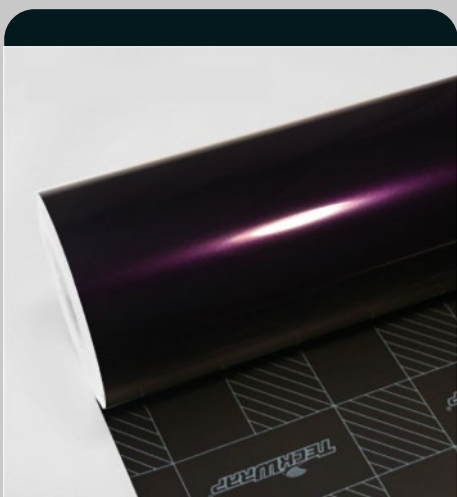
Dragon Green
SKU: RB39-HD



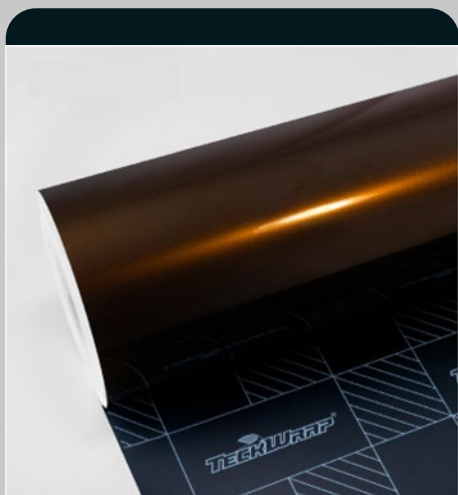
Titanium Violet
SKU: RB40-HD



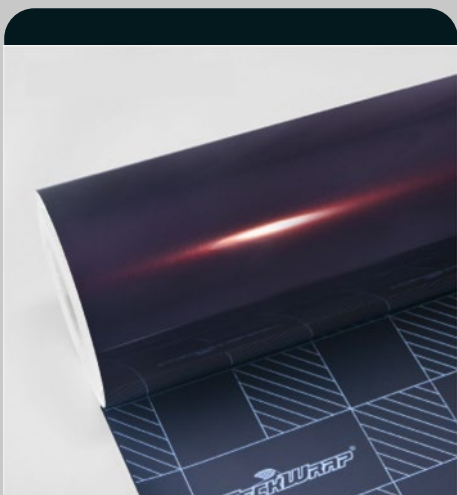
Gloss Green Black
SKU: HM07-HD



Black Cherry Ice
SKU: HM08-HD



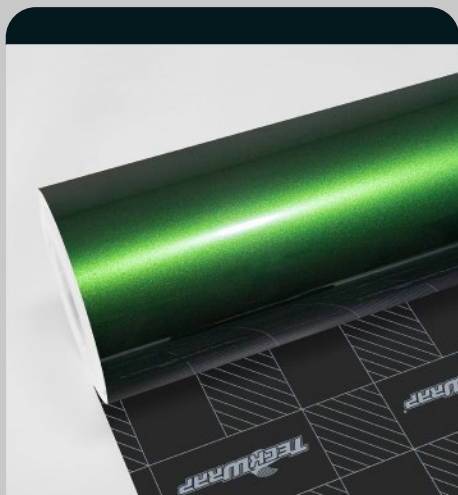
Black Gold
SKU: HM09-HD



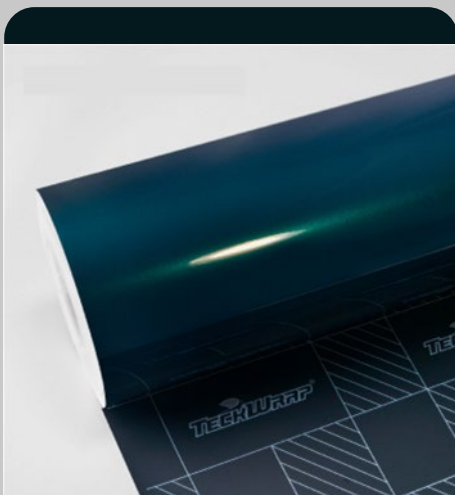
Burgundy Black
SKU: HM10-HD

GLASS METALLIC

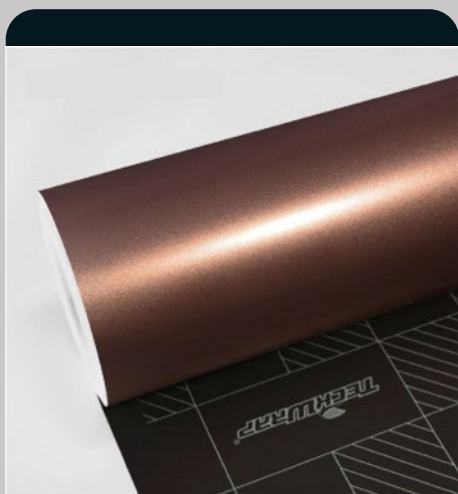
TECKWRAP



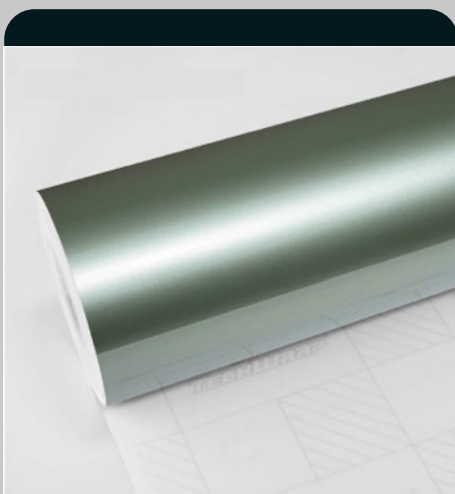
Sonoma Green
SKU: HM12-HD



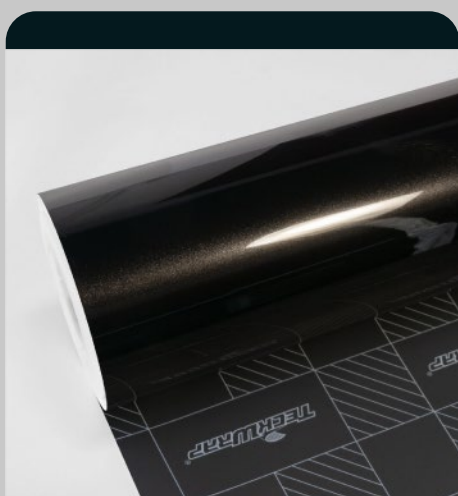
Sherwood Green
SKU: HM14-HD



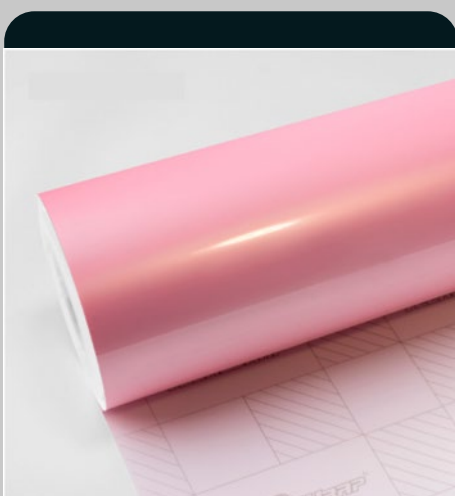
Copper Bronze
SKU: HM15-HD



Antique Green
SKU: HM16-HD



Gloss Coal Black
SKU: MT01-HD



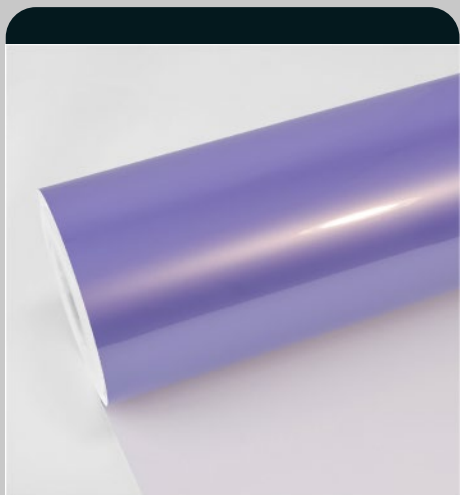
Pink Sakura
SKU: SL01-HD

GLASS METALLIC

Roll Size: 1.52m*18m (59.8"*708.6", 4.98ft*59ft, 1.66yd*19.6yd)

Please visit www.teckwrap.com for product specifications and installation instructions.

TECKWRAP



Royal Purple
SKU: SL07-HD

GLASS METALLIC

Roll Size: 1.52m*18m (59.8"* 708,6", 4.98ft*59ft, 1.66yd* 19,6yd)

Please visit www.teckwrap.com for product specifications and installation instructions.

TECKWRAP™



COLOR SHIFT

Rainbow Drift Metallic

With stunning visual effects, color shift vehicle wrap offers an excellent opportunity to stand out. A journey will never become dull when you ride with a wrapped car that constantly changes its appearance.

Whether a gloss surface or matte, a color shift vinyl film presents different colors from every angle, always giving you unpredictable surprises with breathtaking beauties.

Basic Specifications

The thickness of film: 0.16mm

Type of film: High grade polymeric multilayered calendared vinyl film with air release channels

Width & Length: 1.52m*18m (59.8"* 708,6", 4.98ft*59ft, 1.66yd* 19,6yd)

Adhesive: Solvent polyacrylate

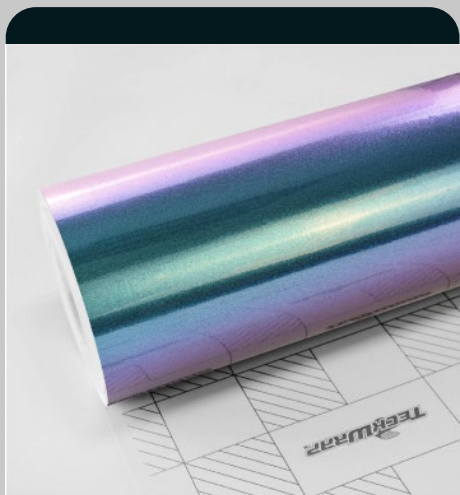
Storing period (shelf life): 2 years if stored in +10°C to +20°C, relative humidity 50%, in original package, away from direct sunlight, clean and dry place

Avg. indoor life: 4 years when followed rules of application and usage

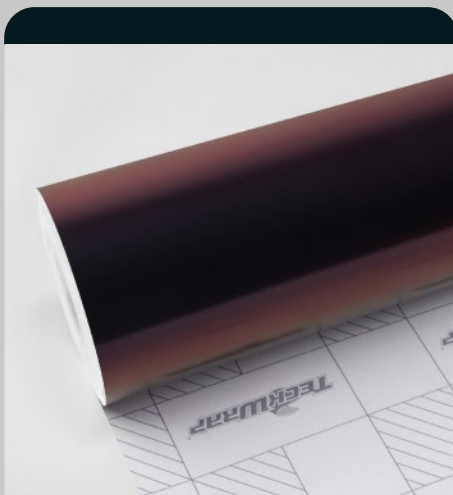
Avg. outdoor life: 3 years when followed rules of application and use

Post-heating temperature: 110°C flat surfaces, 130°C curves, and overlaps

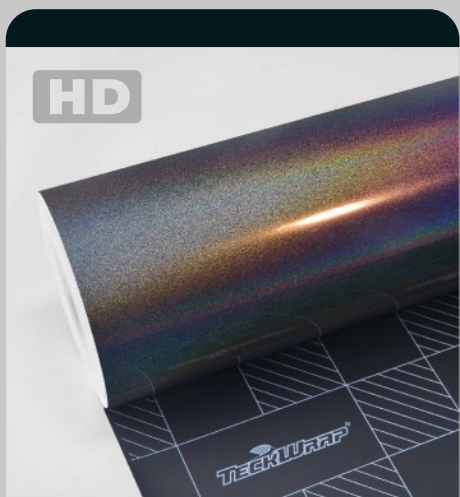
Aftercare: PH neutral, Avoid wax or solvents



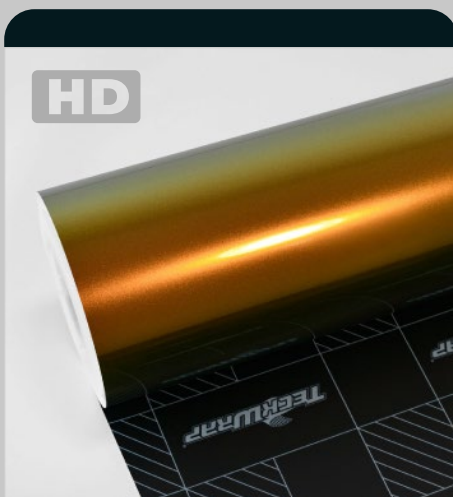
Gloss Purple Blue
SKU: CK892C



Madeira Red Matte
SKU: RD17-M



Rainbow Vortex
SKU: RD11-HD



Honey Lime
SKU: RD12-HD



Ruby Gold
SKU: RD13-HD



Violet Sunrise
SKU: RD14-HD

RAINBOW

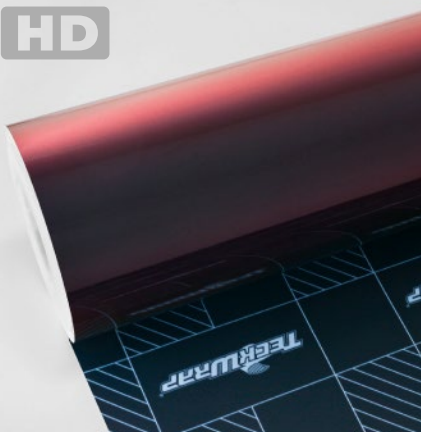
RAINBOW

HD



Green Galaxy
SKU: RD15-HD

HD



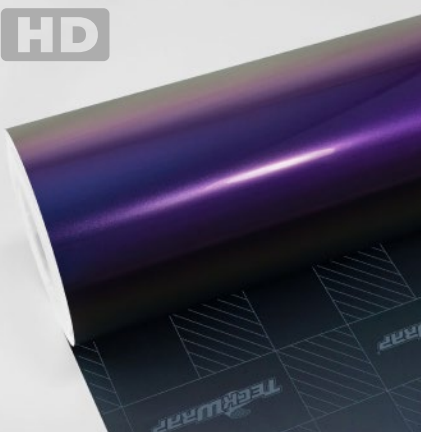
Madeira Red
SKU: RD17-HD

HD



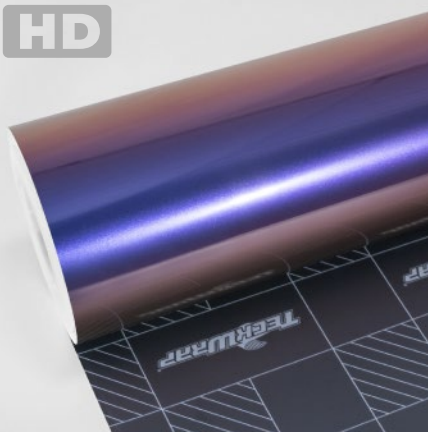
Crazy Grape
SKU: RD18-HD

HD



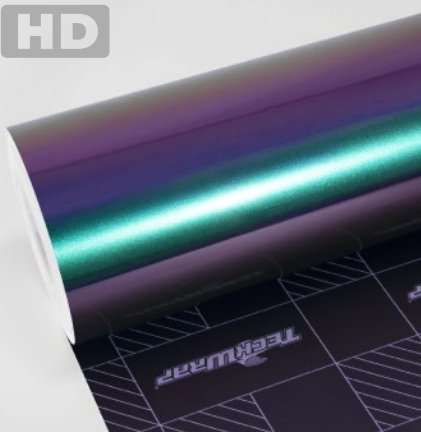
Purple Green
SKU: RD19-HD

HD



Purple Sunset
SKU: RD20PRO-HD

HD



Purple Flame
SKU: RD21PRO-HD

TECKWRAP™



**SUPER
GLITTER**

Super Glitter

With a collection of elegant colors, TeckWrap offers you this series of color-shift vinyl wraps, which give your vehicle an elegant finish. As a proud supplier, TeckWrap has plenty of film selections with good conformability and durability. The material is stretchable enough to wrap every edge and recessed area easily. And the adhesive is safe without giving you any trouble when uninstalling. The better thing is these vinyl wraps from TeckWrap are all of the high quality but reasonable and affordable price.

Basic Specifications

The thickness of film: 0.15mm

Type of film: High grade polymeric calendered vinyl film with air release channels

Glue: Henkel solvent based adhesive

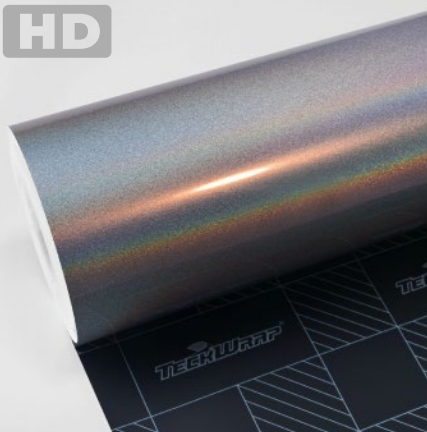
Storing period: 2 years if stored in +10°C to +20°C, relative humidity 50%, in original package, away from direct sunlight, clean and dry place

Indoor life: 4 years when followed rules of application and use

Outdoor life: 3 years when followed rules of application and use

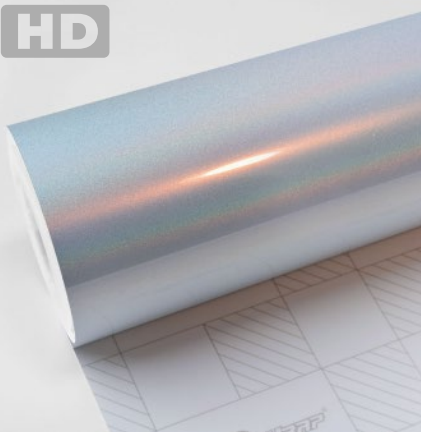
REEL SUPPLY

HD



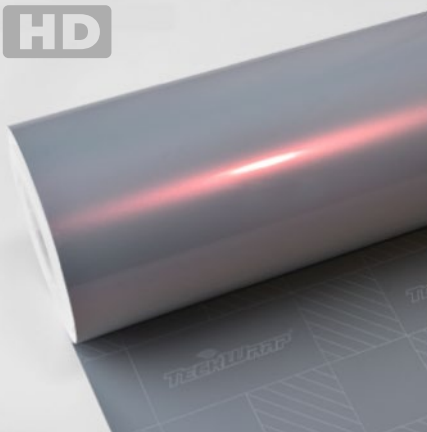
Silver Fireworks
SKU: RCH01-HD

HD



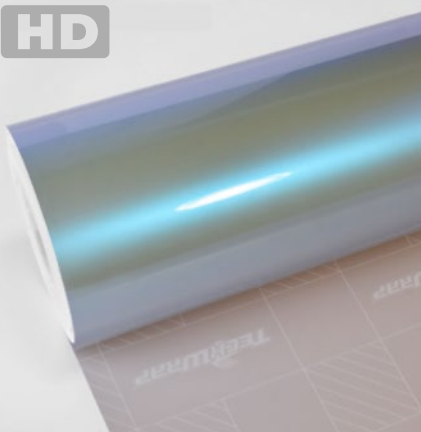
Niigata White Fireworks
SKU: RCH03-HD

HD



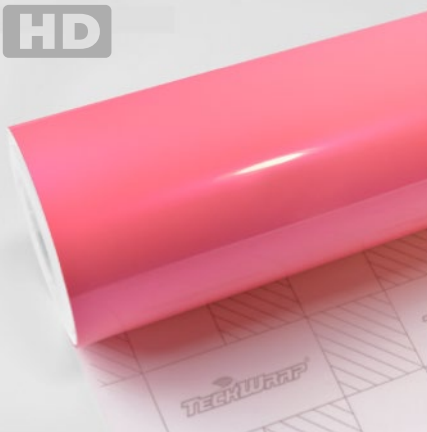
Silver Sunset
SKU: DS03-HD

HD



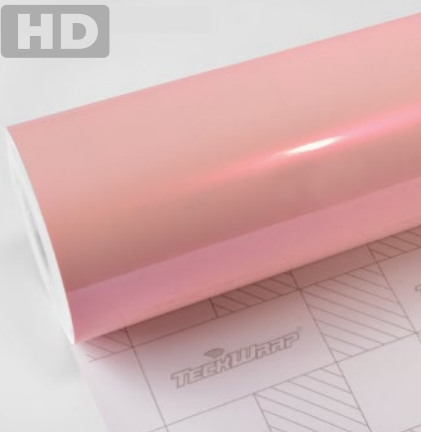
Azure Maya Blue
SKU: DS04-HD

HD



Wild Heather
SKU: DS05-HD

HD



Maize Pink
SKU: DS06-HD

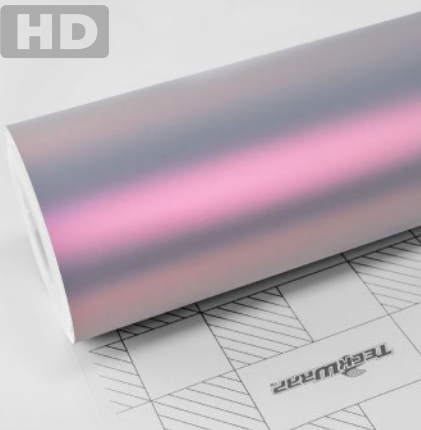
REPLACEMENT FILMS

HD



Frosted Tulip
SKU: DS07-HD

HD



Silver Sunset Matte
SKU: DS03M

TECKWRAP™



**MATTE
METALLIC**

Matte Metallic

TeckWrap offers you this series of matte metallic vinyl wrap with the eggshell finish, which gives your vehicle a subtle look of metallic steel with a flat finish. And with TeckWrap, there is a wide variety for you to choose from. Pick one today and feel the difference!

Basic Specifications

The thickness of the film: 0.16mm

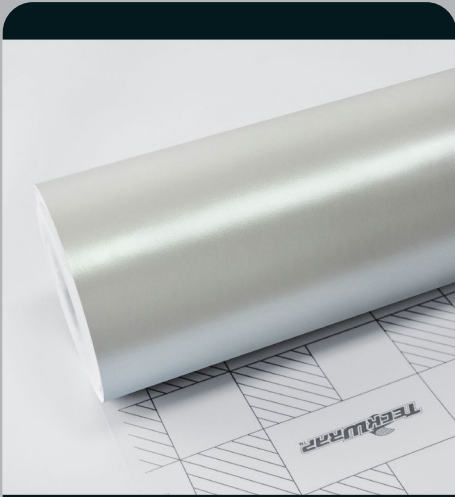
Type of film: High grade polymeric calendared vinyl film with air release channels

Adhesive: Henkel solvent-based acrylic adhesive

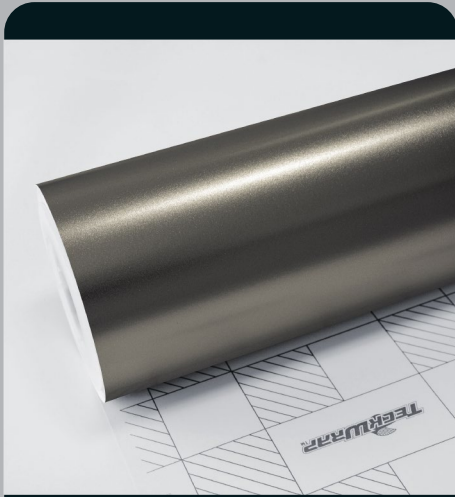
Storing period: 3 years if stored in +10°C to +20°C for optimal quality, relative humidity 50%, in original package, away from direct sunlight, clean and dry place

Indoor life: 5 years when followed rules of application and use

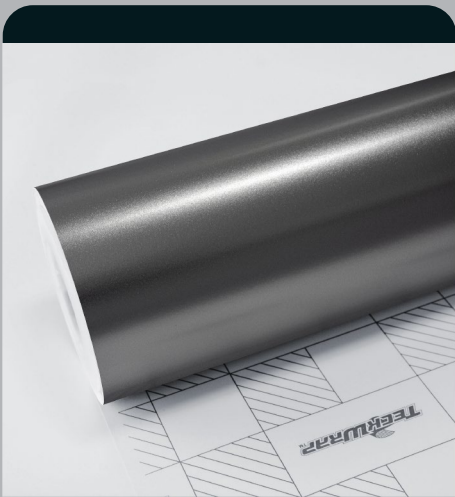
Outdoor life: 3 years when followed rules of application and use



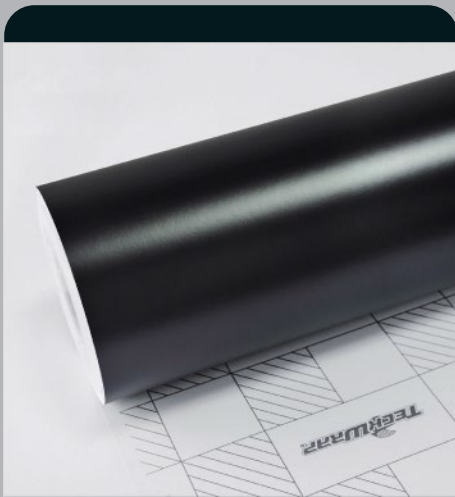
Satin Perl White
SKU: ECH01



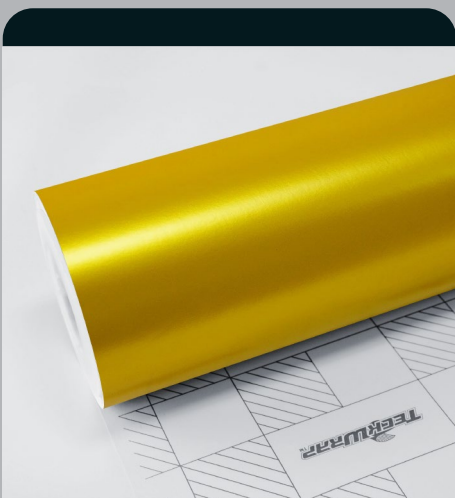
Gunsmoke Grey
SKU: ECH02



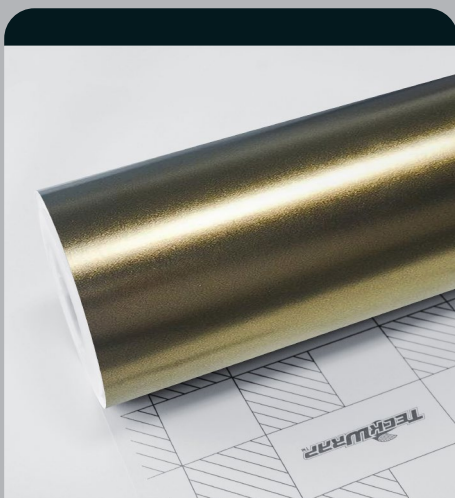
Charcoal Grey
SKU: ECH03



Navy Black
SKU: ECH15



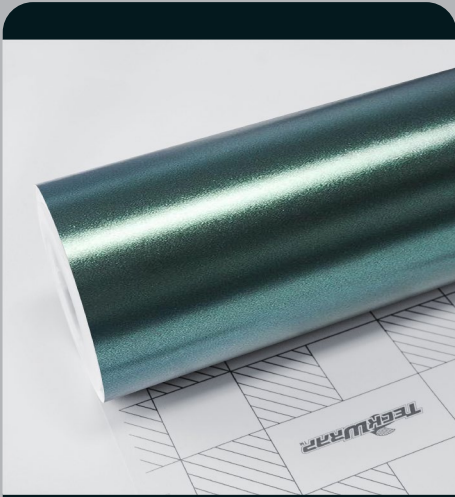
Hornet Yellow
SKU: ECH16



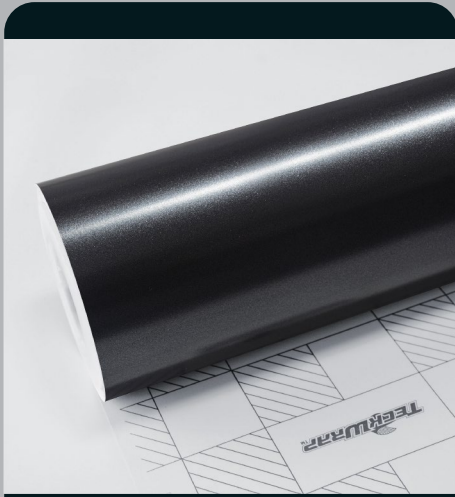
Bond Gold
SKU: ECH17

MATTE METALLIC

TECKWRAP



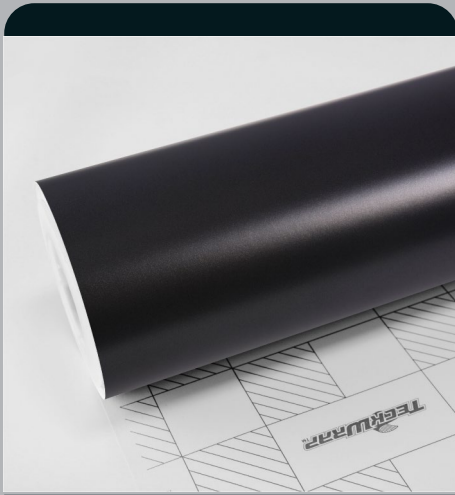
Forest Green
SKU: ECH19



Dark Platinum
SKU: ECH21



Cherry Blossom Pink
SKU: ECH22



Matte Coal Black
SKU: MT01

MATTE METALLIC

Roll Size: 1.52m*18m (59.8"*708.6", 4.98ft*59ft, 1.66yd*19.6yd)

Please visit www.teckwrap.com for product specifications and installation instructions.

TECKWRAP™



**WHITE
CHAMELEONS**

White Chameleons

With a collection of seven gloss and matte colors, you will get a super distinctive finish with this series, where it is partly shady with extraordinary luster. It is THE head-turner among all the running cars on the road. Pick one and enjoy the view!

Basic Specifications

The thickness of film: 0.15mm

Type of film: High grade polymeric calendared vinyl film with air release channels

Glue: Henkel solvent based adhesive

Storing period: 2 years if stored in +10°C to +20°C, relative humidity 50%, in original package, away from direct sun light, clean and dry place

Indoor life: 4 years when followed rules of application and use

Outdoor life: 2 years when followed rules of application and use

Post-heating: 100°C; cure time: 48 hours

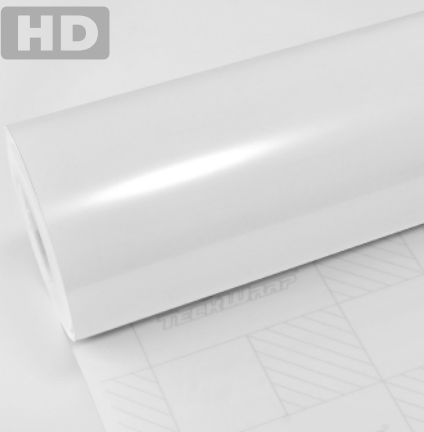
WHITTE CHANNELS

HD



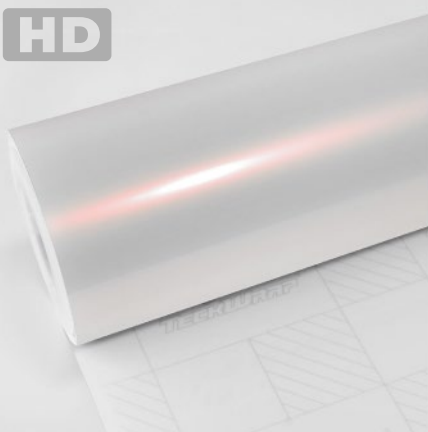
White Satin
SKU: CK903

HD



White Pearl
SKU: CK522-HD

HD



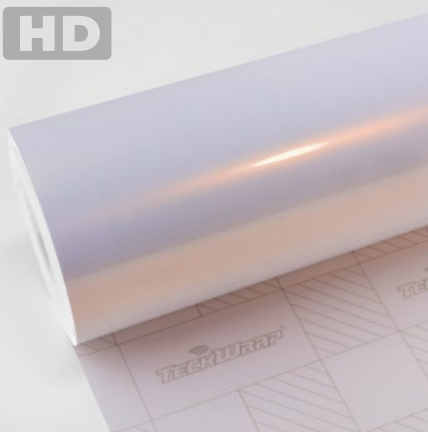
Creamrose Pearl
SKU: CK523-HD

HD



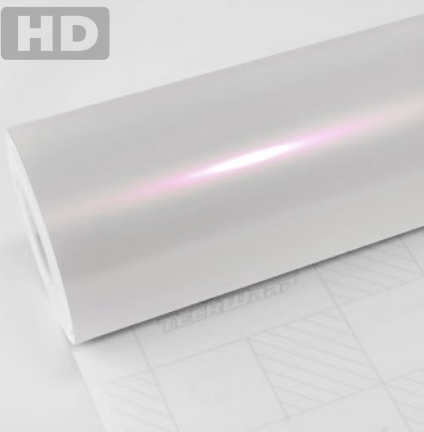
Light Blue Pearl
SKU: CK524-HD

HD



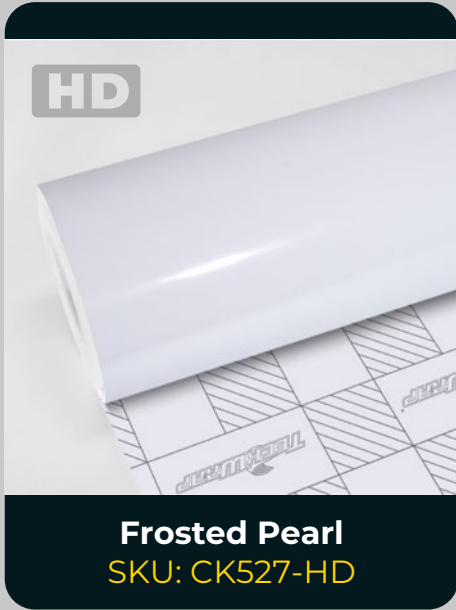
Gold Pearl
SKU: CK525-HD

HD



Lavender Pearl
SKU: CK526-HD

TECKWRAP



Frosted Pearl

SKU: CK527-HD

WHITE CHANNELS

Roll Size: 1.52m*18m (59.8"* 708,6", 4.98ft*59ft, 1.66yd* 19,6yd)

Please visit www.teckwrap.com for product specifications and installation instructions.

TECKWRAP™



**GLOSS
GLITTER**

Gloss Glitter & Diamond

Looks fascinating! The finish shines just like a diamond! Even better, it is not hard to apply. Get your favorite color, and turn your car into the most stunning diamond on the road!

Basic Specifications

The thickness of film: 0.16mm

Type of film: Medium grade polymeric multilayered calendered film with air release channels

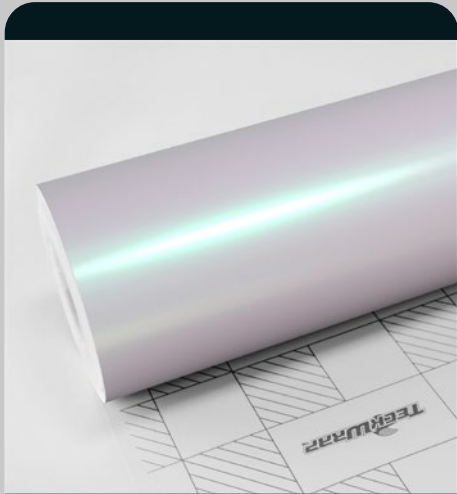
Adhesive: Henkel solvent-based acrylic adhesive

Storing period: 2 years if stored in +10°C to +20°C, relative humidity 50%, in original package, away from direct sunlight, clean and dry place

Indoor life: 5 years when followed rules of application and use

Outdoor life: 3 years when followed rules of application and use

Post heating: 90°C



Matte Aurora White
SKU: DCH02



Aurora White
SKU: DCH02-HD



Ebony Sparkle
SKU: CK202-HD



Diamond White
SKU: CK801-HD

GLASS CUTTER

TECKWRAP™



**HIGH AND
SUPER GLOSS**

High Gloss

TeckWrap offers new gloss HD colors that give your vehicle a solid and shiny finish. Smooth one without any orange peel. The material is stretchable, and one can easily wrap every edge and recessed area. And the adhesive is safe without giving you any trouble when uninstalling. The film has a PET protective layer, which helps avoid scratches during the installation process (it should be peeled off before heating), and a plastic liner makes the film's surface more glossy and reflective.

Basic Specifications

The thickness of the film: 0.11mm **HD:** 0.15mm

Type of film: Medium grade polymeric calendered film with air release channels

Glue: Henkel solvent based adhesive

Storing period: 2 years if stored in +10°C to +20°C, relative humidity 50%, in original package, away from direct sunlight, clean and dry place

Indoor life: 4 years when followed rules of application and use

Outdoor life: 2 years when followed rules of application and use

Postheating: 100 Celcius HD: 95 Celcius

DIY SOL PRE SUP S

HD



Ultimate Black
SKU: CG01-HD

HD



Super White
SKU: CG02-HD

HD



Amazon Grey
SKU: CG03-HD

HD



Racing Red
SKU: CG06-HD

HD



Tiffany
SKU: CG11-HD

HD



Sunflower Yellow
SKU: CG12-HD

DIY SOL PRE CUT S

HD



Slate Grey
SKU: CG16-HD

HD



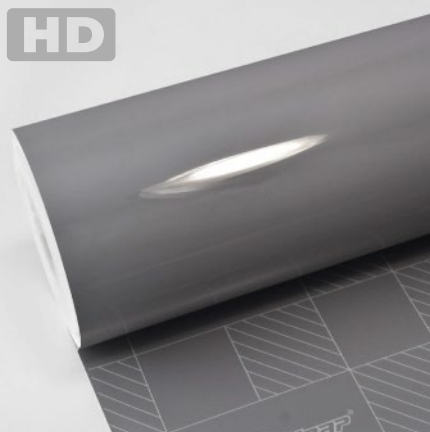
Vibrant Blue
SKU: CG57-HD

HD



Millennial Pink
SKU: CG19-HD

HD



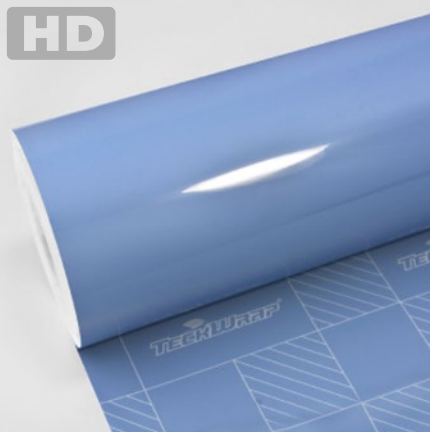
Battleship Grey
SKU: CG20-HD

HD



Rolling Sea
SKU: CG21-HD

HD



China Blue
SKU: CG22-HD

A close-up photograph of a roll of white paper, possibly a paper towel or napkin, with a prominent yellowish-brown stain. The stain is elongated and has a darker, more saturated center. The paper is partially unrolled, showing its texture and the edge of the roll. The background is a light-colored surface with a subtle grid pattern.

Mossy Green
CG23-HD

Lava Orange
SKU: CG24-HD

Chelsea Rose
SKU: CG25-HD

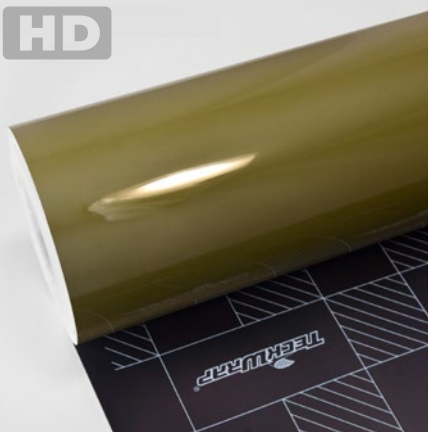
Ivory Cream
SKU: CG26-HD

True Nardo Grey
SKU: CG27-HD

Yacht Blue
SKU: CG28-HD

DIY SOLUBLE TAPES

HD



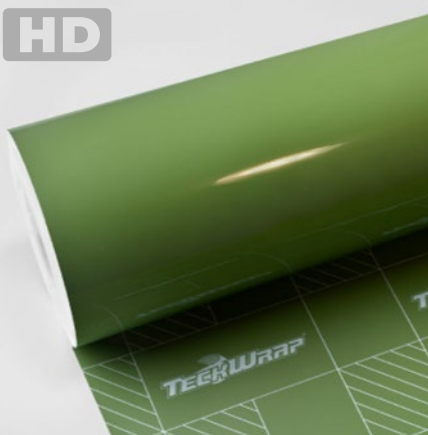
Khaki Green
SKU: CG29-HD

HD



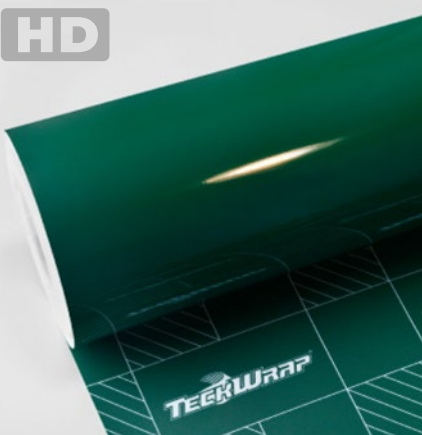
Pale Celadon
SKU: CG30-HD

HD



French Olive
SKU: CG31-HD

HD



Amphibian Green
SKU: CG32-HD

HD



Sorbet Pink
SKU: CG59-HD

HD



Vanilla Mist
SKU: CG60-HD



Baby Blue
SKU: CG58-HD



Amber Rose
SKU: CG36-HD



Bali Blue
SKU: CG37-HD



British Racing Green
SKU: CG38-HD



Monsoon Green
SKU: CG39-HD



Tangerine Orange
SKU: CG40-HD

SHOTS PRESENTS

HD



Gecko Green
SKU: CG41-HD

HD



Grape Green
SKU: CG42-HD

HD



Louvre Yellow
SKU: CG43-HD

HD



Sunray Yellow
SKU: CG44-HD

HD



Amberwave
SKU: CG45-HD

HD



Sahara Beige
SKU: CG46-HD

DIY SOTG SUPPLIES

HD



Vintage Grey
SKU: CG47-HD

HD



Spanish Lavender
SKU: CG48-HD

HD



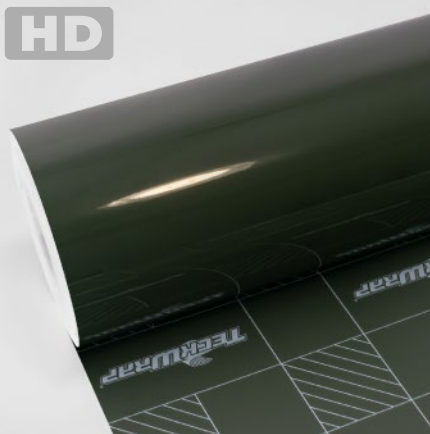
Berry Red
SKU: CG49-HD

HD



Strawberry Milk
SKU: CG50-HD

HD



Camouflage Green
SKU: CG51-HD

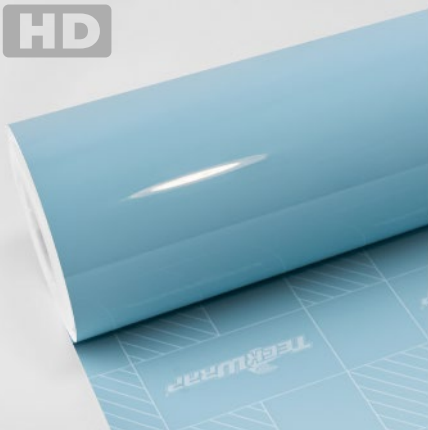
HD



Leather Beige
SKU: CG52-HD

DIY SOTL SUPERS

HD



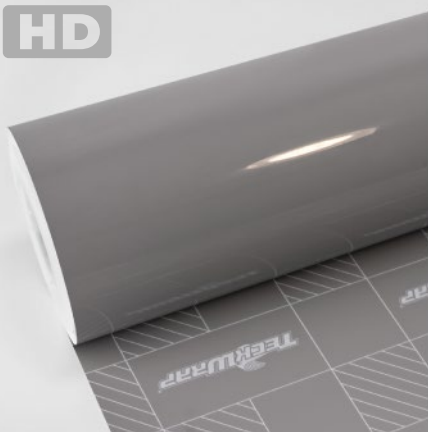
Cool Blue
SKU: CG53-HD

HD



Papaya Orange
SKU: CG54-HD

HD

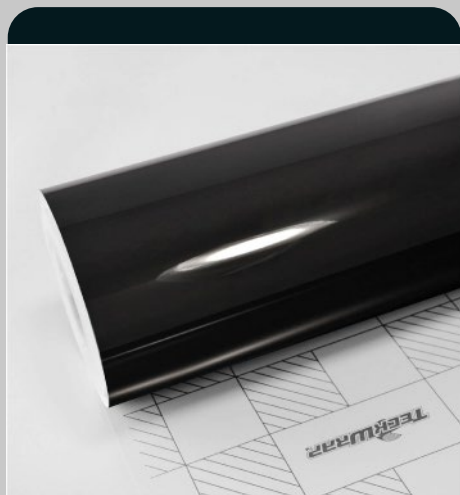


Wild Dove
SKU: CG55-HD

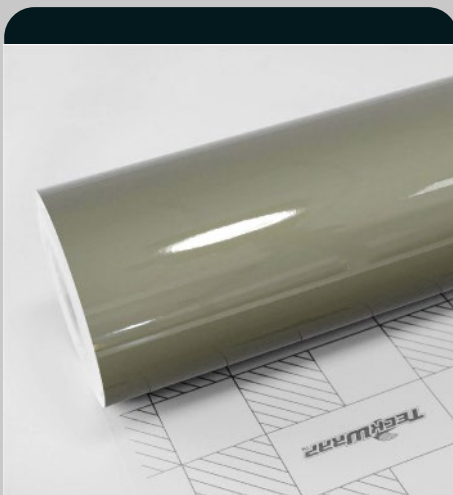
HD



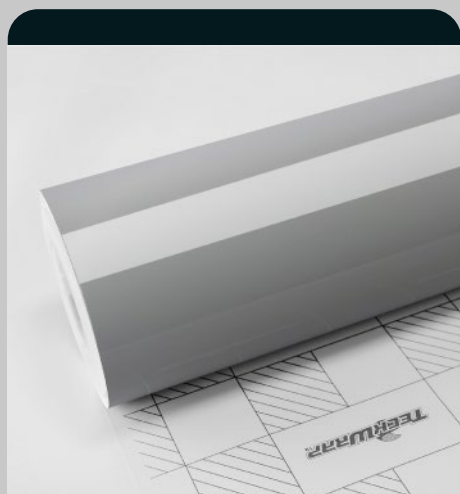
Flamingo Pink
SKU: CG56-HD



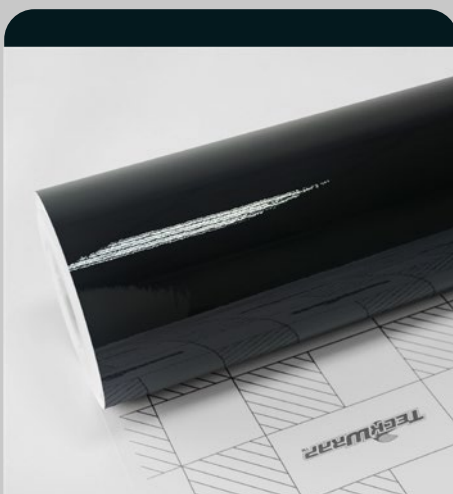
Top Coated Super Black
SKU: CG01-SH



Top Coated Moss Green
SKU: CG23-SH



Top Coated Vinage Grey
SKU: CG47-SH



Black
SKU: CG01

SOLO BEARS

TECKWRAPTM



**SUPER
MATTE**

Super Matte

It is not too glossy but with modest lustrous. With its subtle solid look, you will have a perfect distinctive flat finish. With TeckWrap, you have a wide range of selection to choose from. Take your pick and enjoy the difference!

Basic Specifications

The thickness of film: 0.12mm

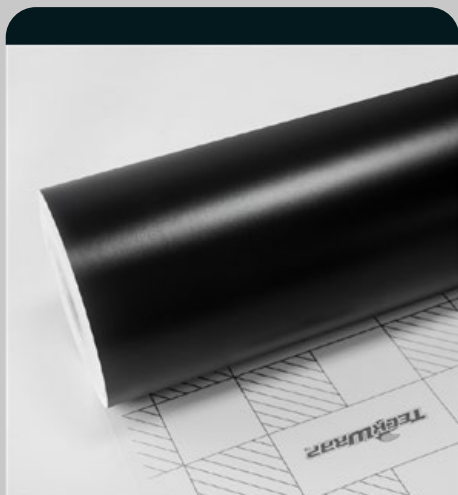
Type of film: Medium grade polymeric calendered film with air release channels

Glue: Henkel solvent based adhesive

Storing period: 3 years if stored in +10°C to +20°C, relative humidity 50%, in original package, away from direct sunlight, clean and dry place

Indoor life: 5 years when followed rules of application and use

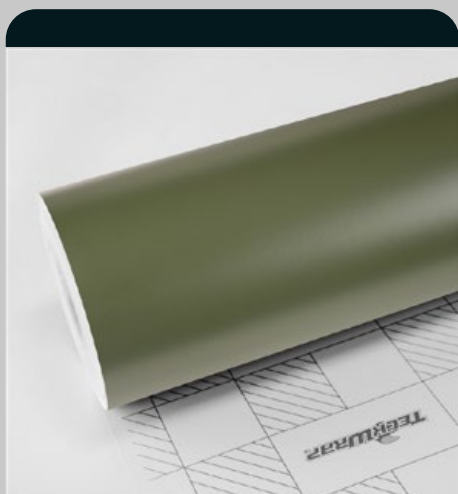
Outdoor life: 3 years when followed rules of application and use



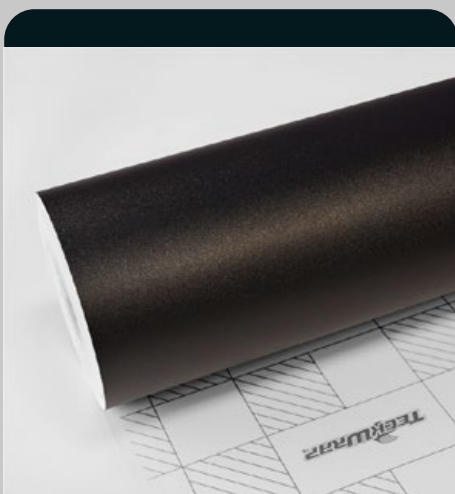
Black
SKU: CM01M



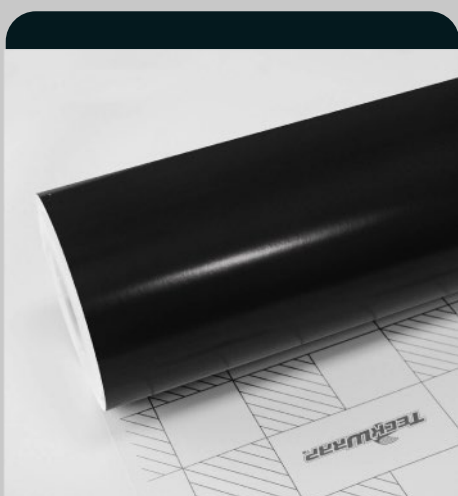
White
SKU: CM02



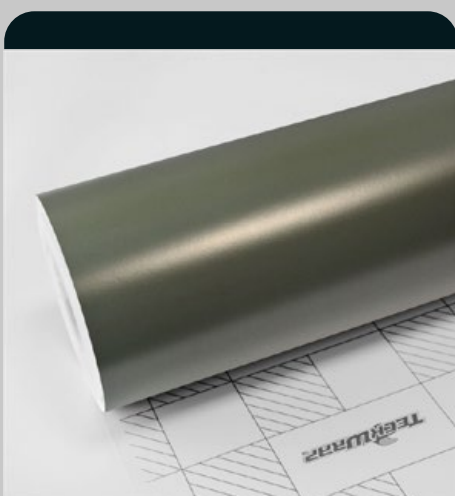
Military Green
SKU: CM09



Sandy Black
SKU: CM01-MS

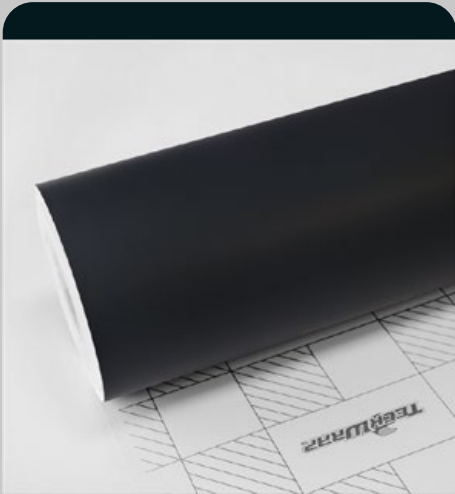


Sable Black
SKU: TC01



Piniengruen Pearl
SKU: TC02

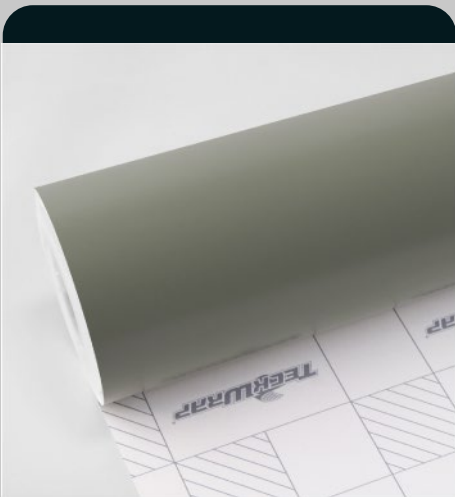
PREMATE



Deep Black
SKU: SCM01



Alaska White
SKU: SCM02



Lizard Grey
SKU: SCM23



Nickel Grey
SKU: SCM27



Vanilla Cream
SKU: SCM26-R

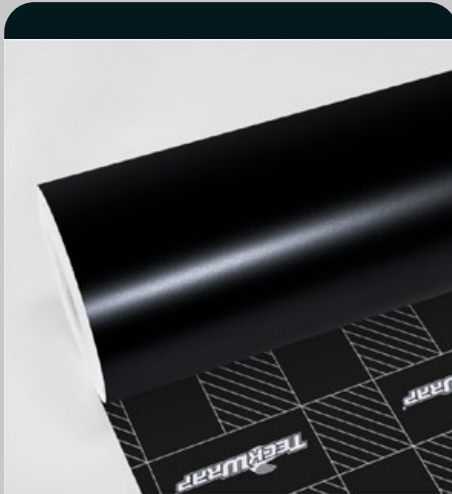


Autumn Blaze
SKU: SCM36

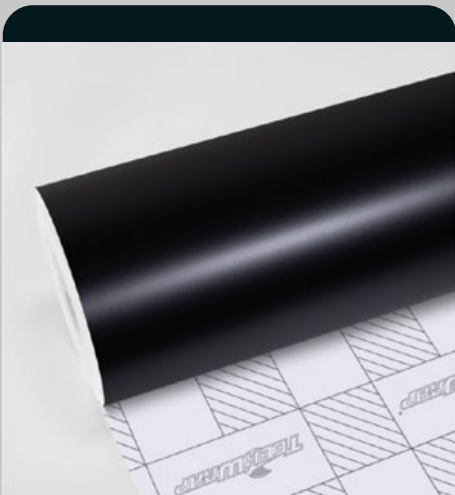
PREMATE



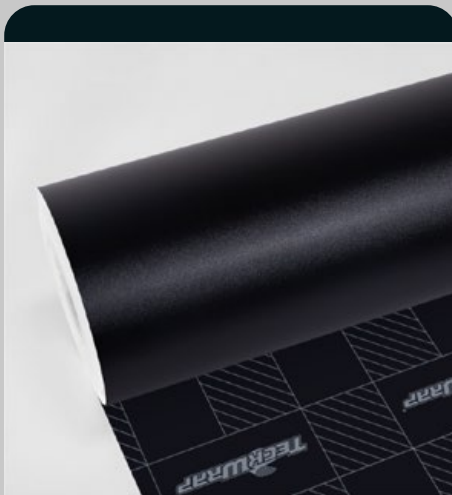
Granite Grey
SKU: SCM47



Pearl Black
SKU: CM15



Raven Black
SKU: CM14



Grainy Black
SKU: CM02-MS

TECKWRAP SUPERMATE

TECKWRAP™



**MIRROR
CHROME**

Mirror Chrome

Reflective and lustrous, your car will be drawing people's eyes, because Mirror Chrome looks so much more aesthetic and attractive. More than just the mirroring effect, with TeckWrap, you have a lot of colors to choose from. Make your choice, and start lighting up the road!

Basic Specifications

The thickness of film: 0.19mm

Type of film: Hybrid vinyl film (silver coating) with air release channels

Adhesive: Henkel solvent based low initial tack adhesive, white and grey

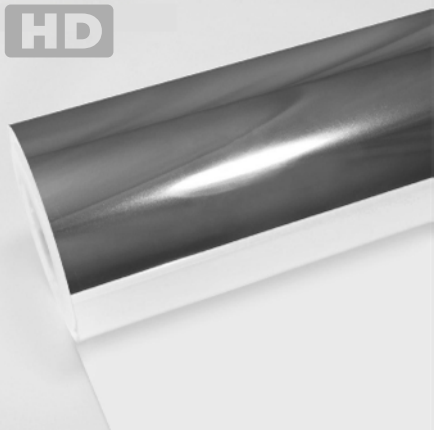
Storing period: 3 years if stored in +10°C to +20°C, relative humidity 50%, in original package, away from direct sunlight, clean and dry place

Indoor life: 4 years when followed rules of application and use

Outdoor life: 1-2 years when followed rules of application and use. Durability depends on the surface and climate zone.

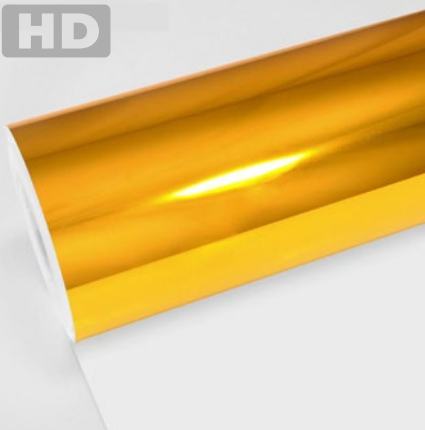
MIRROchrome

HD



White Gold
SKU: CHM01-HD

HD



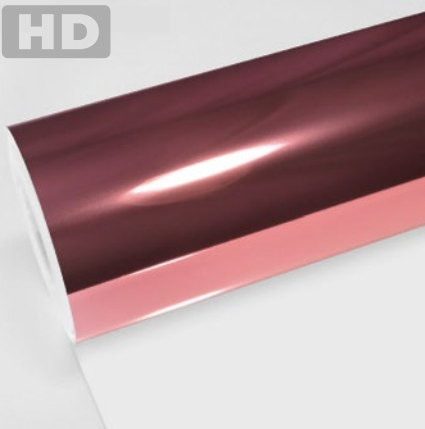
Yellow Gold
SKU: CHM02-HD

HD



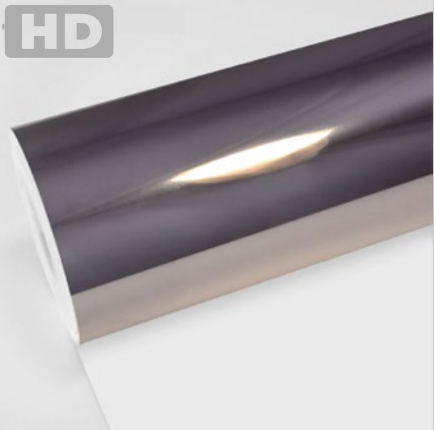
Cherry Red
SKU: CHM04-HD

HD



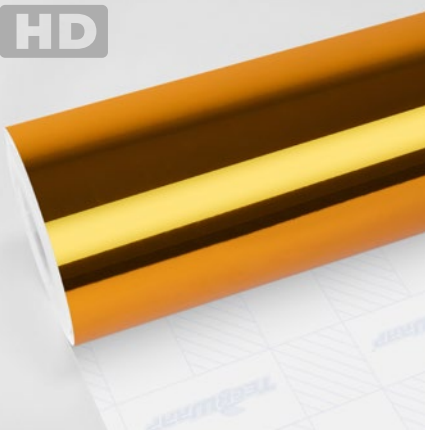
Rose Gold
SKU: CHM03-HD

HD



Jet Black
SKU: CHM10-HD

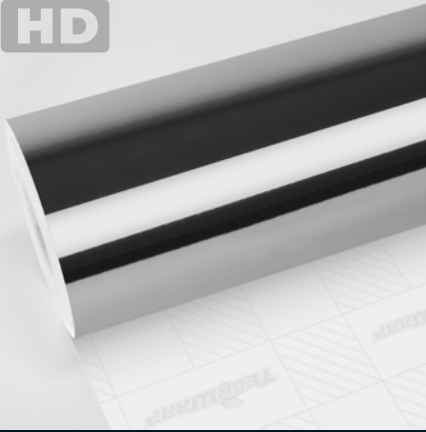
HD



Solar Gold
SKU: CHM21-HD

TECKWRAP

HD



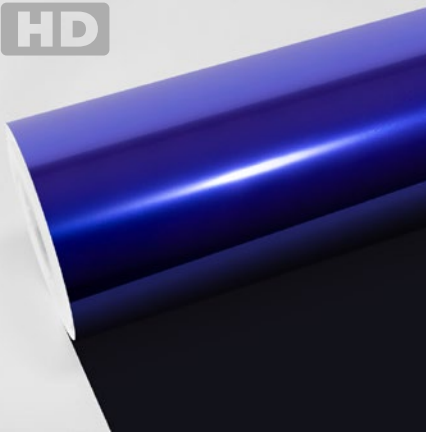
Crystal Chrome
SKU: CHM22-HD

HD



Inferno Red
SKU: CHM24-HD

HD



Nova Blue
SKU: CHM26-HD

MIRROR CHROME

Roll Size: 1.52m*18m (59.8"* 708,6", 4.98ft*59ft, 1.66yd* 19,6yd)

Please visit www.teckwrap.com for product specifications and installation instructions.

TECKWRAP™



**SATIN
CHROME**

Satin Chrome

Also known as a semi-gloss or luster film, the appearance of Satin Chrome is halfway between matte and gloss, a perfect choice for those who want something posh and elegant. And with a wide collection of colors to choose from, your car is going to be the most eye-catching thing running on the road. So why not take your pick with us now?

Basic Specifications

The thickness of film: 0.10mm

Type of film: Polymeric vinyl film (silver coating) with new air release channels

Glue: Henkel solvent based adhesive

Storing period: 3 years if stored in +10°C to +20°C, relative humidity 50%, in original package, away from direct sunlight, clean and dry place

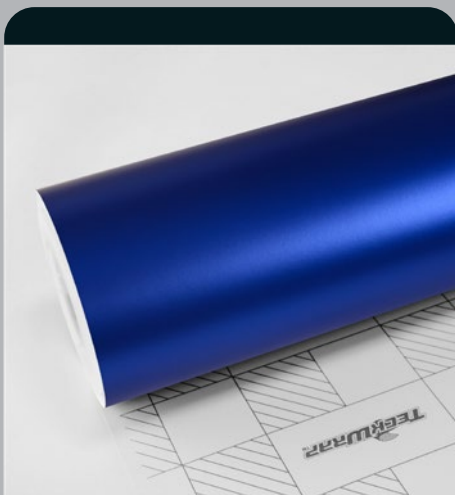
Indoor life: 4 years when followed rules of application and use

Outdoor life: 2 years when followed rules of application and use

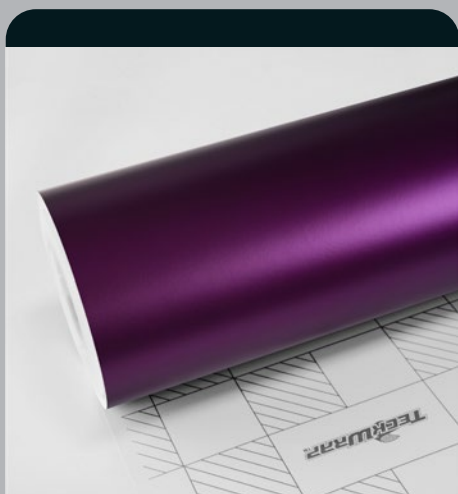
Post-heating: 90 Celcius. Cure time: 48 hours



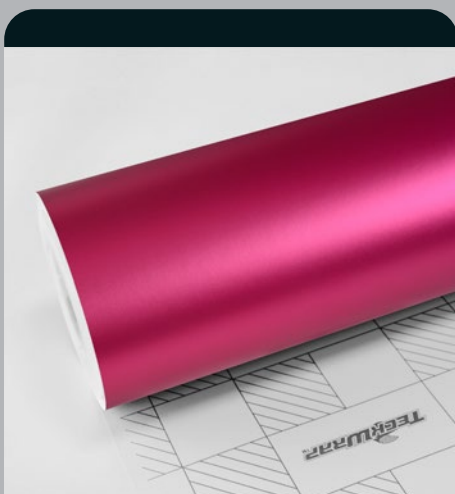
Crimson Red
SKU: VCH401-S



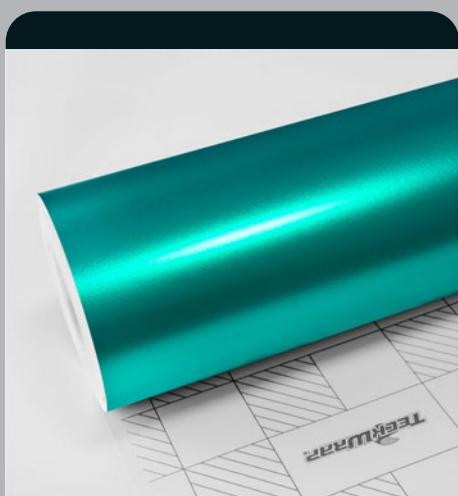
Velvet Blue
SKU: VCH402-S



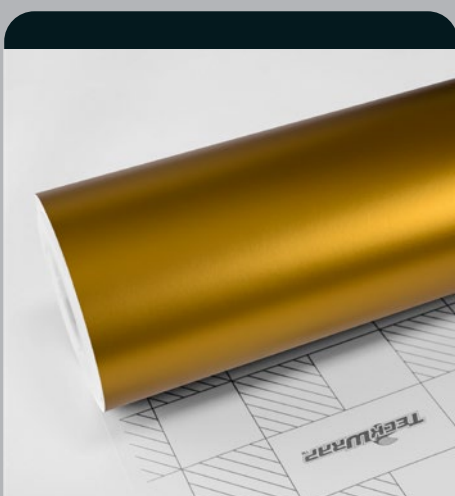
Concord Grape
SKU: VCH403-S



Hot Pink
SKU: VCH404-S

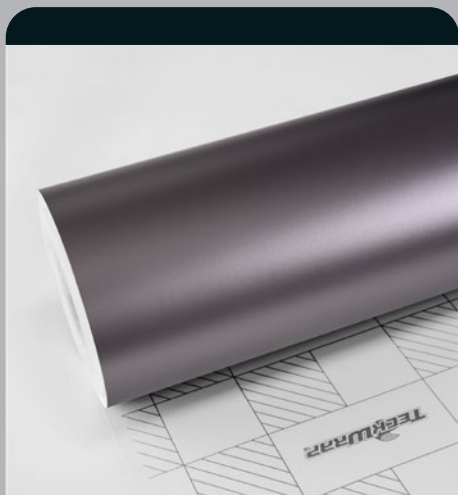


Emerald Green
SKU: VCH405-S



Golden Yellow
SKU: VCH408-S

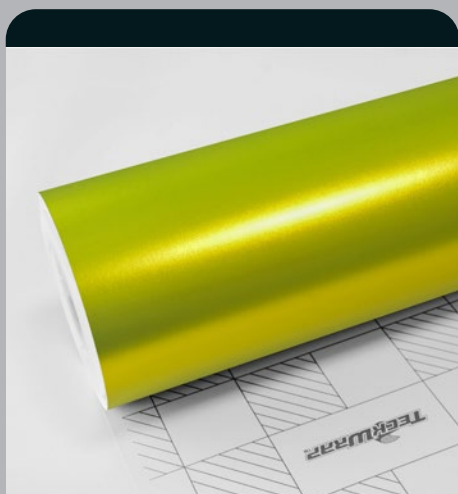
SATCHROME



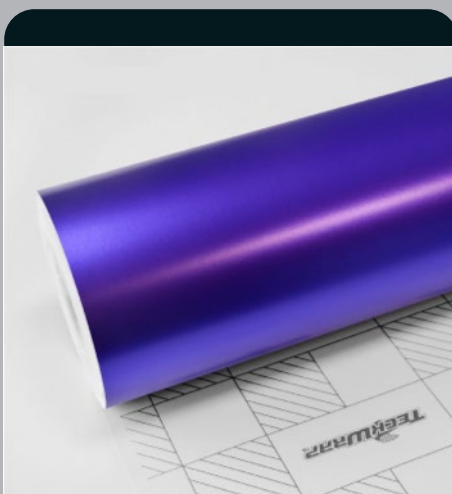
Gunmetal Grey
SKU: VCH410-S



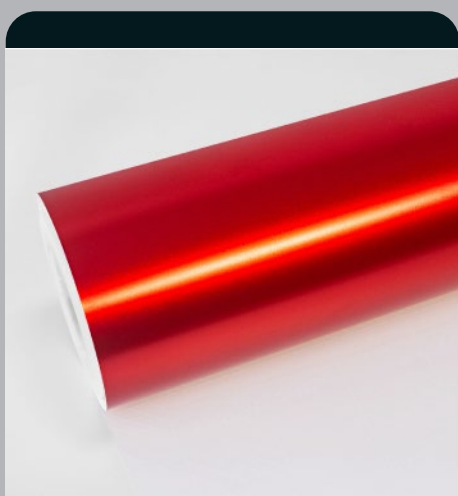
Super Silver Sage
SKU: VCH411-S



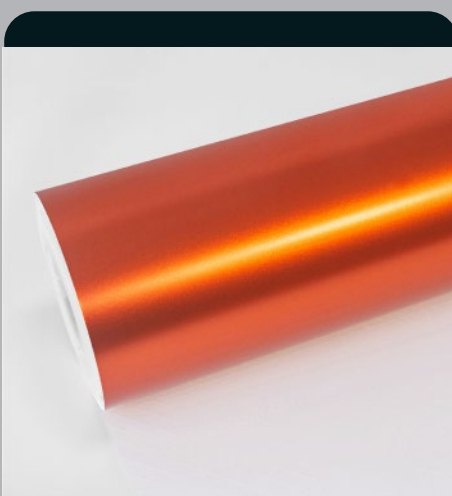
Lemon Yellow
SKU: VCH412-S



Violet Purple
SKU: VCH416-S

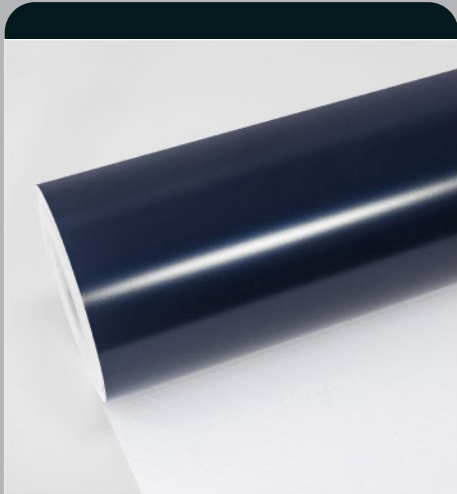


Carmine Red
SKU: VCH417-S

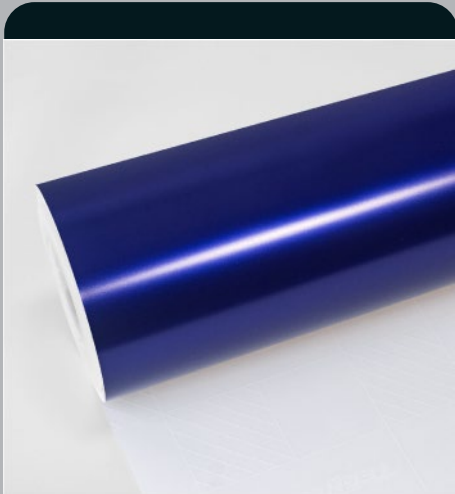


Autumn Orange
SKU: VCH418-S

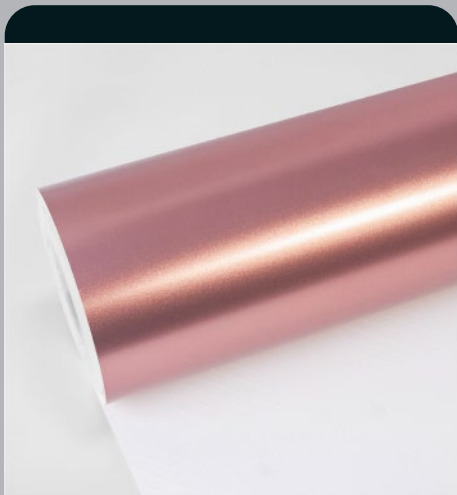
SATCHROME



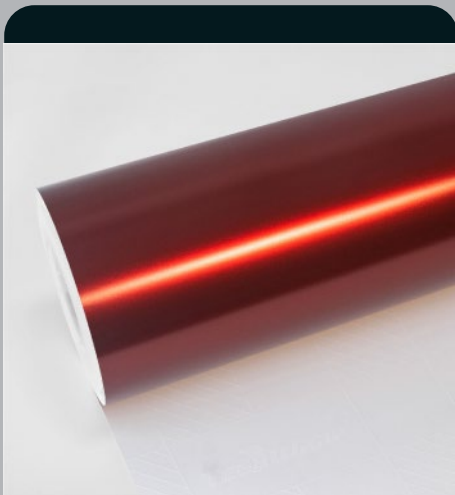
Deep Cobalt
SKU: VCH419-S



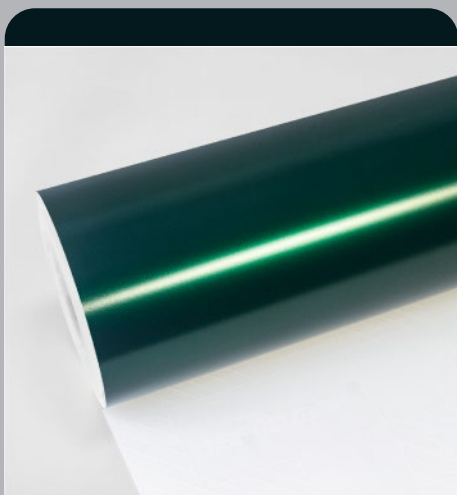
Lapis Blue
SKU: VCH420-S



Antique Rose
SKU: VCH421-S



Sangria Red
SKU: VCH422-S



Gable Green
SKU: VCH423-S

SATELLITE CHROME

TECKWRAP™



**NEO
CHROME**

Neo Chrome

Mystic chrome represents its product name. It creates some mystic, like in a wonderland. With each of the five colors of neochrome, you will have different ideas about five fairylands. It is recommended for partial wrapping on your car. With another film which is relatively more solid on other surfaces, it makes a well bal-

Basic Specifications

The thickness of film: 0.11mm

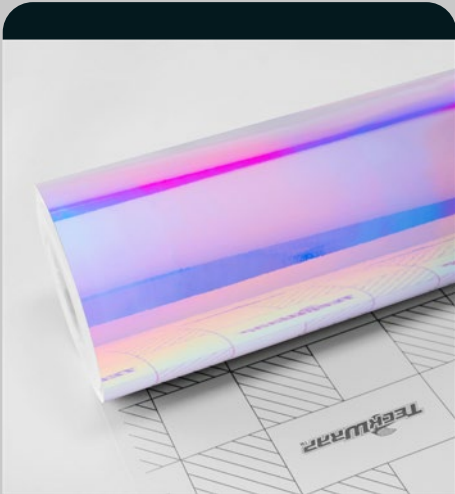
Type of film: PET film with new air release channels

Glue: Henkel solvent based moderate adhesive

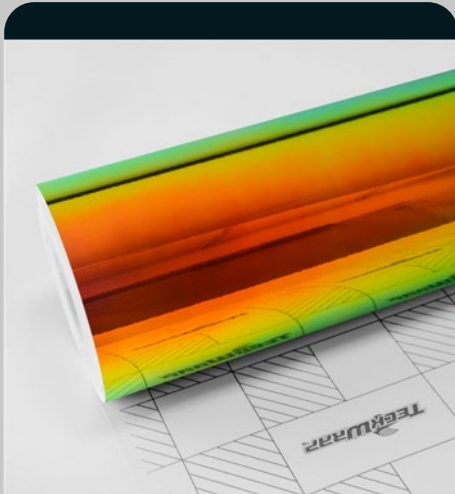
Storing period: 3 years if stored in +10°C to +20°C, relative humidity 50%, in original package, away from direct sunlight, clean and dry place

Indoor life: Up to 3 years when followed rules of application and use

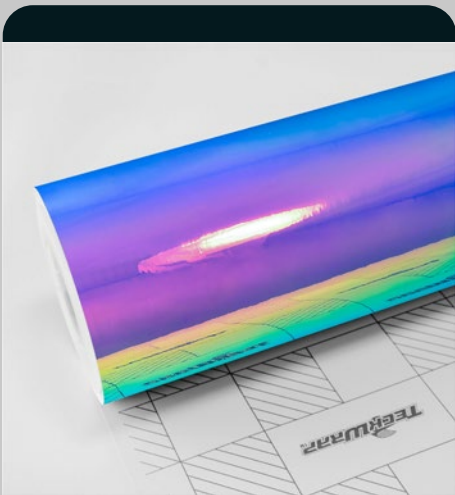
Outdoor life: Up to 1-2 years when followed rules of application and use



Purple Blue Aquamarine
SKU: MCH01



Ammolite Gem
SKU: MCH02



Frozen Berry
SKU: MCH08

TECKWRAP CHROME

TECKWRAP™



**GLOSS
ALUMINUM**

Gloss Aluminum

Humble but elegant, Gloss Aluminum provides you a big collection of colors. Nothing pretentious, but with nothing less, its glory cannot be hidden. With this series, you will be able to create a perfectly stylish outfit for your loving car. Try this out and enjoy the upmarket.

Basic Specifications

The thickness of film: 0.12mm

Width & Length: 1.52m*18m (59.8"* 708,6", 4.98ft*59ft, 1.66yd* 19,6yd)

Adhesive: solvent polyacrylate. TeckWrap high-tech adhesive is save for car paint and has low or moderate initial tack ensuring easy installation.

Storing period (shelf life): 2 years if stored in +10°C to +20°C, relative humidity 50%, in original package, away from direct sunlight, in a clean and dry place.

Indoor life: 4 years.

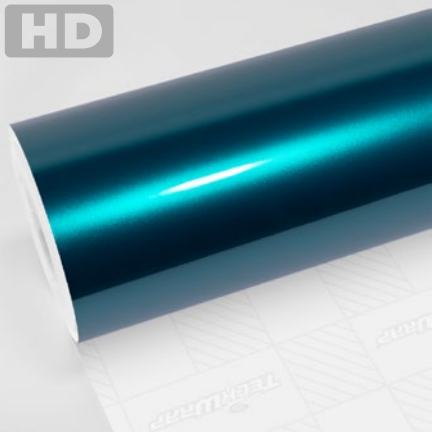
Outdoor life: 3 years when followed rules of application and usage. Mentioned periods are enough for a car wrapping film.

Post-heating: 100°C for flat surfaces and 120°C for curves and overlaps. We recommend a steam vacuum or IRR heater for installation.

Aftercare: PH neutral products. Avoid hot wax or solvents.

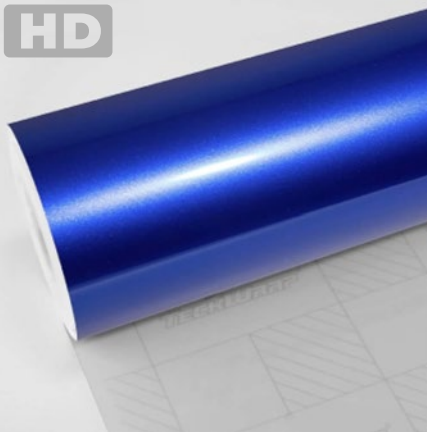
GLOSS MINUM

HD



Azure Flame
SKU: GAL33-HD

HD



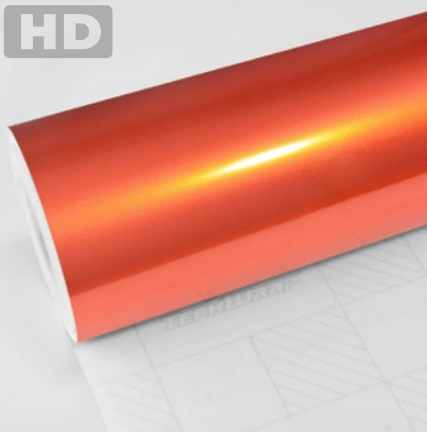
Blue Gem
SKU: GAL02-HD

HD



Candy Purple
SKU: GAL03-HD

HD



Paprika Orange
SKU: GAL06-HD

HD



Super Silver Mist
SKU: GAL11-HD

HD



Space Blue
SKU: GAL14-HD

GLASS MIRROR

HD



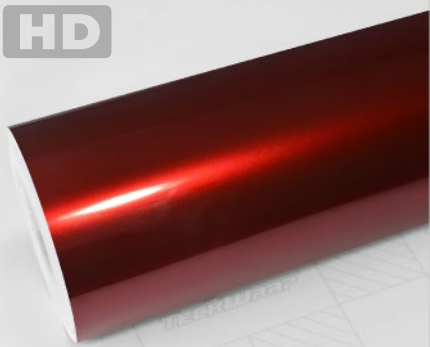
Royal Blue
SKU: GAL19-HD

HD



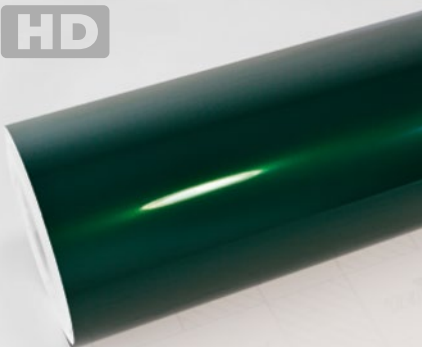
Pink Gold
SKU: GAL23-HD

HD



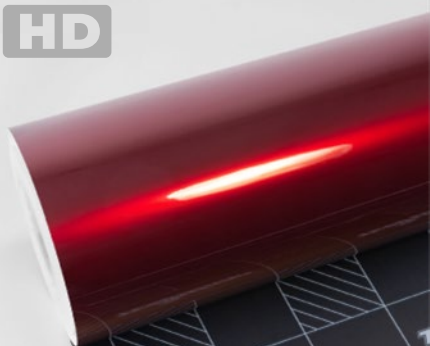
Supreme Red
SKU: GAL26-HD

HD



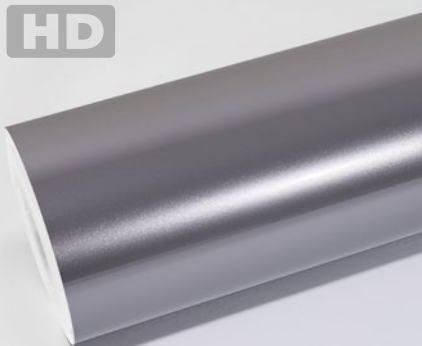
Hunter Green
SKU: GAL29-HD

HD



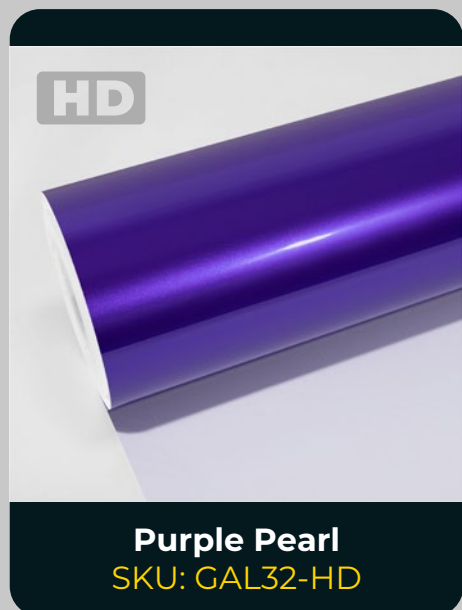
Velvet Red
SKU: GAL30-HD

HD



Atomic Silver
SKU: GAL31-HD

TECKWRAP



Gloss Aluminum

Roll Size: 1.52m*18m (59.8"* 708,6", 4.98ft*59ft, 1.66yd* 19,6yd)

Please visit www.teckwrap.com for product specifications and installation instructions.

TECKWRAP™



**SATIN
METALLIC**

Satin Metallic

Silky and lustrous, the beauty of Satin Metallic is rather quiet and low-key. Self-restraint with graceful bearing, each of the five colors in this series will provide you a somewhat different taste. Try it on and feel the difference!

Basic Specifications

The thickness of film: 0.12mm

Type of film: Pressure sensitive high-grade polymeric vinyl film with air release channels

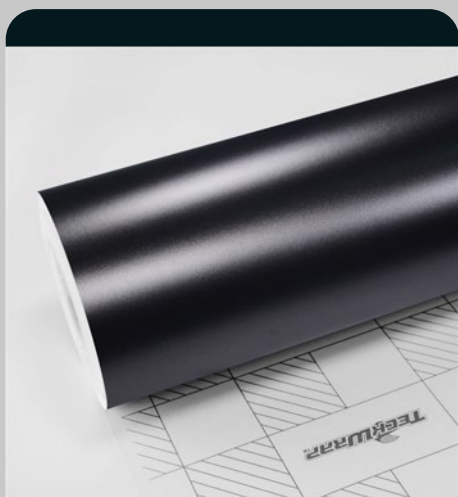
Glue: Henkel solvent-based adhesive

Storing period: 3 years if stored in +10°C to +20°C for optimal quality, relative humidity 50%, in original package, away from direct sunlight, clean and dry place

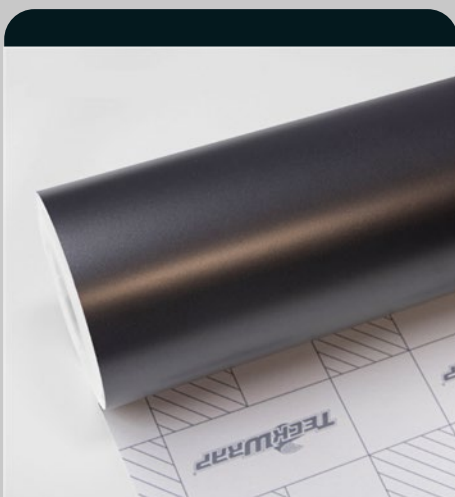
Indoor life: 5 years when followed rules of application and use

Outdoor life: 3 years when followed rules of application and use

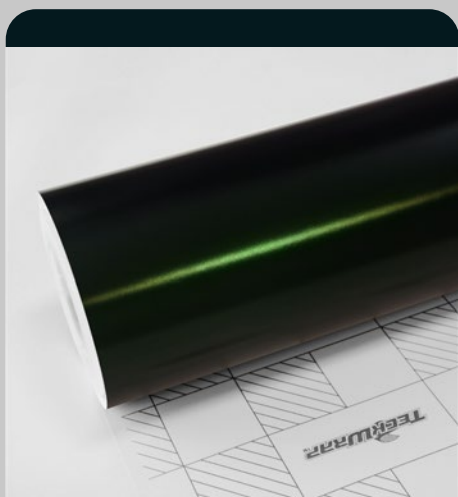
Post heating: 100 Celcius



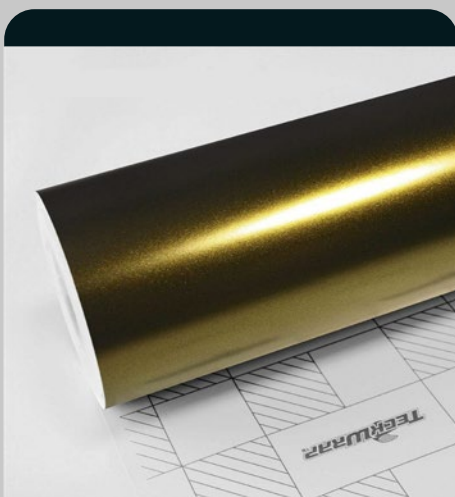
Dark Grey Silk
SKU: HM01



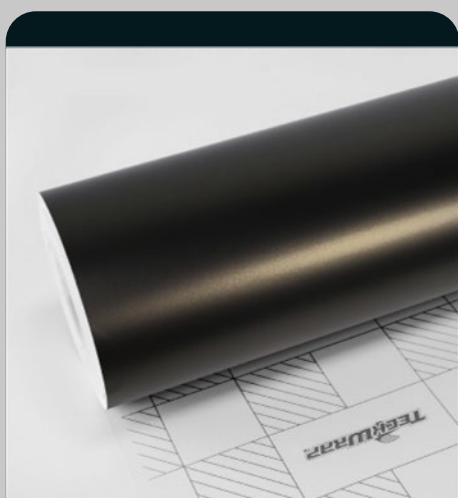
Black Silver
SKU: HM02-R



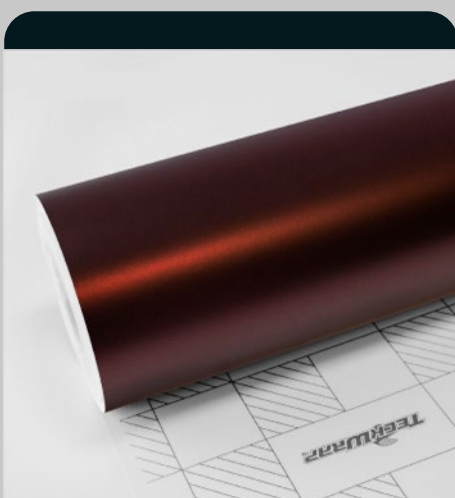
Matte Green Black Silk
SKU: HM07



Greenfinch Gold
SKU: HM09

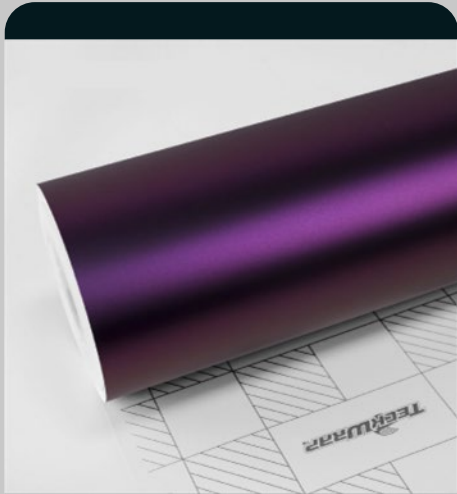


Mineral Grey
SKU: SMT01

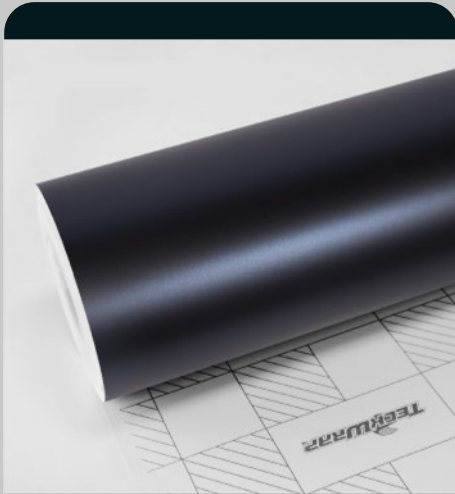


Burnt Maroon
SKU: SMT02

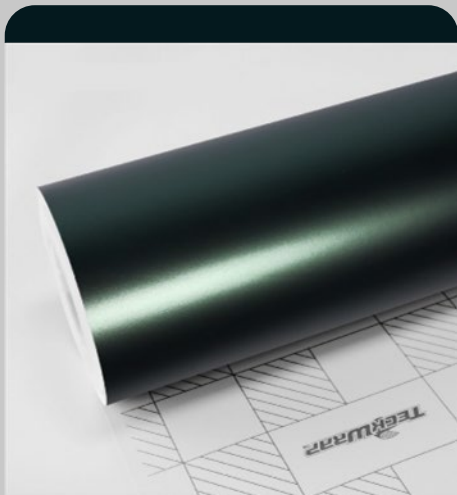
SAFETY ALIC



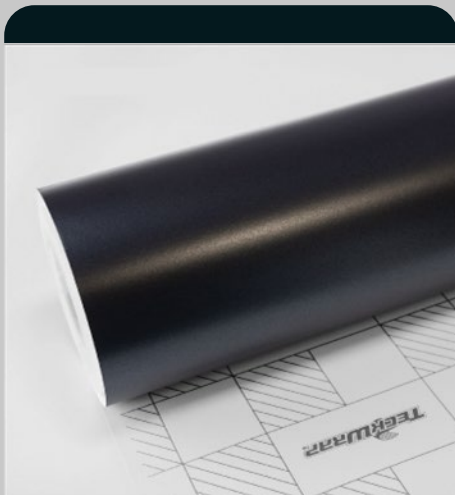
Venetian Violet
SKU: SMT03



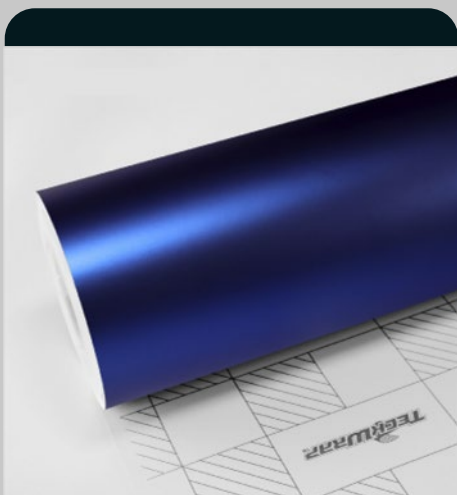
Boysenberry Black
SKU: SMT04



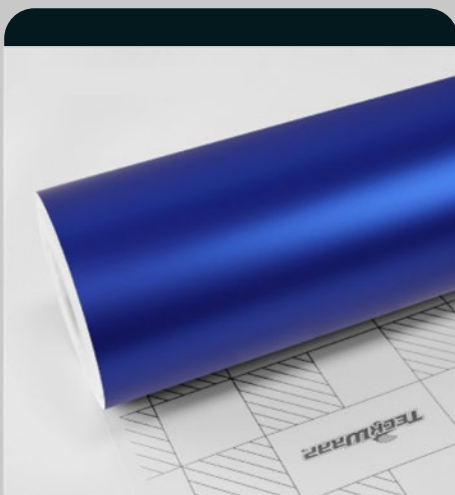
Green Mantle
SKU: SMT05



Apollo Grey
SKU: SMT06

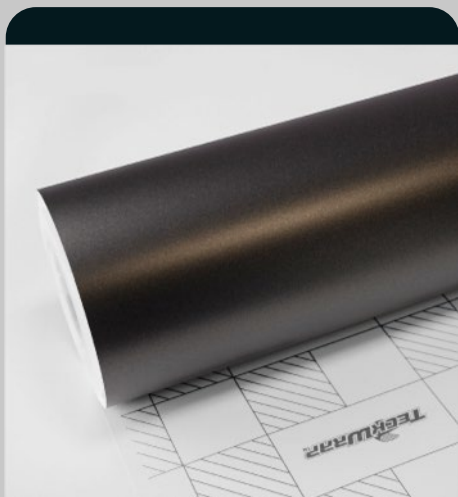


Rasant Blue
SKU: SMT07



Admiral Blue
SKU: SMT08

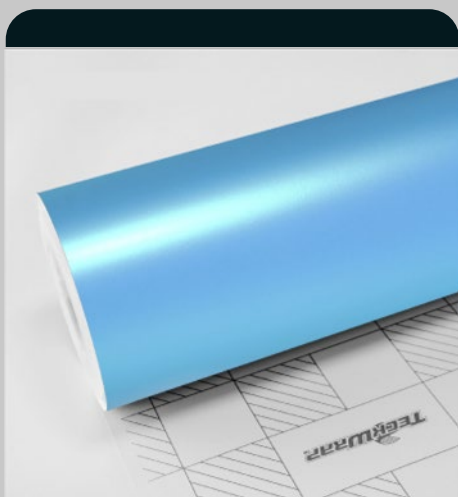
SAFETY ALLIC



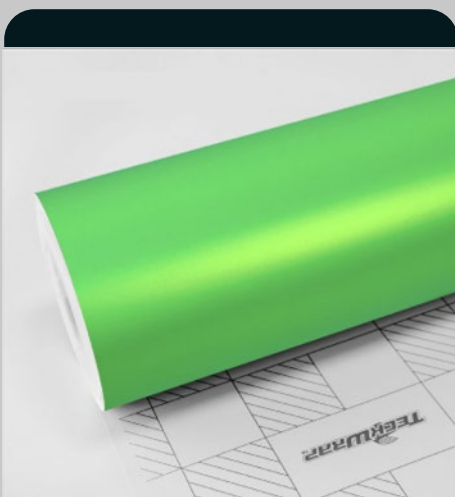
Onyx Grey
SKU: SMT09



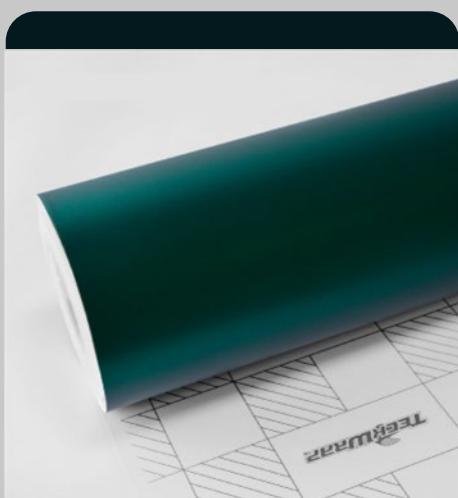
Solar Orange
SKU: SMT10



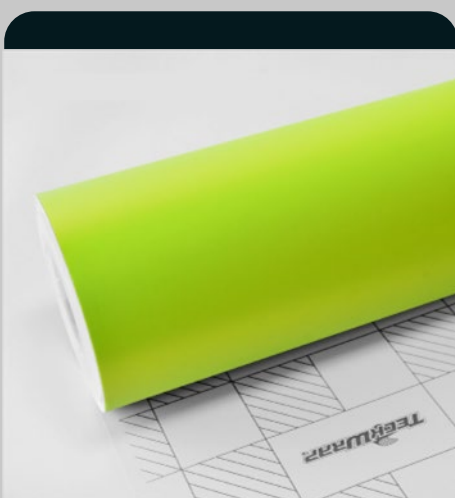
Surf Blue
SKU: SMT11



Paradise Green
SKU: SMT12

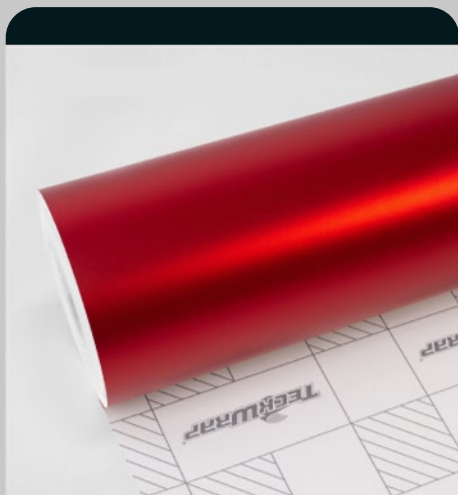


Pine Green
SKU: SMT13

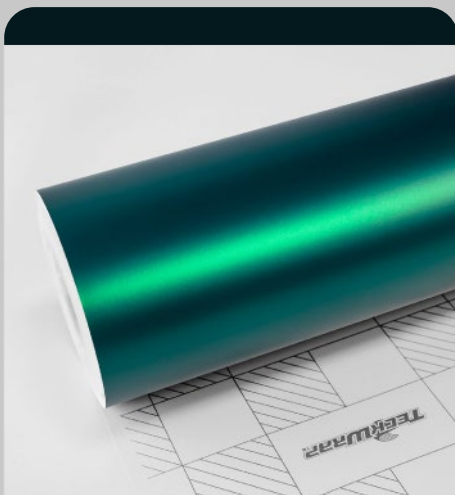


Lawn Green
SKU: SMT14

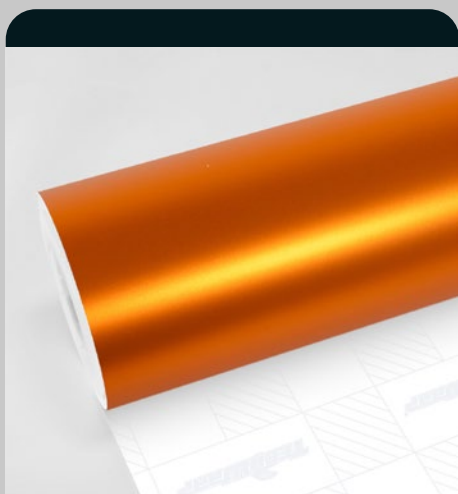
SALE SATURDAY



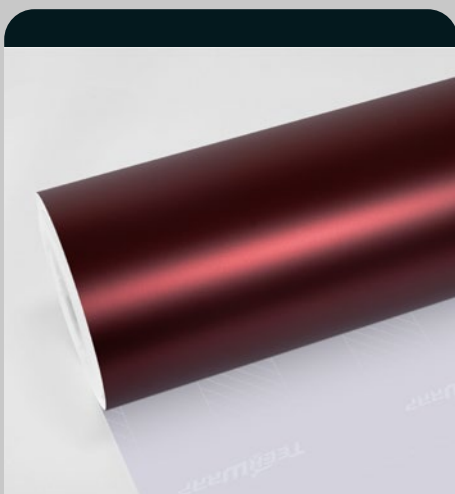
Flame Red
SKU: SMT15



Jewel Green
SKU: SMT16



Copper Orange
SKU: SMT17R



Velour Red
SKU: SMT18R



Silver Blue
SKU: SMT19

SALEZ SATIN



FECKWRAP™

**STRUCTURE
VINYL**

Structure vinyl

With a collection of different styles, TeckWrap offers you this series of camouflage vinyl wraps that give your vehicle a stylish finish with a genuine look. As a proud supplier, TeckWrap has plenty of film selections that have good conformability and durability. The material is stretchable enough to wrap every edge and recessed area easily. Designed for interior and exterior applications.

BASIC SPECIFICATIONS

The thickness of film: 0.14mm

Type of film: High grade polymeric calendared vinyl film with air release channels

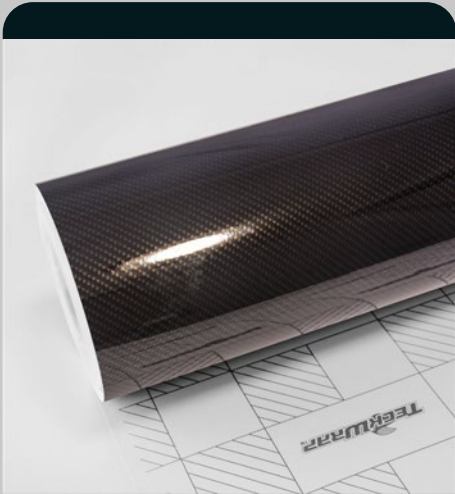
Adhesive: Solvent-based adhesive, transparent, origin: Taiwan

Storing period: 2 years if stored in +10°C to +20°C, relative humidity 50%, in original package, away from direct sunlight, clean and dry place

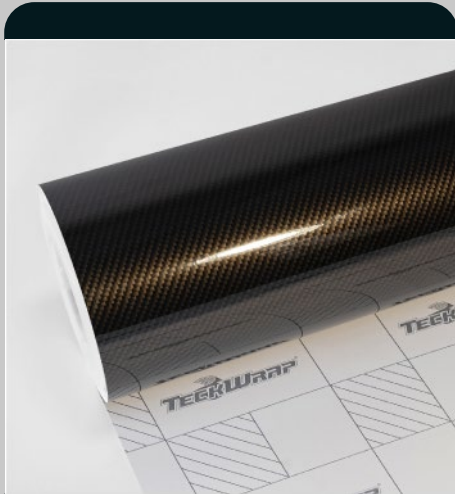
Indoor life: 2 years when followed rules of application and use

Outdoor life: 1 year when followed rules of application and use

Post-heating: 80 Celsius. Cure time 48 hours



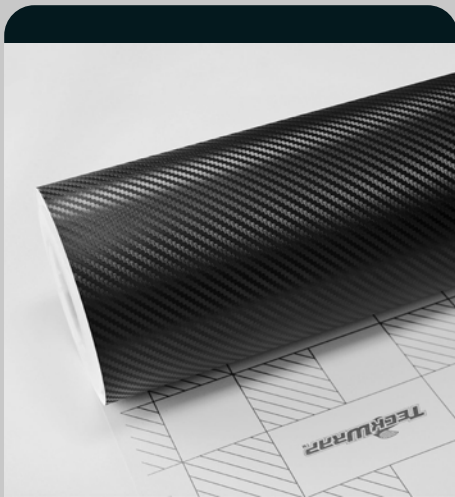
Ceramic Carbon
SKU: RCF03



Premium Black
SKU: RCF03-R



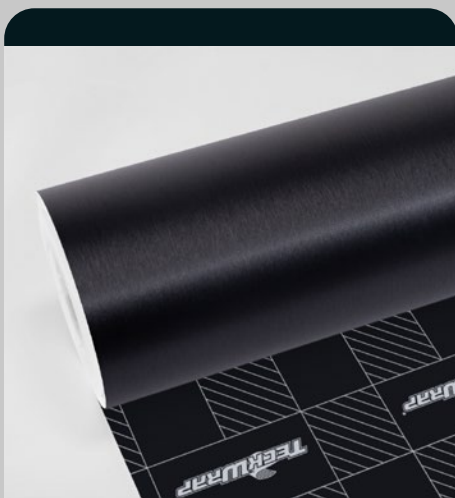
Ghost Dark Forged Carbon
SKU: RCF09



Noir Black Carbon
SKU: CF01



Pitch Black
SKU: CF02



Ink Black
SKU: BM04

STUDY

TECKWRAPTM



CATALOG

**20
25**

PRINTABLE FILMS

Basic Specifications

High-grade polymeric and cast vinyl film for printing (Solvent & Latex)

High-grade polymeric vinyl film

Color: white

Finish: gloss or matte + laminate

Thickness of film: 0.005 ± 0.01 mm / Basic weight: 100 ± 10 g/m²

The thickness of release liner: 0.16 ± 0.01 mm / Basic weight: 140 ± 10 g/m²

Series: 270 series

Adhesive: Henkel solvent-based acrylic adhesive, transparent, ultra-weather-resistant, viscosity 1000~3000cps, thickness 12 µm dry

Temperature range: -5~80°C

Release liner: Felix Schoeller Release Liner / 20-104-20-1,9 printed, double side PE coated Kraft. One side solventless silicone-coated, air release (ISO 9001, ISO 140001, OHSAS 18001)

Package: Roll width 152 or 137 cm, length 39m/ 40m, weight 16-17 kg

High-grade cast vinyl film

Color: white

Finish: gloss or matte + laminate

Thickness of film:

CPF52005: 50 ± 2 µm

CLF52005: 50 ± 2 µm

CLF52005M: 60 ± 2 µm

The thickness of release liner:

CPF52005: 160 ± 5 g/m² (paper)

CLF52005: 50 ± 5 µm (PET)

CLF52005M: 50 ± 5 µm (PET)

Series: 270 series

Adhesive: Henkel solvent-based acrylic adhesive, transparent, ultra-weather-resistant, viscosity 1000~3000cps, thickness 12 µm dry

Temperature range: $\geq +10$ °C

Release liner: Felix Schoeller Release Liner / 20-104-20-1,9 printed, double side PE coated Kraft. One side solventless silicone-coated, air release (ISO 9001, ISO 140001, OHSAS 18001)

Package: Roll width 152 or 137 cm, length 30 m, weight 14-15 kg

CAST

Cast Lamination Glossy
CLF52005

CAST

Cast Lamination Matte
CLF52005M

CAST

Cast Printing Glossy
CPF52005

Glossy Transparent Lamination LF52005-HD

Matte Transparent Lamination LF52005M

Gloss Silver Printing Film PF52008-HD

PRINTABLE



Gloss White Printing Film
PF52005-39



Gloss White Printing Film
PF520055-HD

WE'VE
BUILT
PRINTING

Roll Size: 1.52m*30m (5*98ft, 1.6*33yd)

Please visit www.teckwrap.com for product specifications and installation instructions.

TECKWRAPTM



CATALOG

**20
25**

PAINT PROTECTION FILMS

PAINT PROTECTION FILM

TeckWrap Paint Protection Film (PPF) functions like armor, giving vehicles extra safeguard, protecting them daily from potential damages. Pursuing flexible solutions for all needs, the company offers different types of PPF made in various materials. Explore and choose the best for your application.

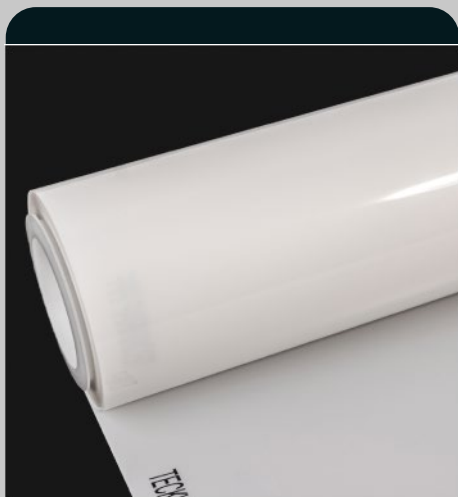


Why Protect the Paint?

Vehicles can encounter potential threats everywhere, being on the run every day. Accidental scratches and scuffs might occur caused by gravel. Or they can happen when/ after one pulls up a vehicle due to human factors. Besides, common contaminants can damage car paint over time, including acid rains, bird droppings, bug acids, and oils.

All factors mentioned can cause abrasion, paint chips, yellowing, and discoloration, disfiguring your vehicle. When re-paint, distinctions lie between original car paint and spray painting due to different qualities and workflows. Spray paint tends to have a shorter lifespan, despite it being pricy.

Once car paint gets damaged, a vehicle's resale value will go down. Nothing is better than guarding beforehand. Various Paint Protection Films available at TeckWrap can offer the safeguard you deserve, helping save the day. Start making a difference by purchasing PPF from TeckWrap today.



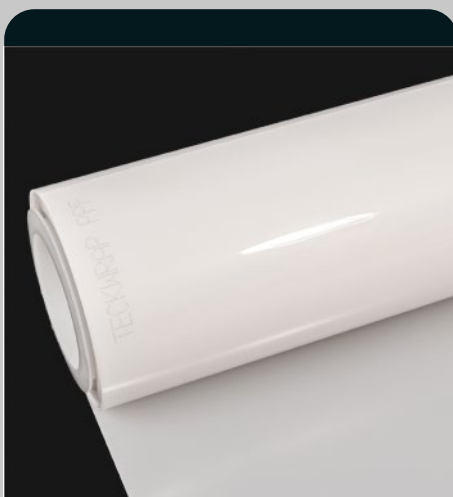
S75+ Elite
ALT: 187±5 µm



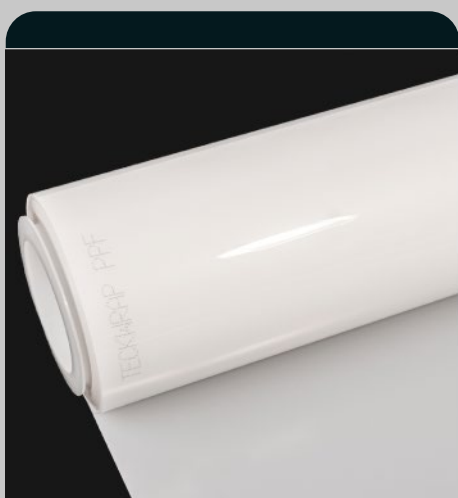
G75 Titan
ALT: 180±10 µm



G85 Premium
ALT: 214 µm



E65 Prime
ALT: 167±10 µm

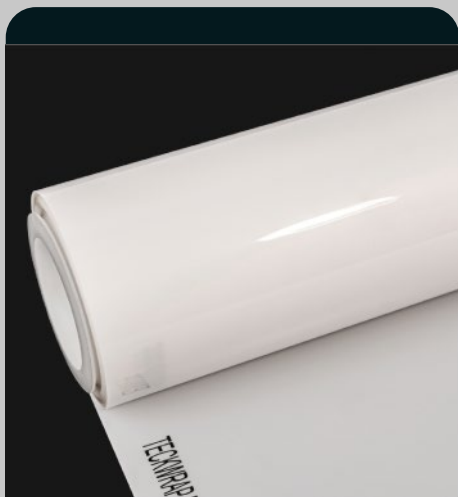


E75 Crystal
ALT: 180±10 µm



E85 Pro
ALT: 212 µm

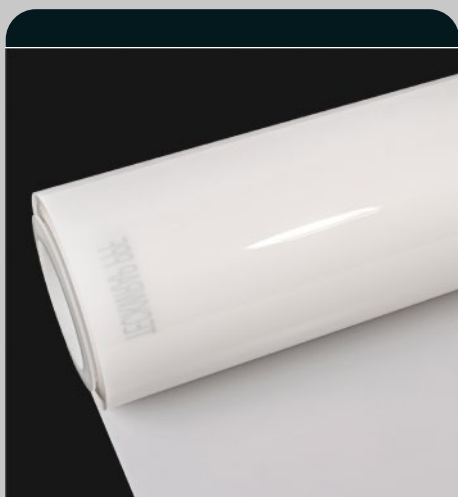
PATENT PROTECTION



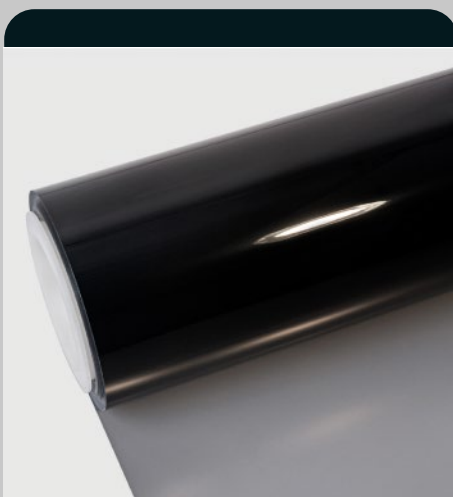
X75 Core
ALT: 183±5 µm



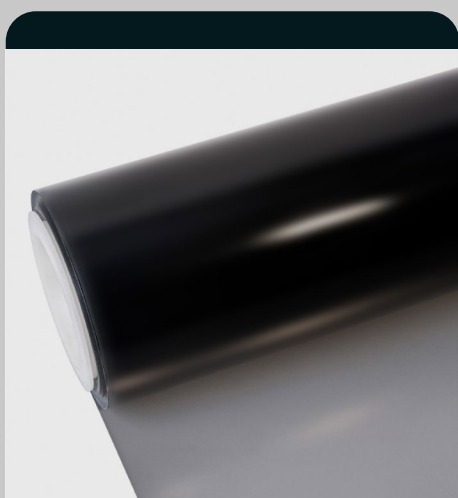
X75M Shade
ALT: 187±10 µm



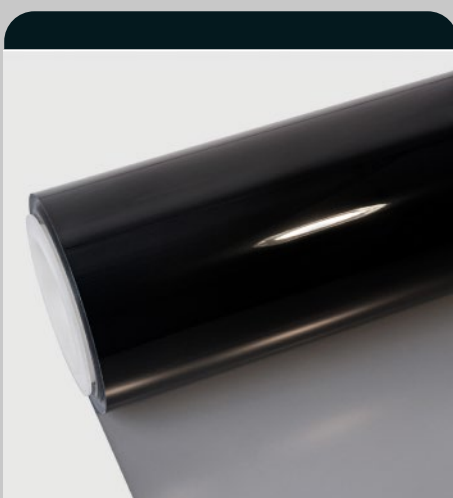
X85 Essential
ALT: 208±5 µm



BLK-X Jet Black
ALT: 180±5 µm



BLKM Onyx Black
ALT: 185±10 µm



BLK Phantom
ALT: 185±10 µm

PAINT PROTECTION

TECKWRAPTM



CATALOG

WINDOW TINT FILMS

**20
25**

CAR WINDOW TINT FILM



Why should you apply window film?

Window film has been getting more popular throughout the years, and this is because it is beneficial in many ways.

Comfortable environment

First, a window film can effectively prevent most solar energy and decrease the hot temperature coming from the sun, giving you a comfortable experience during your ride.

Saving energy

Because a window film can decrease the heat, you do not have to use that much air conditioning in the Summer. On the other hand, it helps you conserve heat during the Winter. Thus, it will save a significant amount of energy.

UV resistance

A window film can reduce UV rays by over 90%, protecting you from potential harm due to the damaging rays. So you can enjoy your journey with no stress, even without applying sun cream.

Lower risk of breaking windows

A window film gives your window extra protection with a layer. When a window is broken, it can lower the risk of the glass being shattering and spraying to minimize the chance of hurting passengers.

What does TeckWrap window film offer

TeckWrap window film has the following features, which all aim to offer you a better experience:

Heat rejection

Our window film is designed to improve comfortability and reduce energy consumption, which can block 35-65% of solar heat. You can easily balance the inner climate.

Interruption-free

TeckWrap window film provides you with perfect clarity. See everything clearly without getting blinded by the sunlight, and enjoy a safe ride.

Slow fading

When rejecting harsh sunlight, the window film can effectively slow the fading of your interiors, keeping them like new.

UV Resistance

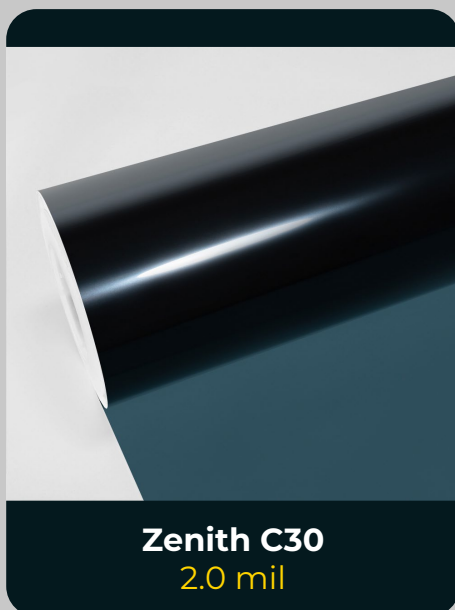
TeckWrap window film can protect you from 99% cancer-causing UV rays and ensure a healthy journey.

Weather-proof

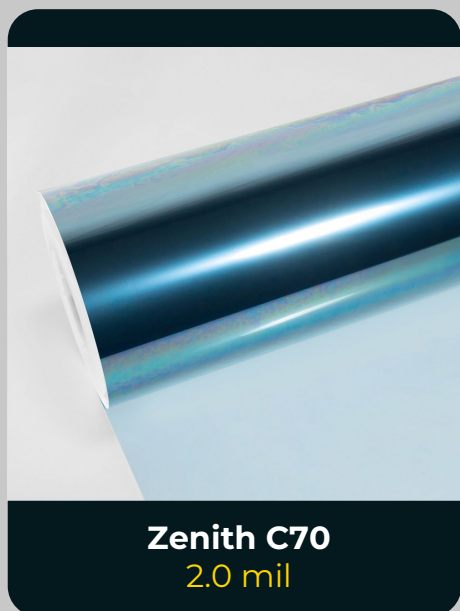
Our window film is made of top-quality material with long durability, guarding you along the way as long as you need.



Zenith C15
2.0 mil



Zenith C30
2.0 mil



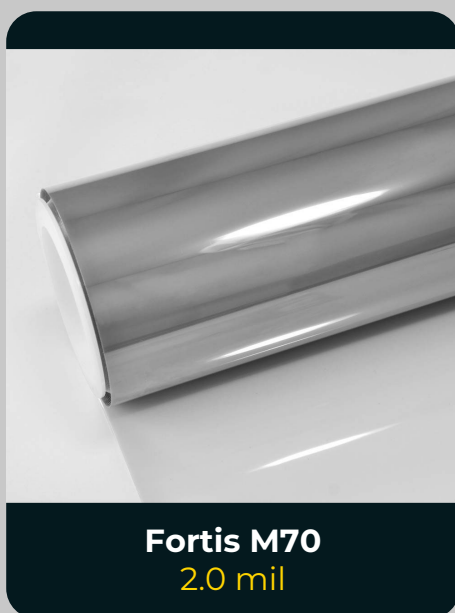
Zenith C70
2.0 mil



Fortis M20
2.0 mil

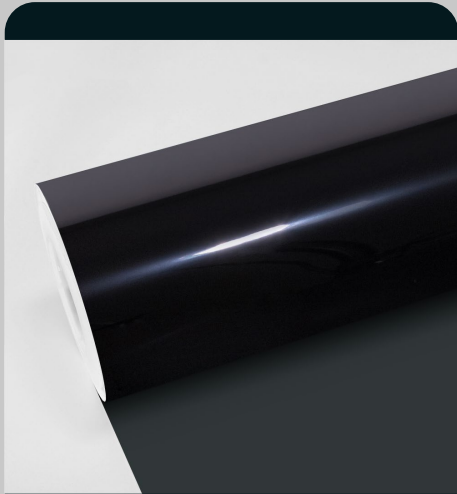


Fortis M30
2.0 mil



Fortis M70
2.0 mil

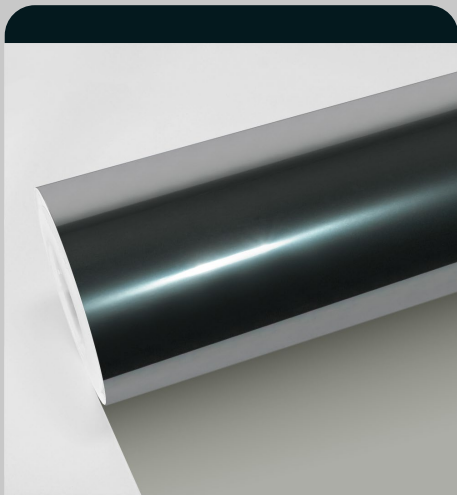
WINDOORFILM



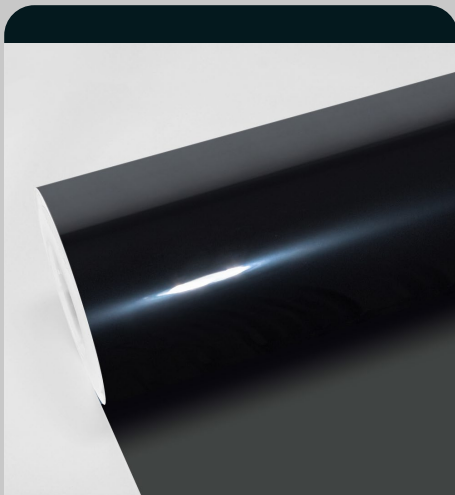
Aegis W15
3.5 mil



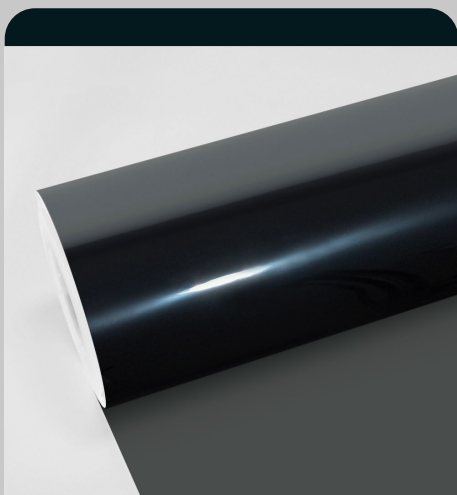
Aegis W30
3.5 mil



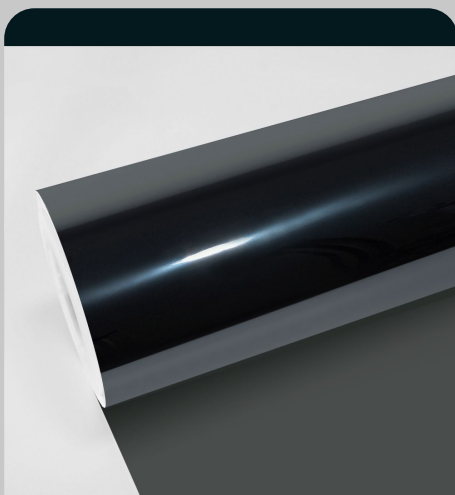
Aegis W70S
4.0 mil



Vita SC15
3.0 mil

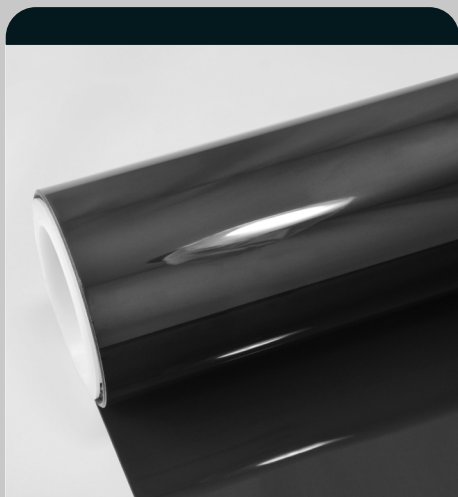


Vita SC30
3.0 mil

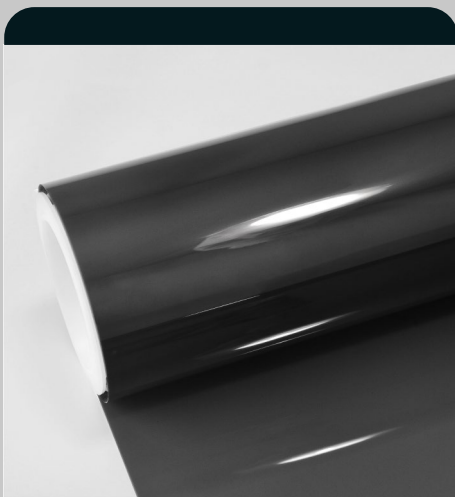


Vita SC70
3.0 mil

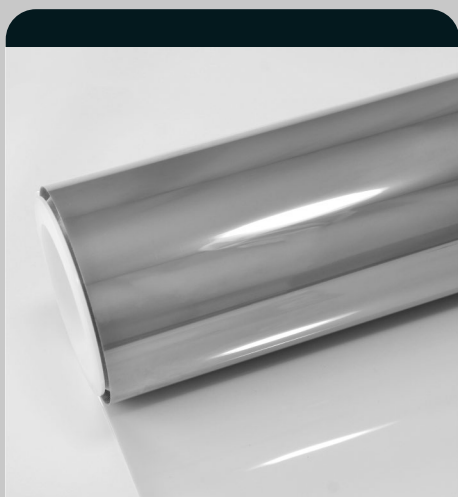
WINDOW FILM



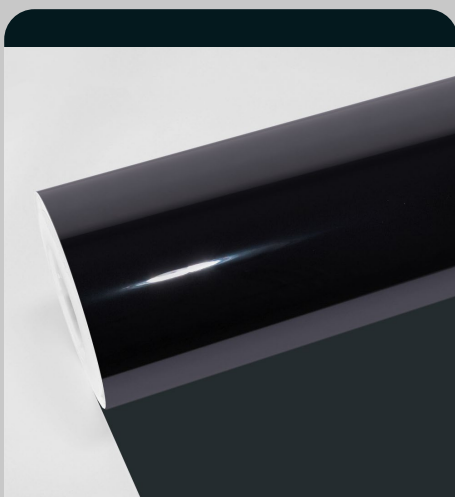
Ionix I15
2.0 mil



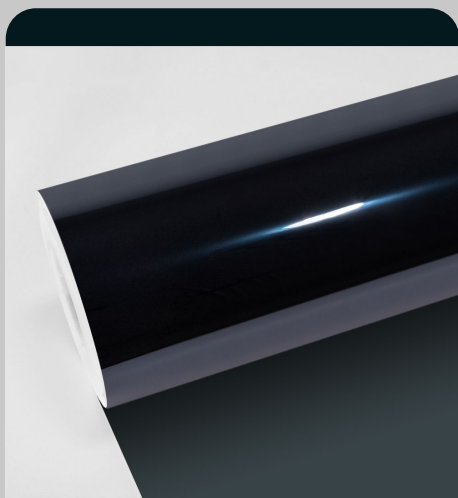
Ionix I20
2.0 mil



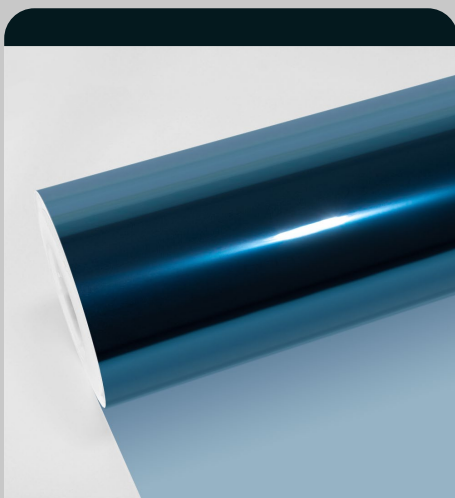
Ionix I70
2.0 mil



Helios C15
4.0 mil

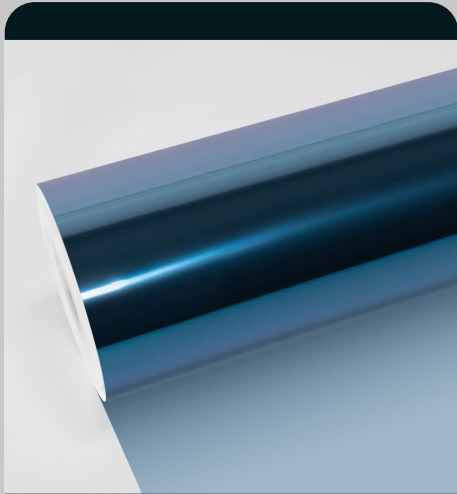


Helios C30
4.0 mil

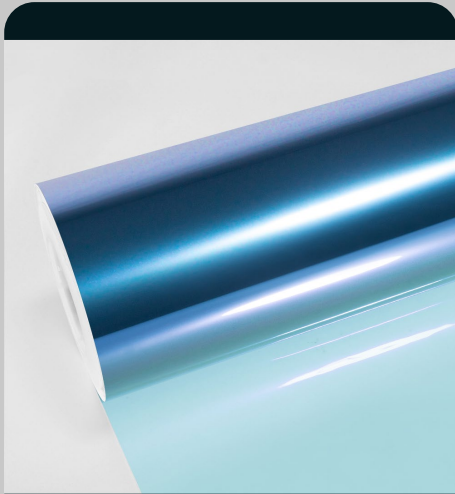


Helios C70
4.0 mil

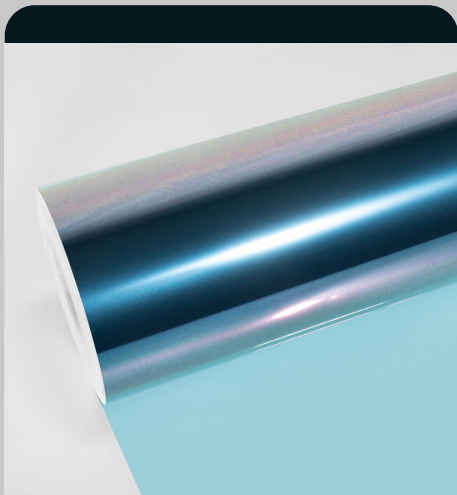
WINDOORFILM



Helios C75Pro
2.5 mil



Nebula K70S
2.5 mil (Cosmic Purple)



Nebula K03 2.5 mil
2.5 mil (Sunet Pink)

WINDO FILM