

**TSSCO**

**T**raingle **S**pecialized **S**ystems **C**ompany.

VISION رؤية  
**2030**  
المملكة العربية السعودية  
KINGDOM OF SAUDI ARABIA



## Projects Portfolio

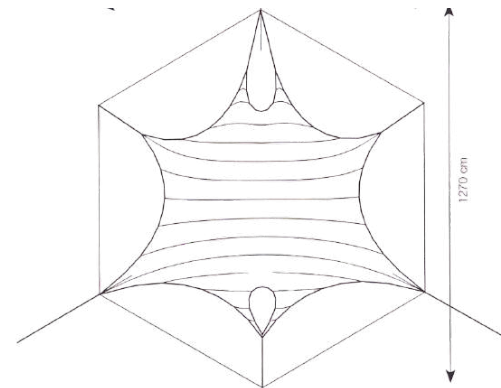
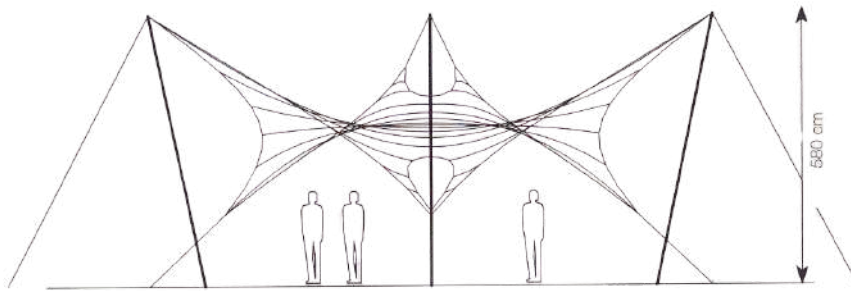
**Trangle Specialezd Systems For Industry Co.**  
P.O. Box 22231, Jeddah 3842  
Kingdom of Saudi Arabia  
Office : 00966 503 365 527  
Website: [www.tsscoksa.com](http://www.tsscoksa.com)  
Email: [info@tsscoksa.com](mailto:info@tsscoksa.com)

# Originality

Tensile structures create eye-catching sculptural membranes of fabric and steel to achieve open, yet protective environments.

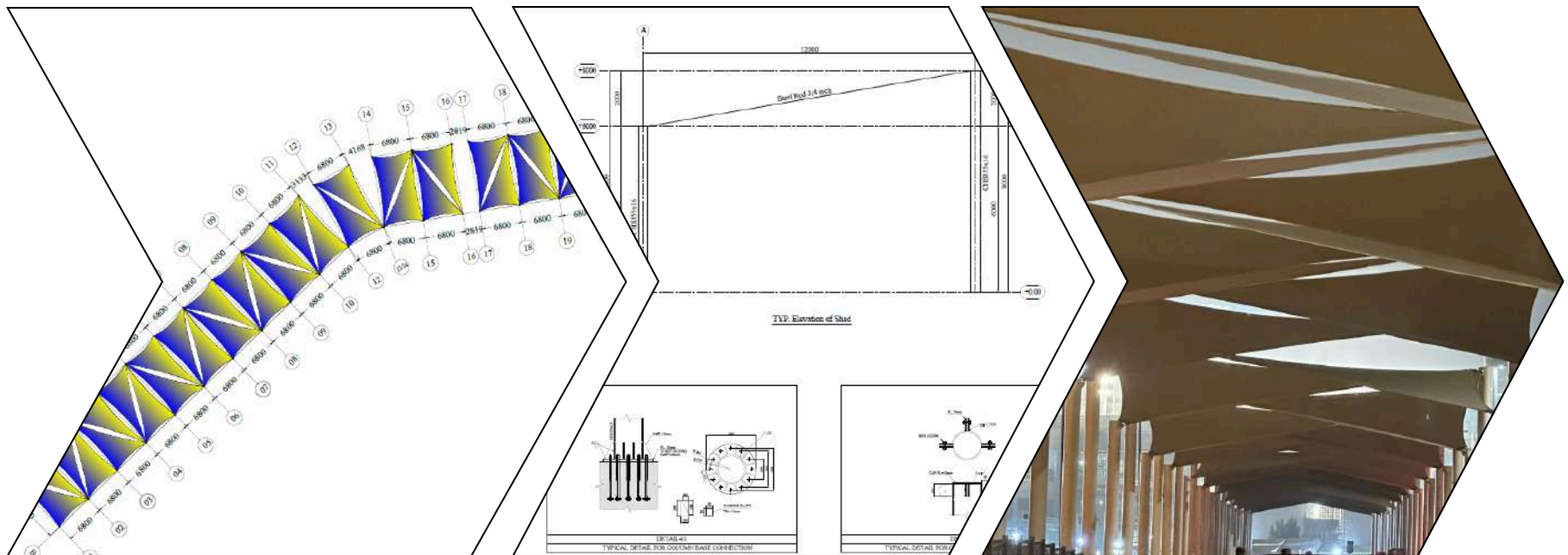
Tensile structures are lightweight and flexible; a versatile design medium that allows incredible free span roofs with interior spaces connected to the outside by their light and openness.

Translucent by day and luminescent at night, tensile architecture provides sustainable, cost-effective, and artistic design solutions that interact with the environment.



# Dependability

We deliver solutions you can count on. From concept to installation, our tensile structures are built with precision, using high-quality materials and proven techniques. Every project reflects our commitment to safety, durability, and long-term performance—ensuring peace of mind for our clients.



The Tensile Structures Division at TSSCO delivers engineered shade solutions for architects, contractors, and clients seeking both function and beauty across outdoor environments.



01

### **Engineered for Saudi Projects**

Tensile Fabric Structures for KSA applications walkways, entrances, schools, parks, and courtyards designed to meet harsh climate conditions with durable, long-term performance.



03

### **Reliable, Lightweight Protection**

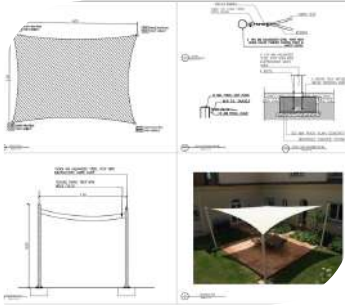
Our architectural membrane structures are engineered for wind, rain, and UV durability lasting up to 20 years with lightweight yet strong frames tailored to your site needs.



02

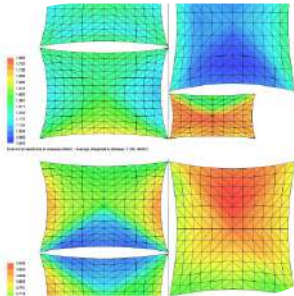
### **Sculptural and Functional**

TSSCO's membrane designs offer architectural flexibility sweeping curves, elegant forms, stainless steel rigging, and precision-built steel frames to create a landmark impression.



## DESIGN

At TSSCO, we approach every project with creativity and precision. Our design team develops innovative and visually striking solutions for shade structures and steel works tailored to client needs. Whether it's car park shades, fabric facades, or custom tensile designs, our design process ensures every project starts strong –with purpose and style.



## ENGINEERING

Our engineering team combines deep technical knowledge with architectural sensitivity to develop structurally sound and code-compliant solutions. We integrate cutting-edge tools and best practices to ensure safety, efficiency, and long-term performance, making each structure a blend of form and function.



## MANUFACTURE

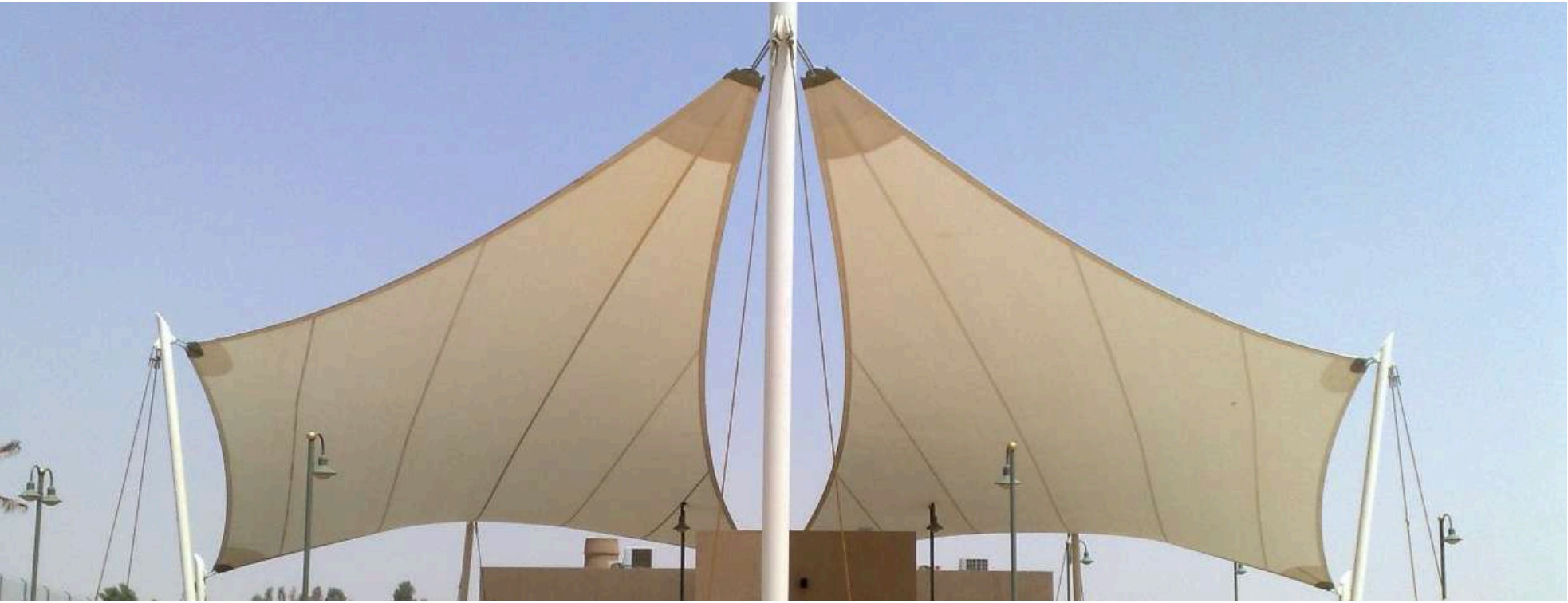
We take pride in our in-house manufacturing capabilities. Our skilled fabricators work with premium materials to deliver custom steel and fabric components that meet rigorous industry standards. Every element is produced with attention to detail, ensuring durability and excellent finish.



## INSTALLATION

Our experienced installation teams are at the heart of delivering each project successfully. With expertise in site coordination, safety protocols, and complex lifting operations, TSSCO ensures smooth, efficient installations. Whether it's a public facility or a private project, we complete every job with precision and professionalism.

# TENSILE STRUCTURES



## Tensile Structures Excellence

Our tensile structures combine artistic design with structural engineering, creating lightweight yet durable solutions that withstand extreme weather conditions.

- Weather-resistant and UV-protective coatings
- Architectural integration with existing structures
- Custom membrane fabrication using premium materials
- Advanced cable and steel framework systems

# TENSILE STRUCTURES

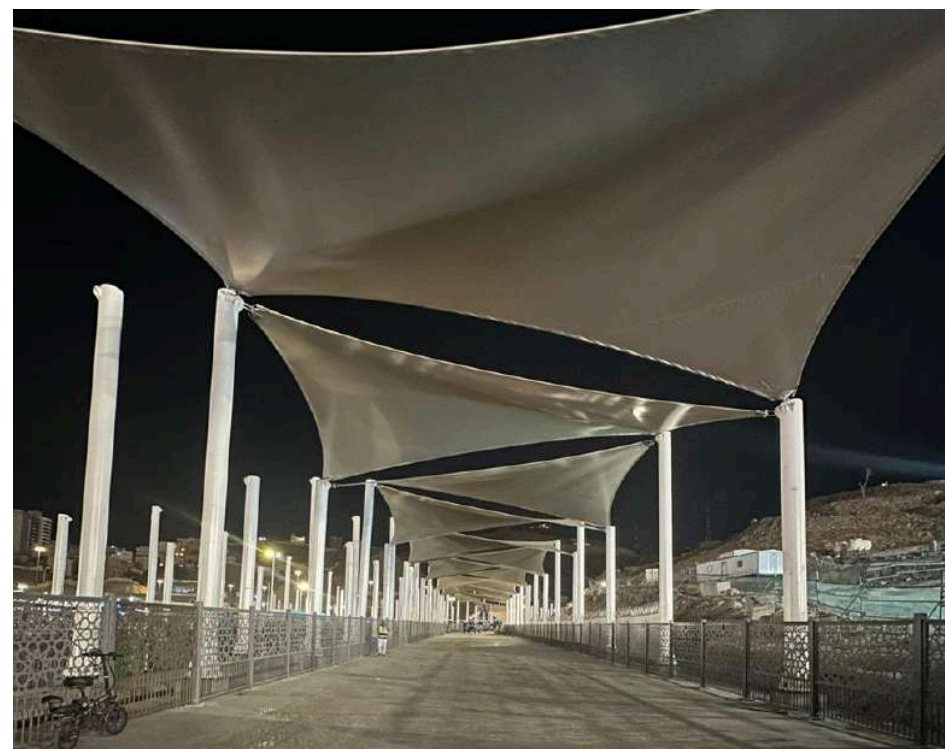
## MAKKAH PILGRIM BUS STATIONS SHADE PROJECT



Location: Makkah, KSA

Coverage: 30,000+ sqm

Shading for seven major bus stations, designed for year-round and peak pilgrimage use. Features UV-resistant tensile fabric, durable steel frames, accessible layouts.



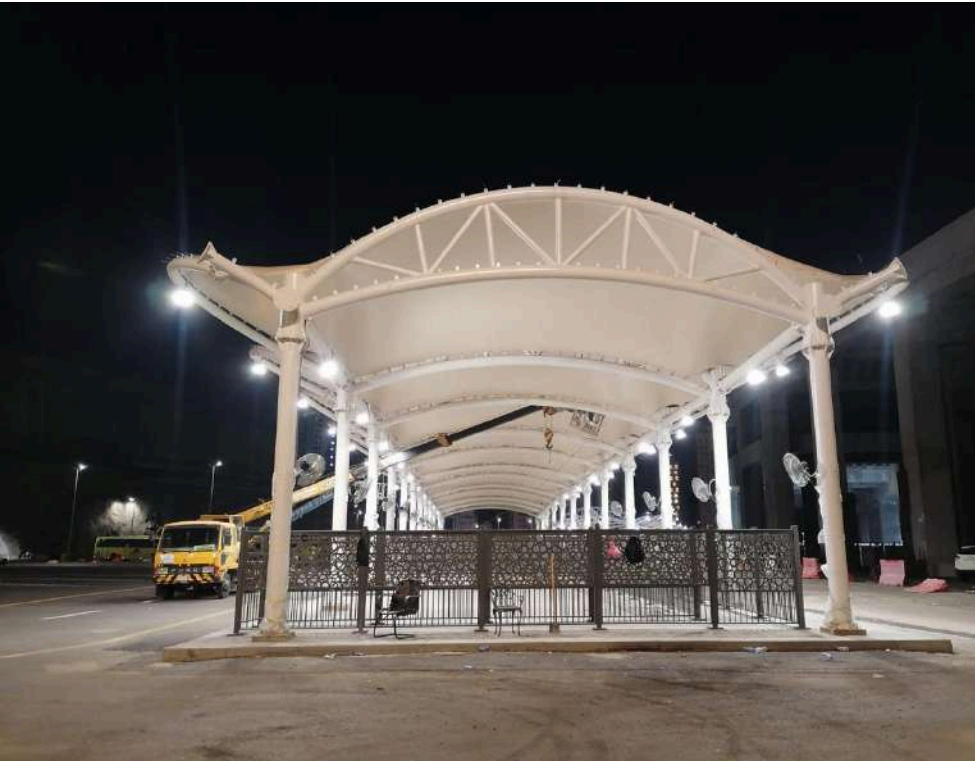
# TENSILE STRUCTURES

## BAB ALMLIK STATION



# TENSILE STRUCTURES

## JABAL OMAR STATION



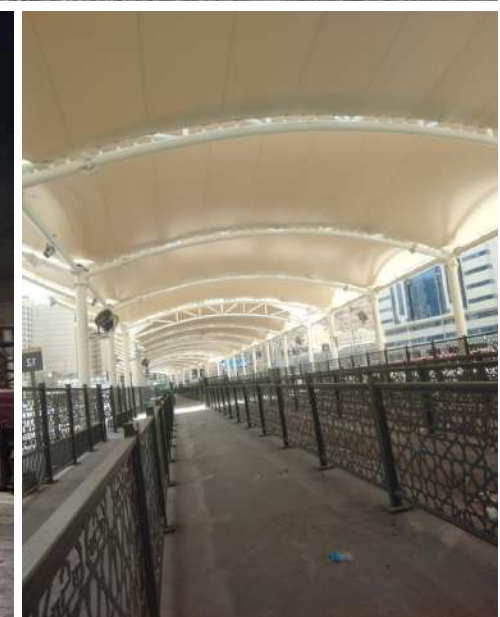
# TENSILE STRUCTURES

## JARUAL STATION



# TENSILE STRUCTURES

## AL JAMARAT STATION



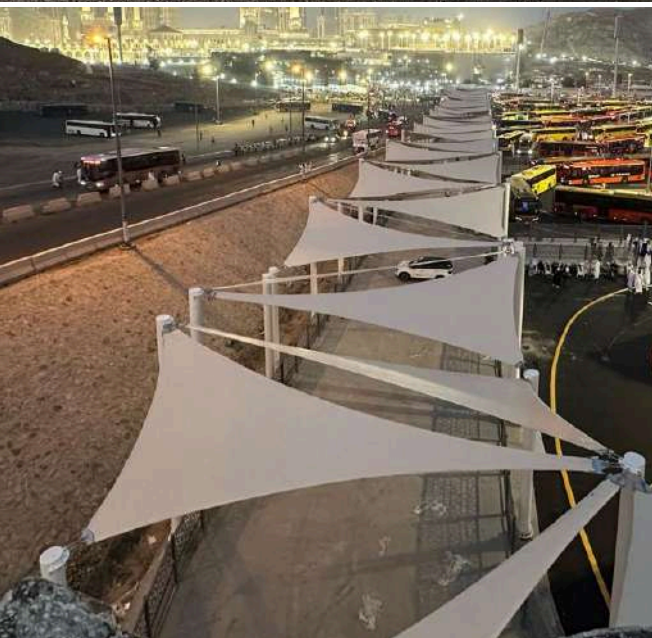
# TENSILE STRUCTURES

## SHAAB AMER STATION



# TENSILE STRUCTURES

## SHAAB AMER STATION



# TENSILE STRUCTURES

**Project: Public Square Shades in the City of Sabya**

Location: Jazan, Sabya, KSA.

Size: 4981 Sq.m



# TENSILE STRUCTURES

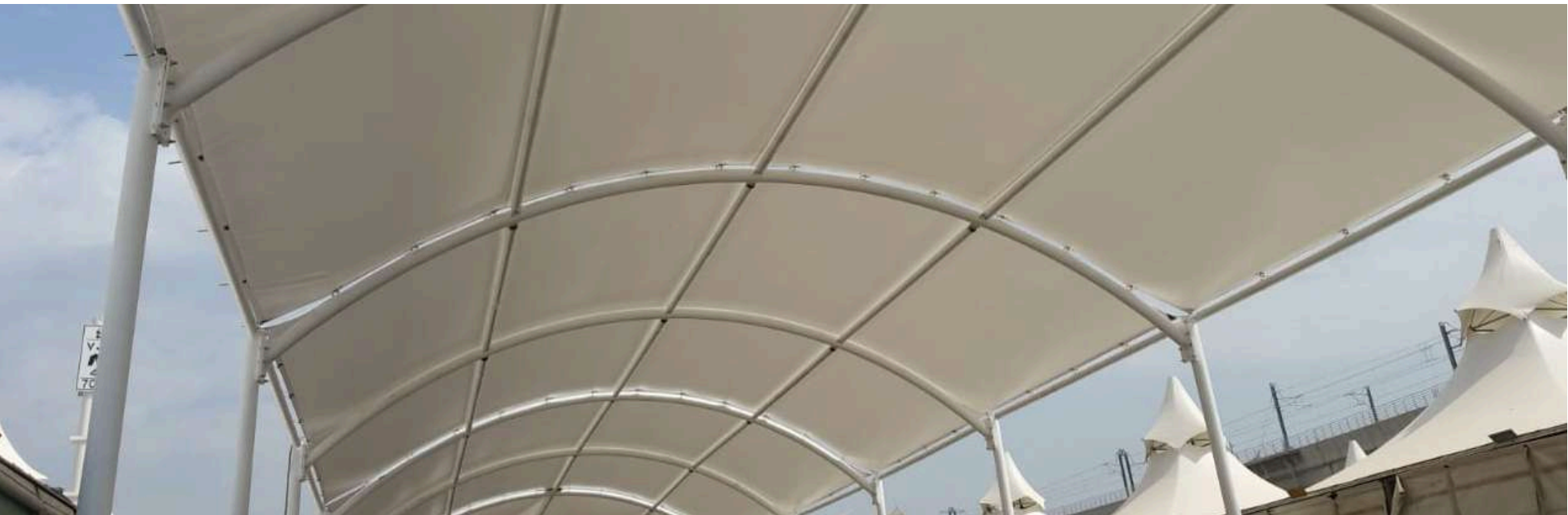


# TENSILE STRUCTURES

## Project: Walkway shades

Location: Mina, Makkah, KSA

Size: 1600 Sq.m



# TENSILE STRUCTURES



# TENSILE STRUCTURES

## Project: Gate Datet Market

Location: Bisha, KSA

Size: 1250 Sq.m



# CAR PARKING SHADES

**Project: Check point shade**

Location: JEDDAH, KSA

Size: 864 Sq.m



# TENSILE STRUCTURES



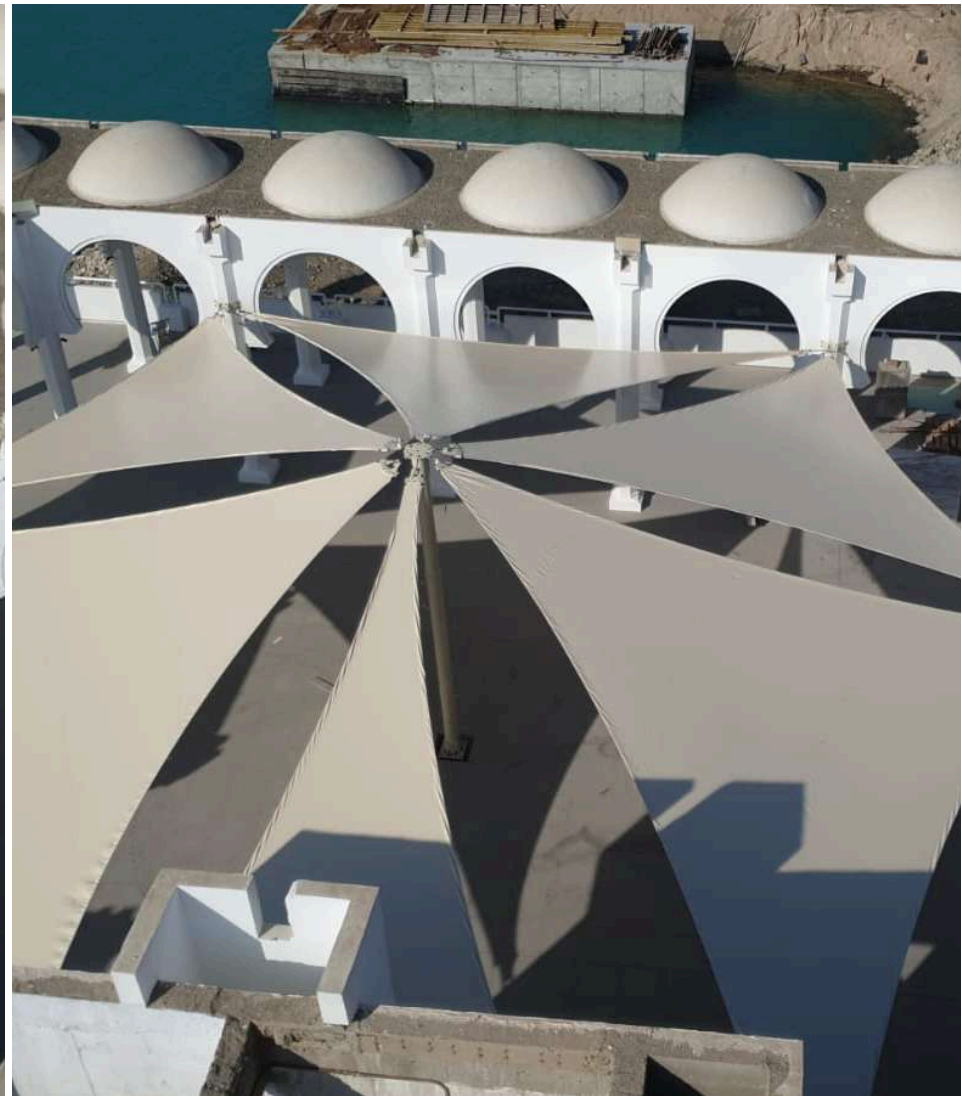
## Project: Bin Ladin's Mosque

Location: Makkah, KSA

Size: 1500Sq.m

# TENSILE STRUCTURES

---



**Project: ALRahma Mosque**

Location: Jeddah, KSA

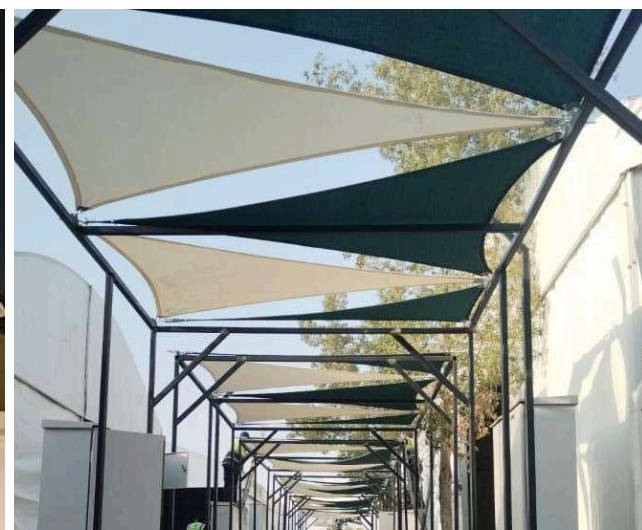
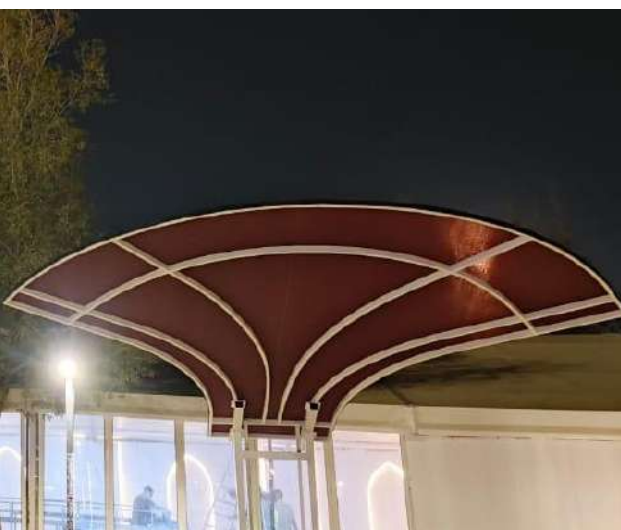
Size: 1124 Sq.m

# TENSILE STRUCTURES

**Project: Corridors. Camps. Pilgrims. In Arafat**

Location: mecca, KSA

Size: 6700Sq.m



# TENSILE STRUCTURES

---

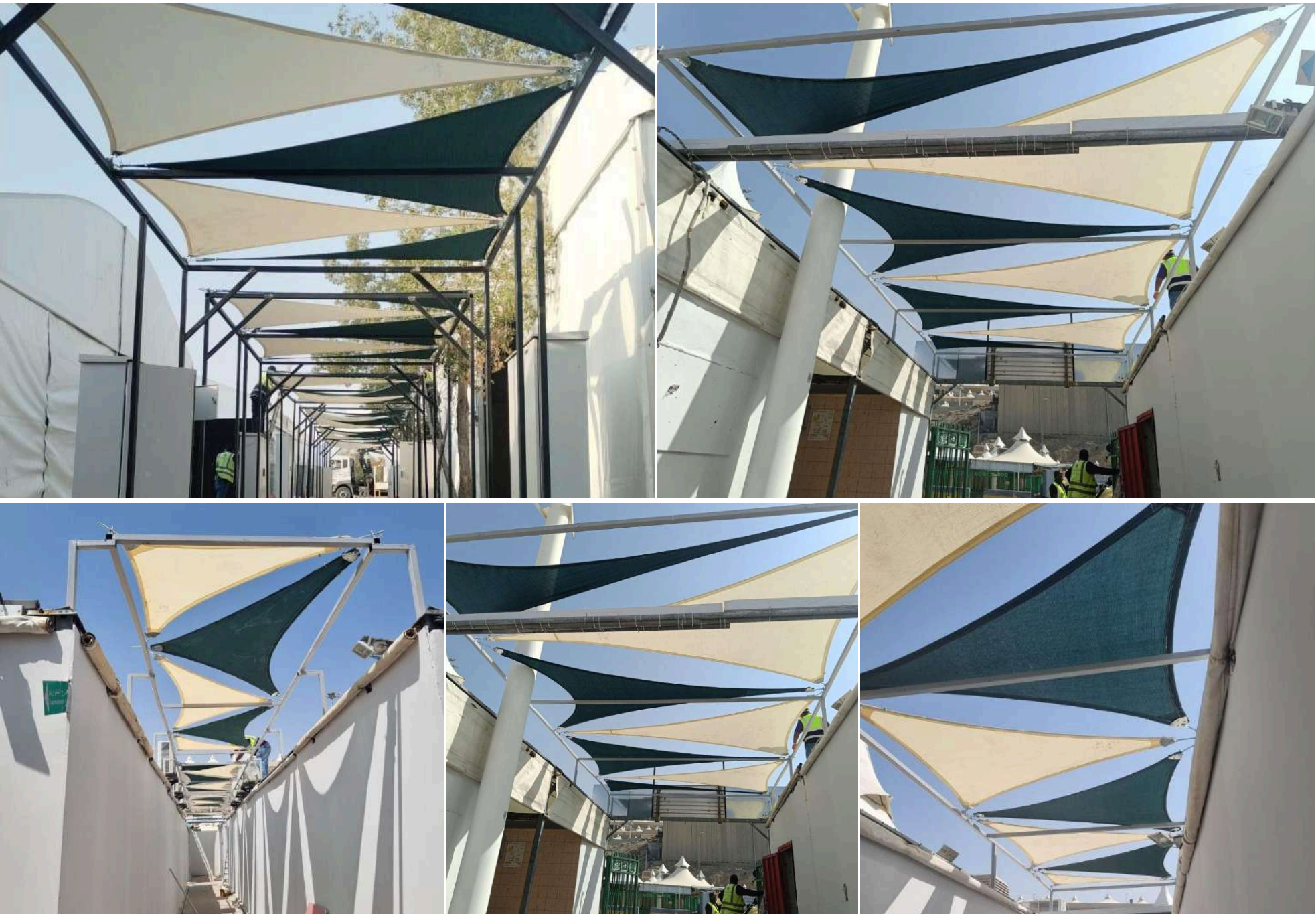


# TENSILE STRUCTURES

---



# TENSILE STRUCTURES



# TENSILE STRUCTURES

---

## Project: Jeddah's towers

Location: Jeddah

Size: 9750 Sq.m



# TENSILE STRUCTURES



# TENSILE STRUCTURES

---

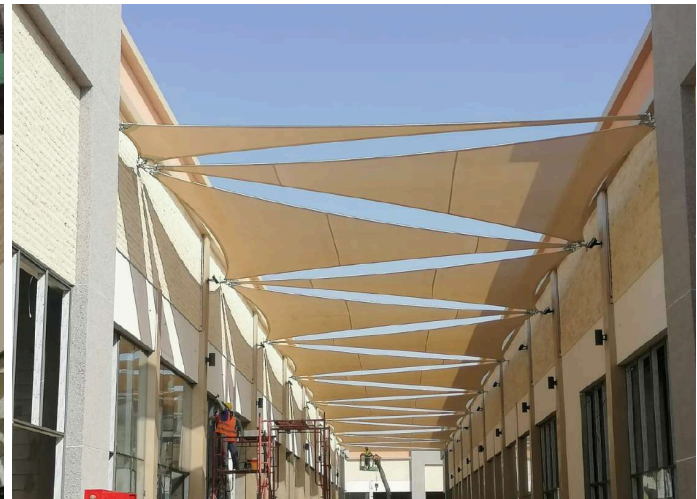


# TENSILE STRUCTURES

## Project: Market 7 Mall

Location: Jeddah, KSA

Size: 2800 Sq.m



# TENSILE STRUCTURES

---



**Project: AL-Fatat priate School Limited**

Location: Mecca

Size: 1125 Sq.m

# TENSILE STRUCTURES

## Project: Arafat Government Center

Location: Mecca

Size: 600Sq.m



# TENSILE STRUCTURES

**Project: Date's maret's shades**

Location: Bishs ,KSA

Size: 8640 Sq.m

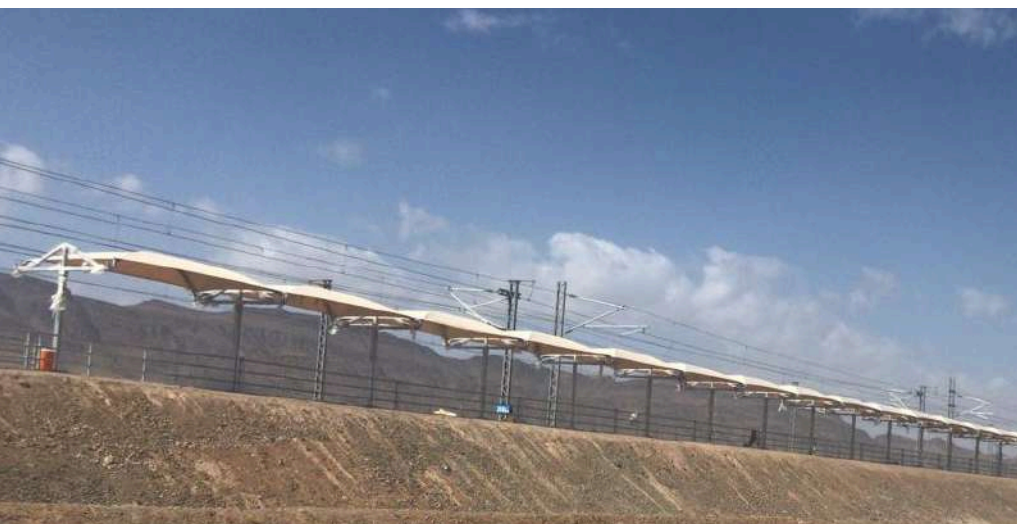


# TENSILE STRUCTURES

**Project: Haramain High-Speed Train Emergency Stop Shades**

Location: Madinah, KSA.

Size: 1,763 Sq.m.

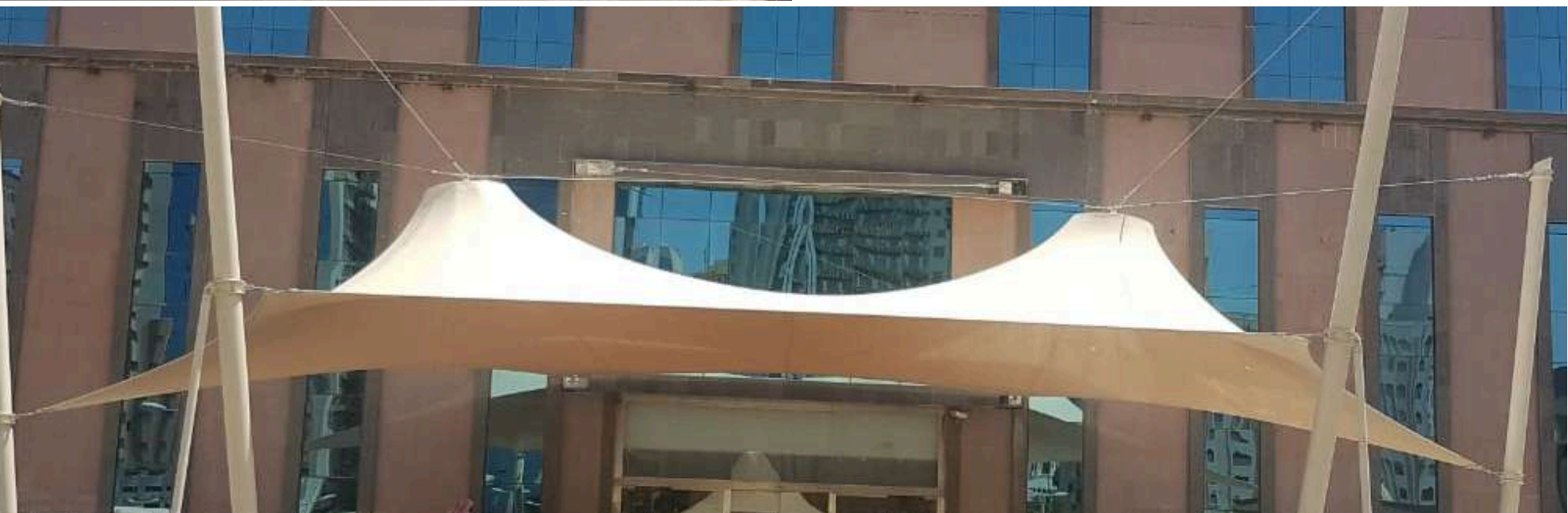


# TENSILE STRUCTURES

**Project: king abduallah specialist hospital**

Location: Mecca

Size: 144 Sq.m



# TENSILE STRUCTURES

**Project: Bani kabir**

Location: Albaha

Size: 1250 Sq.m



# TENSILE STRUCTURES

**Project: MINA**

Location: Mecca, KSA

Size: 2700 Sq.m



# TENSILE STRUCTURES

---

**Project: Private villa**

Location: Jeddah, KSA

Size: 1763 Sq.m



# CAR PARKING SHADES

---



## Car Parking Shade Solutions

Protect vehicles from harsh sun, rain, and hail with our engineered parking shade systems designed for maximum durability and aesthetic appeal.

- Integrated drainage and lighting systems
- Single and multi-bay configurations
- Cantilever and post-supported designs
- Premium HDPE and PVC membrane options

# CAR PARKING SHADES

---

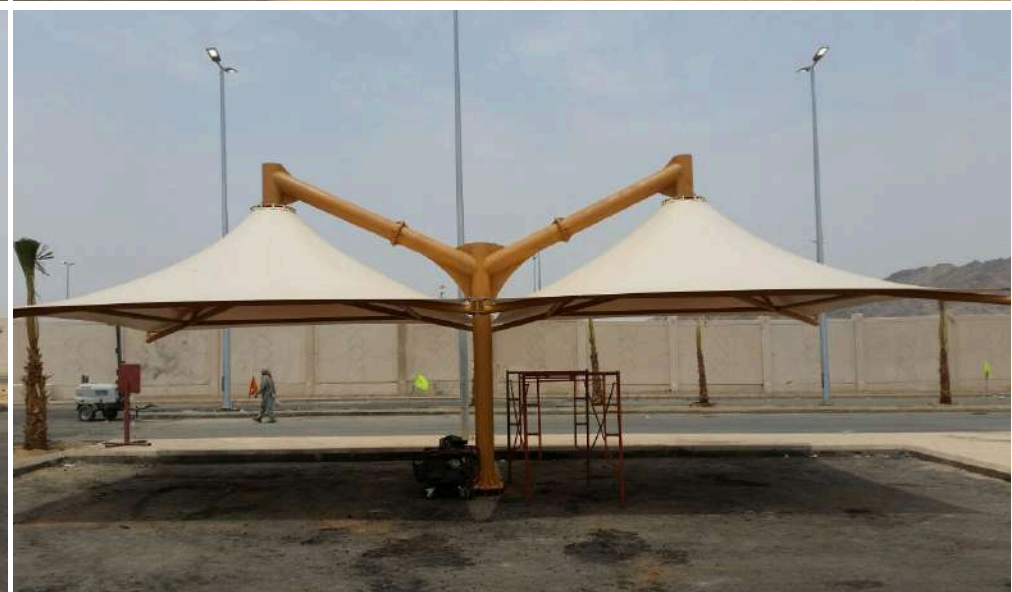
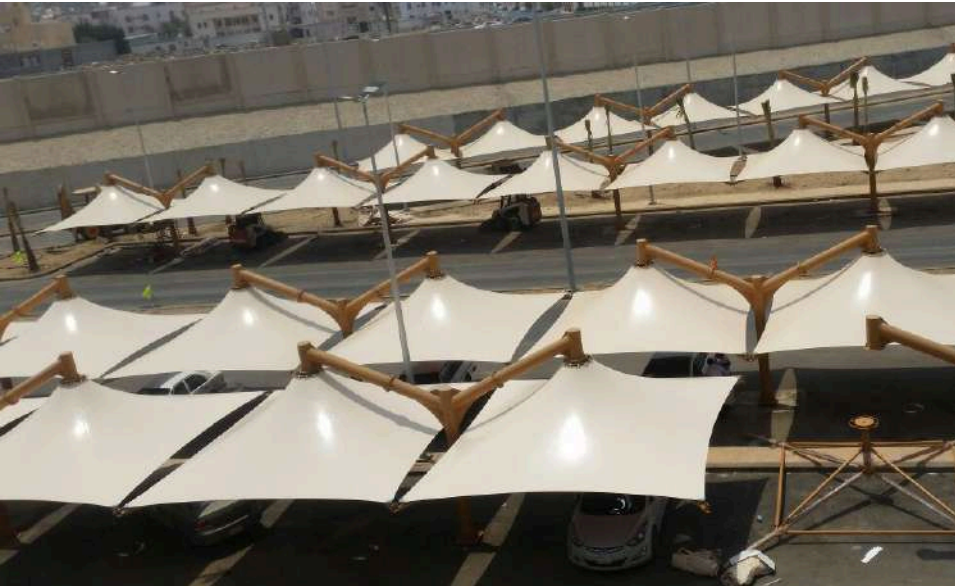
**Project: Red Sea Global**

Location: Umluj, KSA

Size: 5685 Sq.m



# CAR PARKING SHADES



**Project: Public Security Complex**

Location: Makkah, KSA

Size: 10000 Sq.m

# CAR PARKING SHADES

---

## Project: Aramco Car Parking shades

Location: Aramco, Yanbu, KSA

Size: 6000 Sq.m



# CAR PARKING SHADES

## Project: AL-TAYEB MOSQUE

Location: Almadinah Almunawwarah, KSA

Size: 2200 Sq.m



# CAR PARKING SHADES

---

**Project: Petro Rabigh office**

Location: Rabigh, KSA

Srea: 1600 Sq.m



# CAR PARKING SHADES

**Project: Jazan library parking lots**

Location: Jazan, KSA

Size: 1600 Sq.m



# CAR PARKING SHADES

---

**Project: Yanbu general hospital**

Location: Yanbu, KSA

Size: 3060 Sq.m



# PUBLIC & INSTITUTIONAL PROJECTS

---



## Quality and Elegance in Every Shade

Our unique and high-quality shades are perfect for schools, sports fields, and public parks.

- School Shades: Create comfortable learning environments for students.
- Sports Fields: Enhance the experience for players and spectators by providing relief from the sun.
- Public Parks: Add beauty and practicality, allowing families to enjoy outdoor spaces comfortably.

# PUBLIC & INSTITUTIONAL PROJECTS

---

## Project: Qurtubah School

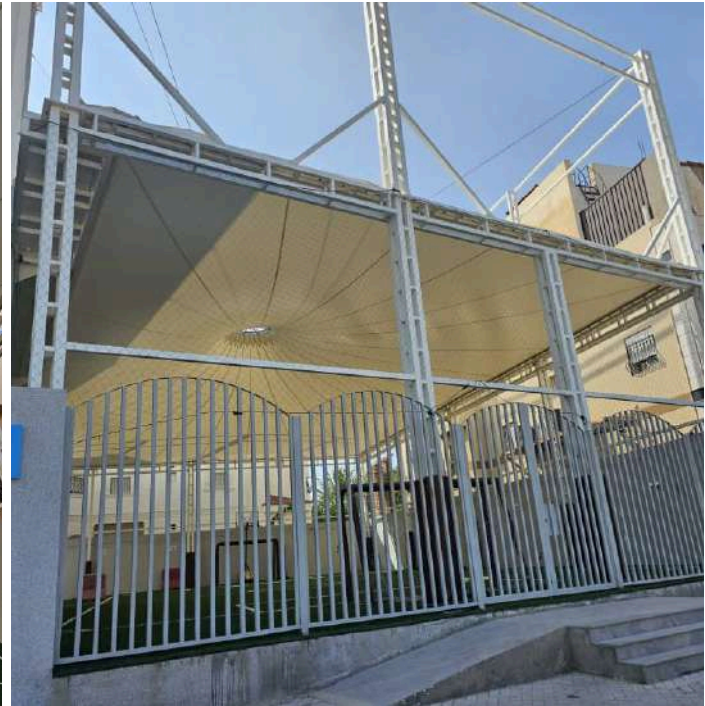
Location: Jeddah, KSA

Size: 1400 Sq.m



# PUBLIC & INSTITUTIONAL PROJECTS

---



# PUBLIC & INSTITUTIONAL PROJECTS

---



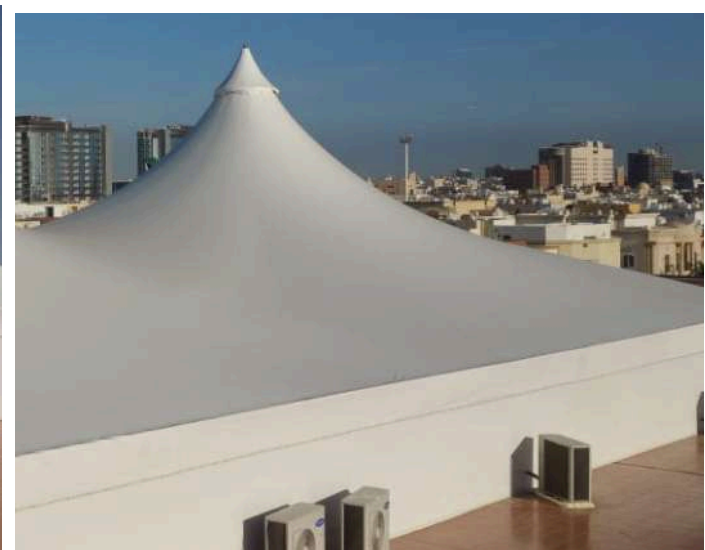
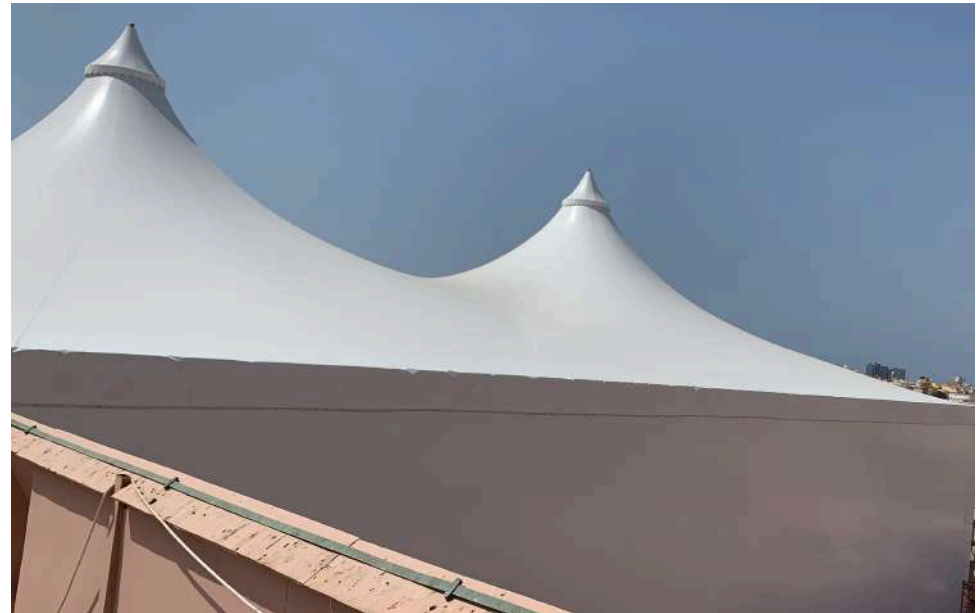
# PUBLIC & INSTITUTIONAL PROJECTS

---

## Project: Qurtubah School

Location: Jeddah, KSA

Size: 650 Sq.m



# PUBLIC & INSTITUTIONAL PROJECTS

---



# PUBLIC & INSTITUTIONAL PROJECTS

---



# PUBLIC & INSTITUTIONAL PROJECTS

---



## **Project: Jeddah School**

Location: Jeddah

Size: 4500 Sq.m

# PUBLIC & INSTITUTIONAL PROJECTS

---



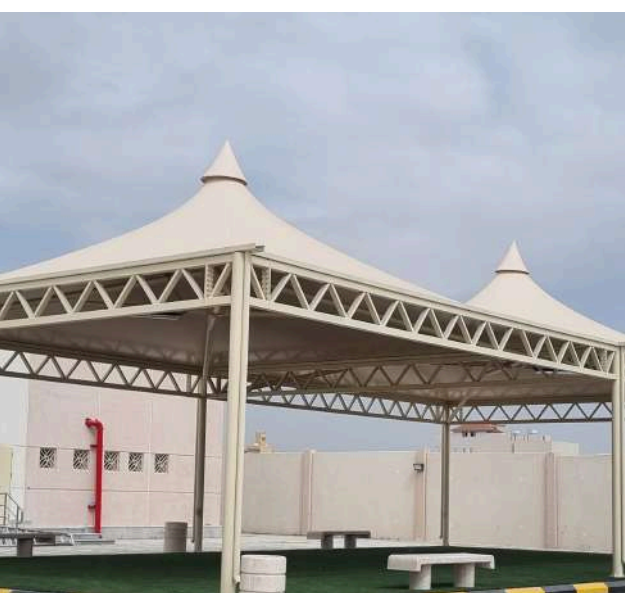
# PUBLIC & INSTITUTIONAL PROJECTS

---

## Project: public Jeddah schools

Location: Jeddah ,KSA

Size: 12000 Sq.m



# PUBLIC & INSTITUTIONAL PROJECTS

---



# PUBLIC & INSTITUTIONAL PROJECTS



# PUBLIC & INSTITUTIONAL PROJECTS

---



# PUBLIC & INSTITUTIONAL PROJECTS

---

## Project: Stadium umbrellas

Location: Jaddeh

Size: 648 Sq.m



# PUBLIC & INSTITUTIONAL PROJECTS

---



# PUBLIC & INSTITUTIONAL PROJECTS

---

## Project: Bisha Gardens

Location: Bisha, KSA

Size: 10800 Sq.m



# PUBLIC & INSTITUTIONAL PROJECTS

---



# PUBLIC & INSTITUTIONAL PROJECTS

---



# PUBLIC & INSTITUTIONAL PROJECTS

---

## Project: Altanmia garden

Location: Jeddah, KSA

Size: 1300 Sq.m



# PUBLIC & INSTITUTIONAL PROJECTS

## Project: Jeddah Gardens

Location: Jeddah

Size: 2200 Sq.m



# PUBLIC & INSTITUTIONAL PROJECTS

---



Project: **Jaddeh Gardens**

Location: **Jaddeh, KSA**

Size: **780 Sq.m**

# PUBLIC & INSTITUTIONAL PROJECTS

---



## **Project: Al Quoz municipality**

Location: Quoz, KSA

Size: 937 Sq.m

# PUBLIC & INSTITUTIONAL PROJECTS

---



## **Project: Arar Governorate**

Location: Arar, KSA

Size: 900 Sq.m

# PUBLIC & INSTITUTIONAL PROJECTS

---



**Project: Public parks in jeddah**

Location: jeddah

Size: 210 Sq.m

# PUBLIC & INSTITUTIONAL PROJECTS

---

## Project: Gardens

Location: Twill, SKA

Size: 450 Sq.m



# PUBLIC & INSTITUTIONAL PROJECTS

---



## **Project: Jaddah Gardens**

Location: Jaddah, SKA

Size: 768 Sq.m

# PUBLIC & INSTITUTIONAL PROJECTS

## Project: Garden umbrellas in qalwa aeea

Location: ALbaha, KSA

Size: 3000 Sq.m



# PUBLIC & INSTITUTIONAL PROJECTS

---



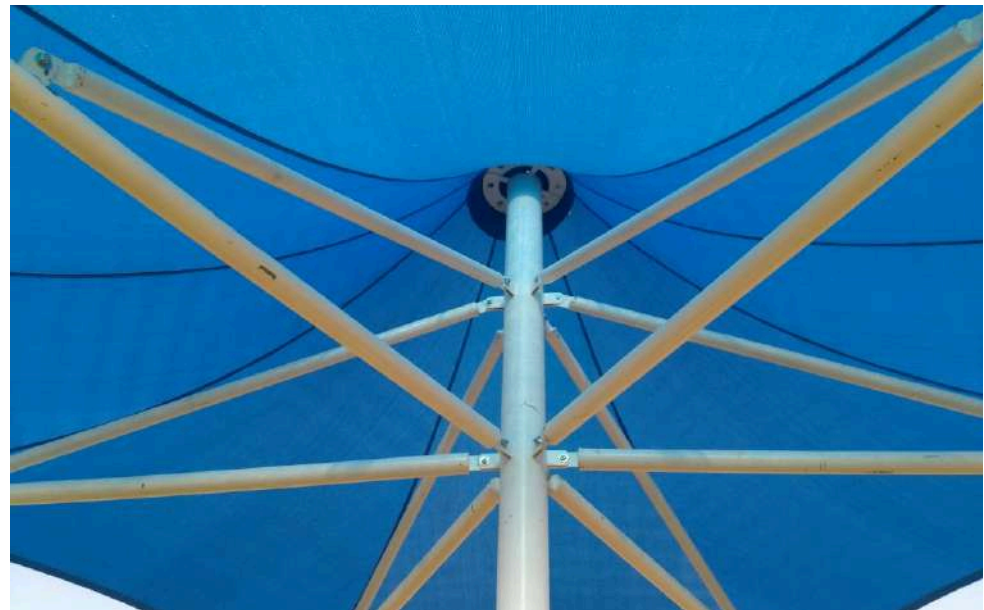
# PUBLIC & INSTITUTIONAL PROJECTS

---

## Project: Arar Gardens

Location: Arar, KSA

Size: 2160 Sq.m



# PUBLIC & INSTITUTIONAL PROJECTS

---



## **Project: Arfa Corridors**

Location: Mecca, KSA

Size: 2700 Sq.m

# PRIVATE & CUSTOM SOLUTIONS



## Aquatic Recreation Facilities

Create comfortable aquatic environments with specialized shade systems designed for pools, water parks, and recreational facilities.

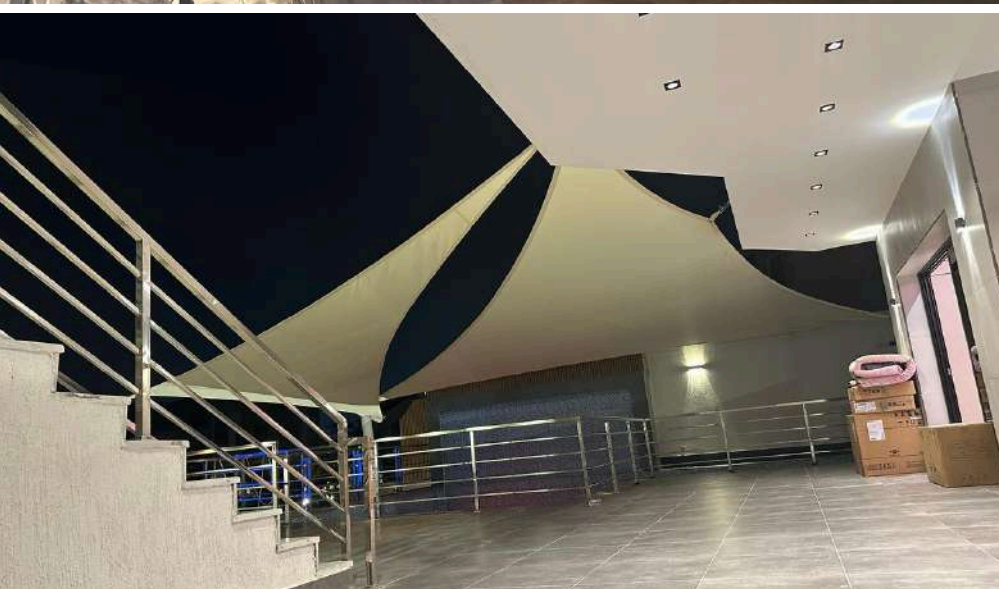
- **Pool Shade Systems**

UV-resistant canopies that reduce water evaporation while protecting swimmers from harmful rays.

- **Water Park Coverage**

Large-span structures covering play areas, slides, and spectator zones with vibrant, colorful designs.

# PRIVATE & CUSTOM SOLUTIONS



## Project: privata villa

Location: Jeddah, KSA

Size: 190 Sq.m

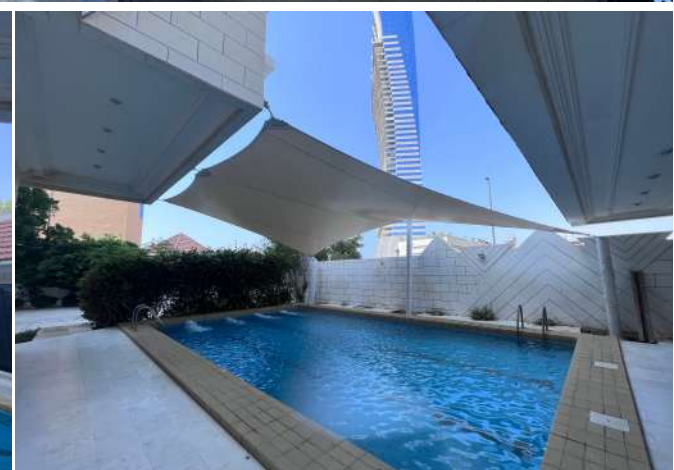
# PRIVATE & CUSTOM SOLUTIONS

---

**Project: private villa**

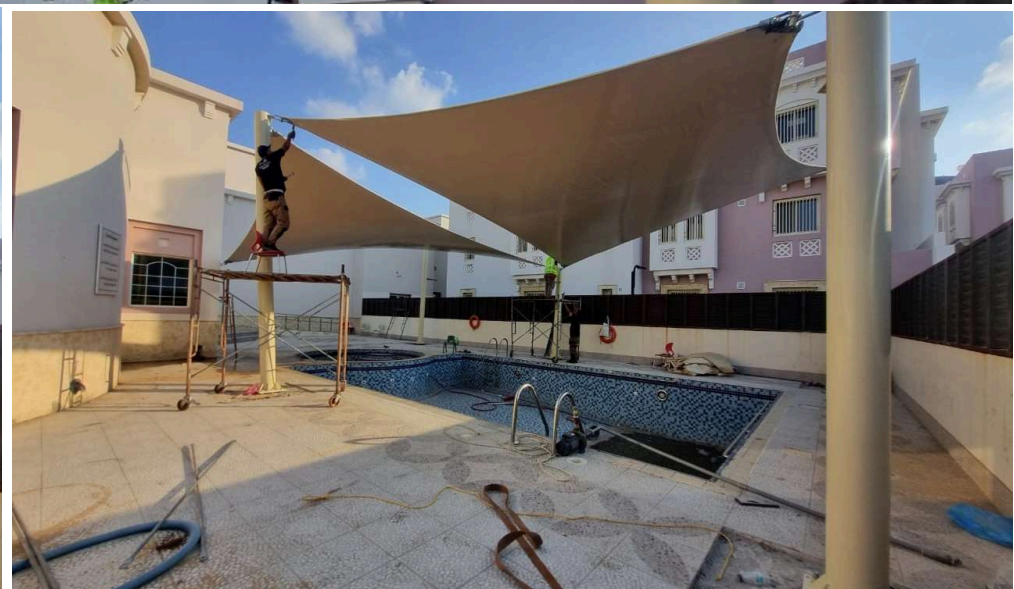
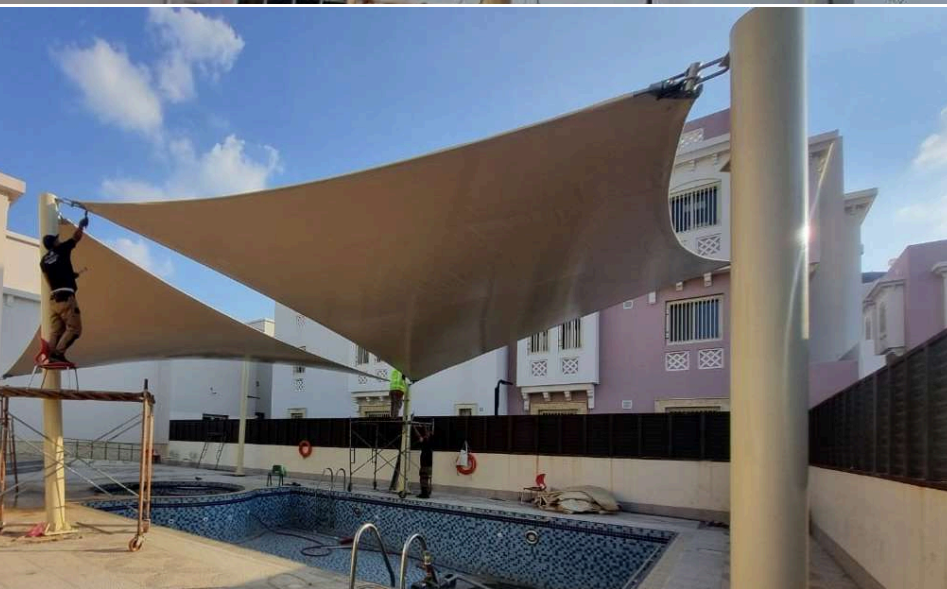
Location: Jeddah

Size: 80Sq.m



# PRIVATE & CUSTOM SOLUTIONS

---



## **Project: Pool umbrellas**

Location: Jaddeh

Size: 450 Sq.m

# PRIVATE & CUSTOM SOLUTIONS

---

## Project: Private villa

Location: Jeddah, KSA

Size: 1763 Sq.m



# PRIVATE & CUSTOM SOLUTIONS

---



## **Project: Jeddah Towers**

Location: Jeddah

Size: 5400 sq.m

# PRIVATE & CUSTOM SOLUTIONS

---

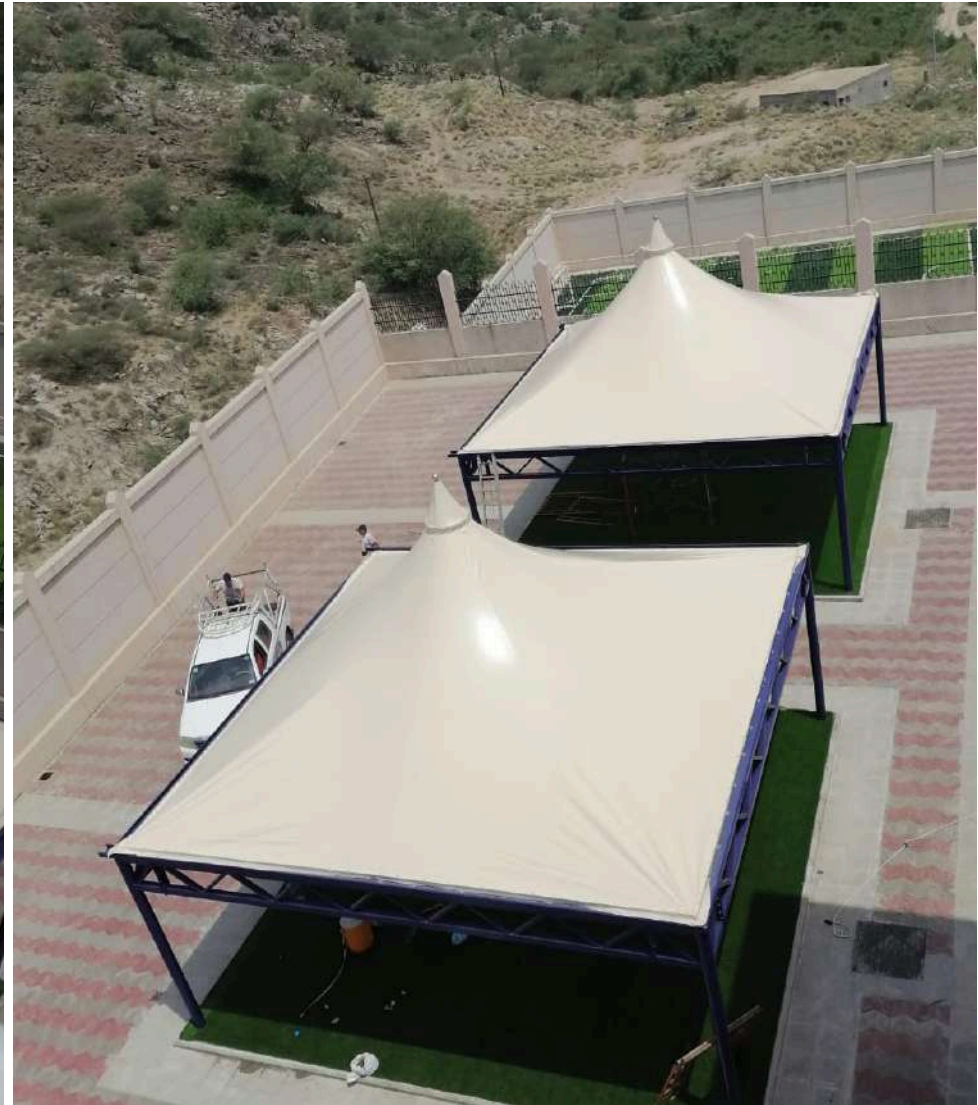
## Project: Jeddah Corniche

Location: jeddah, KSA

Size: 650 Sq.m



# PRIVATE & CUSTOM SOLUTIONS



## Project: Jizan Bani Malik Umbrellas

Location: Jizan, KSA

Size: 144 Sq.m

# THANK YOU

**Traingle Specialezd Systems For  
Industry Co.**

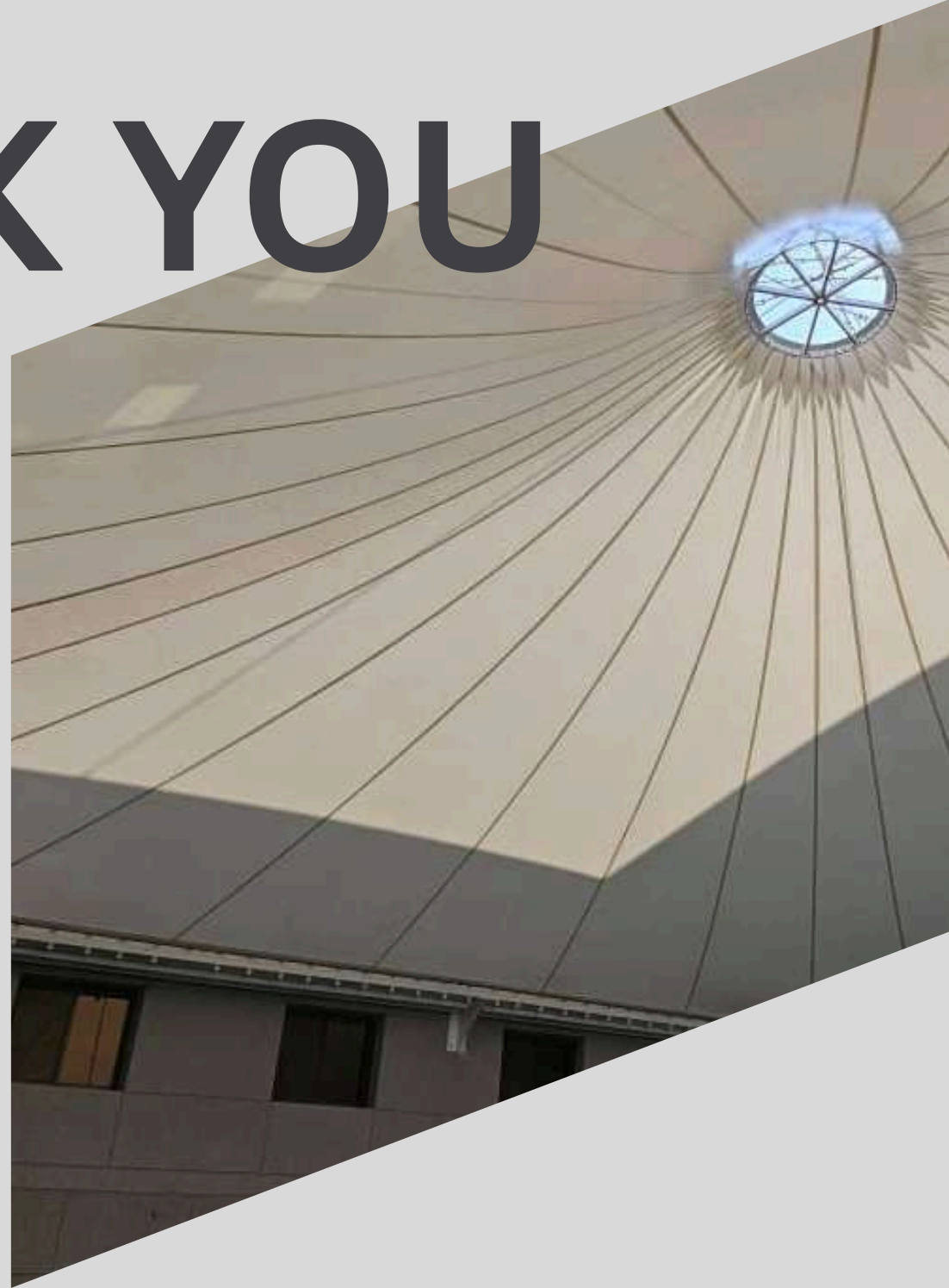
**P.O. Box 22231, Jeddah 3842**

**Kingdom of Saudi Arabia**

**Office : 00966 503 365 527**

**Website: [www.tsscoksa.com](http://www.tsscoksa.com)**

**Email: [info@tsscoksa.com](mailto:info@tsscoksa.com)**



رؤية  
VISION  
**2030**  
المملكة العربية السعودية  
KINGDOM OF SAUDI ARABIA

