

Multi-Directional Forklift (4-Directional Forklift)

Long material handling solution

MiMA[®]
Min Space, Max Performance

BANYITONG SCIENCE & TECHNOLOGY DEVELOPING CO.,LTD.

Add: Crossing of Dai he Road and Cailun Road, Hefei, China

Tel: +86 551 6219 3112

Email: sales@mimachina.com

Website: www.mimaforklift.com



Website



You always handle long materials like this?



Not safe!

The length of the material is too long and the lifting height is too high, causing the goods to shake and be unstable.
This will cause the goods to fall, causing property damage and even casualties.

Low efficiency!

This will cause the goods to fall, causing property damage and even casualties.

Low storage capacity!

This will cause the goods to fall, causing property damage and even casualties.



VNA Forklift Long Material Handling Heavy-Duty Handling AGV Forklift Body

Multi-directional forklift for aluminum industry

MiMA Multi-Directional /4-Directional Forklift
Special Designed for Long Materials!

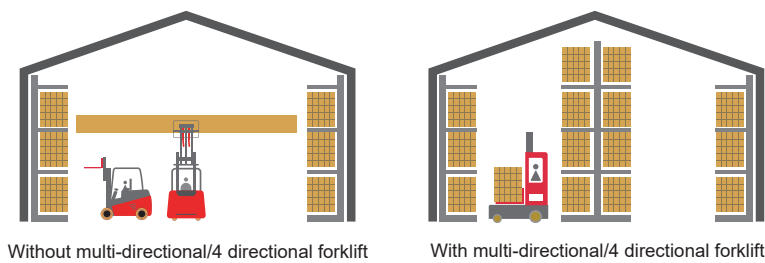
Safer, more efficient and higher storage capacity!



Multi-directional forklift for aluminum industry

Long Material Storage, Professional Solutions

MIMA electric forklifts proceed from improving the efficiency and safety of long material handling and improving the use of warehousing utilization, and developed a professional multi directional/ 4 directional forklift to solve the pain points of industries such as difficulty in long material transportation, storage difficulty, and high warehouse utilization rate. The multi directional / 4 directional forklift has a multi -directional driving function. The use multi directional/ 4 directional forklift to carry long materials, the operation is more flexible, the process is more convenient. The operator has a good vision and safer, which greatly improves the efficiency of long material handling warehousing.



MQ25 Multi-Directional



Safety

Flexible driving and good vision, making you move safe in warehouse, reduce product damage risk.



Warehousing

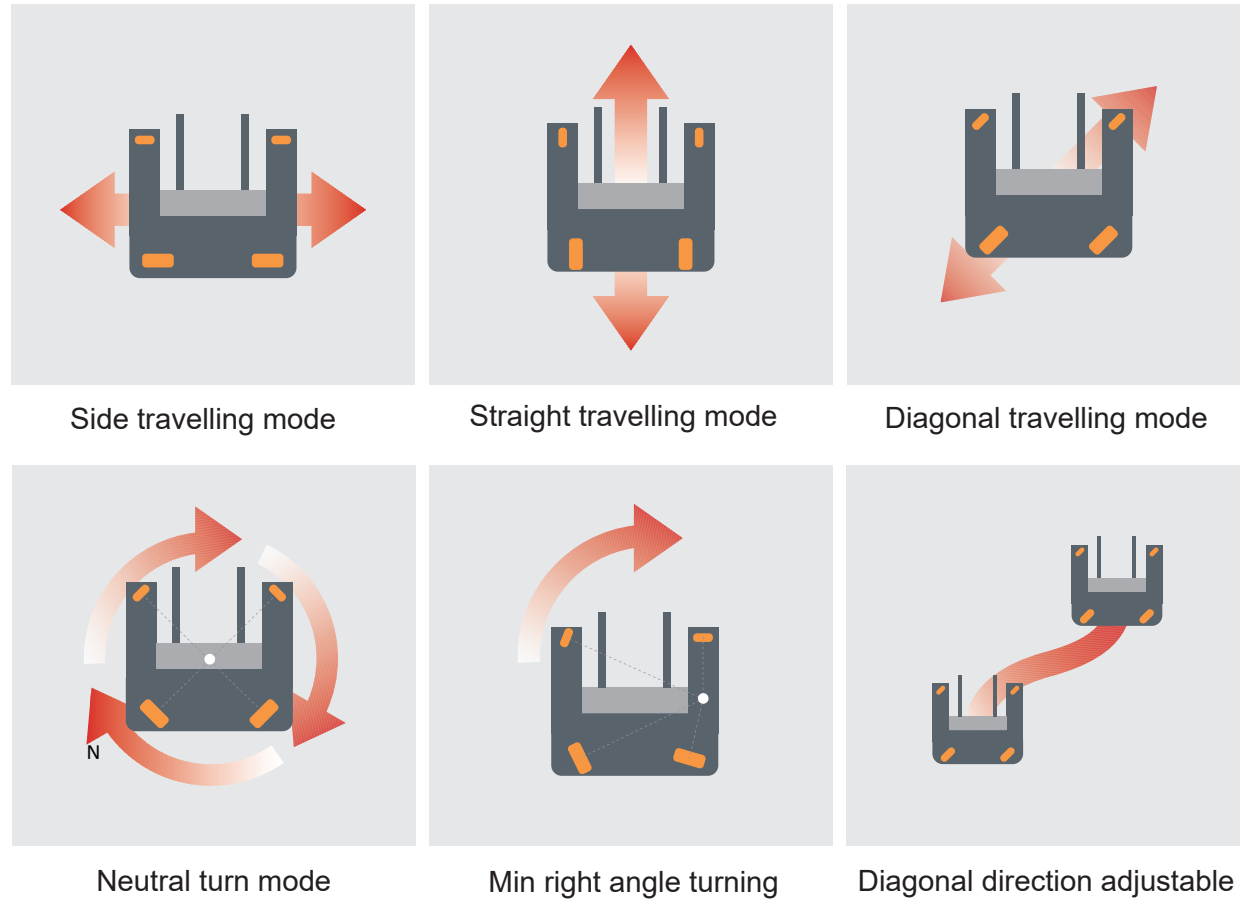
Vehicles can travel in multiple directions, reduce safety operation space, smaller aisle width, increase storage space.



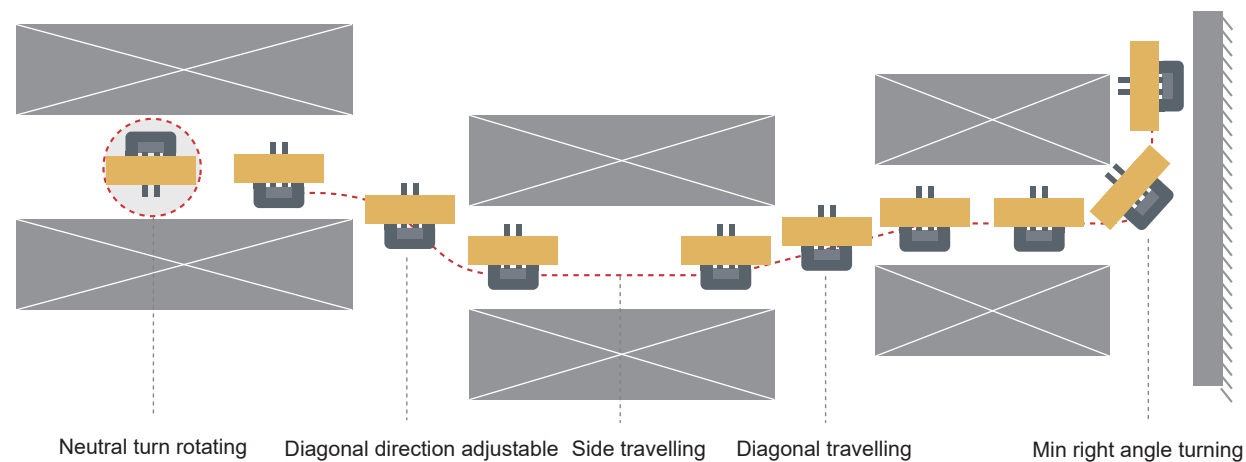
Efficiency

Special designed for long material, multi directional /4 directional travelling, indoor and outdoor using, suitable for complicated conditions.

Flexible Driving Mode



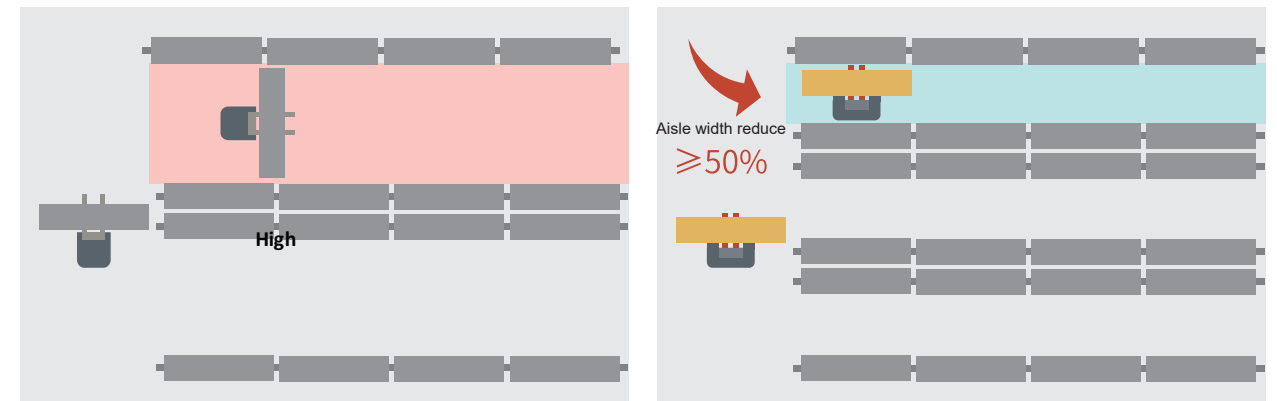
Suitable for Complex Environment



Note: MQB30 model only has straight travelling and side travelling mode, MQD30 has straight travelling, side travelling and neutral turn mode.

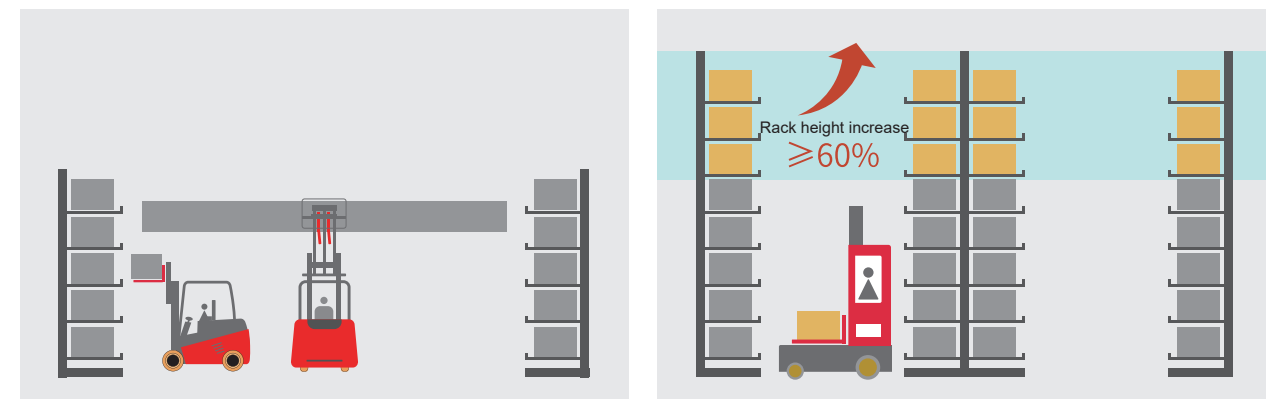
Very Narrow Aisle

Multi-directional driving mode, the longer the material, the better the effect



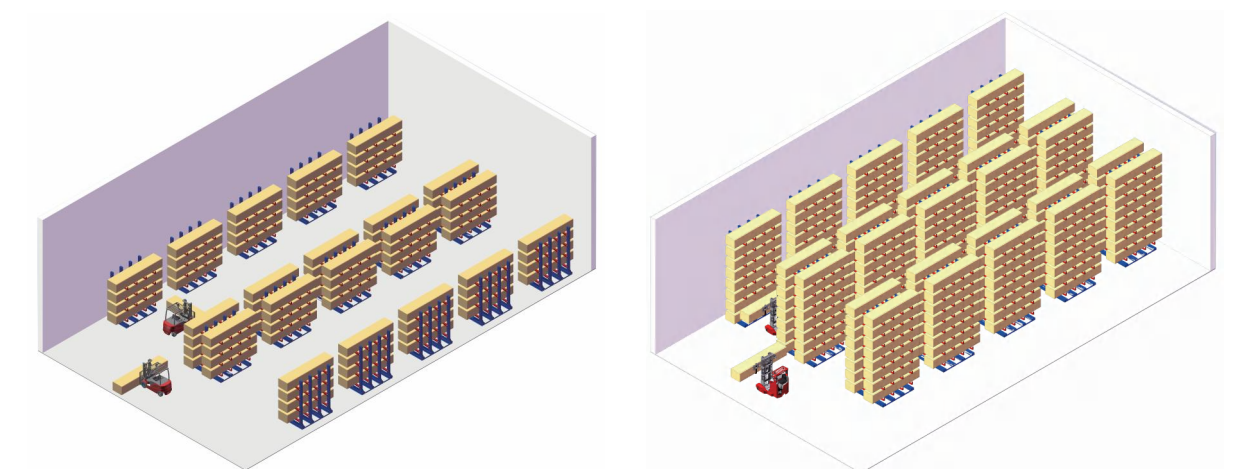
High Racks

Compared with counterbalance forklift, rack height increase 60%.



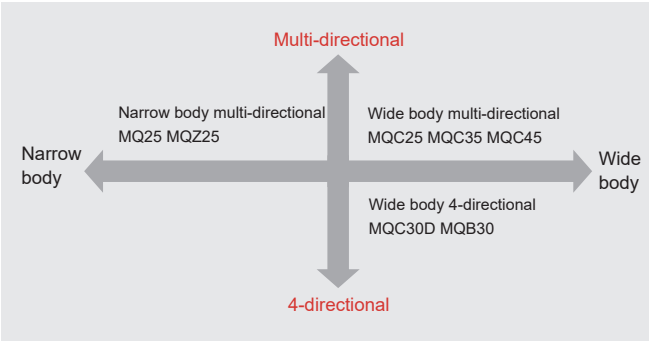
High Storage Capacity

Aisle width reduce, rack height increase, improve available warehouse area, increase storage capacity.



Mode Choose

MIMA provide full range of multi- directional/ 4-directional forklift, can satisfy different working condition and requirements.



Narrow Body Multi-Directional Forklift Suitable max 8m material length



| | |
|----------------------------------------------------|-------------------|
| MQ25 | |
| Narrow body Stand-on multi-directional forklift | |
| Rated capacity | 2.5T |
| Drive direction | Multi-directional |
| Max lift height | 8000mm |
| Operation mode | Stand-on |



| | |
|--------------------------------------------------|-------------------|
| MQZ25 | |
| Narrow body Seated multi-directional forklift | |
| Rated capacity | 2.5T |
| Drive direction | Multi-directional |
| Max lift height | 8500mm |
| Operation mode | Seated |

Wide Body Multi-Directional Forklift suitable for max 15m material length



| | |
|------------------------------------------------|-------------------|
| MQC25 | |
| Wide body Seated multi-directional forklift | |
| Rated capacity | 2.5T |
| Drive direction | Multi-directional |
| Max lift height | 8000mm |
| Operation mode | Seated |



| | |
|------------------------------------------------|-------------------|
| MQC35 | |
| Wide body Seated multi-directional forklift | |
| Rated capacity | 3.5T |
| Drive direction | Multi-directional |
| Max lift height | 8000mm |
| Operation mode | Seated |

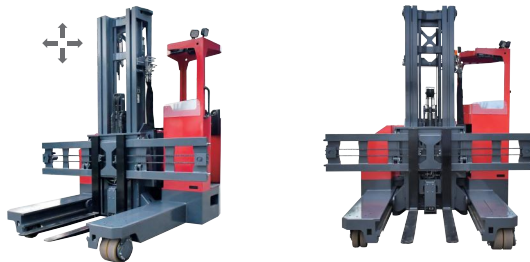


| | |
|------------------------------------------------|-------------------|
| MQC45 | |
| Wide body Seated multi-directional forklift | |
| Rated capacity | 4.5T |
| Drive direction | Multi-directional |
| Max lift height | 7000mm |
| Operation mode | Seated |

Wide Body 4-Directional Forklift suitable for max 15m material length

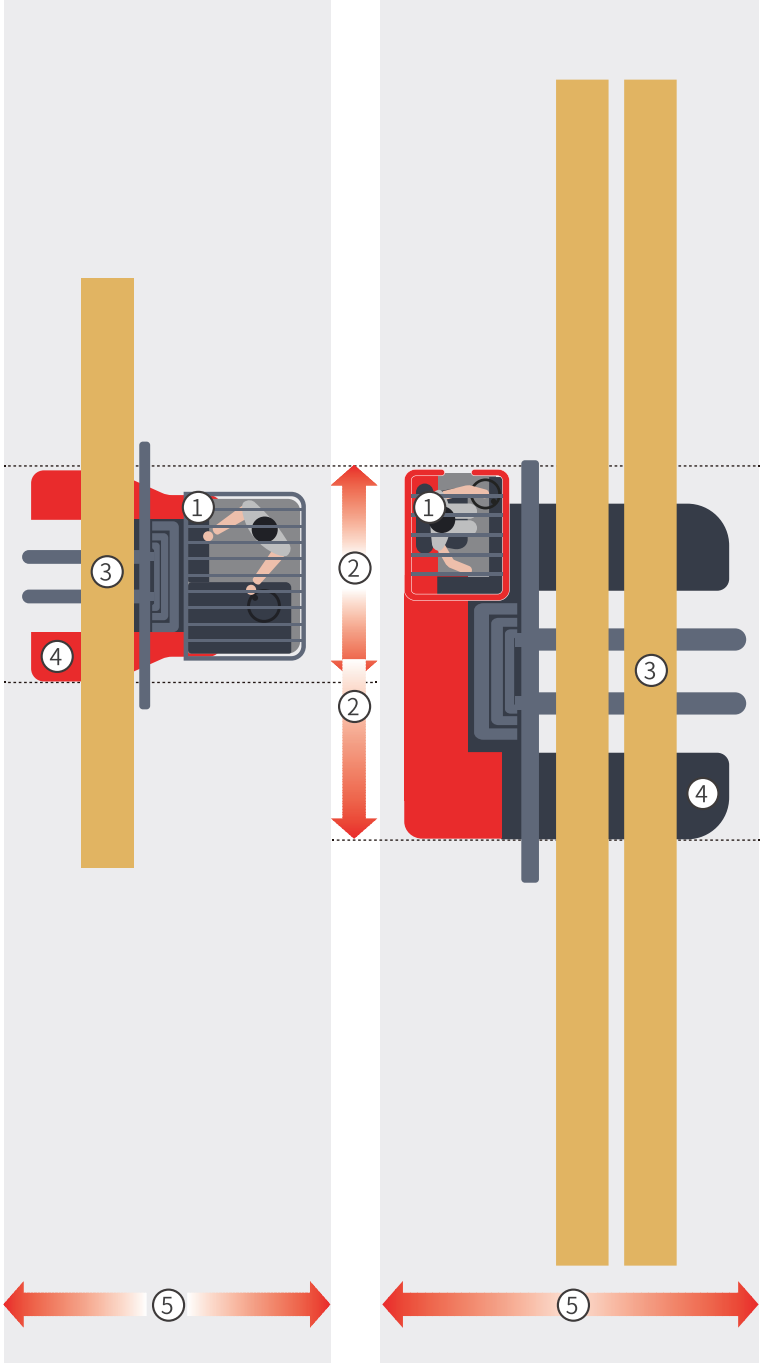


| | |
|--------------------------------------------|---------------|
| MQC30D | |
| Wide body Seated 4-directional forklift | |
| Rated capacity | 3T |
| Drive direction | 4-directional |
| Max lift height | 8000mm |
| Operation mode | Seated |



| | |
|----------------------------------------------|---------------|
| MQB30 | |
| Wide body Stand-on 4-directional forklift | |
| Rated capacity | 3T |
| Drive direction | 4-directional |
| Max lift height | 8000mm |
| Operation mode | Stand-on |

Compared with Other Models

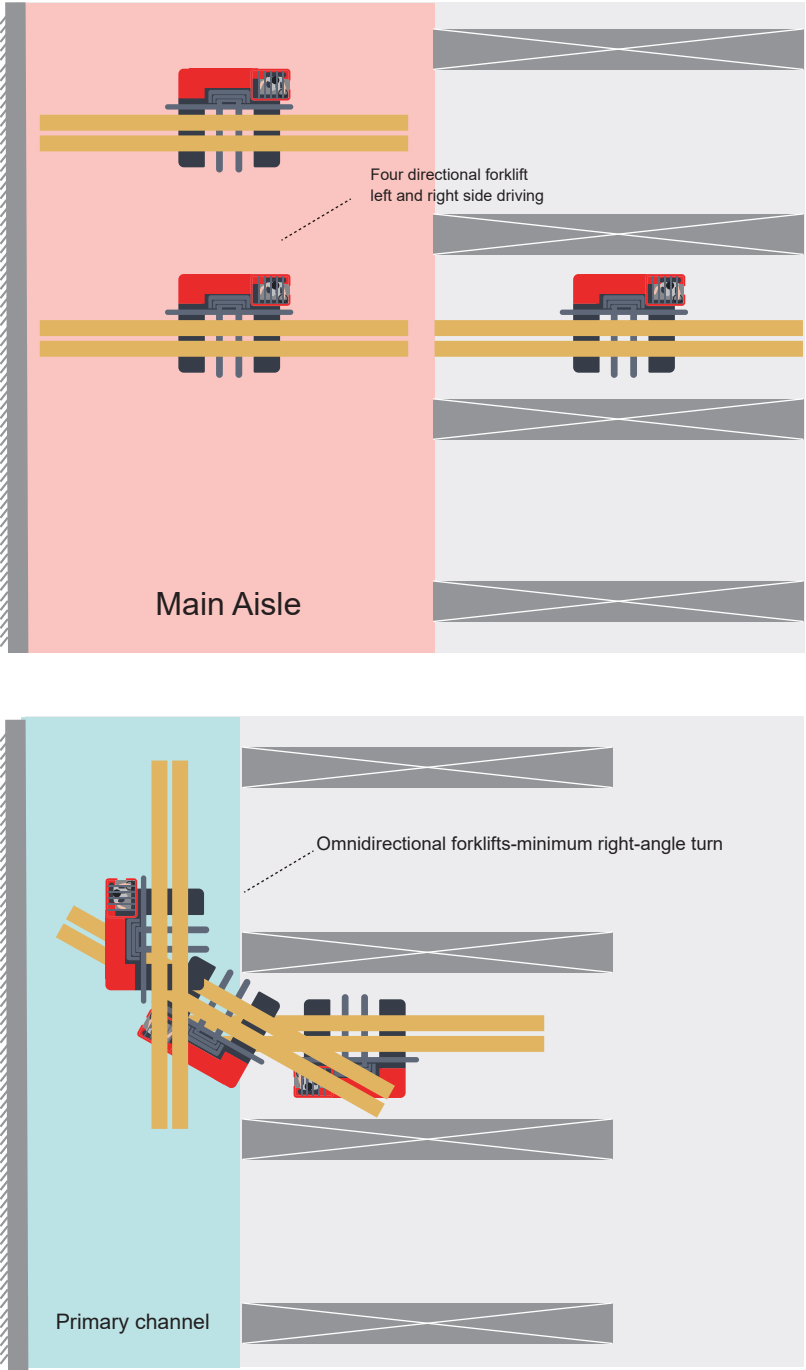


Narrow Body VS Wide Body

- 1 Cabin**
The cabin of wide body forklift is on the side, saving body space, and the driver has a better vision;
- 2 Overall width**
The wide body forklift is wider, the material that can be carried is longer
- 3 The length of longest material**
The longest material length of the narrow body forklift is 8m
The longest material length of the wide body forklift is 15m
- 4 Reach stroke / Platform length**
Compared with narrow body forklift, the forward distance of wide body forklift is greatly increased, the platform is larger, and the material handling is more stable.
- 5 Side driving aisle distance**
Both narrow body forklift and wide body forklift have very narrow side driving aisle distance, the wide body forklift just increases the load capacity and does not increase the side driving aisle distance

Narrow Body Model:
MQ25 MQZ25

Wide Body Model:
MQC25 MQC35 MQC45 MQC30D MQB30



Four directional VS Multi directional

The four directional forklift only has straight and side driving mode, and it requires a wider main aisle to adjust the body.

The multi directional forklift has multiple driving modes, the minimum right-angle turn requires a smaller main aisle distance, the body is more flexible, and the operation is more convenient.

Multi-directional Model:
MQ25 MQZ25 MQC25 MQC35 MQC45

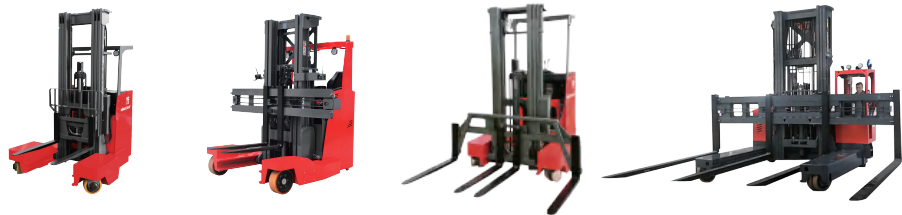
4-directional Model:
MQC30D MQB30

Main Parameter Comparison

| | | | | | | | |
|--------------------------------------|-----------------------------------------------------------------------------------|-----------------------------------------------------------------------------------|-------------------------------------------------------------------------------------|-------------------------------------------------------------------------------------|-------------------------------------------------------------------------------------|-------------------------------------------------------------------------------------|-------------------------------------------------------------------------------------|
| |  |  |  |  |  |  |  |
| | MQ25 | MQZ25 | MQC25 | MQC35 | MQC45 | MQC30D | MQB30 |
| Side driving aisle | 2800mm | 2665mm | 2900mm | 2900mm | 2900mm | 2900mm | 2700mm |
| Overall Length | 2250mm | 2384mm | 2300mm | 2300mm | 2300mm | 2330mm | 2200mm |
| Max. Lifting Height | 8000mm | 8500mm | 8000mm | 8000mm | 7000mm | 8000mm | 8000mm |
| Fork Outside Width | 244-772mm | 400-2240mm | 550-2100mm | 610-2800mm | 600-2900mm | 560-2800mm | 560-2800mm |
| Reach Stroke | 783mm | 740mm | 900mm | 1300mm | 1300mm | 1300mm | 1180mm |
| Wheel | PU | PU | Rubber Soild Wheel | Rubber Soild Wheel | Rubber Soild Wheel | Rubber Soild Wheel | PU/Driver Wheel Rubber Soild Wheel |
| Drive | Single Drive 3-wheel | Single Drive 3-wheel | Dual Drive 4-wheel | Dual Drive 4-wheel | Dual Drive 4-wheel | Single Drive 4-wheel | Single Drive 4-wheel |
| Fork positioner | Customized | Standrd | Standrd | Standrd | Standrd | Standrd | Standrd |
| Wide fork carriage and four forks | Customized | Customized | Customized | Customized | Customized | Customized | Customized |



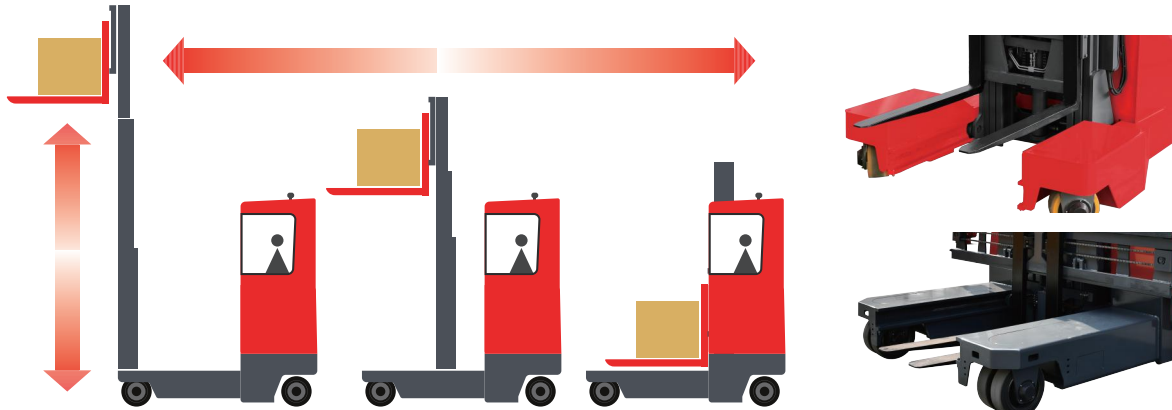
Forks



| | Standard Forks | Fork Positioner | Four Forks | Wider Fork Carriage |
|--------------------|----------------|--------------------------------------------------------|--------------------------------------------------------|---------------------|
| Fork Outside Width | 0.75m | 2.2~2.8m | 2.5m | Customized |
| Material Length | 3m | 8m(narrow body forklift) 15m (wide body forklift) | 8m(narrow body forklift) 15m (wide body forklift) | Customized |

When there is no locating fork hole, the width of the fork should be 1/3 ~ 1/5 of the length of the material.The longer the goods that need the wider the fork, so as to avoid the material unstable falling, causing material damage or loss weight. For details, please consult a professional sales engineer.

Mast+Integrated Platform



The mast can be lifted and lowered + forward and backward, which is convenient to fork long materials. The lower center of gravity and wide platform provide a stable foundation for long material load transportation.

Wheel



PU wheel

Rubber solid wheel

Rubber solid wheel

The standard rubber wheel of the forklift will have different appearance according to the provision of the supplier, which will not affect the use effect.

Details of Forklift



Mast forward moving device



High precision mast



Laser positioning



Laser HD camera



Overhead guard



Warning light



Wheel display function



Display *

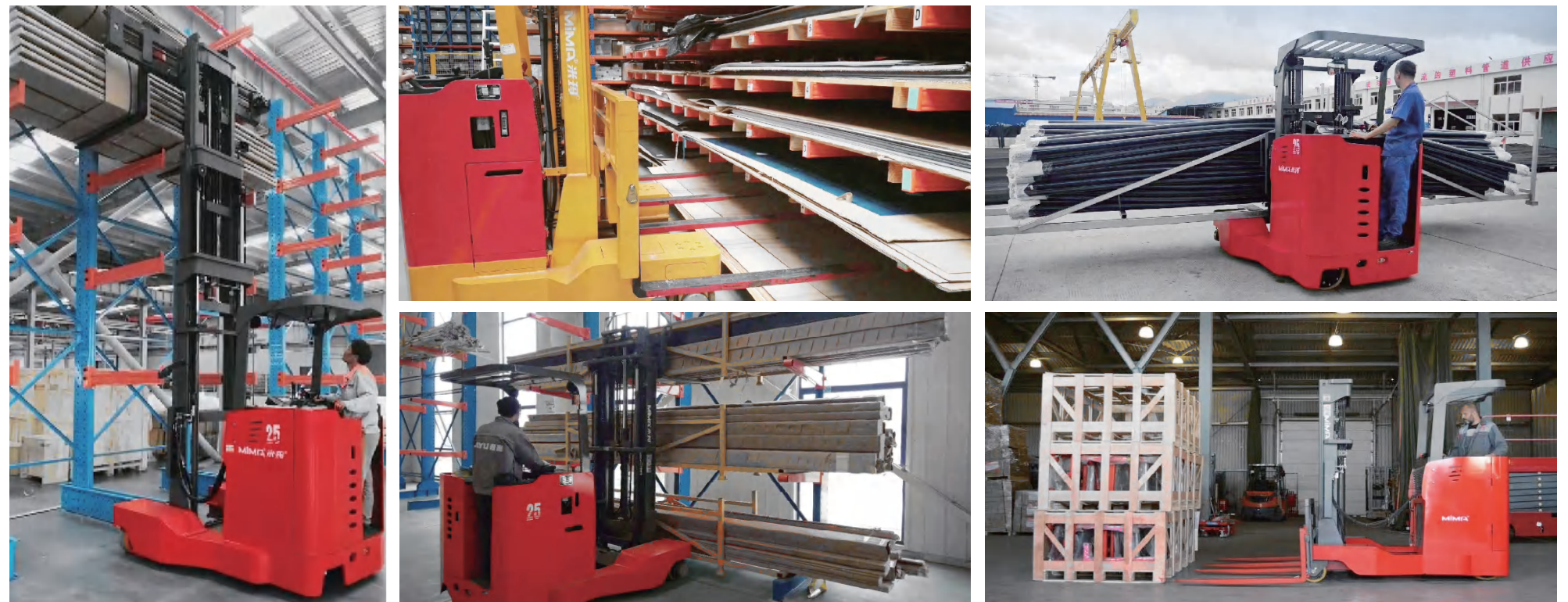
* Standard configuration for lifting height above 5m, optional for less than 5 m

- A forklift that can work seamlessly indoors and outdoors.
- With 13+ years experience of R & D and production multi directional and four directional forklifts .
- Delivered over 1,000 multi directional and four directional forklifts to global customers.
- Perfect sales service system, complete after -sales service, and worry -free.

Aluminium Profile Industry



Pipeline and Wood Industry



Textile Industry

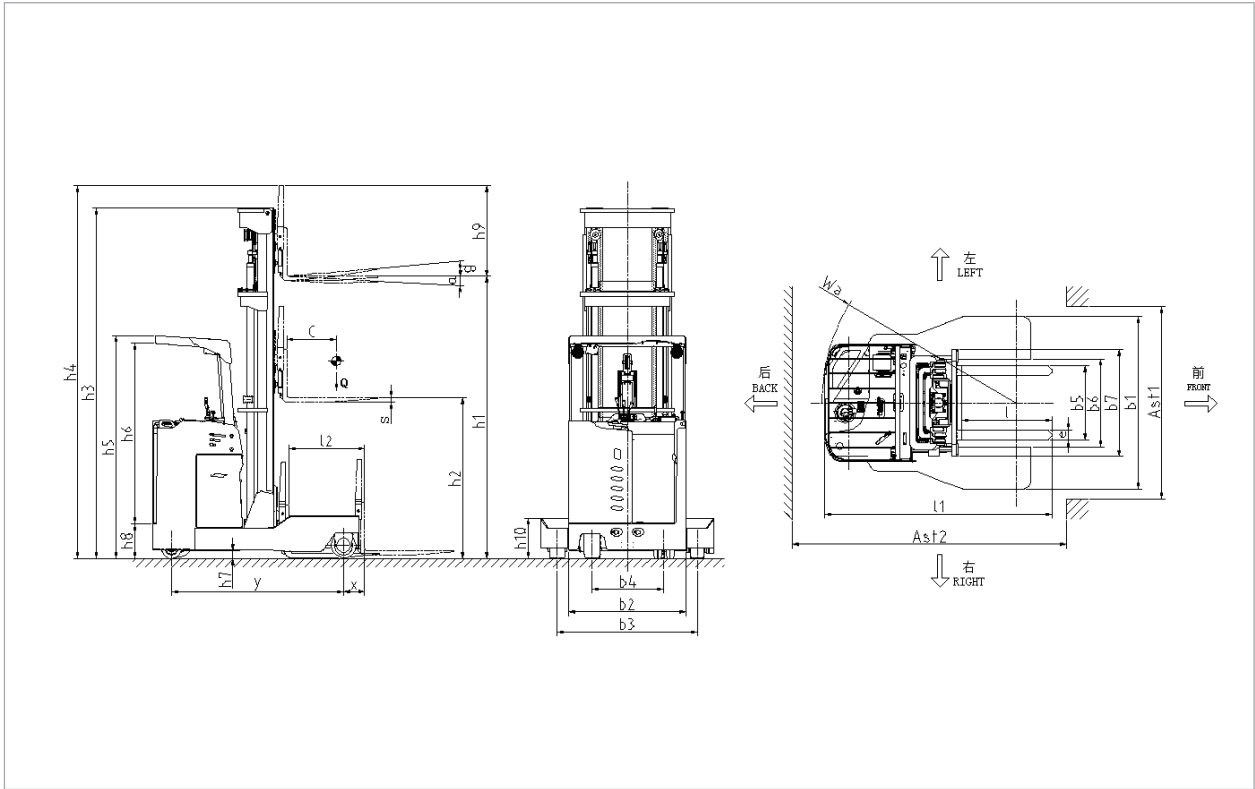


Long Material Industry

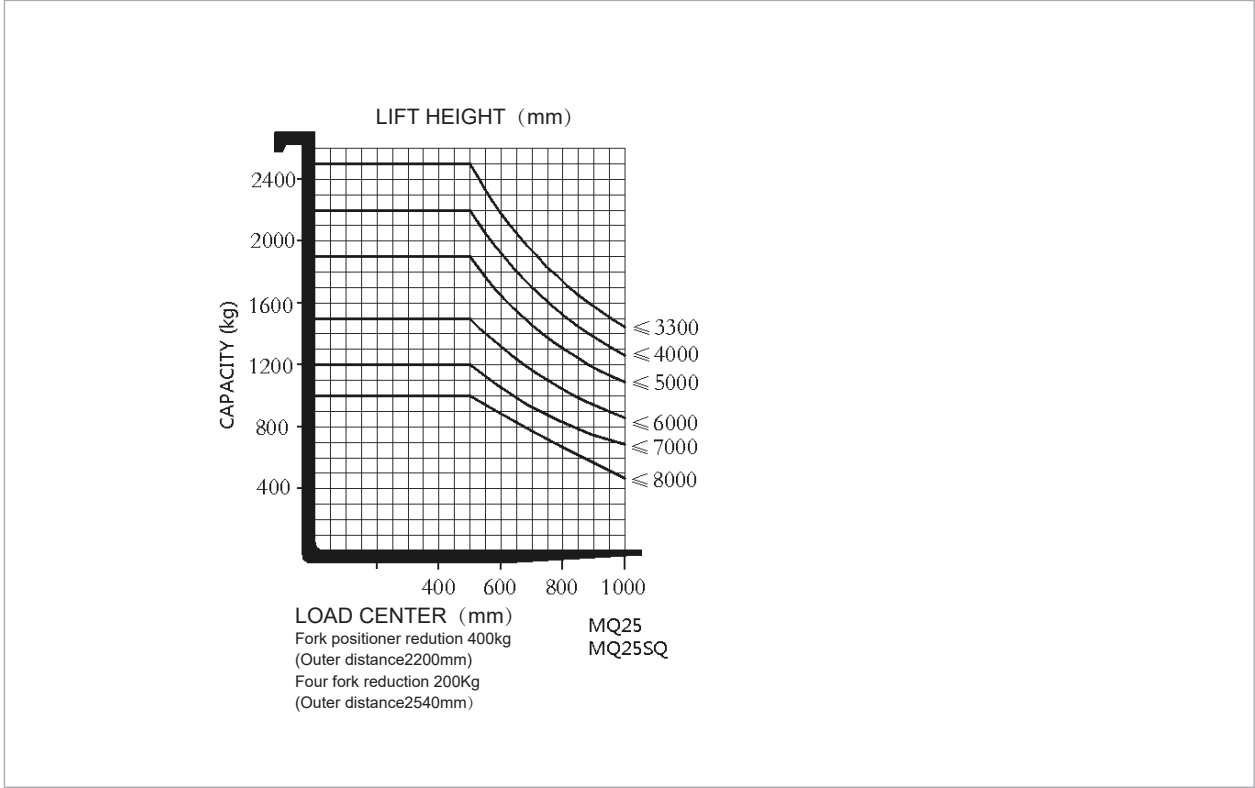


| Standard | | | | |
|----------|--------------------------------------------------------|-----------------|-----------------|------------|
| 1.1 | Manufacturer | MIMA | MIMA | |
| 1.2 | Model | MQ2530 | MQ2545SQ | |
| 1.3 | Power Type | Battery | Battery | |
| 1.4 | Operation Type | Stand-on | Stand-on | |
| 1.5 | Rated Capacity | Q(kg) | 2500 | 2500 |
| 1.6 | Load Center | C(mm) | 500 | 500 |
| 1.7 | Front Overhang | x(mm) | 175 | 175 |
| 1.8 | Wheelbase | y(mm) | 1700 | 1700 |
| Weight | | | | |
| 2.1 | Service Weight(incl.battery) | kg | ≈3700 | ≈3900 |
| 2.2 | Battery Weight (±5%) | kg | 665 | 665 |
| Wheel | | | | |
| 3.1 | Wheel Types | PU | PU | |
| 3.2 | Front wheel (Diameter×Width) x2pc | mm | φ267×114 | φ267×114 |
| 3.3 | Rear drive wheel (Diameter×Width)x 1pc | mm | φ380×165 | φ380×165 |
| 3.4 | Rear balance wheel (Diameter×Width)x 2pc | | φ204×76 | φ204×76 |
| 3.5 | Wheel tread,front | b3(mm) | 1304 | 1304 |
| 3.6 | Wheel tread,rear | b4(mm) | 726 | 726 |
| Size | | | | |
| 4.1 | Fork Tilt front/rear | α/β(°) | 3/5 | 2/6 |
| 4.2 | Lift height | h1(mm) | 3000 | 4500 |
| 4.3 | Free lift height with load backrest | h2(mm) | 80 | 1320 |
| 4.4 | Mast closed height | h3(mm) | 2082 | 2292 |
| 4.5 | Mast extended height with load-backrest | h4(mm) | 3960 | 5460 |
| 4.6 | Overhead guard height | h5(mm) | 2300 | 2300 |
| 4.7 | Height from overhead guard to driving board | h6(mm) | / | / |
| 4.8 | Driving board height | h8(mm) | 350 | 350 |
| 4.9 | Ground clearance | h7(mm) | 80 | 80 |
| 4.10 | Load backrest height | h9(mm) | 970 | 970 |
| 4.11 | Leg height | h10(mm) | 405 | 405 |
| 4.12 | Overall length(incl.forks) | l1/l2(mm) | 2250/2080 | 2300/2086 |
| 4.13 | Reach stroke | l3(mm) | 783 | 733 |
| 4.14 | Overall width | b1(mm) | 1595 | 1595 |
| 4.15 | Fork size | l/e/s(mm) | 920×122×40 | 920×122×40 |
| 4.16 | Body tail width | b2(mm) | 1190 | 1190 |
| 4.17 | Fork outside width | b5(mm) | 244~772 | 244~772 |
| 4.18 | Inner leg width | b6(mm) | 892 | 892 |
| 4.19 | Fork carriage width | b7(mm) | 1088 | 1088 |
| 4.20 | Diameter of no-load rotation in situ | Wk(mm) | 2420 | 2420 |
| Function | | | | |
| 5.1 | Driving speed(load/unload) | km/h | 7.0~9.0 | 7.0~9.0 |
| 5.2 | Lifting speed(load/unload) | mm/s | 240/320 | 220/300 |
| 5.3 | Lowering speed(load/unload) | mm/s | 340/290 | 310/260 |
| 5.4 | Straight driving max.gradeability.load/unload(S2-5min) | %(tanθ) | 10 | 10 |
| 5.5 | Side driving max.gradeability.load/unload(S2-5min) | %(tanθ) | 5 | 5 |
| 5.6 | Steering system | EPS | EPS | |
| 5.7 | Drive wheel display | LED Screen | LED Screen | |
| 5.8 | Brake type | Electromagnetic | Electromagnetic | |
| Drive | | | | |
| 6.1 | Drive motor type | AC | AC | |
| 6.2 | Drive motor(S2-60min) | kw | 5.5 | 5.5 |
| 6.3 | Lifting motor type | AC | AC | |
| 6.4 | Lifting motor(S3-15%) | kw | 8.6 | 8.6 |
| 6.5 | Battery voltage/capacity | V/Ah | 48/400 | 48/400 |
| Other | | | | |
| 7.1 | Battery change type | Side pull | Side pull | |
| Option | | | | |
| 8.1 | Video display | Mobile camera | Mobile camera | |
| 8.2 | Fork positioner | Customized | Customized | |
| 8.3 | Super wide fork carriage and four fork | Customized | Customized | |

2D View



Load Chart



Standard

| | | | |
|-----|--------------------------------------------------|---------|------|
| 1.1 | Manufacturer | MIMA | |
| 1.2 | Model | MQZ25SQ | |
| 1.3 | Power Type | Battery | |
| 1.4 | Operation Type | Seated | |
| 1.5 | Rated Capacity | Q(kg) | 2500 |
| 1.6 | Load Center | C(mm) | 600 |
| 1.7 | Distance from center of front wheel to fork face | x(mm) | 492 |
| 1.8 | Front Overhang | x1(mm) | 246 |
| 1.9 | Wheelbase | y(mm) | 1700 |

Weight

| | | | |
|-----|------------------------------|----|------|
| 2.1 | Service Weight(incl.battery) | kg | 5150 |
|-----|------------------------------|----|------|

Wheel

| | | | |
|-----|--------------------------------------------|---------|----------|
| 3.1 | Wheel Types | | PU |
| 3.2 | Load Wheel | mm | φ343×130 |
| 3.3 | Drive wheel | mm | φ400×160 |
| 3.4 | Number of wheels,front/rear(x=drive wheel) | | 2/1X |
| 3.5 | Wheel tread,load side | b11(mm) | 1500 |

Size

| | | | |
|------|-----------------------------------------|-----------|------------|
| 4.1 | Fork Tilt front/rear | α/β(°) | 1/5 |
| 4.2 | Mast closed height | h1(mm) | 3829 |
| 4.3 | Free lift height | h2(mm) | 2866 |
| 4.4 | Lift height | h3(mm) | 8500 |
| 4.5 | Mast extended height with load-backrest | h4(mm) | 9464 |
| 4.6 | Overhead guard height | h6(mm) | 2245 |
| 4.7 | Seat height | h7(mm) | 1186 |
| 4.8 | First stage height | h8(mm) | 390 |
| 4.9 | Leg height | h10(mm) | 456 |
| 4.10 | Overall length | l1(mm) | 2384 |
| 4.11 | Length from tail to fork face | l2(mm) | 1465 |
| 4.12 | Overall length | b1/b2(mm) | 1790/1270 |
| 4.13 | Fork size | l/e/s(mm) | 920×100×45 |
| 4.14 | Fork carriage width | b3(mm) | 2300 |
| 4.15 | Fork outside width | b5(mm) | 400-2240 |
| 4.16 | Inner width of Legs | b4(mm) | 977 |
| 4.17 | Reach distance | l4(mm) | 740 |
| 4.18 | Mast clearance | m1(mm) | 75 |
| 4.19 | Diameter of no-load rotation in situ | Wk(mm) | 2530 |

Function

| | | | |
|-----|---------------------------------------|----------|-----------------|
| 5.1 | Driving speed(load/unload) | km/h | 8.0/10 |
| 5.2 | Lifting speed(load/unload) | mm/s | 260/330 |
| 5.3 | Lowering speed(load/unload) | mm/s | 300/250 |
| 5.4 | Max gradeability load/unload(S2-5min) | %(tanθ) | 10 |
| 5.5 | Brake type | | Electromagnetic |

Drive

| | | | |
|-----|--------------------------|------|--------|
| 6.1 | Driving motor(S2-60min) | kw | 8 |
| 6.2 | Lifting motor(S3-15%) | kw | 15 |
| 6.3 | Battery voltage/capacity | V/Ah | 48/560 |
| 6.4 | Battery weight | kg | 921 |

Other

| | | | |
|-----|----------------------|--|----|
| 7.1 | Drive control method | | AC |
|-----|----------------------|--|----|

Mast specification

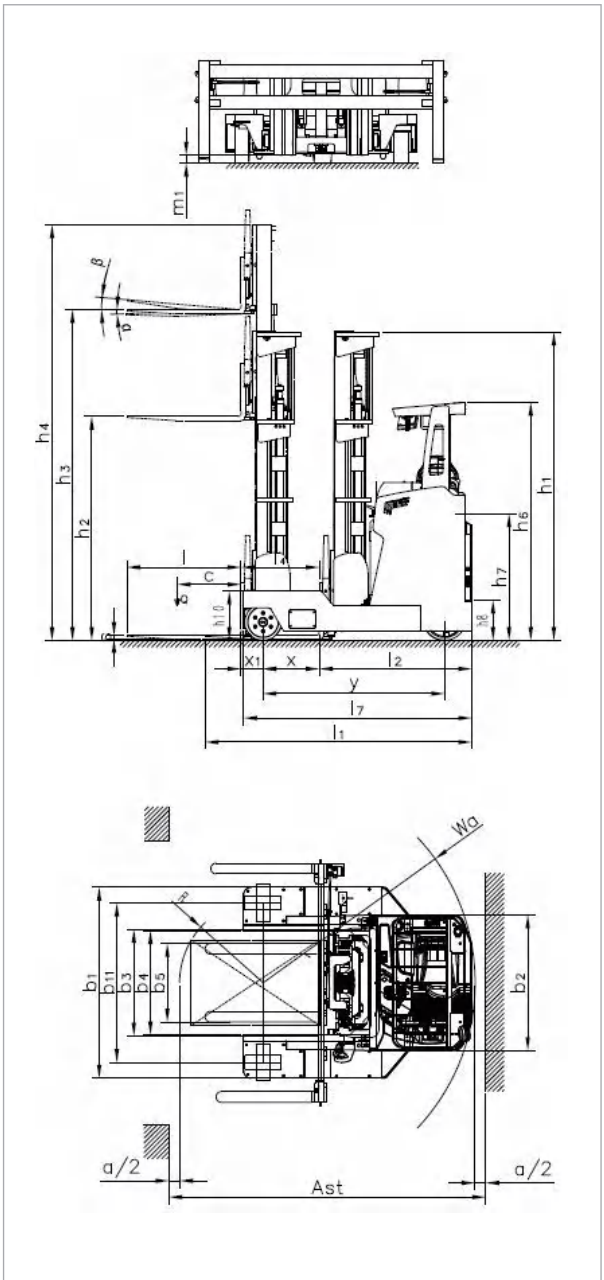
Triplex Full Free Mast

| Model | MQZ | 25SQ-45 | 25SQ-50 | 25SQ-55 | 25SQ-60 | 25SQ-65 | 25SQ-70 | 25SQ-72 | 25SQ-75 | 25SQ-80 |
|-----------------------------------------|--------|---------|---------|---------|---------|---------|---------|---------|---------|---------|
| Lift height | h3(mm) | 4500 | 5000 | 5500 | 6000 | 6500 | 7000 | 7200 | 7500 | 8000 |
| Mast extended height with load backrest | h4(mm) | 5464 | 5964 | 6464 | 6964 | 7464 | 7964 | 8164 | 8464 | 8964 |
| Mast closed height | h1(mm) | 2395 | 2562 | 2728 | 2895 | 3062 | 3228 | 3295 | 3395 | 3662 |
| Free lift height | h2(mm) | 1434 | 1600 | 1768 | 1934 | 2100 | 2268 | 2334 | 2434 | 2700 |

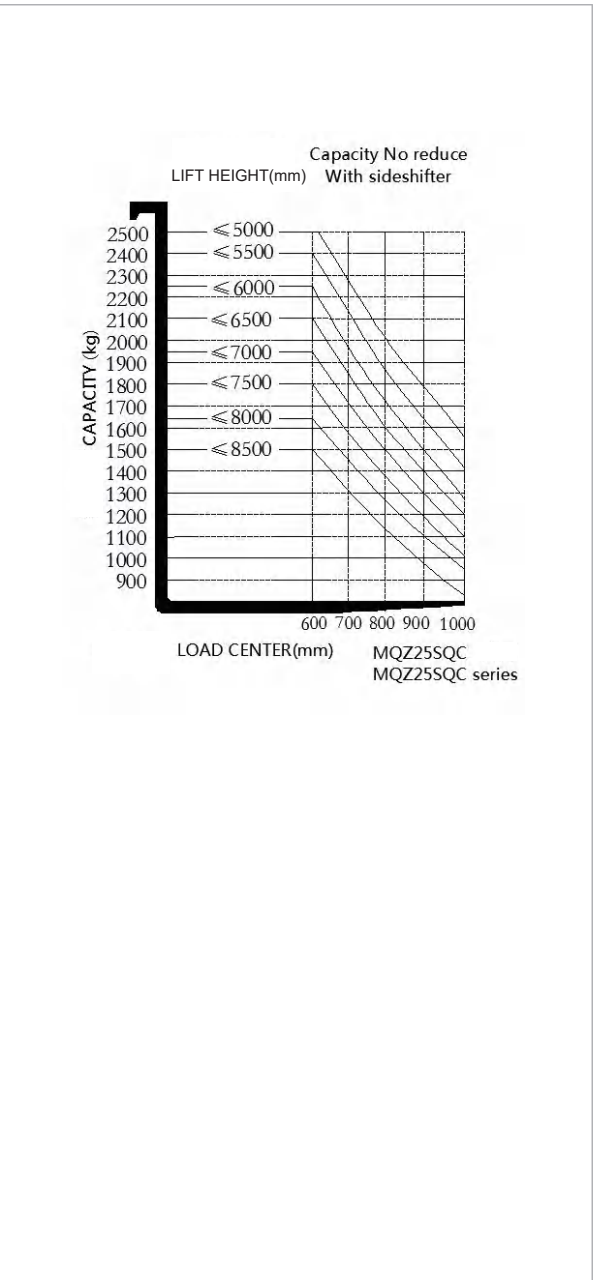
Triplex Full Free Mast

| Model | MQZ | 25SQ-85 | | | | | | | | |
|-----------------------------------------|--------|---------|--|--|--|--|--|--|--|--|
| Lift height | h3(mm) | 8500 | | | | | | | | |
| Mast extended height with load backrest | h4(mm) | 9464 | | | | | | | | |
| Mast closed height | h1(mm) | 3829 | | | | | | | | |
| Free lift height | h2(mm) | 2866 | | | | | | | | |

2D View

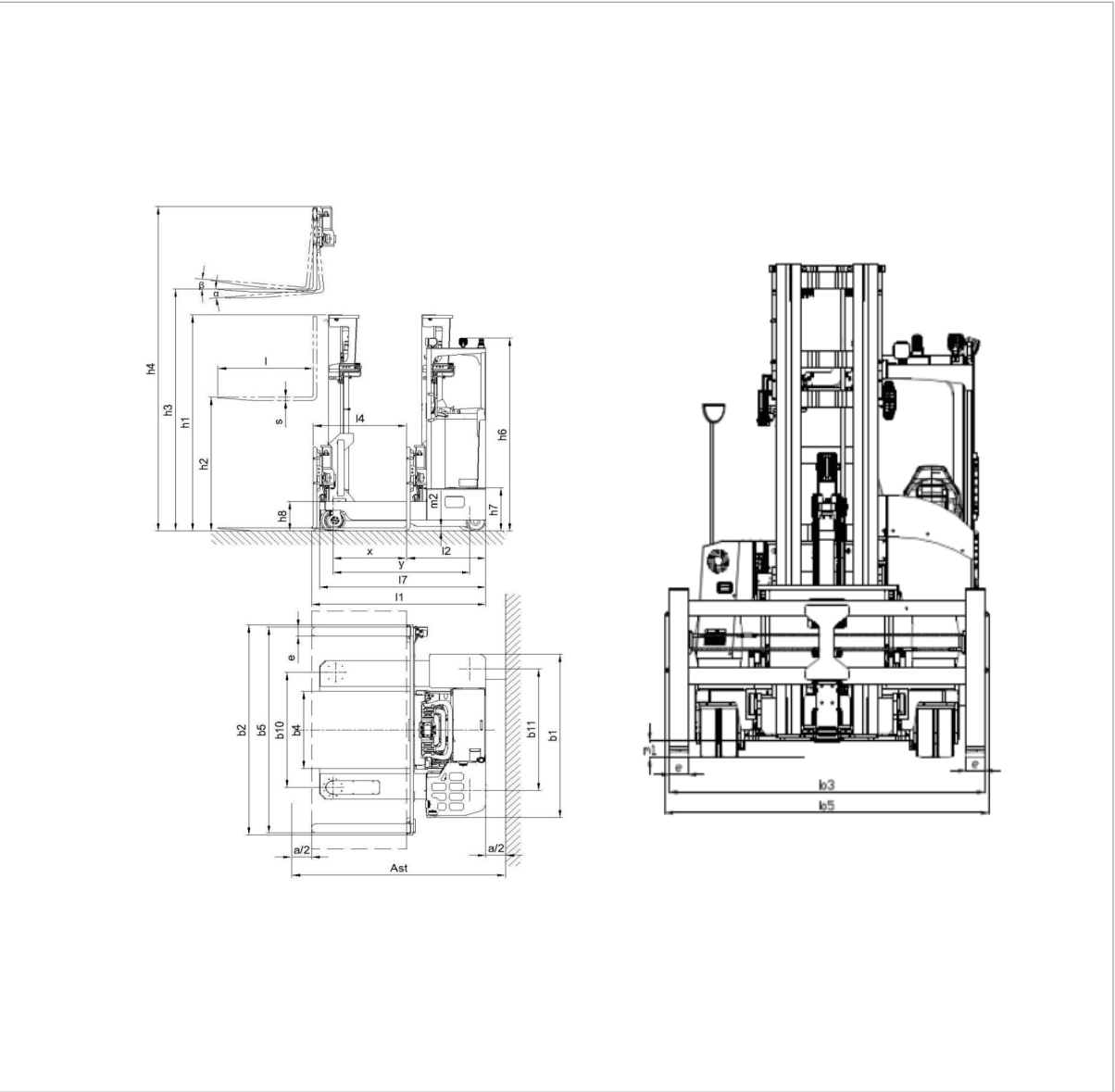


Load Chart

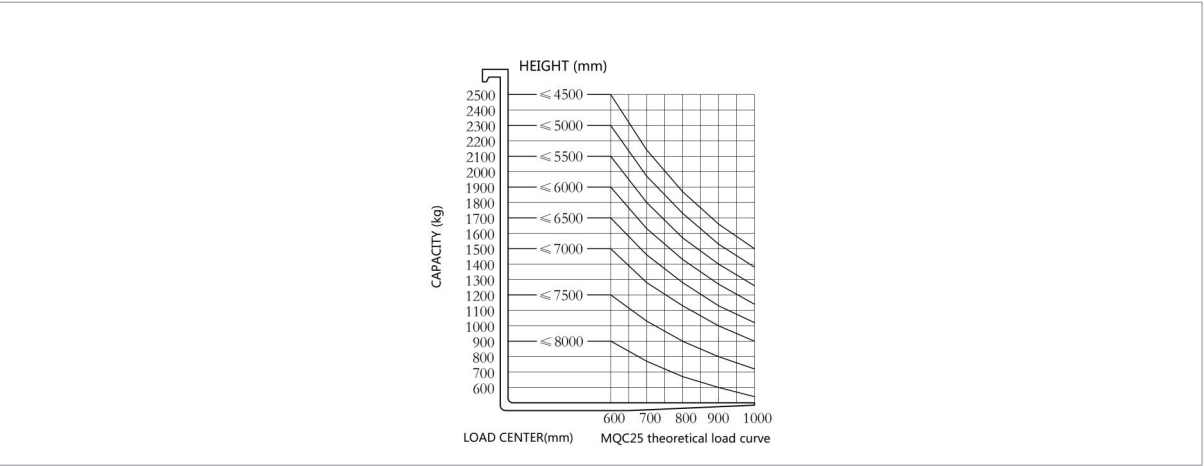


| Standard | | | |
|----------|--------------------------------------------|----------------|-------------------|
| 1.1 | Manufacturer | | MIMA |
| 1.2 | Model | | MQC25 |
| 1.3 | Power Type | | Battery |
| 1.4 | Operation Type | | Seated |
| 1.5 | Rated Capacity | Q(kg) | 2500 |
| 1.6 | Load Center | C(mm) | 600 |
| 1.7 | Front Overhang | x(mm) | 270 |
| 1.8 | Wheelbase | y(mm) | 1560 |
| Weight | | | |
| 2.1 | Service Weight(incl.battery) | kg | 5385① |
| Wheel | | | |
| 3.1 | Wheel Types | | Solid rubber tyre |
| 3.2 | Front wheel | | 12×4.5/φ305×114 |
| 3.3 | Rear wheel | | 13.5×5.5/φ343×140 |
| 3.4 | Number of wheels,front/rear(x=drive wheel) | | 4/2X |
| 3.5 | Wheel tread,drive | b10 (mm) | 1320 |
| 3.6 | Wheel tread,load | b11 (mm) | 1442 |
| Size | | | |
| 4.1 | Mast/Fork Tilt front/rear | α/β(°) | 2/4 |
| 4.2 | Mast closed height | h1(mm) | 2970 |
| 4.3 | Free lift height | h2(mm) | 1915 |
| 4.4 | Lift height | h3(mm) | 6000 |
| 4.5 | Mast extended height with load-backrest | h4(mm) | 7040 |
| 4.6 | Overhead guard height | h6(mm) | 2550 /2430 |
| 4.7 | Driving board height | h7(mm) | 730 |
| 4.8 | Leg height | h8(mm) | 410 |
| 4.9 | Overall length | l1 (mm) | 2300 |
| 4.10 | Overall width | b1/b2 (mm) | 1850/2160 |
| 4.11 | Fork size | s / e / l (mm) | 45/125/1070 |
| 4.12 | Fork outside width | b3 (mm) | 550~2100 |
| 4.13 | Inner width of legs | b4 (mm) | 950 |
| 4.14 | Reach stroke | l4 (mm) | 900 |
| 4.15 | Mast ground clearance | m1 (mm) | 100 |
| Function | | | |
| 5.1 | Driving speed load/unload | km/h | 8-9 |
| 5.2 | Lifting speed load/unload | km/h | 200/300 |
| 5.3 | Lowering speed load/unload | | 300/220 |
| 5.4 | Max gradeability of load /unload | %(tanθ) | 8/10 |
| 5.5 | Brake Type | | Electromagnetic |
| Drive | | | |
| 6.1 | Driving Motor,S2=60 | kw | 6.5AC |
| 6.2 | Lifting motor,S3=15% | kw | 12.5AC |
| 6.3 | Battery voltage/capacity | V/Ah | 500 |
| 6.4 | Battery weight | kg | 810 |
| 6.5 | Steering system | | EPS |
| Other | | | |
| 7.1 | Battery change type | | Hoisting |

2D View

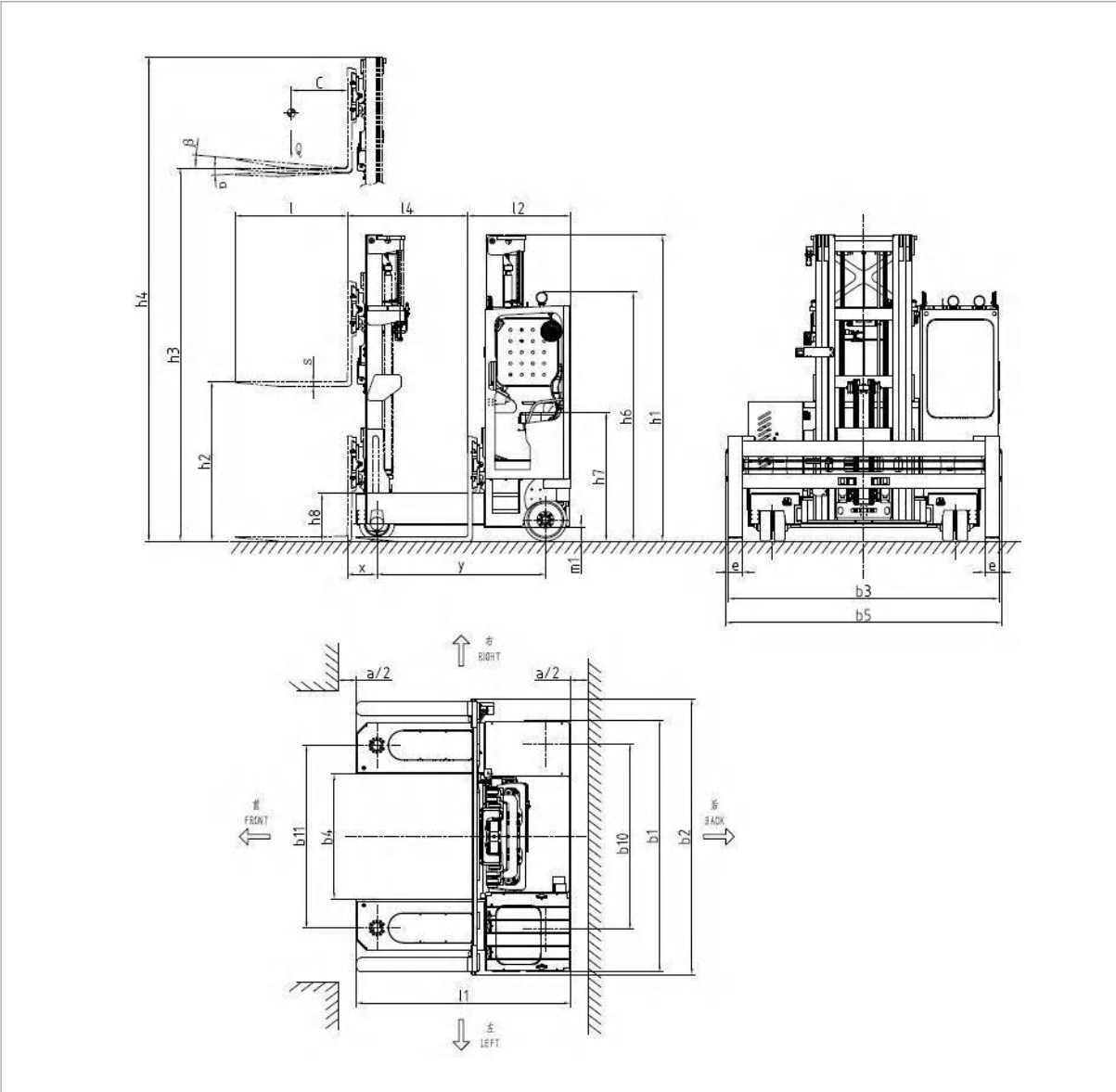


Load Chart

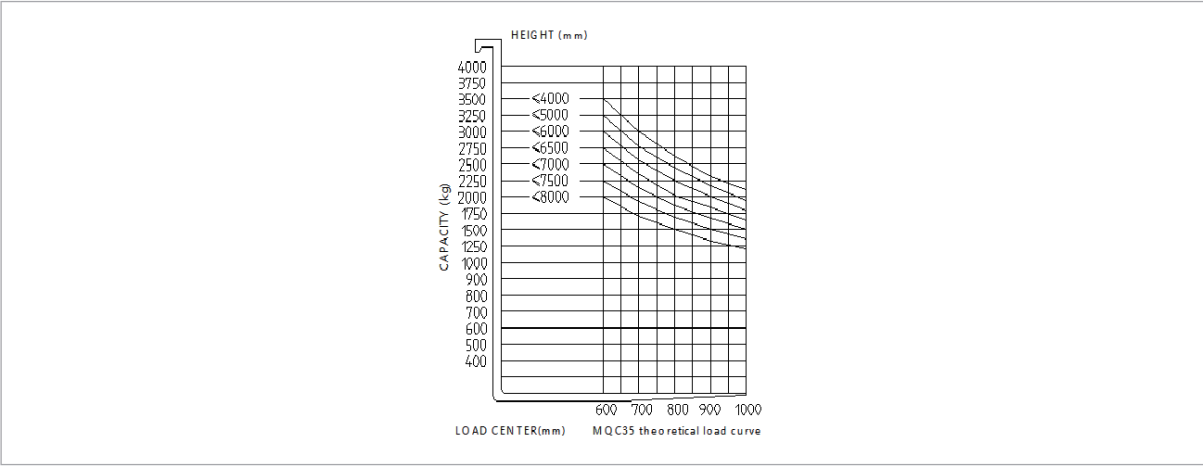


| Standard | | | |
|----------|----------------------------------------------------|----------------|-------------------|
| 1.1 | Brand | | MIMA |
| 1.2 | Model | | MQC35 |
| 1.3 | Nameplate | | MQC |
| 1.4 | Power type | | Battery |
| 1.5 | Operation type | | Seated |
| 1.6 | Rated capacity | Q (kg) | 3500 |
| 1.7 | Load center | c (mm) | 600 |
| 1.8 | Front overhand | x (mm) | 325 |
| 1.9 | Wheelbase | y (mm) | 1800 |
| Weight | | | |
| 2.1 | Service weight (with battery) | kg | 6370① |
| Wheel | | | |
| 3.1 | Wheel type | | Solid rubber tyre |
| 3.2 | Load wheel size | | 14×5/φ356×127 |
| 3.3 | Driving wheel size | | 16×7/φ406×178 |
| 3.4 | Wheel number Front/Back(X=driven) | | 4/2X |
| 3.5 | Wheel tread,load | b11 (mm) | 1712 |
| 3.6 | Wheel tread,drive | b10 (mm) | 1760 |
| Size | | | |
| 4.1 | Mast/Fork tilt range,Front/Rear | α/β(°) | 2/4 |
| 4.2 | Height of mast closed | h1(mm) | 3043 |
| 4.3 | Free lifting height | h2(mm) | 1958 |
| 4.4 | Lifting height | h3(mm) | 6000 |
| 4.5 | Mast extended height | h4(mm) | 7135 |
| 4.6 | Cab overall height (with/without light) | h6(mm) | 2674/2574 |
| 4.7 | Seat height | h7(mm) | 1365 |
| 4.8 | Leg height | h8(mm) | 475 |
| 4.9 | Overall length | l1 (mm) | 2300 |
| 4.10 | Overall width | b1/b2 (mm) | 2435/2860 |
| 4.11 | Fork size | s / e / l (mm) | 50/150/1200 |
| 4.12 | Fork outside width | b5 (mm) | 560~2800 |
| 4.13 | Inner leg width | b4 (mm) | 1150 |
| 4.14 | Reach stroke | l4 (mm) | 1300 |
| 4.15 | Ground clearance, at the center of the wheelbase | m1 (mm) | 124 |
| Function | | | |
| 5.1 | Driving speed when going straight, (load/unload) | km/h | 7~8 |
| 5.2 | Driving speed when driving sideways, (load/unload) | km/h | 6~7 |
| 5.3 | Lifting speed (load/unload) | mm/s | 150/250 |
| 5.4 | lowering speed (load/unload) | mm/s | 195/160 |
| 5.5 | Brake type | | Electromagnetic |
| Drive | | | |
| 6.1 | Drive motor power (S2-60min) | kw | 8AC |
| 6.2 | Lift motor power (S3-15%) | kw | 15AC |
| 6.3 | Lead acid battery, voltage/capacity | V/Ah | 48/560 |
| 6.4 | Battery weight | kg | 910 |
| Other | | | |
| 7.1 | Battery change type | | Hoist |

2D View

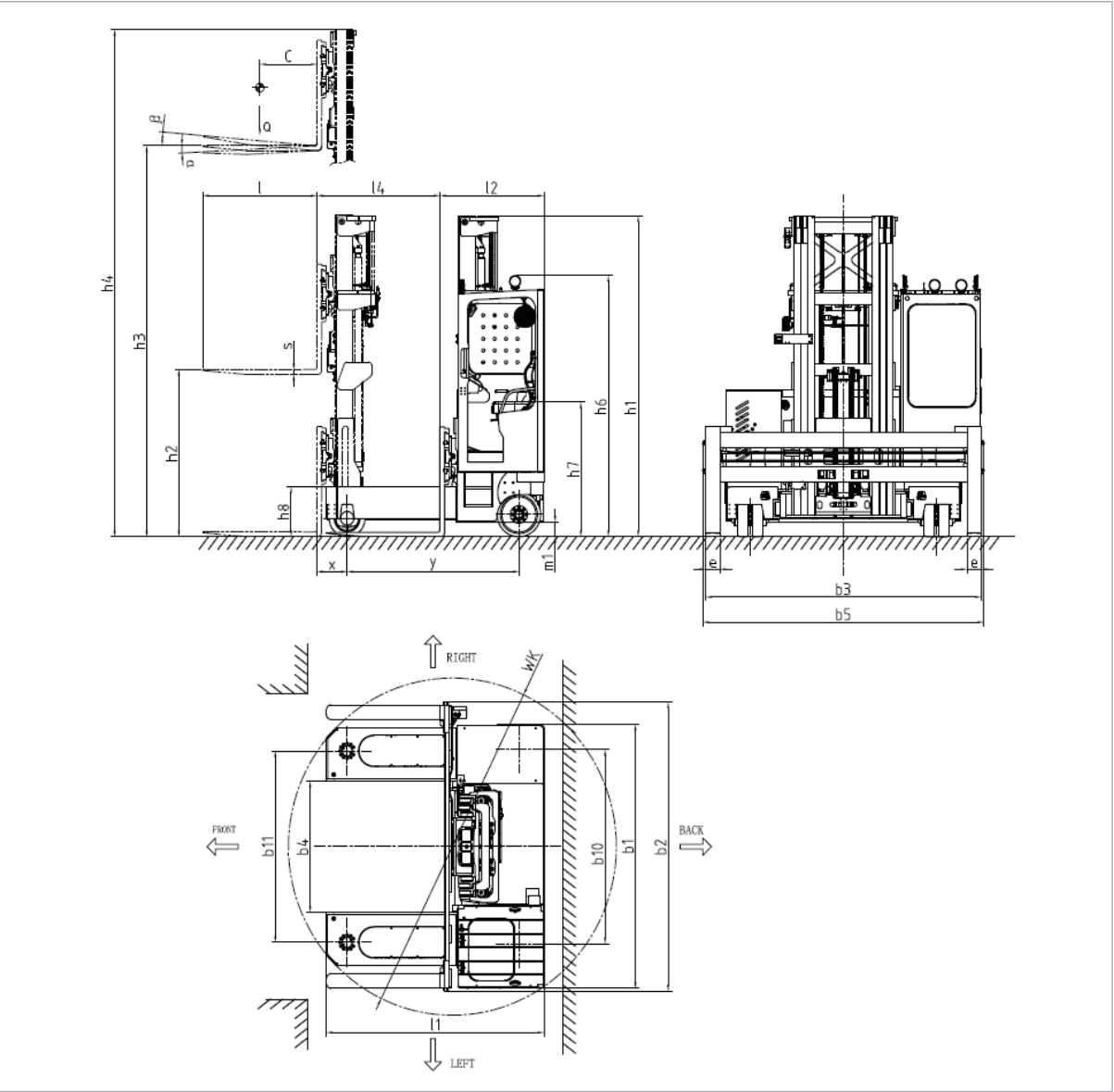


Load Chart

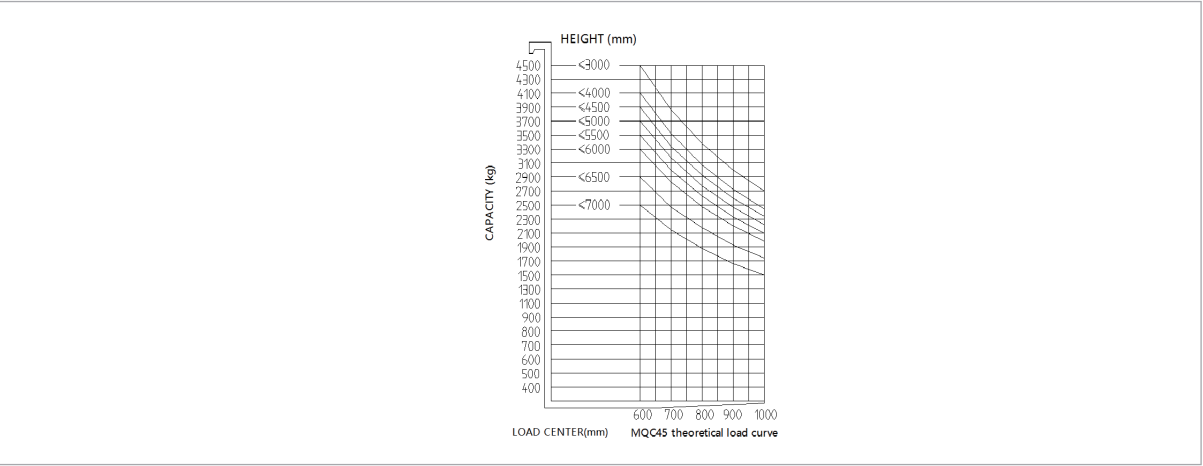


| Standard | | | |
|----------|-------------------------------------------------------------|----------------|----------------------|
| 1.1 | Brand | | MIMA |
| 1.2 | Model | | MQC45 |
| 1.3 | Power type | | Battery |
| 1.4 | Operation type | | Seated |
| 1.5 | Rated capacity | Q (kg) | 4500 |
| 1.6 | Load center | c (mm) | 600 |
| 1.7 | Front overhand | x (mm) | 330 |
| 1.8 | Wheelbase | y (mm) | 1800 |
| Weight | | | |
| 2.1 | Service weight (with battery) | kg | 7750 |
| 2.2 | Axle load at full load, drive side/load side | kg | 6620/5630 |
| 2.3 | Axle load with no load, drive side/load side | kg | 5820/1930 |
| Wheel | | | |
| 3.1 | Wheel type | | Solid rubber tyre |
| 3.2 | Load wheel size | | 15×5-11.25/φ381×127 |
| 3.3 | Driving wheel size | | 18×9-12.125/φ457×229 |
| 3.4 | Wheel number Front/Back(X=driven) | | 4/2X |
| 3.5 | Wheel tread,drive | b10 (mm) | 2050 |
| 3.6 | Wheel tread,load | b11 (mm) | 1964 |
| Size | | | |
| 4.1 | Mast/Fork tilt range,Front/Rear | α/β(°) | 2/4 |
| 4.2 | Overhead guard height | h6(mm) | 2680/2550 |
| 4.3 | Seat height | h7 (mm) | 1375 |
| 4.4 | Leg height | h8 (mm) | 500 |
| 4.5 | Overall length | l1 (mm) | 2300 |
| 4.6 | Length from tail to fork face | l2 (mm) | 1100 |
| 4.7 | Overall width | b1/b2 (mm) | 2680/2550 |
| 4.8 | Fork size | s / e / l (mm) | 50/150/1200 |
| 4.9 | Fork outside width | b5 (mm) | 560~2900 |
| 4.10 | Inner leg width | b4 (mm) | 1340 |
| 4.11 | Ground clearance, at the center of the wheelbase | m2 (mm) | 150 |
| 4.12 | Aisle width when running sideways 1000×6000mm cargo c=500mm | Ast (mm) | 2900 |
| 4.13 | Body to support leg length | l7 (mm) | 2300 |
| Function | | | |
| 5.1 | Side Driving speed, full/unladen | km/h | 7-8 |
| 5.2 | Straight Driving speed, full/unloaded | km/h | 6-7 |
| 5.3 | Climbing ability load/unload | % | 8/8 |
| 5.4 | Brake type | | Electromagnetic |
| Drive | | | |
| 6.1 | Drive motor power (S2-60min) | kw | 7AC |
| 6.2 | Lift motor power (S3-15%) | kw | 25.4AC |
| 6.3 | Lead acid battery, voltage/capacity | V/Ah | 80/500 |
| Other | | | |
| 7.1 | Drive control type | | AC |
| 7.2 | Driver's ear noise level | dB(A) | 75 |

2D View

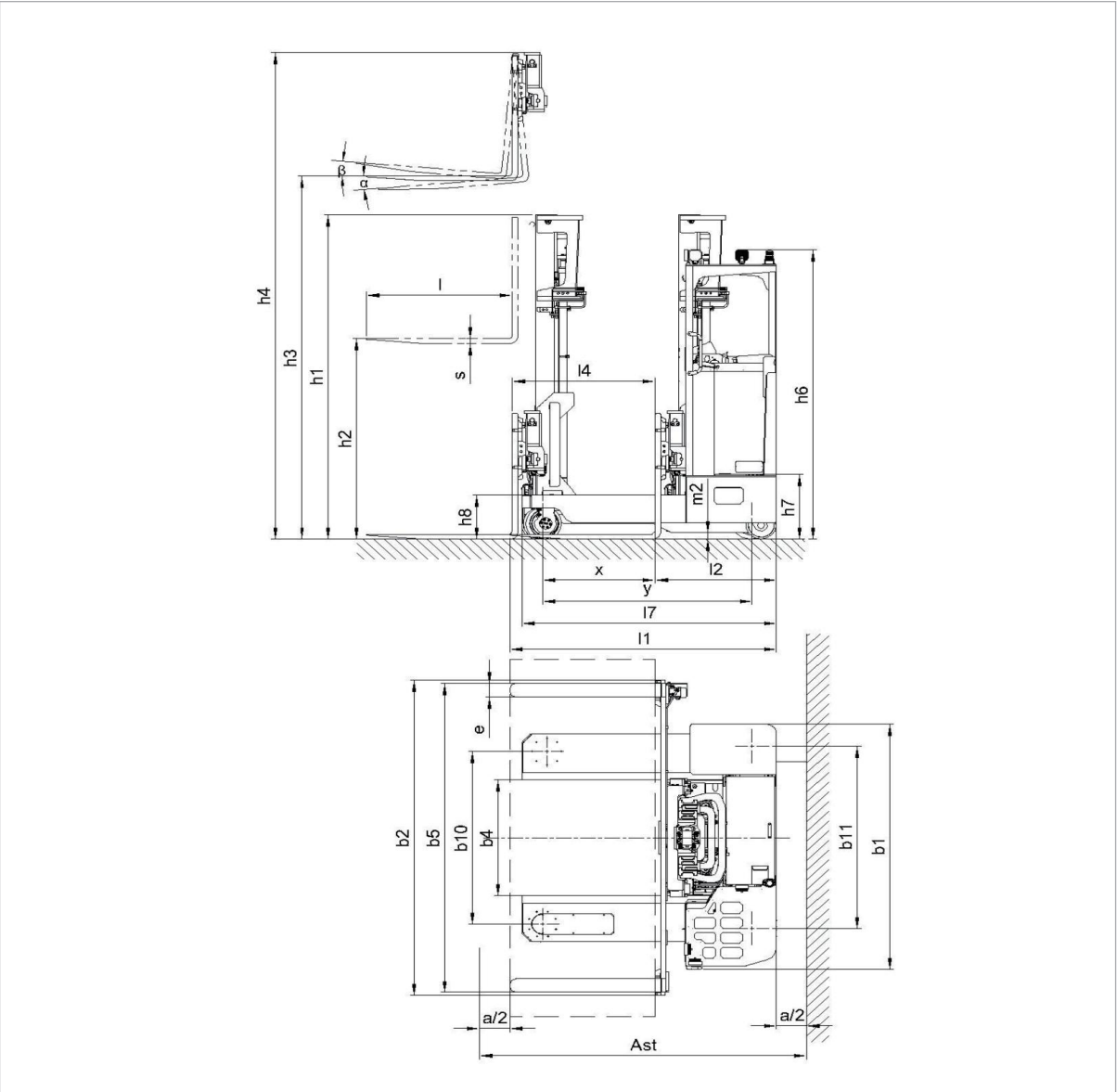


Load Chart

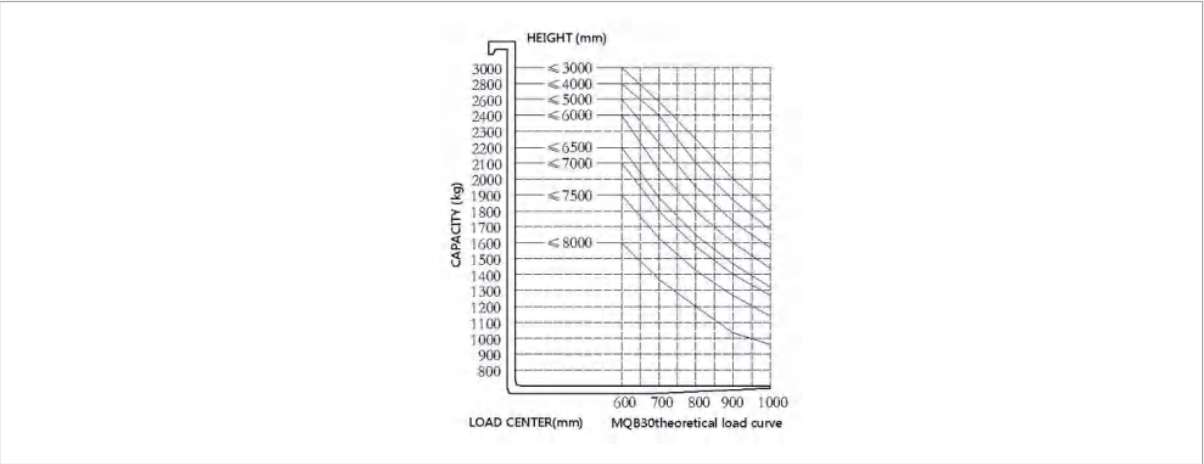


| Standard | | | |
|----------|-------------------------------------------------------------|----------------|----------------------|
| 1.1 | Brand | | MIMA |
| 1.2 | Model | | MQB30 |
| 1.3 | Nameplate | | TFC |
| 1.4 | Power type | | Battery |
| 1.5 | Operation type | | Seated |
| 1.6 | Rated capacity | Q (kg) | 3000 |
| 1.7 | Load center | c (mm) | 600 |
| 1.8 | Distance between front wheel and fork | x (mm) | 930 |
| 1.9 | Wheelbase | y (mm) | 1730 |
| Weight | | | |
| 2.1 | Service weight (with battery) | kg | 5950① |
| Wheel | | | |
| 3.1 | Wheel type,Front/Back | | PU/Solid rubber tyre |
| 3.2 | Load wheel size | mm | φ254×65/φ285×100 |
| 3.3 | Driving wheel size | mm | φ381×203 |
| 3.4 | Additional wheels | mm | φ254×65 |
| 3.5 | Wheel number Front/Back(X=driven) | | 2+2/1X+2 |
| 3.6 | Wheel tread,load | b10 (mm) | 1563 |
| 3.7 | Wheel tread,drive | b11 (mm) | 1650 |
| Size | | | |
| 4.1 | Mast/Fork tilt range,Front/Rear | α/β(°) | 2/5 |
| 4.2 | Height of mast closed | h1(mm) | 3107 |
| 4.3 | Free lifting height | h2(mm) | 1987 |
| 4.4 | Lifting height | h3(mm) | 6000 |
| 4.5 | Mast extended height | h4(mm) | 7152 |
| 4.6 | Overhead guard height | h6(mm) | 2625/2490 |
| 4.7 | Station height | h7(mm) | 585 |
| 4.8 | Leg height | h8(mm) | 400 |
| 4.9 | Overall length | l1 (mm) | 2200 |
| 4.10 | Length from tail to fork face | l2 (mm) | 1000 |
| 4.11 | Overall width | b1/b2 (mm) | 2225/2860 |
| 4.12 | Fork size | s / e / l (mm) | 50/125/1200 |
| 4.13 | Fork outside width | b5 (mm) | 560~2800 |
| 4.14 | Inner leg width | b4 (mm) | 1050 |
| 4.15 | Reach stroke | l4 (mm) | 1180 |
| 4.16 | Ground clearance, at the center of the wheelbase | m2 (mm) | 60 |
| 4.17 | Aisle width when running sideways 1200×6000mm cargo c=600mm | Ast (mm) | 2700 |
| 4.18 | Body to support leg length | l7 (mm) | 2100 |
| Function | | | |
| 5.1 | Driving speed when going straight, (load/unload) | km/h | 5/6 |
| 5.2 | Driving speed when driving sideways, (load/unload) | km/h | 7/8 |
| 5.3 | Lifting speed,(load/unload) | mm/s | 180/300 |
| 5.4 | Lowering speed, (load/unload) | mm/s | 300/220 |
| 5.5 | Climbing ability load/unload | % | 8/8 |
| 5.6 | Brake type | | Electromagnetic |
| Drive | | | |
| 6.1 | Drive motor power (S2-60min) | kw | 5.5 |
| 6.2 | Lift motor power (S3-15%) | kw | 12.8 |
| 6.3 | Lead acid battery, voltage/capacity | V/Ah | 48/500 |
| 6.4 | Battery weight | kg | 826 |
| Other | | | |
| 7.1 | Drive control type | | AC |
| 7.2 | Driver's ear noise level | dB(A) | 70 |

2D View



Load Chart



Standard

| | | | |
|-----|----------------|---------|------|
| 1.1 | Brand | MIMA | |
| 1.2 | Model | MQC30D | |
| 1.3 | Power type | Battery | |
| 1.4 | Operation type | Seated | |
| 1.5 | Rated capacity | Q (kg) | 3000 |
| 1.6 | Load center | c (mm) | 600 |
| 1.7 | Front overhand | x (mm) | 312 |
| 1.8 | Wheelbase | y (mm) | 1895 |

Weight

| | | | |
|-----|---------------------------------|----|-----------|
| 2.1 | Service weight (with battery) | kg | 5580 |
| 2.2 | Alex loading,laden drive/load | kg | 4680/3970 |
| 2.3 | Alex loading,unladen drive/load | kg | 3960/2590 |

Wheel

| | | | |
|-----|-----------------------------------|-------------------|-------------------|
| 3.1 | Wheel type,drive/load | Solid rubber tyre | Solid rubber tyre |
| 3.2 | Load wheel size | mm | φ405×220 |
| 3.3 | Driving wheel size | mm | φ457×229 |
| 3.4 | Wheel number Front/Back(X=driven) | | 2 / 1X |
| 3.5 | Wheel tread,drive | b10 (mm) | 0 |
| 3.6 | Wheel tread,load | b11 (mm) | 1776 |

Size

| | | | |
|------|-------------------------------------|------------|-------------|
| 4.1 | Mast/Fork tilt range,Front/Rear | α/β(°) | 2/5 |
| 4.2 | Height of mast closed | h1(mm) | 3020 |
| 4.3 | Free lifting height | h2(mm) | 1884 |
| 4.4 | Lifting height | h3(mm) | 5500 |
| 4.5 | Mast extended height | h4(mm) | 6650 |
| 4.6 | Cab height (with lights) | h6(mm) | 2571 |
| 4.7 | Seat height | h7(mm) | 1310 |
| 4.8 | Leg height | h8(mm) | 530 |
| 4.9 | Overall length(without guide wheel) | L1(mm) | 2330 |
| 4.10 | Length from tail to fork face | l2 (mm) | 1000 |
| 4.11 | Overall width | b1/b2 (mm) | 2300/2860 |
| 4.12 | Fork size | l/e/s(mm) | 1200/125/50 |
| 4.13 | Fork carriage width | b5(mm) | 2860 |
| 4.14 | Fork outside width | b3(mm) | 560~2800 |
| 4.15 | Inner leg width | b4(mm) | 1200 |
| 4.16 | Reach stroke | l4(mm) | 1300 |
| 4.17 | Ground clearance(without camera) | ml(mm) | 150 |

Function

| | | | |
|-----|----------------------------------------------------------|----------|-----------------|
| 5.1 | Driving speed when going sideways, (load/unload) | km/h | 7.0/9.0 |
| 5.2 | Driving speed when driving straight, (load/unload) | km/h | 5.0/6.0 |
| 5.3 | Lifting speed,(load/unload) | mm/s | 180/300 |
| 5.4 | Lowering speed, (load/unload) | mm/s | 300/220 |
| 5.5 | Straight driving Max. gradeability(load/unload)(S2-5min) | %(tanθ) | 8/10 |
| 5.6 | Side driving Max. gradeability(load/unload)(S2-5min) | %(tanθ) | 8/10 |
| 5.5 | Brake type(front/rear) | | Electromagnetic |

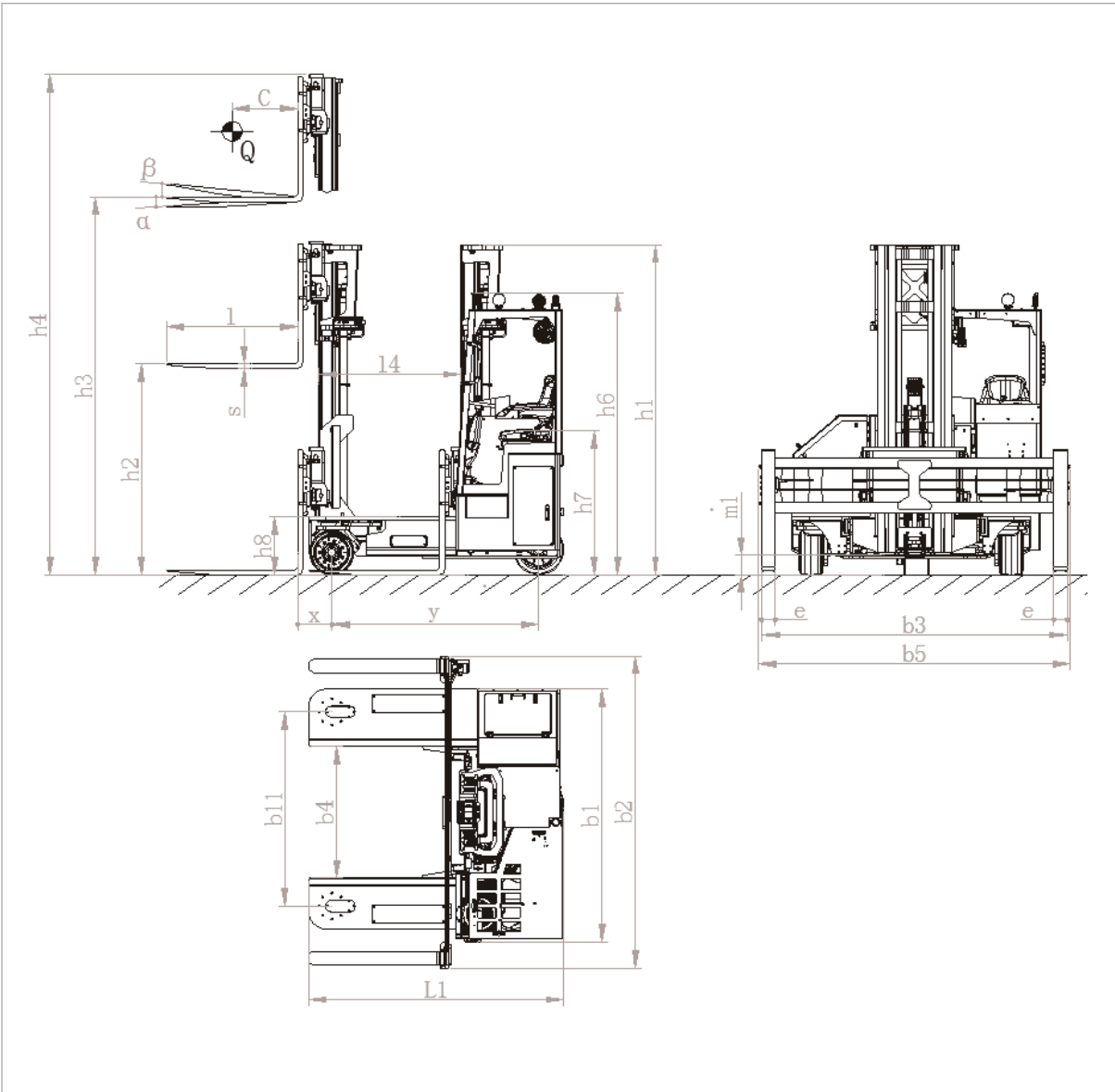
Drive

| | | | |
|-----|-------------------------------------|------|--------|
| 6.1 | Drive motor power (S2-60min) | kw | 9.1AC |
| 6.2 | Lift motor power (S3-15%) | kw | 12.8AC |
| 6.3 | Lead acid battery, voltage/capacity | V/Ah | 48/560 |
| 6.4 | Battery weight | kg | 900 |

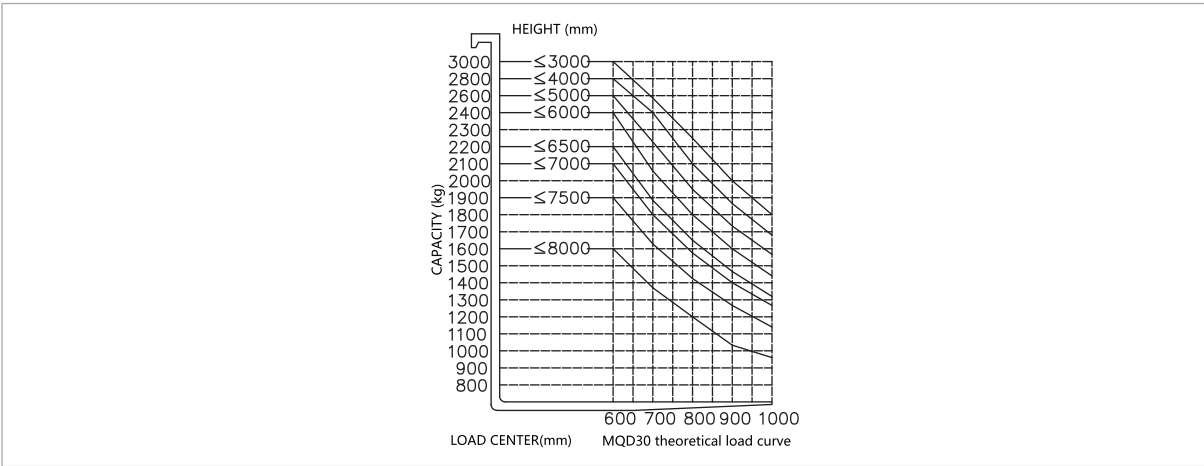
Other

| | | | |
|-----|---------------------|--|-----------------|
| 7.1 | Battery replacement | | Hosit/Side pull |
|-----|---------------------|--|-----------------|

2D View



Load Chart





COMPANY INTRODUCTION

Hefei Banyitong Technology Development Co., Ltd., founded in 1994, is a high-tech enterprise specializing in the design and manufacture of electric storage forklifts and customized logistics equipment. Our company has won the People's Republic of China special equipment production license, ISO9001:2008, CE certification and so on.

With more than 20 years of continuous improvement, MIMA brand is based on the company's strong scientific research and innovation team, with the design concept of "safety, durability, comfort, low carbon (environmental protection)", to provide customers with 500KG-100T application solutions, storage equipment and related services. Through continuous technological innovation and accumulation of patents, our products have involved more than 50 varieties in 12 categories, such as electric pallet trucks, pallet stackers, reach trucks, counterbalanced forklifts, tow tractor, low-level and high-level order picker, VNA three-way forklifts, four-way and multi-directional forklifts, AGV forklift, unmanned aisle stackers and customized logistics equipment. MIMA brand products are widely used in medicine, food, chemical, electronics, machinery, furniture, logistics and other industries.

In order to serve users better and more comprehensively, our company has established a sales and service system that integrates consulting, planning and design, and comprehensive services. Now we have established offices directly

under the company and 68 agents and distribution service providers across the country. And set up professional sales service network and dealers in more than 60 overseas countries and regions. The broad marketing network and perfect pre-sale, in-sale and after-sale service system ensure that you can get the machine and the service from us.

MIMA promise of "Even if there is only one piece of equipment in the world, we will custom made it for you" has always been a work guide for employees. After more than 20 years of struggle, we have successfully provided various customized forklift logistics equipment solutions to various customers in different industries, which have been highly praised and recognized by our customers.

"Safety, quality, innovation, service" has been the consistent business philosophy of MIMA brand for more than 20 years. The industry prospect of "Min spac. And Max performance" is the driving force for the unremitting efforts and hard work of all MIMA employees. In the future, MIMA will stand in the east of the world with a more proud posture, and present it to customers with a more excellent design concept and comprehensive service system, so that customers can cooperate once and become friends for life!

Honor and Qualification

