



VEHICLES CEDSTUNT

POLARIS RANGER 6X6



POLARIS®



TERRAIN

The Polaris ranger 6x6 tracking vehicle is a must, as it's the best option for any camera grip. With a huge loading capacity, it can carry a MiniJib arm and become a nice alternative to the Russian arm. 2 / 4 or 6 wheel drive give the ranger a very good balance while swinging the arm and avoid most of the vibration when using a stabilize head. The ranger is very modifiable with a side platform, front platform, 2 extra seats, pipes to scaffold the vehicle anyway.

MAX LOAD

Depending on the grip system used, the ranger will generally carry 5 persons maximum, including the driver. It gives the opportunity to have 2 cameras on board, for example one used with the minijibarm, while the 2nd one can be fixed on a black arm or hand held.



POLARIS RANGER 6 WHEELERS + ALPHA JIB ARM + MOVI XL

With its huge loading capacities, the Polaris 6 wheelers pursuit vehicle often goes with the alpha jib crane mounted with Movi xl stabilized head :

The α -Jib is a very modurable manual crane, it has proved itself to be an extremely versatile and time efficient piece of equipment, capable of adapting from large stage work to very confined sets. With lengths ranging from 3'10" to 14'6" and heights from below floor level to 14'7".

- Lightweight, Durable construction
- Fast easy Set-up in all configurations
- Alpha Jib is currently safely rigged on the bucket of the dodge ram camera car.
- Affordable for all productions

RECOMMENDED WITH MOVI XL

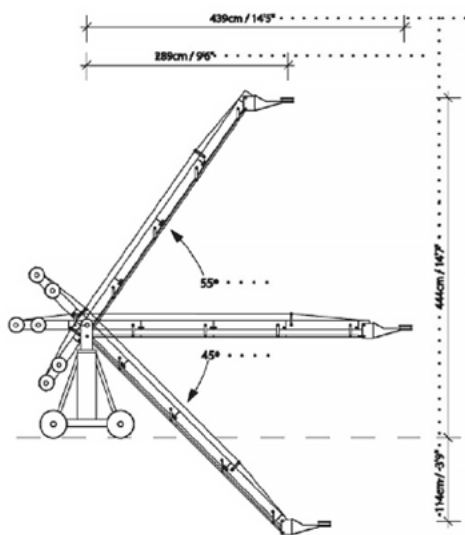
DIMENSIONS : 664 x 507 x 700mm (L*W*H)

CAMERA CAGE : 399 x 255 x 289mm (L*W*H)

WEIGHT : 24,25Lbs / 11kg

COMPATIBLE CAMERA : Red Epic, Red Dragon, Red Weapon, ARRI Alexa XT, ARRI Alexa 65, Sony F5, Sony F55, PHANTOM Flex 4K

More specs on www.freeflysystems.com



α-JIB



POLARIS 6 WHEELERS + BLACK ARM

The Black arm is a 3-axis dampening system with a additional vibration mount for stabilizing roll and tilt errors as well as vertical motion and vibrations. The Black arm is a hardmount system, made for gimbals, that you want to mount on vehicles such as cars, ATVs, boats, snowmobiles.



INTERCOM

The Portacom COM-40FC is a complete wired intercom system that serves the production communication needs of video and film, broadcast sporting events, cable access television, houses of worship, and educational institutions.



OPERATED STABILIZED HEAD FROM A SUPPORT VEHICLE

Wirelessly supported by all freely products, this controller will have the option to adjust camera settings on the fly, adjust focus iris and zoom, while being able to control the head of movie XL. Fully integrated system powered by V lock and wireless downlinks to small HD

