

**LONE STAR T'S**  
**OKLAHOMA REVISITED -- 2006 SPRING TOUR**  
**Friday, May 5 – Sunday, May 7**

**Leave 9:00 from City Hall parking lot in The Colony, North Colony Blvd. at FM 423 (Main Street)**

**Tour notes-**

**Use 2 or even 3 lanes going through stoplights where permitted**

**Space out on 2 lane roads with no shoulder - let moderns pass**

**Keep car behind you in sight - especially at poorly marked turns**

**Sodas and water are available on trouble truck at rest stops**

<i><b>The Colony to Lake Texoma Resort Park</b></i>
---

<u>Cumm Mileage</u>	<u>Interval Mileage</u>	
0.0	0.0	Follow leader to exit City Hall parking lot to the northwest by Blockbuster
0.1	0.1	RT on Main Street - FM423
4.9	4.8	RT at Y intersection with stop light following FM 423 north
8.7	3.8	Cross Highway 380 continuing north. FM 423 becomes Gee Rd. as you cross Highway 380
9.3	0.6	LFT on Fishtrap Rd.
10.3	1.0	RT at stop sign - This is FM 1385, but is not marked
14.8	4.5	LFT on FR 428 going towards Aubrey
20.1	5.3	Cross US 377 in Aubrey at stop light
20.8	0.7	LFT at stop sign on North Sherman Street in Aubrey - N. Sherman St. continues as FM 428 as you leave town
25.2	4.4	RT on FR 2153 at end of curve - you'll see a sign saying "Cemetery"
29.2	4.0	RT on Running Bear Rd.
29.4	0.2	RT at T next to "the Dam Store" - you'll be on FM 455, but not marked here
32.9	3.5	Note - if the lake overlook is open, we will drive up to the overlook to view. Otherwise, continue on FM 455 until the turn onto Merrill Road below
33.9	1.0	(Leaving the overlook park, turn LFT back onto FM 455)

**LONE STAR T'S**  
**OKLAHOMA REVISITED -- 2006 SPRING TOUR**  
**Friday, May 5 – Sunday, May 7**

<b><u>Cumm Mileage</u></b>	<b><u>Interval Mileage</u></b>	
34.6	0.7	LFT on Merrill Rd.
38.0	3.4	LFT on Highway 377 at T - Highway not marked at this intersection
38.5	0.5	LFT on Massey Rd
39.9	1.4	RT on Georgia Ave. in Pilot Point
40.1	0.2	LFT on McFarland
40.3	0.2	RT at T - street not marked here (Stop Sign)
40.4	0.1	LFT on S. Morrison (Stop Sign)
40.5	0.1	RT on W. Grove
40.7	0.2	LFT on Washington (Bus 377) in Pilot Point (Stop Sign)
40.9	0.2	RT on FR 1192
41.0	0.1	LFT following FR 1192
41.1	0.1	RT following FR 1192 - continue north on Bus 377
42.8	1.7	LFT on Highway 377 going north

If we have not already had our rest stop at the lake overlook, we'll pull into the Exxon station at the Bus 377/Hwy 377 intersection for a break and gas. When ready to leave station, turn left onto Highway 377 heading north.

53.7	10.9	RT on Hog Town Rd
53.8	0.1	LFT on Snow Rd
54.6	0.8	RT at T - road not marked here
54.7	0.1	LFT on Jones Rd
55.7	1.0	LFT on Spring Creek Rd
56.2	0.5	Spring Creek Rd becomes Broadway in Collinsville
56.5	0.3	Continue ahead on Broadway at stop sign going past school
57.1	0.6	RT on Joggers Trl

**LONE STAR T'S**  
**OKLAHOMA REVISITED -- 2006 SPRING TOUR**  
**Friday, May 5 – Sunday, May 7**

<b><u>Cumm Mileage</u></b>	<b><u>Interval Mileage</u></b>	
59.8	2.7	LFT at Y – you are now on Old Center Church Rd
60.5	0.7	Cross Highway 377 staying on Old Center Church Rd
60.8	0.3	RT at T intersection - you'll be going north on Bus 377, but not marked here

Entering Whitesboro - we'll be taking a break in Whitesboro. If you need a restroom, we suggest using the facilities at City Hall, located at the northwest corner of BR 377 and Highway 56. If you'd like to explore the downtown stores in Whitesboro, turn right on Highway 56 and park in downtown area. Lady passengers may want to shop the down-town area while men and cars go on to old car auto shop, which will be about 2 blocks to the east.

64.0	3.2	RT on Highway 56 (Light)
64.3	0.3	LFT on Virginia
64.8	0.5	RT on North Ave.
64.9	0.1	RT on Trollinger St. Park along Trollinger.

The classic auto shop is just to your left facing Highway 56. If you need gas, there is a station to the west of the downtown area. We will take about a 20 minute break for visiting the auto shop and for any downtown shopping. When we leave, we will head west on Highway 56 and you may pick up any downtown passengers as we drive back through the downtown area.

64.9	0.0	RT onto Highway 56 leaving shop
65.3	0.4	Continue straight ahead on Highway 56 at light. Go under Highway 82.
66.3	1.0	RT at T on Highway 82 access road.
66.8	0.5	LFT on unmarked road - this is Hughes Rd, but not marked
67.1	0.3	LFT at T - this is Roland Rd
68.6	1.5	Cross Bones Chapel Rd, going straight ahead (Stop Sign)
71.1	2.5	RT at green roofed buildings - road becomes Chisum Trl.
72.7	1.6	LFT on Highway 377 at T

**LONE STAR T'S**  
**OKLAHOMA REVISITED -- 2006 SPRING TOUR**  
**Friday, May 5 – Sunday, May 7**

<b><u>Cumm Mileage</u></b>	<b><u>Interval Mileage</u></b>	
74.7	2.0	LFT into Catfish Haven restaurant for lunch break Lunch is "on your own" - gather in parking lot when ready to leave
74.7	0.0	LFT onto Highway 377 as we leave the restaurant
76.2	1.5	RT on Sandusky Rd
77.2	1.0	RT on Hickory Creek Dr
77.5	0.3	LFT on Freeman Rd at Y
77.9	0.4	LFT on Green Rd
80.1	2.2	RT at T into Gordonville - this is Highway 901, but not marked
80.5	0.4	LFT on Gordonville RD
82.8	2.3	RT onto Highway 377 going north - watch and YIELD at intersection
85.5	2.7	Welcome to Oklahoma as we cross the bridge
89.3	3.8	Keep Left on Shay at Stop sign.
90.8	1.5	RT on Shay Cutoff Rd
94.9	4.1	LFT on Enos Rd
98.9	4.0	RT on Highway 32 going east (there is no shoulder here - space out) (Stop Sign)
101.0	2.1	At junction with US 70, continue east on US 70 observing YIELD
105.8	4.8	RT into park entrance
106.2	0.4	LFT into lodge parking lot - park near front door to register and unload, then park in designated area

**Hotel has elevator in lobby to reach upper floors. Dinner tonight is "on your own"**

**Hospitality room will be set up in Dave Rosenow's room on 2nd floor, near the elevator (probably either room 223 or 225 - visit there if you'd like before going out to eat -- thank you to Shirley Cain, Alice Richter and Judy Peterson for providing treats.**

**LONE STAR T'S**  
**OKLAHOMA REVISITED -- 2006 SPRING TOUR**  
**Friday, May 5 – Sunday, May 7**

<b><i>Texoma Resort to Tishomingo and Return</i></b>
--

<b><u>Cumm Mileage</u></b>	<b><u>Interval Mileage</u></b>	
0.0	0.0	Follow the leader RT from parking lot
0.1	0.1	LFT at airport
2.2	2.1	RT on McDuffee (Stop Sign)
3.4	1.2	RT on US 70A (Stop Sign)
7.0	3.6	LFT on US 70 (Stop Sign)
14.1	7.1	Straight ahead at Truck Route Follow Hwy 99 East
14.5	0.4	RT on Hwy 99
15.0	0.5	LFT on Hwy 99 Junction Hwy 99 & 199
26.4	11.4	RT @ Y Hwy 99/377 north
<b>TISHOMINGO</b>		
27.6	1.2	LFT on North Capitol (Before new county court house)
27.6	0.1	LFT at Old Capitol
27.7	0.1	RT on Mickle St
27.7	0.0	RT on W. 8th St
<b>PARK AT REAR OF BUILDING</b>		
<b>OUR CHICKASAW TRIBAL MUSEUM AND CHICKASAW CAPITAL BUILDING</b>		
27.7	0.0	Exit Parking west on W. 8th St
27.8	0.1	LFT on Mickle St
27.8	0.0	LT at Old Capital
		RT on North Capital

**LONE STAR T'S**  
**OKLAHOMA REVISITED -- 2006 SPRING TOUR**  
**Friday, May 5 – Sunday, May 7**

<b><u>Cumm</u></b> <b><u>Mileage</u></b>	<b><u>Interval</u></b> <b><u>Mileage</u></b>
---	---

27.9	0.1	Cross Main St to Pennington Park. Circle Park and return to Main Street
------	-----	---

29.0	1.1	RT on Main St
------	-----	---------------

PARK ON BOTH SIDES MAIN STREET LUNCH AT 11:30 AM at the BANK MUSEUM

LUNCH AT BANK MUSEUM AT 11:00 A M

REGROUP AT 1:30 P M ON MAIN ST HEADING EAST

29.0	0.0	East on Main St
------	-----	-----------------

30.2	1.2	RT on Refuge Rd
------	-----	-----------------

We will circle through the Tishomingo Wildlife Refuge area. There are many solid concrete structures that remain from the 1920-1940 days of the Washita Farm/Chapman Farm era. His farm operated as a tenant farm system and was a haven during the depression for over 80 families who lived and worked at the farm. The Refuge Headquarters building was the maintenance building for the farm

38.8	8.6	RT on East Main (Hwy 99/377)
------	-----	------------------------------

40.3	1.5	RT on Hwy 22
------	-----	--------------

53.5	13.2	RT on Hwy 78 south at Nida
------	------	----------------------------

56.5	3.0	RT on Hwy 199 west
------	-----	--------------------

59.8	3.3	RT at Fort Washita
------	-----	--------------------

REST ROOMS AT REAR OF PARK

Visit museum and regroup to leave in 30 minutes

Fort Washita was established in 1842 as the then-south-western most post in the United States. (Beyond the borders to the south and west was the Republic of Texas which had recently won its independence from Mexico.) The purpose of the post was to protect the Chickasaw and Choctaw Indians from the plains Indians. On April 16, 1861, the fort was abandoned by U.S. forces under the command of Col. William Emory. The next day Fort Washita was occupied by Confederate forces and used during the War Between the States

64.3	3.3	RT on Hwy 78
------	-----	--------------

65.3	1.0	RT on Silo Rd
------	-----	---------------

71.8	6.5	RT on Hwy 70 west
------	-----	-------------------

**LONE STAR T'S**  
**OKLAHOMA REVISITED -- 2006 SPRING TOUR**  
**Friday, May 5 – Sunday, May 7**

**Cumm**  
**Mileage**

**Interval**  
**Mileage**

81.5

9.7

LFT at Lake Texoma Resort

**Dinner – 7:00 PM in the Fairway Room at Lake Texoma Lodge**

**LONE STAR T'S**  
**OKLAHOMA REVISITED -- 2006 SPRING TOUR**  
**Friday, May 5 – Sunday, May 7**

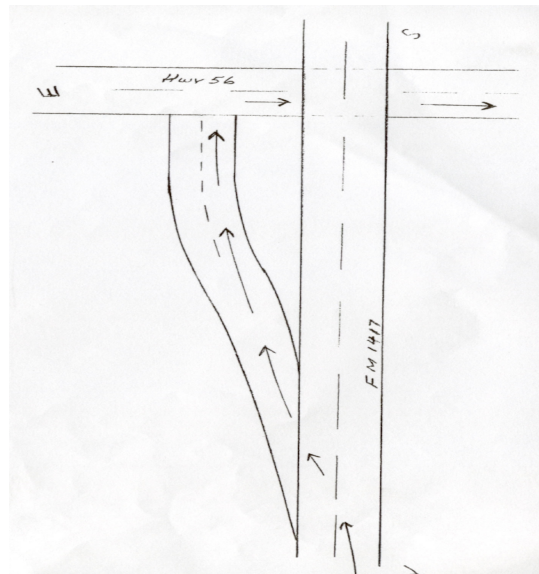
***Lake Texoma Resort Park to Texas and Home***

<b><u>Cumm Mileage</u></b>	<b><u>Interval Mileage</u></b>	
0.0	0.0	Follow the leader RT from parking lot
0.1	0.1	RT on US 70 east
7.6	7.5	RT on Leavenworth Rd south
13.5	5.9	RT on Platter Rd
15.5	2.0	LFT on Platter Dike Rd Becomes Sand Creek Rd
17.8	2.3	RT on Vernon Rd
18.8	1.0	LFT at 'T' Willifa Woods Rd
20.7	1.9	LFT on Boat Club Rd T intersection
20.8	0.1	RT on Windys Dr
21.0	0.2	Yield and enter Hwy 91 over the dam
23.3	2.3	RT on Hwy 1310 Eisenhower Park
25.3	2.0	RT into park entrance
Follow leader through the park. We will circle through the park and leave by the same gate as we entered.		
30.9	5.6	RT on Eisenhower RD
32.0	1.1	RT on Eisenhower Rd
32.3	0.3	LFT on Hwy 84
32.4	0.1	RT on FM 406
33.5	1.1	LFT on Preston Rd
35.8	2.3	Cross Hwy 120 on Preston Rd
40.4	4.6	Cross Hwy 691 Preston Becomes HWY 131



**LONE STAR T'S**  
**OKLAHOMA REVISITED -- 2006 SPRING TOUR**  
**Friday, May 5 – Sunday, May 7**

<u>Cumm Mileage</u>	<u>Interval Mileage</u>	
42.6	2.2	LFT on US 82 east
43.3	0.7	Follow US 82 service road to Golden Corral
		<b>May want to gas up before we leave. 34 miles before next gas stop</b>
43.4	0.1	Exit Golden Corral parking lot onto Loy Lake Road North
43.5	0.1	LFT on Buck Owens Freeway US 82 service rd. west Cross under US 75
44.1	0.6	Enter US 82 west
45.5	1.4	LFT on FM 1417 south
48.3	2.8	West on Hwy 56 <b>BAD INTERSECTION</b> Exit <u>left</u> across oncoming traffic. <b>Be careful !!</b>



51.5	3.2	LFT on Hwy 289 south
77.2	25.7	PROSPER Gas stop at Exxon Station
		<b>Eldorado Pkwy</b>
82.3	5.1	<b>RT to The Colony</b>

**LONE STAR T'S**  
**OKLAHOMA REVISITED -- 2006 SPRING TOUR**  
**Friday, May 5 – Sunday, May 7**

<b><u>Cumm Mileage</u></b>	<b><u>Interval Mileage</u></b>	<b>or Continue south 1.6 Miles to Main Street then LFT to Coit Rd &amp; Plano/Richardson</b>
87.1	4.8	LFT on FM 423
87.9	0.8	LFT on FM 423
92.7	4.8	LFT on N. Colony Blvd
92.7	0.0	LFT into city hall parking lot

**Have A Safe Trip Home**