



Flower Show Work Shop

Suzanne Quinn

4/30/2022



Introduction

The objective of this workshop is to better prepare you to participate in a flower show, whether entering the various categories or being a volunteer

- Additional information can be found in the Handbook for Flower Shows – (link on [District-One-Flower-Shows \(sigardenclubs.org\)](https://sigardenclubs.org) on the District Flower Show page)

Agenda

What Is A Flower Show

Trifold & Awards – Explained

Horticulture & Design

Education & Botanical Arts





“The way to get started is to quit talking and begin doing.”

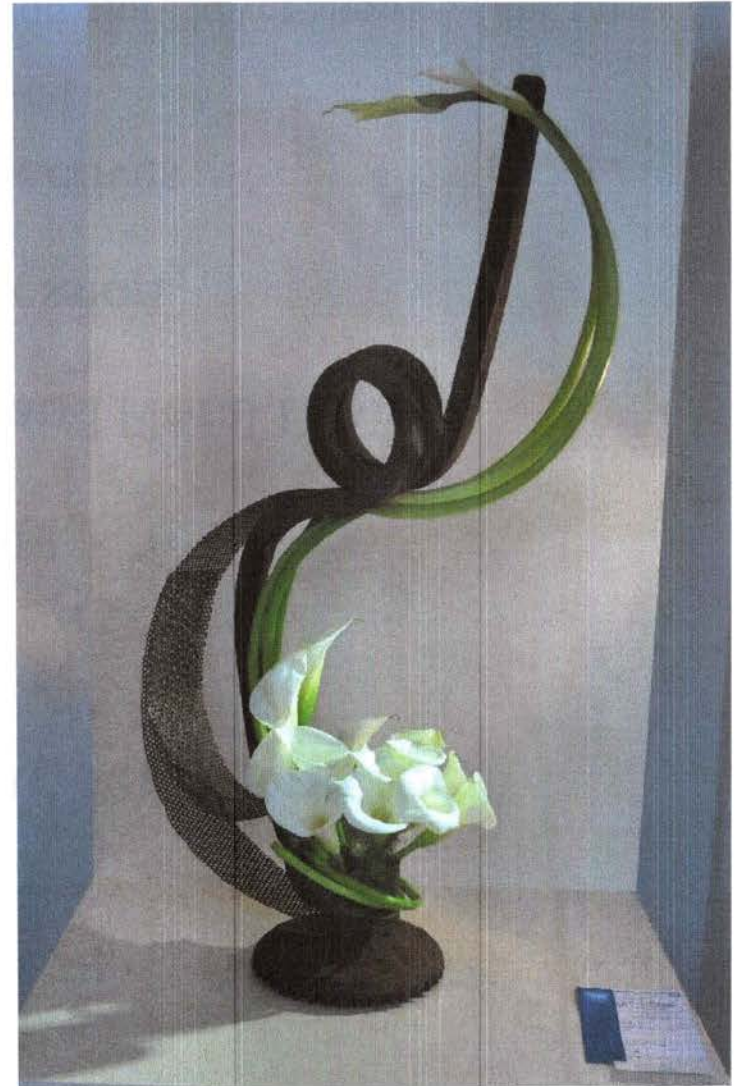
Walt Disney



4/30/2022



What Is A Flower Show?

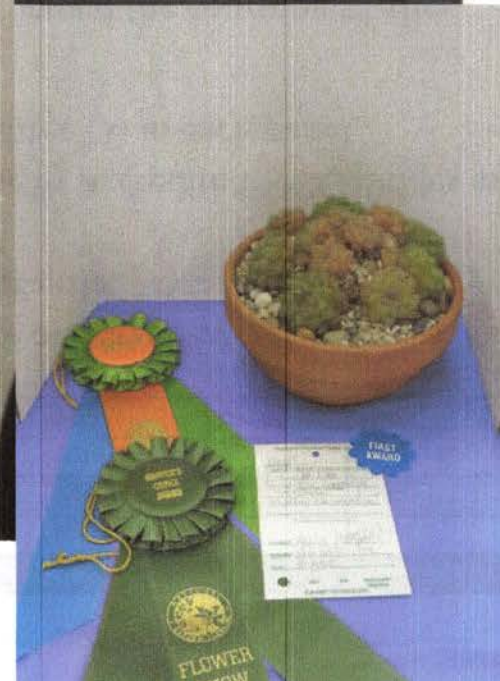


A Flower Show is:

- ♦ An Event where Garden Club Members bring their Horticultural and Design entries:
 - ♦ To educate club members and the public
 - ♦ To stimulate interest in Horticulture and Floral Design
 - ♦ To provide an outlet for creative expression
 - ♦ To communicate NGC goals and Objectives
- ♦ Additional information can be found in the Handbook for Flower Shows – (link on [District-One-Flower-Shows \(sigardenclubs.org\)](https://sigardenclubs.org) on the District Flower Show page)

Trifold & Awards Explained

Jo-Anne Schiffner
Lynne McNamara



Trifold

Jo-Anne Schiffner

- Model Trifold used from previous Flower shows.
- Chairs of the Show use as a guide to come up with the Theme for the Show and then the various names for all the categories to align with the theme.
- Horticulture Division is for the most part, almost the same each show except that depending on when the Show is, must make sure flowers will be available for that time of year!
- Design sections change from the previous Shows.
- Same goes for the Table Designs and Petites. Also for the Botanical Arts – Artistic Crafts and Botanical Arts – Photography (if included).
- Education section is basically the same and has to do with what is chosen from the theme of the Show.

4/30/2022

Awards

Lynne McNamara

- System of awarding:

Placing	Ribbon	Point Value
First	Blue	90+
Second	Red	85+
Third	Yellow	80+
Honorable Mention	White	75+

- Judges evaluate and score each entry to determine appropriate award
- Judging is done by accredited NGC judges and a minimum of three (3) in each panel
- Judging is performed the morning of the Flower Show



Horticulture



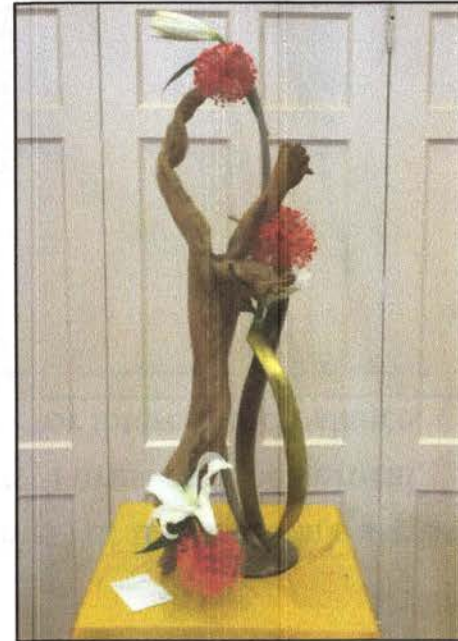
Design

Design

Review of the specific Design categories for the 2022 Flower Show
Peggy Cullimore-Klein

Creative

- These designs are not bound by traditional patterns or styles. They are designs with a relationship between form and space. Eclectic in approach, borrowing from different styles and periods to create new concepts and forms. Shows restraint in the amount of plant material and number of components used.



- Additional information can be found in the Handbook for Flower Shows - Chapter 7 (link on [District-One-Flower-Shows \(sigardenclubs.org\)](https://sigardenclubs.org) on the District Flower Show page)

Design

Review of the specific Design categories for the 2022 Flower Show

Peggy Cullimore-Klein

Spatial Thrust

- A Spatial Thrust Design is one in which two parallel placements (lines) of like materials are used to define a volume of vacant space, creating a feeling of thrust. Thrust may be vertical, horizontal or diagonal. ...one line may be longer than the other for interest and balance.



- Additional information can be found in the Handbook for Flower Shows - Chapter 7 (link on [District-One-Flower-Shows \(sigardenclubs.org\)](http://District-One-Flower-Shows.sigardenclubs.org) on the District Flower Show page)

Design

Review of the specific Design categories for the 2022 Flower Show

Peggy Cullimore-Klein

Cascade

- A line design that includes a slightly curvilinear line that falls or hangs from a container; a bouquet design style that is elongated in an oval or egg shape.



- Additional information can be found in the Handbook for Flower Shows - Chapter 7 (link on [District-One-Flower-Shows \(sigardenclubs.org\)](http://sigardenclubs.org) on the District Flower Show page)

Design

Review of the specific Design categories for the 2022 Flower Show

Peggy Cullimore-Klein

Petite

- A design ranging from 3 inches to 12 inches. Trifold to determine height, width, and depth as well as any additional staging provided. Additional staging proved by exhibitor is considered as part of the height requirement.



- Additional information can be found in the Handbook for Flower Shows - Chapter 7 (link on [District-One-Flower-Shows \(sigardenclubs.org\)](http://sigardenclubs.org) on the District Flower Show page)

Education



Lynne McNamara
Lucille Bauer
Joel Heffner

4/30/2022



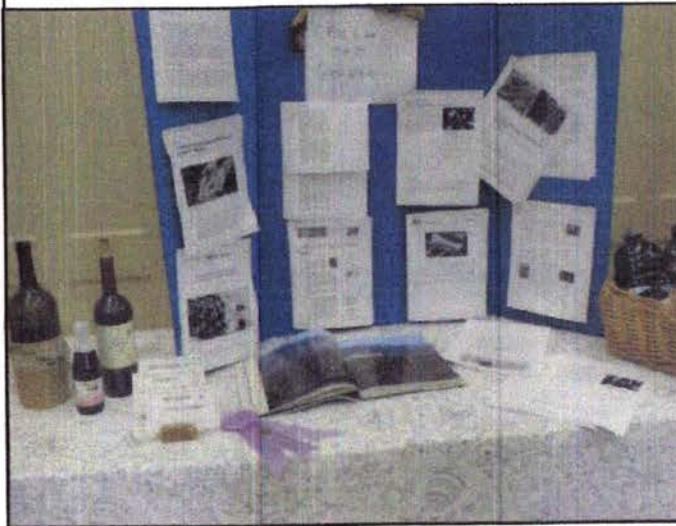
Botanical Arts



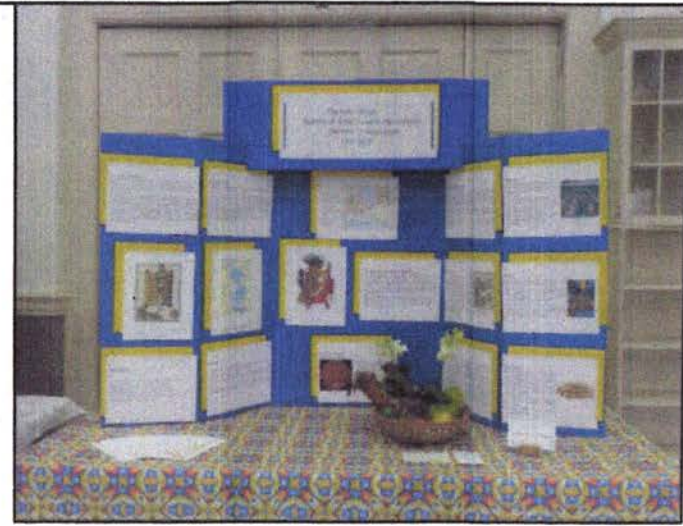
Education

Lynne McNamara

- To inform members and the public about goals and objectives of NGC
 - To coordinate the interests and activities of the State Garden Clubs, together with similar organizations in the United States and in foreign countries.
 - To aid in the protection and conservation of natural resources.
 - To promote civic educational services and beautification, and to encourage the improvement of roadsides and parks.
 - To encourage the establishment and maintenance of botanical gardens, arboreta and garden education centers for the advancement of sciences and for the enjoyment and education of the public.
 - To advance the study of gardening, landscape design, environmental issues, floral design and horticulture, and assist deserving students in these fields of endeavor through college scholarships.
 - To cooperate with other organizations to further interest in horticulture, conservation, environmental protection and civic beautification.



4/30/2022

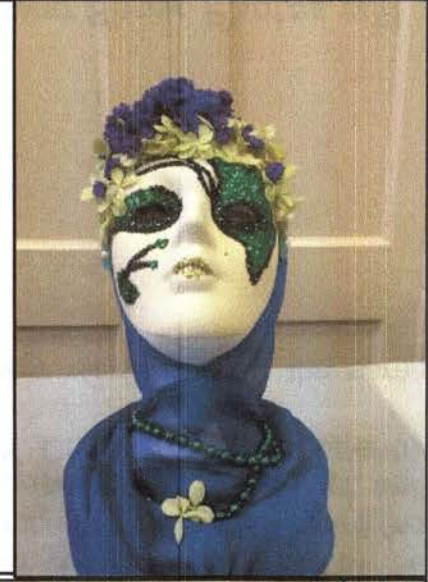


16

Botanical Arts

Lucille Bauer

- Botanical Arts is a Division that allows for additional types of Horticulture, Design and other Art like exhibits. This Divisional additional opportunities for exhibiting and creativity.
- Examples shown here are a decorated plate, a mask, hats, necklace, and napkin rings.
- Additional information can be found in the Handbook for Flower Shows - Chapter 10 (link on [District-One-Flower-Shows \(sigardencлубs.org\)](http://District-One-Flower-Shows.sigardencлубs.org) on the District Flower Show page)



**BOTANICAL ARTS - PHOTOGRAPHY
SECTION B - "LOUIS DAGUERRE GALLERY" CLASSES 4, 5, 6**

There are 3 Classes that you can enter.

CLASS 4 - "FRUIT"

Keywords: Color and Fruit"

CLASS 5 - "SCENT OF FLOWERS"

Keywords: Color and Flowers

CLASS 6 - "GARDEN SCENE"

Keywords: Black-and-White, Sepia, Garden Scene

How to Enter :

1. Classes are open to First District garden club members only regardless of skill
2. Judging is according to scale of points from HB p.131.
3. All photos must be entered by email only by **May 18, 2022**. Committee reserves the right to determine if photograph does not fit entered class. Photos must be emailed to photocontestfirstdistrict@gmail.com (no later than May 18, 2022. Entries are limited to the first eight(8) images received in each class. Committee will make prints of the eight(8) entries no larger than eight (8) inches on the longest side. Entries will be directly mounted on a white board (no mats will be added). Along with the emailed photo, exhibitor must include their name, club, address, phone number, and class that the photo is being entered in. **SEND SEPARATE EMAILS FOR EACH ENTRY**. Consultant will fill out entry cards and place entries. Judging will take place online before June 11, 2022.
4. Exhibitors may enter up to three(3) photographs, only one(1) entry per class. Exhibitor may not enter the same photograph in more than one(1) class.
5. Photographs previously entered in an NGC, Inc. show are not permitted.

You Tube Video

<https://www.youtube.com/watch?v=dXi7SOEU3As>

Got a Question?

Email : photocontestfirstdistrict@gmail.com

We will have three independent judges, who will meet online prior to the Flower Show. Photos will be printed and displayed at the Flower Show.

Joel Heffner Photography Chair

4/30/2022



Questions & Answers

Thank You

Suzanne Quinn

Suzanne@tquinn.com

www.sigardenclubs.org



4/30/2022

19