



OFFERING MEMORANDUM

19 E 41ST PL

SAN MATEO, CA 94403

COMPASS
COMMERCIAL

JALILI
COMMERCIAL GROUP



CONFIDENTIALITY & DISCLAIMER

All materials and information received or derived from Compass Commercial - San Francisco & Los Angeles its directors, officers, agents, advisors, affiliates and/or any third party sources are provided without representation or warranty as to completeness, veracity, or accuracy, condition of the property, compliance or lack of compliance with applicable governmental requirements, developability or suitability, financial performance of the property, projected financial performance of the property for any party's intended use or any and all other matters.

Neither Compass Commercial - San Francisco & Los Angeles its directors, officers, agents, advisors, or affiliates makes any representation or warranty, express or implied, as to accuracy or completeness of the any materials or information provided, derived, or received. Materials and information from any source, whether written or verbal, that may be furnished for review are not a substitute for a party's active conduct of its own due diligence to determine these and other matters of significance to such party. Compass Commercial - San Francisco & Los Angeles will not investigate or verify any such matters or conduct due diligence for a party unless otherwise agreed in writing.

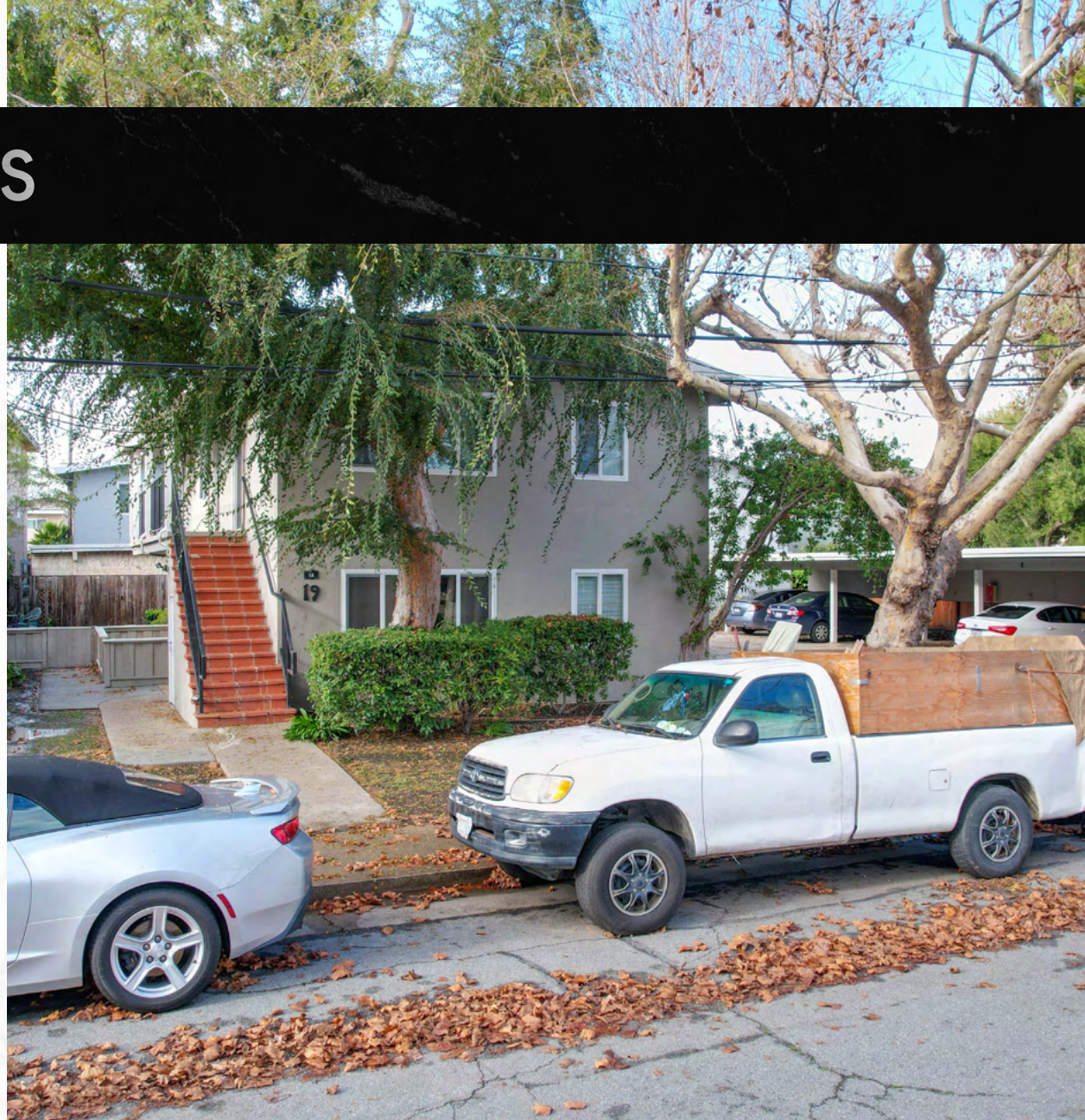
EACH PARTY SHALL CONDUCT ITS OWN INDEPENDENT INVESTIGATION AND DUE DILIGENCE.

Any party contemplating or under contract or in escrow for a transaction is urged to verify all information and to conduct their own inspections and investigations including through appropriate third party independent professionals selected by such party. All financial data should be verified by the party including by obtaining and reading applicable documents and reports and consulting appropriate independent professionals. Compass Commercial - San Francisco & Los Angeles makes no warranties and/or representations regarding the veracity, completeness, or relevance of any financial data or assumptions. Compass Commercial - San Francisco & Los Angeles does not serve as a financial advisor to any party regarding any proposed transaction. All data and assumptions regarding financial performance, including that used for financial modeling purposes, may differ from actual data or performance. Any estimates of market rents and/or projected rents that may be provided to a party do not necessarily mean that rents can be established at or increased to that level. Parties must evaluate any applicable contractual and governmental limitations as well as market conditions, vacancy factors and other issues in order to determine rents from or for the property.

Legal questions should be discussed by the party with an attorney. Tax questions should be discussed by the party with a certified public accountant or tax attorney. Title questions should be discussed by the party with a title officer or attorney. Questions regarding the condition of the property and whether the property complies with applicable governmental requirements should be discussed by the party with appropriate engineers, architects, contractors, other consultants and governmental agencies. All properties and services are marketed by Compass Commercial - San Francisco & Los Angeles in compliance with all applicable fair housing and equal opportunity laws.

TABLE OF CONTENTS

4	PROPERTY INFORMATION & PHOTOS
11	LOCATION INFORMATION
15	FINANCIAL ANALYSIS
20	LEASE COMPARABLES
25	SALE COMPARABLES
30	MARKET OVERVIEW



Theodore Wong, CCIM
Vice President
License: CA 02016737
650.228.9930
theodore.wong@compass.com

Sam Jalili
Executive Vice President
License: CA 02053100
408.316.2157
sam.jalili@compass.com

Aparna Sayana
Senior Associate
License: CA 01387613
408.691.7717
aparna.sayana@compass.com

COMPASS
COMMERCIAL

JALILI
COMMERCIAL GROUP



SECTION 1

PROPERTY INFORMATION & PHOTOS





EXECUTIVE SUMMARY

19 E 41st Place is a well-maintained six-unit multifamily asset in the desirable San Mateo submarket. Built in 1957 and significantly renovated in 2014, the 2,447 SF building on a 7,699 SF lot features upgraded interiors, improved building systems, dual-pane windows, and refreshed exterior finishes. The property offers six spacious studio units, including one with a private yard and one with a private patio.

Operational efficiency is a key advantage, with tenants paying all utilities through RUBS, minimizing operating expenses. Additional upside includes an owner-owned on-site laundry machine and six dedicated carport parking spaces, a strong amenity in this Peninsula location.

Property Type	Multifamily
Number Of Units	6
Building Size	2,447 SF
Lot Size	7,699 SF
Year Built	1957

PRICE ANALYSIS

Offering Price	\$2,050,000
\$/Unit	\$341,667
\$/SF	\$838.45
Current CAP	4.48%
Current GRM	15.72
Pro Forma CAP	5.15%
Pro Forma GRM	14.19

UNIT TYPE	COUNT	SIZE	RENT
0 BR 1 BA	6	407 SF	\$1,812
Totals	6	2,447 SF	\$10,870

PROPERTY DETAILS

Address	19 E 41st Pl, San Mateo, CA 94403
APN	040-073-100
Zoning	R4
Building Size	2,447 SF
Lot Size	7,699 SF
Year Built	1957
# Units	6

Situated in a prime Silicon Valley location, 19 E 41st Place is a well-maintained six-unit multifamily asset located in San Mateo, one of the Peninsula's most supply-constrained and commuter-driven rental markets. The property is ideally positioned near Hillsdale Mall, Caltrain, El Camino Real, and major commuter corridors, offering tenants convenient access to leading technology and healthcare employers throughout the region. Nearby employment drivers include Google, Intuit, Adobe, Microsoft, Atlassian, and Sutter Health, supporting sustained rental demand from a highly educated, professional tenant base.

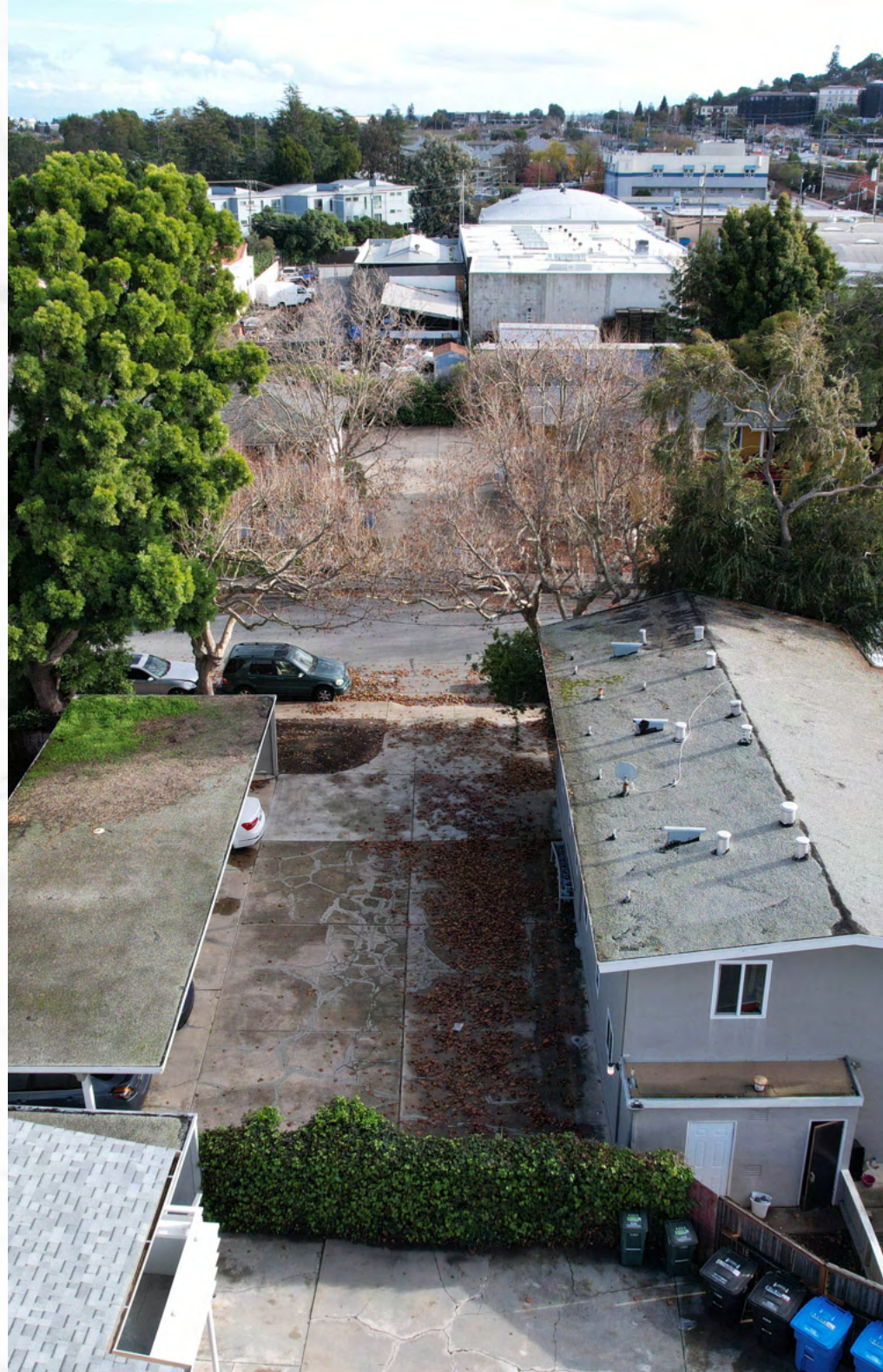
Originally constructed in 1957 and significantly renovated in 2014, the ±2,447 SF building sits on a ±7,699 SF lot and features upgraded interiors, improved building systems, dual-pane windows, and refreshed exterior finishes that contribute to strong curb appeal and low ongoing maintenance. The property consists of six spacious studio units, a highly desirable unit mix catering to strong commuter and professional demand. Two units include private outdoor living spaces, including one with a fenced private yard and another with a private patio, enhancing tenant appeal and retention.

Operational efficiency is a key investment advantage, with tenants paying all utilities through RUBS, significantly reducing operating expenses and improving net operating income. The property includes six dedicated carport parking spaces, a valuable amenity in this parking-constrained Peninsula submarket. Additionally, the building features an owner-owned on-site laundry machine that is not currently being charged, providing the buyer with immediate income upside through the implementation of laundry fees. Overall, 19 E 41st Place represents a turnkey, low-maintenance multifamily investment with stable in-place operations, embedded upside, and long-term appreciation potential in one of the Peninsula's most resilient rental markets.

HIGHLIGHTS

- Prime central San Mateo location near Hillsdale Mall, Caltrain, El Camino Real, and major commuter corridors.
- (6) Spacious studio units fully renovated in 2014 with upgraded interiors, systems, dual-pane windows, and refreshed exterior finishes.
- Efficient 2,447 SF building on a 7,699 SF lot with strong curb appeal.
- Two units include private outdoor spaces: one fenced yard and one private patio.
- Tenant-paid utilities through RUBS, reducing operating expenses and improving NOI.
- (6) Dedicated carport parking spaces.
- Owner-owned on-site laundry machine with additional income potential.
- Turnkey, low-maintenance asset in a supply-constrained Peninsula rental market.
- Attractive studio unit mix catering to strong commuter and professional tenant demand.







FLOOR PLAN

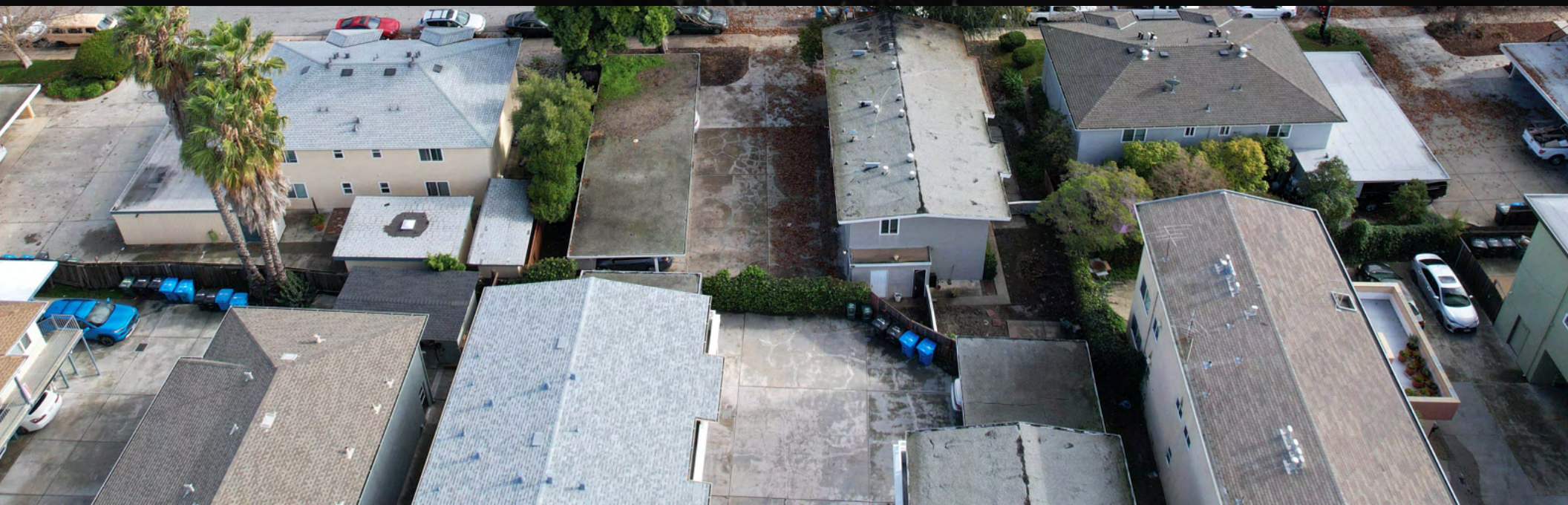
STUDIO
0 BR/ 1 BA
407 SF





SECTION 2

LOCATION INFORMATION



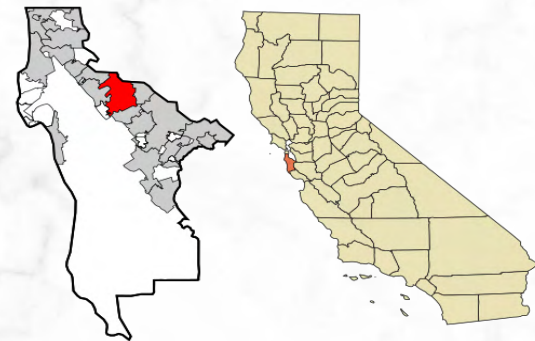


METRO OVERVIEW

San Mateo is a highly desirable Peninsula city strategically located between San Francisco and Silicon Valley, offering direct access to major employment hubs, transportation corridors, and top-tier amenities. Positioned along U.S. Highway 101, Interstate 280, and Caltrain, the city provides exceptional regional connectivity for commuters and businesses alike. San Mateo benefits from a strong local economy driven by technology, life sciences, healthcare, and professional services, with proximity to leading employers in Foster City, Redwood Shores, and South San Francisco.

The city features a vibrant downtown core with a mix of retail, dining, and entertainment options, complemented by well-established residential neighborhoods that attract a diverse and affluent tenant base. San Mateo is known for its high quality of life, strong public and private schools, extensive parks and waterfront access, and consistent demand for housing. Limited land availability, strict zoning controls, and sustained population and job growth continue to support long-term real estate fundamentals, making San Mateo a resilient and attractive market for both investors and end users.

If you want, I can tighten this further for a single-slide version or tailor it specifically for a multifamily, mixed-use, or development asset.



San Mateo Submarket Overview

San Mateo/Burlingame ranks as the second-largest apartment submarket in the San Francisco metro area, with a total inventory of 22,400 units. The area is primarily composed of older 1 & 2 Star buildings, which account for 15,000 units, roughly 70% of the total stock.

Over the past ten years, the submarket has steadily improved its standing relative to neighboring cities, with apartment rents and property values moving closer to the San Francisco average. Major employers, such as Facebook, have expanded their presence, attracting new groups of young professionals and renters. San Mateo's central peninsula location appeals to couples and families seeking access to various employment centers throughout the Bay Area. Public transportation is provided by Caltrain, which connects San Francisco and San Jose. The San Mateo-Hayward Bridge links the submarket to the East Bay.

Across the broader San Francisco market, apartment demand has surged over the past year, driven by increased investment in AI technologies, with a significant portion of this investment focused on San Francisco. At the same time, a slowdown in new development has limited the supply of new units, resulting in lower vacancies and higher rents. San Francisco now leads the nation in annual rent growth.

As of 2025 Q4, San Mateo/Burlingame is among the metro's most active submarkets for new construction. Newly built communities have been well received by renters, placing the area among the leaders in net absorption.

While the delivery of new projects has put upward pressure on vacancy rates, these developments have generally leased quickly. After a slowdown in 2023, rent growth accelerated in 2024 and surpassed its long-term average in 2025.

Looking ahead, recent layoffs at tech companies have somewhat weakened renter demand, which could pose leasing challenges for both new and existing properties as additional units come to market in the coming quarters.



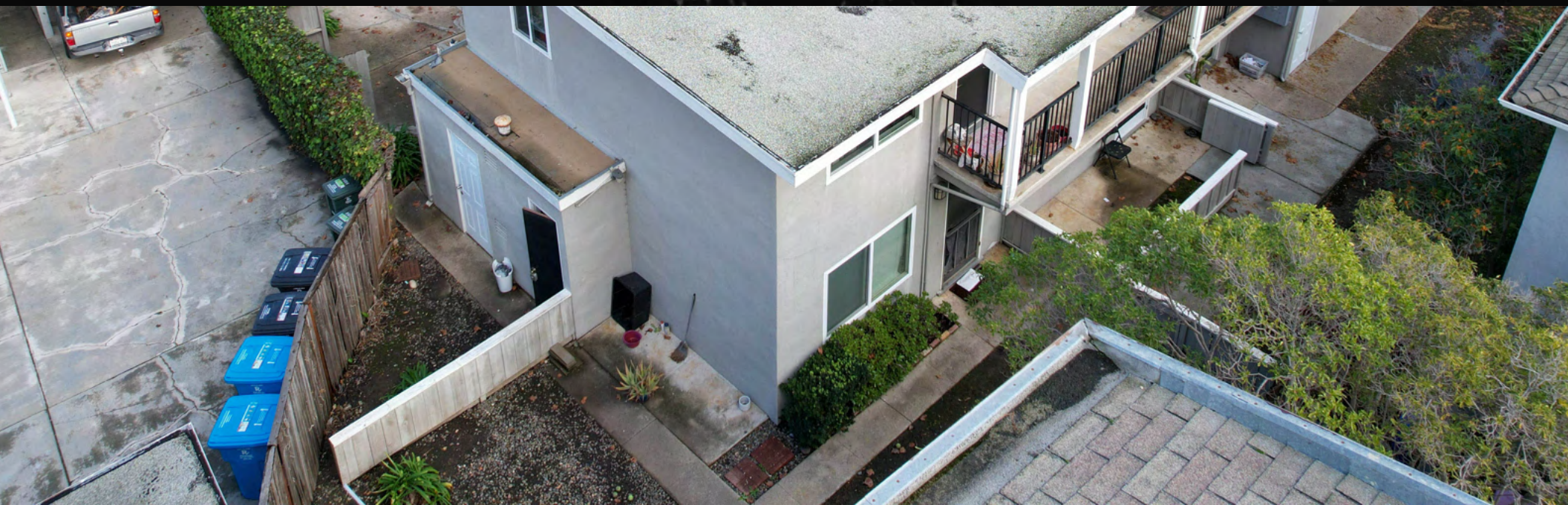
RETAILER MAP





SECTION 3

FINANCIAL ANALYSIS



FINANCIAL SUMMARY

INVESTMENT OVERVIEW	CURRENT	PRO FORMA
Price	\$2,050,000	\$2,050,000
\$/Unit	\$341,667	\$341,667
\$/SF	\$838	\$838
CAP	4.48%	5.15%
GRM	15.72	14.19

OPERATING DATA	CURRENT	PRO FORMA
Gross Scheduled Rent	\$130,440	\$144,000
Other Income	\$0	\$420
Total Scheduled Income	\$130,440	\$144,420
Utility Reimbursement	\$5,627	\$5,627
Vacancy Factor	-\$3,913	-\$4,333
Gross Income	\$132,154	\$145,714
Operating Expenses	\$40,212	\$40,212
Net Operating Income	\$91,942	\$105,502



RENT ROLL

UNIT NUMBER	BEDS	BATHS	UNIT SIZE (SF)	CURRENT RENT	CURRENT RENT/SF	MARKET RENT	MARKET RENT/SF
Unit 1	0	1	407 SF	\$1,895	\$4.66	\$2,000	\$4.91
Unit 2	0	1	407 SF	\$1,795	\$4.41	\$2,000	\$4.91
Unit 3	0	1	407 SF	\$1,895	\$4.66	\$2,000	\$4.91
Unit 4	0	1	407 SF	\$1,695	\$4.16	\$2,000	\$4.91
Unit 5	0	1	407 SF	\$1,795	\$4.41	\$2,000	\$4.91
Unit 6	0	1	407 SF	\$1,795	\$4.41	\$2,000	\$4.91
Totals/Averages	0	6	2,447 SF	\$10,870	\$4.45	\$12,000	\$4.91



INCOME & EXPENSES

OPERATING DATA	CURRENT	PRO FORMA
Gross Scheduled Rent ⁽¹⁾	\$130,440	\$140,400
Laundry Income ⁽²⁾	\$0	\$420
Total Scheduled Income	\$130,440	\$140,820
Utility Reimbursement ⁽³⁾	\$5,627	\$5,627
Vacancy Factor ⁽⁴⁾	-\$3,913	-\$4,333
Gross Income	\$132,154	\$145,714

EXPENSES	CURRENT	PRO FORMA
Property Taxes ⁽⁵⁾	\$22,796	\$22,796
Assessments ⁽⁶⁾	\$729	\$729
Insurance ⁽⁷⁾	\$6,500	\$6,500
Gas & Electric ⁽⁸⁾	\$1,243	\$1,243
Water & Sewer ⁽⁹⁾	\$2,069	\$2,069
Garbage ⁽¹⁰⁾	\$2,315	\$2,315
Landscaping ⁽¹¹⁾	\$1,560	\$1,560
Repairs & Maintenance ⁽¹²⁾	\$3,000	\$3,000
Total Expenses	\$40,212	\$40,212

Net Operating Income	\$91,942	\$105,505
CAP	4.48%	5.15%
GRM	15.72	14.19



NOTES

- (1) Based on in-place lease agreements.
- (2) Pro forma assumes installation of coin/card-operated laundry machines and reflects a conservative market assumption of \$35 per unit per month.
- (3) Tenant utility reimbursements are capped at actual utility expense for underwriting purposes.
- (4) Underwritten at -3.00% of Total Scheduled Income.
- (5) Ad valorem property taxes are estimated at 1.1201% of the purchase price.
- (6) Assessment amounts are sourced directly from the property's current tax bill.
- (7) Estimated based on comparable properties.
- (8) Actual historical cost based on the 2024 operating statement provided by ownership.
- (9) Actual historical cost based on the 2024 operating statement provided by ownership.
- (10) Actual historical cost based on the 2024 operating statement provided by ownership.
- (11) Contracted landscaping expense of \$130 per month, consistent with historical operations.
- (12) Underwritten at \$500 per unit annually, consistent with common market assumptions for similar properties.





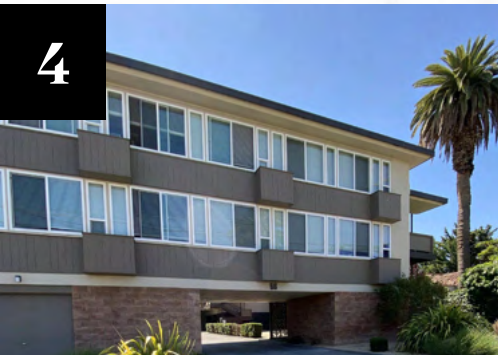
SECTION 4

LEASE COMPARABLES

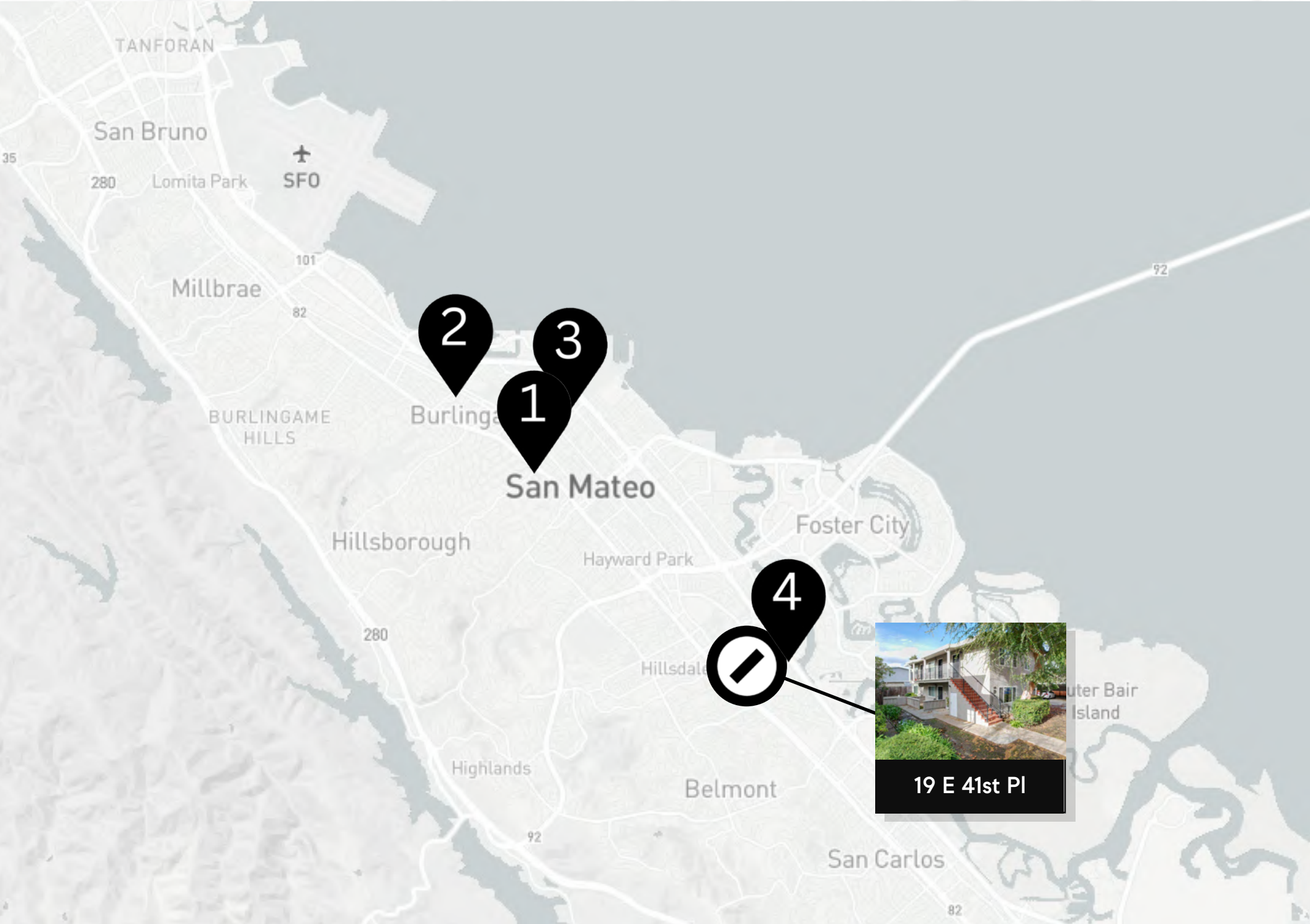


LEASE COMPARABLES

	BEDS	BATHS	SIZE	RENT	\$/SF
 19 East 41st Place, San Mateo	0	1	407 SF	\$1,700	\$4.17
1 311 8th Ave APT 1, San Mateo	0	1	400 SF	\$2,050	\$5.13
2 243 N Ellsworth Ave, San Mateo	0	1	450 SF	\$2,395	\$5.32
3 1022 E 4th Ave APT 4, San Mateo	0	1	550 SF	\$2,350	\$4.27
4 66 E 39th Ave #16, San Mateo	0	1	450 SF	\$1,995	\$4.43
Averages	0	1	462 SF	\$2,197	\$4.79



LEASE COMPARABLES



LEASE COMPARABLES

1

311 8TH AVE APT 1
SAN MATEO, CA 94401

ON MARKET



Average Rent	\$2,050
Size	400 SF
\$/SF	\$5.13
Beds	0
Baths	1

2

243 N ELLSWORTH AVE
SAN MATEO, CA 94401

ON MARKET



Average Rent	\$2,395
Size	450 SF
\$/SF	\$5.32
Beds	0
Baths	1

3

1022 E 4TH AVE APT 4
SAN MATEO, CA 94401

ON MARKET



Average Rent	\$2,350
Size	550 SF
\$/SF	\$4.27
Beds	0
Baths	1

LEASE COMPARABLES

4

66 E 39TH AVE APT 16
SAN MATEO, CA 94403

ON MARKET

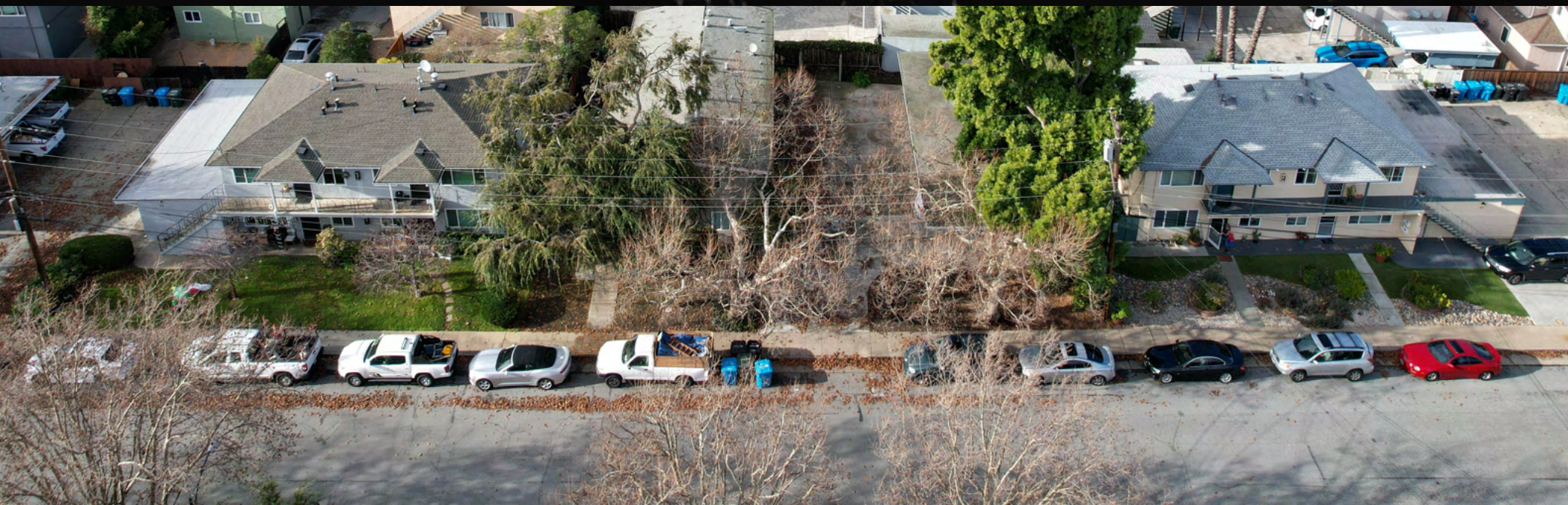


Average Rent	\$1,995
Size	450 SF
\$/SF	\$4.43
Beds	0
Baths	1



SECTION 5

SALE COMPARABLES

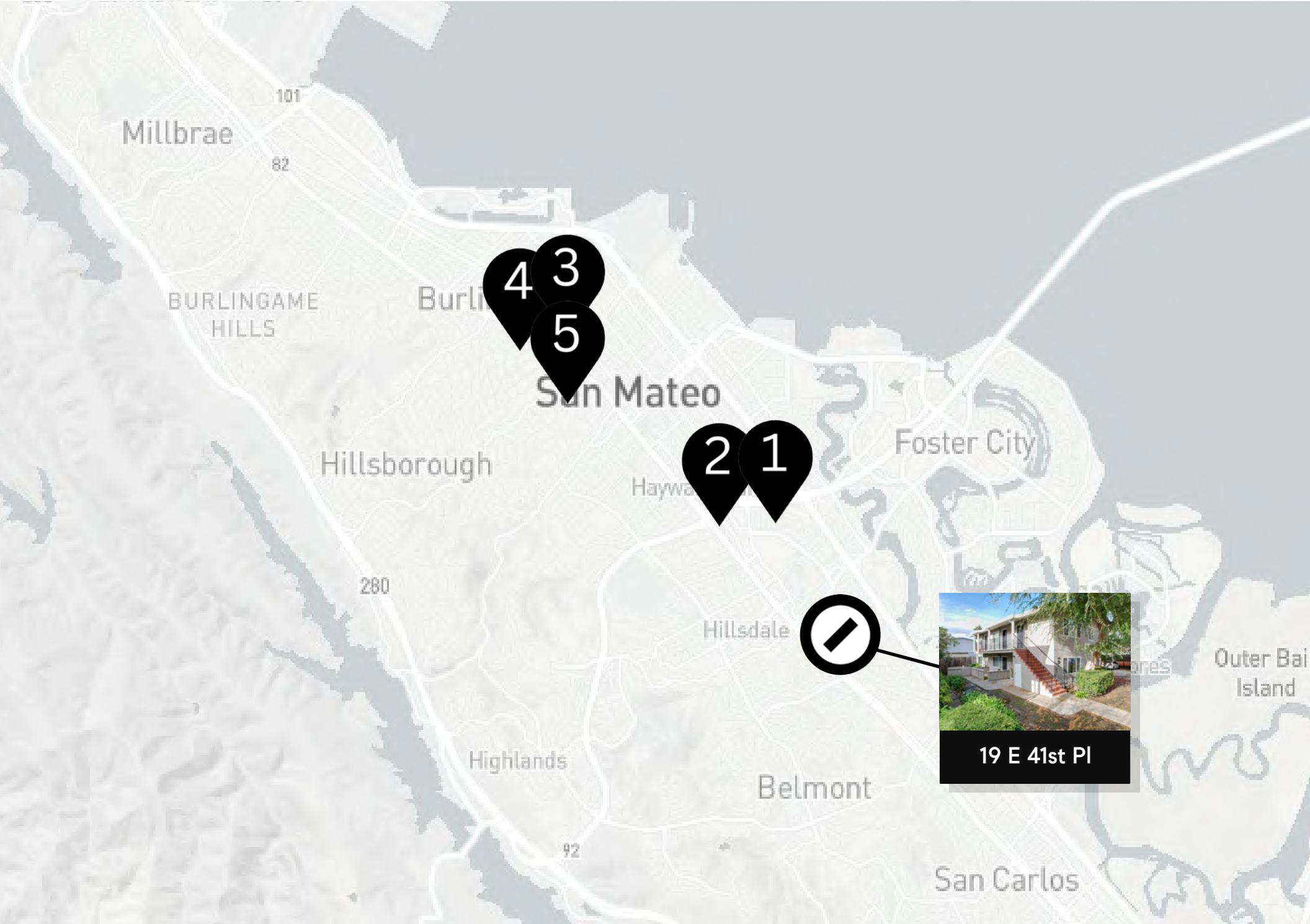


SALE COMPARABLES

		PRICE	# UNITS	BUILDING SIZE	\$/SF	LOT SIZE	CAP	GRM	\$/UNIT	DATE SOLD
🕒	19 East 41st Place, San Mateo	\$2,050,000	6	2,447 SF	\$838	7,699 SF	4.48%	16.75	\$341,667	Subject
1	518 19th Ave, San Mateo	\$2,450,000	7	5,440 SF	\$450	8,006 SF	4.03%	14.39	\$350,000	On Market
2	1956 Ivy St, San Mateo	\$2,049,000	6	4,192 SF	\$489	5,667 SF	3.85%	15.91	\$341,500	11/24/2025
3	23 N El Camino Real, San Mateo	\$1,950,000	5	5,395 SF	\$361	6,000 SF	3.62%	15.96	\$390,000	11/19/2025
4	160 N Claremont St, San Mateo	\$1,888,888	5	4,145 SF	\$456	5,980 SF	4.35%	13.09	\$377,778	02/25/2025
5	411 N San Mateo Dr, San Mateo	\$1,987,000	5	5,016 SF	\$396	6,050 SF	5.17%	13.66	\$397,400	02/14/2025
	Averages	\$1,968,722	5	4,687 SF	\$426	5,924 SF	4.25%	14.66	\$376,669	



SALE COMPARABLES



SALE COMPARABLES

1

518 19TH AVE
SAN MATEO, CA 94403

ON MARKET



Sale Price	\$2,450,000
Building Size	5,440 SF
\$/SF	\$450
Lot Size	8,006 SF
# Units	7
\$/Unit	\$350,000
CAP	4.03%
GRM	14.39
Year Built	1958

Notes:

Unit mix: (3) Studios (4) 1 BR 1 BA - Renovated

2

1956 IVY ST
SAN MATEO, CA 94403

SOLD 11/24/2025



Sale Price	\$2,049,000
Building Size	4,192 SF
\$/SF	\$489
Lot Size	5,667 SF
# Units	6
\$/Unit	\$341,500
CAP	3.85%
GRM	15.91
Year Built	1955

Notes:

Unit mix: (6) 1 BR 1 BA

3

23 N EL CAMINO REAL
SAN MATEO, CA 94401

SOLD 11/19/2025



Sale Price	\$1,950,000
Building Size	5,395 SF
\$/SF	\$361
Lot Size	6,000 SF
# Units	5
\$/Unit	\$390,000
CAP	3.62%
GRM	15.96
Year Built	1977

Notes:

Unit mix: (3) 1 BR 1 BA (2) 2 BR 1 BA

SALE COMPARABLES

4

160 N CLAREMONT ST
SAN MATEO, CA 94401

SOLD 02/25/2025



Sale Price	\$1,888,888
Building Size	4,145 SF
\$/SF	\$456
Lot Size	5,980 SF
# Units	5
\$/Unit	\$377,778
CAP	4.35%
GRM	13.09
Year Built	1900

Notes:

Unit mix: (2) 1 BR 1 BA (2) 2 BR 1 BA (1) 3 BR 1 BA

5

411 N SAN MATEO DR
SAN MATEO, CA 94401

SOLD 02/14/2025



Sale Price	\$1,987,000
Building Size	5,016 SF
\$/SF	\$396
Lot Size	6,050 SF
# Units	5
\$/Unit	\$397,400
CAP	5.17%
GRM	13.66
Year Built	1954

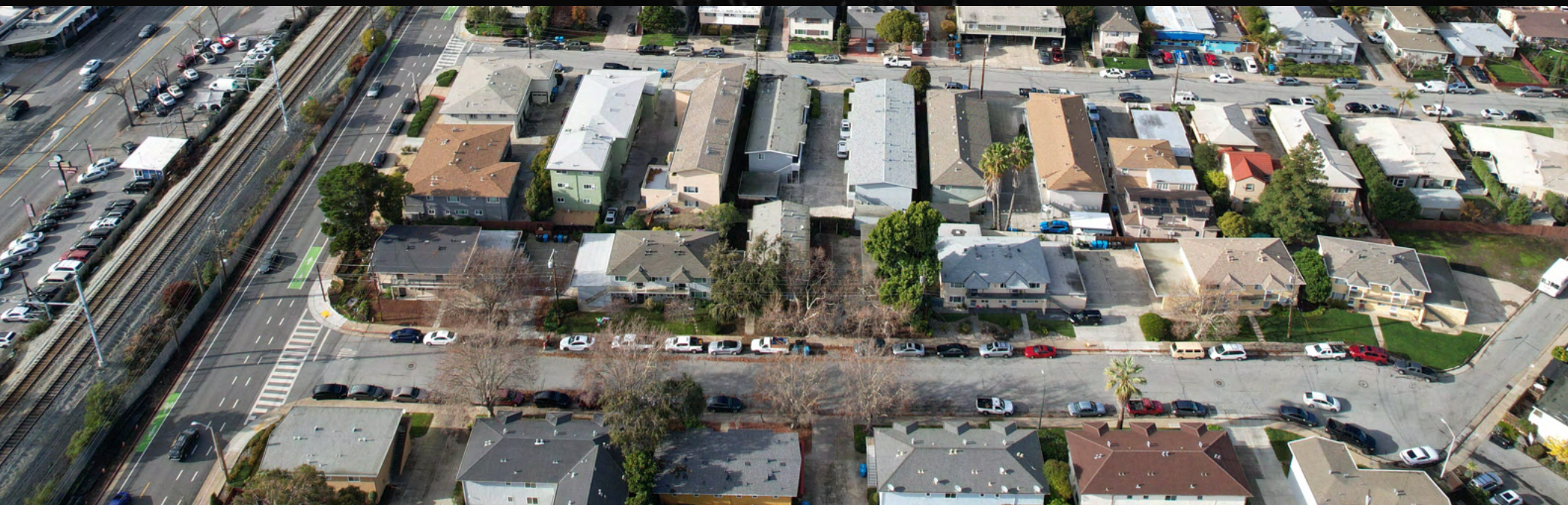
Notes:

Unit mix: (3) 1 BR 1 BA (2) 2 BR 1 BA



SECTION 6

MARKET OVERVIEW



MARKET OVERVIEW



DEMOGRAPHICS

POPULATION	1 MILE	3 MILES	5 MILES
2024 Population	31,046	162,333	256,276
Median Age	39	42.1	41.7
Bachelor's Degree or Higher	59%	63%	61%

HOUSEHOLDS	1 MILE	3 MILES	5 MILES
Total Households	11,612	62,106	98,008
Average Household Size	2.6	2.5	2.5
Owner Occupied Households	5,430	32,929	50,124
Renter Occupied Households	5,638	26,232	43,367
Median House Value	\$1,128,790	\$1,130,621	\$1,128,143

INCOME	1 MILE	3 MILES	5 MILES
Average Household Income	\$178,271	\$183,815	\$181,255
Median Household Income	\$158,426	\$163,384	\$158,279

MARKET OVERVIEW

DAYTIME EMPLOYMENT

	1 MILE			3 MILES			5 MILES		
	EMPLOYEES	BUSINESSES	EMPLOYEES/ BUSINESS	EMPLOYEES	BUSINESSES	EMPLOYEES/ BUSINESS	EMPLOYEES	BUSINESSES	EMPLOYEES/ BUSINESS
Service-producing Industries	13,686	1,386	10	99,256	10,119	10	148,079	16,626	9
Trade, Transportation & Utilities	2,021	219	9	10,562	1,151	9	17,920	1,873	10
Information	905	40	23	8,560	399	21	12,079	576	21
Financial Activities	3,568	165	22	22,866	1,433	16	26,459	2,159	12
Professional & Business Services	1,516	180	8	16,300	2,015	8	26,221	3,147	8
Education & Health Services	2,783	487	6	16,685	2,939	6	28,250	5,309	5
Leisure & Hospitality	1,693	123	14	10,780	876	12	16,048	1,360	12
Other Services	520	152	3	4,979	1,126	4	8,143	1,878	4
Public Administration	680	20	34	8,524	180	47	12,959	324	40
Goods-producing Industries	608	131	5	10,167	916	11	16,184	1,471	11
Natural Resources & Mining	0	0	-	55	19	3	83	29	3
Construction	415	99	4	3,327	606	5	5,521	984	6
Manufacturing	193	32	6	6,785	291	23	10,580	458	23
Total	14,294	1,517	9	109,423	11,035	10	164,263	18,097	9

MAJOR EMPLOYERS





Theodore Wong, CCIM

Vice President

License: CA 02016737

650.228.9930

theodore.wong@compass.com

Sam Jalili

Executive Vice President

License: CA 02053100

408.316.2157

sam.jalili@compass.com

Aparna Sayana

Senior Associate

License: CA 01387613

408.691.7717

aparna.sayana@compass.com

COMPASS
COMMERCIAL

JALILI
COMMERCIAL GROUP