

PhoSul®
GROWS WITH NATURE®

Alfalfa Side by Side Field Test

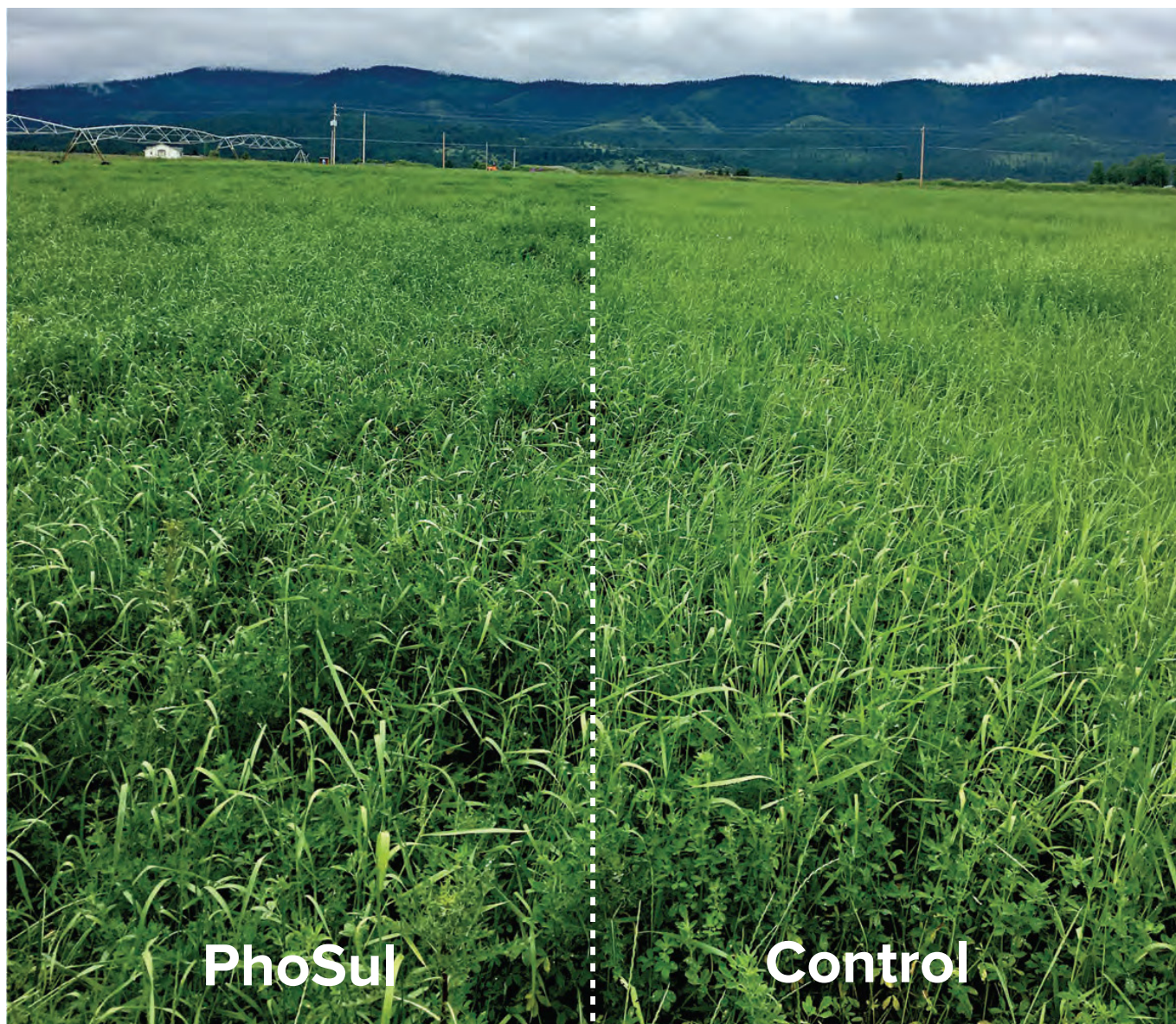
PhoSul® Vs Granulated Rock Phosphate with Gypsum and Poultry Manure

Alfalfa side by side at 500 lbs/acre - PhoSul® produced winning results.

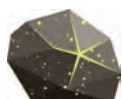
- 212% Increase in Yield
- 26% Increase in Protein
- 100% Increase in Soil Nitrate
- 26% Increase in Soil Ammonium



A Montana producer regularly applied 500 lbs/acre of granulated rock phosphate with gypsum and poultry manure (Control) to his alfalfa fields. In the spring of 2019 he designated 4 acres of his Alfalfa crop to PhoSul at 500 lbs/acre. That year he planted new alfalfa with a nurse crop of spring wheat under a pivot. No major differences were seen in the fall of 2019 during spring wheat harvest. However, in the spring of 2020, he observed a noticeable difference on his control crop compared to his crop with PhoSul.



Contact Eco Health Industries at 1-888-959-8986 for further information, or visit us at cropgrowthsciences.com



PhoSul®
GROWS WITH NATURE®

Alfalfa Field Test Results

The PhoSul® treated acres produced noticeably heavier yields plus dark healthy green foliage and some lodging.



PhoSul® Alfalfa Test Results

	Fresh Weight	Dry Weight
Sample 1	8.12 lbs	4.81 lbs
Sample 2	7.31 lbs	4.94 lbs
Crude Protein	18.8%	21.2%
Digestible Protein	14.7%	16.6%

The acres treated with competitor rock phosphate a yellowish green color with shorter plant heights and some disease incidence.



Rock Phosphate Alfalfa Test Results

	Fresh Weight	Dry Weight
Sample 1	3.18 lbs	1.75 lbs
Sample 2	2.00 lbs	0.94 lbs
Crude Protein	13.3%	15.6%
Digestible Protein	9.7%	11.3%

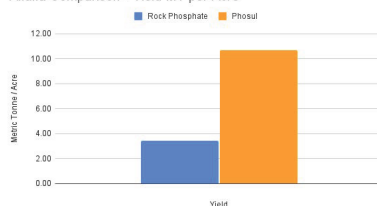
*Third party protein analysis by Soiltest Farm Consultants, Inc., certified by the National Forage Testing Association (NFTA).

Alfalfa Production PhoSul® Versus Rock Phosphate

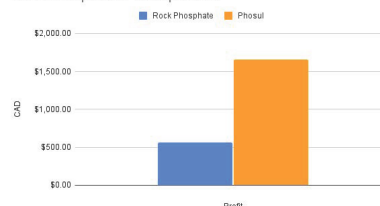
The dry weight of the control plot yielded 3.43 Mt/ac while the PhoSul plot yielded 10.70 Mt/ac., an increase of 7.27 Mt/ac. At CAD \$180/Mt that is \$1,309.39 gross profit improvement. Subtract net input costs at 500 lbs/acre (\$272.11/acre Phosul - \$52.15 acre of Rock P.) and that equals \$1,089.43/ac net improvement, making PhoSul a great investment in these conditions.

	Rock Phosphate	Phosul
Yield (MT/Acre)	3.43	10.70
Application (lbs/ac)	500	500
Price (CAD \$/ST)	230	1200
Cost (CAD \$/ac)	\$52.15	\$272.11
Revenue (Hay CAD 180/Mt)	\$617.14	\$1,926.53
Profit per Acre	\$564.99	\$1,654.42

Alfalfa Comparison - Yield MT per Acre



Alfalfa Comparison- Profit per acre



*Financial Numbers have been converted from US standard to Metric for comparison

Contact Eco Health Industries at 1-888-959-8986 for further information, or visit us at croptogrowthsciences.com