

Sailing Komodo

Open Trip

3 DAY
2 NIGHT

SCHEDULE & QUOTA

CLICK HERE

#opentrip

MEETING POINT¹

- Start from Komodo Airport (Ibj) / Hotel 10.00 WITA
- Finish at Komodo Airport (Ibj) / Hotel 11.00 WITA (take a flight after 11.30 WITA)

Thing to
know about
open trip

WHAT YOU'LL GET¹

- ✓ Pick up and drop-off (in and out harbour)
- ✓ Liveaboard boat with AC for 3 Day 2 Night
- ✓ Daily Breakfast, Lunch, and Dinner during trip (7 Times)
- ✓ Chef & Boat Crew
- ✓ Sundeck and Lazy Chairs
- ✓ Tender boat
- ✓ Snorkeling equipment
- ✓ Mineral water during trip
- ✓ Snack, Coffee, & Tea during trip
- ✓ Local Guide
- ✓ Life jacket
- ✓ Documentation (Drone, Gopro, Mirrorless)

FACILITY EXCLUDE¹

- Personal expenses
- Flight ticket to Labuan Bajo
- Hotel in Labuan Bajo
- Gratuity (Tip for Guide and Boat Crew)
- Entrance fee komodo national park for WNI (Local) IDR 250.000
- Entrance fee komodo national park for WNA (Foreign) IDR 550.000

ITINERARY - 3D 2N¹

Day One

1. Kelor Island
2. Manjarite
3. Kalong Island

Day Two

4. Padar Island
5. Long / Pink Beach
6. Komodo Island
7. Manta Point
8. Taka Makassar

Last Day

9. Sebayur Island

Note :

- Itinerary can be change due to the weather
- please note that meet Manta Rays is not guarantee, depend on weather & sea condition. and we will ignore complain about this.

#opentrip

RATES¹

- Infant (under 2 years old) are free of charge.
- Toddler (2-5 years old) are required to pay half of the price.
- Kids aged over 5 years old are subject to the normal rate (full price).

Terms &
Condition

BOOKING CONFIRMATION & PAYMENTS¹

- ✓ Down payment is minimum 30% from the total purchases.
- ✓ Invoice will be sent through whatsapp or email once the downpayment is paid.
- ✓ Final payment must be settled maximum 7 days before the trip. If final payment is not paid on the due date, then we have the rights to declare booking as cancelled.

RESCHEDULE¹

- Reschedule is only applicable maximum 30 days before the trip.
- Reschedule made less than 30 days before the trip will forfeit the down payment.

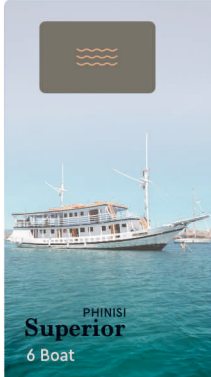
CANCELLATION¹

- Cancellations by guest means no refund, but can be transferred to another person (substitute guest).
- Cancellations or prohibition made by the harbourmaster or government due to weather condition, force majeure, natural disasters, terrorism, political instability, or other external events, means guest could reschedule the trip or receive a full refund.
- Cancellations made by boat operator for other reasons that are unavoidable (such as a sudden technical issue), means boat operator responsible for arranging a replacement vessel as an alternative solution with the same price or class range. If we fail to provide the replacement, guest shall receive a full refund.

#opentrip

3 class of
phinisi boat

GO TO PAGE BY CLICKING THE PHOTO¹





DETAIL PHOTOS
DOWNLOAD HERE

CLICK HERE



SUNDECK



DINING ROOM



MAIN DECK



TOILET



Boat Specification

Length : 26 Meters
Beam : 5 Meters
Cruising Speed : 7-10 Knot
Fresh Water Capacity : 8000 Litres
Fuel Capacity : 3000 Litres
Engine : Mitsubishi 6D16
Generator : PS120-30kva, Ps120-22kva
Navigations : Compass, Radar, AIS, Gps, Map
Radio : VHF Radio
Safety : Life Raft, Life Jacket, Ring Bouy, Fire Extinguisher, First Aid Kit
Speedboat : 6 Meter with Engine Yamaha 15 HP

Facility

Comfort cabin with AC
Daily Breakfast, Lunch, and Dinner
Coffee, Tea, Mineral Water, and Snack
Lazy Chair
Bean Bag
Sun Deck
Life Jacket
Snorkeling Gear
Dispenser
Karaoke Set

Cabin Information

Each of the 6 cabins are equipped with air conditioning,
2 private ensuite bathroom and 2 share bathroom with hot shower capacity 20-24 Pax.

Cabin : Type Bed

- 1 : 4x Single Bunk Bed (for 4 Pax)
- 2 : 4x Single Bunk Bed (for 4 Pax)
- 3 : 4x Single Bunk Bed (for 4 Pax)
- 4 : Queen Bed + 2x Single Bunk Bed (for 2-4 Pax)
- 5 : Queen Bed + 2x Extra Single Bed with Private Bathroom (for 2-4 Pax)

Price List

Share Cabin

▲ 4 Pax



- 4x Single Bunkbed
- Share Bathroom

Min 1 Pax **IDR 2.800.000 / Pax**

Full Ocean

▲ 2 - 4 Pax



- QueenBed + 2x Single Bunkbed
- Share Bathroom

Min 2 Pax **IDR 3.300.000 / Pax**
Add Pax **IDR 2.500.000 / Pax**

Master Ocean

▲ 2 - 4 Pax



- KingBed + 2x Extra Single Bed
- Private Bathroom

Min 2 Pax **IDR 4.300.000 / Pax**
Add Pax **IDR 2.500.000 / Pax**



DETAIL PHOTOS
DOWNLOAD HERE [CLICK HERE](#)



SUNDECK



DINING ROOM



UPPER DECK



SHARE
BATHROOM

Boat Specification

Length : 23 Meters
Beam : 4 Meters
Cruising Speed : 7-10 Knot
Fresh Water Capacity : 5000 Litres
Fuel Capacity : 3000 Litres
Engine : Yanmar 6 Cylinder TY 160
Generator : 30Kva, Emergency 7500watt
Navigations : Compass, Radar, AIS, Gps, Map
Radio : VHF Radio
Safety : Life Raft, Life Jacket, Ring Bouy, Fire Extinguisher, First Aid Kit
Speedboat : 6 Meter with Engine Yamaha 15 HP

Facility

Comfort cabin with AC
Daily Breakfast, Lunch, and Dinner
Coffee, Tea, Mineral Water, and Snack
Lazy Chair
Bean Bag
Sun Deck
Life Jacket
Snorkeling gear
Dispenser
Karaoke Set
Show Case Fridge

Cabin Information

Each of the 6 cabins are equipped with air conditioning, 3 private ensuite bathroom and 2 shared bathroom capacity 16-18 Pax.

- Cabin : Type Bed**
1 : 4x Single Bunk Bed (for 4 Pax)
2 : Queen Bunk Bed (for 2 Pax)
3 : Queen Bed + Single Bed (for 3 Pax)
4 : Queen Bunk Bed (for 2 Pax, Private Bathroom)
5 : Queen Bunk Bed (for 2 Pax, Private Bathroom)
6 : Queen Bed + Extra Bed (for 2-3 Pax, Private Bathroom)

Price List

<div>Share Cabin</div> <div>4 Pax</div> <div></div> <div></div> <div></div> <div></div> <div></div> <div></div> <div></div> <div></div> <div></div> <div></div> <div></div> <div></div> <div></div> <div></div> <div></div> <div></div> <div></div> <div></div> <div></div> <div></div> <div></div> <div></div> <div></div> <div></div> <div></div> <div></div> <div></div> <div></div> <div></div> <div></div> <div></div> <div></div> <div></div> <div></div> <div></div> <div></div> <div></div> <div></div> <div></div> <div></div> <div></div> <div></div> <div></div> <div></div> <div></div> <div></div> <div></div> <div></div> <div></div> <div></div> <div></div> <div></div> <div></div> <div></div> <div></div> <div></div> <div></div> <div></div> <div></div> <div></div> <div></div> <div></div> <div></div> <div></div> <div></div> <div></div> <div></div> <div></div> <div></div> <div></div> <div></div> <div></div> <div></div> <div></div> <div></div> <div></div> <div></div> <div></div> <div></div> <div></div> <div></div> <div></div> <div></div> <div></div> <div></div> <div></div> <div></div> <div></div> <div></div> <div></div> <div></div> <div></div> <div></div> <div></div> <div></div> <div></div> <div></div> <div></div> <div></div> <div></div> <div></div> <div></div> <div></div> <div></div> <div></div> <div></div> <div></div> <div></div> <div></div> <div></div> <div></div> <div></div> <div></div> <div></div> <div></div> <div></div> <div></div> <div></div> <div></div> <div></div> <div></div> <div></div> <div></div> <div></div> <div></div> <div></div> <div></div> <div></div> <div></div> <div></div> <div></div> <div></div> <div></div> <div></div> <div></div> <div></div> <div></div> <div></div> <div></div> <div></div> <div></div> <div></div> <div></div> <div></div> <div></div> <div></div> <div></div> <div></div> <div></div> <div></div> <div></div> <div></div> <div></div> <div></div> <div></div> <div></div> <div></div> <div></div> <div></div> <div></div> <div></div> <div></div> <div></div> <div></div> <div></div> <div></div> <div></div> <div></div> <div></div> <div></div> <div></div> <div></div> <div></div> <div></div> <div></div> <div></div> <div></div> <div></div> <div></div> <div></div> <div></div> <div></div> <div></div> <div></div> <div></div> <div></div> <div></div> <div></div> <div></div> <div></div> <div></div> <div></div> <div></div> <div></div> <div></div> <div></div> <div></div> <div></div> <div></div> <div></div> <div></div> <div></div> <div></div> <div></div> <div></div> <div></div> <div></div> <div></div> <div></div> <div></div> <div></div> <div></div> <div></div> <div></div> <div></div> <div></div> <div></div> <div></div> <div></div> <div></div> <div></div> <div></div> <div></div> <div></div> <div></div> <div></div> <div></div> <div></div> <div></div> <div></div> <div></div> <div></div> <div></div> <div></div> <div></div> <div></div> <div></div> <div></div> <div></div> <div></div> <div></div> <div></div> <div></div> <div></div> <div></div> <div></div> <div></div> <div></div> <div></div> <div></div> <div></div> <div></div> <div></div> <div></div> <div></div> <div></div> <div></div> <div></div> <div></div> <div></div> <div></div> <div></div> <div></div> <div></div> <div></div> <div></div> <div></div> <div></div> <div></div> <div></div> <div></div> <div></div> <div></div> <div></div> <div></div> <div></div> <div></div> <div></div> <div></div> <div></div> <div></div> <div></div> <div></div> <div></div> <div></div> <div></div> <div></div> <div></div> <div></div> <div></div> <div></div> <div></div> <div></div> <div></div> <div></div> <div></div> <div></div> <div></div> <div></div> <div></div> <div></div> <div></div> <div></div> <div></div> <div></div> <div></div> <div></div> <div></div> <div></div> <div></div> <div></div> <div></div> <div></div> <div></div> <div></div> <div></div> <div></div> <div></div> <div></div> <div></div> <div></div> <div></div> <div></div> <div></div> <div></div> <div></div> <div></div> <div></div> <div></div> <div></div> <div></div> <div></div> <div></div> <div></div> <div></div> <div></div> <div></div> <div></div> <div></div> <div></div> <div></div> <div></div> <div></div> <div></div> <div></div> <div></div> <div></div> <div></div> <div></div> <div></div> <div></div> <div></div> <div></div> <div></div> <div></div> <div></div> <div></div> <div></div> <div></div> <div></div> <div></div> <div></div> <div></div> <div></div> <div></div> <div></div> <div></div> <div></div> <div></div> <div></div> <div></div> <div></div> <div></div> <div></div> <div></div> <div></div> <div></div> <div></div> <div></div> <div></div> <div></div> <div></div> <div></div> <div></div> <div></div> <div></div> <div></div> <div></div> <div></div> <div></div> <div></div> <div></div> <div></div> <div></div> <div></div> <div></div> <div></div> <div></div> <div></div> <div></div> <div></div> <div></div> <div></div> <div></div> <div></div> <div></div> <div></div> <div></div> <div></div> <div></div> <div></div> <div></div> <div></div> <div></div> <div></div> <div></div> <div></div> <div></div> <div></div> <div></div> <div></div> <div></div> <div></div> <div></div> <div></div> <div></div> <div></div> <div></div> <div></div> <div></div> <div></div> <div></div> <div></div> <div></div> <div></div> <div></div> <div></div> <div></div> <div></div> <div></div> <div></div> <div></div> <div></div> <div></div> <div></div> <div></div> <div></div> <div></div> <div></div> <div></div> <div></div> <div></div> <div></div> <div></div> <div></div> <div></div> <div></div> <div></div> <div></div> <div></div> <div></div> <div></div> <div></div> <div></div> <div></div> <div></div> <div></div> <div></div> <div></div> <div></div> <div></div> <div></div> <div></div> <div></div> <div></div> <div></div> <div></div> <div></div> <div></div> <div></div> <div></div> <div></div> <div></div> <div></div> <div></div> <div></div> <div></div> <div></div> <div></div> <div></div> <div></div> <div></div> <div></div> <div></div> <div></div> <div></div> <div></div> <div></div> <div></div> <div></div> <div></div> <div></div> <div></div> <div></div> <div></div> <div></div> <div></div> <div></div> <div></div> <div></div> <div></div> <div></div> <div></div> <div></div> <div></div> <div></div> <div></div> <div></div> <div></div> <div></div> <div></div> <div></div> <div></div> <div></div> <div></div> <div></div> <div></div> <div></div> <div></div> <div></div> <div></div> <div></div> <div></div> <div></div> <div></div> <div></div> <div></div> <div></div> <div></div> <div></div> <div></div> <div></div> <div></div> <div></div> <div></div> <div></div> <div></div> <div></div> <div></div> <div></div> <div></div> <div></div> <div></div> <div></div> <div></div> <div></div> <div></div> <div></div> <div></div> <div></div> <div></div> <div></div> <div></div> <div></div> <div></div> <div></div> <div></div> <div></div> <div></div> <div></div> <div></div> <div></div> <div></div> <div></div> <div></div> <div></div> <div></div> <div></div> <div></div> <div></div> <div></div> <div></div> <div></div> <div></div> <div></div> <div></div> <div></div> <div></div> <div></div> <div></div> <div></div> <div></div> <div></div> <div></div> <div></div> <div></div> <div></div> <div></div> <div></div> <div></div> <div></div> <div></div> <div></div> <div></div> <div></div> <div></div> <div></div> <div></div> <div></div> <div></div> <div></div> <div></div> <div></div> <div></div> <div></div> <div></div> <div></div> <div></div> <div></div> <div></div> <div></div> <div></div> <div></div> <div></div> <div></div> <div></div> <div></div> <div></div> <div></div> <div></div> <div></div> <div></div> <div></div> <div></div> <div></div> <div></div> <div></div> <div></div> <div></div> <div></div> <div></div> <div></div> <div></div> <div></div> <div></div> <div></div> <div></div> <div></div> <div></div> <div></div> <div></div> <div></div> <div></div> <div></div> <div></div> <div></div> <div></div> <div></div> <div></div> <div></div> <div></div> <div></div> <div></div> <div></div> <div></div> <div></div> <div></div> <div></div> <div></div> <div></div> <div></div> <div></div> <div></div> <div></div> <div></div> <div></div> <div></div> <div></div> <div></div> <div></div> <div></div> <div></div> <div></div> <div></div> <div></div> <div></div> <div></div> <div></div> <div></div> <div></div> <div></div> <div></div> <div></div> <div></div> <div></div> <div></div> <div></div> <div></div> <div></div> <div></div> <div></div> <div></div> <div></div> <div></div> <div></div> <div></div> <div></div> <div></div> <div></div> <div></div> <div></div> <div></div> <div></div> <div></div>

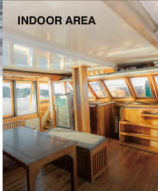


DETAIL PHOTOS
DOWNLOAD HERE

CLICK HERE



INDOOR AREA



DINING ROOM



MAIN DECK



TOILET



Boat Specification

Length : 26 Meters
Beam : 4.6 Meters
Cruising Speed : 7-10 Knot
Fresh Water Capacity : 6000 Litres
Fuel Capacity : 3000 Litres
Engine : Mitsubishi 6D16
Generator : 30Kva, Emergency 7500watt
Navigations : Compass, Radar, AIS, Gps, Map
Radio : VHF Radio
Safety : Life Raft, Life Jacket, Ring Bouy, Fire Extinguisher, First Aid Kit
Speedboat : 6 Meter with Engine Yamaha 15 HP

Facility

Comfort cabin with AC
Daily Breakfast, Lunch, and Dinner
Coffee, Tea, Mineral Water, and Snack
Lazy Bean Bag
Sun Deck
Life Jacket
Snorkeling gear
Refrigerator
Dispenser

Cabin Information

Each of the 6 cabins are equipped with air conditioning, 3 private ensuite bathroom and 2 shared bathroom capacity 17-18 Pax.

Cabin : Type Bed

- 1 : Queen Bed + Single Bunk Bed (for 2-3 Pax)
- 2 : Queen Bed + Single Bunk Bed (for 2-3 Pax)
- 3 : 2x Queen Bed + Single Bed (for 5 Pax)
- 4 : Queen Bed (for 2 Pax, Private Bathroom)
- 5 : Queen Bed (for 2 Pax, Private Bathroom)
- 6 : Queen Bed + Extra Bed (for 2-3 Pax, Private Bathroom)

Price List

Share Cabin

4 Pax



- 2x Queen Bed + Single Bed
- Share Bathroom

Min 1 Pax IDR 2.800.000 / Pax

Private Cabin

2 - 3 Pax



- Queen Bed + Single Bed
- Share Bathroom

Min 2 Pax IDR 3.300.000 / Pax
Add Pax IDR 2.500.000 / Pax

Deluxe Ocean

2 Pax



- QueenBed
- Private Bathroom

Min 2 Pax IDR 3.800.000 / Pax

Master Ocean

2-3 Pax



- QueenBed + Extra Bed
- Private Bathroom

Min 2 Pax IDR 4.200.000 / Pax
Add Pax IDR 2.500.000 / Pax



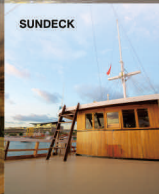
DETAIL PHOTOS
DOWNLOAD HERE

CLICK HERE

DINING ROOM



SUNDECK



MAIN DECK



TOILET



Boat Specification

Length : 33 Meters

Beam : 5.8 Meters

Cruising Speed : 7-10 Knot

Fresh Water Capacity : 5000 Litres

Fuel Capacity : 3000 Litres

Engine : Mitsubishi 6D16

Generator : 30KVA, Emergency 7500watt

Navigations : AIS, Radar, Compass, Gps, Map

Radio : SBB Radio, Vhf Radio

Safety : Liferaft, Life Jacket, Ring Bouy,

Fire extinguisher, First Aid Kit

Speedboat : Fiberglass with Engine

Yamaha 40 HP

Facility

Comfort cabin with AC
Daily Breakfast, Lunch, and Dinner
Coffee, Tea, Mineral Water, and Snack
Lazy Chair
Bean Bag
Sun Deck
Life Jacket
Snorkeling Gear
Dispenser

Cabin Information

Each of the 6 cabins are equipped with **air conditioning**,
2 private ensuite bathroom + 2 share bathroom capacity
20-22 Pax.

Cabin : Type Bed

1 : 4x Single Bunk Bed (for 4 Pax)

2 : 4x Single Bunk Bed (for 4 Pax)

3 : 4x Single Bunk Bed (for 4 Pax)

4 : 4x Single Bunk Bed (for 4 Pax)

5 : Queen Bed + Extra Queen Bed with Private Bathroom
(for 4 Pax)

6 : Queen Bed + Extra Queen Bed with Private Bathroom
(for 4 Pax)

Price List

Share Cabin

4 Pax



4x Single Bunkbed
Share Bathroom

Min 1 Pax **IDR 2.800.000 / Pax**

Master Ocean

2 - 4 Pax



Queen Bed + Extra Bed
Private Bathroom

Min 2 Pax **IDR 4.300.000 / Pax**
Add Pax **IDR 2.500.000 / Pax**



DETAIL PHOTOS
DOWNLOAD HERE

CLICK HERE



SUNDECK



DINING ROOM



ROYAL MASTER



TOILET



Boat Specification

Length : 25,76 Meters
Beam : 5.27 Meters
Cruising Speed : 7-10 Knot
Fresh Water Capacity : 5000 Litres
Fuel Capacity : 3000 Litres
Engine : Mitsubishi 6D16
Generator : 30KVA, Emergency 7500watt
Navigations : AIS, Radar, Compass, Gps, Map
Radio : SBB Radio,Vhf Radio
Safety : Lifaft, Life Jacket, Ring Bouy,
Fire extinguisher, First Aid Kit
Speedboat : Fiberglass with Enggine
Yamaha 15 HP

Facility

Comfort cabin with AC
Daily Breakfast, Lunch, and Dinner
Coffee, Tea, Mineral Water, and Snack
Bean Bag
Sun Deck
Life Jacket
Snorkeling Gear
Dispenser

Cabin Information

Each of the **7 cabins** are equipped with **air conditioning**, and **3 private ensuite bathroom + 2 share bathroom** capacity **22-24 Pax**

Cabin : Type Bed

- 1: 4x Single Bunk Bed (for 4 Pax)
- 2: 4x Single Bunk Bed (for 4 Pax)
- 3: 4x Single Bunk Bed (for 4 Pax)
- 4: 4x Single Bunk Bed (for 4 Pax)
- 5: Queen Bed + Extra Bed (for 2-3 Pax)
- 6: Queen Bed + Extra Bed (for 2-3 Pax)
- 7: Queen Bed + Extra Bed (for 2-3 Pax)

Price List

Share Cabin

▲ 4 Pax



- 4x Single Bunkbed
- Private Bathroom

† Min 1 Pax **IDR 2.800.000 / Pax**

Master Ocean

▲ 2-3 Pax



- Queen Bed + Extra Bed
- Private Bathroom

† Min 2 Pax **IDR 4.300.000 / Pax**
† Add Pax **IDR 2.500.000 / Pax**

Royal Master

▲ 2-3 Pax



- Queen Bed + Extra Bed
- Private Balcony
- Private Bathroom

† Min 2 Pax **IDR 4.800.000 / Pax**
† Add Pax **IDR 2.500.000 / Pax**



DETAIL PHOTOS
DOWNLOAD HERE

CLICK HERE



SUNDECK



DINING ROOM



ROYAL MASTER



TOILET

Boat Specification

Length : 22 Meters
Beam : 4,4 Meters
Cruising Speed : 7-10 Knot
Fresh Water Capacity : 5000 Litres
Fuel Capacity : 3000 Litres
Engine : Mitsubishi 6D16
Generator : 30KVA, Emergency 7500watt
Navigations : AIS, Radar, Compass, Gps, Map
Radio : SBB Radio,Vhf Radio
Safety : Liferaft, Life Jacket, Ring Bouy,
Fire extinguisher, First Aid Kit
Speedboat : Fibergalss with Enggine
Yamaha 15 HP

Facility

Comfort cabin with AC
Daily Breakfast, Lunch, and Dinner
Coffee, Tea, Mineral Water, and Snack
Bean Bag
Sofa
Life Jacket
Snorkeling Gear
Dispenser
Bluetooth Sound System
Fridge
Towel

Cabin Information

Each of the 5 cabins are equipped with air conditioning, and 3 private ensuite bathroom + 1 share bathroom capacity 12 Pax

Cabin : Type Bed

- 1: Queen Bed (for 2 Pax, Private Bathroom)
- 2: Queen Bed (for 2 Pax, Private Bathroom)
- 3: Queen Bed (for 2 Pax, Share Bathroom)
- 4: Queen Bed (for 2 Pax, Share Bathroom)
- 5: 2x Queen Bed (for 2-4 Pax, Private Bathroom)

Price List

Share Cabin

2-4 Pax



2x Queen Bed
Private Bathroom

Min 2 Pax IDR 2.800.000 / Pax

Family Cabin

2-4 Pax



2x Queen Bed
Private Bathroom

Min 2 Pax IDR 3.300.000 / Pax
Add Pax IDR 2.500.000 / Pax

Capsule Cabin

2 Pax

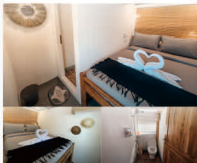


Queen Bed
Share Bathroom

Min 2 Pax IDR 3.300.000 / Pax

Flores Cabin

2 Pax



Queen Bed
Private Bathroom

Min 2 Pax IDR 3.800.000 / Pax

Master Ocean

2 Pax



Queen Bed
Private Bathroom

Min 2 Pax IDR 4.200.000 / Pax



YUKAI

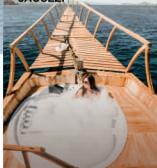


DETAIL PHOTOS
DOWNLOAD HERE

[CLICK HERE](#)



JACUZZI



DINING ROOM



SUNDECK



TOILET



Boat Specification

Length : 22 Meters

Beam : 4,2 Meters

Cruising Speed : 7-10 Knot

Fresh Water Capacity : 5000 Litres

Fuel Capacity : 3000 Litres

Engine : Mitsubishi 6D 16

Generator : 30Kva, Emergency 7500watt

Navigations : Compass, Radar, AIS, Gps, Map

Radio : VHF Radio

Safety : Life Raft, Life Jacket, Ring Bouy, Fire

Extinguisher, First Aid Kit

Speedboat : 6 Meter with Engine Yamaha 15 HP

Facility

Comfort cabin with AC

Large Outdoor area

Daily Breakfast, Lunch, and Dinner

Coffee, Tea, Mineral Water, and Snack

Lazy Bean Bag

Life Jacket

Snorkeling gear

TV

Karaoke Set

Bluetooth Sound System

Refrigerator

Dispenser

Jacuzzi

Cabin Information

Each of the 6 cabins are equipped with **air conditioning, private ensuite bathroom + hot water** capacity 12 Person

Cabin : Type Bed

1 : King Bed (for 2 Pax, private bathroom)

2 : King Bed (for 2 Pax, private bathroom)

3 : Queen Bed (for 2 Pax, private bathroom)

4 : Queen Bed (for 2 Pax, private bathroom)

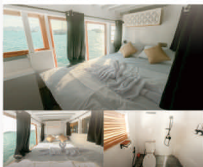
5 : Queen Bed (for 2 Pax, private bathroom)

6 : Queen Bed (for 2 Pax, Private Bathroom)

Price List

Deluxe Cabin

2 Pax



Queen Bed

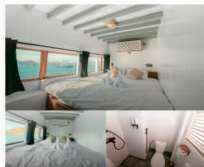
Private Bathroom

Min 2 Pax

IDR 4.300.000 / Pax

Signature Cabin

2 Pax



King Bed

Private Bathroom

Min 2 Pax

IDR 4.600.000 / Pax

[DETAIL PHOTOS
DOWNLOAD HERE](#)[CLICK HERE](#)

JACUZZI



DINING ROOM



OUTDOOR AREA



BAR



Boat Specification

Length : 22 Meters

Beam : 4.5 Meters

Cruising Speed : 7-10 Knot

Fresh Water Capacity : 6000 Litres

Fuel Capacity : 3000 Litres

Engine : Mitsubishi 6D 16

Generator : 2x Generator Sg75000 & genset 8kVa

Navigations : Compass, Radar, AIS, Gps, Map

Radio : VHF Radio

Safety : Life Raft, Life Jacket, Ring Bouy, Fire

Extinguisher, First Aid Kit

Speedboat : 6 Meter with Engine Yamaha 15 HP

Facility

Comfort cabin with AC,
Large Outdoor and Indoor area
Daily Breakfast, Lunch, and Dinner
Coffee, Tea, Mineral Water, and Snack
Lazy Bean Bag
Life Jacket
Snorkeling gear
Bluetooth Sound System
Refrigerator
Dispenser.
Jacuzzi

Cabin Information

Each of the 7 cabins are equipped with **air conditioning**,
private ensuite bathroom capacity 14 Pax.

Cabin : Type Bed

- 1 : Queen Bed (for 2 Pax, private bathroom)
- 2 : Queen Bed (for 2 Pax, private bathroom)
- 3 : Queen Bed (for 2 Pax, private bathroom)
- 4 : Queen Bed (for 2 Pax, private bathroom)
- 5 : Queen Bed (for 2 Pax, private bathroom)
- 6 : Queen Bed (for 2 Pax, Private Bathroom)
- 7 : Queen Bed (for 2 Pax, Private Bathroom)

Price List

Superior Cabin

▲ 2 Pax



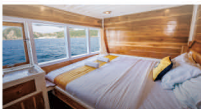
🛏 Queenbed

🚿 Private Bathroom

⌚ Min 2 Pax **IDR 4.000.000 / Pax**

Full Ocean

▲ 2 Pax



🛏 QueenBed

🚿 Private Bathroom

⌚ Min 2 Pax **IDR 5.000.000 / Pax**

[DETAIL PHOTOS
DOWNLOAD HERE](#)[CLICK HERE](#)

JACUZZI



DINING ROOM



OUTDOOR AREA



SUNDECK



Boat Specification

Lenght : 21 Meter

Beam : 5 Meter

Cruising Speed : 7-10 Knot

Fresh Water Capacity : 8.000 Liters

Fuel Capacity : 5.000 Liters

Engine : Mitsubishi 8D C9 Cylinder

Generator : 30Kva, Emergency 7500watt

Navigations : Compass, Garmin GPS, AIS, Map

Radio : SBB Radio, VHF Radio

Speedboat : 1 unit Fiberglass with

Engine Yamaha 15 HP

Safety : Life Raft, Life Jacket, Ring Buoy,

Fire Extinguisher, First Aid Kit

Total Crew : 6 Crew

Facility

Cabin A/C

Snorkeling Gears

Full Board Meals

Free Flow Mineral Water,

Tea, and Coffee

Bean Bag

Large Area Sun Deck

Indoor Dining Area

6 Private ensuite bathrooms

Large Outdoor Area

Bluetooth Sound System

Life Jacket

Dispenser

Fridge

Jacuzzi

Cabin Information

Each of the 6 cabins are equipped with air conditioning, private ensuite bathroom capacity 12-13 Pax.

Cabin : Type Bed

1 : Queen Bed (for 2 Pax, private bathroom)

2 : Queen Bed (for 2 Pax, private bathroom)

3 : Queen Bed (for 2 Pax, private bathroom)

4 : Queen Bed (for 2 Pax, private bathroom)

5 : Queen Bed (for 2 Pax, private bathroom)

6 : Queen Bed + Extra Single Bed (for 2-3 Pax, Private Bathroom)

Price List

Superior Cabin

2 Pax



Queenbed

Private Bathroom

Min 2 Pax **IDR 4.000.000 / Pax**

Full Ocean

2 Pax



QueenBed

Private Bathroom

Min 2 Pax **IDR 5.000.000 / Pax**

Master Ocean

2-3 Pax



QueenBed + Extra Single Bed

Private Bathroom

Min 2 Pax **IDR 5.700.000 / Pax**

Add Pax **IDR 3.500.000 / Pax**



DETAIL PHOTOS
DOWNLOAD HERE

CLICK HERE

INDOOR
DINING ROOM

OUTDOOR
DINING ROOM

SUNDECK

INTERIOR

Boat Specification

Length : 27 Meters
Beam : 5.5 Meters
Cruising Speed : 7-10 Knot
Fresh Water Capacity : 5000 Litres
Fuel Capacity : 3000 Litres
Engine : Yanmar 6 Cylinder TY 160
Generator : 30Kva, Emergency 7500watt
Navigations : Compass, Radar, AIS, Gps, Map
Radio : VHF Radio
Safety : Life Raft, Life Jacket, Ring Bouy, Fire Extinguisher, First Aid Kit
Speedboat : 6 Meter with Engine Yamaha 15 HP

Facility

Comfort cabin with AC,
Large Outdoor area
Daily Breakfast, Lunch, and Dinner
Coffee, Tea, Mineral Water, and Snack
Lazy Bean Bag
Life Jacket
Snorkeling gear
Bluetooth Sound System
Refrigerator
Dispenser.

Cabin Information

Each of the 6 cabins are equipped with air conditioning, private ensuite bathroom capacity 14-16 Pax.

Cabin : Type Bed

- 1 : 2x Queen Bed (for 2-4 Pax, private bathroom)
- 2 : Queen Bed (for 2 Pax, private bathroom)
- 3 : Queen Bed (for 2 Pax, private bathroom)
- 4 : Queen Bed (for 2 Pax, private bathroom)
- 5 : Queen Bed + Extra Single Bed (for 2-3 Pax, private bathroom)
- 6 : Queen Bed + Extra Single Bed (for 2-3 Pax, private bathroom)

Price List

Superior Family Cabin 2-4 Pax



- 2x Queenbed
- Private Bathroom

Min 2 Pax **IDR 5.000.000 / Pax**
Add Pax **IDR 3.500.000 / Pax**

Superior Cabin 2 Pax



- Queenbed
- Private Bathroom

Min 2 Pax **IDR 4.600.000 / Pax**

Full Ocean 2 Pax



- QueenBed
- Private Bathroom

Min 2 Pax **IDR 5.000.000 / Pax**

Deluxe Full Ocean 2-3 Pax



- QueenBed + Extra Single Bed
- Private Bathroom

Min 2 Pax **IDR 5.400.000 / Pax**
Add Pax **IDR 3.500.000 / Pax**

Master Ocean 2-3 Pax



- QueenBed + Extra Single Bed
- Private Bathroom

Min 2 Pax **IDR 5.700.000 / Pax**
Add Pax **IDR 3.500.000 / Pax**



DETAIL PHOTOS
DOWNLOAD HERE

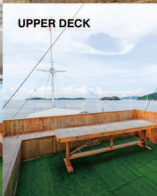
CLICK HERE



DINING ROOM



UPPER DECK



CABIN INTERIOR



OCEAN VIEW



Boat Specification

Lenght : 32 Meter
Beam : 5,6 Meter
Cruising Speed : 8-14 Knot
Fresh Water Capacity : 7.000 Liters
Fuel Capacity : 3.000 Liters
Engine : Mitsubishi 6D 22 Cylinder
Generator : Double Psl20
Navigations : Compass, Garmin GPS, AIS, Map
Radio : SBB Radio, VHF Radio
Speedboat : 1 unit Fiberglass with
Engine Yamaha 15 HP
Safety : Life Raft, Life Jacket, Ring Buoy,
Fire Extinguisher, First Aid Kit
Total Crew : 5 Crew

Facility

Cabin A/C
Snorkeling Gears
Full Board Meals
Free Flow Mineral Water,
Tea, and Coffee
Bean Bag
Large Area Sun Deck
Indoor Dining Area
8 Private ensuite bathrooms
Large Outdoor Area
Bluetooth Sound System
Life Jacket
Dispenser
Fridge
TV
Karaoke Set

Cabin Information

Each of the 8 cabins are equipped with air conditioning,
private ensuite bathroom capacity 16-24 Person

Cabin : Type Bed

- 1: Queen Bed + Extra Queen Bed (For 2 - 3 Person , private bathroom)
- 2: Queen Bed + Extra Queen Bed (For 2 - 3 Person , private bathroom)
- 3: Queen Bed + Extra Single Bed (For 2 - 3 Person , private bathroom)
- 4: Queen Bed + Extra Single Bed (For 2 - 3 Person , private bathroom)
- 5: Queen Bed + Extra Single Bed (For 2 - 3 Person , private bathroom)
- 6: Queen Bed + Extra Single Bed (For 2 - 3 Person , private bathroom)
- 7: Queen Bed + Extra Single Bed (For 2 - 3 Person , private bathroom)
- 8: Queen Bed + Extra Single Bed (For 2 - 3 Person , private bathroom)

Price List

Deluxe Cabin

▲ 2-3 Pax



🛏 Queenbed + Extra Single Bed
🚿 Private Bathroom

⏸ Min 2 Pax **IDR 4.950.000 / Pax**
⬆ Add Pax **IDR 3.500.000 / Pax**

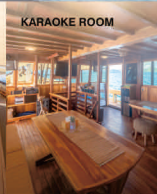
Master Cabin

▲ 2-3 Pax



🛏 QueenBed + Extra Queen Bed
🚿 Private Bathroom

⏸ Min 2 Pax **IDR 5.500.000 / Pax**
⬆ Add Pax **IDR 3.500.000 / Pax**

[DETAIL PHOTOS
DOWNLOAD HERE](#)[CLICK HERE](#)**JACUZZI****DINING ROOM****KARAOKE ROOM****SUNDECK**

Boat Specification

Length : 30 Meters
Beam : 7.2 Meters
Cruising Speed : 7-11 Knot
Fresh Water Capacity : 8.000 Litres
Fuel Capacity : 3000 Litres
Engine : Mitsubishi 6D22
Generator : PS120-30kva, Ps120-22kva
Navigations : Compass, Radar, AIS, Gps, Map
Radio : VHF Radio
Safety : Life Raft, Life Jacket, Ring Bouy, Fire
Extinguisher, First Aid Kit
Speedboat : 6 Meter with Engine
Yamaha 40 HP

Facility

Full meals on board
AC cabin
Large Sundeck Area
Sun chair, Bean Bag
Hot & cold water
Snorkeling Equipment
Karaoke set, TV
Bluetooth Sound System
Indoor & Outdoor Dining room
Canoe
Fridge
Dispenser
Jacuzzi.

Cabin Information

Each of the 8 cabins are equipped with air conditioning,
8 private ensuite bathrooms + hot water capacity 21-25 Pax.

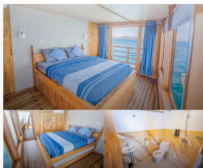
Cabin : Type Bed

- 1: Queen Bed + Single Bed (for 3 Pax, private bathroom)
- 2: Queen Bed + Single Bed (for 3 Pax, private bathroom)
- 3: Queen Bed + Single Bed (for 3 Pax, private bathroom)
- 4: Queen Bed + Single Bed (for 3 Pax, private bathroom)
- 5: Queen Bed + Single Bed (for 3 Pax, private bathroom)
- 6: Queen Bed + 2 Single Extra Bed (for 4 Pax, private bathroom)
- 7: Queen Bed + 1 Single Extra Bed (for 4 Pax, private bathroom)
- 8: Queen Bed + 1 Single Extra Bed (for 4 Pax, private bathroom)

Price List

Superior Cabin**▲ 2-3 Pax**

🛏 Queenbed + SingleBed
🚿 Private Bathroom

⏸ Min 2 Pax**IDR 4.750.000 / Pax****⬆ Add Pax****IDR 4.250.000 / Pax****Master Ocean****▲ 2-3 Pax**

🛏 QueenBed + Extra Bed
🚿 Private Balcony
🚿 Private Bathroom

⏸ Min 2 Pax**IDR 6.750.000 / Pax****⬆ Add Pax****IDR 4.250.000 / Pax****Family Ocean****▲ 2-4 Pax**

🛏 QueenBed + 2 Extra Bed
🚿 Private Bathroom

⏸ Min 2 Pax**IDR 6.750.000 / Pax****⬆ Add Pax****IDR 4.250.000 / Pax**

[CLICK HERE](#)

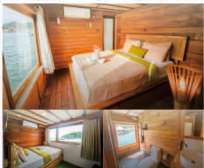


Cabin Information

- Accommodation (Live on board)
- Full meals on board
- Comfortable restaurant area
- AC cabin
- Front sun deck area
- Top sun deck area
- Sun chair, Bean Bag
- Hot & cold water
- Snorkeling Equipment
- Karaoke set
- Bluetooth Sound System
- TV
- Canoe
- Fridge
- Dispenser,
- Large Jacuzzi
- Bar.

- 1: Queen Bed + 2 Extra Bed (for 2-4 Pax, private bathroom, Balcony and jacuzzi)
- 2: Queen Bed + Extra Bed (for 2-3 Pax, private bathroom)
- 3: Queen Bed + Extra Bed (for 2-3 Pax, private bathroom)
- 4: Queen Bed + Extra Bed (for 2-3 Pax, private bathroom)
- 5: Queen Bed + Extra Bed (for 2-3 Pax, private bathroom)
- 6: Queen Bed + Extra Bed (for 2-3 Pax, private bathroom)
- 7: Queen Bed + Extra Bed (for 2-3 Pax, private bathroom)
- 8: Queen Bed + Extra Bed (for 2-3 Pax, private bathroom)

2-3 Pax



 QueenBed + Extra Bed
 Private Bathroom

2 Pax **IDR 7.000.000 / Pax**
 3 Pax **IDR 4.250.000 / Pax**

Min 2 Pax **IDR 9.250.000 / Pax**
Add Pax **IDR 4.250.000 / Pax**



DETAIL PHOTOS
DOWNLOAD HERE

CLICK HERE



JACUZZI



DINING ROOM



SUNDECK



TOILET

Boat Specification

Length : 38 Meters
Beam : 6,8 Meters
Crew: 9 Person Crew
Cruising Speed : 7-11 Knot
Fresh Water Capacity : 13.000 Litres
Fuel Capacity : 8000 Litres
Engine : Mitsubishi 8D C99
Generator : Double PS120
Navigations : Compass, Gps, Ais, Map
Radio : SBB Radio,Vhf Radio, Handy Talky
Safety Equipment : Life Raft for 25 person,
30 life jacket, 2 fire exrtinguisher, first aid

Speedboat : 1 unit fibergalss with Engine
1x Yamaha 40 HP

Facility

Full meals on board
AC cabin
Large Sundeck Area
Sun chair
Hot & cold water
Snorkeling Equipment
Bluetooth Sound System
Indoor Dining room
Fridge
Dispenser
Jacuzzi
Paddle Board

Cabin Information

Each of the 8 cabins are equipped with air conditioning,
8 private ensuite bathrooms + hot water capacity 21-25 Pax.

Cabin : Type Bed

- LOWER DECK

- 1: Queen Bed (for 2 Pax, private bathroom)
- 2: Queen Bed (for 2 Pax, private bathroom)
- 3: Queen Bed (for 2 Pax, private bathroom)
- 4: Queen Bed (for 2 Pax, private bathroom)

- MAIN DECK

- 5: Queen Bed + Single Bed (for 2-3 Pax, private bathroom, balcony, jacuzzi)
- 6: Queen Bed + Single Bed (for 2-3 Pax, private bathroom, balcony, jacuzzi)

- MIDDLE DECK

- 7: Queen Bed + Extra 2x Single Bed (for 2-4 Pax, private bathroom, balcony,jacuzzi)
- 8: Queen Bed + Extra 2x Single Bed (for 2-4 Pax, private bathroom, balcony,jacuzzi)

Price List

Superior Cabin

2 Pax



- Queenbed
- Private Bathroom

Min 2 Pax **IDR 5.750.000 / Pax**

Master Ocean

2-3 Pax



- QueenBed + Extra Single Bed
- Private Balcony
- Private Bathroom + Jacuzzi

Min 2 Pax **IDR 9.250.000 / Pax**
Add Pax **IDR 4.250.000 / Pax**

Royal Master

2-4 Pax



- QueenBed + 2 Extra Single Bed
- Private Balcony
- Private Bathroom + Jacuzzi

Min 2 Pax **IDR 10.500.000/Pax**
Add Pax **IDR 4.250.000 / Pax**



DETAIL PHOTOS
DOWNLOAD HERE

CLICK HERE



Boat Specification

Length : 38 Meters
 Beam : 9.5 Meters
 Crew: 12 Person Crew
 Cruising Speed : 8-11 Knot
 Fresh Water Capacity : 25,000 Litres
 Fuel Capacity : 3000 Litres
 Engine : Mitsubishi 6D22 & RF 10
 Generator : 30 Kva, Emergency 8000 Watt
 Navigations : Compass, Gps, Map
 Radio : SBB Radio,Vhf Radio, Handy Talky
 Safety Equipment : Life Raft for 25 person,
 30 life jacket, 2 fire exringuisher, first aid

Speedboat : 2 unit fibergalss with Enggine
 2x Yamaha 40 HP and Yamaha 40 HP

Facility





Accomodation (Live on board)
 Full meals on board & Mineral drink
 Comfortable restaurant area
 AC cabin
 Large Sundeck Area
 Sun chair
 Hot & cold water
 Bean Bag
 24 hours coffee or tea on boat
 Fridge
 Snorkeling Equipment
 Karaoke set
 Daily Housekeeping
 Indoor & Outdoor Dining room
 Floties
 Canoe.

Cabin Information

Each of the 10 cabins are equipped with air conditioning,
 10 private ensuite bathroom and hot shower capacity 20-30 Person

- Cabin : Type Bed
- 1: Queen Bed + Extra Bed (for 2-3 Person, private bathroom)
 - 2: Queen Bed + Extra Bed (for 2-3 Person, private bathroom)
 - 3: Queen Bed + Extra Bed (for 2-3 Person, private bathroom)
 - 4: Queen Bed + Extra Bed (for 2-3 Person, private bathroom)
 - 5: Queen Bed + Extra Bed (for 2-3 Person, private bathroom)
 - 6: Queen Bed + Extra Bed (for 2-3 Person, private bathroom)
 - 7: 4x Single Bunk Bed (for 2-3 Person, private bathroom)
 - 8: 4x Single Bunk Bed (for 2-3 Person, private bathroom)
 - 9: 4x Single Bunk Bed (for 2-3 Person, private bathroom)
 - 10: 4x Single Bunk Bed (for 2-3 Person, private bathroom)

Price List

Ocean Twin	2-3 Pax	Ocean Double	2-3 Pax
 		 	
<div> <div>4x Single Bunk Bed</div> <div>Private Bathroom</div> <div>Min. 2 pax</div> <div>Min 2 Pax</div> <div>Add Pax</div> </div>	<div> <div>IDR 5.250.000 / Pax</div> <div>IDR 4.250.000 / Pax</div> </div>	<div> <div>Queen Bed + Extra Bed</div> <div>Private Bathroom</div> <div>Min. 2 pax</div> <div>Min 2 Pax</div> <div>Add Pax</div> </div>	<div> <div>IDR 6.250.000 / Pax</div> <div>IDR 4.250.000 / Pax</div> </div>



DETAIL PHOTOS
DOWNLOAD HERE

CLICK HERE



RESTAURANT



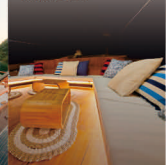
SUNDECK



UPPER DECK



MAIN DECK



Boat Specification

Length : 34 Meters
Beam : 6.5 Meters
Cruising Speed : 7-10 Knot
Fresh Water Capacity : 8000 Litres
Fuel Capacity : 3000 Litres
Engine : Mitsubishi 6D22
Generator : 24 hours 2 generators 18kva and 11 kva
Navigations : Compass, Radar, AIS, Gps, Map
Radio : VHF Radio
Safety : Life Raft, Life Jacket, Ring Bouy, Fire Extinguisher, First Aid Kit
Speedboat : 6 Meter with Engine
Yamaha 40 HP

Facility

Mineral drink
Accommodation (Live on board)
Full meals on board
Comfortable Dining Indoor area
AC cabin, Front sun deck area
Top sun deck area
Sun chair
Hot & cold water
Bean Bag
Private room with balcony
24 hours coffee or tea on boat
Snorkeling Equipment
Karaoke set
Bluetooth Sound System

Cabin Information

Each of the 7 cabins are equipped with air conditioning, 7 private ensuite bathroom capacity 22-25 Pax.

Cabin : Type Bed

- 1: Queen Bed + Extra Bed (for 2-3 Pax, private bathroom)
- 2: Queen Bed + Extra Bed (for 2-3 Pax, private bathroom)
- 3: Queen Bed + Extra Bed (for 2-3 Pax, private bathroom)
- 4: 2x Queen Bed (for 4 Pax, private bathroom)
- 5: Queen Bed (for 2 Pax, private bathroom)
- 6: Queen Bed (for 2 Pax, private bathroom)
- 7: 4x Queen Bed (for 8 Pax, private bathroom)

Price List

Share Cabin

▲ 8 Pax



- 4x QueenBed
- Share Bathroom

Superior Cabin

▲ 2 Pax



- QueenBed
- Private Bathroom

Family Ocean

▲ 4 Pax



- 2x QueenBed
- Private Bathroom

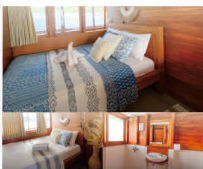
Min 2 Pax **IDR 3.750.000 / Pax**

Min 2 Pax **IDR 5.000.000 / Pax**

Min 4 Pax **IDR 5.000.000 / Pax**

Deluxe Ocean

▲ 2-3 Pax



- QueenBed + Extra Bed
- Private Bathroom

Min 2 Pax **IDR 6.500.000 / Pax**
Add Pax **IDR 4.250.000 / Pax**

Master Ocean

▲ 2-3 Pax



- QueenBed + Extra Bed
- Private Bathroom

Min 2 Pax **IDR 7.000.000 / Pax**
Add Pax **IDR 4.250.000 / Pax**