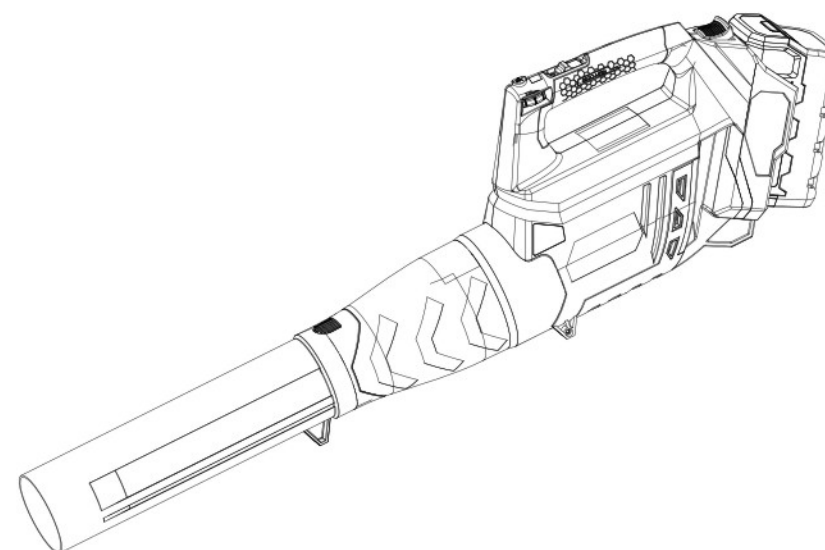




SUABL5605

56V Lithium Blower  
Original instruction



SENCI GENERAL TRADING LLC  
Shop #13, Flora Hotel Building, Salem Plaza,  
Baniyas Square, Deira, Dubai, UAE  
TEL:+971 42955800  
[www.aipowerglobal.com](http://www.aipowerglobal.com)

**Important!**

It is essential that you read the instructions in this manual before operating this machine.

Subject to technical modification.





Fig. 1

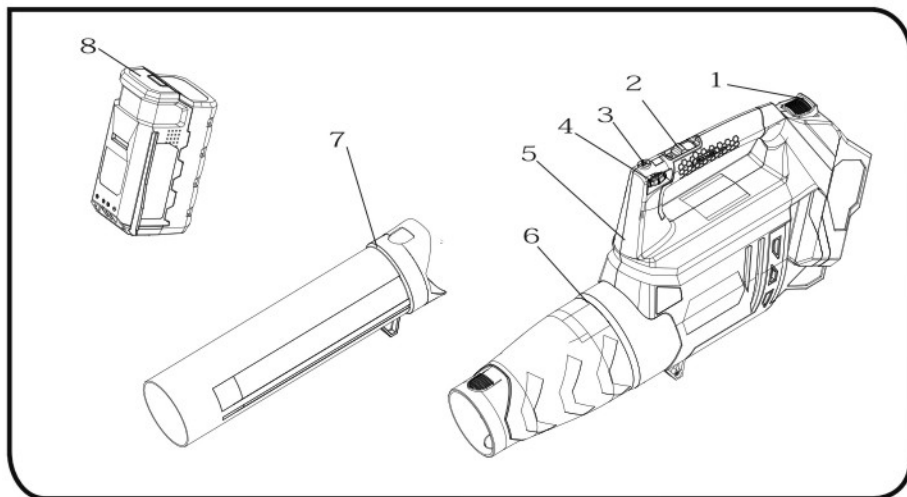


Fig. 2

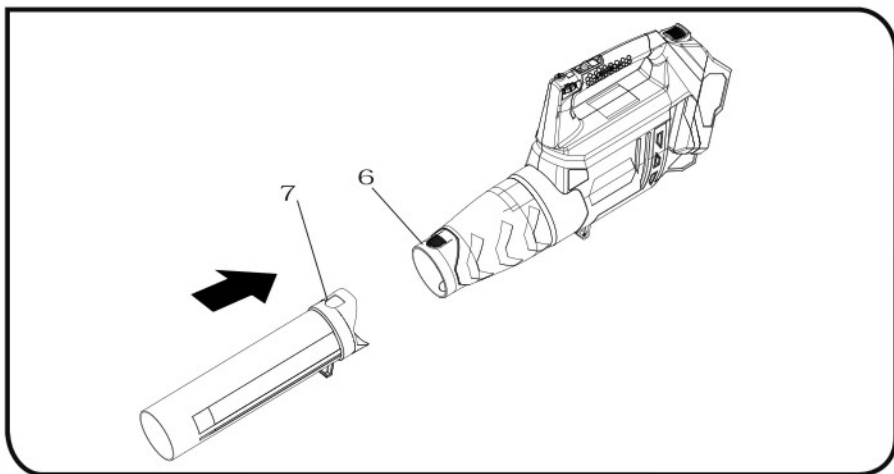




Fig. 3

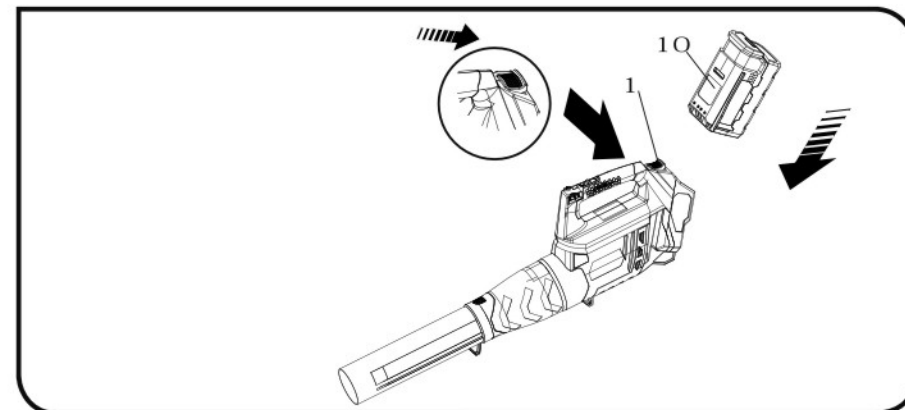


Fig. 4

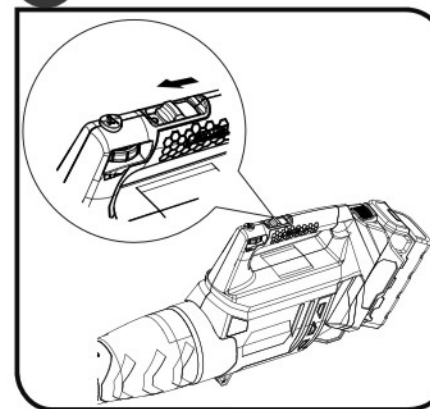


Fig. 5





Fig. 6

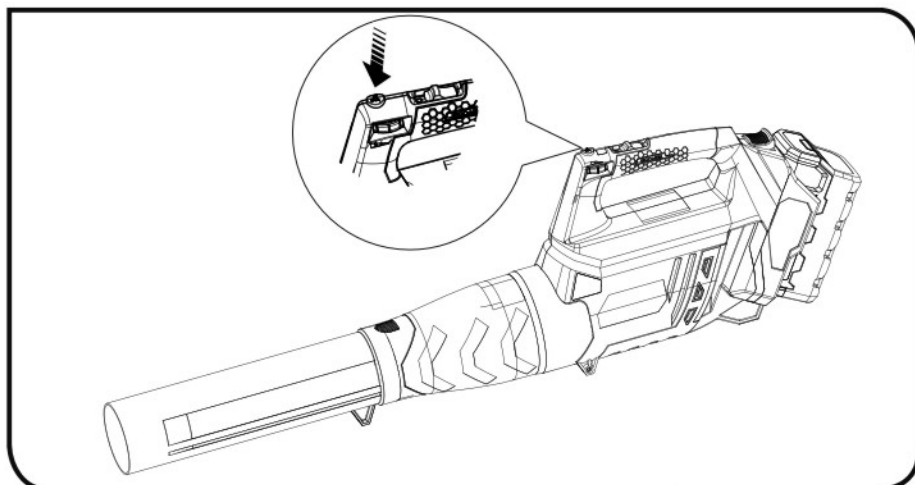
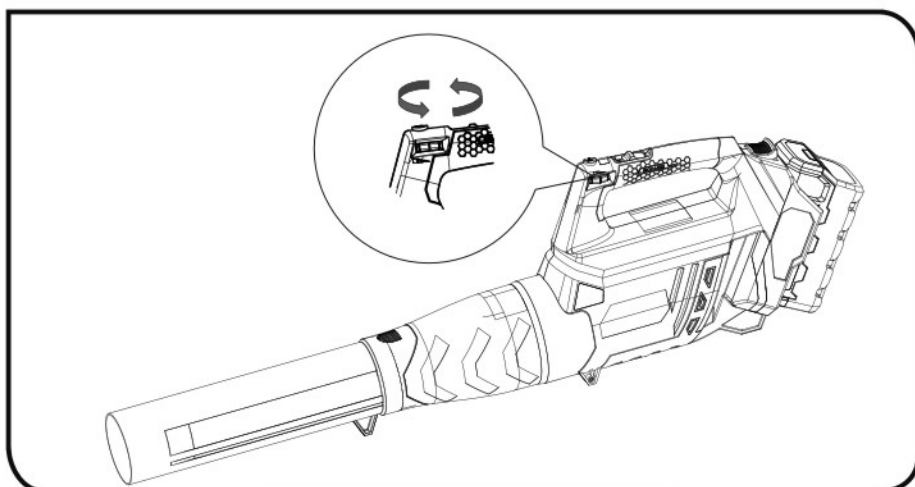


Fig. 7



## PRODUCT SPECIFICATIONS

### Cordless Blower

Model	SUABL5605
Motor	58 V
Air Velocity	45 m/s
Air Volume	850 m <sup>3</sup> /h
Weight (without battery)	2.7 kg
Battery Pack	SUABT5640
Charger	SUACH5602
Compatible battery packs	SUABT5620 SUABT5640
Compatible charger	SUACH5602

## Safety

### SYMBOL

Some of the following symbols may be used on this product. Please study them and learn their meaning. Proper interpretation of these symbols will allow you to operate the product better and safer.



Safety alert



Please read the instructions carefully before starting the machine.



Do not expose to rain or damp conditions.



Wear ear and eye protection.



Beware of thrown or flying objects. Keep all bystanders at least 15 m away.



Rotating Fans. Keep hands and feet out of the openings while the machine is running.



Waste electrical products should not be disposed of with household waste. Please recycle where facilities exist. Check with your Local Authority or retailer for recycling advice.

The following signal words and meanings are intended to explain the levels of risk associated with this product.



**DANGER** Indicates an imminently hazardous situation, which, if not avoided, will result in death or serious injury.



**WARNING** Indicates a potentially hazardous situation, which, if not avoided, could result in death or serious injury. This appliance can be used by children aged from 8 years and above and persons with reduced physical, sensory or mental capabilities or lack of experience and knowledge if they have been given supervision or instruction concerning use of the appliance in a safe way and understand the hazards involved. Children shall not play with the appliance. Cleaning and user maintenance shall not be made by children without supervision.



**CAUTION** (Without Safety Alert Symbol) Indicates a situation that may result in property damage.



**CAUTION** Indicates a potentially hazardous situation, which, if not avoided, may result in minor or moderate injury.

## Safety

Safety, performance, and dependability have been given top priority in the design of your cordless blower.

### INTENDED USE

You may use the product for clearing hard surfaces such as driveways and walkways. You can also use the product for keeping decks and driveways free from leaves and pine needles.

### RULES FOR SAFE OPERATION

Your blower has been engineered and manufactured to A-iPower high standard for dependability, ease of operation, and operator safety. When properly cared for, it will give you years of trouble-free performance. Thank you for buying a A-iPower product.

### GENERAL SAFETY WARNINGS

#### ⚠ WARNING

When using battery operated tools basic safety precautions should always be followed to reduce the risk of fire, leaking batteries, and personal injury, including the following.

Read all these instructions before operating this product and keep for future reference.

- Do not allow children or untrained individuals to use this unit.
- Wear heavy long trousers, non-slip safety footwear, and gloves.
- Never operate unit while bare foot or wearing open shoes.
- Do not wear loose clothing, or jewelry that might get entangled in this unit.
- Do not touch the fan when operating this unit.
- Keep all bystanders, children, and pets at least 15 m (50 feet) away. Remember that the operator or user is responsible for accidents occurring to bystanders, their property, as well as themselves.
- Check for damaged parts. Before further use of the appliance, any part that is damaged should be carefully checked to determine that it will operate properly and perform its intended function.
- Check for breakage of parts and any other conditions that may affect its operation. A guard or other part that is damaged should be properly repaired or replaced by an authorized service center. Following this rule will reduce the risk of shock, fire, or serious injury.
- Do not force the product. Use the correct tool for your application. The correct tool will do the job better and safer at the rate for which it is designed.
- Do not over-reach. Keep proper footing and balance at all times. Proper footing and balance enables better control of the product in unexpected situations.

#### ⚠ WARNING

Use only the manufacturer replacement parts. Failure to do so may cause poor performance, possible injury and may void your warranty.

### BATTERY TOOL USE AND CARE

- Ensure the switch is in the off position before inserting battery pack. Inserting the battery pack into power tools that have the switch on invites accidents.
- Recharge only with the charger specified by the manufacturer. A charger that is suitable for one type of battery pack may create a risk of fire when used with another battery pack.
- Use power tools only with specifically designated battery packs. Use of any other battery packs may create a risk of injury and fire.
- When battery pack is not in use, keep it away from other metal objects like paper clips, coins, keys, nails, screws, or other small metal objects that can make a connection from one terminal to another. Shorting the battery terminals together may cause burns or a fire.
- Under abusive conditions, liquid may be ejected from the battery; avoid contact. If contact accidentally occurs, flush with water. If liquid contacts eyes, seek medical help. Liquid ejected from the battery may cause irritation or burns.



## Safety

Save these instructions, refer to them frequently and use them to instruct others who may use this unit. If you loan someone this unit, loan them these instructions also.

### ⚠ WARNING

Injuries may be caused, or aggravated, by prolonged use of a tool. When using any tool for prolonged periods, ensure you take regular breaks.

### ADDITIONAL SAFETY RULES

### ⚠ WARNING

The product is not intended for use by persons (including children) with reduced physical, sensory or mental capabilities, or lack of experience and knowledge.

Children should be supervised to ensure that they do not play with the product.

### TRANSPORTING LITHIUM BATTERIES

Transport the battery in accordance with local and national provisions and regulations.

Follow all special requirements on packaging and labelling when transporting batteries by a third party. Ensure that no batteries can come in contact with other batteries or conductive materials while in transport by protecting exposed connectors with insulating, non-conductive caps or tape. Do not transport batteries that are cracked or leaking. Check with the forwarding company for further advice.

### ⚠ WARNING

Not intended for use other than what's listed above.

### DESCRIPTION

1. Battery latch button
2. Trigger
3. Turbo button
4. Variable speed button
5. Housing
6. Tube latch
7. Blower tube
8. Battery pack

### KNOW YOUR BLOWER

See Figure 1.

The safe use of this product requires an understanding of the information on the blower and in this operator's manual as well as a knowledge of the project you are attempting. Before use of this product, familiarize yourself with all operating features and safety rules.

### BLOWER TUBE

The blower tube can be installed on the blower without using any tools.

### ASSEMBLY

### ⚠ WARNING

To prevent accidental starting that could cause serious personal injury, always remove the battery pack from the blower when assembling parts.

### ASSEMBLING THE BLOWER TUBE

See Figure 2.

- Slide blower tube over the blower housing outlet until the tube latch locks into place through the opening in the blower tube.

### OPERATION

### ⚠ WARNING

Do not allow familiarity with tools to make you careless. Remember that a careless fraction of a second is sufficient to inflict serious injury.

### INSTALLING BATTERY PACK

See Figure 3.

- Place the battery pack in the blower's battery port. Align the raised rib on the battery pack with the groove in the blower's battery port.
- Make sure the latch on bottom of the battery pack snaps in place and that battery pack is secured in the blower before beginning operation.

### ⚠ CAUTION

When placing battery pack in the blower, be sure the raised ribs on the battery pack align with the grooves in the top of the blower. Make sure the battery is fully seated, and it latches into place properly. Improper installation of the battery pack can cause damage to internal components.

### REMOVING BATTERY PACK

See Figure 3.

- Release the trigger to stop the blower.
- Press and hold the latch button at the bottom of the battery pack.
- Remove battery pack from the blower.

### STARTING /STOPPING THE BLOWER

See Figure 4.

- To start the blower, push the trigger.
- To stop the blower, release the trigger.

### ⚠ WARNING

Battery tools are always in operating condition. Therefore, operation trigger switch should always be in the OFF (released) position when not in use or carrying/moving the tool.

### OPERATING THE BLOWER

See Figure 5.

- To keep from scattering debris, blow around the outer edges of a debris pile. Never blow directly into the center of a pile.
- To reduce sound levels, limit the number of pieces of equipment used at any time.
- Use rakes and brooms to loosen debris before blowing. In dusty conditions, slightly dampen surfaces when water is available.
- Conserve water by using power blowers instead of hoses for many lawn and garden applications, including areas such as gutters, screens, patios, grills, porches, and gardens.
- Watch out for children, pets, open windows, or freshly washed cars, and blow debris safely away.
- After using blowers or other equipment, CLEAN UP! Dispose of debris properly.

See Figure 6.

- Pressing the turbo button, the blower can at Max. speed immediately. Unpressing the turbo, the speed normal

See Figure 7.

- Revolve the variable speed button can control the air velocity

### ⚠ WARNING

When servicing use only original manufacturer's replacement parts, accessories and attachments. Use of any other parts may create a hazard or cause product damage.

Avoid using solvents when cleaning plastic parts. Most plastics are susceptible to damage from various types of commercial solvents and may be damaged by their use. Use clean cloths to remove dirt, dust, oil, grease, etc.

## Safety

### ⚠ WARNING

Do not at any time let brake fluids, gasoline, petroleum based products, penetrating oils, etc. come in contact with plastic parts. They contain chemicals that can damage, weaken or destroy plastic.

### ⚠ WARNING

Do not attempt to modify this tool or create accessories not recommended for use with this tool. Any such alteration or modification is misuse and could result in a hazardous condition leading to possible serious personal injury.

### ⚠ WARNING

To avoid serious personal injury, always remove the battery pack from the tool when cleaning or performing any maintenance.

### STORING THE BLOWER

Clean the blower thoroughly before storing. Store the blower in a dry, well-ventilated place that is inaccessible to children. Keep away from corrosive agents such as garden chemicals and de-icing salts.

- Store and charge your batteries in a cool area. Temperatures above or below normal room temperature will shorten battery pack life.
- Never store batteries in a discharged condition. Wait for battery pack to cool and fully charge immediately.
- All batteries gradually lose their charge. The higher the temperature, the quicker they lose their charge. If you store your unit for long periods of time without using it, recharge the batteries every month or two. This practice will prolong battery pack life.

### ENVIRONMENTAL PROTECTION



Recycle raw materials instead of disposing of as waste. The machine, accessories and packaging should be sorted for environmental-friendly recycling.