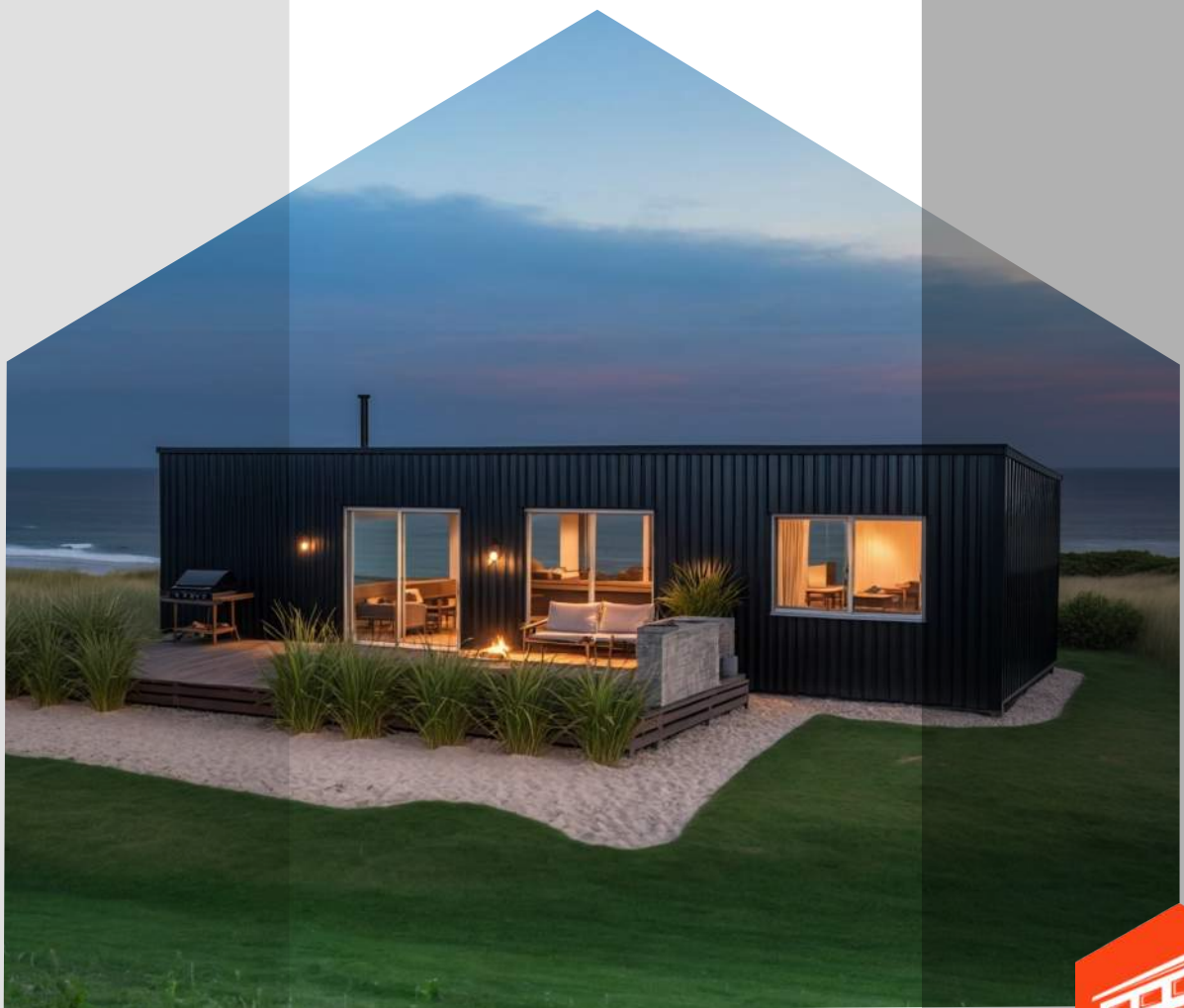


Jan 2026



Transportable Homes

Discover the perfect blend of quality, affordability and style. Our skilled tradespeople craft every home with precision, ensuring exceptional standards from start to finish.

With smart layouts and stunning finishes, even compact spaces transform into luxurious retreats. Designed for comfort and elegance, your Walls Build home is your personal sanctuary.



BUILD



027 472 6940

www.wallsbuild.co.nz
Office@wallsgroup.co.nz

At Walls Build, we understand that choosing a transportable home is a big decision. That's why we strive to create homes that are not only affordable but also tailored to meet the unique needs of our customers.

Walls Build is a dedicated branch of Walls Group, specialising in crafting high-quality transportable homes that offer affordability and flexibility without compromising on standards. As part of a larger organisation, Walls Build benefits from a deep well of expertise and resources, drawing on the strength of Walls Group's other divisions: Walls Frames, our in-house steel framing manufacturer, and Walls Finish, a leading provider of GIB supply, fix, stop, paint, Rondo, and insulation services.

With over 25 years of industry experience, Walls Finish has established itself as a reliable partner for builders throughout New Zealand, operating under a different name before rebranding to join the Walls Group family. This longevity speaks to our commitment to quality and customer satisfaction, values that now extend to every transportable home we build.

We carefully select only the most qualified tradespeople, including Licensed Building Practitioners (LBPs), certified electricians, plumbers, kitchen makers, and more. This ensures that every aspect of your transportable home, from construction to fit-out, is handled by experienced professionals who take pride in their work.

We're passionate about making transportable home living accessible to more people, offering innovative designs and superior craftsmanship that stand the test of time.

Trust Walls Build and the Walls Group to deliver a transportable home you'll be proud to call your own.

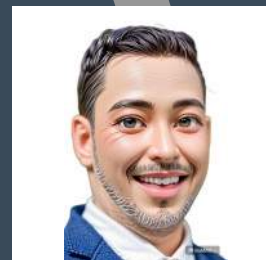


Steve - owner

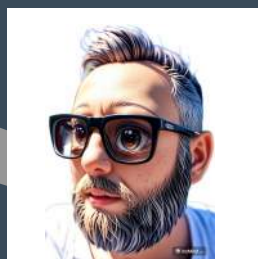


Anna - Admin

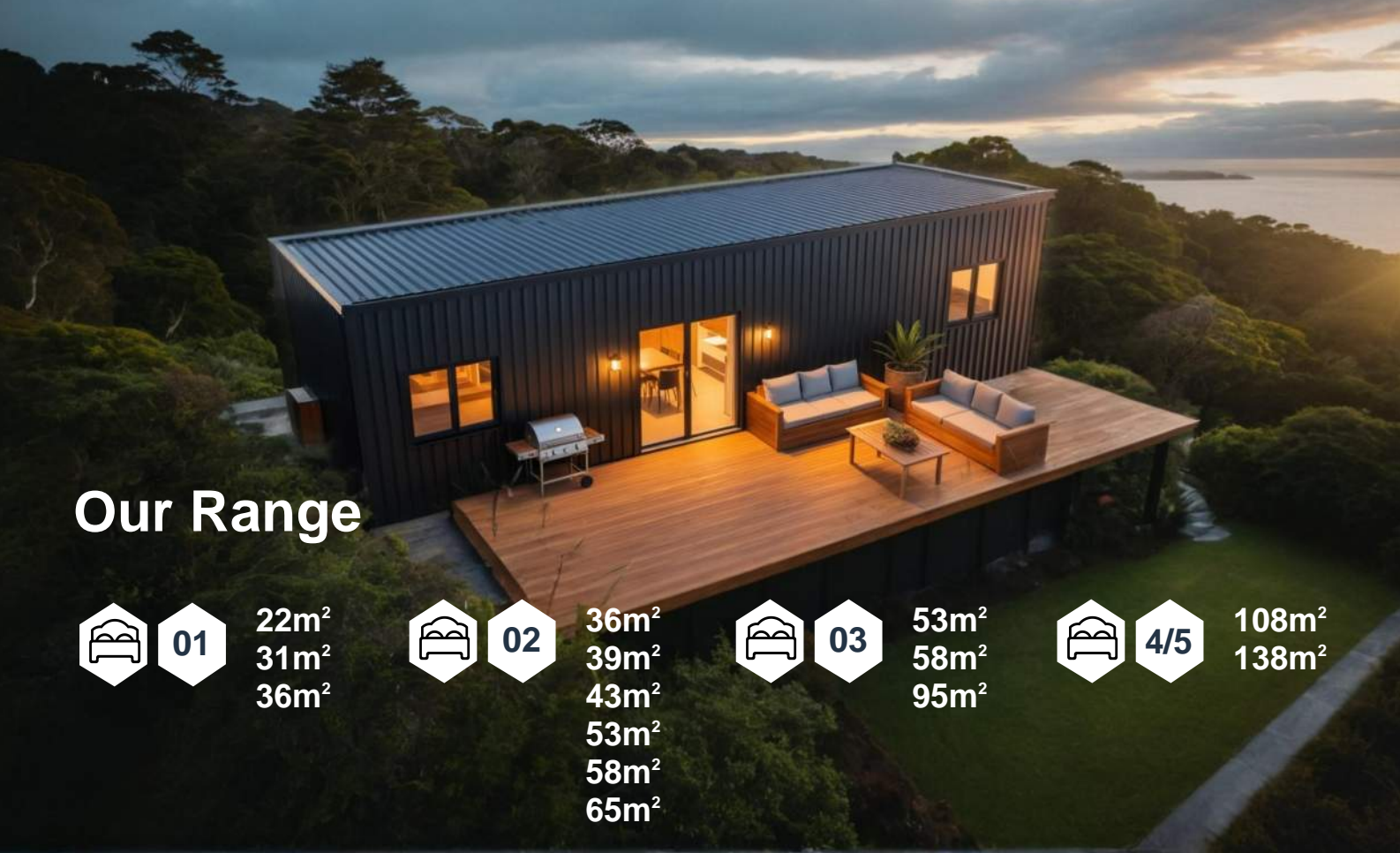
Meet the
Walls Group
team




Chris - Operations



Jono - Sales



Our Range

- | | | | | | | | | | | | |
|--|---|--|---|---|--|---|--|--|---|---|--|
|  |  | 22m ²
31m ²
36m ² |  |  | 36m ²
39m ²
43m ²
53m ²
58m ²
65m ² |  |  | 53m ²
58m ²
95m ² |  |  | 108m ²
138m ² |
|--|---|--|---|---|--|---|--|--|---|---|--|





BUILD

7.2 x 3m one bed: 21.6m²

Price \$94,500

Includes Council CCC - building only



Enclosure		Steel Frames Colour steel roof, Rondo Ceiling Battens, Gutter, Down Pipe, 20mm Thermal Break Board, Cavity battens, Floor insulation Polystyrene, Roof Insulation R3.6, Walls R2.2+0.26
Fit Out	Exterior Cladding	Colour Steel Cladding
	Windows	Frosted Window (600x800) x1, (Window 1200x1000) x2, Ranch Slider (1800x2000) x1
		Smoke Alarm, Fuse Box, Power Points x8, Lights x8, Exterior Lights x1, Gas Hot Water Callifont. No kitchen appliances, no wardrobes.
Finish	Lining	GIB Lining, Architraves 60mmx10, Skirting 90mmx10 Resene Internal Paint
	Kitchen	Engineered Stone Bench Top
	Flooring	SPC Plank Flooring
	Bathroom	Shower, Soft close toilet, Vanity 600mm Towel rail, Roll holder, Mirror above vanity, Extractor Fan

Optional upgrades

Heated Towel Rail	\$400
Cavity slider upgrade	\$400
Heat Pump 2.5KW	\$2,500
Heat Pump 3.5KW	\$3,000
Heat Pump 5KW	\$3,500
Bedroom carpet	\$450



BUILD

10.2 x 3m one bed: 30.6m²

Price \$114,500

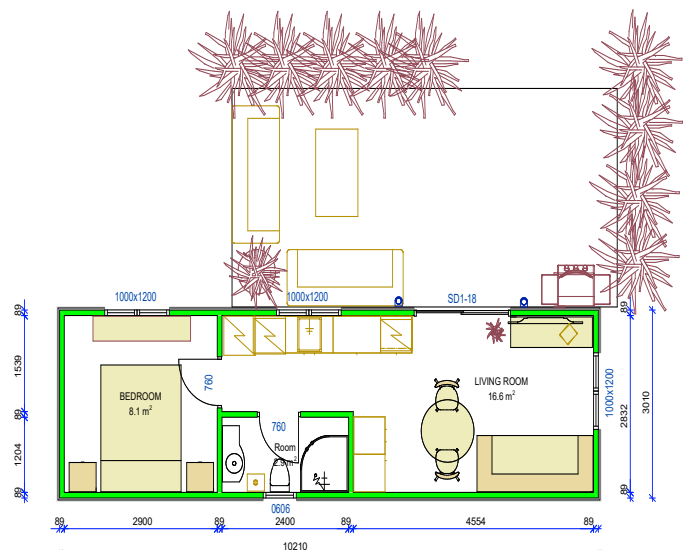
Includes Council CCC - building only



Enclosure		Steel Frames Colour steel roof, Rondo Ceiling Battens, Gutter, Down Pipe, 20mm Thermal Break Board, Cavity battens, Floor insulation Polystyrene, Roof Insulation R3.6, Walls R2.2+0.26
Fit Out	Exterior Cladding	Colour Steel Cladding
	Windows	Frosted Window (600x800) x1, (Window 1200x1000) x2, Ranch Slider (1800x2000) x1
		Smoke Alarm, Fuse Box, Power Points x8, Lights x8, Exterior Lights x1, Gas Hot Water Callifont. No kitchen appliances, no wardrobes.
Finish	Lining	GIB Lining, Architraves 60mmx10, Skirting 90mmx10 Resene Internal Paint
	Kitchen	Engineered Stone Bench Top
	Flooring	SPC Plank Flooring
	Bathroom	Shower, Soft close toilet, Vanity 600mm Towel rail, Roll holder, Mirror above vanity, Extractor Fan

Optional upgrades

Heated Towel Rail	\$400
Cavity slider upgrade	\$400
Heat Pump 2.5KW	\$2,500
Heat Pump 3.5KW	\$3,000
Heat Pump 5KW	\$3,500
Bedroom carpet	\$450





BUILD

12 x 3m one bed: 36m²

Price \$123,000

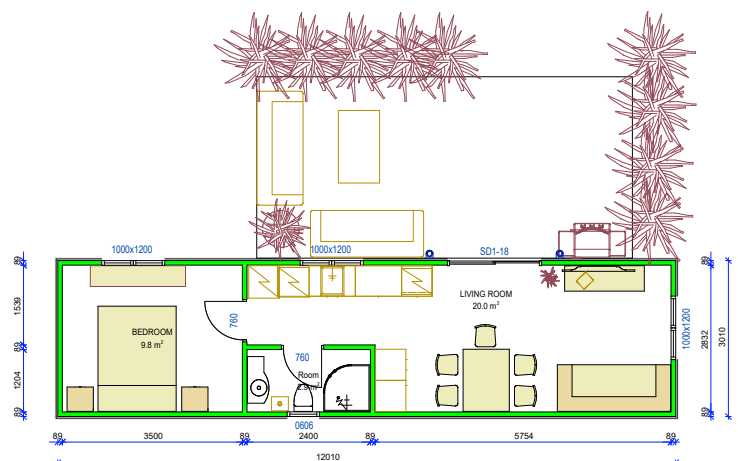
Includes Council CCC - building only



Enclosure		Steel Frames Colour steel roof, Rondo Ceiling Battens, Gutter, Down Pipe, 20mm Thermal Break Board, Cavity battens, Floor insulation Polystyrene, Roof Insulation R3.6, Walls R2.2+0.26
Fit Out	Exterior Cladding	Colour Steel Cladding
	Windows	Frosted Window (600x800) x1, (Window 1200x1000) x3, Ranch Slider (1800x2000) x1
		Smoke Alarm, Fuse Box, Power Points x9, Lights x9, Exterior Lights x1, Gas Hot Water Califont. Includes wardrobe in master.
Finish	Lining	GIB Lining, Architraves 60mmx10, Skirting 90mmx10 Resene Internal Paint
	Kitchen	Engineered Stone Bench Top. W/Oven, 4x hob, range hood splash back
	Flooring	SPC Plank Flooring
	Bathroom	Shower, Soft close toilet, Vanity 600mm Towel rail, Roll holder, Mirror above vanity, Extractor Fan

Optional upgrades

Heated Towel Rail	\$400
Cavity slider upgrade	\$400
Heat Pump 2.5KW	\$2,500
Heat Pump 3.5KW	\$3,000
Heat Pump 5KW	\$3,500
Bedroom carpet	\$450





BUILD

12 x 3m two bed: 36m²

Price \$126,500

Includes Council CCC - building only



example only



Enclosure		Steel Frames Colour steel roof, Rondo Ceiling Battens, Gutter, Down Pipe, 20mm Thermal Break Board, Cavity battens, Floor insulation Polystyrene, Roof Insulation R3.6, Walls R2.2+0.26
Fit Out	Exterior Cladding	Colour Steel Cladding
	Windows	Frosted Window (600x800) x1, (Window 1200x1000) x3, Ranch Slider (1800x2000) x1
		Smoke Alarm, Fuse Box, Power Points x9, Lights x8, Exterior Lights x1, Gas Hot Water Califont. Includes wardrobe in master.
Finish	Lining	GIB Lining, Architraves 60mmx10, Skirting 90mmx10 Resene Internal Paint
	Kitchen	Engineered Stone Bench Top. W/Oven, 4x hob, range hood splash back
	Flooring	SPC Plank Flooring
	Bathroom	Shower, Soft close toilet, Vanity 600mm Towel rail, Roll holder, Mirror above vanity, Extractor Fan

Optional upgrades

Heated Towel Rail	\$400
Cavity slider upgrade	\$400
Heat Pump 2.5KW	\$2,500
Heat Pump 3.5KW	\$3,000
Heat Pump 5KW	\$3,500
Bedroom carpet	\$450





BUILD

10.8 x 3.6m two bed: 39m²

Price \$127,000

Includes Council CCC - building only



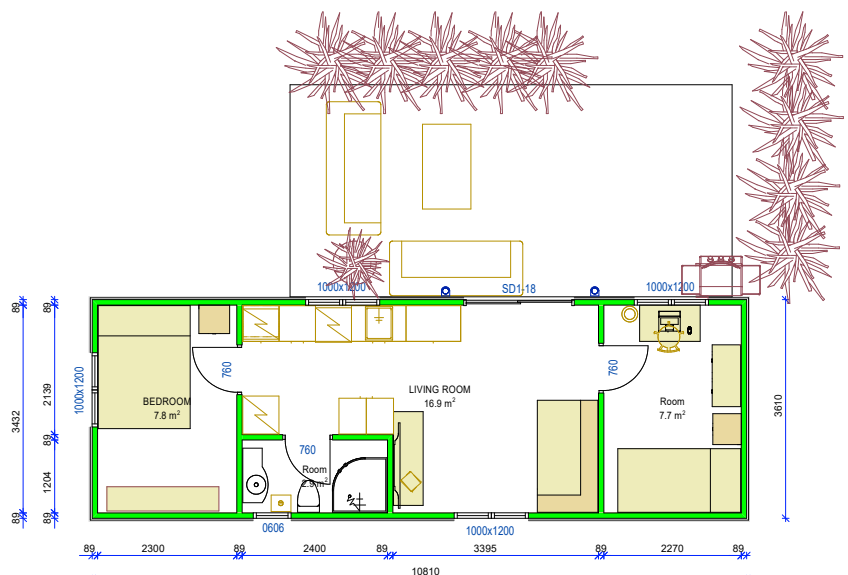
example only



Enclosure		Steel Frames Colour steel roof, Rondo Ceiling Battens, Gutter, Down Pipe, 20mm Thermal Break Board, Cavity battens, Floor insulation Polystyrene, Roof Insulation R3.6, Walls R2.2+0.26
Fit Out	Exterior Cladding	Colour Steel Cladding
	Windows	Frosted Window (600x800) x1, (Window 1200x1000) x3, Ranch Slider (1800x2000) x1
Finish		Smoke Alarm, Fuse Box, Power Points x9, Lights x8, Exterior Lights x1, Gas Hot Water Califont. Includes wardrobe in master.
	Lining	GIB Lining, Architraves 60mmx10, Skirting 90mmx10 Resene Internal Paint
	Kitchen	Engineered Stone Bench Top. W/Oven, 4x hob, range hood splash back
	Bathroom	Shower, Soft close toilet, Vanity 600mm Towel rail, Roll holder, Mirror above vanity, Extractor Fan

Optional upgrades

Heated Towel Rail	\$400
Cavity slider upgrade	\$400
Heat Pump 2.5KW	\$2,500
Heat Pump 3.5KW	\$3,000
Heat Pump 5KW	\$3,500
Bedroom carpet	\$450





BUILD

12 x 3.6m two bed: 43.2m²

Price \$133,000

Includes Council CCC - building only



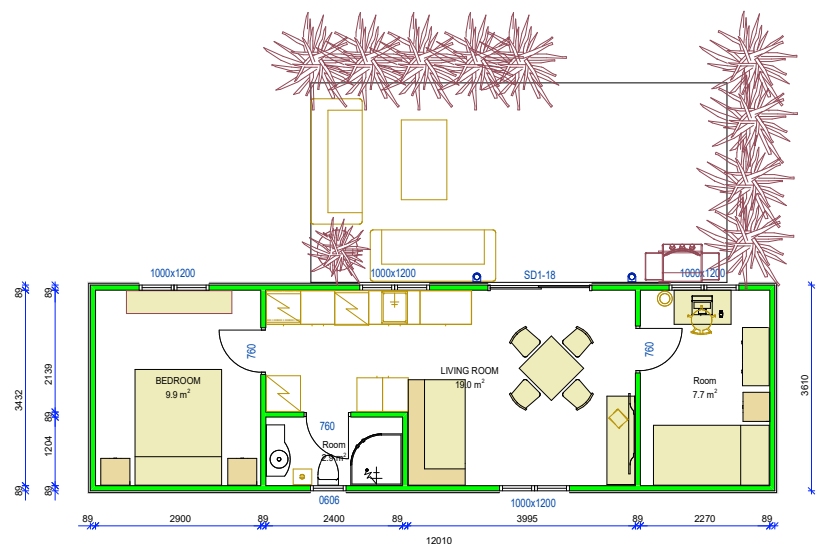
example only



Enclosure		Steel Frames Colour steel roof, Rondo Ceiling Battens, Gutter, Down Pipe, 20mm Thermal Break Board, Cavity battens, Floor insulation Polystyrene, Roof Insulation R3.6, Walls R2.2+0.26
Fit Out	Exterior Cladding	Colour Steel Cladding
	Windows	Frosted Window (600x800) x1, (Window 1200x1000) x4, Ranch Slider (1800x2000) x1
		Smoke Alarm, Fuse Box, Power Points x10, Lights x9, Exterior Lights x1, Gas Hot Water Califont Includes wardrobe in master.
Finish	Lining	GIB Lining, Architraves 60mmx10, Skirting 90mmx10 Resene Internal Paint
	Kitchen	Engineered Stone Bench Top. W/Oven, 4x hob, range hood splash back
	Flooring	Vinyl Plank Flooring
	Bathroom	Shower, Soft close toilet, Vanity 600mm Towel rail, Roll holder, Mirror above vanity, Extractor Fan

Optional upgrades

Heated Towel Rail	\$400
Cavity slider upgrade	\$400
Heat Pump 2.5KW	\$2,500
Heat Pump 3.5KW	\$3,000
Heat Pump 5KW	\$3,500
Bedroom carpet	\$450





BUILD

12.6 x 4.2m two bed: 53m²

Price \$144,500

Includes Council CCC - building only



example only



Enclosure		Steel Frames Colour steel roof, Rondo Ceiling Battens, Gutter, Down Pipe, 20mm Thermal Break Board, Cavity battens, Floor insulation Polystyrene, Roof Insulation R3.6, Walls R2.2+0.26
Fit Out	Exterior Cladding	Colour Steel Cladding
	Windows	Frosted Window (600x800) x1, (Window 1200x1000) x4, Ranch Slider (1800x2000) x1
		Smoke Alarm, Fuse Box, Power Points x10, Lights x9, Exterior Lights x1, Gas Hot Water Califont Includes wardrobe in master.
Finish	Lining	GIB Lining, Architraves 60mmx10, Skirting 90mmx10 Resene Internal Paint
	Kitchen	Engineered Stone Bench Top. W/Oven, 4x hob, range hood splash back
	Flooring	Vinyl Plank Flooring
	Bathroom	Shower, Soft close toilet, Vanity 600mm Towel rail, Roll holder, Mirror above vanity, Extractor Fan

Optional upgrades

Heated Towel Rail	\$400
Cavity slider upgrade	\$400
Heat Pump 2.5KW	\$2,500
Heat Pump 3.5KW	\$3,000
Heat Pump 5KW	\$3,500
Bedroom carpet	\$450



BUILD

13.8 x 4.2m two bed: 58m²

Price \$153,000

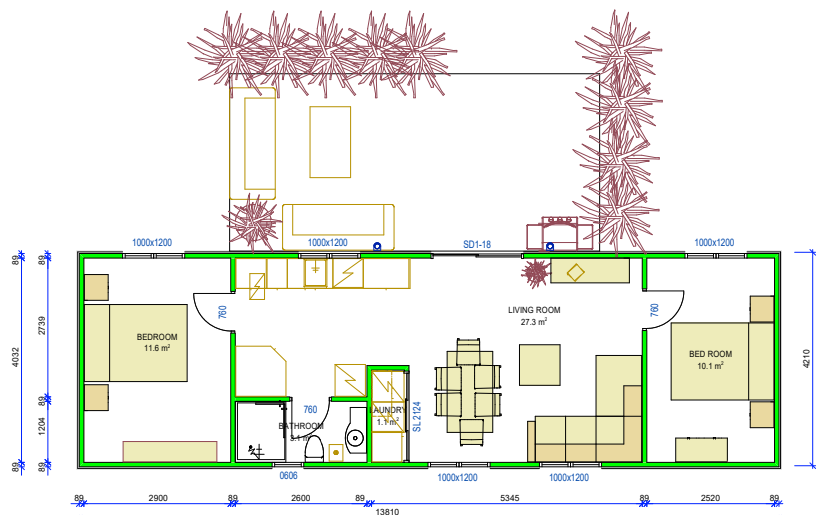
Includes Council CCC - building only



Enclosure		Steel Frames Colour steel roof, Rondo Ceiling Battens, Gutter, Down Pipe, 20mm Thermal Break Board, Cavity battens, Floor insulation Polystyrene, Roof Insulation R3.6, Walls R2.2+0.26
Fit Out	Exterior Cladding	Colour Steel Cladding
	Windows	Frosted Window (600x800) x1, (Window 1200x1000) x4, Ranch Slider (1800x2000) x1
		Smoke Alarm, Fuse Box, Power Points x11, Lights x10, Exterior Lights x1, Gas Hot Water Califont. Includes wardrobe in master.
Finish	Lining	GIB Lining, Architraves 60mmx10, Skirting 90mmx10 Resene Internal Paint
	Kitchen	Engineered Stone Bench Top. W/Oven, 4x hob, range hood splash back
	Flooring	SPC Plank Flooring
	Bathroom	Shower, Soft close toilet, Vanity 600mm Towel rail, Roll holder, Mirror above vanity, Extractor Fan

Optional upgrades

Heated Towel Rail	\$400
Cavity slider upgrade	\$400
Heat Pump 2.5KW	\$2,500
Heat Pump 3.5KW	\$3,000
Heat Pump 5KW	\$3,500
Bedroom carpet	\$450





BUILD

6.6 x 9.6m two bed: 64m²

Price \$159,500

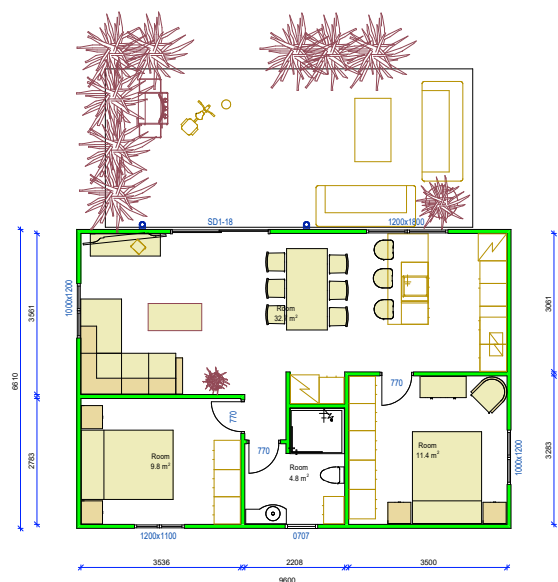
Includes Council CCC - building only



Enclosure		Steel Frames Colour steel roof, Rondo Ceiling Battens, Gutter, Down Pipe, 20mm Thermal Break Board, Cavity battens, Floor insulation Polystyrene, Roof Insulation R3.6, Walls R2.2+0.26
Fit Out	Exterior Cladding	Colour Steel Cladding
	Windows	Frosted Window (600x800) x1, (Window 1200x1000) x4, Ranch Slider (1800x2000) x1, Back door x1
		Smoke Alarm, Fuse Box, Power Points x11, Lights x10, Exterior Lights x1, Gas Hot Water Califont. Includes wardrobe in master.
Finish	Lining	GIB Lining, Doors Internal Flat, Architraves 60mmx10, Skirting 90mmx10 Resene Internal Paint
	Kitchen	Engineered Stone Bench Top. W/Oven, 4x hob, range hood splash back
	Flooring	SPC Plank Flooring
	Bathroom	Shower, Soft close toilet, Vanity 600mm Towel rail, Roll holder, Mirror above vanity, Extractor Fan

Optional upgrades

Heated Towel Rail	\$400
Cavity slider upgrade	\$400
Heat Pump 2.5KW	\$2,500
Heat Pump 3.5KW	\$3,000
Heat Pump 5KW	\$3,500
Bedroom carpet	\$450





Price \$169,500


01

Shower, Soft close toilet, Vanity 600mm
Towel rail, Roll holder, Mirror above vanity, Extractor Fan

13



BUILD

12.6 x 4.2m three bed: 53m²

Price \$148,000

Includes Council CCC - building only

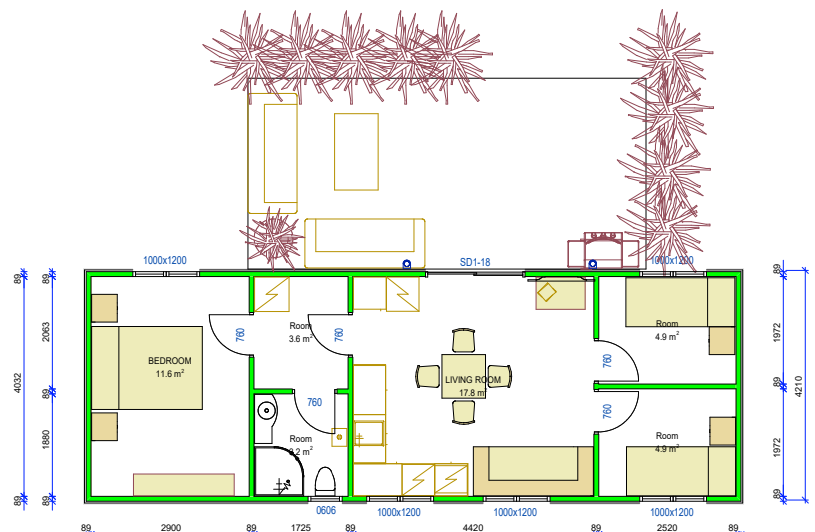


Enclosure		Steel Frames Colour steel roof, Rondo Ceiling Battens, Gutter, Down Pipe, 20mm Thermal Break Board, Cavity battens, Floor insulation Polystyrene, Roof Insulation R3.6, Walls R2.2+0.26
Fit Out	Exterior Cladding	Colour Steel Cladding
	Windows	Frosted Window (600x800) x1, (Window 1200x1000) x5, Ranch Slider (1800x2000) x1
		Smoke Alarm, Fuse Box, Power Points x11, Lights x9, Exterior Lights x1, Gas Hot Water Califont. Includes wardrobe in master.
Finish	Lining	GIB Lining, Doors Internal Flat, Architraves 60mmx10, Skirting 90mmx10 Resene Internal Paint
	Kitchen	Engineered Stone Bench Top. W/Oven, 4x hob, range hood splash back
	Flooring	SPC Plank Flooring
	Bathroom	Shower, Soft close toilet, Vanity 600mm Towel rail, Roll holder, Mirror above vanity, Extractor Fan

Optional upgrades

Heated Towel Rail
Cavity slider upgrade
Heat Pump 2.5KW
Heat Pump 3.5KW
Heat Pump 5KW
Bedroom carpet

\$400
\$400
\$2,500
\$3,000
\$3,500
\$450





BUILD

13.8 x 4.2m three bed: 58m²

Price \$155,000

Includes Council CCC - building only



example only

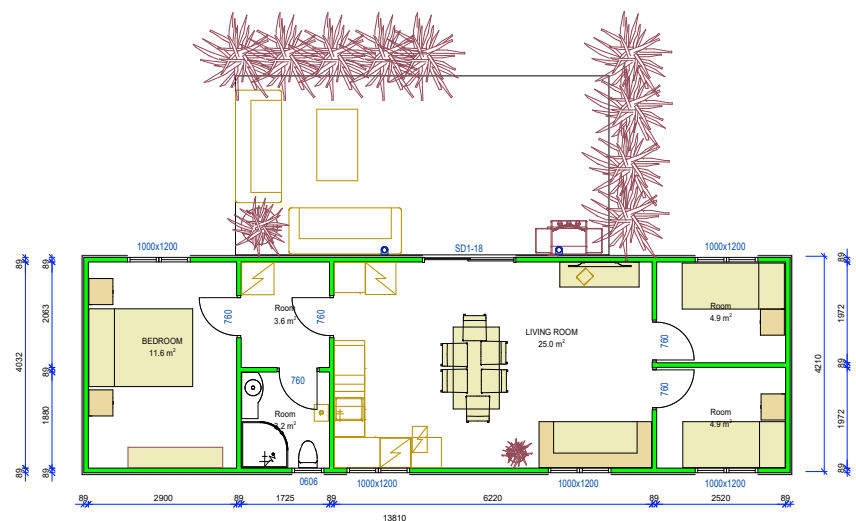


Enclosure		Steel Frames Colour steel roof, Rondo Ceiling Battens, Gutter, Down Pipe, 20mm Thermal Break Board, Cavity battens, Floor insulation Polystyrene, Roof Insulation R3.6, Walls R2.2+0.26
Fit Out	Exterior Cladding	Colour Steel Cladding
	Windows	Frosted Window (600x800) x1, (Window 1200x1000) x5, Ranch Slider (1800x2000) x1
		Smoke Alarm, Fuse Box, Power Points x12, Lights x12, Exterior Lights x1, Gas Hot Water Califont. Includes wardrobe in master.
Finish	Lining	GIB Lining, Doors Internal Flat x2, Architraves 60mmx10, Skirting 90mmx10 Resene Internal Paint
	Kitchen	Engineered Stone Bench Top. W/Oven, 4x hob, range hood splash back
	Flooring	SPC Plank Flooring
	Bathroom	Shower, Soft close toilet, Vanity 600mm Towel rail, Roll holder, Mirror above vanity, Extractor Fan

Optional upgrades

Heated Towel Rail
Cavity slider upgrade
Heat Pump 2.5KW
Heat Pump 3.5KW
Heat Pump 5KW
Bedroom carpet

\$400
\$400
\$2,500
\$3,000
\$3,500
\$450





BUILD

13.2 x 7.2m three bed: 95m²

Price \$231,000

Includes Council CCC - building only



example only

Enclosure		Steel Frames Colour steel roof, Rondo Ceiling Battens, Gutter, Down Pipe, 20mm Thermal Break Board, Cavity battens, Floor insulation Polystyrene, Roof Insulation R3.6, Walls R2.2+0.26
Fit Out	Exterior Cladding	Colour Steel Cladding
	Windows	Frosted Window (600x800) x1, (Window 1200x1000) x5, Ranch Slider (1800x2000) x1
		Smoke Alarm, Fuse Box, Power Points x12, Lights x12, Exterior Lights x1, Gas Hot Water Califont. Includes wardrobe in master.
Finish	Lining	GIB Lining, Doors Internal Flat x2, Architraves 60mmx10, Skirting 90mmx10 Resene Internal Paint
	Kitchen	Engineered Stone Bench Top. W/Oven, 4x hob, range hood splash back
	Flooring	SPC Plank Flooring
	Bathroom	Shower, Soft close toilet, Vanity 600mm Towel rail, Roll holder, Mirror above vanity, Extractor Fan

Optional upgrades

Heated Towel Rail	\$400
Cavity slider upgrade	\$400
Heat Pump 2.5KW	\$2,500
Heat Pump 3.5KW	\$3,000
Heat Pump 5KW	\$3,500
Bedroom carpet	\$450





BUILD

7.2 x 15m four bed: 108m²

Price \$245,000

Includes Council CCC - building only



example only



Enclosure		Steel Frames Colour steel roof, Rondo Ceiling Battens, Gutter, Down Pipe, 20mm Thermal Break Board, Cavity battens, Floor insulation Polystyrene, Roof Insulation R3.6, Walls R2.2+0.26
Fit Out	Exterior Cladding	Colour Steel Cladding
	Windows	Frosted Window (600x800) x2, (Window 1200x1000) x6, Ranch Slider (1800x2000) x1, Back door x1
		Smoke Alarm, Fuse Box, Power Points x15, Lights x14, Exterior Lights x2, Gas Hot Water Califont. Includes wardrobe in master.
Finish	Lining	GIB Lining, Doors Internal Flat x7, Architraves 60mmx10, Skirting 90mmx10 Resene Internal Paint
	Kitchen	Engineered Stone Bench Top. W/Oven, 4x hob, range hood splash back
	Flooring	SPC Plank Flooring
	Bathroom	Shower, Soft close toilet, Vanity 600mm Towel rail, Roll holder, Mirror above vanity, Extractor Fan, Laundry and tap.

Optional upgrades

Heated Towel Rail	\$400
Cavity slider upgrade	\$400
Heat Pump 2.5KW	\$2,500
Heat Pump 3.5KW	\$3,000
Heat Pump 5KW	\$3,500
Bedroom carpet	\$450





BUILD

7.2 x 19.2m five bed: 138m²

\$296,000

Includes Council CCC - building only



example only



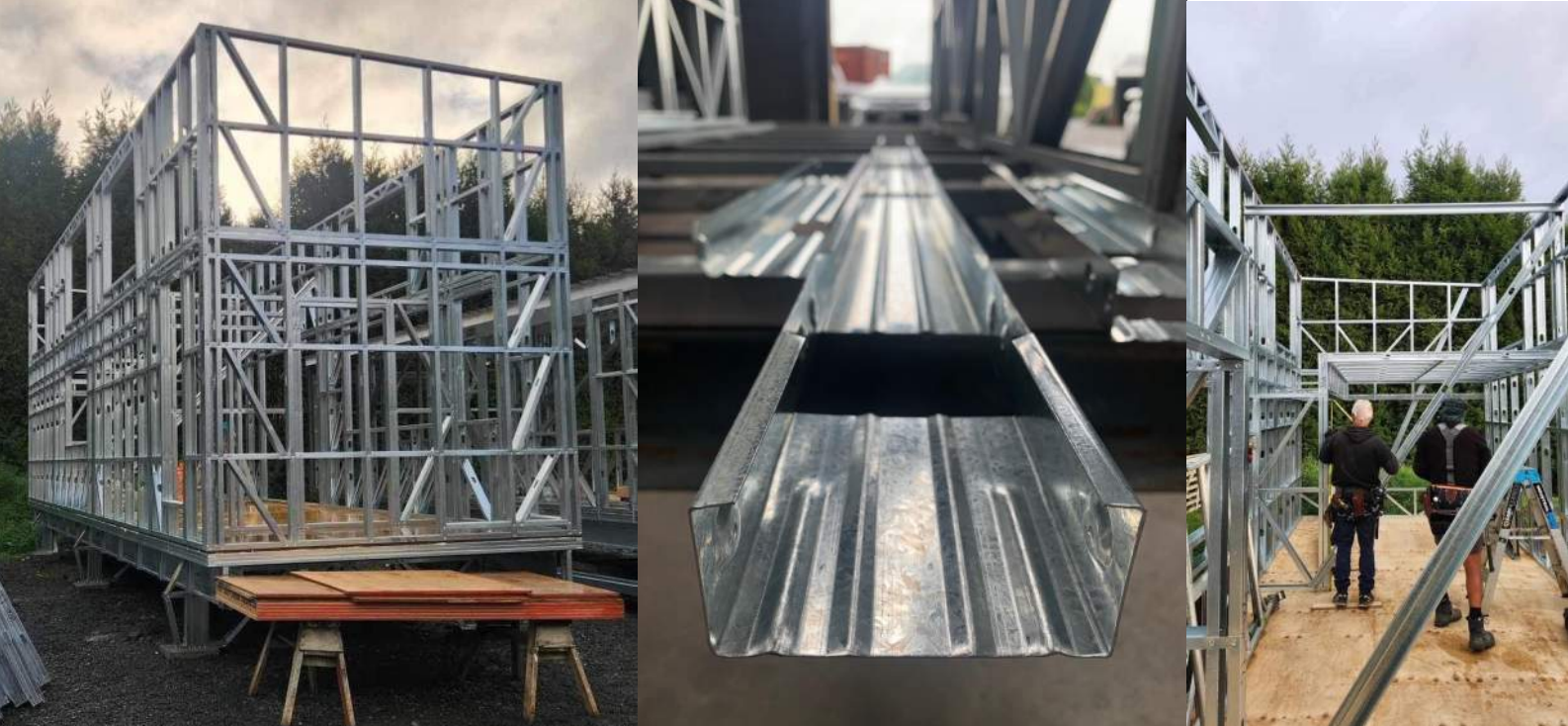
Enclosure		Steel Frames Colour steel roof, Rondo Ceiling Battens, Gutter, Down Pipe, 20mm Thermal Break Board, Cavity battens, Floor insulation Polystyrene, Roof Insulation R3.6, Walls R2.2+0.26
Fit Out	Exterior Cladding	Colour Steel Cladding
	Windows	Frosted Window (600x800) x2, (Window 1200x1000) x8, Ranch Slider (1800x2000) x2, Back door x1
		Smoke Alarm, Fuse Box, Power Points x20, Lights x18, Exterior Lights x2, Gas Hot Water Califont. Includes wardrobe in master.
Finish	Lining	GIB Lining, Doors Internal Flat x8, Architraves 60mmx10, Skirting 90mmx10 Resene Internal Paint
	Kitchen	Engineered Stone Bench Top. W/Oven, 4x hob, range hood splash back
	Flooring	SPC Plank Flooring
	Bathroom	Shower, Soft close toilet, Vanity 600mm Towel rail, Roll holder, Mirror above vanity, Extractor Fan, Laundry and tap.

Optional upgrades

Heated Towel Rail	\$400
Cavity slider upgrade	\$400
Heat Pump 2.5KW	\$2,500
Heat Pump 3.5KW	\$3,000
Heat Pump 5KW	\$3,500
Bedroom carpet	\$450







Advantages of Steel Framing in Our Transportable Homes



Steel framing offers numerous advantages, making it an excellent choice for the structure of our transportable homes. One of the primary benefits is its strength and durability. Steel is resistant to warping, twisting, and shrinking, ensuring that the frame maintains its shape and structural integrity over time. This stability translates to a longer-lasting home that can better withstand the elements, providing peace of mind to homeowners. Additionally, steel is non-combustible and resistant to pests like termites, which can be a concern with traditional timber framing.

Another key advantage is the lightweight nature of steel compared to timber. This reduced weight not only makes transportation easier but also allows for more design flexibility, enabling us to maximise the usable space within your transportable home without compromising on strength. Steel is also an environmentally friendly option, as it is 100% recyclable and contributes to reduced waste during the building process. By choosing steel framing, we can deliver a home that is not only sturdy and resilient but also sustainable and better suited for the future.

Metal Cladding

Using long run roofing iron as exterior cladding for our transportable homes offers both functional and aesthetic benefits. This material is renowned for its durability and low maintenance, making it an ideal choice for a transportable home that needs to withstand varying weather conditions. Long run iron is highly resistant to corrosion, rust, and UV damage, ensuring that your home's exterior remains visually appealing and structurally sound for many years. Its smooth, modern lines also create a sleek, contemporary look, adding to the visual appeal of the transportable home.

Additionally, long run roofing iron is lightweight, which is crucial for transportable homes where minimising weight is a priority. Its lightweight nature simplifies the installation process and reduces the load on the structure, enhancing the overall efficiency and mobility of the home. The material is also available in a range of profiles and colours, providing flexibility in design while maintaining a consistent, clean appearance. By choosing long run iron for cladding, we can deliver a robust, long-lasting exterior that complements the strength and modern aesthetic of our steel-framed tiny homes.



Bathroom

Our bathrooms come standard with

- 1000mm shower with double sliding doors.
- Toilet with soft close.
- Vanity with mirror above.
- Extractor fan.

Fittings for Standard Transportable Homes
(final product will be same/similar at our discretion through our regular suppliers)

Kitchen

Fully customisable kitchen - You can visit our kitchen supplier and design the kitchen of your dreams.

Our Basic Standard kitchen is based off:

- Engineered stone benchtop
- Sink and tap-ware
- 2x underbench double cupboard
- Draws
- Pantry
- Space for dishwasher and fridge.
- Built in/oven
- 4x hob
- range hood,
- 600mm splashback

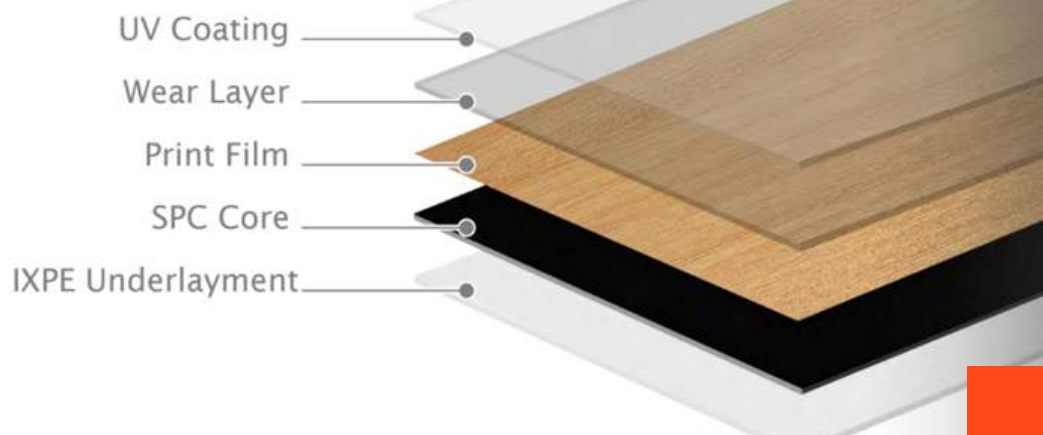
Each house comes with a PCsum for the kitchen. Once your final chosen kitchen quote comes in, you will be charged or credited the difference.

Units 65m2 and larger have a larger kitchen PC sum.

Appliances not included in the 10.2x3 and smaller



Included flooring options



Colour options



Optional upgrade - carpet

Carpet is not included as standard in the Walls Build Classic range, but we offer a cozy bedroom carpet upgrade starting from just \$450 per bedroom. This option features high-quality cut pile solution dyed nylon carpet, known for its softness, resilience, and stain resistance—perfect for adding a touch of warmth and comfort to your sleeping space. Choose from our curated selection of colours to perfectly complement your transportable home's interior and create a welcoming retreat.

Colour options



Additional Considerations

When purchasing a transportable home, there are a few additional elements you'll need to arrange independently to get your new space fully set up and ready to enjoy. These include site preparations such as foundations or groundworks, connections to power and water, as well as wastewater solutions like septic or greywater systems and decks and stairs up to the front door. Additionally, organising transport to your location is essential. We're happy to offer guidance and connect you with trusted professionals to make this process as smooth as possible, ensuring your transportable home has everything it needs to function optimally on your chosen site.



Jono - 021 874 803
Stephen - 027 472 6940



www.wallsbuild.co.nz



Office@wallsgroup.co.nz