



马鞍山市天钧机械制造有限公司

Ma'anshan Tianjun Machinery Manufacturing Co., Ltd



Maanshan Tianjun Machinery Manufacturing Co., Ltd. was founded in 2005, specializing in rail transport wheel production. The company integrates R&D, production, sales, technology, warehouse and logistics, as one of the state-level High-tech enterprises.



目 录

CONTENTS

- 01** 企业介绍
Company Introduction
- 02** 产品介绍
Product Introduction
- 44** 生产设备
Production Equipment
- 46** 检测设备
Test Equipment
- 48** 企业荣誉
Enterprise Honor
- 49** 认证证书
Authentication Certificate
- 50** 合作伙伴
Cooperative Partner





Company Introduction

企 业 介 绍

马鞍山市天钧机械制造有限公司成立于 2005 年，专业从事轨道交通车轮生产，是集研发、生产、销售、技术服务、仓储物流为一体的国家级高新技术企业。

公司拥有车轮、轮箍、环件、车轴，轮对等五大系列产品，主要产品有地铁车轮、弹性车轮、客车车轮、动车车轮、货车车轮、机车车轮、工矿车轮。同时，公司销售转向架、车钩、铁轨、扣件等相关铁路产品。天钧公司建立了一套从产品研发和设计、生产过程控制、质量检验到售后服务的管理体系，先后通过了 ISO9001 质量管理体系和多项产品认证。产品性能优越，覆盖面广，远销美国、加拿大、墨西哥、英国、荷兰、丹麦、意大利、克罗地亚、塞尔维亚、土耳其、菲律宾、巴基斯坦、印度、孟加拉国、毛里塔尼亚、南非、莫桑比克、津巴布韦、肯尼亚、塞内加尔等五十多个国家，具有极强的市场竞争力。

公司拥有**发明专利 12 个，实用新型专利 25 个**，先后荣获安徽省商标品牌示范企业、小巨人企业，参与并组建了“马鞍山轨道交通车轮加工工程技术研究中心”，建立了“安徽工业大学马鞍山工业技术研究院：轨道交通车轮加工技术研发基地”。公司同时与马钢车轮公司，中车长江公司，太重，晋西车轴，攀钢等国内知名企业建立了良好的合作关系，联合开展战略性研究开发，推动产业技术的升级换代，力争成为轨道交通领域的知名品牌。

Maanshan Tianjun Machinery Manufacturing Co., Ltd. was founded in 2005, specializing in rail transport wheel production. The company integrates R&D, production, sales, technology, warehouse and logistics. as one of the state-level High-tech enterprises.

The company has five series of products, such as wheels, tyres, ring parts, axles and wheelsets. The main products include subway wheels, elastic wheels, passenger car wheels, high-speed car wheels, freight car wheels, locomotive wheels, and industrial and mining wheels. Meanwhile, Maanshan Tianjun is engaged in selling other railway products like bogies, couplers, rails and fasteners. The company has established a set of management system including product development, design, production process control, quality inspection, after-sales service. It has passed the ISO9001 quality management system and several product certifications. Product performance is superior, covering a wide range. The products are exported to more than fifty countries, including the USA, Canada, Mexico, the UK, the Netherlands, Denmark, Italy, Croatia, Serbia, Turkey, the Philippines, Pakistan, India, Bangladesh, Mauritania, South Africa, Mozambique, Zimbabwe, Kenya, Senegal, etc, with strong market competitiveness.

Maanshan Tianjun Machinery Manufacturing Co., Ltd. owns 12 invention patents and 25 utility model patents. It has won the Anhui Province Trademark Brand Demonstration Enterprise, small giant enterprise, participating in and forming the "Maanshan Rail transit wheel processing Engineering Technology Research Center", establishing "Anhui University of Technology, Maanshan Industrial Research institute: Rail Wheel Processing Technology R&D Base." The company has built good cooperation relationship with Masteel, CRRC, Taiyuan Heavy Industry Company, Jinxi Axle, Pangang and other well-known domestic enterprises to establish joint strategic Research and development, promote the upgrading of industrial technology, and strive to become a well-known brand in the field of rail transport.



1

地铁车轮 Metro Wheel

地铁作为一种现代大都市主要的快捷的交通工具，需要地铁车轮兼顾良好的强度和韧性指标，安全、低噪音、高耐磨性。适用于国内外各种地铁车辆。

车轮外径：840-1024mm

代表规格：MTJ840C，MTJ860，MTJ1024 等系列车轮

车轮标准：AAR 标准，EN 标准，UIC 标准，IRS 标准，GOST 标准



Subway is a main efficient transportation means in the modern big city. Metro wheels are required to have both good strength and toughness index, safety, low noise and high abrasion resistance. Metro wheels are applied in various kinds of metro vehicles both domestically and overseas.

Wheel outer diameter: 840-1024mm

Representative specifications: MTJ840C, MTJ860, MTJ1024 and other series of wheels

Wheel standards: AAR standard, EN standard, UIC standard, IRS standard, GOST standard

MTJ840C



标准：技术协议

材质：ER7

运行速度 $\leq 120\text{km/h}$

轴重 $\leq 14\text{t}$

Standard: technical agreement

Material: ER7

Running speed $\leq 120\text{km/h}$,

Axle load $\leq 14\text{t}$

MTJ860



执行标准：EN13262

材质：ER8

运行速度 $\leq 120\text{km/h}$

轴重 14T

Execution standard: EN13262

Material: ER8

Running speed $\leq 120\text{km/h}$

Axle load $\leq 14\text{t}$

MTJ1024



执行标准：技术协议 (EN13262)

材质：ER7

运行速度 $\leq 60\text{km/h}$

轴重 $\leq 10\text{t}$

Execution standard: technical agreement(EN13262)

Material: ER7

Running speed $\leq 60\text{km/h}$

Axle load $\leq 10\text{t}$

2 弹性车轮 Resilient Wheel

弹性车轮主要用于城市低地板现代有轨电车及轻轨车辆。

主要特点：噪音低、对环境无污染、乘坐舒适，是现代城市交通的发展方向。



按弹性元件的主要受力状况，弹性车轮的结构形式可分为 3 种类型：压缩型、剪切型和压剪复合型。每种结构都有其性能特点。剪切型结构的弹性车轮其轴向刚度好，压缩型结构径向刚度较高，复合型则兼顾了车轮的径向和轴向刚度，是弹性车轮的主要研究方向。

Resilient wheels are mainly used in urban urban modern low-floor tram and LRV. The main features: low noise, non-pollution to the environment, comfortable ride, and is the developing trend of modern urban transportation.

According to the main force of elastic components, the structure of resilient wheels can be divided into three types: shear type, compression type and composite type. Each structure has its own performance characteristic. The axial stiffness of shear type structure is good. The compression type of wheels has good radial stiffness. The composite type has both good radial and axial stiffness, thus this type becomes the main research direction of resilient wheels.

MTJ608



执行标准 :MWTS 511-2013-660

材质 :B7T

运行速度 \leq 80km/h

轴重 \leq 11.5t

Technical standard: MWTS 511-2013-660

Material: B7T

Running speed \leq 80km/h

Axle load \leq 11.5t

MTJ650



技术标准 : 轮箍符合 0207B01817 《B 级钢弹性车轮轮箍通用技术规范》

材质 :AAR-B

运行速度 \leq 80kmh

轴重 \leq 11.5t

Technical standard: tyre meets 0207B01817

《General technical specification of B grade steel tyre of resilient wheel》

Material: AAR-B

Running speed \leq 80km/h

Axle load \leq 11.5t

MTJ660



技术标准 :UIC810-1

材质 :B4N

运行速度 \leq 80km/h

轴重 \leq 11.5t

Technical standard: UIC810-1

Material: B4N

Running speed \leq 80km/h

Axle load \leq 11.5t

MTJ711



执行标准 :AAR M-107/M-208

材质 :AAR-C

运行速度 \leq 80km/h

轴重 \leq 11.5t

Execution standard: AAR M-107/M-208

Material: AAR-C

Running speed \leq 80km/h

Axle load \leq 11.5t

MTJ740



执行标准 :UIC810-1

材质 :B4N

运行速度 \leq 80km/h

轴重 \leq 11.5t

Technical standard:UIC810-1

Material: B4N

Running speed \leq 80km/h,

Axle load \leq 11.5t



3 客车车轮 Passenger Car Wheel

产品拥有较高的纯净度，较高的硬度和韧性，运行安全可靠。车轮外径 725-950mm，代表规格：代表规格：725 系列，914 系列，915 系列，920 系列，880 系列等。



The product has high degree of purity, high hardness and toughness, and ensures safe and reliable operation. The wheel external diameter: 725-950mm, representative specifications: representative specifications: 725 series, 914 series, 915 series, 920 series, 880 series, etc.

MTJ920G



标准 :EN13262&TLB 02-003.03
材质 :ER7
轴重 ≤ 17.5t
运行速度 ≤ 200km/h

Standard:EN13262&TLB 02-003.03
Material: ER7
Axle load ≤ 17.5t
Running speed ≤ 200km/h

WBA303



执行标准: EN13262 及 DBS918277
材质: ER7
轴重: 25T
运行速度: 80-120km/h

Execution standards: EN13262 and DBS98277
Material: ER7
Axle weight: 25T
Operating speed: 80-120km/h

MTJ920-W-CN



执行标准: EN13262
材质: ER9
轴重: 16.5T
运行速度: 120-200km/h

Execution standard: EN13262
Material: ER9
Axle weight: 16.5T
Operating speed: 120-200km/h

MTJ840-W-ID



执行标准: 技术协议
材质: EN9 BS 970 (55C8, IS: 2004)
轴重: 16-18T
运行速度: 110-160km/h

Execution standard: Technical agreement
Material: EN9 BS 970 (55C8, IS: 2004)
Axle weight: 16-18T
Operating speed: 110-160km/h

MTJ880-W-KLDY



执行标准: EN13262
材质: ER7
轴重: 16.5-20T
运行速度: 120-160km/h

Execution standard: EN13262
Material: ER7
Axle load: 16.5-20T
Operating speed: 120-160km/h

MTJ850-W-BM



执行标准: EN13262
材质: ER9
轴重: 16-20T
运行速度: 80-120km/h

Execution standard: EN13262
Material: ER9
Axle weight: 16-20T
Operating speed: 80-120km/h



MTJ990-W-AJ



执行标准: UIC 821-3
材质: ER8
轴重: 16-18T
运行速度: 80-100km/h

Execution standard: UIC 821-3
Material: ER8
Axle weight: 16-18T
Operating speed: 80-100km/h

KKD-65-SF



执行标准: TJ/CL414-2014
材质: CK65K
轴重: 17T
运行速度: 200km/h

Execution standard: TJ/CL414-2014
Material: CK65K
Axle weight: 17T
Operating speed: 200km/h

WNJ840-3L-2



执行标准: 技术协议
材质: ER9
轴重: 14-17T
运行速度: 80-120km/h

Execution standard: Technical agreement
Material: ER9
Axle weight: 14-17T
Operating speed: 80-120km/h

WSF860-ID



执行标准: 技术协议
材质: CK65K
轴重: 16T
运行速度: 200-250km/h

Execution standard: Technical agreement
Material: CK65K
Axle weight: 16T
Operating speed: 200-250km/h

WWX840-2LA



执行标准: PM000101124

材质: ER9

轴重: 14T

运行速度: 100-140km/h

Execution standard: PM000101124

Material: ER9

Axle weight: 14T

Operating speed: 100-140km/h

WZZ840-WHXG



执行标准: 技术协议

材质: ER9

轴重: 14T

运行速度: 100-140km/h

Execution standard: Technical agreement

Material: ER9

Axle weight: 14T

Operating speed: 100-140km/h

CRH-CD5



执行标准: 技术协议

材质: D2

轴重: 17T

运行速度: 160km/h

Execution standard: Technical agreement

Material: D2

Axle weight: 17T

Operating speed: 160km/h

CRH-CT5



执行标准: 技术协议

材质: D2

轴重: 17T

运行速度: 160km/h

Execution standard: Technical agreement

Material: D2

Axle weight: 17T

Operating speed: 160km/h



4 货车车轮 Freight Car Wheel

车轮外径范围 660-1000mm。代表规格有：H36、P33 等。

The range of wheel external diameter: 660-1000mm. The representative specification are H36, P33, etc.



H36-MTJ



执行标准 :AAR M107/M208

材质 :AAR-C

运行速度 $\leq 120\text{km/h}$

轴重 $\leq 21\text{t}$

Execution standard: AAR M107/M208

Material: AAR-C

Running speed $\leq 100\text{km/h}$

Axle load $\leq 21\text{t}$

P33-MTJ



执行标准 :AAR M-107/M-208

材质 :AAR-B、AAR-C、AAR-D、AAR-CM

运行速度 $\leq 120\text{km/h}$

轴重 $\leq 21\text{t}$

Execution standard: AAR M-107/M-208

Material: AAR-B、AAR-C、AAR-D、AAR-CM

Running speed $\leq 120\text{km/h}$

Axle load $\leq 21\text{t}$

WMR1000



执行标准: AAR M107/M-208
材质: AAR-C
轴重: 30T
运行速度: $\leq 70\text{km/h}$

Execution standard: AAR M107/M-208
Material: AAR-C
Axle weight: 30T
Operating speed: $\leq 70\text{km/h}$

MTJ914-W-MSBK



执行标准: AAR M107/M-208
材质: AAR-B
轴重: $\leq 32.5\text{T}$
运行速度: $\leq 100\text{km/h}$

Execution standard: AAR M107/M-208
Material: AAR-B
Axle load: $\leq 32.5\text{T}$
Operating speed: $\leq 100\text{km/h}$

ZA863



执行标准: AAR M107/M-208
材质: AAR-C
轴重: $\leq 30\text{T}$
运行速度: $\leq 70\text{km/h}$

Execution standard: AAR M107/M-208
Material: AAR-C
Axle load: $\leq 30\text{T}$
Operating speed: $\leq 70\text{km/h}$

WMTJ866-MG



执行标准: AAR M107/M-208
材质: AAR-B
轴重: 21-25T
运行速度: $\leq 80\text{km/h}$

Execution standard: AAR M107/M-208
Material: AAR-B
Axle weight: 21-25T
Operating speed: $\leq 80\text{km/h}$

YN838A-5



执行标准: 技术协议
材质: CL60
轴重: 16-20T
运行速度: $\leq 60\text{km/h}$

Execution standard: Technical agreement
Material: CL60
Axle weight: 16-20T
Operating speed: $\leq 60\text{km/h}$



MTJ920



执行标准: EN3262
材质: ER7
轴重: 20-25T
运行速度: $\leq 120\text{km/h}$

Execution standard: EN3262
Material: ER7
Axle load: 20-25T
Operating speed: $\leq 120\text{km/h}$

RU957



执行标准: 技术协议
材质: 2
轴重: 23.5T
运行速度: $\leq 100\text{km/h}$

Execution standard: Technical agreement
Material: 2
Axle weight: 23.5T
Operating speed: $\leq 100\text{km/h}$

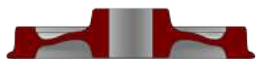
K36-AT



执行标准: AAR M107/M-208
材质: AAR-B
轴重: $\leq 36\text{T}$
运行速度: $\leq 100\text{km/h}$

Execution standard: AAR M107/M-208
Material: AAR-B
Axle load: $\leq 36\text{T}$
Operating speed: $\leq 100\text{km/h}$

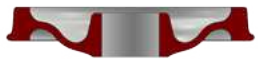
MY850A



执行标准: BS5892 part3:1992
材质: R9
轴重: 12.5T
运行速度: $\leq 120\text{km/h}$

Execution standard: BS5892 part 3:1992
Material: R9
Axle weight: 12.5T
Operating speed: $\leq 120\text{km/h}$

Q970D



执行标准: AAR M107/M-208
材质: AAR-C
轴重: 40T
运行速度: $\leq 80\text{km/h}$

Execution standard: AAR M107/M-208
Material: AAR-C
Axle load: 40T
Operating speed: $\leq 80\text{km/h}$

5

机车车轮 Locomotive Wheel

机车车轮采用超高功率大电炉冶炼，钢质纯净度高、强韧性好、耐磨、安全可靠。代表规格有 SS3M, SS8M, DF8BM, DF11M, DF4DM, HXN3, 广泛应用于各种型号的电力机车和内燃机车。



Locomotive wheels are melted by ultra-high-power EAF, with high purity, good strength and toughness, good wear resistance, safety and reliability. The representative specifications are SS3M, SS8M, DF8BM, DF11M, DF4DM, HXN3, and are extensively applied in various kinds of electric locomotives and diesel locomotives.

E40-MTJ<1016>



标准 :AAR M-107/M-208
材质 :AAR-B
轴重 ≤ 19t
运行速度 ≤ 100km/h

Standard:AAR M-107/M-208
Material: AAR-B
Axle load ≤ 19t
Operating speed ≤ 100km/h

MTJ914E-ID



执行标准: IRS R-34-15
材质: AAR-B
轴重: ≤ 22.5T
运行速度: 80-120km/h

Execution standard: IRS R-34-15
Material: AAR-B
Axle load: ≤ 22.5T
Operating speed: 80-120km/h



MTJ1000C-W-ID



执行标准: IRS R-34-15
材质: AAR-B
轴重: 22.5T
运行速度: 80-120km/h

Execution standard: IRS R-34-15
Material: AAR-B
Axle weight: 22.5T
Operating speed: 80-120km/h

WID1092E



执行标准: IRS R-34-15
材质: AAR-B
轴重: 22.5T
运行速度: 80-100km/h

Execution standard: IRS R-34-15
Material: AAR-B
Axle weight: 22.5T
Operating speed: 80-100km/h

WMRT1076-MTJ



执行标准: AAR M107/M-208
材质: AAR-C
轴重: 35T
运行速度: 40-80km/h

Execution standard: AAR M107/M-208
Material: AAR-C
Axle weight: 35T
Operating speed: 40-80km/h

MTJ1092-W-MR



执行标准: AAR M107/M-208
材质: AAR-C
轴重: 22.5T
运行速度: 70-90km/h

Execution standard: AAR M107/M-208
Material: AAR-C
Axle weight: 22.5T
Operating speed: 70-90km/h

MTJ1250-W-BM



执行标准: EN13262
材质: ER9
轴重: 21T
运行速度: 80-120km/h

Execution standard: EN13262
Material: ER9
Axle weight: 21T
Operating speed: 80-120km/h

MTJ1050



执行标准: TJ/JW004-2013

材质: J11

轴重: 23T

运行速度: 100km/h

Execution standard: TJ/JW004-2013

Material: J11

Axle load: 23T

Operating speed: 100km/h

MTJ1100



执行标准: EN13262

材质: ER8

轴重: 22.5T

运行速度: 80-120km/h

Execution standard: EN13262

Material: ER8

Axle weight: 22.5T

Operating speed: 80-120km/h

MTJ1000D



执行标准: IRS R-34-09

材质: AAR-B

轴重: 22.5T

运行速度: 80-100km/h

Execution standard: IRS R-34-09

Material: AAR-B

Axle weight: 22.5T

Operating speed: 80-100km/h

WUZ1250



执行标准: EN13262

材质: ER9

轴重: 23T

运行速度: 80-100km/h

Execution standard: EN13262

Material: ER9

Axle load: 23T

Operating speed: 80-100km/h



6 工矿车轮 Industrial and Mining Wheel



工矿车轮种类繁多，可广泛应用于铁路运输、港口机械、工程机械，冶金能源等诸多领域。代表产品有 650 系列、710 系列、711 系列、760 系列、840 系列等。

There are many kinds of industrial and mining wheels, which can be widely used in railway transportation, port machinery, construction machinery, metallurgical energy and many other fields. Among them, the representative products are 650 series, 710 series, 711 series, 760 series, 840 series, etc.

MTJ838



执行标准: AAR M107/M-208

材质: AAR-C

轴重: 6T

运行速度: $\leq 60\text{km/h}$

Execution standard: AAR M107/M-208

Material: AAR-C

Axle weight: 6T

Operating speed: $\leq 60\text{km/h}$

MTJ550



执行标准: 技术协议 MWTS 511-2015-031

材质: AAR-C

轴重: 10T

运行速度: $\leq 30\text{km/h}$

Execution standard: Technical agreement

MWTS 511-2015-031

Material: AAR-C

Axle load: 10T

Operating speed: $\leq 30\text{km/h}$

MTJ609-W-TS



执行标准: AAR M107/M-208

材质: AAR-C

轴重: $\leq 6\text{T}$

运行速度: $\leq 60\text{km/h}$

Execution standard: AAR M107/M-208

Material: AAR-C

Axle load: $\leq 6\text{T}$

Operating speed: $\leq 60\text{km/h}$

MTJ400-W-US



执行标准: 技术协议 MWTS 511-2015-031

材质: AAR-C

轴重: $\leq 3\text{T}$

运行速度: $\leq 30\text{km/h}$

Execution standard: Technical agreement

MWTS 511-2015-031

Material: AAR-C

Axle load: $\leq 3\text{T}$

Operating speed: $\leq 30\text{km/h}$



MTJ450(铁路挖掘机 / 公铁两用)

(For Rail Excavator)



执行标准 : 技术协议 MWTS 511-2015-031

材质 : AAR-C

轴重 $\leq 10t$

运行速度 $\leq 30km/h$

Execution standard: technical agreement MWTS 511-2015-031

Material: AAR-C

Axle load $\leq 10t$

Running speed $\leq 30km/h$

MTJ650



执行标准 : TB/T2817-1997

材质 : CL60

轴重 $\leq 32.5t$

运行速度 $\leq 60km/h$

Execution standard: TB/T2817-1997

Material: CL60

Axle load $\leq 32t$

Running speed $\leq 60km/h$,

MTJ686(铁路牵引机车 / 公铁两用)

(For Railcar Movers /Shunting Locomotive)



执行标准 : AARM-107/M-208

材质 : AAR-C

轴重 $\leq 6t$

运行速度 $\leq 60km/h$

Execution standard: AARM-107/M-208

Material: AAR-C

Axle load $\leq 6t$

Running speed $\leq 60km/h$

MTJ711 走轮 (Travelling Wheel)



执行标准 : 技术协议

材质 : 42CrMo

轴重 $\leq 15t$

运行速度 $\leq 30km/h$

Execution standard: technical agreement

Material: 42CrMo

Axle load $\leq 15t$

Running speed $\leq 30km/h$

MG840H-MTJ



执行标准: 技术协议 MTS60094-2010-01
材质: CL60
轴重: 30T
运行速度: 10km/h

Execution standard: Technical agreement
MTS60094-2010-01

Material: CL60
Axle weight: 30T
Operating speed: 10km/h

MTJ760-1



执行标准: TB/T2817-1997
材质: CL60
轴重: 25T
运行速度: ≤ 80 km/h

Execution standard: TB/T2817-1997
Material: CL60
Axle weight: 25T
Operating speed: ≤ 80 km/h

MTJ600



执行标准: 技术协议
材质: 42CrMo
轴重: 5T
运行速度: ≤ 20 km/h

Execution standard: Technical agreement
Material: 42CrMo
Axle weight: 5T
Operating speed: ≤ 20 km/h

MTJ-ZL-400 走轮 (Travelling Wheel)



执行标准: 技术协议
材质: 42CrMo
轴重: ≤ 8 T
运行速度: 15-30km/h

Execution standard: Technical agreement
Material: 42CrMo
Axle load: ≤ 8 T
Operating speed: 15-30km/h



产品介绍

02

轮箍 Tyre

轮箍广泛应用于铁路内燃机车、电力机车、大功率机车，以及电力机车、工矿机车、蒸汽机车、有轨电车等组合轮。轮箍分为机车轮箍和货车轮箍。

轮箍外径 600-1750mm，代表规格：J307(U)-T, J320(U)-T, T914 等系列。产品广泛应用于内燃机车、电力机车、蒸汽机车。

常见规格：600mm-1376mm



Tyres are widely used in railway internal combustion engine locomotives, electric locomotives, high-power locomotives industrial and mining locomotives, steam locomotives, trams and other combination wheels.

The external diameter of tyre: 600-1750mm. The representative specifications are J307(U)-T, J320(U)-T, T914, and tyres are extensively applied in various kinds of electric locomotives, diesel locomotive and steam locomotive.

Common specifications: 600mm-1376mm

J307(U)-T



执行标准: TB/T1882-2001 TB/T2015-2001
Execution standard: TB/T1882-2001 TB/T2015-2001

材质: LG61
Material: LG61

设计参数: 运行速度 $\leq 200\text{km/h}$ 轴重 $\leq 26\text{t}$
Design parameter: Running speed $\leq 200\text{km/h}$
Axle load $\leq 26\text{t}$



MTJ851



执行标准: BS5892 PART4:1992
Execution standard: BS5892 PART4:1992

材质: B6E
Material: B6E

设计参数: 运行速度 $\leq 100\text{km/h}$ 轴重 $\leq 23\text{t}$
Design parameter: Running speed $\leq 100\text{km/h}$
Axle load $\leq 23\text{t}$





MTJ730-T-MJL



执行标准: UIC810-1
材质: B3
轴重: $\leq 17T$
运行速度: 60-80km/h

Execution standard: UIC810-1
Material: B3
Axle load: $\leq 17T$
Operating speed: 60-80km/h

MTJ968-T-CN



执行标准: UIC810-1
材质: B6T
轴重: $\leq 32.9T$
运行速度: 70-80km/h

Execution standard: UIC810-1
Material: B6T
Axle load: $\leq 32.9T$
Operating speed: 70-80km/h

MTJ663A



执行标准: UIC810-1
材质: B6T
轴重: 17-19T
运行速度: 60-100km/h

Execution standard: UIC810-1
Material: B6T
Axle weight: 17-19T
Operating speed: 60-100km/h

MTJ660 (NL660-MTJ)



执行标准: UIC810-1
材质: B4N
轴重: $\leq 11.5T$
运行速度: $\leq 80km/h$

Execution standard: UIC810-1
Material: B4N
Axle load: $\leq 11.5T$
Operating speed: $\leq 80km/h$

MTJ1007



执行标准: BS 5892 PART4:1992
材质: B6E
轴重: 16-20T
运行速度: 50-70km/h

Execution standard: BS 5892 PART4:1992
Material: B6E
Axle weight: 16-20T
Operating speed: 50-70km/h

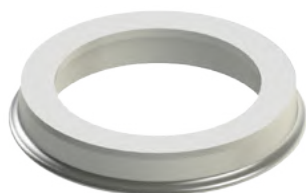
MTJ-LG950-BS



执行标准: BS 5892 PART4:1992
材质: B6E
轴重: 16-20T
运行速度: 50-70km/h

Execution standard: BS 5892 PART4:1992
Material: B6E
Axle weight: 16-20T
Operating speed: 50-70km/h

MTJ-LG838-BS



执行标准: BS 5892 PART4:1992
材质: B6E
轴重: 16-20T
运行速度: 50-70km/h

Execution standard: BS 5892 PART4:1992
Material: B6E
Axle weight: 16-20T
Operating speed: 50-70km/h

MTJ-LG1046-BS



执行标准: BS 5892 PART4:1992
材质: B6E
轴重: 16-20T
运行速度: 50-70km/h

Execution standard: BS 5892 PART4:1992
Material: B6E
Axle weight: 16-20T
Operating speed: 50-70km/h

MTJ-LG1033-BS



执行标准: BS 5892 PART4:1992
材质: B6E
轴重: 16-20T
运行速度: 50-70km/h

Execution standard: BS 5892 PART4:1992
Material: B6E
Axle weight: 16-20T
Operating speed: 50-70km/h

MTJ1255-F-WM



执行标准: 技术协议
材质: LG65A
轴重: 16-25T
运行速度: 70-100km/h

Execution standard: Technical agreement
Material: LG65A
Axle weight: 16-25T
Operating speed: 70-100km/h



产品介绍

03

车轴 Axle



铁路车辆车轴是铁路车辆走行部的关键部件之一，承担铁路车辆自身以及所载货物或乘客的全部重量，均匀地传递给车轮，再通过车轮传递到轨道上。在车辆运行过程中，车轴将牵引电机或其他动力装置产生的驱动力传递给车轮，使车轮转动从而推动车辆前进。同时，车轴也能将制动装置产生的制动力传递到车轮，实现车辆的减速和停车。

车轴与车轮组成的轮对，通过轴承安装在转向架上，能够保持车辆在轨道上的正确位置和姿态，减少车辆运行过程中的横向和垂向振动，保证车辆运行的平稳性和安全性。

轨道交通车辆用车轴产品相关标准：TB/T 1027.1—2015、TB/T 1027.2—2015、EN 13261:2020
车轴分为客车，货车，机车车轴，可根据客户需求，按照来图进行车轴产品定制。

The axle of a railway vehicle is one of the key components of the running gear, which bears the entire weight of the railway vehicle itself, as well as the goods or passengers it carries. This weight is evenly transmitted to the wheels and then transmitted to the track through the wheels. During vehicle operation, the axle transmits the driving force generated by the traction motor or other power devices to the wheels, causing them to rotate and propel the vehicle forward. At the same time, the axle can also transmit the braking force generated by the braking device to the wheels, achieving deceleration and parking of the vehicle.

The wheelset is composed of axles and wheels, installed on the bogie through bearings, can maintain the correct position and posture of the vehicle on the track, reduce lateral and vertical vibrations during vehicle operation, and ensure the smoothness and safety of vehicle operation.

Axles are divided into passenger car axle, freight car axle, and locomotive axles, and can be customized according to customer needs and drawings.

Related standards for axle products for rail transit vehicles: TB/T 1027.1—2015、TB/T 1027.2—2015、EN 13261:2020





产品介绍

04

轮对 Wheelset

铁路车辆轮对主要由一根车轴和两个车轮组成，二者通过过盈配合组装在一起，形成一个整体结构，共同支撑车辆的重量，并使车辆能够在钢轨上平稳运行。铁路车辆轮对是铁路车辆的关键走行部件，对车辆的安全运行和性能发挥着至关重要的作用。

不同类型的铁路车辆轮对具有不同的轮径尺寸，通常客车、货车、机车轮对的轮径分别为 915mm、840mm、1250mm（电力机车）等。

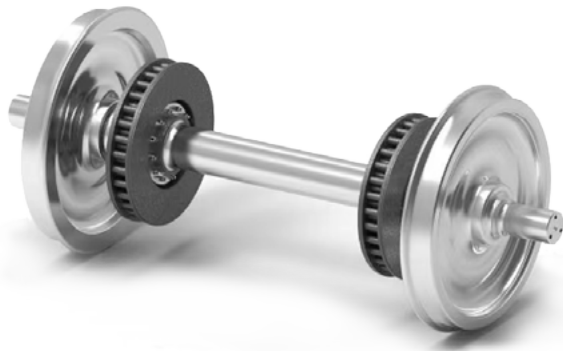
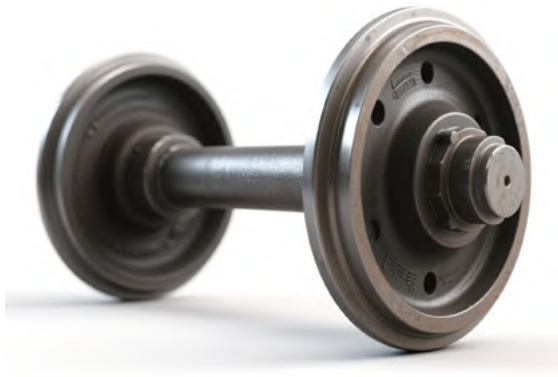
轨道交通车辆用轮对产品相关标准
TB/T 1718—2003、EN 13260:2020



The railway vehicle wheelset is mainly composed of one axle and two wheels, which are assembled together through interference fit to form a whole structure, jointly supporting the weight of the vehicle and enabling the vehicle to run smoothly on the steel rail. The wheelset of railway vehicles is a key running component of railway vehicles, playing a crucial role in the safe operation and performance of the vehicles.

Different types of railway vehicle wheelsets have different wheel diameter sizes, typically 915mm, 840mm, 1250mm (for electric locomotives) for passenger cars, freight cars, and locomotives, etc.

Related standards for wheelsets used in rail transit vehicles: TB/T 1718—2003、EN 13260:2020





铁路车辆转向架是铁路车辆的重要组成部分，它对车辆的运行性能、安全性和舒适性起着关键作用。承担车辆自身及所载货物或乘客的重量，均匀地分布到轨道上，确保车辆能够稳定行驶；引导车辆能够准确地按照轨道的方向运行；通过缓冲减震装置，有效地缓冲车辆在运行过程中各种原因引起的振动和冲击，提高车辆运行的平稳性和舒适性，减少对车辆结构和货物的损坏；传递牵引动力给轮对，使车辆能够获得前进的动力；通过制动装置将制动力传递到轮对，实现车辆的减速和停车。此外传递车辆在运行过程中产生的各种横向力和纵向力，保证车辆的正常运行。

可提供铸钢构架、焊接构架及摆式转向架。也可根据客户需求，按照来图进行定制。

The bogie of railway vehicles is an important component of railway vehicles, which plays a crucial role in the operational performance, safety, and comfort of the vehicles. Bearing the weight of the vehicle itself and the cargo or passengers it carries, evenly distribute it on the track, and ensure that the vehicle can travel stably; Guide vehicles to operate accurately in the direction of the track; By using buffering and shock-absorbing devices, the vibration and impact caused by various reasons during the operation of the vehicle can be effectively buffered, improving the smoothness and comfort of vehicle operation, and reducing damage to the vehicle structure and cargo; Transmit traction power to the wheelset, enabling the vehicle to obtain forward power; Transmit the braking force to the wheelsets through the braking device to achieve deceleration and parking of the vehicle. In addition, various lateral and longitudinal forces generated by the vehicle during operation are transmitted to ensure the normal operation of the vehicle.

We can provide cast steel frames, welded frames, and swing bogies. Customization is also available according to customer needs based on the provided drawings.

1

货车转向架 Freight Car Bogie



主要技术参数 Main technical parameters:

轴重 Axle Weight: 12-23t

自重 Weight: 3-5t

轨距 Track Gauge: 700-1520mm

轴距 Wheelbase: 1600-2400mm

最高运行速度 Maximum Running Speed: 100km/h

2

客车转向架 Passenger Car Bogie



主要技术参数 Main technical parameters:

轴重 Axle Weight: 5-8t

自重 Weight: 4-6t

轨距 Track Gauge: 900-1520mm

轴距 Wheelbase: 1800-2400mm

齿轮箱减速比 Gearbox Reduction Ratio: 4.5-5.185

最高运行速度 Maximum Running Speed: 70km/h

3

机车转向架 Locomotive Bogie



主要技术参数 Main technical parameters:

轴重 Axle Weight: 12-23t

自重 Weight: 8-12t

轨距 Track Gauge: 700-1520mm

轴距 Wheelbase: 1600-2400mm

齿轮箱减速比 Gearbox Reduction Ratio: 1.88-9.85

最高运行速度 Maximum Running Speed: 100km/h



产品介绍

06

铁路货车 Railway Wagon

铁路货车是铁路运输中用于载运货物的车辆，通用铁路货车车辆通常有平车、敞车、篷车、罐车等类型。我公司可根据客户需求，按照来图进行货车产品定制。

Railway freight wagons are vehicles used for transporting goods in railway transportation. General railway freight wagons generally include flat wagons, open wagons, covered wagons, tank wagons, and other types. Our company can customize such products according to customer needs and provided drawings.

1

敞车 Wagon



2

篷车 Cover Wagon



3

平车 Flat Wagon



4

罐车 Tank Wagon





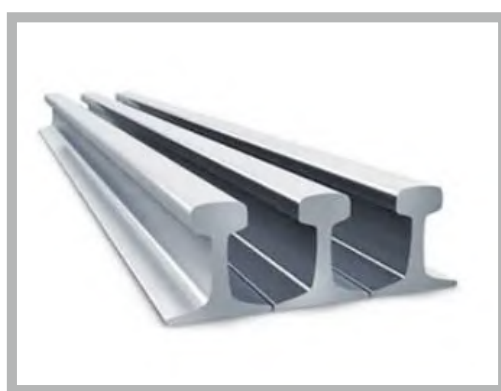
钢轨是铁路轨道的重要组成部分。它们引导火车车轮向前运行，承受车轮施加的巨大压力，并将其传递给枕木。此外，钢轨必须为车轮提供一个连续、平稳且低阻力的滚动表面。在电气化铁路或自动闭塞区段，钢轨还可以作为轨道电路使用。



我公司可根据用户需求提供按世界主流钢轨标准生产的钢轨产品，可供批量供货的轨型达到 40 余种，品种达到 100 余个，硬度级别覆盖 235HB-460HB，强度级别覆盖 780MPa-1450MPa。

Steel rails are an important component of railway tracks. They guide the train wheels forward, withstand the enormous pressure exerted by the wheels, and transmit it to the sleepers. In addition, the steel rail must provide a continuous, smooth, and low resistance rolling surface for the wheels. In electrified railways or automatic block sections, steel rails can also be used as track circuits.

Our company can provide steel rail products produced in accordance with the world's mainstream standards tailored to user needs. There are more than 40 rail types available for bulk supply, with over 100 varieties. Hardness ranges from 235HB to 460HB and the strength ranges from 78MPa to 1450MPa.



品种		规格	钢质	标准
国内钢轨	普通铁路钢轨	37-75kg/m	U71Mn、U75V、 U71MnH、U75VH	铁标、国标
	高速铁路钢轨	60kg/m	U71MnG、U75VG、 U71MnH、U75VH	铁标
	重载铁路钢轨	60kg/m、75kg/m	U78CrV(PG4)、 U95Cr(PG5)	
	吊车轨	QU80-QU120	U71Mn、U75V	
	道岔轨	60AT1、60AT2、50AT1、60TY1	U71Mn、U75V、 U71MnH、U75VH	
	地铁轨	60kg/m、60N	U71Mn、U75V、 U71MnH、U75VH	
	槽型轨	59R2、60R2	U75V	EN、铁标
出口钢轨		欧标系列 (45E1、54E1、60E1、54E1A1.60E1A5、60E1A1)	IS、PG5、PG4、SS、MHT、 LA、HH、AR、900A、R260、 R350HT、R350LHT 等	UIC860、BS11、 JIS、EN、 AREMA、 AS 等标准
		UIC 系列(UIC60、UIC54)		
		美标系列(115RE、136RE)		
		英标系列(BS80、BS90、BS95N、BS100A)		
		其他 (NZR50、TR57、60E1、OT50.50N、AS60、AS68)		



1

轴承产品 Bearing Products

轨道交通车辆用轴承是确保轨道车辆安全、平稳运行的关键部件，主要应用在铁路货车、铁路客车、城市轨道交通车辆轴箱、齿轮箱以及牵引电机等部位，为车轴、齿轮轴电机转子等提供支撑，保证车辆平稳安全的运行。

我们严格选用 SKF、TIMKEN、LYC 等品牌轴承。

Bearings for rail transit vehicles are key components that ensure the safe and smooth operation of rail vehicles. They are mainly used in railway freight cars, railway passenger cars, urban rail transit vehicle axle boxes, gearboxes, and traction motors and provide support for the axle, gear shaft, motor rotor, etc., ensuring the smooth and safe operation of the vehicle.

We strictly select bearings from brands such as SKF, TIMKEN, LYC, etc.



深沟球轴承
Deep Groove Ball Bearings



角接触球轴承
Angular Contact Ball Bearing



调心滚子轴承
Spherical Roller Bearing



推力球轴承
Thrust Ball Bearing



圆柱滚子轴承
Cylindrical Roller Bearings



2

车辆闸瓦 Vehicle Brake Shoes

合成闸瓦是铁路车辆制动系统中的关键部件，是一种由多种材料通过特定工艺合成的用于铁路车辆制动的部件，通过与车轮踏面摩擦产生制动力，使车辆减速或停车。合成闸瓦广泛应用于各种铁路车辆，包括普通旅客列车、高速列车、地铁列车、货



运列车等。此外，合成闸瓦还适用于不同类型的铁路线路，无论是山区铁路、平原铁路还是城市轨道交通线路，都可以根据实际情况选择合适的合成闸瓦产品。

我们可以根据客户需求提供和定制各类规格的合成闸瓦产品。

Composite brake shoes are key components in railway vehicle braking systems. They are a type of component made of multiple materials and synthesized through specific processes for railway vehicle braking. They generate braking force through friction with the wheel tread to slow down or stop the vehicle. Synthetic brake shoes are widely used in various railway vehicles, including ordinary passenger trains, high-speed trains, subway trains, freight trains, etc. In addition, synthetic brake shoes are also suitable for different types of railway lines, whether it is mountainous railways, plain railways, or urban rail transit lines, suitable synthetic brake shoe products can be selected according to the actual situation.

We can provide and customize various specifications of synthetic brake shoe products according to customer needs.



HGM-B 型高摩合成闸瓦

适用于铁路车辆货车制动。

HGM-B type high friction synthetic brake shoe

Suitable for braking railway vehicles and freight cars.



HGM-D 型高摩合成闸瓦

适用于铁道车辆重载货车制动。

HGM-D type high friction synthetic brake shoe

Suitable for braking heavy-duty railway vehicles and wagon.



GM09 型高摩合成闸瓦

适用于 GE 公司提供给哈萨克斯坦的内燃机车制动，获得了俄白哈三国联盟的 CUTR 认证。

GM09 type high friction synthetic brake shoe

Suitable for the internal combustion locomotive braking provided by GE to Kazakhstan, it has obtained CUTR certification from the Russia Belarus Kazakhstan Triple Alliance.



AAR 货车用高摩合成闸瓦

产品性能符合北美铁道协会 AAR M-926 标准要求，主要销往北美地区。

High friction composite brake shoes for AAR trucks

The product performance meets the requirements of the North American Railway Association AAR M-926 standard and is mainly sold in North America.



城市轨道交通车辆用合成闸瓦

适用于运营速度 80km/h 的城市轨道交通车辆制动。

Synthetic brake shoes for urban rail vehicles

Suitable for braking of urban rail transit vehicles operating at a speed of 80km/h.

3

车钩及附件

Car Hook and Accessories



车钩及附件是铁路车辆连接的关键部件，主要作用是实现车辆之间的机械连接，传递牵引力、制动力和冲击力等。主要包括车钩本体和钩舌、钩尾框等附件。

我们可以根据客户需求提供用于客车、货车的各类车钩及附件产品。

轨道交通车辆用车钩产品及附件的相关标准：TB/T 456.2—2019、TB/T 2221、TB/T 1961

The coupler and accessories are key components for connecting railway vehicles, mainly used to achieve mechanical connection between vehicles, transmit traction force, braking force, impact force, etc. They mainly include the coupler body, coupler tongue, coupler tail frame and other accessories.

We can provide various types of couplers and accessories for railway passenger cars and freight cars according to customer needs.

Relevant standards for coupler products and accessories of rail transit vehicles: TB/T 456.2—2019、TB/T 2221、TB/T 1961

车钩 Coupler



钩舌 Coupler Knuckle



钩尾框 Coupler Yoke



车钩从板
Coupler Slave Plate

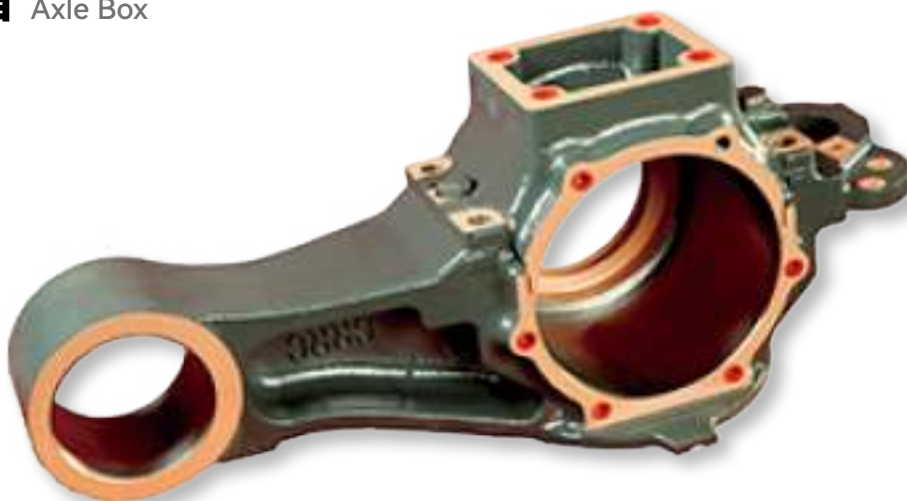


车钩小件
Coupler Small Parts



4

轴箱 Axle Box



轴箱是铁路车辆走行部的重要部件，承受车辆的垂直载荷，并将这些载荷均匀地传递到车轴上，进而传递给钢轨。限制车轴在车辆运行过程中的横向和纵向移动，保证车轴与车轮的正确位置关系，使车辆能够沿着钢轨稳定行驶。轴箱内通常安装有弹性元件，如弹簧、橡胶垫等，能够吸收和缓和车辆在运行过程中产生的振动和冲击，减少对车辆结构和设备的损坏，提高旅客的舒适性。

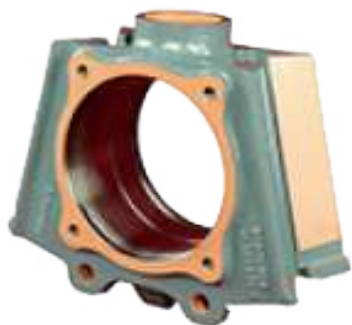
我们可以根据客户需求提供用于客车、货车的各类轴箱产品。

轨道交通车辆用轴箱产品相关标准：TB/T 3017—2021、TB/T 1011—2018、EN 13260:2010

Axle boxes are important components of the running gear of railway vehicles, which bear the vertical load of the vehicle and evenly transfers these loads to the axle, and then to the steel rail, limiting the lateral and longitudinal movement of the axle during vehicle operation, ensure the correct position relationship between the axle and the wheels, and enable the vehicle to travel steadily along the steel rails. Elastic components such as springs and rubber pads are usually installed inside the axle box, which can absorb and mitigate the vibrations and impacts generated by the vehicle during operation, reduce damage to the vehicle structure and equipment, and improve passenger comfort.

We can provide various axle box products for railway passenger cars and freight cars according to customer needs.

Relevant standards for axle box products for rail transit vehicles: TB/T 3017—2021、TB/T 1011—2018、EN 13260:2010



• 材质 Material: EN-GJS-400-18-LT
重量 Weight: 79.84Kg



• 材质 Material: A4
重量 Weight: 85Kg



• 材质 Material: EN-GJS-400-15
重量 Weight: 37.3Kg



• 材质 Material: GE300
重量 Weight: 81.1Kg



• 材质 Material: B 级钢
重量 Weight: 108Kg



• 材质 Material: EN-GJS-350-22
重量 Weight: 48.1Kg



产品介绍

09

铁路扣件

Railway Fasteners

铁路扣件是铁路轨道的重要组成部分，主要用于将钢轨固定在轨枕或道床板上，起到连接、固定和减震等作用。按结构形式分类，应用范围最广泛的为弹条扣件产品，覆盖高速、重载、普速、地铁、城市轻轨、有轨电车、磁悬浮及各制式轨道交通市场。

我们可以根据客户需求提供和定制各类规格的铁路扣件产品。

铁路扣件产品相关标准：TB/T 3395.1—2015、TB/T 3570—2021



Railway fasteners are an important component of railway tracks, mainly used to fix steel rails on sleepers or track bed plates, playing a role in connection, fixation, and shock absorption. Classified by structural form, the most widely used products are spring clip fasteners, covering high-speed, heavy-duty, conventional railway, subway, urban light rail, tram, maglev, and various standard rail transit markets.

We can provide and customize various specifications of railway fastener products according to customer needs.

Relevant standards for railway fastener products: TB/T 3395.1—2015、TB/T 3570—2021

01 高速铁路扣件

01 High speed railway fasteners



WJ-8 扣件
WJ-8 fastener



弹条 V 型扣件
Elastic strip type V fastener

02 重载铁路扣件

02 Heavy duty railway fasteners



弹条VII型扣件
Elastic strip type VII fastener

03 普速铁路扣件

03 General speed railway fasteners



弹条I型扣件
Elastic strip type
I fastener



弹条II型扣件
Elastic bar type
II fastener



弹条III型扣件
Elastic bar type
III fastener



生产设备

Production Equipment



环形加热炉
Annular Heating Furnace



轧制线
Rolling Line



轧机
Rolling Mill



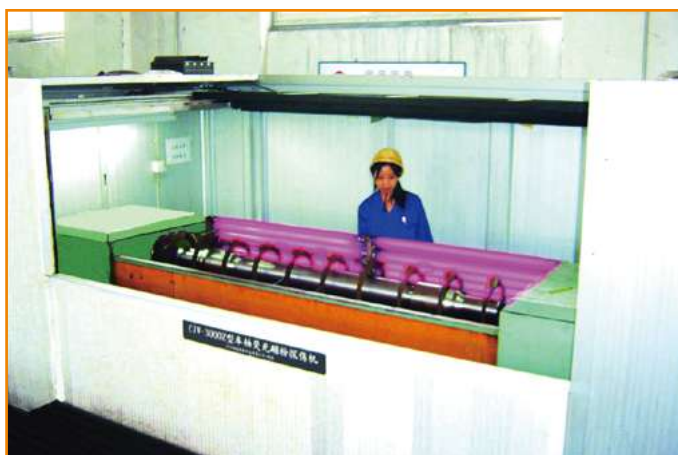
落垛机
Piler



淬火线
Quenching Line



自动加工线
Automatic Processing Line



荧光磁粉探伤机
Magnetic Particle Testing Machine



全自动径向超声波探伤机
Automatic Radial UT Machine



车轴外圆磨床
Grinding Machine For Making Axle



轮对压装机
Wheelset Press Machine



检测设备 Test Equipment



X 射线衍射分析室
X-ray Diffraction Lab



等离子体光谱分析室
Plasma Spectrometer Analysis Lab



夹杂物分析室
Inclusion Analysis Lab



拉伸实验室
Tensile Lab



氢氧氮分析室
Nitron,Oxygen&Hydrogen Analysis Lab



热模拟实验室
Thermal-Mechanical Simulation Lab



扫描电镜室
SEM Lab



仪器化冲击实验室
Instrumented Impact Lab



光谱分析室
Spectrometer Analysis Lab



X 射线荧光光谱分析室
X-ray Fluorescence Spectrometer Analysis Lab



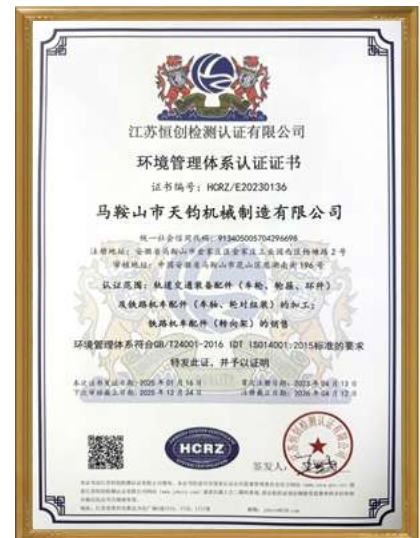
马鞍山市天钧机械制造有限公司
Maanshan Tianjun Machinery Manufacturing Co., Ltd

企业荣誉 Enterprise Honor



认证证书

Authentication Certificate

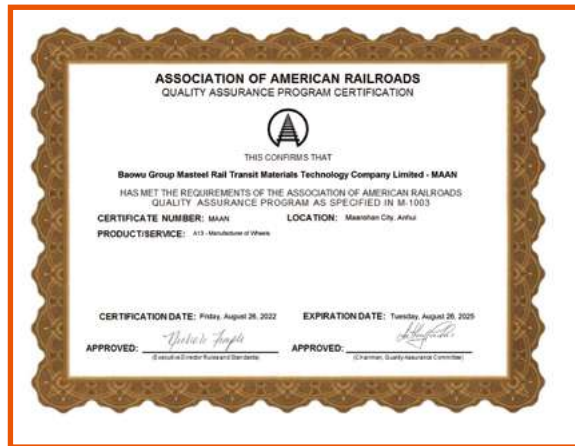




认证证书

Authentication Certificate







STRATEGIC cooperation

战略合作伙伴



业务分布范围

Business Distribution Range

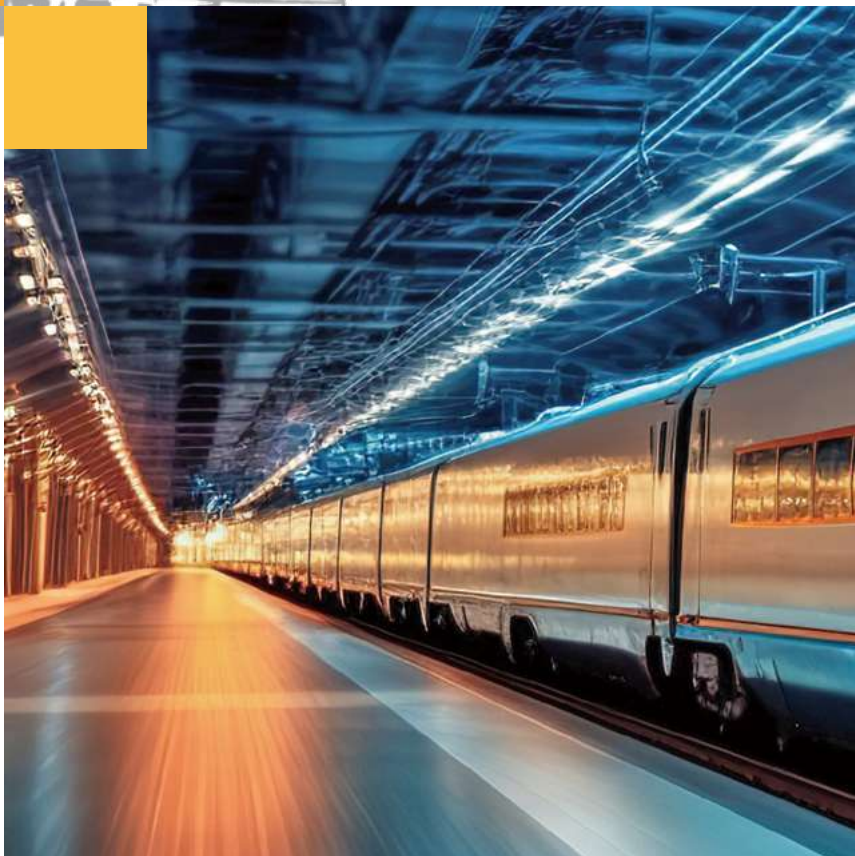


销售及客户网

Sales and Customer Network

出口到亚、欧、美、非、大洋各大洲等
50 多个国家和地区

Exported to more than 50 countries
and regions in Asia, Europe, America,
Africa, Oceania



Add: 安徽省马鞍山市慈湖高新区慈湖南街 196 号

Tel: +86-555-2117156 +86 189 5408 2249

<http://www.tj-wheel.com> <https://www.tjrailwheels.com>

E-mail: inquiry@tj-wheel.com

Add: No. 196, Cihu South Street, Cihu Technical Industrial Zone,
Maanshan City, Anhui Province, P.R. China.